

Corporate Overview

GP-Pro EX HMI  
Software

AGP3000 Hardware  
Specifications

AGP3000 Series  
Operator Interface

Pro-Server EX  
Data Management  
Software

HMI Connectivity  
and Accessories

# Pro-face®



## AGP3000 Series: Advanced Operator Interfaces for the Competitive Edge

[xycom.com](http://xycom.com)

CELEBRATING  
**35** Years  
of Industrial  
Automation  
Solutions

**Pro-face®**  
**XYCOM™**

# The Best in Human Machine Interfaces



**Globally recognized,  
globally supported,  
globally trusted.**



- ||| We are the leading independent global supplier of industrial computing and visualization solutions for automation and manufacturing applications.
- ||| We continue to set the standards for HMI solutions by offering the industry's most extensive product offerings and the highest levels of connectivity and support.

## Pro-face HMI Operator Interfaces

### Programmable graphic HMIs



- 3.8" to 15" crisp, clear HMI displays
- TFT, STN color or mono touch screens
- Data sharing & collection through OPC, DDE, SQL, etc.
- Web-enabled & remote monitoring capabilities
- Large selection of controller connectivity
- Ethernet, USB, RS232, RS422/485 and CompactFlash™ interfaces
- Full-featured HMI screen editor software

### HMI logic controllers



- 5.7" to 12.1" dedicated touch-screen logic controllers
- Supports local or distributed I/O applications
- Low-cost standalone or networked units
- TFT color and mono graphics displays
- Large selection of protocol connectivity
- Data sharing & collection through CompactFlash, OPC, DDE, SQL, etc.

## Xycom HMI Industrial Computers & Monitors

### Industrial computers



- 8.4" up to 15" TFT displays
- Up to 1024 x 768 XGA resolution
- Intel® Pentium III and 4 CPUs
- Up to 2.4 GHz processor speed
- UL, cUL HazLoc approvals
- NEMA 4/4X/12 front panel ratings
- Touch screens and/or keypads
- Extensive I/O connectivity
- 20 years of cutout compatibility

### Flat-panel monitors



- 10" up to 19" TFT displays
- Up to 1280 x 1024 SXGA resolution
- NEMA 4/4X/12 front panel ratings
- UL, cUL HazLoc approvals
- Touch screens and/or keypads
- Adapters for cutout compatibility

***World-class HMI products, service, support and reliability.***

## Advanced operator interfaces for the competitive edge

AGP 3700 Series

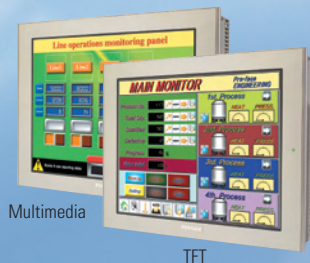
15"



Multimedia TFT

AGP 3600 Series

12.1"

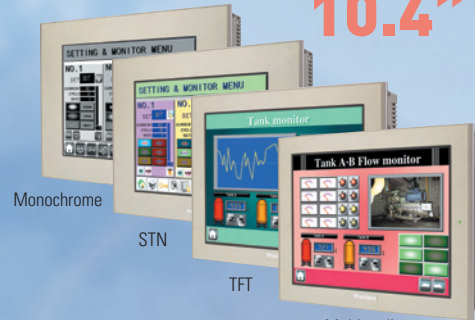


Multimedia

TFT

AGP 3500 Series

10.4"



Monochrome

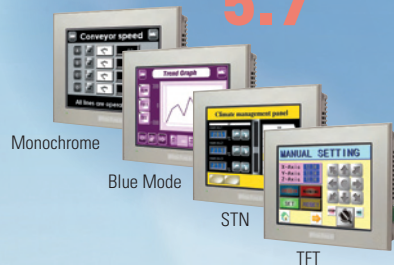
STN

TFT

Multimedia

AGP 3300 Series

5.7"



Monochrome

Blue Mode

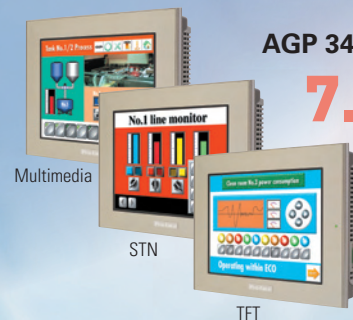
STN

TFT

Screen Editor  
**GP-Pro EX**  
Intuitive HMI development  
environment supporting all  
AGP3000 units

AGP 3400 Series

7.5"



Multimedia

STN

TFT

## An extensive line of HMI operator interfaces with the features you need, designed to lower your costs and improve your manufacturing processes

- ✓ **Lowers your HMI development cost**
  - Easy-to-learn, self-guiding HMI development environment requires less time to master
  - Extensive, built-in, time-saving features help you develop fast, consistent, standardized graphical interfaces
- ✓ **Increases your productivity & product quality**
  - Monitor, collect, analyze and report up-to-the-minute production data using Pro-Server EX data management software
  - AGP3000's extensive connectivity allows you to choose best-in-class complementary products, such as PLCs, drives and controllers, to match your application needs – without worrying about compatibility
- ✓ **Supports a more responsive and efficient work force**
  - Use multimedia features to create detailed audio and visual standardization maintenance guides
  - Gain instant access to machine training videos at each operator workstation
- ✓ **Reduces machine downtime**
  - Use Event Recorder to capture machine faults
  - Link video playback to alarm conditions
  - Play instructional videos to help you quickly isolate and correct the problem
  - Reduce your on-site field support calls by using remote maintenance feature

### All the Best Features in One Product Family

#### HMI operator interface solutions

- Data management solutions
- Multimedia HMI solutions
- HMI Control Solutions
- Built-in security HMI solutions
- Distributed & integrated I/O solutions
- Point-to-point data-sharing HMI solutions

#### Connectivity

- Ethernet
- Audio/video
- USB
- CompactFlash™
- RS-232/422/485
- Multi-protocol

#### Performance

- Crisp, clear, bright displays
- Wide viewing angles
- No-grid, analog touch screen
- 65K color support
- 64-bit RISC CPU
- Fast data sampling



# Get More From Your HMI With Pro-Server EX

Data management software

## Pro-Server EX

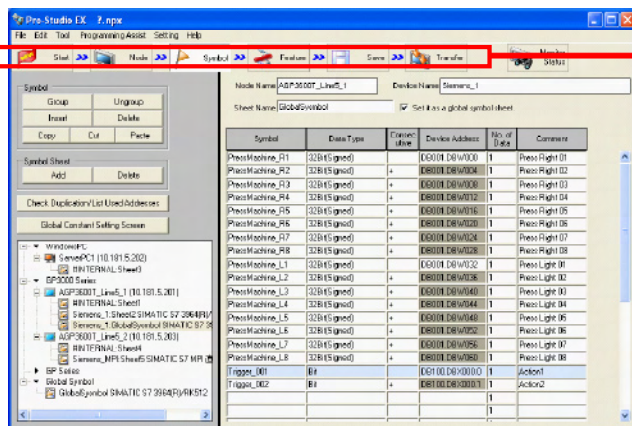
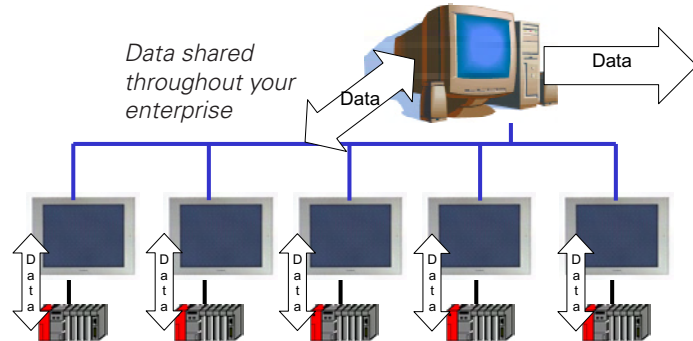
## Data Management

Enhanced connectivity software

**Up-to-the-minute, accurate data to optimize your productivity and maximize profits.**

**Collect, monitor and share factory-floor data:**

- When you need it
- Where you need it
- With those who need it

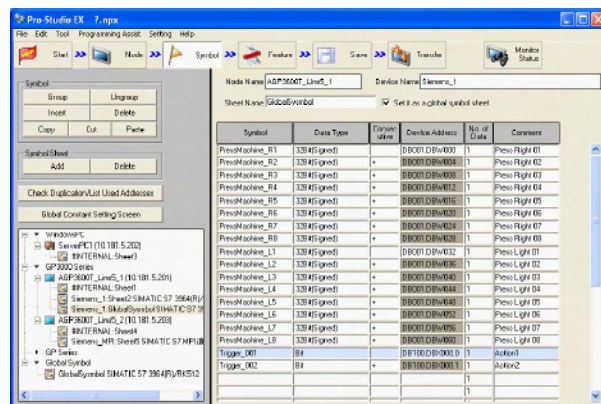


### Fast and simple setup

- Fill-in-the-blank data configuration, no programming!
- Built-in templates save you time and get you started quickly
- Shares data with Windows®-based applications
- Up-to-the-minute production data
- Collect and share data with multiple AGP HMIs and other departments

### Includes 29 easy-to-use Excel® templates

- Daily/monthly/yearly report
- Downtime shift
- Failure rate data
- Preparation time graph
- Direct first-run graph

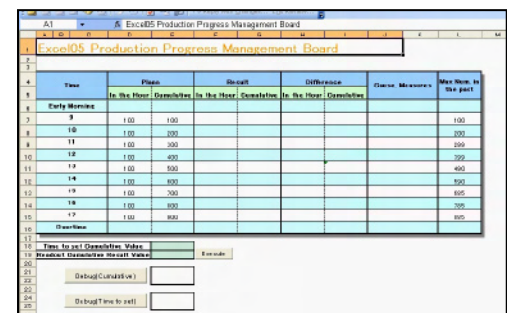


**Create the report you need in minutes!**

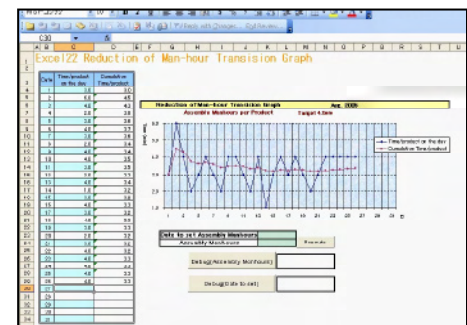
- Select data
  - Choose data operation
  - Update network
- No programming required!**

### Report examples

Production Planning and Product Output Monitoring



Up-to-the-minute Productivity Efficiency Reports



# Factory-Floor Data at Your Fingertips

## Get the competitive edge.

Information where you want it, when you want it.



**Pro-Server EX**

### Architecture Overview

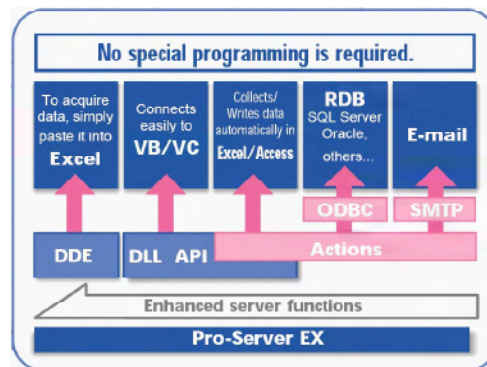
Pro-Server EX is cost-effective data management software that allows data collected by Pro-face operator interfaces to be shared and directly integrated into your existing MRP, MES business system or any Windows-based application. No additional drivers or software needed! Pro-Server EX takes advantage of all the protocol connectivity built into GP-Pro EX, allowing you to share data anywhere.

### Architecture overview

#### Connectivity support

DDE  
API (for VB or VC++)  
SMTP e-mail  
DLL  
ODBC  
Excel  
Access  
SQL Server

*Requires: Windows® 2000  
(Service Pack 3 or later),  
Windows® XP Home Edition/  
Professional or/Server Intel  
Pentium® III 500MHz or more*



#### Applications

- Share HMI data with your PC server
- Share HMI data with another HMI
  - Peer-to-peer data sharing with any Ethernet-based Pro-face HMI
- Write data to and log data from PLC
- Send e-mail to desktop, cell phone, pager, via SMTP
- Collect and write data
  - In Excel, CSV file, to or from database

**Integrate into your existing enterprise system.  
Save your budget, and save thousands of dollars per year!**

# GP-Pro EX

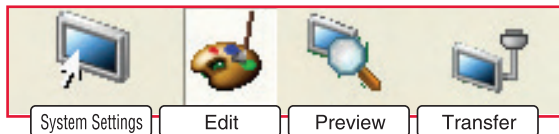
## SELF-GUIDING

Intuitive HMI Screen Development Editor

## With GP-Pro EX's simple four-step navigation process, HMI development has never been easier – or faster

### Four Simple Steps

- III Icons across the top of the editor guide you through the four basic steps of screen editing with GP-Pro EX software!

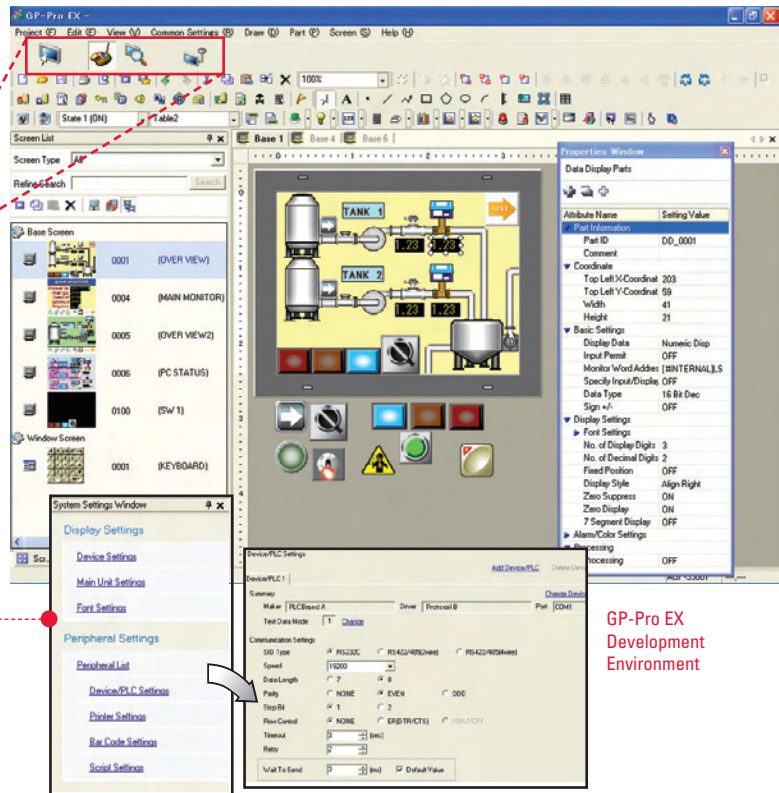


# 1

### ESTABLISH SYSTEM SETTINGS

#### III Intuitive Communication Set-up

- Configure up to four different protocols that operate simultaneously
- One-step bar-code reader setup
- Scripting functions for interfacing to custom or proprietary third-party devices
- Lists recently used devices for fast access to relevant controllers



# 2

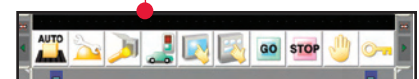
### EDIT SCREENS

- III **Powerful, full-featured HMI editor for fast screen development**  
*Create complex HMI screens and reusable templates in minutes!*

- Huge graphic parts library with high-resolution 2D and 3D part images
- Create standardized header and footer templates
- Multi-functional switches with on/off delay two-touch function
- Use any Windows®-based font for crisp and smooth, easy-to-read text, plus unlimited character sizing
- Double-click on a part to pop up its attribute window for easy editing
- Drag and drop parts between two projects – edit both simultaneously!



More than  
1800 parts  
and symbols



**One-click access** to multiple user-defined headers (i.e. title) and footers (i.e. menu) for perfect placement. Edits to headers/footers update all screens simultaneously!



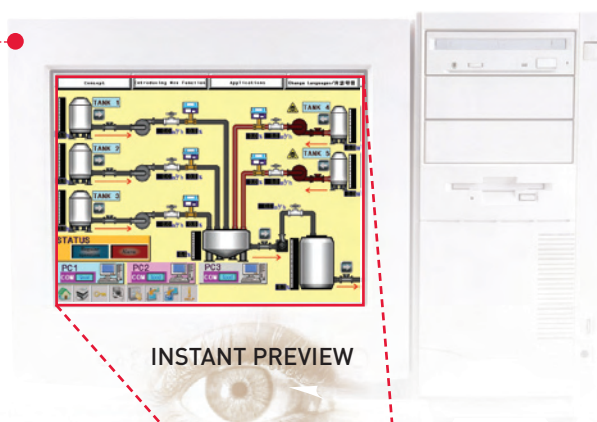
# 3

## PREVIEW YOUR APPLICATION SCREENS

### III Preview your HMI application on your PC and spare yourself from unnecessary downloads.

Review your HMI screens on your PC to fine-tune the look and feel of your application. **Saves valuable time!**

- Allows you to enter data and preview the results, enhancing screen development
- **Built-in documentation** support feature allows you to quickly create an HMI specification based on selected criteria
  - Add screen captures to create clear specifications for engineering documents



INSTANT PREVIEW

# 4

## TRANSFER YOUR APPLICATION...AND GO!

### III Download your applications *in seconds, not minutes!*

Large HMI projects? No problem. The **ultra-fast AGP3000 64-bit RISC processor** provides speedy and efficient application upload and download file transfers.

- **Built-in, powerful error-checking features**
  - GP-Pro EX will automatically check for errors before downloading your project
  - If an error is detected, a new status window opens to quickly indicate the error and where it occurs within your application
- Download your HMI application through the Ethernet or USB ports
- Do field upgrades using the CompactFlash™ port – no software required!



Fast Application Transfer



AGP3000

# GP-Pro EX



**GP-Pro EX. Designed for the beginner, but powerful enough to satisfy even the most experienced HMI developer.**

- Create highly detailed and secure applications
- Speed up development with extensive time-saving features
- Interface to any controller with extensive built-in connectivity

**Start today!**

Download a trial version today at [www.xycom.com](http://www.xycom.com).

# GP-Pro EX – The Features You Depend On

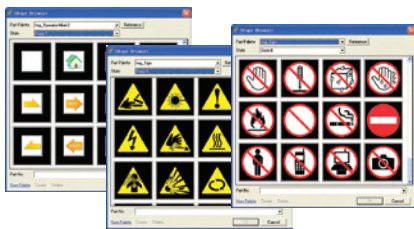


## HMI Screen Editor

Self-guiding software for all  
AGP3000 Series HMI models

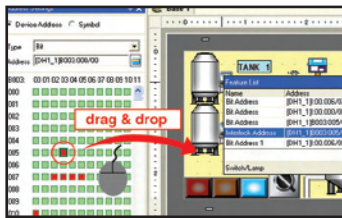
All the tools you need to create  
highly functional, friendly and  
versatile HMI applications

### Setup, graphics and editing



#### Extensive image parts, symbols & fonts library

- Over 1,800 high-quality 3D parts provide international recognition of symbols - overcoming language barriers.
- BMP and JPG files can be freely placed and reduced/enlarged with high clarity.
- Windows®-based image fonts provide a wide range of font characters and crisp, readable text with unlimited sizing capabilities.

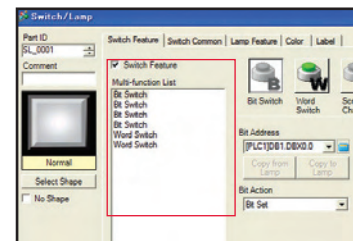


#### Visual PLC address mapping

- Smart visual address mapping for fast PLC-address-to-part communication connections
- Drag and drop PLC address onto part to quickly link controller address to pushbutton, tank, graph, etc.
- Gives a quick visual check on how each part is mapped to controller or I/O device
- Significantly reduces screen development time
- Quick indication of what controller addresses are still available

#### Multi-action switches

- Execute multiple actions with one switch
- No need to stack switches, leading to possible operator error
- Choose Bit Switch, Word Switch, Set Action setting, PLC Address, etc.



#### Easy bar-code reader setup

- As simple as enabling the COM port the reader is connected to
- Data is instantly displayed on the screen or can be logged
- Use for parts tracking or identifying machine operator



#### Part property window

- Property Window for quick review and changes of objects.
- Change part or symbol
- Change part attribute colors
- PLC communication address
- Part function type (e.g. Momentary to Toggle)

#### CompactFlash™ (CF card)

- Download HMI application to CompactFlash
- OEM machine field upgrades - no software needed!
- Log critical data to CF card for later retrieval and analysis
- Store large image files

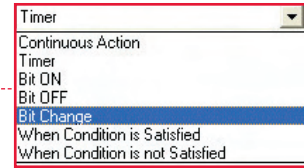
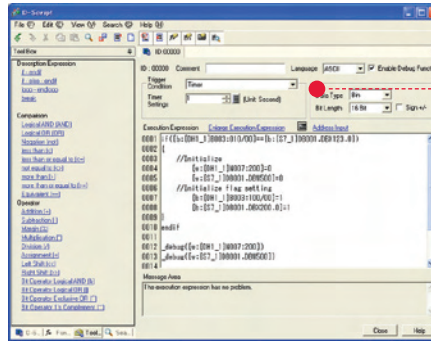




## User-defined macro functionality

### Powerful D-scripting

- III Extend your serial communications capabilities!  
Write your own simple ASCII protocol to communicate to custom controllers, third-party I/O boards, and interface to legacy plant-floor equipment
- III Create data logging algorithms – log to internal memory, CompactFlash, or print directly from AGP's touch screen, etc.
- III Develop custom functions (macros) to execute a sequence of events.

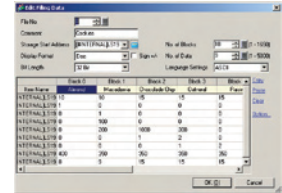


Select from various types of triggers for maximum flexibility of operations.

## Advanced functionality

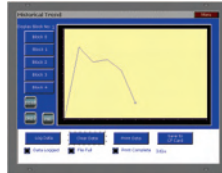
### Recipes

- III Create hundreds of recipes and load them from internal memory or CompactFlash (CF) card
  - View all recipes on one screen or use multiple screens
  - Transfer recipe values to and from PLC
  - Create recipes via CSV files and transfer to AGP3000. Lets you write recipes in Excel® or other documents



### Data logging and historical trending

- III Store data to CompactFlash (CF) or to a PC server for report generation
- III View data from AGP3000 in historical graph format
- III Real-time report generation



### Alarms and events

- III Quick visual of current, event-triggered and historical alarms
- III View list and review detailed alarm descriptions
- III Acknowledge alarms and take action or Reset and Revert back to normal operating mode

### Security pop-up keypads

- III Keep unauthorized users from viewing or modifying critical areas of your HMI application
  - Built-in 16 security level features to view and/or modify screens, system design
  - View data based on access level (e.g. production operator, maintenance personnel, plant-floor supervisor, HMI design engineer, etc.)



Various types of numeric and alpha-numeric keypads are available.

### Time scheduling

- III Standardize equipment start-up times
- III Monitor productivity from each production shift
- III Set up periodic routine maintenance schedules
- III Use time scheduler to limit access to machine operations



### Multi-language

- III Supports up to 16 different languages simultaneously
- III English, French, German, Spanish, Asian languages, etc.
- III Operators can view all screen images in the language of their choice

Text Table		Jump		Language		Table 1		Table 2		Table 3	
No.	of Characters	1	2	3	4	5	6	7	8	9	10
1	10	1	1	1	1	1	1	1	1	1	1
2	10	1	1	1	1	1	1	1	1	1	1
3	10	1	1	1	1	1	1	1	1	1	1
4	10	1	1	1	1	1	1	1	1	1	1
5	10	1	1	1	1	1	1	1	1	1	1
6	10	1	1	1	1	1	1	1	1	1	1
7	10	1	1	1	1	1	1	1	1	1	1
8	10	1	1	1	1	1	1	1	1	1	1
9	10	1	1	1	1	1	1	1	1	1	1

# AGP3000 Multimedia Features

## Multimedia: A new world of possibilities for HMI developers

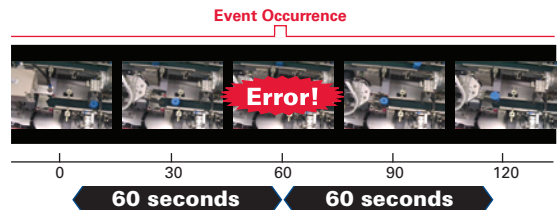
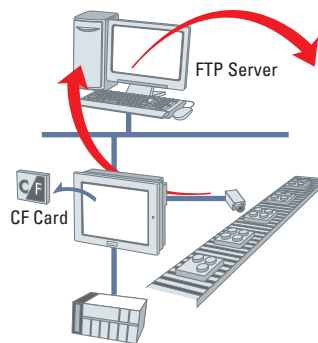
Now you can do what you always wanted to do:

- **Capture the moment**  
Record the events that lead to machine breakdown
- **Create online audio/video machine tutorials.**  
Keeps the operator trained with latest procedures
- **Record and play back audio**  
Leave audio messages or instructions for next shift operator
- **Reduce downtime**
  - Use the movie converter software for instructor-type maintenance procedures
  - Use video cameras for remote monitoring and troubleshooting machines

**Make a good impression –  
Enhance the operator interface experience.**

### Event recorder

III You can record video and audio from a video camera connected to the built-in AGP3x50 multimedia ports. Store files on CompactFlash or place on FTP server connected to the AGP unit via Ethernet.

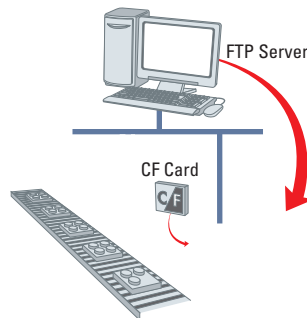


When a predefined event is triggered, video before and after the event (max. 120 sec.) is automatically recorded and stored as a log.

**Fast & accurate troubleshooting**

### Movie file playback

III You can use the display of the AGP3000 to play back movie files. Simply select the desired files from a CompactFlash card or FTP server. You can also loop a series of movies.



It's easy to add movies to on-site instruction screens for better comprehension.



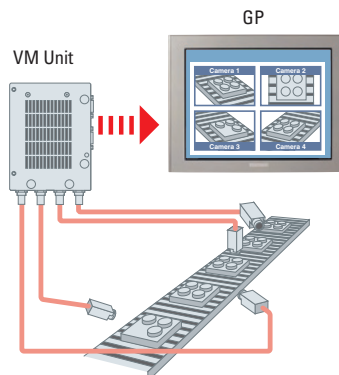
And now, you can create movie files with commercially available video software.

Note: Movie files you create must be converted with the Movie Converter EX converter tool, which requires the purchase of a license.

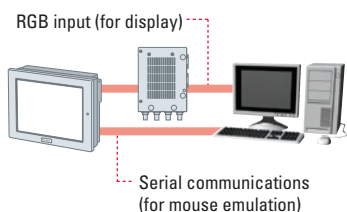
### Video mix unit connection

III With a VM unit (optional), visual monitoring of work details and conditions on the production site is available in real time. Up to four cameras can be connected, with all four images displayed simultaneously on one AGP3000 screen.

Note: Not all models can connect the VM unit.



GP can control a PC by displaying the PC screen on GP by using a VM unit.



Note: Downloading Touch Panel Driver is necessary.

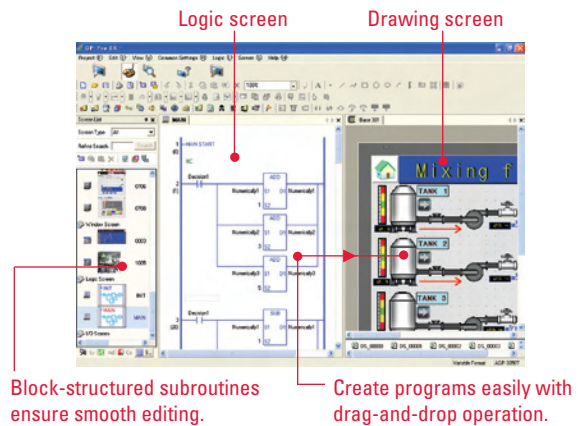
# AGP3000 HMI Control – More Horsepower Under the Hood

## HMI control: Operator interfaces with built-in logic programming

More capabilities and features for demanding HMI applications

### Logic program

- III Develop logic programs and algorithms, as well as your HMI screen application, using the same AGP3000 development environment.
- III Import logic programs created from previous versions of GP-Pro/PBIII C-Package for easy upgrade to AGP3000 products.
- III Symbols for drawing/editing images and variables for creating logic programs are unified.
- III Symbol variables for drawing images and creating logic programs are not required to be imported or exported.
- III Block-structured subroutines reduce steps for development and management of logic programs.



Now, added instructions for greater use of use.

### Logic monitoring function

- III You can use a variety of AGP monitoring screens to check logic programs.
- III English/Japanese display is selectable.



Logic display

Displays an entire logic program so you can check the operating status and the layout of instructions.



Address display

The addresses used in a logic program are listed so you can verify the names and current values of variables.

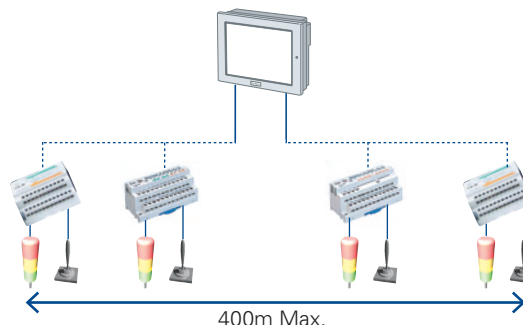
## Build a Complete HMI Control System

Create an entire distributed I/O graphical HMI application using Pro-face AGP3000 HMI, GP-Pro EX HMI development software and any combination of Pro-face Flex Network I/O modules.

Features include: timers, counters, logical operations, mathematical, bit operation, etc. Mix and match any combination of analog and digital I/O modules.

### 63 stations max.

- 256 input points max.
- 256 output points max.
- 64 integer inputs max.
- 64 integer outputs max.



Use one HMI and control development environment to minimize the number of software packages you need to maintain and significantly reduce your support and maintenance costs.



# AGP3000 Series HMI Operator Interface and HMI Control

## AGP3000 Series Lineup

15 inch



12.1 inch



10.4 inch



### AGP-3750T



#### Display

- TFT Color LCD (65K colors)
- Resolution: 1024 x 768
- Analog Resistive Touch Screen (no grid)

#### Ports

- Ethernet: 10Base-T/100Base-TX
- USB: Two USB 1.1 Host Type A
- Video: One NTSC, PAL, SECAM input
- Audio input: Microphone input<sup>1</sup>
- Speaker output: 70mW
- COM Port 1: RS-232/422/485
- COM Port 2: RS-422/485
- CompactFlash card slot Type II
- Expansion bus port for optional communication modules

#### Environmental

- Operating temperature: 0° to 50° C
- Ratings: NEMA 4x/13, IP65f
- Humidity: 10-90% RH non-condensing
- External dimensions:  
W395mm [15.55in] x H294mm [11.57in]  
x D60mm [2.36in]

### AGP-3650T -3600T



#### Display

- TFT Color LCD (65K colors)
- Resolution: 800 x 600
- Analog Resistive Touch Screen (no grid)

#### Ports

- Ethernet: 10Base-T/100Base-TX
- USB: Two USB 1.1 Host Type A
- Video: One NTSC, PAL, SECAM input<sup>1</sup>
- Audio input: Microphone input<sup>1</sup>
- Speaker output: 70mW
- COM Port 1: RS-232/422/485
- COM Port 2: RS-422/485
- Video mix module support
- CompactFlash card slot Type II
- Expansion bus port for optional communication modules
- Flex Network I/O module support<sup>2</sup>
- Built-in 6-input/2-output sink/source<sup>3</sup>

#### Environmental

- Operating temperature: 0° to 50° C
- Ratings: NEMA 4x/13, IP65f
- Humidity: 10-90% RH non-condensing
- Ext. dimensions: W313mm [12.31in]  
x H239mm [9.41in] x D56mm [2.2in]

### AGP-3550T -3500T



#### Display

- TFT Color LCD (65K colors)
- STN Color LCD (4,096 colors)
- Monochrome LCD (16 shades B/W)
- Resolution: 640 x 480
- Analog Resistive Touch Screen (no grid)

#### Ports

- Ethernet: 10Base-T/100Base-TX
- USB: Two USB 1.1 Host Type A
- Video: One NTSC, PAL, SECAM input<sup>1</sup>
- Audio input: Microphone input<sup>1</sup>
- Speaker output: 70mW
- COM Port 1: RS-232/422/485
- COM Port 2: RS-422/485
- Video mix module support\*
- CompactFlash card slot Type II
- Expansion bus port for optional communication modules\*\*
- Flex Network I/O module support<sup>2</sup>
- Built-in 6-input/2-output sink/source<sup>3</sup>

\* AGP3500T, AGP3550T HMI units only

\*\*Expansion bus and video mix unit cannot be used simultaneously.

### -3500S -3500L

#### Environmental

- Operating temperature: 0° to 50° C
- Ratings: NEMA 4x/13, IP65f
- Humidity: 10-90% RH non-condensing
- External dimensions – TFT models:  
W270.5mm [10.65in] x  
H212.5mm [8.37in] x  
D57mm [2.24in]
- External dimensions –  
STN & Mono models:  
W313mm [12.32in] x  
H239mm [9.41in] x  
D56mm [2.2in]

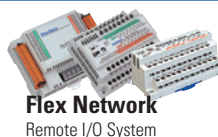
		AGP-3750		AGP-3600/3650		AGP-3500/3550			
Display Type		TFT		TFT		TFT	STN	Mono	
Rated Voltage		AC100-240V	DC24V	AC100-240V	DC24V	AC100-240V	DC24V	AC100-240V	DC24V
Advanced Multimedia		AGP3750-T1-AF	AGP3750-T1-D24	AGP3650-T1-AF		AGP3550-T1-AF			
HMI Control Integrated	DIO Sink			AGP3600-T1-AF-D81K	AGP3600-T1-D24-D81K	AGP3500-T1-AF-D81K	AGP3500-T1-D24-D81K	AGP3500-S1-AF-D81K	AGP3500-S1-D24-D81K
	DIO Source			AGP3600-T1-AF-D81C	AGP3600-T1-D24-D81C	AGP3500-T1-AF-D81C	AGP3500-T1-D24-D81C	AGP3500-S1-AF-D81C	AGP3500-S1-D24-D81C
	Flex Network			AGP3600-T1-AF-FN1M	AGP3600-T1-D24-FN1M	AGP3500-T1-AF-FN1M	AGP3500-T1-D24-FN1M		
Standard HMI				AGP3600-T1-AF	AGP3600-T1-D24	AGP3500-T1-AF	AGP3500-T1-D24	AGP3500-S1-AF	AGP3500-S1-D24

<sup>1</sup>AGP3x50 models only

<sup>2</sup>Discrete I/O AGP3000 "-FN1M" HMI units only

<sup>3</sup>AGP3000 "-D81K" and "-D81C" HMI units only

Pro-face's uniquely advanced approach to connectivity enables the AGP3000 Series to support existing equipment while accommodating future expansion.



**Profibus**  
Profibus Slave Unit  
(CA5-PFSALL/EX-01)

7.5 inch



5.7 inch



AGP-3450T -3400S  
-3400T

DC24V     

#### Display

- TFT Color LCD (65K colors)/STN Color LCD (4,096 colors)  
Monochrome LCD (16 shades B/W)
- Resolution: 640 x 480
- Analog Resistive Touch Screen (no grid)

#### Ports

- Ethernet: 10Base-T/100Base-TX
- USB: One USB 1.1 Host Type A
- Video: One NTSC, PAL, SECAM input (AGP3450T only)
- Audio input: Microphone input (AGP3450T only)
- Speaker output: 70mW
- COM Port 1: RS-232/422/485
- COM Port 2: RS-422/485
- CompactFlash card slot Type II
- Expansion bus port for optional comm. modules
- Flex Network I/O module support<sup>2</sup>
- Built-in 6-input/2-output sink/source<sup>3</sup>

#### Environmental

- Operating temperature: 0° to 50° C
- Ratings: NEMA 4x/13, IP65f
- Humidity: 10-90% RH non-condensing
- External dimensions: W215mm [8.46in] x H170mm [6.69in] x D60mm [2.36in]

AGP-3300T -3301S  
-3300S -3301L  
-3300L -3302B

DC24V     

#### Display

- TFT Color LCD (65K colors)
- STN Color LCD (4,096 colors)
- Monochrome LCD (16 shades B/W)
- Blue/white mode LCD (16 shades)
- Resolution: 320 x 240
- Analog Resistive Touch Screen (no grid)

#### Ports

- Ethernet: 10Base-T/100Base-TX\*
- USB: One USB 1.1 Host Type A
- COM Port 1: RS-232/422/485\*\*
- COM Port 2: RS-422/485
- CompactFlash card slot Type II\*\*\*
- Expansion bus port for optional comm. modules
- Flex Network I/O module support<sup>2</sup>
- Built-in 6-input/2-output sink/source<sup>3</sup>

#### Environmental

- Operating temperature: 0° to 50° C
- Ratings: NEMA 4x/13, IP65f
- Humidity: 10-90% RH non-condensing
- External dimensions: W167.5mm [6.59in] x H135mm [5.31in] x D59.5mm [2.34in]

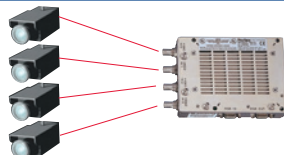
\*Ethernet interface not available on AGP-3301 and AGP-3302 models.

\*\*For model AGP-3302B, COM port 1 is RS232C only.

\*\*\*CF card interface is not available on model AGP-3302B.

		AGP-3400/3450		AGP-3300/01/02					
				00			01		02
Display Type		TFT	STN	TFT	STN	Mono	STN	Mono	Blue
Rated Voltage		DC24V	DC24V	DC24V	DC24V	DC24V	DC24V	DC24V	DC24V
Advanced Multimedia		AGP3450-T1-D24							
HMI Control Integrated	DIO Sink	AGP3400-T1-D24-D81K	AGP3400-S1-D24-D81K	AGP3300-T1-D24-D81K	AGP3300-S1-D24-D81K	AGP3300-L1-D24-D81K			
	DIO Source	AGP3400-T1-D24-D81C	AGP3400-S1-D24-D81C	AGP3300-T1-D24-D81C	AGP3300-S1-D24-D81C	AGP3300-L1-D24-D81C			
	Flex Network	AGP3400-T1-D24-FN1M		AGP3300-T1-D24-FN1M		AGP3300-L1-D24-FN1M			
Standard HMI		AGP3400-T1-D24	AGP3400-S1-D24	AGP3300-T1-D24	AGP3300-S1-D24	AGP3300-L1-D24	AGP3301-S1-D24	AGP3301-L1-D24	AGP3302-B1-D24

Video  
Mix Unit  
I/F

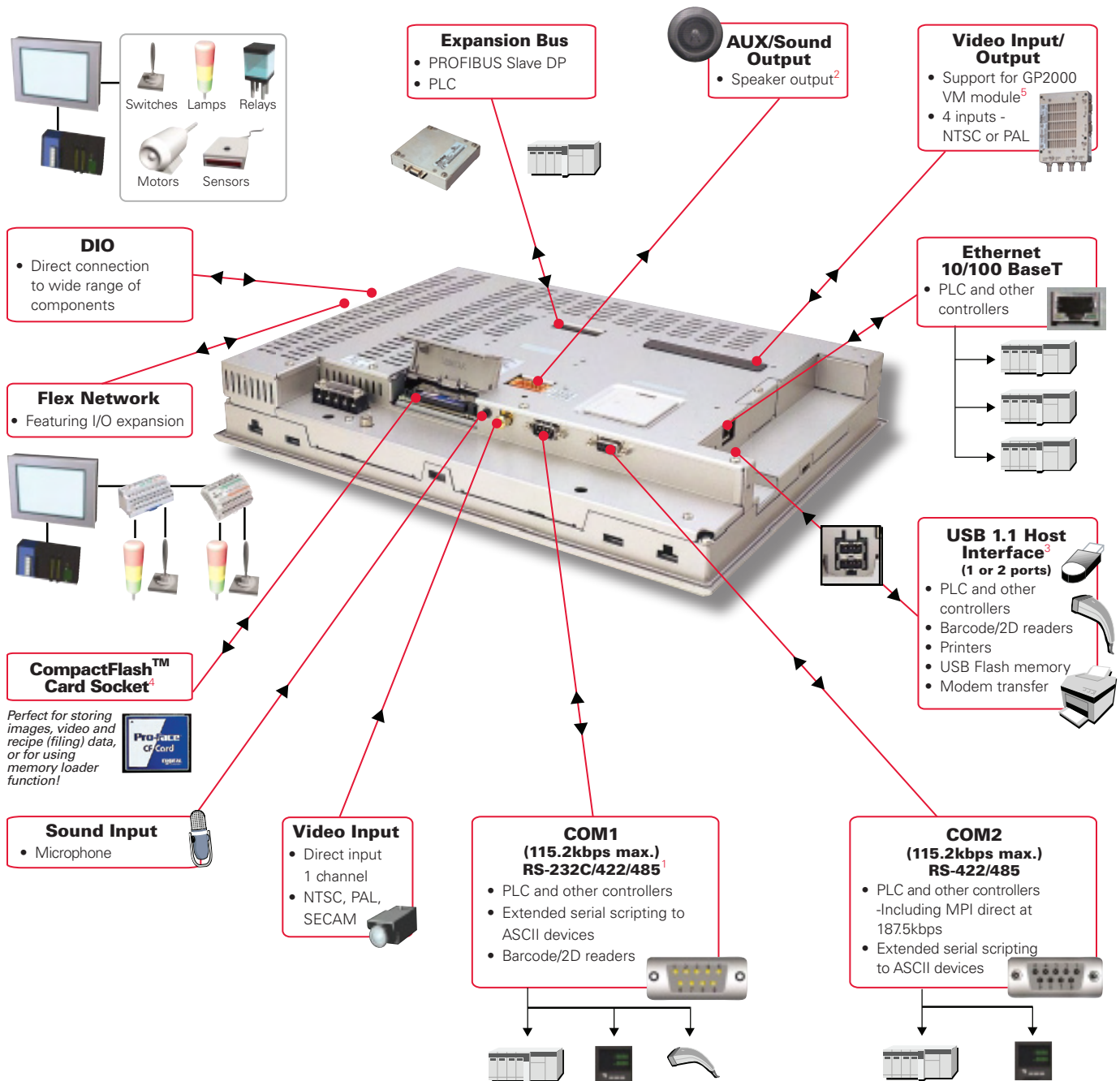


#### Video Mix Unit Interface

with four-camera NTSC/PAL input +RGB in/out  
(GP2000-VM41)

## The only HMI you need.

*The AGP3000's extensive array of connectivity options makes it easy to standardize on one HMI model.*



<sup>1</sup> AGP3302-B type model only has RS-232C asynchronous transmission

<sup>2</sup> AGP34xx, 35xx, 36xx and 37xx models include AUX/sound outputs

Sounds must be converted from .WAV format

<sup>3</sup> Requires CA3-USBCB-01 for transfer of screen data

<sup>4</sup> Not available on 3302B

<sup>5</sup> Compatible with AGP35xxT and 36xxT TFT display models only

- These interfaces represent the entire line of AGP3000 products. See data sheets for individual model specifications.
- USB - See driver list for supported third-party devices
- Up to four PLC protocols simultaneously (AGP33xx supports two).
- Please refer to documentation for allowable configurations.



# Interface to Virtually Anything on the Factory Floor!

Interface/Model	3302B	3300L/S/T	3400S/T	3450T	3500L/S	3500T	3550T	3600T	3650T	3750T
<b>COM1</b> (115.2kbps max.) RS-232C/422/485	Yes (RS232C ONLY) DB9 Socket Type	Yes	Yes	Yes	Yes	Yes	Yes	Yes	Yes	Yes
<b>COM2</b> (115.2kbps max.; 187.5kbps for MPI direct) RS-422/485	Yes	Yes	Yes	Yes	Yes	Yes	Yes	Yes	Yes	Yes
<b>Ethernet</b> 10/100 BaseT	-	Yes	Yes	Yes	Yes	Yes	Yes	Yes	Yes	Yes
<b>USB</b> 1.1 Host Interface	1 port	1 port	1 port	1 port	2 ports	2 ports	2 ports	2 ports	2 ports	2 ports
<b>CompactFlash</b> Card Socket	-	Yes	Yes	Yes	Yes	Yes	Yes	Yes	Yes	Yes
<b>Expansion Bus</b>	Yes	Yes	Yes	Yes	Yes	Yes	Yes	Yes	Yes	Yes
<b>Video</b>	-	-	-	1 Ch Video In	-	-	1 Ch Video In	-	1 Ch Video In	1 Ch Video In
<b>GP2000-VM41</b> Support	-	-	-	Yes	-	Yes	Yes	Yes	Yes	-
<b>Sound</b>	-	-	Yes	Yes <sup>1</sup>	Yes	Yes <sup>1</sup>	Yes <sup>1</sup>	Yes	Yes <sup>1</sup>	Yes <sup>1</sup>
<b>DIO</b>	-	Yes <sup>2</sup>	Yes <sup>2</sup>	-	Yes <sup>2</sup>	Yes <sup>2</sup>	-	Yes <sup>2</sup>	-	-
<b>Flex Network</b>	-	Yes <sup>3</sup>	Yes <sup>3</sup>	-	Yes <sup>3</sup>	Yes <sup>3</sup>	-	Yes <sup>3</sup>	-	-

<sup>1</sup>Sounds must be converted from .WAV format. Note: AGP3x50 models also include one microphone input.

<sup>2</sup>Sink or Source, depending on model; refer to individual data sheets. <sup>3</sup>F/N AC/DC models vary; refer to individual data sheets.

## Drivers

### PLC Drivers

#### Rockwell Automation

DF1  
DH-485  
Ethernet I/P (Native tag support)

#### Siemens AG

SIMATIC S7 3964(R)/RK512  
SIMATIC S7 MPI Direct  
SIMATIC S7 Ethernet

#### GE Fanuc Automation

Series 90 Ethernet (SRTP)  
Series 90-30/70 SNP  
Series 90-30/70 SNP-X

#### Schneider Electric

MODBUS SIO<sup>1</sup> Master  
MODBUS TCP Master  
Uni-Telway  
Modbus Slave (SIO<sup>1</sup> or Ethernet<sup>1</sup>)

#### Sharp Mfg. Corp.

JW Series Computer Link SIO

#### YOKOGAWA Electric Corp.

Personal Computer Link SIO  
Personal Computer Link Ethernet

#### LS Industrial Systems

Master-K Cnet

#### TOYODA Machine Works

TOYOPUC CMP-LINK SIO  
TOYOPUC CMP-LINK Ethernet

#### Fuji Electric Corp.

MICREX-F Series SIO

#### Mitsubishi Electric Corp.

A Series CPU Direct  
A Series Ethernet  
A Series Computer Link  
FX Series CPU Direct  
FX Series Computer Link  
Q Series CPU Direct  
Q/QnA Serial Communication  
Q/QnA Series Ethernet  
QnA Series CPU Direct  
QUTE Series CPU Direct  
Modbus TCP Master

#### YASKAWA Electric Corp.

MEMOBUS SIO  
MEMOBUS Ethernet

#### OMRON Corp.

C/CV Series HOST Link  
CS/CJ Series Ethernet  
CS/CJ Series HOST Link

#### Hitachi Industrial Equipment Systems

HIDIC H Series Ethernet  
HIDIC H Series

#### Matsushita Electric Works

FP Series Computer Link SIO

#### KEYENCE Corp.

KV-700/1000 Series CPU Direct

#### Saia-Burgess Controls

SAIA S-Bus SIO

### Temperature Controllers

#### Yamatake Corp.

Digital Controller SIO

#### RKC Instrument

Temp. Controller MODBUS SIO

#### OMRON Corp.

Temp. Controller CompoWay/F

### Fieldbus Module

#### PROFIBUS International

PROFIBUS DP Slave

### Other Connections

#### Digital Electronics Corp.

Memory Link  
General Ethernet (using D-Script)<sup>1</sup>

<sup>1</sup>Contact your local sales rep for availability.

## Barcode, 2D Readers & Printers

	Manufacturer	Model	Type	Comments
Serial	Aimex Corporation	BR-530RS	Pen	Requires BB-60 power supply
	OPT Electronics	OPT-6125-RS	Touch Scanner (read width: 65mm)	Requires DC5300T for power
	Denso Co.	HC-36IITR	Touch Scanner (read width: 61mm)	Requires P-200 for power, also requires KRS-423-XF1K (from Sanwa Supply) connector cable
	HHP	IT3800LR-12	Linear imager	Requires cable 42203758-03 (IT3800LR-12 Reader has been shown to work but is not fully tested)
USB	Aimex Corporation	BR-530UK	Pen	Power supply not required
	OPT Electronics	OPT-6125-USB	Touch Scanner (read width: 65 mm)	Power supply not required
	Denso Co.	HC-36TU-K	Touch Scanner (read width: 61mm)	Power supply not required
	HHP	IT5800	Hand-held Industrial Scanner	5800SR050-0F00 is complete with USB cable
	Symbol	LS3408-FZ	Hand-held Industrial Scanner	Part #LS3408-FZ20005 needs cable CBA-U01-S07ZA
	Epson	Stylus Photo R200	Inkjet printer	Use USB cable FP-US00 or commercial type
	Epson	ECS/P24-J84(C)	Command printer	Use USB conversion cable IEE1284 (commercially available)
	NEC	PC-PR201-PL	Command printer	Use USB conversion cable IEE1284 (commercially available)

# AGP3000 Connectivity and Installation Accessories



**USB Transfer Cable (1m)**  
**CA3-USBCB-01**  
Downloads project data created with GP-Pro EX from PC's USB port to AGP's USB port.



**USB Cable (5m)**  
**FP-US00**  
Connects a USB printer (Type B) port to AGP's USB port.



**USB Front Cable (1m)**  
**CA5-USBEXT-01**  
USB extension cable.



**RS-232 Cable (5m)**  
**CA3-CBL232/5M-01**  
Connects Mitsubishi PLC A-Series to the AGP RS-232 COM port.



**GP RS-422 Cable (5m)**  
**CA3-CBL422-01**  
Connects the AGP RS-422 COM port 2 via 9-pin plug to host controller via open wires.



**RS-422 Cable (5m)**  
**CA3-CBL422/5M-01**  
Connects the AGP RS-422 COM port 1 via 9-pin socket to host controller via open wires.



**Mitsubishi PLC A-Series Connection Cable (5m)**  
**CA3-CBLA-01**  
Connects Mitsubishi PLC A-Series and QnA-Series programming console port to AGP.



**Mitsubishi PLC Q-Series Cable (5m)**  
**CA3-CBLQ-01**  
Connects Mitsubishi PLC Q-Series programming console port to AGP. Connection cable.



**Mitsubishi PLC Q-Series Cable (5m)**  
**CA3-CBLNMQ-01**  
Connects Mitsubishi PLC Q-Series to the AGP RS-232C COM port. Link cable.



**Mitsubishi PLC FX-Series Cable**  
**CA3-CBLFX/5M-01 (5m)**  
**CA3-CBLFX/1M-01 (1m)**  
Connects Mitsubishi PLC FX-Series programming console port to AGP RS-422 COM port.



**Omron PLC SYSMAC Link Cable (5m)**  
**CA3-CBLSYS-01**  
Connects Omron PLC SYSMAC Series unit to AGP RS-232C port.



**GP Multi-Link Cable (5m)**  
**CA3-CBLMLT-01**  
Connects a host controller to the AGP RS-422 port for multi-link (n:1) communication.



**GP 2 Port Adapter Cable (5m)**  
**CA3-MDCB11**  
Connects Mitsubishi PLC to the AGP RS-422 port using 2-port adapter II (GP070-MD11).



**9-pin-to-25-pin RS-232C Conversion Cable**  
**CA3-CBLCBT232-01**  
9-pin D-sub socket to 25-pin RS-232 cable adapter (for use with some HMI-CAB-Cxxx cables).



**9-pin-to-25-pin RS-422 Conversion Cable**  
**CA3-CBLCBT422-01**  
9-pin D-sub socket to 25-pin RS-422 cable adapter (for use with some HMI-CAB-Cxxx cables).



**Allen-Bradley SLC 5/03, 5/04 Series Cable**  
**HMI-CAB-ST52**  
**HMI-CAB-ST52-30X**  
**HMI-CAB-ST52-50X**  
Connects AGP3000/ST401 to A-B PLC via RS-232 9-pin D-sub.



**Ethernet Crossover Cable**  
**HMI-CAB-ETH**  
6-ft. HMI to PLC Ethernet port or to program HMI.



**Micrologix PLC Cable**  
**HMI-CAB-ST106**  
Connects AGP3000/ST401 to PLC RS-232 8-pin DIN port.



**PLC Adapter Cable**  
**HMI-CAB-ST001**  
Connects to AGP3000/ST40x serial port with 9-conductor open-ended wires for connecting to third-party screw terminal devices.



**RS-232C Cross-Type Cable (5m)**  
**GP410-IS00-0**  
25-pin D-sub connector both ends. Requires CA3-CBLCBT232-01.



**Serial USB Cable for Modem Download**  
**CA6-USB232-01**



**1-Amp Power Supply**  
**510-1000-004**  
**2-Amp Power Supply**  
**510-1000-041**  
24VDC Din-Rail Mount Class 1 Div 2.

**RS-485 Isolation Unit**  
**CA3-ISO485-01**

**RS-232 Isolation Unit**  
**CA3-ISO232-01**

Unit for electrically isolating a serial interface signal from the AGP internal current (RS-422 and RS-485 are switchable, or RS-232C and RS-422 are switchable).

 <p><b>GP-Pro EX Editor Software EX-ED-V11</b> (Includes one user license.) <b>Movie Converter Software EX-MOVCON-LICENSE</b> <b>Additional User License EX-ED-LICENSE</b></p>	 <p><b>Pro-Server EX Data Management Software EX-SDV-V10</b> (Includes one user license.)  <b>Additional User License EX-SED-LICENSE</b></p>	 <p><b>Siemens COM Port Conversion Adapter CA3-ADPSEI-01</b> 9-pin D-sub to MPI adapter. Adapts COM port to accept Profibus MPI-style connectors and cables.</p>	 <p><b>COM Port Conversion Adapter CA3-ADPCOM-01</b> 9-pin D-sub plug to 9-pin D-sub socket adapter for AGP3000 COM port 1. Not intended for AGP3302 model.</p>	 <p><b>Online Adapter CA4-ADPONL-01</b> 9-pin D-sub plug to 9-pin D-sub socket adapter for AGP3000 COM port 2 only. NOTE: Includes network pull- up/pull-down resistors. Not intended for AGP3302 model.</p>
 <p><b>AUX Connector CA5-AUXCNALL-01</b> The AUX connector for AGP3000 series required in case an external output is used.</p>	 <p><b>Terminal Block Conversion CA3-ADPTRM-01</b> 9-pin male D-sub to screw terminal.</p>	 <p><b>Mitsubishi PLC A, QnA, FX Series 2-Port Adapter II GP070-MD11</b> Allows simultaneous use of an AGP3000 Series unit and a Mitsubishi PLC A, QnA, FX series peripheral device.</p>	 <p><b>DC Power Supply Connector for AGP330x and AGP34x0 models CA5-DCCNM-01</b></p>	 <p><b>DC Power Supply Connector for AGP35x0 and AGP36x0 models CA5-DCCNL-01</b></p>
 <p><b>Installation Fastener CA3-ATFALL-01</b> Used to install the AGP3000 Series into a solid panel (included with unit).</p>	 <p><b>USB Cable Clamp (2-port) CA5-USBATL-01</b> USB cable clamp for 2-port HMI units to prevent disconnection.</p>	 <p><b>USB Cable Clamp (1 port) CA5-USBATM-01</b> USB cable clamp for 1-port HMI units to prevent disconnection.</p>	 <p><b>Panel Cutout Adapter for AGP3500 Series CA4-ATM10-01</b> Panel cutout adapter for mounting in cutout of GP2500 (TFT).</p>	 <p><b>Panel Cutout Adapter for AGP3300 Series CA4-ATM5-01</b> Panel cutout adapter for mounting in cutout of GP37W2B.</p>
 <p><b>PROFIBUS Slave Unit CA5-PFSALL/EX-01</b> PROFIBUS slave communication module for connecting AGP to PROFIBUS DP network.</p>	 <p><b>CF Card Adapter GP077-CFAD10</b> Used for read/write of CF card data via a PC's PCMCIA slot.</p>	 <p>CompactFlash card inserts into the unit's CF card slot.</p> <p><b>128MB CA3-CFCALL/128MB-01</b></p> <p><b>256MB CA3-CFCALL/256MB-01</b></p> <p><b>512MB CA3-CFCALL/512MB-01</b></p>	<p><b>AGP3500T/AGP3550T Backlight Replacement CA5-BLU10T-01</b></p> <p><b>AGP3750T Backlight Replacement CA3-BLU15-01</b></p> <p><b>AGP3600T/AGP3650T Backlight Replacement CA3-BLU12-01</b></p> <p><b>AGP3500S/GP2501S Backlight Replacement PS501S-BU00</b></p> <p><i>Note: AGP3300, AGP3400 and AGP3500L backlights cannot be replaced in the field.</i></p>	 <p><b>Protection Sheets</b> Disposable, dirt-resistant cover for screen (5 sheets/set)</p> <p><b>15" for AGP3750 series CA3-DFS15-01</b></p> <p><b>12" for AGP3600 series CA3-DFS12-01</b></p> <p><b>10" for AGP3500 series CA5-DFS10-01</b></p> <p><b>8" for AGP3400 series PS400-DF00</b></p> <p><b>6" for AGP3300 series CA3-DFS6-01</b></p>



# I/O Expansion Options

## Expand the reach of your HMI operator interface

Need some extra I/O? Now there's no need to buy an extra controller when you just need a few more I/O points. The AGP3000 Series of HMI operator interfaces includes models that feature built-in discrete I/O. Or, expand to a distributed I/O network by choosing a model with the optional flex network interface. The choice is yours. Either way, you'll save money with these cost-effective options.

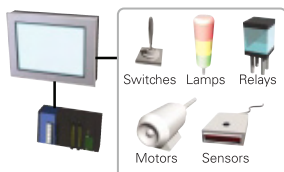
### HMI Control With Integrated I/O

#### AGP3000 "DK81C/DK81K" Units

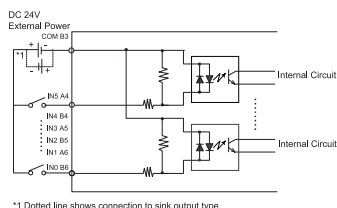
Built-in discrete I/O for when you need a few extra I/O points.

##### DIO type for direct connection to components

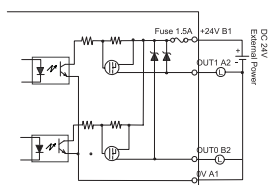
- III DIO (sink) type: 6 inputs/2 outputs
- III DIO (source) type: 6 inputs/2 outputs



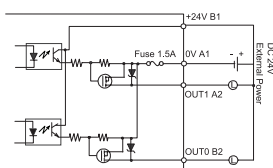
A wide range of components can be used for ON/OFF control.



\*1 Dotted line shows connection to sink output type.



Source Outputs "DK81C"



Sink Outputs "DK81K"

#### Built-in 6 discrete inputs, 2 outputs

### HMI Control for Distributed I/O

#### AGP3000 "FN1M" Units

Flex network interface for distributed I/O applications.

##### Flex network type featuring I/O expansion

- III Maximum number of expandable I/Os:
  - 512-bit I/Os (256 inputs and 256 outputs)
  - 128 integral I/Os (64 inputs and 64 outputs)



## Mix and match any flex network I/O modules to fit your application needs

### Discrete I/O modules

FN-X16TS41	16-pt discrete input
FN-X32TS41	32-pt discrete input
FN-Y08RL41	8-relay discrete output
FN-Y16SK41	16-pt discrete sink output
FN-Y16SC41	16-pt discrete source output



FN-X16TS41



FN-X32TS41



FN-Y08RL41



FN-Y16SK41



FN-Y16SC41

### Discrete high-density I/O modules

FN-XY08TS41	8-pt discrete input, 8-pt sink output
FN-XY16SK41	16-pt discrete input, 16-pt sink output
FN-XY16SC41	16-pt discrete input, 16-pt source output
FN-XY32SKS41	32-pt discrete input, 32-pt sink output



FN-XY08TS41



FN-XY16SK41



FN-XY16SC41



FN-XY32SKS41

### Analog I/O modules

FN-AD02AH41	Input 2-Ch: 0-10VDC 0-20ma, 4-20ma
FN-AD04AH11	Input 4-Ch: 0-10VDC, +/-10VDC, 0-20ma, 4-20ma
FN-DA02AH41	Output 2-Ch: 0-10VDC 0-20ma, 4-20ma
FN-DA04AH11	Output 4-Ch: 0-10VDC, +/-10VDC, 0-20ma, 4-20ma



FN-AD02AH41



FN-DA02AH41

**With the AGP3000 family, you can create a complete HMI monitoring and control system in the same software development environment!**

# Our Commitment to You



A global company  
with a local presence

## Reliable operations worldwide

Pro-face products are known worldwide for their reliability, and they are just as reliable in your facility as they are everywhere else in the world. Our extensive certifications and global support network provide you complete peace of mind. Whether you're looking for HMI products for your own facility or for facilities around the world, Pro-face is there to serve you.



Restriction of Hazardous  
Substances (RoHS) is a directive  
of the European Union (EU).

**ISO 9001:2000**  
Quality System Certified

**ISO 14000**  
Quality System Certified

## Committed to bringing you the best HMI products

No other HMI company will offer you more options, higher reliability or better investment protection than Pro-face. Pro-face strives to continually provide you with HMI products that have features you won't find anywhere else, like ultra-fast 64-bit RISC processors for unmatched HMI performance, the ultimate in multimedia and connectivity capabilities, plus integrated data management solutions and other features proven to boost your productivity and reduce your costs.

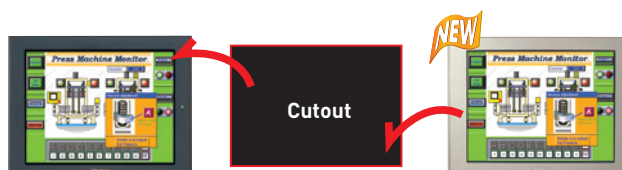
## Protecting your investment



If you're already a Pro-face customer, then you realize the investment protection we've built into our operator interfaces. No other operator interface company can offer you:

- 16 years of cutout compatibility
- Built-in HMI application software migration tools
- Continuous software and hardware enhancements
- Local field application engineers ready to assist you
- A two-year warranty
- In-stock, next-day shipments

### Drag out the old...drop in the new



Older GP2000,  
GP77R, GP70,  
GP\*50, GP\*30, and  
GP\*10 Series

AGP3000 Series

#### Panel cutout dimensions

Size (mm) Series name	191.5x141.5	156x123.5	204.5x159.5	259x201	301.5x227.5	383.5x282.5
GP77R Series	GP-37W2B	GP377R Series	—	GP-477RE	GP577R Series	—
GP2000 Series	—	GP230* Series	GP240* Series	—	GP260* GP250* Series	—
GP3000 Series	GP-3300 Series		GP-3400 Series	GP-3500 Series(TFT)	GP-3600 GP-3600(STN) Series	GP-3700 Series

Note: In some instances, an available adapter plate may be required.

The best HMI protection  
money can buy.



Xycom Automation LLC  
750 North Maple Road  
Saline, MI 48176 USA  
Tel: 734-429-4971 or  
Toll Free: 800-AT-XYCOM  
Fax: 734-429-1010  
<http://www.xycom.com>  
Email: [sales@xycom.com](mailto:sales@xycom.com)

Customer Care Center:  
Tel: 734-944-0482  
Web Support: <http://support.xycom.com>  
Email: [customercare@xycom.com](mailto:customercare@xycom.com)



## WORLDWIDE SUPPORT

### Global Head Office

Digital Electronics Corporation  
Osaka JAPAN  
Tel: +81 (0)6 6613 3116  
Fax: +81 (0)6 6613 5888  
<http://www.pro-face.com>  
[info@pro-face.com](mailto:info@pro-face.com)

### China

Pro-face China International Trading  
(Shanghai) Co., Ltd.  
Shanghai P. R. CHINA  
Tel: +86 (0)21 6361 5175  
Fax: +86 (0)21 6361 5176  
<http://www.proface.com.cn>  
[proface@proface.com.cn](mailto:proface@proface.com.cn)

### South-East Asia Pacific

Pro-face South-East Asia Pacific  
Co., Ltd.  
Bangkok THAILAND  
Tel: +66 (0)2 260 8282  
Fax: +66 (0)2 260 8283  
<http://www.proface.co.th>  
[support@proface.co.th](mailto:support@proface.co.th)

### South Korea

Pro-face Korea Co., Ltd.  
Seoul SOUTH KOREA  
Tel: +82 (0)2 2630 9850  
Fax: +82 (0)2 2630 9860  
<http://www.proface.co.kr>  
[proface@proface.co.kr](mailto:proface@proface.co.kr)

### Taiwan

Pro-face Taiwan Co., Ltd.  
Taipei TAIWAN  
Tel: +886 (0)2 2657 1121  
Fax: +886 (0)2 2657 1021  
<http://www.proface.com.tw>  
[proface@proface.com.tw](mailto:proface@proface.com.tw)

### Australia and New Zealand

Pro-face Australia Pty Ltd.  
Melbourne AUSTRALIA  
Tel: +61 (0)3 9550 7395  
Fax: +61 (0)3 9550 7390  
<http://www.pro-face.com.au>  
<http://www.pro-face.co.nz>  
[pfau@pro-face.com](mailto:pfau@pro-face.com)

### North/South American Head Office

Pro-face America / Xycom  
Saline, MI U.S.A.  
Tel: +1 734 429 4971  
Fax: +1 734 429 1010  
<http://www.profaceamerica.com>  
[sales.info@profaceamerica.com](mailto:sales.info@profaceamerica.com)

### European Head Office

Pro-face Europe B.V.  
Hoofddorp THE NETHERLANDS  
Tel: +31 (0)23 55 44 099  
Fax: +31 (0)23 55 44 090  
<http://www.proface.com>  
[info@proface.com](mailto:info@proface.com)

### France

Pro-face France S.A.S.  
Mitry-Mory FRANCE  
Tel: +33 (0)1 60 21 22 91  
Fax: +33 (0)1 60 21 22 92  
<http://www.proface.fr>  
[info@proface.fr](mailto:info@proface.fr)

### Germany

Pro-face Deutschland GmbH  
Solingen GERMANY  
Tel: +49 (0)212 258 260  
Fax: +49 (0)212 258 2640  
<http://www.pro-face.de>  
[sales@pro-face.de](mailto:sales@pro-face.de)

### Italy

Pro-face Italia S.p.a.  
Bovisio Masciago (Milano) ITALY  
Tel: +39 0362 59 96 1  
Fax: +39 0362 59 96 69  
<http://www.proface.it>  
[info@proface.it](mailto:info@proface.it)

### Poland

Pro-face Europe B.V.  
(Warsaw Office)  
Warsaw POLAND  
Tel/Fax: +48 22 850 9154  
<http://www.proface.pl>

### Scandinavia

Pro-face Scandinavia ApS  
Glostrup (Copenhagen) DENMARK  
Tel: +45 70 22 01 22  
Fax: +45 70 22 01 33  
<http://www.pro-face-eu.net>  
[info@pro-face.dk](mailto:info@pro-face.dk)

### Spain and Portugal

Pro-face España  
Cardedeu (Barcelona) SPAIN  
Tel: +34 (0)93 846 07 45  
Fax: +34 (0)93 845 48 68  
<http://www.pro-face.es>  
[central@pro-face.es](mailto:central@pro-face.es)

### Sweden

Pro-face Sweden AB  
Loddekoping (Malmo) SWEDEN  
Tel: +46 46 540 90 70  
Fax: +46 46 71 27 90  
<http://www.pro-face-eu.net>  
[info@pro-face.se](mailto:info@pro-face.se)

### Switzerland

Pro-face Deutschland GmbH  
Regensdorf SWITZERLAND  
Tel: +41 (0)43 343 7272  
Fax: +41 (0)43 343 7279  
<http://www.pro-face.ch>  
[info@pro-face.ch](mailto:info@pro-face.ch)

### United Kingdom

Pro-face UK Ltd  
Coventry ENGLAND  
Tel: +44 (0)2476 440088  
Fax: +44 (0)2476 440099  
<http://www.profaceuk.com>  
[info@profaceuk.com](mailto:info@profaceuk.com)

**Pro-face®**  
**XYCOM™**

BR-GP3-001(B)

2006 Xycom Automation LLC. All rights reserved. All trademarks are the property of their respective owners.  
Data subject to change without notice. Consult Xycom Automation data sheets for current product information.



## Factory Software New Version News

### HMI Screen Editing

### Logic Control Programming

Screen Editor and  
Logic Program Development  
Software

**GP-PRO/PBIII**  
-C- Package02



PLC



I/O Terminals



## New Version News

### Data Collection



Data Collection Software

**Pro-Server**  
with Pro-Studio Ver.4.1



### Remote Maintenance

Pro-Server Add-on Software

**GP-Viewer**  
Ver.1.1



### Remote Monitoring

Web Operation Software

**GP-Web**  
Ver.1.6



## For a Variety of Manufacturing Needs

- HMI Screen Editing
- Logic Control Programming
- Data Collection
- Remote Maintenance
- Remote Monitoring

Putting the future of Factory Automation at your fingertips.

[www.pro-face.com](http://www.pro-face.com)

# Factory Software

New Version News

**Pro-face**



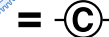
ISO 9001  
JQA-1367

# Newly Updated Applications Make It Easy to Build Advanced-Level Systems

Screen Creation



Logic Program Development



Package02

Screen Editor and Logic Program Development Software

## GP-PRO/PBIII - © Package02

Windows® XP compatible

Enjoy the benefits of having screen creation and logic program development in a single, integrated package. Create easy-to-use HMI systems by simply dragging and dropping pre-made Parts.

### 1 Faster, easier editing

The Parts Palette and Editor Screen now appear in the same screen, so you can place parts quickly and easily by simply dragging them from the palette and dropping them on the screen. Positioning the cursor over a tag icon also brings up an explanation of that tag's operation, to help you create and edit screens.



**Parts Palette**  
Choose the parts from this list, and place them where you want them with simple drag and drop operation.

### 2 Check programs on-site with the GLC Ladder Monitor

When devices do not operate as expected and you need to check your programming, the GLC Ladder Monitor in GP-PRO/PBIII C-Package02 lets you do it right on the GLC screen.

- Monitor device variables.
- No need to stop PLC communications or control.
- Select either decimal or hexadecimal display.
- Scroll the ladder monitor screen for easy viewing.



GLC2400T, GLC2600T Only

### Other Upgrade Features

#### Display previous trend graphs

Display the previous data for up to 65,000 past events.

#### Change connected equipment

Devices can be easily altered when changing PLCs, and the address strings for D-scripts can be changed at the same time.

#### Integer fonts

Select font sizes using integers (1 to 8) for text strings, part label, tags and load marks.

#### Display alarm history dates

Display your alarm acknowledge and recovery dates.

#### Enhanced settings for keypad input displays

Make settings for K-tags (except for the calculation function) and use pop-up keypad interlock.

#### Enhanced numeric display features

Numerical display style is now the same as N-tag display style.

### 3 Easily edit and transfer CSV data with your GP

File and log CSV data directly to a CF Card – Edit it using a PC or the GP.



- Change recipe data with the GP touch panel.
- Transfer recipe data in batches.

### 4 Connect a variety of devices with special scripts for extended SIO communication

GP/GLC extended SIO communication has been further enhanced with the addition of special scripts. Extra functions also help you create commands, making it easier to write communication programs.



#### No More Device Limitations

The extended SIO scripts are designed exclusively for LS devices. You can write a variety of programs into a single script.

- Automatic project back-up
- Enhanced functions for message displays
- SRAM back-up function
- Global cross references for direct screen opening
- Transfers block number and item name for filing data
- Loop operation and end bit added for JPEG captures
- Function added to disable offline passwords
- Index text string sorting
- Function to disable window parts screen display
- Improved video display setting area



Data Collection Software

## Pro-Server with Pro-Studio Ver.4.1

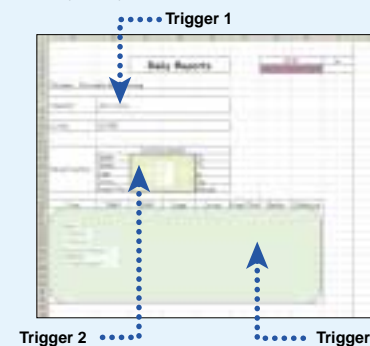
Windows® XP compatible

Collect data from PLCs and other production-line devices quickly and easily on a host PC, then use the data immediately in familiar applications like Microsoft® Excel and Word.

### New "Create Report Action" collects a variety of data in a single sheet

Daily reports have typically required a complicated format programmed in VBA or a similar type of software. Now they can be created with no programming at all. "Create Report Action" makes it extremely easy to create even complex reports.

- In addition to device values, you can collect logging, trend, and other data, and paste text strings and JPEG images onto the forms you create.
- Switch and print GP data and sheet/book data at preset time intervals.
- Update your data right on an open Excel screen.



### Other Upgrade Features

- Write to and read from Oracle® databases (Oracle ODBC driver supported).
- Data distribution reliability is now increased with the addition of a "distribution completed" bit.
- Windows® XP and Office® XP support.
- Data distributed to Pro-Server can be output in CSV format.



Pro-Server Add-on Software

## GP-Viewer ver.1.1

Easily view present and past production data screens.

### Upgrade Features

- M-tags are supported, so you can take full advantage of existing screen data.
- The new trend graph display function lets you upload trend data and display it as an Excel graph.
- The alarm display function executes a preset alarm application in accordance with your Q-tag setting.

\* Pro-Server with Pro-Studio Ver. 4.1 or higher required.



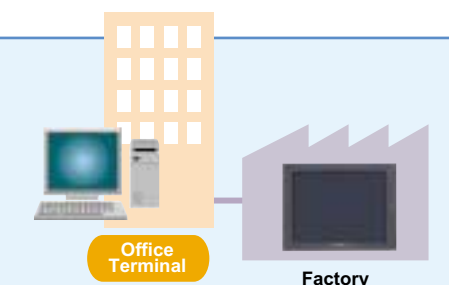
Web Operation Software

## GP-Web ver.1.6

Check your factory data via the Internet. Simplify maintenance and support.

### Upgrade Features

- M-tags are supported, so you can take full advantage of existing screen data.
- The new trend graph display function lets you upload trend data from GP/GLC and display it as an Excel graph.
- The alarm display function performs a preset alarm application in accordance with your Q-tag setting.





## Software Environment Specifications

### GP-PRO/PBIII C-Package02

Product No.	PC	OS	Screen Resolution	Hard Disk Space	Memory	Drive Type	Network Protocol
GPPRO-CNT01W-P02	Windows® compatible PC with Intel Pentium® II 266MHz or faster.	Windows® 95/98/2000/Me/XP Windows NT® (4.0 or later) (Windows NT® 4.0: Service Pack 3 or later)	SVGA (800 x 600 pixels) or higher	Minimum: 75MB Recommended: 145MB	Minimum: 32MB Recommended: 64MB	CD-ROM drive	TCP/IP (Set from the control panel)

### Pro-Server with Pro-Studio Ver. 4.1

Product No.	PC	OS	Screen Resolution	Hard Disk Space	Memory	Drive Type	Network Protocol
PSW-ED01-V41	Windows® compatible PC with Intel Pentium® 133MHz or faster (Recommended: Pentium® II 200MHz) • Cannot be used with PC-9800 Series	Windows® 95/98/2000/Me/XP Windows NT® (4.0 or later) (Windows NT® 95: OSR2 or later) (Windows NT® 4.0: Service Pack 3 or later)	VGA (640 x 480 pixels) or higher	Minimum: 20MB Recommended: 30MB	Minimum: 32MB Recommended: 128MB	CD-ROM drive	TCP/IP (Set from the control panel)

You must have Pro-Server Ver. 4.1 to use GP-Viewer Ver. 1.1.

### GP-Viewer Ver.1.1

Product No.	PC	OS	Screen Resolution	Related Programs (FEP, etc.)	Hard Disk Space	Memory	Network Protocol
PSW-GV01-V11	Windows compatible PC with Pentium® 133MHz or faster. (Recommended: Pentium® II 200MHz)	Windows® 95/98/2000/Me/XP Windows NT® (4.0 or later) (Windows NT® 4.0: Service Pack 3 or later)	VGA (640 x 480 pixels) or higher	Microsoft Internet Explorer Ver.5.0 or later	Minimum: 20MB Recommended: 30MB	Minimum: 32MB Recommended: 128MB	TCP/IP (Set from the control panel)

### GP-Web Ver.1.6

Product No.	PC	OS	Screen Resolution	Related Programs (FEP, etc.)	Hard Disk Space	Memory
GW-CJ01-V16	Server (Runtime Environment)	Windows NT® 4.0 Server SP4.0 or later Windows® 2000 Server/Professional, Windows® XP	SVGA or higher	Pro-Server with Pro-Studio for Windows Ver.3.0 or later/IIIS Ver.4.0 or later (Windows NT® 4.0 Server, Windows® 2000 Server/Professional) Microsoft Internet Explorer Ver.5.0 or later	Minimum: 50MB	Minimum: 128MB
	Server (Development Environment)	Windows NT® 4.0 Server/Workstation SP4.0 or later Windows® 2000 Server/Professional, Windows® XP	SVGA or higher	GP-PRO/PBIII for Windows Ver.5.0 or later/Pro-Server with Pro-Studio for Windows Ver.4.0 or later (When file modifications such as network project files are required. Possible to acquire GP information without Pro-Server if network project files exist.)		
	Client	Windows® 95 OSR2 or later/Windows® 98/Windows® Me/ Windows NT® 4.0 Server/Workstation SP4.0 or later Windows® 2000 Server/Professional, Windows® XP	SVGA or higher	Microsoft Internet Explorer Ver.5.0 or later Microsoft Excel 97 or later		

A wide range of operator interfaces that combine seamlessly in your factory system, making all your factory and device data truly "visible".

Colorful, easy-to-read graphics, easy-to-use touch panel and high-speed data transfer. Graphic Operator Interfaces for a new era.

## GP2000 SERIES



Ethernet connectivity with serial devices – without programming!

## Factory Gateway



Data, display, operation...plus control functions. High-performance controllers for versatile control systems.

## GLC2000 SERIES



**Caution:** Before operating any of these products, please be sure to read all related manuals thoroughly.

- For printing purposes, the colors in this catalog may differ from those of the actual unit.
- Actual user screens may differ from the screens shown here.
- LCD screens may exhibit minute grid-points (light and dark) on the Display Panel surface. Also, "Contouring" - where some parts of the screen are brighter than others, producing a wavelike pattern - may occasionally occur. Both are normal for an LCD display and are not defects.
- Microsoft Windows® 2000, Windows NT®, Windows® XP, Windows® 95, Windows® 98, Windows® Me are registered trademarks of Microsoft Corporation.
- Microsoft® Excel, Word, Access are registered trademarks of Microsoft Corporation.
- All product names used in this catalog are the registered trademarks of their respective companies.
- All information contained in this catalog is subject to change without notice.

ACCESS!! **www.pro-face.com**

**Worldwide Contacts:**

General Info: [info@pro-face.com](mailto:info@pro-face.com)

Technical Info: [support@digital.co.jp](mailto:support@digital.co.jp)

© Copyright 2002 Digital Electronics Corporation. All Rights Reserved.

**Global Head Office**  
Digital Electronics Corporation  
8-2-52 Nanko-higashi  
Suminoe-ku, Osaka 559-0031  
JAPAN  
Tel: +81-(0)6-6613-3116  
Fax: +81-(0)6-6613-5888  
<http://www.pro-face.com>  
[info@pro-face.com](mailto:info@pro-face.com)

**China**  
Wuxi Pro-face Electronics Co., Ltd.  
Shanghai Office  
Room 2001, Singluar Mansion  
No.322, Xian Xia Road  
Shanghai 200336  
P. R. CHINA  
Tel: +86-(0)21-6208-6367  
Fax: +86-(0)21-6208-4816  
<http://www.proface.com.cn>  
[proface@proface.com.cn](mailto:proface@proface.com.cn)

**South Korea**  
Pro-face Korea Co., Ltd.  
7F, JAE YOUNG Building  
678-10 Deung chon-Dong  
Kangseo-ku, Seoul 157-030  
SOUTH KOREA  
Tel: +82-(0)2-658-6835  
Fax: +82-(0)2-3664-6839  
<http://www.proface.co.kr>  
[proface@proface.co.kr](mailto:proface@proface.co.kr)

**Taiwan**  
Pro-face Taiwan Co., Ltd.  
2F, No. 69 Fushing North Road  
Taipei 105  
TAIWAN R.O.C.  
Tel: +886-(0)2-2772-5208  
Fax: +886-(0)2-8773-7892  
<http://www.proface.com.tw>  
[proface@proface.com.tw](mailto:proface@proface.com.tw)

**Asia Pacific Regional Office**  
Digital Electronics Corporation  
Bangkok Representative Office  
23/3 Soi Soonvijai, Rama 9 Road  
Bangkapi, Huaykwang, Bangkok 10320  
THAILAND  
Tel: +66-(0)2-641-4558  
Fax: +66-(0)2-641-4560

**North/South American Head Office**  
Pro-face America, Inc. / Xycom  
750 North Maple Road  
Saline, MI 48176-1292  
U.S.A.  
Tel: +1-734-429-4971  
Fax: +1-734-429-1010  
<http://www.profaceamerica.com>  
[sales.info@profaceamerica.com](mailto:sales.info@profaceamerica.com)

**European Head Office**  
Pro-face Europe B.V.  
Amsteldijk 166  
1079 LH Amsterdam  
THE NETHERLANDS  
Tel: +31 (0)20 6464 134  
Fax: +31 (0)20 6464 358  
<http://www.proface.com>  
[info@proface.com](mailto:info@proface.com)

**France**  
Pro-face France S.A.S.  
Le Vinci 7  
1, rue Henri Becquerel  
77290 Mitry-Mory  
FRANCE  
Tel: +33 (0)1 60 21 22 91  
Fax: +33 (0)1 60 21 22 92  
<http://www.proface.fr>  
[info@proface.fr](mailto:info@proface.fr)

**Germany**  
Pro-face Deutschland GmbH  
Albertus-Magnus-Straße 11  
42719 Solingen  
GERMANY  
Tel: +49 (0)212 258 260  
Fax: +49 (0)212 258 2640  
<http://www.pro-face.de>  
[sales@pro-face.de](mailto:sales@pro-face.de)

**Italy**  
Pro-face Italia S.p.A.  
Via Carcano 44  
20033 Desio (MI)  
ITALY  
Tel: +39 0362 33 71 63  
Fax: +39 0362 30 77 25  
<http://www.proface.com>  
[info.italia@proface.com](mailto:info.italia@proface.com)

**Scandinavia**  
Pro-face Scandinavia ApS  
Copenhagen Europe Center  
Vesterbrogade 149  
1620 Copenhagen V  
DENMARK  
Tel: +45-33 27 06 16  
Fax: +45-33 27 05 06  
<http://www.proface.com>  
[scandinavia@proface.com](mailto:scandinavia@proface.com)

**United Kingdom**  
Pro-face UK Ltd  
The Venture Centre  
The Science Park  
Coventry CV4 7EZ  
ENGLAND  
Tel: +44 (0)2476 692363  
Fax: +44 (0)2476 692365  
<http://www.profaceuk.com>  
[info@profaceuk.com](mailto:info@profaceuk.com)