

3112T-PDWS Pro-Designer™ Workstations

DS-380030(B)



The 3112T-PDWS Pro-Designer Workstations (PDWS) offer an HMI (human machine interface) on a Light-Duty Industrial Open Computer platform. These units come pre-installed with Pro-Designer HMI Runtime software. The Pro-Designer Development Software (sold separately) lets you design simple or complex HMI applications to run on a variety of platforms. These workstations are able to communicate to various PLCs and other controllers by simply downloading one's application. The 3112T-PDWS open platform operator interfaces allow operators to display manuals, view Adobe® Acrobat PDFs, connect to plant networks or optionally serve screens to a remote PC using a browser.

FEATURES

- 12.1" TFT SVGA (800x600) flat panel color display
- Analog resistive touchscreen
- Preloaded with Pro-face Pro-Designer HMI Runtime software
- Intel® Socket 370 Celeron® 1.2 GHz CPU, 256 KB cache, 100 MHz system bus
- 256 MB SDRAM
- AGP graphics controller with BIOS-selectable video RAM up to 64 MB (uses DRAM)
- VGA port for remote monitor
- Supports using remote monitor and built-in display simultaneously
- Preloaded with Windows® 2000 operating system
- 20 GB internal hard drive
- Side accessible 1.44 MB floppy drive and CD-ROM drive
- Type I CompactFlash™ card slot
- Two RS-232 ports
- One configurable RS-232/422/485 port
- Two SPP/EPP/ECP parallel ports
- 10/100Base-T Ethernet
- Audio input/output/mic
- PS/2 keyboard/mouse port (Y-cable included)
- Mounted with mounting clips or standard 75/100 mm VESA arm
- Power cable and drivers included
- 100-240 V AC power supply
- NEMA 4/4X/12, IP65 front panel
- 1-year warranty

Higher Performance

The 1.2 GHz Intel Celeron CPU drives the fastest and most demanding data collection HMI applications.

Pre-loaded Operating Systems

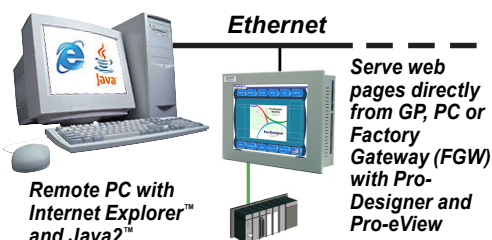
All 3112T-PDWS systems come standard with Windows 2000 pre-loaded.

Sharp, Easy-to-Read Displays

A bright 12" TFT screens can display complex operations with clarity.

Pro-eView Web-Enabled (Optional)

- Serve screens as web pages directly from Pro-Designer workstation.
- View your process anywhere you have internet connectivity.
- Individually select which HMI screens are published to the Internet.
- Various monitoring options available:
 - "monitor only" mode enabled or allow for remote screen variable changes.

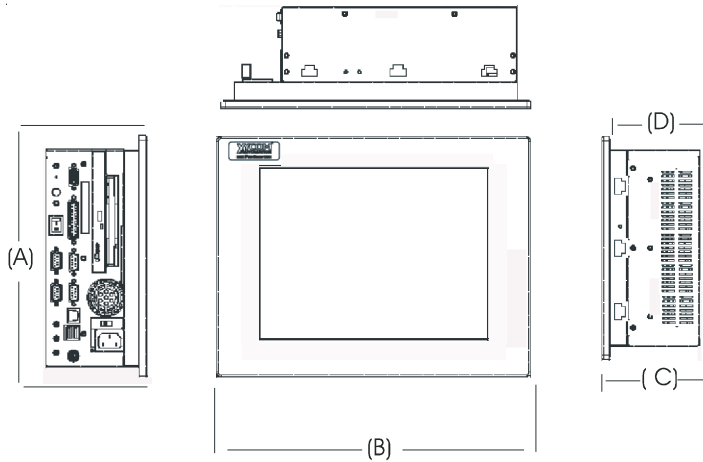


Pro-face®
XYCOM™

PRODUCT CONFIGURATION

Model	3112T-PDWS
Display	12" LCD color display, 800 x 600 (SVGA)
Operator Input	Analog resistive touchscreen
Processors	Intel® Celeron
Preloaded OS	Windows® 2000

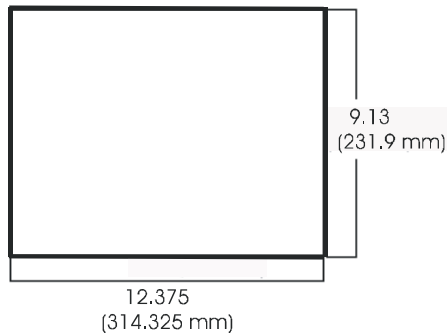
PRODUCT AND MOUNTING DIMENSIONS



3112T-PDWS Unit Dimensions

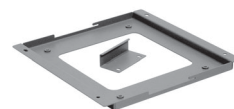
Height (A)	10.24" (260.0 mm)
Width (B)	13.39" (340.0 mm)
Depth (C)	4.25" (107.95 mm)
Mounting Depth (D)	3.90" (99.0 mm)
Weight	21 lbs (9.5 kg)

3112T-PDWS Mounting

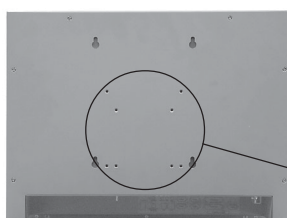


Mounting Options

The 3112T-PDWS are designed to be mounted directly into an equipment panel without requiring special mounting plates or brackets. It can also be mounted on a wall with the wall-mount adapter included in the mounting kit or it can be mounted on a standard 75/100 mm VESA swing or pendent arm. Both units are not NEMA rated if mounted outside of a panel.



Wall Mount Bracket



Wall Mount Pattern (x4)

75/100 mm VESA Arm

Panel Mounting Clips



PRODUCT SPECIFICATIONS AND RATINGS

All of the specifications are subject to change without notice.

Environmental

	Operating	Nonoperating
Thermal	0°C to 50°C (32° TO 122°F)	-20°C to 60°C (-4° to 140°F)
Humidity	20% to 80% RH, noncondensing	20% to 80% RH, noncondensing
Altitude	Sea level to 10,000 ft. (3,000 m)	Sea level to 40,000 ft. (12,000 m)

Electrical

3112T-PDWS

AC Power	100-240V AC 3.0 A (maximum) 88 W nominal ^a , 50/60 Hz
----------	--

^a Nominal Power is measured for a base configuration only. Any additional expansion and/or devices will increase the input power required.

Regulatory Compliance

- CE
- EN 55022, Class A
- EN 6100-6-2
- IEC 60950-1
- EN 61000-3-2, Class A
- EN 61000-3-3

- FCC (47 CFR, Part 15, Class A)

Safety Agency Approvals

- UL (UL 508) Listed
- cUL (CSA-C22.2, #142) Listed



Front Panel

- NEMA 4/4X/12

ORDERING INFORMATION

Choose an order number below:

Order Number	Description
3112T-PDWS	3112T Industrial PC with a Celeron 1.2 GHz CPU, 256 MB DRAM, 20 GB hard drive, 1.44 MB floppy drive, CD-ROM, Windows 2000 operating system, and pre-loaded with Pro-Designer Runtime software.
PS-DWE01-V42	Pro-Designer HMI Development software Version 4.2

Warranty Information

The 3112T-PDWS models carry a one-year parts & labor warranty.

Xycom Automation
750 North Maple Road
Saline, MI 48176

Phone: 734-429-4971
Fax: 734-429-1010
<http://www.xycom.com>

Customer Support Hotline:
734-944-0482



© 2005-2006 Xycom Automation. Specifications may change without notice.
Xycom Automation is a trademark of Xycom Automation. Other brand or product names are the property of their respective owners.