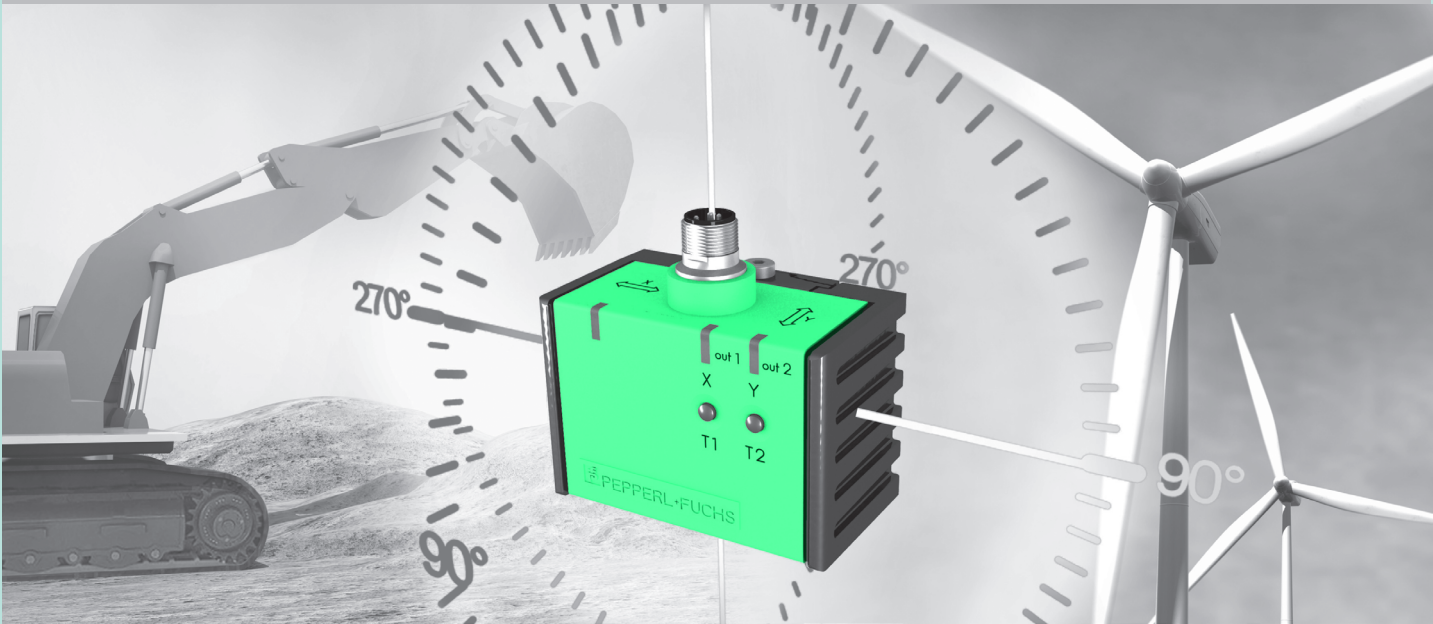




Contents

Inclination Sensors





6. Inclination Sensors

Introduction 856

Data Section

6 Inclination and Acceleration Sensors 857

Introduction

Do you want to monitor the inclination angle of your machine components or the acceleration values of sensitive system components?

Pepperl+Fuchs' F99 Series of inclination and acceleration sensors offers the ideal solution. Our precise and adjustable systems for inclination and acceleration monitoring are ideal for mobile equipment, renewable energy, and factory automation applications. They provide simple solutions for protecting your investment over the long term.

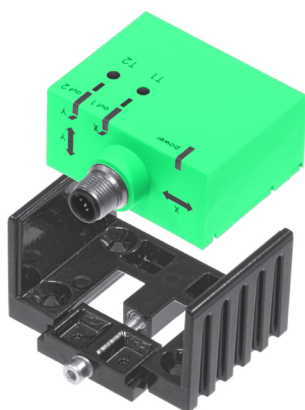
Highlights

- Customer-specific adjustment of measuring ranges
- Intelligent mounting with impact protection
- High IP68 and IP69K degree of protection
- Robust housing suitable for outdoor use
- Extended temperature range -40 °C ... +85 °C
- Highly resistant to mechanical shock 100 g
- Increased immunity 100 V/m
- e1 approval for use on public roads
- CSA approval for worldwide use
- Wear-free and without actuator

Benefits

Mounting

- The F99 Series incorporates a robust metal mounting bracket for flexible mounting
- Integrated hex socket screw enables the sensor module to be easily replaced and used without having to remove the mounting bracket
- A captive locking wedge in the bracket ensures optimum distribution of forces in the event of machine vibrations



Simple mounting with a central screw

Adjustability

- All F99 Series products can be adjusted by the customer
- Customized solutions can be provided with output filtering and custom right-angle ranges

Housing

- Particularly suitable for applications under extreme conditions and for outdoor applications
- Water resistance and extreme shock resistance ensure a long service life

Typical areas of application

F99 inclination sensor

- **Commercial vehicle sector**
for leveling cranes, liftgates, container-loading equipment, etc.
- **Construction machinery**
for monitoring the inclined position of excavators
- **Transport and loading units**
for automatic horizontal alignment of inclined positions
- **Solar power systems**
for optimum solar tracking
- **Automobile production plants**
for monitoring rotation during assembly
- **Rail and marine vessels**
for ensuring equal loading
- **Metal processing**
for monitoring the movement sequences of stamping and pressing machines

F99 acceleration sensor

- Wind power plants or large machinery for shutting down when defined vibration values are exceeded
- Elevators to control acceleration
- Large plants for status monitoring
- Machines for measuring vibrations
- Robots and picker arms to control acceleration

What does your plant need?

Inclination...

Static value that is suitable for movement sequences that are not subject to extreme changes. The static value for the inclination is used for long-term monitoring of the machine to determine if readjustment is required.

... based on the example of a lifting platform

Continuous monitoring and leveling of the vehicle, working platform, or overall system.

Acceleration...

Dynamic value that needs to be monitored in order to quickly identify short-term dynamic influences on the machine.

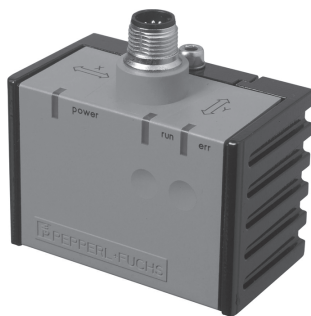
... based on the example of a lifting platform

To prevent a dangerous situation when the lifting platform is extended

and may be affected by a sudden gust of wind.

This will permit early detection by the control system and readjustment

before a permissible inclination angle is exceeded.



CANopen

Model Number

Properties

- 1 and 2 axes measurement
- 30° and 360° measurement range versions
- CANopen and J1939 protocol versions
- Connector version

Type	Inclination sensor, 1-axis	Inclination sensor, 2-axis	INX360D-F99-B16-V15	INY360D-F99-B16-V15	INY030D-F99-B16-V15	INX360D-F99-B20-V15	INY360D-F99-B20-V15
Measurement range	0 ... 360 °	-15 ... 15 °	●	●	●	●	●
Absolute accuracy	± 0.5 °	± 0.2 °	●	●	●	●	●
Resolution	≤ 0.1 °	≤ 0.01 °	●	●	●	●	●
Operating voltage U _B	10 ... 30 V DC	10 ... 60 V DC	●	●	●	●	●
Interface type	CANopen, profile CiA410, Ver. 1.2	J1939 protocol	●	●	●	●	●
Transfer rate	125 ... 1000 kBit/s, programmable	10 ... 1000 kBit/s, programmable	●	●	●	●	●
Node ID	1 ... 127, programmable	0 ... 253, programmable	●	●	●	●	●

Approvals and Certificates

e1 Type approval	2006/28/EG	●	●	●	●	●
CSA approval	cCSAus Listed, General Purpose, Class 2 Power Source	●	●	●	●	●
CCC approval	CCC approval / marking not required for sensors rated ≤36 V					

Dimensions

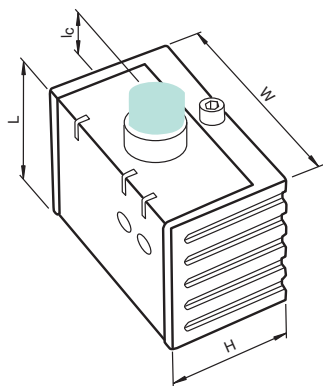
Length L [mm]	44
Width W [mm]	65
Height H [mm]	37
Connector length l _c [mm]	18.5

Accessories

These and more accessories can be found in chapter 10

See pages from 970 ... for cordsets See pages 1066 ... for mounting accessories

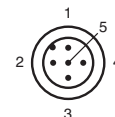
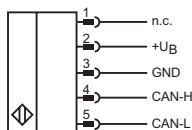
V15-G-2M-PUR-CAN-V15-G	DeviceNet/CANOpen bus cable, M12 to M12, PUR cable 5-pin, straight
V15-G-5M-PUR-CAN-V15-G	DeviceNet/CANOpen bus cable, M12 to M12, PUR cable 5-pin, straight
V15-G-10M-PUR-CAN-V15-G	DeviceNet/CANOpen bus cable, M12 to M12, PUR cable 5-pin, straight
V15S-T-CAN/DN-V15	T distributor, M12 socket on M12 connector/socket
ICZ-TR-CAN/DN-V15	Terminal resistor for DeviceNet, CANopen



Electrical Connection

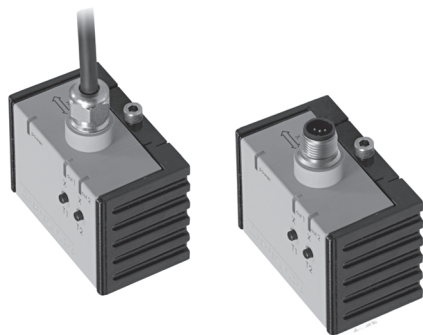


INX360D-F99-B16-V15
 INY030D-F99-B16-V15
 INY360D-F99-B16-V15
 INX360D-F99-B20-V15
 INY360D-F99-B20-V15



Wire colors in accordance with EN 60947-5-2

1	BN	(brown)
2	WH	(white)
3	BU	(blue)
4	BK	(black)
5	GY	(gray)



Properties

- 1 axis measurement
- 360° measurement range
- Analog and switching outputs
- Cable and connector versions

Benefits

- Push Button configurable
- LED indication
- Configurable range and switch point angles

Technical Data

For detailed data and product description refer to the data sheets at www.pepperl-fuchs.us

General Data

Type	Inclination sensor, 1-axis
Measurement range	0 ... 360 °
Absolute accuracy	≤ ± 0.5 °
Resolution	≤ 0.1 °
Operating voltage U_B	10 ... 30 V DC
No-load supply current	≤ 25 mA
Switch output	
Output type	2 switching outputs PNP, NO, reverse polarity and short-circuit protected
Operating current	≤ 100 mA
Analog output	
Output type	1 current output 4 ... 20 mA
Load resistor	0 ... 200 Ω at $U_B = 10 ... 18$ V 0 ... 500 Ω at $U_B = 18 ... 30$ V
Ambient temperature	-40 ... 85 °C (-40 ... 185 °F)
Housing material	PA
Protection degree	IP68 / IP69K

Model Number

	INX360D-F99-I2E2-5M	INX360D-F99-U2E2-5M	INX360D-F99-I2E2-V15	INX360D-F99-U2E2-V15
Analog output				
Output type	1 current output 4 ... 20 mA	1 voltage output 0 ... 5 V		
Load resistor	0 ... 200 Ω at $U_B = 10 ... 18$ V 0 ... 500 Ω at $U_B = 18 ... 30$ V			
	≥ 1 kΩ			
Connection type	M12 x 1 connector, 5-pin			
	5 m, PUR cable 5 x 0.5 mm ²			

Approvals and Certificates

CSA approval	cCSAus Listed, General Purpose, Class 2 Power Source		
e1 Type approval	2006/28/EG		
CCC approval	CCC approval / marking not required for sensors rated ≤ 36 V		

Dimensions

Length L [mm]	44	
Width W [mm]	65	
Height H [mm]	37	
Connector length l _c [mm]	22	18.5

Accessories

These and more accessories can be found in chapter 10

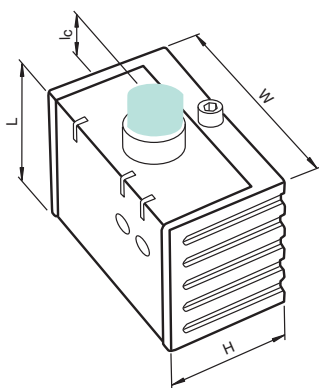
See pages from 970 ... for cordsets See pages 1066 ... for mounting accessories

V15-G-2M-PUR

Female cordset, M12, 5-pin, PUR cable, straight

V15-W-2M-PUR

Female cordset, M12, 5-pin, PUR cable, angled

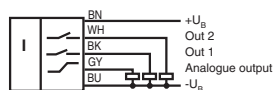


Electrical Connection



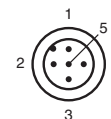
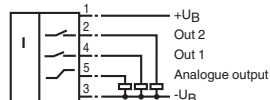
INX360D-F99-I2E2-5M
INX360D-F99-U2E2-5M

Standard symbol/Connection:



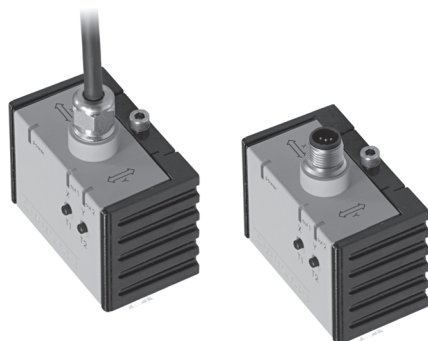
INX360D-F99-I2E2-V15
INX360D-F99-U2E2-V15

Standard symbol/Connection:



Wire colors in accordance with EN 60947-5-2

1	BN	(brown)
2	WH	(white)
3	BU	(blue)
4	BK	(black)
5	GY	(gray)

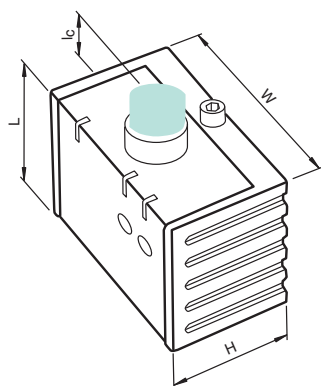


Properties

- 2 axes measurement
- 30° and 360° measurement range versions
- Analog and switching outputs
- Cable and connector versions

Benefits

- Push Button configurable
- LED indication
- Configurable range and switch point angles



Technical Data

For detailed data and product description refer to the data sheets at www.pepperl-fuchs.us

General Data

Type	Inclination sensor, 2-axis
Operating voltage U_B	10 ... 30 V DC
No-load supply current	≤ 25 mA
Switch output	
Output type	2 switching outputs PNP, NO, reverse polarity and short-circuit protected
Operating current	≤ 100 mA
Analog output	
Output type	2 current outputs 4 ... 20 mA (one output for each axis)
Load resistor	0 ... 200 Ω at $U_B = 10 \dots 18$ V 0 ... 500 Ω at $U_B = 18 \dots 30$ V
Ambient temperature	-40 ... 85 °C (-40 ... 185 °F)
Housing material	PA
Protection degree	IP68 / IP69K

Model Number

		INY360D-F99-2I2E2-5M	INY030D-F99-2I2E2-5M	INY360D-F99-2I2E2-V17	INY030D-F99-2I2E2-V17
Measurement range	0 ... 360 °	●	●	●	●
	-15 ... 15 °	●	●	●	●
Absolute accuracy	$\leq \pm 0.5$ °	●	●	●	●
	$\leq \pm 0.2$ °	●	●	●	●
Resolution	≤ 0.1 °	●	●	●	●
	≤ 0.01 °	●	●	●	●
Connection type	8-pin, M12 x 1 connector	●	●	●	●
	5 m, PUR cable 7 x 0.5 mm ²	●	●	●	●

Approvals and Certificates

e1 Type approval	2006/28/EG	●	●
CSA approval	cCSAus Listed, General Purpose, Class 2 Power Source	●	●
CCC approval	CCC approval / marking not required for sensors rated ≤ 36 V	●	●

Dimensions

Length L [mm]	44
Width W [mm]	65
Height H [mm]	37
Connector length l_c [mm]	22 18.5

Accessories

These and more accessories can be found in chapter 10

See pages from 970 ... for cordsets See pages 1066 ... for mounting accessories

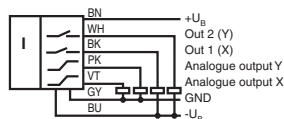
V17-G-2M-PUR	Female cordset, M12, 8-pin, shielded, 2 m PUR cable, straight
V17-G-5M-PUR	Female cordset, M12, 8-pin, shielded, 5 m PUR cable, straight
V17-G-10M-PUR	Female cordset, M12, 8-pin, shielded, 10 m PUR cable, straight
V17-G-10M-PVC ABG	Female cordset, M12, 8-pin, shielded, 10 m PVC cable, straight

Electrical Connection



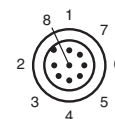
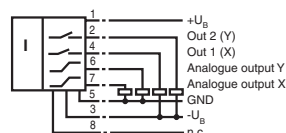
INY030D-F99-2I2E2-5M
INY360D-F99-2I2E2-5M

Standard symbol/Connection:



INY360D-F99-2I2E2-V17
INY030D-F99-2I2E2-V17

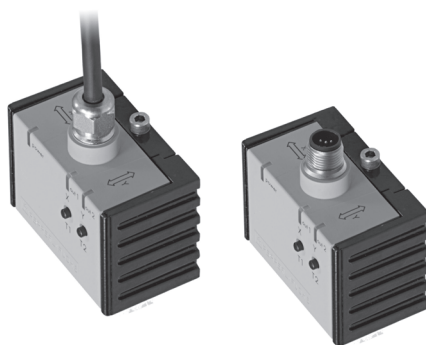
Standard symbol/Connection:



Wire colors

1	WH	(white)
2	BN	(brown)
3	GN	(green)
4	YE	(yellow)
5	GY	(gray)
6	PK	(pink)
7	BU	(blue)
8	shield	





Properties

- 2 axes measurement
- 360° measurement range
- Analog and switching outputs
- Cable and connector versions

Benefits

- Push Button configurable
- LED indication
- Configurable range and switch point angles

Technical Data

For detailed data and product description refer to the data sheets at www.pepperl-fuchs.us

General Data

Type	Inclination sensor, 2-axis
Measurement range	0 ... 360 °
Absolute accuracy	≤ ± 0.5 °
Resolution	≤ 0.1 °
Operating voltage U _B	10 ... 30 V DC
No-load supply current	≤ 25 mA
Switch output	
Output type	2 switch outputs PNP, NO, reverse polarity protected, short-circuit protected
Operating current	≤ 100 mA
Analog output	
Output type	2 voltage outputs 0 ... 5 V (one output for each axis)
Load resistor	≥ 1 kΩ
Ambient temperature	-40 ... 85 °C (-40 ... 185 °F)
Housing material	PA
Protection degree	IP68 / IP69K

Model Number

Connection type	8-pin, M12 x 1 connector 5 m, PUR cable 7 x 0.5 mm ²	INY360D-F99-2U2E2-5M	INY360D-F99-2U2E2-V17

Approvals and Certificates

e1 Type approval	2006/28/EG		
CSA approval	cCSAus Listed, General Purpose, Class 2 Power Source		
CCC approval	CCC approval / marking not required for sensors rated ≤36 V		

Dimensions

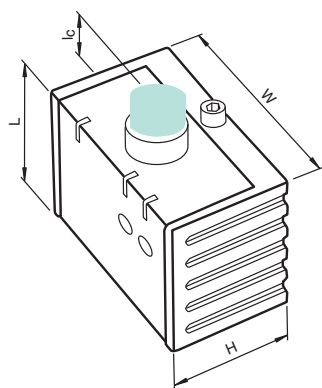
Length L [mm]	44	
Width W [mm]	65	
Height H [mm]	37	
Connector length l _c [mm]	22	18.5

Accessories

These and more accessories can be found in chapter 10

See pages from 970 ... for cordsets See pages 1066 ... for mounting accessories

V17-G-2M-PUR	Female cordset, M12, 8-pin, shielded, 2 m PUR cable, straight
V17-G-5M-PUR	Female cordset, M12, 8-pin, shielded, 5 m PUR cable, straight
V17-G-10M-PUR	Female cordset, M12, 8-pin, shielded, 10 m PUR cable, straight
V17-G-10M-PVC ABG	Female cordset, M12, 8-pin, shielded, 10 m PVC cable, straight

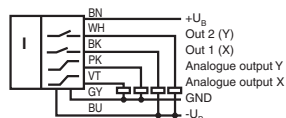


Electrical Connection



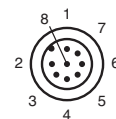
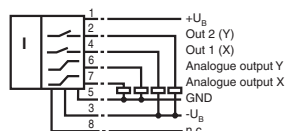
INY360D-F99-2U2E2-5M

Standard symbol/Connection:



INY360D-F99-2U2E2-V17

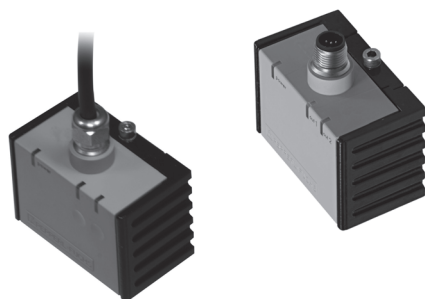
Standard symbol/Connection:



Wire colors

1	WH	(white)
2	BN	(brown)
3	GN	(green)
4	YE	(yellow)
5	GY	(gray)
6	PK	(pink)
7	BU	(blue)
8	shield	





Properties

- 2 axes measurement
- 30° measurement range
- 0 V ... 10 V and 0.5 V ... 4.5 V analog output models
- Cable and connector versions

Technical Data

For detailed data and product description refer to the data sheets at www.pepperl-fuchs.us

General Data

Type	Inclination sensor, 2-axis
Measurement range	-15 ... 15 °
Absolute accuracy	≤ ± 0.2 °
Resolution	≤ 0.01 °
No-load supply current	≤ 25 mA
Load resistor	≥ 1 kΩ
Ambient temperature	-40 ... 85 °C (-40 ... 185 °F)
Housing material	PA
Protection degree	IP68 / IP69K

Model Number

		INY030D-F99-2U-5M	INY030D-F99-2U-5M-Y239182	INY030D-F99-2U-V15	INY030D-F99-2U-V15-Y239181
Operating voltage U_B	10 ... 30 V DC				
Output type	18 ... 30 V DC 2 voltage outputs 0 ... 10 V (one output for each axis) 2 voltage outputs 0.5 ... 4.5 V (one output for each axis)	●	●	●	●
Connection type	5 m, PUR cable 5 x 0.5 mm ² M12 x 1 connector, 5-pin	●	●	●	●

Approvals and Certificates

e1 Type approval	2006/28/EG	●	●	●	●
CSA approval	cCSAus Listed, General Purpose, Class 2 Power Source	●	●	●	●
CCC approval	CCC approval / marking not required for sensors rated ≤36 V				

Dimensions

Length L [mm]	44
Width W [mm]	65
Height H [mm]	37
Connector length l_c [mm]	18.5

Accessories

These and more accessories can be found in chapter 10

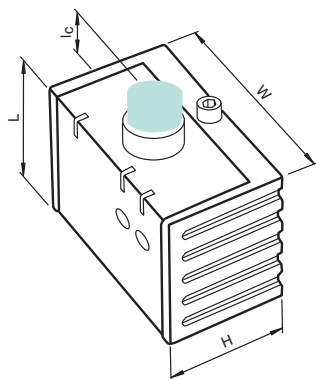
See pages from 970 ... for cordsets See pages 1066 ... for mounting accessories

V15-G-2M-PUR

Female cordset, M12, 5-pin, PUR cable, straight

V15-W-2M-PUR

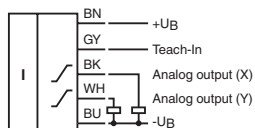
Female cordset, M12, 5-pin, PUR cable, angled



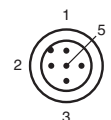
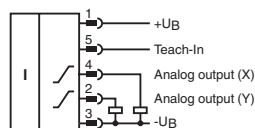
Electrical Connection



INY030D-F99-2U-5M
INY030D-F99-2U-5M-Y239182



INY030D-F99-2U-V15
INY030D-F99-2U-V15-Y239181



Wire colors in accordance with EN 60947-5-2

1	BN	(brown)
2	WH	(white)
3	BU	(blue)
4	BK	(black)
5	GY	(gray)





Properties

- 1 and 2 axes measurement
- $\pm 2g$ measurement range
- Analog output(s)
- Connector version

Technical Data

For detailed data and product description refer to the data sheets at www.pepperl-fuchs.us

General Data

Measurement range	-2 ... 2 g
Resolution	≤ 5 mg
Frequency range	0 ... 100 Hz
Operating voltage U_B	10 ... 30 V DC
No-load supply current	≤ 25 mA
Operating display	LED, green
TEACH-IN indication	LED, yellow
Zero signal	12 mA
Slope of output characteristic	4 mA / g
Linearity error	± 1.2 %
Analog output	
Load resistor	0 ... 200 Ω at $U_B = 10$... 18 V
	0 ... 500 Ω at $U_B = 18$... 30 V
Ambient temperature	-40 ... 85 °C (-40 ... 185 °F)
Housing material	PA
Protection degree	IP68 / IP69K
Connection type	M12 x 1 connector, 5-pin



Model Number

		ACX04-F99-I-V15	ACY04-F99-2I-V15
Type	1 axis acceleration sensor	●	
	2 axis acceleration sensor		●
Analog output			
Output type	1 current output 4 ... 20 mA	●	
	2 current outputs 4 ... 20 mA (one output for each axis)		●

Approvals and Certificates

CSA approval	cCSAus Listed, General Purpose	●	●
CCC approval	CCC approval / marking not required for sensors rated ≤ 36 V		
e1 Type approval	2006/28/EG	●	●

Dimensions

Length L [mm]	44
Width W [mm]	65
Height H [mm]	37
Connector length l_c [mm]	18.5

Accessories

These and more accessories can be found in chapter 10

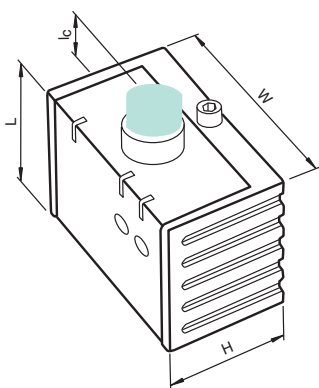
See pages from 970 ... for cordsets See pages 1066 ... for mounting accessories

V15-W-2M-PUR

Female cordset, M12, 5-pin, 2 m PUR cable, angled

V15-G-2M-PUR

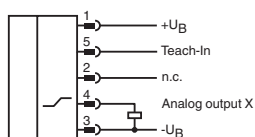
Female cordset, M12, 5-pin, 2 m PUR cable, straight



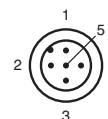
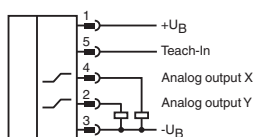
Electrical Connection



ACX04-F99-I-V15



ACY04-F99-2I-V15



Wire colors in accordance with EN 60947-5-2

1	BN	(brown)
2	WH	(white)
3	BU	(blue)
4	BK	(black)
5	GY	(gray)





Refer to General Notes Relating to Product Information

Pepperl+Fuchs Group
www.pepperl-fuchs.com

USA: +1 330 486 0001
fa-info@us.pepperl-fuchs.com

Germany: +49 621 776-4411
fa-info@de.pepperl-fuchs.com

Copyright Pepperl+Fuchs
Singapore: +65 6779 9091
fa-info@sg.pepperl-fuchs.com

PF **PEPPERL+FUCHS**
SENSING YOUR NEEDS

Courtesy of Steven Engineering, Inc - (800) 258-9200 - sales@steveneng.com - www.stevenengineering.com