



HOMELINE® **Circuit Breaker Load Centers**

CONTENTS

Description	Class	Pages
Application Data	1170.....	2-5
Accessories	1170.....	6
Technical Data	1170.....	7-8
Dimensions.....	1170.....	9
Wiring Diagrams	1170.....	10-11



HOMELINE®

Circuit Breaker Load Centers

Application Data

Type

Circuit Breaker load centers for use on ac systems. Underwriter Laboratories listed under file E-6294 (panel-boards). Federal Specifications W-P-115b Type 1, Class 2.

Service

- 1Ø3W 120/240Vac

Ratings

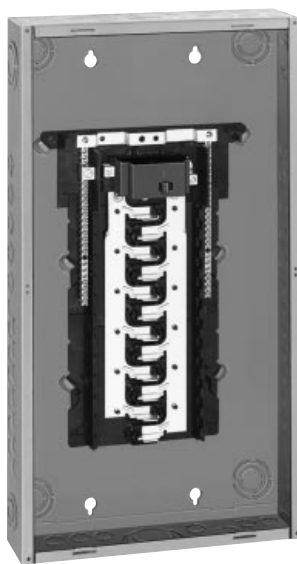
- Main Lugs 70-225A
- Main Breaker 50-225A

UL Listed

- Suitable for use as service equipment.
- 75°C wire rating.

Class CTL

- UL Listed Class CTL load centers
- Meets paragraph 384-15 of the NEC.



HOM24M125C

HOM One Pole HOM Two Pole HOMT One Pole Tandem HOMT Quad Breaker



1 Space Required



2 Spaces Required



1 Space Required



2 Spaces Required

Hom One Pole GFI (With Ground Fault Circuit Interrupter)



1 Space Required

HOM Two Pole GFI (With Ground Fault Circuit Interrupter)



2 Spaces Required

HOM SURGEBREAKER™ Surge Arrester



2 Spaces Required

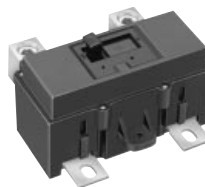
Branch Circuit Breakers

10,000 AIR

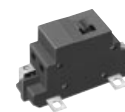
HOM	1-pole	15-50A
HOMT	1-pole	15-20A
HOMT	2-pole	15-30A
HOM	2-pole	15-125A
HOM-GFI	1-pole	15-20A
HOM-GFI	2-pole	15, 20, 30-40A

Main Breaker – QOM

22,000 AIR



QOM2 Frame Size
100-225 Amperes



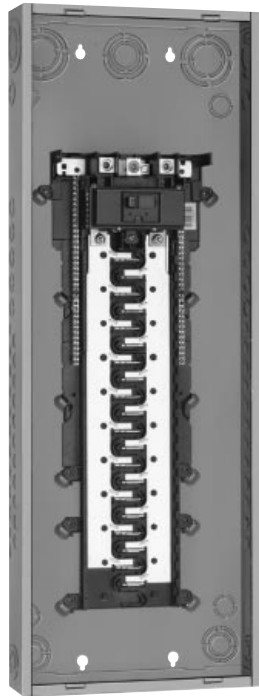
QOM1 Frame Size
50-125 Amperes



HOMELINE®

Circuit Breaker Load Centers

Application Data



HOM40M200C/without cover

Indoor Enclosures (NEMA Type 1):

- Welded sheet steel with knockouts at top, bottom, back, and sides.
- Finish: Gray baked enamel, electrodeposited over cleaned phosphatized steel
- Most indoor enclosures are 14.25 wide. (See dimensions)



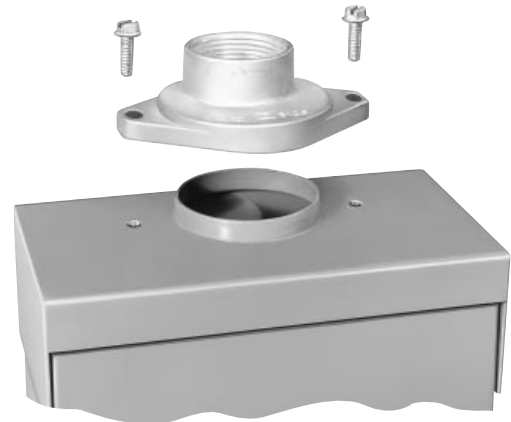
Indoor Covers:

- Doors to cover circuit breaker handles, except on 2-4 and 6-12 circuit models.
- Combination flush and surface cover with latch opening door included with load centers.
- Automatic flush adjustment-standard.
- Triple lead cover screws for fast cover installation.
- Shutter type twistouts.
- HOMFP snap-in type filler plates available for all covers.



Rainproof Enclosures (NEMA Type 3R):

- Complete enclosure includes interior trim and door.
- Welded galvanealed steel.
- Finish: Gray baked enamel, electrodeposited over clean phosphatized galvanealed steel.
- RB devices have provisions for interchangeable bolt-on hub.



Bolt-on Hubs:

- Hubs available for 3/4" to 4" conduit size.
- No gasket required with hubs from 3/4" to 2 1/2" when used on RB type load centers.
- 3" to 4" hubs for field cut openings on "R" type load centers.



HOMELINE®
Circuit Breaker Load Centers
Application Data

Single Phase, 2 through 12 Circuit, 70 through 100 Amperes, fixed mains

UL Listed

- Suitable for use as service equipment.
 - 75°C wire rating.
- (See Technical Information pages 7-11).

Short Circuit Current Rating

- Main lugs up to 10,000 Amperes.
- (See Technical Information pages 7-11).

Interior

- Tin plated aluminum bus.



HOM612L100F

Mains

- Factory installed fixed main lugs.
 - Top mains positioning only.
 - Top or bottom feed.
- (See Technical Information pages 7-11).

Cover

- Flush or surface cover included with load centers.



Flush Cover

Single Phase, 12 Through 42 circuit, 100 through 225 Amperes, convertible mains

UL Listed

- Suitable for use as service equipment.
 - 75°C wire rating.
- (See Technical Information pages 7-11).

Short Circuit Current Rating

- Main lugs up to 10,000 Amperes.
 - Main breaker 10,000 Amps Interrupting Rating standard.
 - 22,000 Amps Interrupting Rating main breaker kits (Refer to pg. 6 Main Breaker Kits).
- (See Technical Information pages 7-11).

Interior

- Tin plated aluminum bus.
- Removable interior.
- Interior secured to enclosure with captive screws.

Mains

Factory installed main lugs convertible to main breaker:

Load Center Amperage	Main Breaker Kit Amperage
125	50 - 125
150	100 - 150
200	100 - 200
225	100 - 225

Factory installed main breaker convertible to main lugs:

Main Breaker Amperage	Main Lug Kit Amperage	Load Center Amperage
100	125	100
125	125	125
150	225	150
200	225	200
225	225	225

Top or bottom mains positioning, by rotating complete indoor load center 180°.

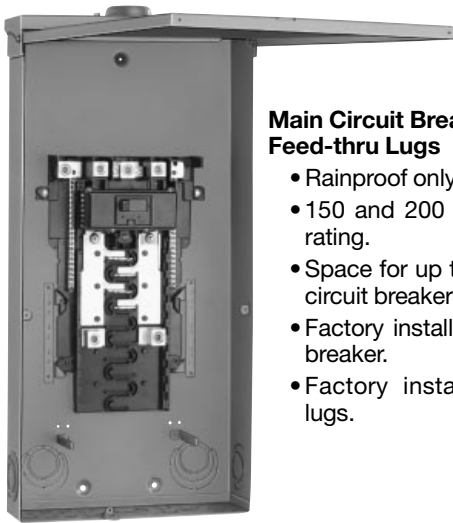
(See Technical Information pages 7-11).

Cover

- Combination flush and surface cover included with load centers.
- Optional door lock kit for indoor load centers.



HOMELINE®
Circuit Breaker Load Centers
Application Data



Main Circuit Breaker with Feed-thru Lugs

- Rainproof only.
- 150 and 200 Ampere mains rating.
- Space for up to 8 single pole circuit breakers.
- Factory installed main circuit breaker.
- Factory installed feed-thru lugs.

HOM816M200FTRB

Universal Mains Load Center with Feed-thru Lugs

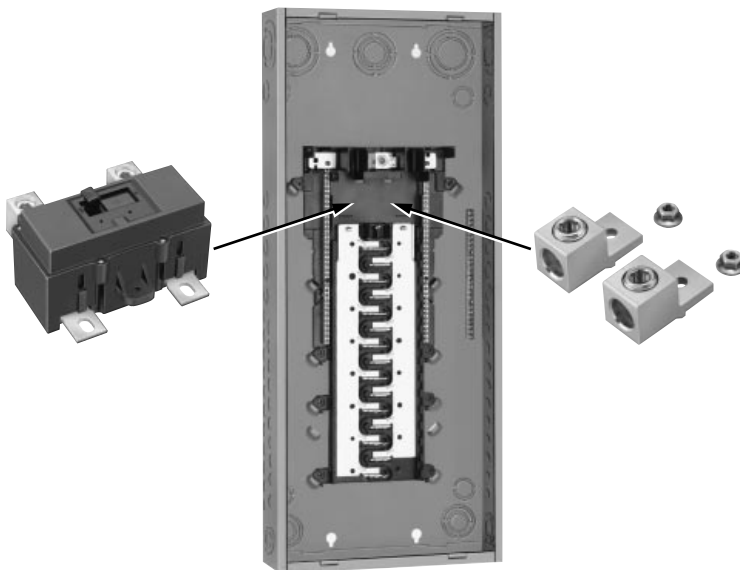
- No factory installed main circuit breaker or main lugs.
- 200 Ampere mains rating.
- Feed-thru lugs are factory installed.
- Rainproof only.
- Space for up to 8 single pole circuit breakers.
- Purchase main circuit breaker kit and field install.



HOM816U200FTRB

Universal Mains Load Centers “Studs Only”

- No factory installed main circuit breaker or main lugs.
- 200 Ampere mains rating.
- Indicated by “U” in catalog number.
- Purchase main lug kit or main circuit breaker kit and field install.
- Combination flush/surface cover included with indoor load center.
- Factory installed ground bar kit.



HOM3040U200TC

Main Circuit Breaker Mobile Home Load Centers

- Covers included with load centers.
- Factory installed grounding bar - indicated by “T” in catalog number.
- Top or bottom feed on incoming service by rotating complete load center 180 degrees.



SQUARE D

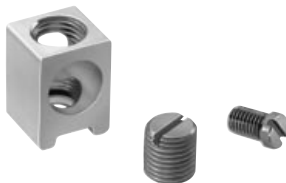
HOMELINE® **Circuit Breaker Load Centers** **Accessories**



PK15GTA

Grounding Bar Kits

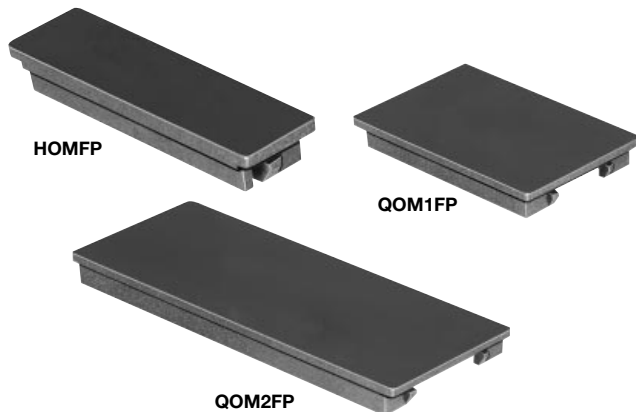
- Field installable in all load centers.
- Wire size of terminals (See Technical Information page 8.)
- Suitable for copper or aluminum wire.
- Available with large lug PK15GTA-L, PK18GTA-L and PK23GTA-L. (See Technical Information page 8).



LK100AN

Auxiliary Neutral Lugs

- UL Listed for copper or aluminum wire.
 - Field installable on neutral assembly.
- | | |
|---------|---------------------------------|
| LK70AN | #12 to #2 Al or #14 to 4 Cu AWG |
| LK100AN | #6 to #2/0 AWG |



HOMFP

QOM1FP

QOM2FP

Cover Filler Plates

- Fast to install – snap-in type.
- HOMFP branch circuit.
- QOM1FP 50 through 125 Ampere main breaker.
- QOM2FP 150 through 225 Ampere main breaker.

Flush Lock Kits

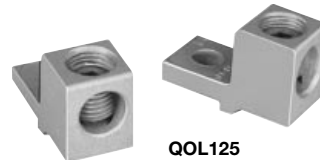
- Available for indoor load centers.
- Two keys provided with each lock kit.
- PK6FL for single phase convertible 8-42 circuit load centers.



PK6FL

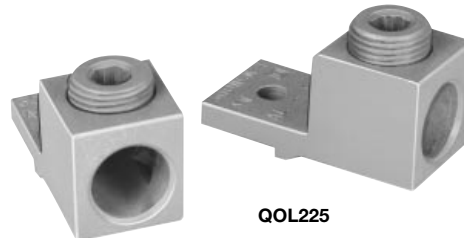
Main Lugs Kits

- Field installable in main breaker or main lugs load centers.



QOL125

- 125 Ampere kit usable in 100 through 125 Ampere load centers.

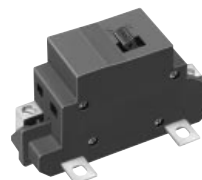


QOL225

- 225 Ampere kit usable in 150 through 225 Ampere load centers.

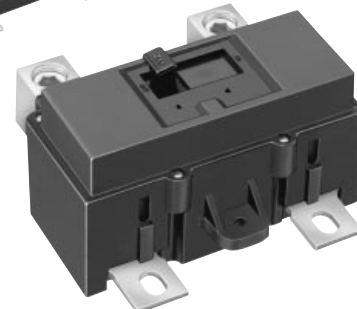
Main Breaker Kits

- Field installable in main lugs or main breaker load centers.
- 22,000 Amps Interrupting Rating main breaker kit 50 through 225 Amperes usable with 10,000 Amps Interrupting Rating branch circuit breakers.



50-125 Amperes

100-225 Amperes



HOMELINE®

Circuit Breaker Load Centers

Technical Information

Main Rating in Amperes	Load Center Catalog Number	Type of Enclosure	Load Center Cover Catalog Number	UL Listed Service Equipment	UL Short Circuit Rating ■ (Amperes)	Main Wire Size AWG/kcmil		Wire Bending Space Dimension (IN.)	Box No.	Top or Bottom Mains Position
						Al	Cu			

1 Phase 3 Wire Fixed Main Lugs

70	HOM2-4L70F/S HOM2-4L70RB	Indoor Rainproof	Included Included	B	10,000	#12-#3	#14-#4	2.0	1 1R	Top Top
100	HOM6-12L100F/S HOM6-12L100RB	Indoor Rainproof	Included Included	B, C	10,000	#8-#1		3.0	2 2R	Top Top

1 Phase 3 Wire Convertible Main Lugs

125	HOM8-16L125C	Indoor	Included	B, C	10,000	#4-2/0	6.0	4	BOTH
	HOM8-16L125TC	Indoor	Included	B, C	10,000	#4-2/0	6.0	4	BOTH
	HOM8-16L125RB	Rainproof	Included	B, C	10,000	#4-2/0	6.0	3R	TOP
	HOM12L125C	Indoor	Included	B, C	10,000	#4-2/0	6.0	4	BOTH
	HOM12L125RB	Rainproof	Included	B, C	10,000	#4-2/0	6.0	3R	TOP
	HOM12-24L125TC	Indoor	Included	B, C	10,000	#4-2/0	6.0	4	BOTH
	HOM16-24L125C	Indoor	Included	B	10,000	#4-2/0	6.0	5	BOTH
	HOM20L125C	Indoor	Included	B	10,000	#4-2/0	6.0	5	BOTH
	HOM20L125RB	Rainproof	Included	B	10,000	#4-2/0	6.0	4R	TOP
	HOM20-24L125TC	Indoor	Included	B	10,000	#4-2/0	6.0	5	BOTH
	HOM24L125TC	Indoor	Included	B	10,000	#4-2/0	6.0	5	BOTH
150	HOM30L150C	Indoor	Included	B	10,000	#4-250	8.5	7	BOTH
200	HOM12L200RB	Rainproof	Included	B, C	10,000	#4-250	8.5	5R	TOP
	HOM30L200C	Indoor	Included	B	10,000	#4-250	8.5	7	BOTH
	HOM30L200RB	Rainproof	Included	B	10,000	#4-250	8.5	7R	TOP
	HOM30-40L200TC	Indoor	Included	B	10,000	#4-250	8.5	7	BOTH
	HOM40L200C	Indoor	Included	B	10,000	#4-250	8.5	8	BOTH
	HOM40L200RB	Rainproof	Included	B	10,000	#4-250	8.5	8R	TOP
225	HOM42L225C	Indoor	Included	B	10,000	#4-250	8.5	8	BOTH

1 Phase 3 Wire Convertible Main Breaker

100	HOM8-16M100C	Indoor	Included	A, D	10,000	#6-1	4.5	3	BOTH
	HOM8-16M100TC	Indoor	Included	A, D	10,000	#6-1	4.5	3	BOTH
	HOM8-16M100RB	Rainproof	Included	A, D	10,000	#4-2/0	6.0	3R	TOP
	HOM12M100C	Indoor	Included	A, D	10,000	#4-2/0	6.0	4	BOTH
	HOM12M100RB	Rainproof	Included	A, D	10,000	#4-2/0	6.0	3R	TOP
	HOM12-24M100TC	Indoor	Included	A, D	10,000	#4-2/0	6.0	4	BOTH
	HOM20M100C	Indoor	Included	A	10,000	#4-2/0	6.0	5	BOTH
	HOM20M100RB	Rainproof	Included	A	10,000	#4-2/0	6.0	4R	TOP
	HOM24M100C	Indoor	Included	A	10,000	#4-2/0	6.0	5	BOTH
125	HOM12-24M125C	Indoor	Included	A, D	10,000	#4-2/0	6.0	4	BOTH
	HOM12-24M125TC	Indoor	Included	A, D	10,000	#4-2/0	6.0	4	BOTH
	HOM24M125C	Indoor	Included	A	10,000	#4-2/0	6.0	5	BOTH
	HOM24M125RB	Rainproof	Included	A	10,000	#4-2/0	6.0	6R	TOP
150	HOM16-32M150TC	Indoor	Included	A	10,000	#4-250	8.5	6	BOTH
	HOM20-30M150TC	Indoor	Included	A	10,000	#4-250	8.5	6	BOTH
	HOM30M150C	Indoor	Included	A	10,000	#4-250	8.5	7	BOTH
	HOM30M150RB	Rainproof	Included	A	10,000	#4-250	8.5	7R	TOP
200	HOM12-24M200TC	Indoor	Included	A, D	10,000	#4-250	8.5	6	BOTH
	HOM16-32M200TC	Indoor	Included	A	10,000	#4-250	8.5	6	BOTH
	HOM20-40M200C	Indoor	Included	A	10,000	#4-250	8.5	6	BOTH
	HOM20-40M200TC	Indoor	Included	A	10,000	#4-250	8.5	6	BOTH
	HOM20-40M200RB	Rainproof	Included	A	10,000	#4-250	8.5	6R	TOP
	HOM30M200C	Indoor	Included	A	10,000	#4-250	8.5	7	BOTH
	HOM30M200RB	Rainproof	Included	A	10,000	#4-250	8.5	7R	TOP
	HOM30-40M200TC	Indoor	Included	A	10,000	#4-250	8.5	7	BOTH
	HOM40M200C	Indoor	Included	A	10,000	#4-250	8.5	8	BOTH
	HOM40M200RB	Rainproof	Included	A	10,000	#4-250	8.5	8R	TOP
225	HOM42M225C	Indoor	Included	A	10,000	#4-250	8.5	8	BOTH

1 Phase 3 Wire Universal Mains

200	HOM16-32U200TC	Indoor	Included	B	10,000	#4-250	8.5	6	BOTH
	HOM20-40U200TC	Indoor	Included	B	10,000	#4-250	8.5	6	BOTH
	HOM30-40U200TC	Indoor	Included	B	10,000	#4-250	8.5	7	BOTH

1 Phase 3 Wire Main Breaker Feed-Thru

150	HOM8-16M150FTRB	Rainproof	Included	A	10,000	#4-250	8.5	6R	TOP
200	HOM8-16M200FTRB	Rainproof	Included	A	10,000	#4-250	8.5	6R	TOP

1 Phase 3 Wire Universal Mains Feed-Thru

200	HOM8-16U200FTRB	Rainproof	Included	B	10,000	#4-250	8.5	6R	TOP
-----	-----------------	-----------	----------	---	--------	--------	-----	----	-----

A - UL Listed suitable for use as service equipment (neutral bonded at the time of installation) with factory installed service disconnect.

B - UL Listed suitable for use as service equipment (neutral bonded at the time of installation) with field installed service disconnect.

C - UL Listed suitable for use as service equipment (neutral bonded at the time of installation) when not more than six service disconnecting means are provided and when not used as a lighting and appliance branch circuit panelboard.

D - UL Listed suitable for use as service equipment (neutral bonded at the time of installation) with field installed main lugs when not more than six disconnecting means are provided and when not used as a lighting and appliance branch circuit panelboard.

■ - UL short circuit rating with optional QOM-VH main circuit breaker - 22,000 Amps Interrupting Rating.



SQUARE D

HOMELINE®

Circuit Breaker Load Centers

Technical Information

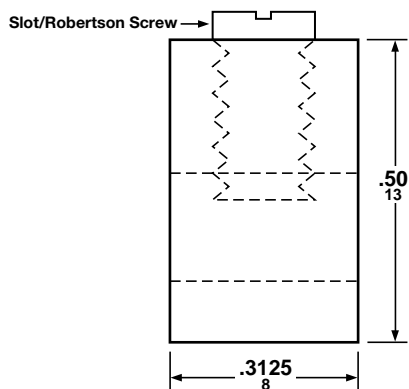
Grounding Bar Kits

All PK Equipment Grounding Kits are supplied with mounting screws, necessary installation instructions and an "Equipment Grounding Terminal" self-adhesive label.

Catalog Number	Total Quantity	Terminals						Approximate Overall Length	C To C Distance Between Mounting Holes	Mounting
		Quantity Each Size See Table "B" For Wire Range								
		I	II	III	IV	V	VI			
PK0GTA-2	2						2	1 ³ / ₄ "	One Hole	Top
PK0GTA-6	6					6		4 ³⁹ / ₆₄ "	1 ¹¹ / ₁₆ "	Top
PK3GTA-1	3	3						1 ³ / ₈ "	One Hole	Top
PK4GTA	4	4						1 ⁵ / ₈ "	One Hole	Top
PK5GTA	5	5						2 ¹ / ₄ "	1 ¹ / ₄ "	Top
PK7GTA	7	7						2 ⁷ / ₈ "	1 ¹ / ₄ "	Top or Side
PK9GTA-1	9	9						3 ¹ / ₄ "	One Hole	Top
PK9GTA	9	9						3 ²⁵ / ₃₂ "	3 ¹ / ₈ "	Top
PK12GTA	12	12						4 ⁴⁵ / ₆₄ "	3 ¹ / ₈ "	Top
PK15GTA	15	15						5 ⁵ / ₈ "	3 ¹ / ₈ "	Top
PK15GTA-L	16	15	1					8 ¹ / ₈ "	3 ¹ / ₈ "	Top
PK15GTA-6	21	15			6			5 ⁷ / ₈ "	▲	Top
PK18GTA	18	18						6 ⁹ / ₁₆ "	3 ¹ / ₈ "	Top
PK18GTA-L	19	18	1					8 ¹³ / ₁₆ "	3 ¹ / ₈ "	Top
PK23GTA	23	23						8 ⁷ / ₆₄ "	3 ¹ / ₈ "	Top
PK23GTA-L	24	23	1					9 ⁷ / ₁₆ "	3 ¹ / ₈ "	Top
PK27GTA	27 or ● 26	27 26		1				9 ²³ / ₆₄ "	3 ¹ / ₈ "	Top

● PK27GTA includes one main grounding lug which mounts by utilizing two terminal screws, requires three terminals for mounting.

▲ 3¹/₈" on small terminals; 5¹/₄" on large terminals.



Standard Ground Bar Profile Dimensions

Table B

Size	Cu (Awg)	Al (Awg)
I	(1) #14 to #4 or (2) #14 or #12	(1) #12 to #4 or (2) #12 or #10
II	(1) #1 to 4/0	(1) #1 to 4/0
III	(1) #6 to 2/0	(1) #6 to 2/0
IV	(1) #6 to 3/0	(1) #6 to 3/0
V	(1) #14 to 1/0	(1) #14 to 1/0
VI	(1) #10 to 2/0	(1) #6 to 2/0



HOMELINE®

Circuit Breaker Load Centers

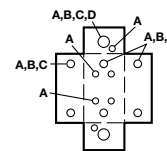
Knockouts, Dimensions

Knockout Information and Enclosure Dimensions

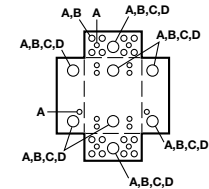
Knockouts							
Symbol	A	B	C	D	E	F	G
Conduit Size	½	¾	1	1¼	1½	2	2½

Indoor

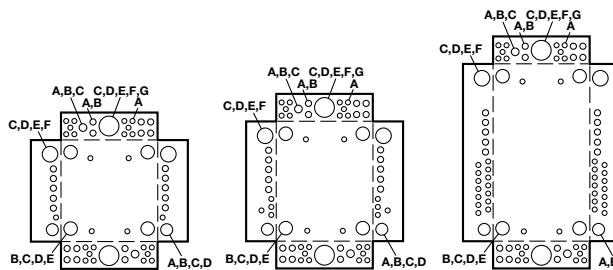
Dimensions						
Box No.	W		H		D	
	IN.	mm	IN.	mm	IN.	mm
1	4.81	122	9.30	236	3.19	81
2	8.88	226	12.57	319	3.80	97
3	14.25	362	15.00	381	3.75	95
4	14.25	362	18.00	457	3.75	95
5	14.25	362	26.25	667	3.75	95
6	14.25	362	30.00	762	3.75	95
7	14.25	362	34.00	864	3.75	95
8	14.25	362	39.50	1003	3.75	95



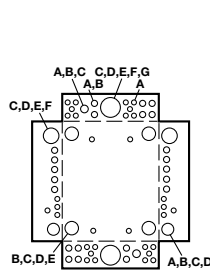
Box 1



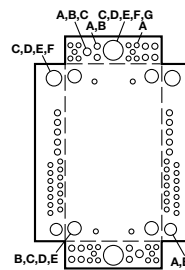
Box 2



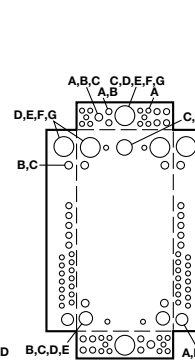
Box 3



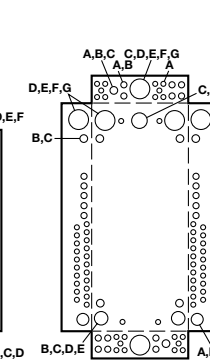
Box 4



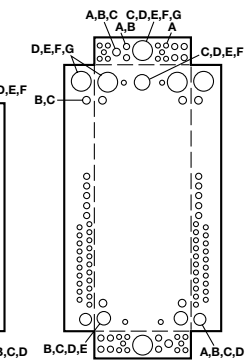
Box 5



Box 6



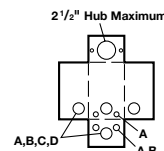
Box 7



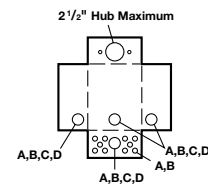
Box 8

Rainproof

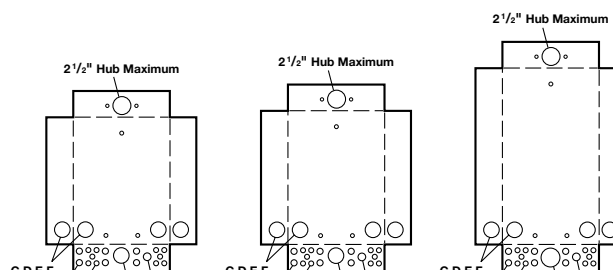
Dimensions						
Box No.	W		H		D	
	IN.	mm	IN.	mm	IN.	mm
1R	4.88	124	9.50	241	4.00	102
2R	8.88	226	12.65	321	4.27	108
3R	14.25	362	19.00	483	4.50	114
4R	14.25	362	22.25	565	4.50	114
5R	14.25	362	26.25	667	4.50	114
6R	14.25	362	30.00	762	4.50	114
7R	14.25	362	34.00	864	4.50	114
8R	14.25	362	39.50	1003	4.50	114



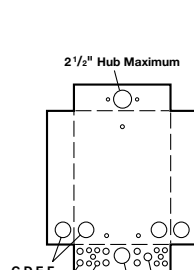
Box 1R



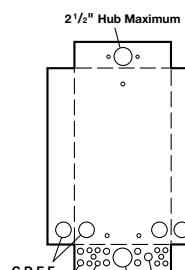
Box 2R



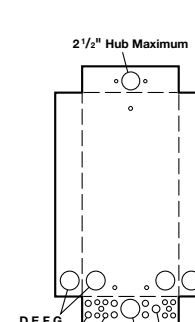
Box 3R



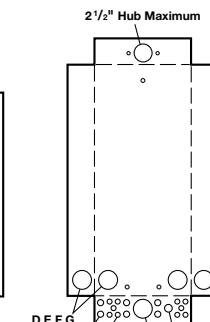
Box 4R



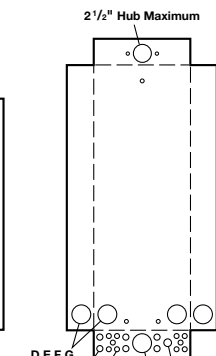
Box 5R



Box 6R



Box 7R



Box 8R



SQUARE D

HOMELINE®

Circuit Breaker Load Centers

Wiring Diagrams

1. Number of circuits maximum.
2. Amperage rating.
3. Box catalog number.
4. See panelboard interior for catalog number.
5. Service equipment marking.
6. Short circuit ratings.
7. Wire range and lug torque data table.
8. Use of unused neutral branch terminals for equipment grounding, service equipment application only.
9. Catalog number for secondary surge arrester
10. Catalog number of covers
11. U.L. Listing.
12. Neutral lug for 3 AWG or larger wire.
13. Alternate wiring diagram for main circuit breaker or main lug.
14. Square D circuit breakers that may be used in this panelboard.
15. Voltage ratings.
16. Short Circuit ratings and replacement or additional circuit breakers.

SEE PANELBOARD INTERIOR FOR CAT. NO.

BOX CAT. NO. BXH34

USE COVER CAT. NO. HOMC30UC

MAINS 200 AMP. MAX.

SEE MAIN OR SERVICE DISCONNECT RATING IF INSTALLED

120/240Vac 1PH. 3W.

TYPE 1 ENCLOSURE

40 CIRCUIT MAX.

LUG TORQUE DATA

SEE CIRCUIT BREAKER AND LUG INSTALLED UNITS FOR WIRE BONDING AND TORQUE.

LINE LUGS	WIRE RANGE	TORQUE
SERVICE GRD. LUG	4 - 250 kcmil	250
	6-2/0	50
BRANCH NEUT. AND EQUIPMENT GRD. BAR	16-10 CU/L 12-10 AL	20
	8 CU / AL	25
	6-4 CU / AL	35
EQUIPMENT GRD. BAR COMBINATIONS	TWO 14 OR 12 CU	25
	TWO 12 OR 10 AL	25

SHORT CIRCUIT CURRENT RATING

MAIN LUGS ONLY

22,000 RMS SYMMETRICAL AMPERES AT 120/240 VOLTS AC MAXIMUM WITH REMOTE MAIN QCM2-VH.

10,000 RMS SYMMETRICAL AMPERES AT 120/240 VOLTS AC MAXIMUM ADDITIONAL OR REPLACEMENT BRANCH CIRCUIT BREAKERS MUST HAVE AN INTERRUPTING RATING EQUAL TO OR GREATER THAN THAT OF THE CIRCUIT BREAKER WITH THE LOWEST INTERRUPTING RATING PRESENTLY INSTALLED.

MAIN BREAKER OR SERVICE DISCONNECT

22,000 RMS SYMMETRICAL AMPERES AT 120/240 VOLTS AC MAXIMUM WITH QCM2-VH MAIN BREAKER INSTALLED, 10,000 RMS SYMMETRICAL AMPERES AT 120/240 VOLTS AC MAXIMUM WITH QCM2 MAIN BREAKER INSTALLED.

UL Underwriters Laboratories Inc.®

ETL LISTED

ELECTRICIAN KIT BOX

ISSUE NO. V-2813

SQUARE D COMPANY

MADE IN U.S.A. 15 40265-258-01

SUITABLE FOR USE WITH 75°C COPPER OR ALUMINUM MAIN CONDUCTORS. SEE BRANCH BREAKERS FOR BRANCH WIRE RATINGS.

SUITABLE FOR USE AS SERVICE EQUIPMENT WHEN SERVICE DISCONNECT (MAIN BREAKER) IS INSTALLED.

REPLACEMENT MAIN BREAKER MUST HAVE AN INTERRUPTING RATING EQUAL TO OR GREATER THAN BREAKER PRESENTLY INSTALLED.

TOTAL CIRCUIT BREAKER HANDLE RATING NOT TO EXCEED 185 AMPERES PER BRANCH CIRCUIT CONNECTOR.

DIAGRAM FOR MAIN BREAKER

MAIN BREAKER TYPE QCM2

LINE

BOX BONDING WHEN HELD

SERVICE GND WHEN NEEDED

DIAGRAM FOR MAIN LUGS

MAIN LUGS KIT NO. QCL225

SEE PANELBOARD INTERIOR FOR BREAKER TYPES.

ONE SINGLE POLE, ONE PLUG ON SPACE.

TWO SINGLE POLES, ONE PLUG ON SPACE OR MAY USE ONE SINGLE POLE. ONE TWO POLE REQUIRES TWO SPACES.

FOR BOX BONDING SEE SECTION 250-23, 24, 25 AND 53 OF THE NEC.

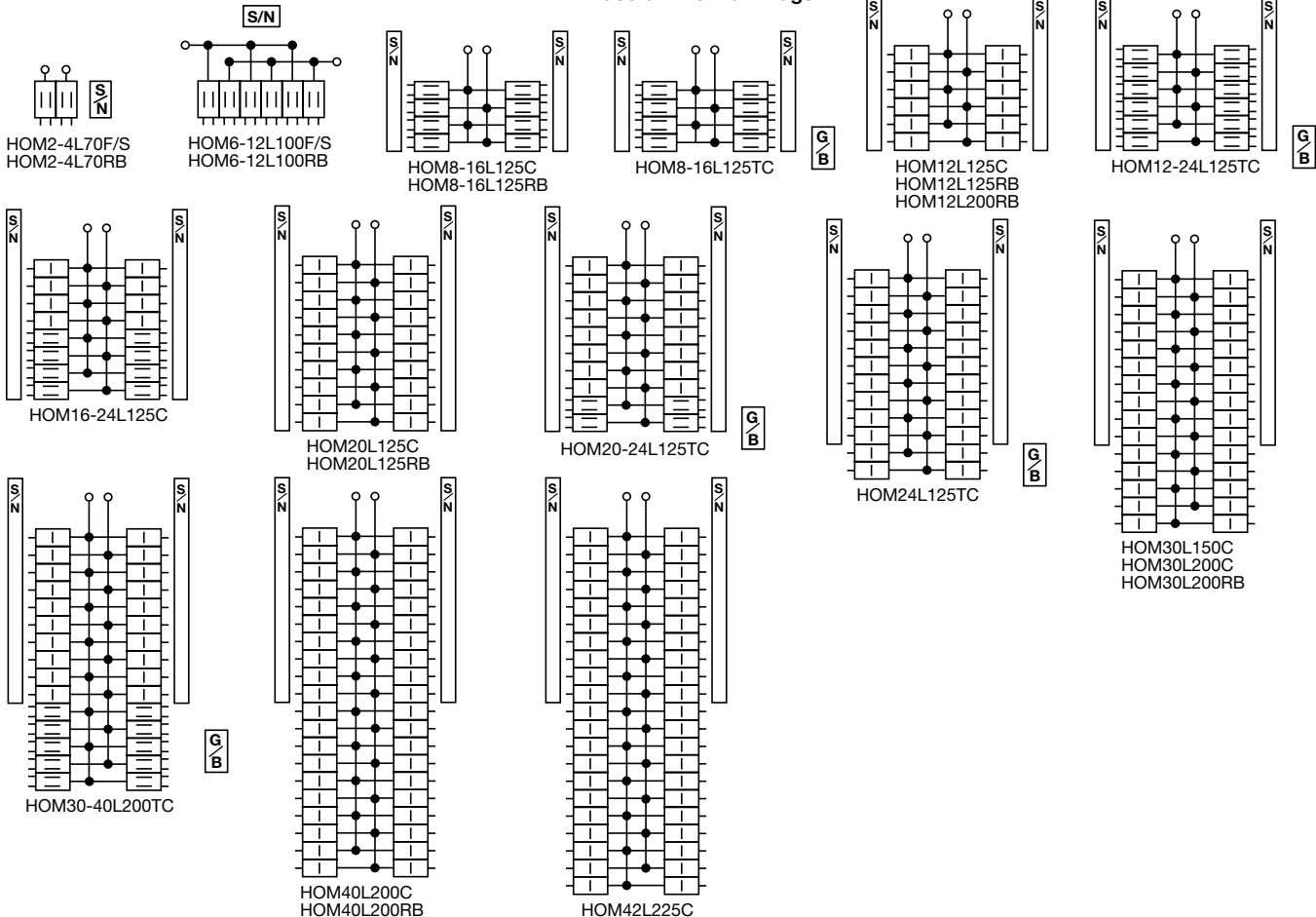
WHEN USED AS SERVICE EQUIPMENT ALL UNUSED NEUTRAL TERMINALS MAY BE USED FOR TERMINATING EQUIPMENT GROUND WIRES.

TORQUE NOTE: WHEN MAIN BREAKER OR MAIN LUGS CONNECTOR MOUNTING NUTS ARE LOOSENED OR REMOVED, RETIGHTEN TO 50 - 75 IN-LBS TORQUE.

SQUARE D COMPANY

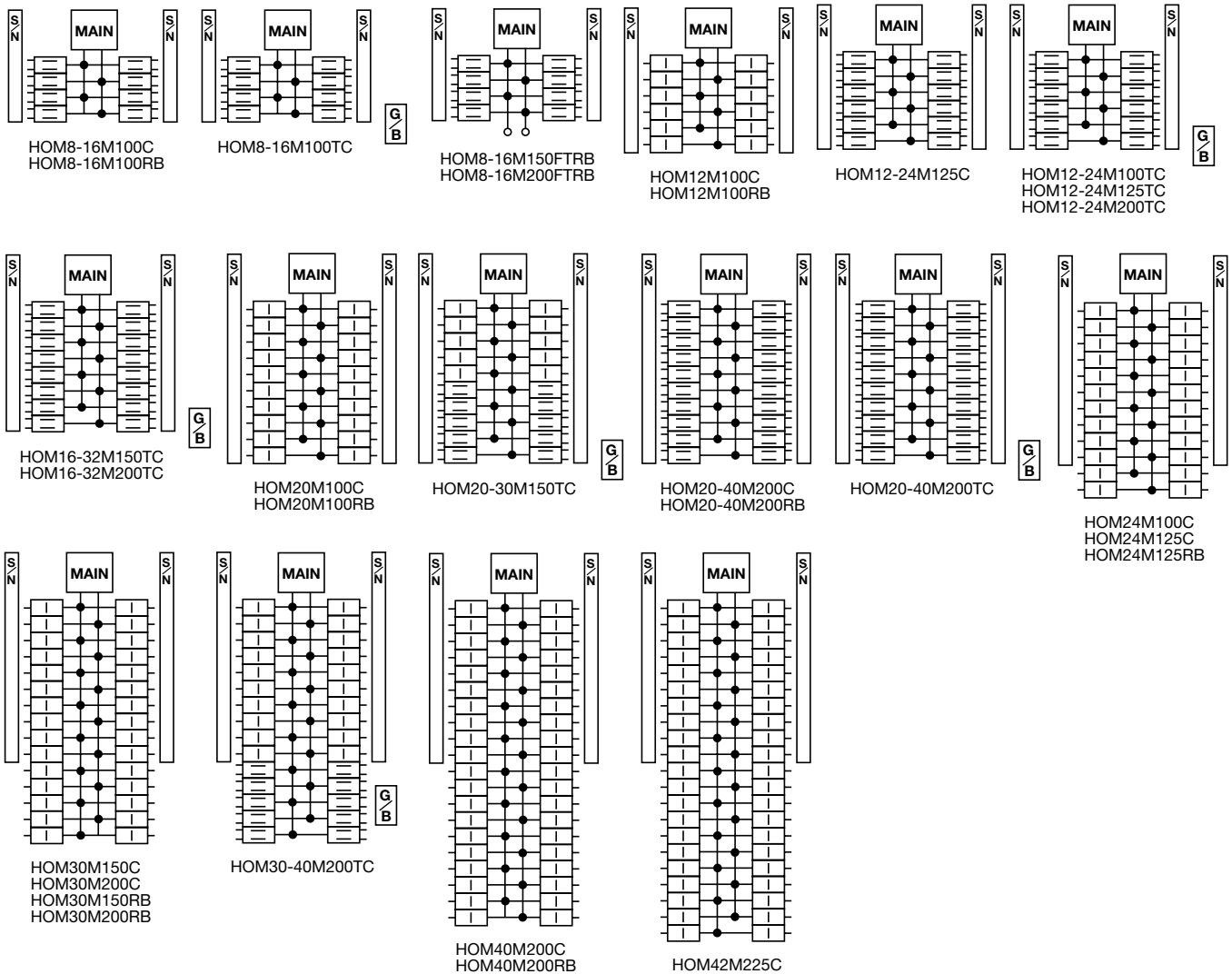
MADE IN U.S.A. 15 40265-247-01

1 Phase 3 Wire Main Lugs



HOMELINE® Circuit Breaker Load Centers Wiring Diagrams

1 Phase 3 Wire Main Breaker



Universal Mains

