

Human/Machine Interface

HMI configuration software

Catalog

July 2014



Vijeo Designer



Intelligent Data Service



Vijeo Design'Air



Vijeo Design'Air Plus

How can you fit a 6000-page catalog in your pocket ?

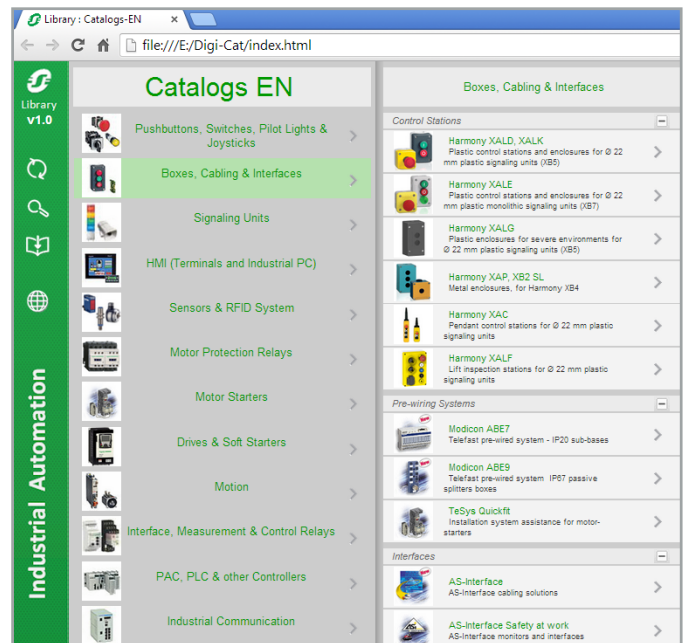
Schneider Electric provides you with the complete set of industrial automation catalogs all on a handy USB key for PC or in an application for tablets



Digi-Cat, a handy USB key for PC



- > Convenient to carry
- > Always up-to-date
- > Environmentally friendly
- > Easy-to-share format



Contact your local representative to get your own Digi-Cat



e-Library, the app for tablets

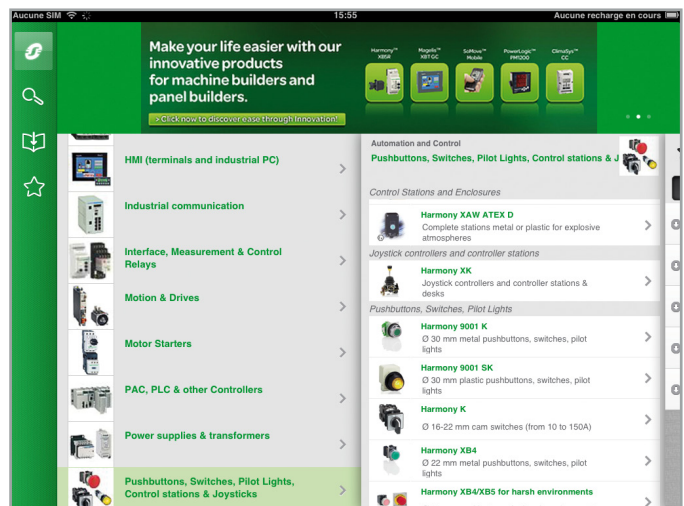
If you have an iPad®:

- > Go to the App Store and search for e-Library
- > or scan the QR code



If you have an Android tablet:

- > Go to the Google Play Store™ and search for eLibrary
- > or scan the QR code



General contents

- Selection guide* *page 2*

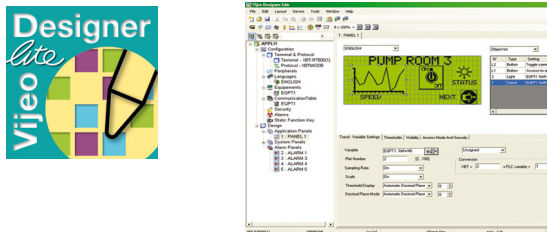
- **Vijeo Designer™ Lite configuration software**
 - Presentation *page 4*
 - References *page 7*

- **Vijeo Designer™ configuration software**
 - Presentation *page 8*
 - References *page 13*

- **Applications for tablets and smartphones**
 - Vijeo Design'Air *page 14*
 - Vijeo Design'Air Plus *page 15*

- **Product reference index** *page 16*

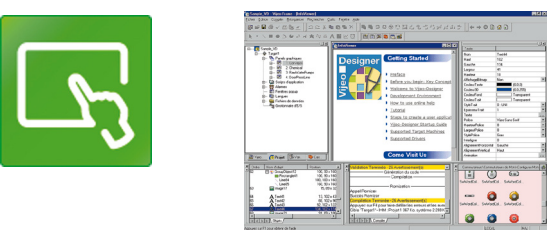
Applications Traditional architecture, HMI executed on PC platform or dedicated terminal Configuration software for operator dialogue applications



Compatible products	Type	Magelis™ XBTN/R/RT Small panels (1)
	Maximum number of targets	1
	Operating system on terminals	Proprietary Magelis
Functions	Reading/writing of PLC variables	Yes
	Display of variables	Yes
	Data processing	–
	Sharing of variables between HMI applications	–
	Saving of variables to external database	–
Internationalization		–
Development of graphic applications	Native library of graphic objects	Yes
	Curves and alarms	Yes (2)
	Scripts	–
Communication between HMI application and PLCs		Via I/O drivers: Schneider Electric or third party protocols (Mitsubishi, Omron, Rockwell Automation, Siemens)
Uploading of applications		Yes
Simulation of HMI applications		Yes
Recipe management		–
Report and barcode printing		–
Screen capture		–
Access security		Linked to user profiles
Interface languages		Screens, online help and documentation in electronic format available in 6 languages: English, French, German, Italian, Simplified Chinese and Spanish
OS compatibility		Windows XP Professional, Windows Vista Business (32-bit), Windows 2000 Professional
Software type		Vijeo Designer™ Lite
Pages		7

(1) All Magelis XBT and Magelis GTO/GTU terminals behave transparently on restoration of power.
(2) Depending on compatible product.
(3) See protocols supported on page 6.
(4) See protocols supported on page 12.

Traditional architecture, HMI executed on PC platform or dedicated terminal Configuration software for operator dialogue applications



Magelis™ STO/STU Small panels Magelis™ XBTGT/GK/GH/GTW/GTO Advanced panels and Magelis™ GTU Universal panels (1) Magelis™ industrial PCs	
32	
Proprietary for Magelis STO/STU, Magelis XBTGT/GK/GH and Magelis GTO/GTU Windows XP embedded for Magelis GTW	
Yes, up to 8000 internal and external variables	
Yes	
Yes, using expression editor or Java programming	
Up to 300 variables between 8 terminals, without router PLC Proprietary protocol above TCP/IP	
Yes, with the Intelligent Data Service extension	
Up to 15 languages supported by 34 western alphabets, 4 Asian alphabets and 2 middle eastern alphabets embedded in the application	
Yes	
Yes, with log	
Java	
Via I/O drivers: Schneider Electric or third party protocols (Mitsubishi, Omron, Rockwell Automation, Siemens)	
Yes	
Yes	
Yes, up to 32 groups, 1024 ingredients for 256 recipes per group, proprietary or CSV format, complete multilingual support for labels and ingredients	
On the fly alarms, log data. Up to 9999 active alarms, record or logs Main barcode types supported: UPC-A, UPC-E, JAN/EAN8, JAN/EAN13, ITF, CODE39, CODE93, CODE128, CODABAR (NW-7)	
Yes, for Magelis XBTGT (XBTGT1105 and higher), Magelis GTO/GTU and Magelis industrial PCs. JPEG format	
Linked to user profiles	
Screens, online help and documentation in electronic format available in 8 languages: English, French, German, Italian, Brazilian Portuguese, Traditional Chinese, Simplified Chinese and Spanish	
Windows XP Professional, Windows 7 Business (32-bit and 64-bit)	
Vijeo Designer™	
13	



Vijeo Designer Lite software

Presentation

Vijeo Designer™ Lite configuration software allows you to create operator dialogue applications for Magelis™ XBTN/R/RT Small Panels for controlling simple automation systems.

For operator dialogue terminals Magelis™ STO/STU Small Panels and Magelis™ GT/GTO/GK/GH/GTW Advanced Panels, refer to the Vijeo Designer configuration software on pages 8 to 10.

Vijeo Designer Lite has been designed with simplicity in mind and is inspired by the same user-friendly philosophy as Vijeo Designer. The primary aim of Vijeo Designer Lite is to show users who have not had any prior training how to create applications. It does this by adopting an intuitive approach to operation and providing advice in the form of wizards.

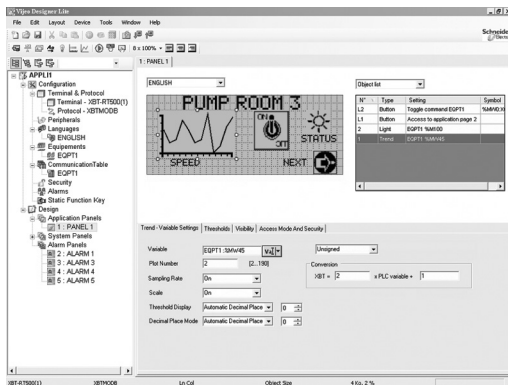
Vijeo Designer Lite is used to design page content in WYSIWYG (*What You See Is What You Get*) format: everything created using this software is displayed in exactly the same way as it appears on the dialogue terminal screen.

Since Vijeo Designer Lite is capable of simultaneously defining, within the same project, as many versions in different languages as the terminal's memory can support, users have the option of internationalizing their applications.

The interface and documentation for Vijeo Designer Lite are available in 6 languages: English, French, German, Italian, Simplified Chinese and Spanish.

Since applications created with Vijeo Designer Lite are independent of the communication protocol used, the same application can be used with the various PLCs offered by the major suppliers.

Vijeo Designer Lite works on compatible PCs with Windows 2000, XP or Vista operating software.



Example project

Configuration

With Vijeo Designer Lite configuration software, operator dialogue applications can be developed quickly and easily using its very simple and user-friendly tools.

The development environment has two main windows:

- Application browser: This is a logical guide to designing applications. All project-related information can be clearly displayed at any time.
- Dialogue view: This displays the contextual information for the selection made in the application browser. This information is arranged on a tab.

Vijeo Designer Lite applications have different types of pages:

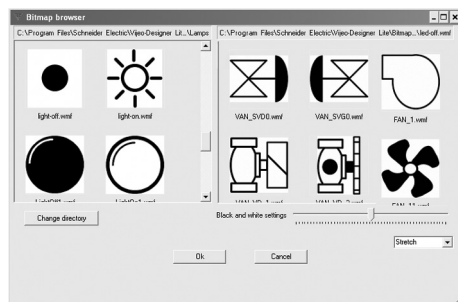
- Application pages, which can be interlinked
- Alarm pages
- Preconfigured system pages

Pages can contain text or bitmaps, as well as all kinds of variables and graphic objects.

Applications can be configured without dialogue boxes. Instead of dialogue boxes, preconfigured lists of parameters are available to help users make their selections and avoid errors.

Vijeo Designer Lite comes with a toolset:

- Graphics editor
- Library of pictograms and symbols
- Editor for linking to PLC variables
- Simulator
- Application printing



Symbols library

Graphics editor

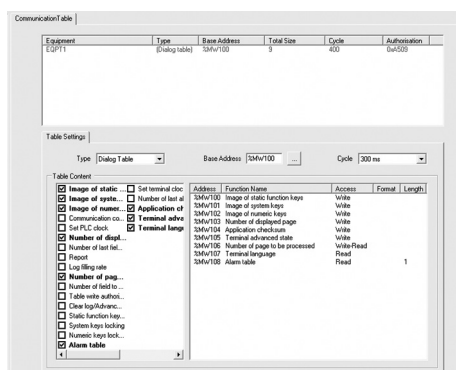
The graphics editor in Vijeo Designer Lite makes it easy for developers of operator dialogue applications to create pages based on objects:

- Point, line, rectangle, ellipse
- Text and image
- Graphic, trending curve, button, light
- Enumerated list and scrolling text

Symbols library

The symbols library makes the process of creating pages more efficient. It contains pictograms which are easily recognizable within industrial contexts as well as drawings of the main components used in automation.

With Vijeo Designer Lite, linking of these graphic symbols to the function keys of the terminal is instantaneous.



Communication table

Links with PLC variables

Vijeo Designer Lite also enables the user to easily link symbols with the internal variables of Schneider Electric PLCs by importing Twido Soft, PL7 and Concept automation database files.

Communication table

The communication table in Vijeo Designer Lite provides the user with an easy way of configuring all data exchanged between the Magelis compact XBT terminal and the main device.

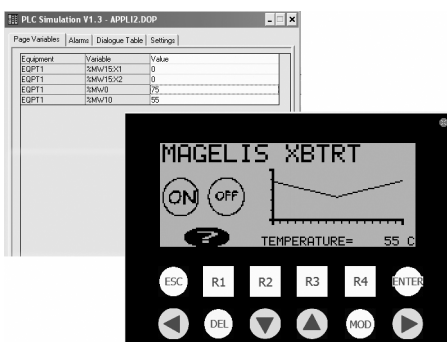
The communication table is also used to define:

- Access to data: read/write
- All the alarm conditions

Simulator

Vijeo Designer Lite makes it possible to simulate the entire operator dialogue application at design office level without using a Magelis compact terminal or a PLC. The simulator program can be used to thoroughly check the following application characteristics:

- Navigation between pages
- Entry of variable data
- Display of variables
- Display of alarms



Simulation

Application printing

You can print all or part of the HMI application using the Vijeo Designer Lite print function. It is possible to send the data to a printer or to print to file.

Protocols for communication between the HMI application and the PLCs

Communication between the operator dialogue application and the connected control equipment is established using a communication protocol (driver), which is selected when creating the application in Vijeo Designer Lite.

Schneider Electric protocols

Vijeo Designer Lite supports the following Schneider Electric protocols:

- Modbus RTU Master/Slave
- Unitelway
- Zelio Logic

Third-party protocols

Vijeo Designer Lite supports the following third-party protocols:

- Mitsubishi:
 - Melsec FX protocol (CPU)
- Omron:
 - Sysmac protocols
- Rockwell Automation:
 - Allen Bradley protocols: DF1-Full Duplex, RS DataHighway 485
- Siemens:
 - Simatic PPI protocols



VJDSUDTMSV13M

References

Licences for the Vijeo Designer Lite configuration software listed below consist of a CD-ROM containing:

- Vijeo Designer Lite V1.3 software
- User documentation in electronic format
- The communication protocols described on page 6
- XBTL1001 development software for converting existing XBT applications

Single-station licences

Description	Licence type	Application transfer cable		Reference	Weight kg
		PC side port	Magelis terminal side		
Vijeo Designer Lite configuration software	Single (1 station)	–	– (1)	VJDSNDTMSV13M	0.125
		USB	Magelis XBTN/R/RT (2)	VJDSUDTMSV13M	0.675

(1) References for application transfer cables (PC to Magelis XBTN/R/RT terminal) are listed under "Connection to PCs and printers" in "Magelis™ XBTN/R/RT" catalog.

(2) USB cable for PC TSXCUSB485 connection and XBT adaptor for USB cable XBTZ925 included (refer to "Magelis™ XBTN/R/RT" catalog).



Vijeo Designer software

Presentation

The cross-platform Vijeo Designer™ configuration software can be used to create operator dialogue applications for controlling automation systems for:

- Magelis™ STO and STU terminals (Vijeo Designer Limited Edition is sufficient)
- Magelis™ GTO terminals
- Magelis™ GTU terminals
- Magelis™ XBTGT and XBTGK terminals
- Magelis™ XBTGH portable terminals
- Magelis™ GTW open terminals
- Magelis™ industrial PCs Panel PC and BOX PC

Note: For semi-graphic terminals Magelis XBTN/R/RT, please refer to the Vijeo Designer Lite development software. **Magelis XBTG terminals are no longer supported.**

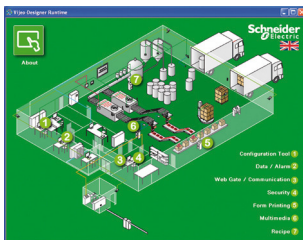
Vijeo Designer and a suitable terminal can be combined to provide a solution for each and every control station requirement, at the cost of a simple software reconfiguration.

Capable of supporting video image streaming, the Magelis Vijeo Designer offer provides access to new types of application. Users can view their process instantly or subject to a delay, on the same screen as the HMI dialogue.

Vijeo Designer uses Magelis Ethernet TCP/IP connectivity and is, therefore, able to support WEB Gate remote access, the sharing of application data between terminals, the transfer of recipes and logs for variables, and much more.

Applications can take on an international nature, because Vijeo Designer supports up to 15 languages simultaneously in one project (40 alphabets are available on the Magelis GT/GTO/GK terminal). The interface and documentation for Vijeo Designer are available in 7 languages: English, French, German, Italian, Brazilian Portuguese, Simplified Chinese and Spanish.

Vijeo Designer is the HMI component of SoMachine. Vijeo Designer will run on any PC with Windows XP Professional or Windows 7. It supports WYSIWYG simulation (1) of the developed application (without the target Magelis GT/GTO/GK/GTW/GTU terminal or Magelis iPC), simulation of the PLC variables (I/O, internal bits and words) and ensures that the application runs in total security on the Magelis GT/GTO/GK/GTW/GTU terminal or Magelis industrial PC.



Example project

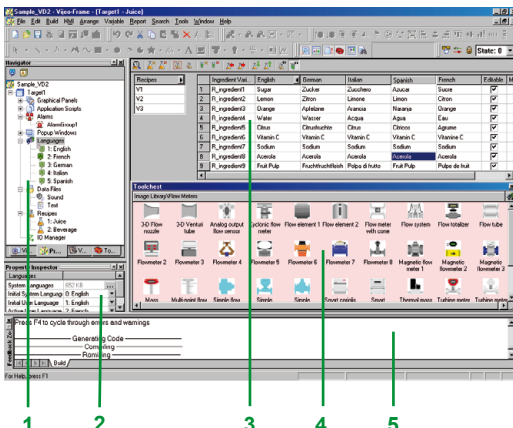
Configuration

Vijeo Designer configuration software enables operator dialogue projects to be processed quickly and easily thanks to its advanced ergonomics using up to 5 configurable windows:

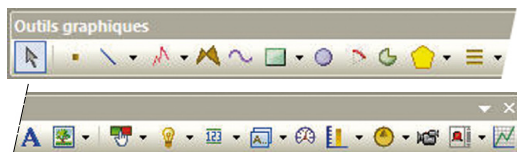
- 1 Browser window
- 2 Object List window
- 3 Recipes window
- 4 Library of Animated Graphic Objects and Image Objects window
- 5 Report window

The software also offers a complete set of application management tools for:

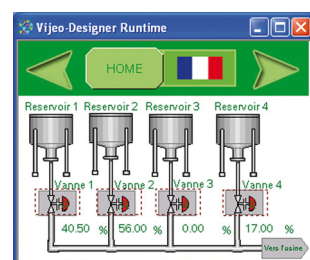
- Project creation, whereby a project comprises one or a number of applications for Magelis GT/GTO/GK/GTW/GTU, Panel PC and PC BOX with sharing of variables between terminals (up to 8 terminals and 300 variables)
- Recipe management (32 groups of 256 recipes with up to 1024 ingredients)
- Cross-referencing of application variables
- Documentation of views for an application
- A full simulation mode for testing the application from the design office
- Bar code reader management via:
 - USB port on multifunction XBTGT terminals, Magelis GT/GTO/GK/GTW/GTU keypad terminals and Magelis industrial PCs
 - COM1 or COM2 serial port on Magelis GT/GK/GTW (2)
- USB keyboard and mouse support for all terminals incorporating a USB port (only one peripheral can be connected at any one time)
- Retrieval of symbol files for PLC variables generated by TwidoSuite, PL7, Concept, ProWORX 32 and Unity Pro software (3)
- Report printing
- Barcode printing



(1) What You See Is What You Get (on the screen of the target terminal).
 (2) Except XBTGT11 terminals.
 (3) DDT structured types and "unlocated" variables are supported.



Graphic toolbar



Object animation example



Library of animated graphic objects

```
//-----
//Script Created: 10 09, 2001
//
// Description:
//
//-----
// Replace this line with your script
int pos;

if (moveBottles.getintValue() != 0) // If conveyor is OFF, do not move bottles
{
    pos = BottlePos.getintValue();
    if (pos >= 1000)
    {
        pos = 0;
        // If bottle position has been the out of display area, reset position.
        pos = pos + 10 + 2 * ConveyorSpeed.getintValue();
        BottlePos.write(pos);
    }
}
```

Java script example

Graphics editor

The graphics editor in Vijeo Designer offers interface consistency for simple objects as well as for more sophisticated ones. It enables application developers to create views easily based on:

- Simple objects to be configured:
 - points, lines, rectangles, ellipses, arcs
 - bar graphs, meters, tanks, fillers, pie charts, curves
 - polylines, polygons, regular polygons, Bézier curves, scales
 - texts, images or alarm summary, etc.
- Preconfigured advanced objects: switches, radio buttons, indicators, buttons, tanks, bar graphs, potentiometers, selector switches, text or number fields, enumerated lists, etc.
- Screen masks and skeletons for type applications

Object animations

8 types of graphic-object animation support the rapid creation of animated mimics on the basis of:

- Pressing the touch panel
- Change of color
- Filling
- Movement
- Rotation
- Size
- Visibility
- Display of associated value

Library of animated graphic objects

The library of animated graphic objects makes the creation of mimics very efficient thanks to the numerous “ready-made” animation objects. It includes more than 4000 2-D and 3-D “industrial” vector images. Simply “drag and drop” the object using the mouse to position it on the mimic being created.

User-defined objects can be added to this library using the same simple “drag and drop” method.

Java scripts

Vijeo Designer supports data processing using Java language scripts. This function facilitates the running of complex animations, the automation of tasks within the terminal and the management of calculations in order to relieve the load on the PLC programs.

The scripts (50 lines, max.) can be associated with:

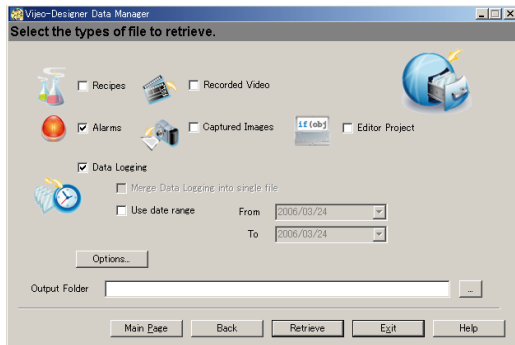
- Variables
- Operator actions
- Screens
- The application itself

User-customizable resources

To enable applications to be customized in accordance with customer requirements, Vijeo Designer features a new resource concept that makes it possible to define styles (colours, images, character fonts, text lists).

To quickly customize a generic application to meet customer requirements, simply assign these styles to the objects concerned.

The resource concept is supported by the following native objects: *Meter*, *Bar Graph*, *Slider*, *Potentiometer*, *Selector*, *Text List* and *Image List*.

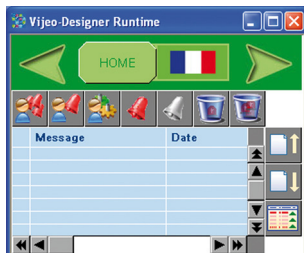


Data Manager: Transfer recipes, videos, images, etc. via Ethernet or USB, by simply clicking the mouse

Advanced functions

Based on new information technologies, Vijeo Designer features a large number of advanced functions for processing a higher volume of data, both faster and more reliably:

- Multimedia data management in the most popular formats:
 - image display (jpeg, bmp, emf and png files)
 - text display and processing (txt files)
 - sound message processing (wav files)
- Alarm or curve logs recorded
- Zoom in/out function on trending curves for a detailed analysis
- Alarm management. All variables can be categorized as "Alarms" and can be customized in respect of visualization and acknowledgment. These Boolean and analogue threshold type alarms can be printed on the fly.
- Multimode application transfer: via serial link, USB, Ethernet and Compact Flash memory card (on multifunction terminals)
- Backup of application source files on the terminal or iPC to facilitate maintenance
- User-friendly data exchange between PC and terminal using the Data Manager tool
- Integrated FTP server for downloading/uploading recipes via Ethernet TCP/IP and restoring logs to Magelis GT/GTO/GK/GTW/GTU and Magelis iPC
- Multiport communication for multifunction terminals, 2 serial links and 1 Ethernet network can be active simultaneously
- Action table for associating a particular behavior with an event
- Use of a USB memory stick (up to 4 GB) for application downloads/uploads, data retrieval or recipe exchange
- E-mail on action and event (the e-mail text can contain up to 1000 characters)



Alarm management

WEB Gate remote connection

Vijeo Designer supports a WEB Gate remote connection with any platform which has an Ethernet connection point.

WEB Gate supports remote visualization of Vijeo Designer applications with Internet Explorer on any PC running Windows XP or Windows 7. The size of the page displayed is determined by the terminal.

WEB Gate supports the display of pages similar to those in the Vijeo Designer application, or of different pages, i.e. startup pages and navigation pages can be differentiated in order to indicate the type of access (terminal/WEB Gate).

Several connections are possible at the same time, with the number depending on the size of the application.

The high security mode of WEB Gate excludes any risk of applications jamming as a result of variables being modified via the terminal and WEB Gate at the same time.

For increased confidentiality:

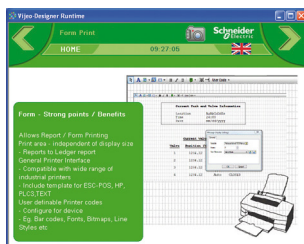
- WEB Gate access can be restricted to only those PCs whose IP address appears in the licensing list.
- Some Vijeo Designer functions are not supported by WEB Gate:
 - application shutdown, restart
 - terminal configuration
 - reading of an acoustic animation (sound file)
 - display a recorded video sequence

WEB Maintenance remote diagnostics

In addition to WEB Gate, Vijeo Designer features the embedded diagnostics service WEB Maintenance - Transparent Ready WEB Server Class B15 (1). This server's navigation bar features an option for accessing the following functions:

- WEB Gate
- Animation tables
- Web interface for retrieving data files (recipes, logs, multimedia files)

Note: Terminals programmed using Vijeo Designer can be accessed directly via their names. This function is supported by the DHCP and DNS network services.



Report printing

(1) Please consult our website www.schneider-electric.com

Integrated diagnostics

Vijeo Designer can be used to access the “Diag buffer” function of Modicon M340/ Premium/Quantum PLCs via the following protocols:

	Modicon M340 Unity Pro	Premium PL7	Premium Unity Pro	Quantum Unity Pro
UNITE-Series				
UNITE-TCP/IP XWAY				
UMAS Modbus TCP				
UMAS Modbus RTU				
UMAS Modbus Plus				
UMAS UNITE-Series				
UMAS UNITE-TCP/IP XWAY				
UMAS Modbus TCP USB PPP				

Accessible
Not accessible

Intelligent Data Service option

Intelligent Data Service (IDS) is an extension of Vijeo Designer for the target PC (Magelis or standard PC) which supports the implementation of control solutions for one or a number of terminals (up to 8).

This extension offers full process traceability. Both process variables and operator actions are tracked so that the right decisions can be made at the right time (*Industrial Business Intelligence*).

Powerful

The IDS extension enables data to be collected from multiple terminals via Ethernet without impairing HMI reaction times.

Flexible

The IDS extension supports various storage methods; CSV files can be read directly in MS Excel, saving as free format in an SQL database or secure IDV (*Intelligent Data Vault*) files to ensure compatibility with the requirements of 21 CFR Part 11.

Innovative

In just a few clicks of the mouse, the IDS extension allows you to create dashboards that can be accessed from any WEB browser (Silverlight) as well as clear and well organized reporting documents.

Intelligent Data Service Report Printing option

Intelligent Data Service (IDS) Report Printing is an extension of Intelligent Data Service for the PC (Magelis or Standard PC).

This extension allows you to create new reports “from scratch” and link them to IDS data.

In addition to editing functions, IDS Report Printing allows you to preview the report before printing, print it or save it to file on disk.



Communication protocols between the HMI application and the PLCs

Communication between the operator dialogue application and the connected control equipment is established using a communication protocol (driver), which is selected when creating the application in Vijeo Designer.

Schneider Electric protocols

Vijeo Designer supports the following Schneider Electric protocols:

- Modbus RTU Master
- Modbus TCP/IP Master
- Modbus Plus (1)
- Modbus 32-bit extensions
- ELAU PacDrive (ELAU C00x/LMCx00)
- Unitelway
- UniTE TCP/IP
- USB terminal port for Modicon M340 CPUs
- FIPIO (2), FIPWAY (2)

All Schneider Electric drivers provide IEC access to input bits/words and output bits/words: Modbus (RTU and TCP/IP), Modbus Plus (GMU and USB), Uni-Telway, Xway.

Direct I/O access authorizes access to the hardware input and output registers.

Register addresses comply with the syntax of IEC standards and the address rules for UNITY configuration software (%I, %IW, %Q, %QW).

If requested by the user, the variables associated with a PLC can be read (*"on demand scan"* function). The DDT and unlocated variables of Unity Pro are supported.

Third-party protocols

Vijeo Designer supports the following third-party protocols:

Emerson

ROC Plus (SIO) and ROC Plus TCP/IP protocols.

Mitsubishi

Melsec protocols: A/Q CPU (SIO), A/Q Ethernet (TCP), QnU Ethernet (TCP), A/Q Link (SIO), QnA CPU (SIO), Q Ethernet (UDP), QnU Ethernet (UDP), FX (CPU), QUTE for Q00JCPU.

Except for Melsec-A Link (SIO) protocol, Mitsubishi serial link protocols do not work on the RJ45 port (1).

Omron

Sysmac protocols: FINS (SIO), LINK (SIO), FINS (Ethernet) and Trajexia.

OMRON serial link protocols do not work on the RJ45 port (3).

Rockwell Automation

Allen-Bradley protocols: DF1-Full Duplex, RS DataHighway 485, Ethernet IP (4) (PLC5, SLC500, MicroLogix, ControlLogix), Ethernet IP native (3) (ControlLogix), Ethernet IP High Speed access, DeviceNet Slave (6), Ethernet IP Explicit.

Siemens

Simatic protocols: MPI (S7-300/400), MPI Direct, RK512/3964R (S7-300/400), PPI, Siemens Ethernet (ISO-on-TCP/Profinet), MPI pass-through function.

The S7-300/400 MPI Adapter and RK512/3964R - RS485 connection serial link protocols do not work on the RJ45 port (3).

Profibus DP protocol (5).

Toyoda

Toyopuc Ethernet PC3J (TCP/IP) and Toyopuc Link (SIO) protocols.

Migration of XBTL 1000 applications

The **Switch2VijeoDesigner** service offer makes it even easier to migrate XBTL 1000 applications created on XBTF terminals to Vijeo Designer applications for use on XBTGT/GK terminals. For further information on this service offer, please consult your Customer Care Centre.

(1) Via USB Modbus Plus gateways: **XBZGUMP** for Magelis XBTGT2●●● and higher, **TSXCUSMBBP** for Smart and Compact iPC.

(2) Via USB FIPIO gateway **TSXCUSBFIP**.

(3) They are supported on XBTGT (SUB-D connector, XBTGT2 and higher).

(4) Certified ODVA compatibility.

(5) Via Profibus DP Bus expansion card **XBZGPD**. Certified by Profibus Foundation.

(6) Via Device Net Bus expansion card **XBZGDVN**.

Note: For more information on connection of Magelis terminals to field buses, please refer to "Magelis™ GT/GTO/GK/GH/GTW/GTU" catalog



VJDSUDTGAV62M

References

All licences for the Vijeo Designer configuration software listed below consist of a DVD containing:

- Vijeo Designer software, including:
 - Copyright-free stand-alone installation of Data Manager
- User documentation in electronic format, including:
 - Online help for the software
 - User Manual for the supported targets
 - Setup Manual for the different protocols supported
- A multimedia self-learning tool lasting 1 hour 30 minutes in English/French
- The supported communication protocols

Note: Magelis STO/STU terminals can be programmed using Vijeo Designer Limited Edition. Vijeo Designer V6.2 supports applications created with any version of Vijeo Designer ≥ V4.6.

If you are updating an earlier application, please consult your Schneider Electric Customer Care Centre.

Single-station Build Time licences

Description	Licence type	Application transfer cable		Reference	Weight kg
		PC side	Magelis terminal side		
Vijeo Designer configuration software	Single (1 station)	–	– (1)	VJDSNDTGSV62M	0.125
		USB	Magelis STO/STU Magelis GT/GTO/GK/GH/ GTW/GTU Magelis industrial PCs (2)	VJDSUDTGAV62M	0.330

Multi-station Build Time licences

Description	Licence type	Number of stations	Reference	Weight
Vijeo Designer configuration software	Group	3	VJDGNDTGSV62M	0.125
	Team	10	VJDTNDTGSV62M	0.125
	Facility	Unlimited number of stations on one site	VJDFNDTGSV62M	0.125

Run Time licences (3)

Description	Licence type	Number of stations	Reference	Weight
Vijeo Designer Run Time licence for Magelis GTW & iPC	Single	1	VJDSNRTPC	–
Intelligent Data Service licence extension for Vijeo Designer Run Time	Single	1	VJDSNTRCKV62M	–
Intelligent Data Service Report Printing for IDS	Single	1	VJDSNTRPRV62M	–
Vijeo Designer Run Time IDS Report Print pack (4)	Single	1	VJDSNTRPKV62M	–

(1) References for application transfer cables (PC to Magelis GT/GTO/GK/GH/GTW/GTU terminal) are listed under "Application transfer cables - terminal to PC" in "Magelis™ GT/GTO/GK/GH/GTW/GTU" catalog.

(2) USB cable for PC connection included, for Magelis XBT2●●● and higher: **XBTZG935** (refer to "Magelis™ GT/GTO/GK/GH/GTW/GTU" catalog).

(3) The Run Time licence drives the execution of an application. It is only used for Magelis industrial PCs and Magelis GTW terminals.

(4) Pack of 3 licences: Vijeo Designer Run Time licence for Magelis iPC, Intelligent Data Service licence extension and Intelligent Data Service Report Printing licence extension.



Vijeo Design'Air

Presentation

Vijeo Design'Air is an application for Android and iOS tablets and smartphones. They enable you to connect remotely to an HMI terminal over a WiFi network and display a graphical view of the same on your tablet and smartphone.

During the design phase, you can set the HMI terminal to be detected by Vijeo Design'Air. The HMI's accessibility level can be configured to provide view only mode or full control and also secured by requiring user authentication for login.

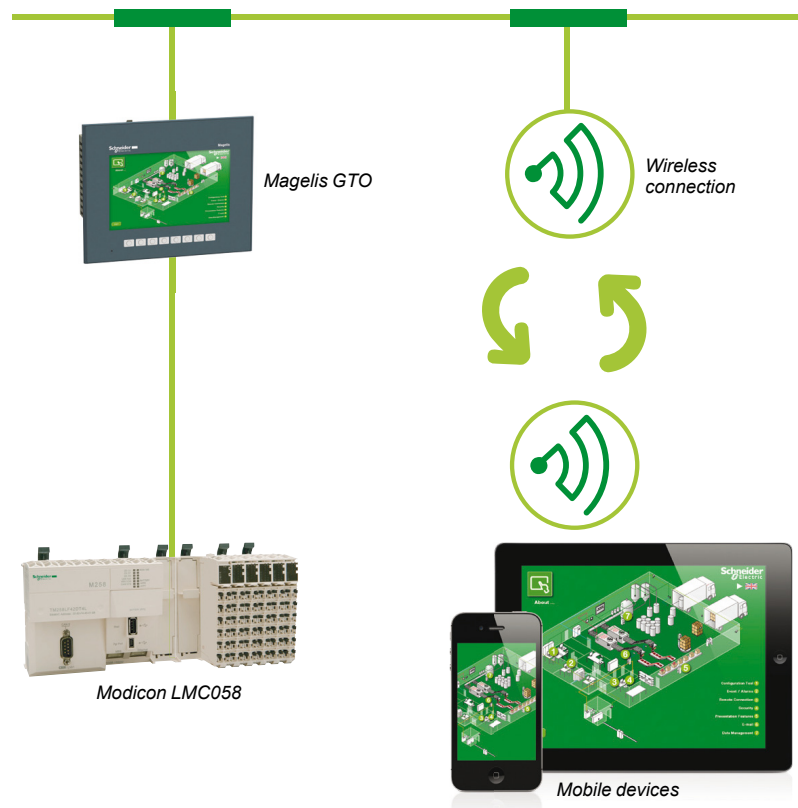
Vijeo Design'Air supports the following features:

- HMI Auto-detect: scans and detects available HMI terminals on a nearby network.
- Remote monitoring: connects tablets and smartphones to HMI terminals, and allows remote viewing and controlling of HMI projects at run time.
- Advanced screen: takes advantage of advanced graphic and multi-touch capabilities of tablets and smartphones and applies it to the automation industry.

Architecture

In this configuration, the HMI terminal acts as the server, while the tablet or smartphone acts as the client. The server and client communicate over a WiFi wireless, 3G, 4G, or LTE network.

After connection is established, you can use some of the functionalities of tablets and smartphones to remotely interact with the HMI terminal. For example, you can perform touch or swipe actions to start or stop a process or to navigate between screens. You can also use pinch action to zoom in and out of a screen for better viewing.



Vijeo Design'Air compatible HMI terminals

Below is the list of Magelis HMIs that are compatible with Vijeo Design'Air:

- Magelis™ STO and STU terminals
- Magelis™ GTO and GTU terminals
- Magelis™ XBTGT and XBTGK terminals
- Magelis™ XBTGH portable terminals
- Magelis™ SCU
- Magelis™ industrial Panel PCs and BOX PCs

Note: Download Vijeo Design'Air from Google Play or App Store in iTunes.



Vijeo Design'Air Plus

Presentation

Vijeo Design'Air Plus is an application for Android and iOS tablets and smartphones which enables you to create a tablet/smartphone project specifically for the tablet/smartphone display size. At runtime, an operator can access the user application to display data and control automation processes on the tablet/smartphone.

The Vijeo Designer's drawing tools can be used to create and edit a visual representation of the automation process. You can draw shapes and parts (such as rectangles, arcs, and pies), Toolchest parts (such as numeric displays, switches, and bar graphs), use the gradient feature to enhance the color of the drawn objects, and set up an Alarm Panel for remote alarm monitoring.

Vijeo Design'Air Plus supports the following features:

- HMI project design: enables the HMI designer to create a tablet/smartphone project of the automation process using enhanced drawing tools.
- Remote access and control: enables an operator to control automation processes, provide the ability to view and monitor data, change variable values, and monitor and acknowledge alarms.
- Enhanced data display: takes advantage of the advanced graphic and multi-touch capabilities of tablets and smartphones and applies them to automation industry.

Architecture

Vijeo Design'Air Plus allows the operators to select a user application, and on successful login downloads and launches the tablet/smartphone application. The operator can view and monitor an automation process, and for example, change values in numeric displays and string displays. In the Alarm Panel, the operator can monitor and acknowledge alarms.



Vijeo Design'Air Plus compatible HMI terminals

Below is the list of Magelis HMIs that are compatible with Vijeo Design'Air Plus:

- Magelis™ STO and STU terminals
- Magelis™ GTO and GTU terminals
- Magelis™ XBTGT and XBTGK terminals
- Magelis™ XBTGH portable terminals
- Magelis™ industrial Panel PCs and BOX PCs

Note: Download Vijeo Design'Air Plus from Google Play or App Store in iTunes.

V	
VJDFNDTGSV62M	13
VJDGNDTGSV62M	13
VJDSNDTGSV62M	13
VJDSNDTMSV13M	7
VJDSNRTMPC	13
VJDSNTRCKV62M	13
VJDSNTRPKV62M	13
VJDSNTRPRV62M	13
VJDSUDTGAV62M	13
VJDSUDTMSV13M	7
VJDTNDTGSV62M	13

Schneider Electric Industries SAS

Head Office
35, rue Joseph Monier
F-92500 Rueil-Malmaison
France

www.schneider-electric.com

The information provided in this documentation contains general descriptions and/or technical characteristics of the performance of the products contained herein. This documentation is not intended as a substitute for and is not to be used for determining suitability or reliability of these products for specific user applications. It is the duty of any such user or integrator to perform the appropriate and complete risk analysis, evaluation and testing of the products with respect to the relevant specific application or use thereof. Neither Schneider Electric nor any of its affiliates or subsidiaries shall be responsible or liable for misuse of the information contained herein.

Design: Schneider Electric
Photos: Schneider Electric

DIA5ED2130614EN

July 2014-V2.0