



FOR VANDAL-RESISTANT ACTIVATION OF EMERGENCY SYSTEMS

- “Evacuation” and “Emergency” stations available
- Quick reset
- Cover with alarm discourages tampering
- ADA Compliant
- UL and cUL Listed and CSFM Approved

Push Button Stations

Model PS Series

These multi-purpose, initiating devices cover a wide range of industrial and commercial applications. The Federal Signal push-button stations function like a traditional fire alarm “pull station”, providing a simple contact closure to activate emergency equipment, audible and visual signals and alarm panels.

The push button stations are available in two colors — Red or Yellow. The red “Emergency” and yellow “Evacuation” units have a “Push and Turn” reset button.

Each unit is available with or without a tamper-resistant polycarbonate cover. Covered units work to protect against physical damage to the station and to prevent false alarms without restricting use in emergency situations. When the cover is lifted to gain access to the alarm, a piercing tone sounds, calling immediate attention to the area. The piezo horn is quiet once the cover is closed. Power to the piezo alarm is provided by a 9VDC battery (included). The sounder cover mounts easily over the station with four anchor screws.

The terminal block provides easy installation and maintenance. Units mount on existing single-gang electrical boxes or 4" x 4" electrical boxes with plaster ring adapters (customer supplied).

Units are UL and cUL Listed, meeting Type 3R specifications for outdoor use with the cover and gasket (gasket not included). They are also ADA Compliant (requiring less than five foot pounds for activation).

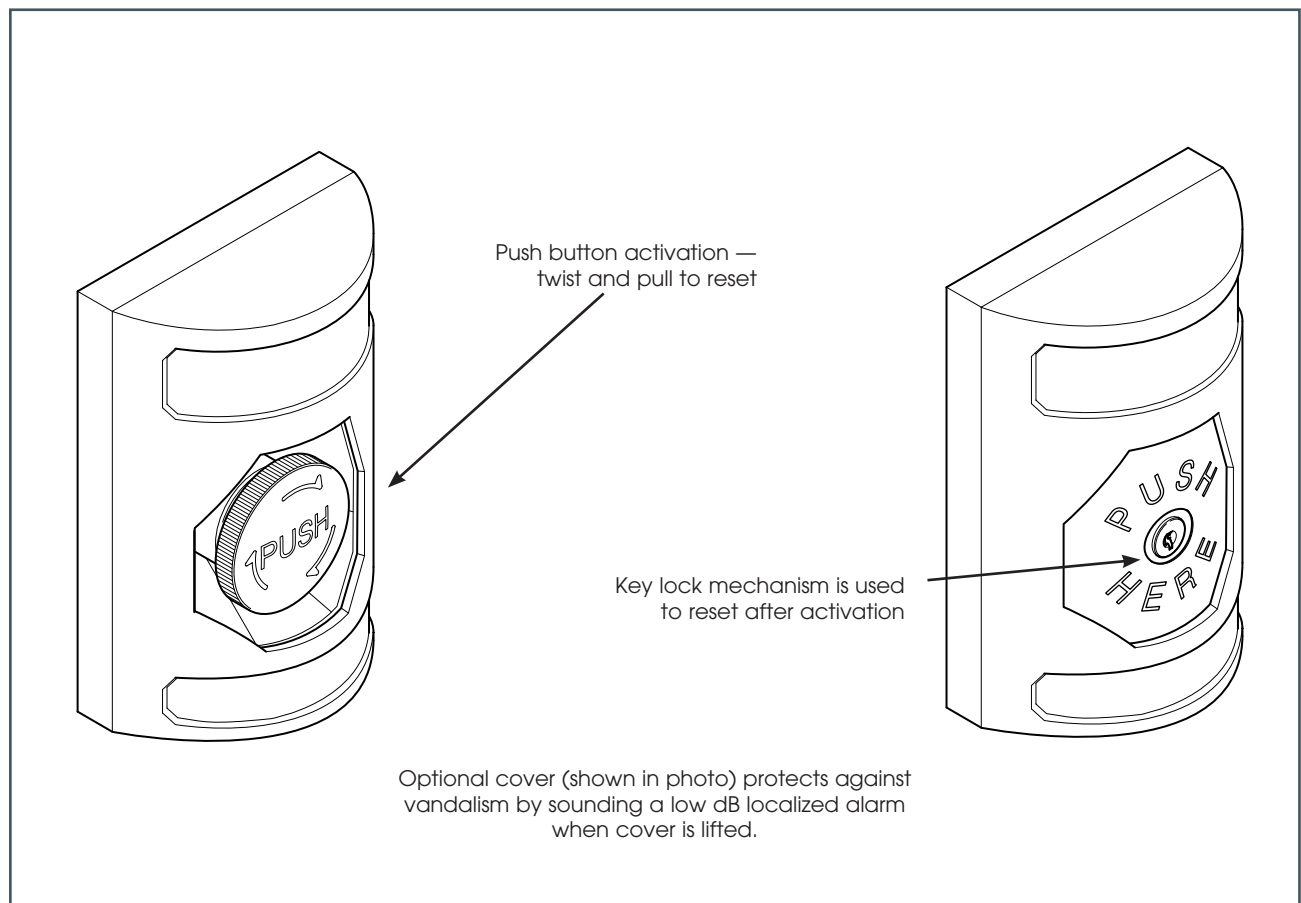
Contact ratings for the Push Button Stations are 600VAC @ 3 amps and 250VDC @ 1 amp.

MODEL	DESCRIPTION
PUSH BUTTON STATION (Shown At Top)	
PSEV-Y	Yellow Station with Push & Turn Reset Button — “EVACUATION”
PSEM-R	Red Station with Push & Turn Reset Button — “EMERGENCY”
PUSH BUTTON STATION WITH SOUNDER COVER (Shown At Bottom)	
PSEVSC-Y	Yellow Station with Push & Turn Reset Button & Sounder Cover — “EVACUATION”
PSEMSC-R	Red Station with Push & Turn Reset Button & Sounder Cover — “EMERGENCY”

Note: Other colors and text available upon request.



PUSH BUTTON STATIONS (PS SERIES)



SPECIFICATIONS

Net Weight:	3.3 lbs.	1.5 kg
Shipping Weight:	4.2 lbs.	5.94 kg
Height		
without Cover:	4.9"	124.5 mm
with Cover:	8.4"	213.4 mm
Width		
without Cover:	3.25"	82.6 mm
with Cover:	5.5"	139.7 mm
Depth		
without Cover:	2.0"	50.8 mm
with Cover:	2.4"	61.0 mm

HOW TO ORDER

- Specify model number
- Please refer to Model Number Index PS beginning on page 377

ACCESSORIES

<u>Description</u>	<u>Part Number</u>
Cover Only, Evacuation, Yellow	PSCE-Y
Cover Only, Emergency, Red	PSCE-R
Contact, normally open	K229277A
Contact, normally closed	K229277A-01



TWO-STEP OPERATION PREVENTS ACCIDENTAL ACTIVATION

- Available in 120VAC
- Highly visible red enclosure
- Lift cover and pull down ring to activate
- Approved for Class I, Division 1 explosion-proof applications
- UL and ULC Listed, CSFM Approved and CSA Certified

Explosion-Proof Fire Alarm Pull Station

Model MPEX

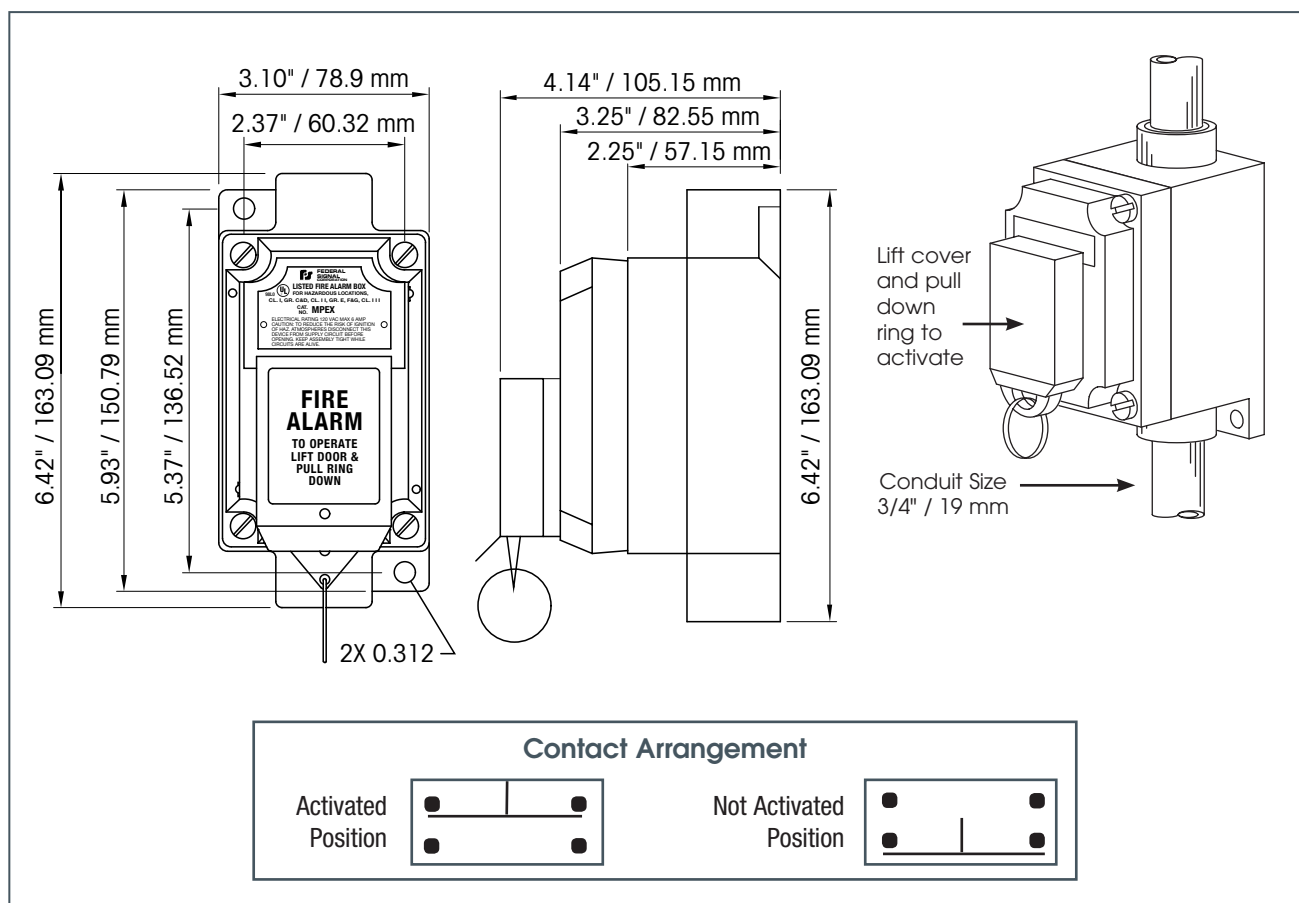
The Model MPEX Explosion-Proof Pull Station is designed for harsh environments. The unit is rated for Class I, Division 1, Groups C & D; Class II, Division 1, Groups E, F and G; and Class III. MPEX is rated NEMA 7 for Groups C & D and NEMA 9 for Groups E, F and G.

The Model MPEX Explosion-Proof Pull Station is designed for hazardous locations where flammable gases, vapors, combustible dusts or easily ignitable fibers are present. The unique swing-up front cover exposes a pull-down ring which activates the alarm; this two-step process prevents accidental activation. The MPEX is reset by depressing the shaft and returning the plate to its original position. Contacts on the unit are rated 120VAC, 60Hz at six amps continuous.

The enclosure is made of copper-free cast aluminum alloy. Installation is made easy via the feed through $\frac{3}{4}$ " conduit openings found on either end of the MPEX. It is painted bright red for high visibility and has clearly marked operating instructions on the face plate.



EXPLOSION-PROOF PULL STATION (MPEX)



SPECIFICATIONS

Net Weight:	2.4 lbs.	1.09 kg
Shipping Weight:	2.7 lbs.	1.23 kg
Height:	6.4"	16.26 cm
Width:	3.1"	7.87 cm
Depth:	4.1"	10.41 cm

HOW TO ORDER

- Specify model number
- Please refer to Model Number Index MPEX beginning on page 377



ATEX Call Point-Break Glass

Model WCP-BG

FEATURES:

- Zone 1, 2, 21 and 22 hazardous area approved
- Works as a control for fire and gas alarm systems
- Manufactured from corrosion proof, marine grade, copper free LM6 aluminum
- Certified to ATEX and IECEx Standards

Model WCP-BG break glass manual call points are approved for Zone 1, 2, 21 and 22 hazardous areas for the control of fire and gas alarm systems. Available with and without monitoring resistors all versions are certified to ATEX and IECEx standards.

The WCP-BG features enclosures manufactured from corrosion proof, marine grade, copper free LM6 (A413) aluminium which is phosphated and powder coated.

APPROVALS:

- ATEX certificate: Sira10ATEX3103X
- IECEx certificate: IECEx SIR 10.0047X

EN 60079-0:2006/IEC 60079-0:2007
 EN 60079-1:2004/IEC 60079-1:2003
 EN 60079-7:2007/IEC 60079-7:2006
 EN 60079-18:2004/IEC 60079-18:2006

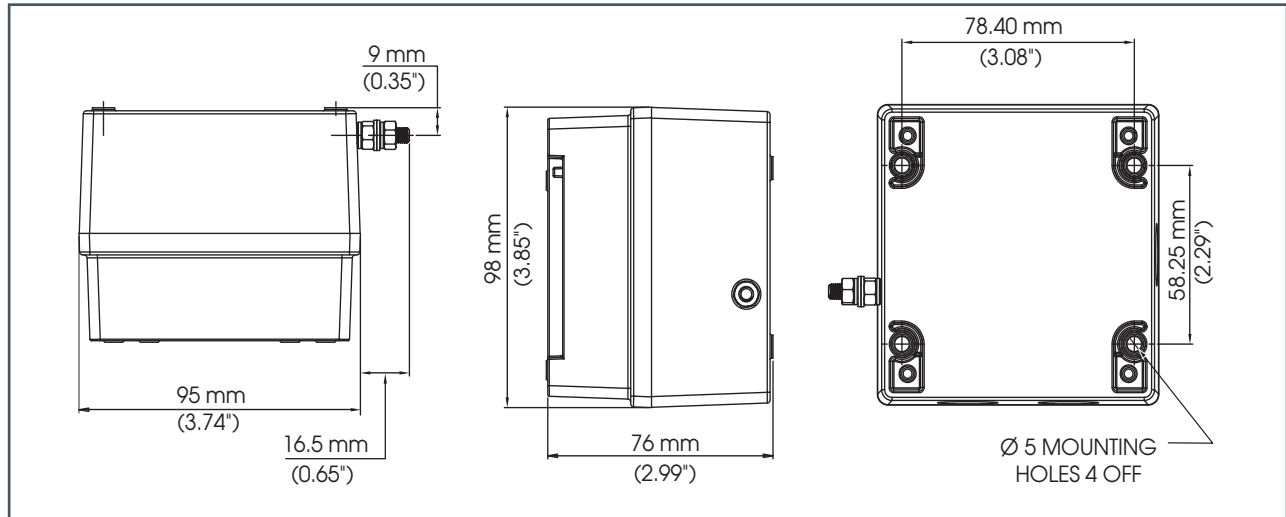
EN 61241-0:2006/IEC 61241-0:2004
 EN 61241-1:2004/IEC 61241-1:2004



Model:	Category:	Voltage:	Switch Rating:			Monitoring Resistors:	Terminals:	Cable Entries:	Weight:
WCP-BG	II 2G Ex e d IIC T6 Gb II 2D Ex tb IIIC T60°C Db IP66 Ta = -40°C to +55°C	250V ac Max.	5.0A Max.			N	6 x 4mm²	2 x M20 Top/Bottom 1 x M20 Left/Right	0.8Kg
		50V dc Max.	1.0A Max.						
WCP-BG-XXX*	II 2G Ex e d mb IIC T4 Gb II 2D Ex tb IIIC T75°C Db IP66 Ta = -40°C to +50°C	56V dc Max. Rating: <50V: 1.0A >50V: 0.75A	Nominal Voltage:	Maximum Voltage:	Min. EOL / Series Value:	Y	6 x 4mm² or 8 x 2.5mm² DIN rail	2 x M20 Top/Bottom 1 x M20 Left/Right	0.8Kg
			48V	56V	1K8				
			24V	28V	470R				
			12V	15V	120R				
			6V	9V	47R				

*XXX is a placeholder for end-of-line and/or series resistor that must be included at time of order.

ATEX CALL POINT BREAK GLASS (WCP-BG)



SPECIFICATIONS

WCP-BG:	II 2G Ex e d IIC T6 Gb II 2D Ex t IIIC T60°C Db IP66	Cable entries:	2 x M20 clearance top and 1 x M20 clearance side. Back box can be rotated to give 2 x bottom and 1 x side entries.
WCP-BG-XXX:	II 2G Ex e d mb IIC T4 Gb II 2D Ex t IIIC T75°C Db IP66	Stopping plugs:	2 x Exe nylon plugs as standard Brass and stainless steel plugs optional
Ambient:	Ta = -40°C to +55°C (+50°C for WCP-BG-XXX)	Terminals:	6 x 4.0mm ² cables
Housing material:	Marine grade copper free LM6 Aluminium	Product Weight:	0.8 kg.
Ingress protection:	IP66	Shipping Weight:	0.9 kg
Housing finish:	Phosphated & powder coated finish: anti- corrosion.	Optional DIN rail terminal blocks:	8 x 2.5mm
Color:	RAL3000 Red (others available on request)	Optional duty label:	Metalized polyester

SERVICE PARTS

<u>Description</u>	<u>Part Number</u>
Replacement Glass (10pk)	KGL4076215
Test Key	KAKSA07

HOW TO ORDER

Standard Model

MODEL	TYPE
WCP-BG ATEX Call Point Break Glass	S - Standard Terminal SF - Standard w/Lift Flap SL - Standard Duty Label SFL - Standard w/Lift Flap and Duty Label

Resistor Model

MODEL	TYPE		
WCP-BG ATEX Call Point Break Glass	D - DIN Rail Terminal DF - DIN Rail w/Lift Flap DL - DIN Rail Duty Label DFL - DIN Rail w/Lift Flap and Duty Label	Specify End-of- the-Line Resistor*	Specify Series Resistor*



ATEX Call Point-Push Button

Model WCP-PB

Model WCP-PB push button manual call points are approved for Zone 1, 2, 21 and 22 hazardous areas for the control of fire and gas alarm systems. Available with and without monitoring resistors all versions are certified to ATEX and IECEx standards.

FEATURES:

- Zone 1, 2, 21 and 22 hazardous area approved
- Works as a control for fire and gas alarm systems
- Spring loaded cover protects push button
- Requires two-action activation
- User resettable
- Manufactured from corrosion proof, marine grade, copper free LM6 aluminum
- Certified to ATEX and IECEx Standards

The push button mechanism is protected by a spring loaded cover therefore the switch requires a two-action activation. The product is user resettable by rotating the push button.

The WCP-PB range features enclosures manufactured from corrosion proof, marine grade, copper free LM6 (A413) aluminium which is phosphated and powder coated.

APPROVALS:

- ATEX certificate: Sira10ATEX3103X
- IECEx certificate: IECEx SIR 10.0047X

EN 60079-0:2006/IEC 60079-0:2007
 EN 60079-1:2004/IEC 60079-1:2003
 EN 60079-7:2007/IEC 60079-7:2006
 EN 60079-18:2004/IEC 60079-18:2006

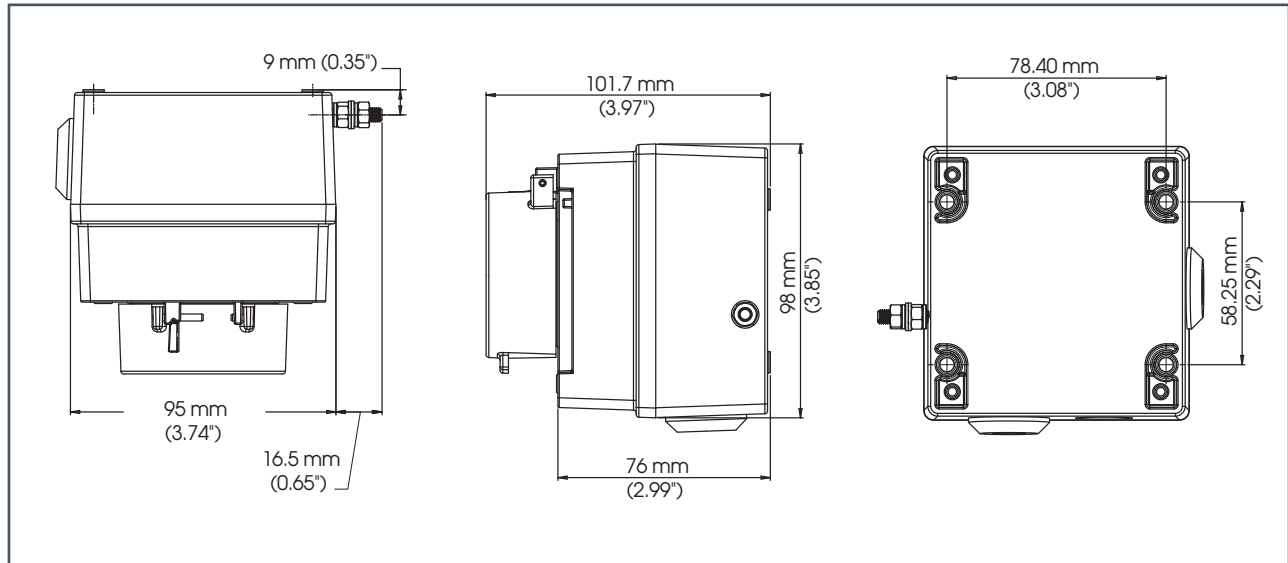
EN 61241-0:2006/IEC 61241-0:2004
 EN 61241-1:2004/IEC 61241-1:2004



Model:	Category:	Voltage:	Switch Rating:			Monitoring Resistors:	Terminals:	Cable Entries:	Weight:
WCP-PB	II 2G Ex e d IIC T6 Gb II 2D Ex tb IIIC T60°C Db IP66 Ta = -40°C to +55°C	250V ac Max.	5.0A Max.			N	6 x 4mm²	2 x M20 Top/Bottom 1 x M20 Left/Right	0.8Kg
		50V dc Max.	1.0A Max.						
WCP-PB-XXX*	II 2G Ex e d mb IIC T4 Gb II 2D Ex tb IIIC T75°C Db IP66 Ta = -40°C to +50°C	56V dc Max. Rating: <50V: 1.0A >50V: 0.75A	Nominal Voltage:	Maximum Voltage:	Min. EOL / Series Value:	Y	6 x 4mm² or 8 x 2.5mm² DIN rail	2 x M20 Top/Bottom 1 x M20 Left/Right	0.8Kg
			48V 24V 12V 6V	56V 28V 15V 9V	1K8 470R 120R 47R				

*XXX is a placeholder for end-of-line and/or series resistor that must be included at time of order.

ATEX CALL POINT PUSH BUTTON (WCP-PB)



SPECIFICATIONS

WCP-PB:	II 2G Ex e d IIC T6 Gb II 2D Ex t IIIC T60°C Db IP66	Cable entries:	2 x M20 clearance top and 1 x M20 clearance side. Back box can be rotated to give 2 x bottom and 1 x side entries.
WCP-PB-XXX:	II 2G Ex e d m b IIC T4 Gb II 2D Ex t IIIC T75°C Db IP66	Stopping plugs:	2 x Exe nylon plugs as standard Brass and stainless steel plugs optional
Ambient:	Ta = -40°C to +55°C (+50°C for WCP-BG-XXX)	Terminals:	6 x 4.0mm ² cables
Housing material:	Marine grade copper free LM6 Aluminium	Weight:	0.8 kg.
Ingress protection:	IP66	Optional DIN rail terminal blocks:	8 x 2.5mm
Housing finish:	Phosphated & powder coated finish: anti-corrosion.	Optional duty label:	Metalized polyester
Color:	RAL3000 Red (others available on request)		

HOW TO ORDER

Standard Model

WCP-PB - S	
MODEL	TYPE
WCP-PB ATEX Call Point Push Button	S - Standard Terminal SL - Standard Duty Label D - DIN Rail DL - DIN Rail w/ Duty Label

Resistor Model

WCP-PB - S - - -			
MODEL	TYPE		
WCP-PB ATEX Call Point Push Button	S - Standard Terminal SL - Standard Duty Label D - DIN Rail DL - DIN Rail w/ Duty Label	Specify End-of- the-Line Resistor*	Specify Series Resistor*

*End-of-line and/or series resistor that must be included at time of order.



ATEX Call Point- Tool Reset

Model WCP-TR

Model WCP-TR push button, tool resettable manual call points are approved for Zone 1, 2, 21 and 22 hazardous areas for the control of fire and gas alarm systems. Available with and without monitoring resistors all versions are certified to ATEX and IECEx standards.

The push button mechanism is protected by a spring loaded cover therefore the switch requires a two-action activation. The push button is user resettable via the use of the special key supplied with the unit.

The WCP-TR features enclosures manufactured from corrosion proof, marine grade, copper free LM6 (A413) aluminium which is phosphated and powder coated.

FEATURES:

- Zone 1, 2, 21 and 22 hazardous area approved
- Works as a control for fire and gas alarm systems
- Spring loaded cover protects push button
- Requires two-action activation
- Manufactured from corrosion proof, marine grade, copper free LM6 aluminum
- Certified to ATEX and IECEx Standards

APPROVALS:

- ATEX certificate: Sira10ATEX3103X
- IECEx certificate: IECEx SIR 10.0047X

EN 60079-0:2006/IEC 60079-0:2007
 EN 60079-1:2004/IEC 60079-1:2003
 EN 60079-7:2007/IEC 60079-7:2006
 EN 60079-18:2004/IEC 60079-18:2006

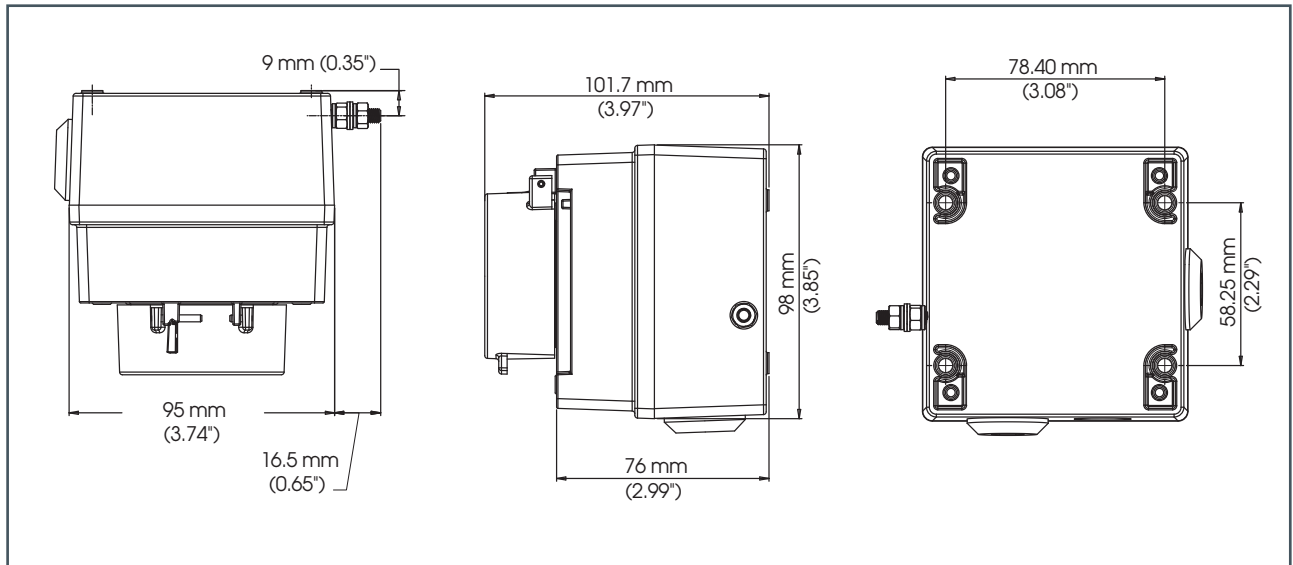
EN 61241-0:2006/IEC 61241-0:2004
 EN 61241-1:2004/IEC 61241-1:2004
 EN 61241-1:2004/IEC 61241-1:2004



Model:	Category:	Voltage:	Switch Rating:			Monitoring Resistors:	Terminals:	Cable Entries:	Weight:
WCP-TR	II 2G Ex e d IIC T6 Gb II 2D Ex tb IIIC T60°C Db IP66 Ta = -40°C to +55°C	250V ac Max.	5.0A Max.			N	6 x 4mm²	2 x M20 Top/Bottom 1 x M20 Left/Right	0.8Kg
		50V dc Max.	1.0A Max.						
WCP-TR-XXX*	II 2G Ex e d mb IIC T4 Gb II 2D Ex tb IIIC T75°C Db IP66 Ta = -40°C to +50°C	56V dc Max. Rating: <50V: 1.0A >50V: 0.75A	Nominal Voltage:	Maximum Voltage:	Min. EOL / Series Value:	Y	6 x 4mm² or 8 x 2.5mm² DIN rail	2 x M20 Top/Bottom 1 x M20 Left/Right	0.8Kg
			48V	56V	1K8				
			24V	28V	470R				
			12V	15V	120R				
			6V	9V	47R				

*XXX is a placeholder for end-of-line and/or series resistor that must be included at time of order.

ATEX CALL POINT TOOL RESET (WCP-TR)



SPECIFICATIONS

WCP-TR:	II 2G Ex e d IIC T6 Gb II 2D Ex tb IIIC T60°C Db IP66	Stopping plugs:	2 x Exe nylon plugs as standard Brass and stainless steel plugs optional
WCP-TR-XXX:	II 2G Ex e d mb IIC T4 Gb II 2D Ex tb IIIC T75°C Db IP66	Terminals:	6 x 4.0mm ² cables
Ambient:	Ta = -40°C to +55°C (+50°C for WCP-TR-XXX)	Weight:	0.8 kg
Housing material:	Marine grade copper free LM6 Aluminium	Optional DIN rail terminal blocks:	8 x 2.5mm
Ingress protection:	IP66	Optional duty label:	Metalized polyester
Housing finish:	Phosphated & powder coated finish: anti-corrosion.		
Color:	RAL3000 Red (others available on request)		
Cable entries:	2 x M20 clearance top and 1 x M20 clearance side. Back box can be rotated to give 2 x bottom and 1 x side entries.		

REPLACEMENT PARTS

<u>Description</u>	<u>Part Number</u>
Tool Reset	KAK15095001

HOW TO ORDER

Standard Model

MODEL	TYPE
WCP-TR ATEX Call Point Tool Reset	S - Standard Terminal SL - Standard Duty Label D - DIN Rail DL - DIN Rail w/ Duty Label

Resistor Model

MODEL	TYPE		
WCP-TR ATEX Call Point Tool Reset	S - Standard Terminal SL - Standard Duty Label D - DIN Rail DL - DIN Rail w/ Duty Label	Specify End-of-the-Line Resistor*	Specify Series Resistor*

259366A Rev A

*End-of-line and/or series resistor that must be included at time of order.