

Labeling Machines



Improve Labeling Speed and Accuracy

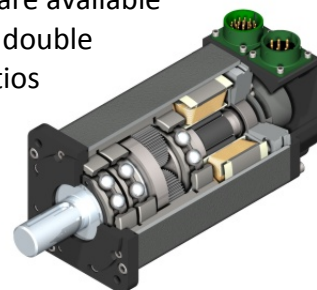
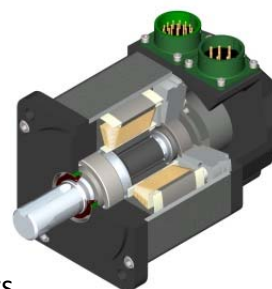
For high speed labeling applications that require accurate and high response motion, the SLM and SLG Series rotary motors from Exlar provide the perfect solution. Where space is at a premium, their footprint is smaller than any other motor offering the same torque.

The integrated gear reducer in the SLG Series offers a higher stiffness and lower inertia than bolt-on gear reducers. These features allow for quicker acceleration and shorter settling times resulting in higher throughput on your packaging machine.

Exlar can configure the SLM and SLG Series to operate with nearly any servo drive on the market. This means you can have the advantage of the compact design and high performance of the SLM and SLG, while using the servo drive of your choice.

Exlar Products:

Exlar's compact motors and gear-motors provide high torque in a very small package. Motors offer continuous torques up to 612 lbf-in and speeds to 5000 rpm. Gearmotors are available in single and double reduction ratios of 4:1, 5:1, 10:1, 16:1, 20:1, 25:1, 40:1, 50:1, and 100:1.



Optimize your application with Exlar products!
Call us at 952-500-6200 or email info@exlar.com to discuss your application. For full product information visit www.exlar.com.