



MACRON DYNAMICS, INC.

www.macrondynamics.com

LINEAR ROBOTICS

AUTOMATION COMPONENTS

MOTION ACCESSORIES

ABOUT MACRON

Macron Dynamics, Inc. is a manufacturer of linear robotic systems and mechanical motion components, providing automation solutions for applications found around the globe.

For more than 25 years, Macron has refined each component and every product through time-tested installations and experience. Macron products are built with the highest quality materials, assembled in the USA, and engineered to withstand the abuses of rigorous, daily usage. The result is a combination of versatility, positioning repeatability, durability, and virtually maintenance-free operation.

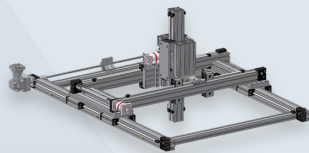
The trademarks of a Macron automation system include long travel capabilities, smooth, fast and repeatable belt driven motion, easy configuration, and extreme high quality.

LINEAR ROBOTICS

Motion so versatile, you won't believe it's linear. Available in 2 and 3 axis designs, Macron linear robotic systems are built to meet the specifications of any time, space, or size necessary to your unique application.



X/Z HD Robot



X/Y/Z Robot



H-Bot



T-Bot

Our gantry and cartesian systems are available standard or configured to meet your specs. Motor mounting flexibility, cable management solutions, and plug and play functionality are just a few added bonuses to our proven experience in belt and screw driven technology.

www.macrondynamics.com

Courtesy of Steven Engineering, Inc. - (800) 258-9200 - sales@steveneng.com - www.stevenengineering.com



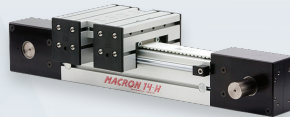
AUTOMATION COMPONENTS

Belt Driven Actuators

Perfect for high-speed, heavy load applications, our aluminum belt driven actuator line is corrosion resistant, and designed with T-slots for easy mounting and a one-piece stress-proof shafted pulley.



MSA-PSC



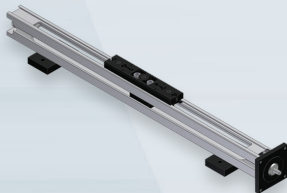
MSA-14H



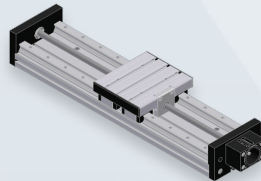
MSA-14S

Screw Driven Actuators

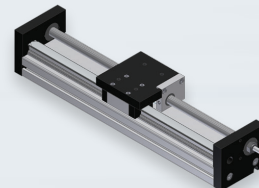
Simple and economical, our screw driven actuators are highly modifiable for different applications, and perfect for lightweight functionality.



MSA-PSS



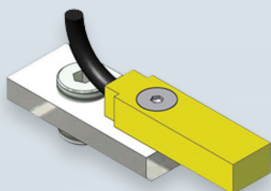
MSA-DRT



MSA-SRT

MOTION ACCESSORIES

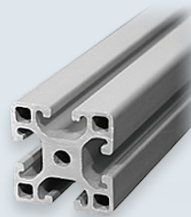
Macron Dynamics offers standard motion accessories to bring your automation system full circle and running at it's best. All MacSTANDARD belt-driven actuators come equipped with corresponding gearboxes and t-slot sensors, configured to your specifications.



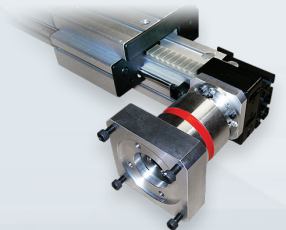
T-SLOT SENSOR



TENSIONING TOOLS



MAC-FRAME



GEARBOXES