

### Safety Chuck

**CSB25P, CSB25F, CSB50P, CSB50F,  
CSB75P, CSB75F, CSB125P, CSB125F  
CSB150P, CSB150F, CSB175P, CSB175F**

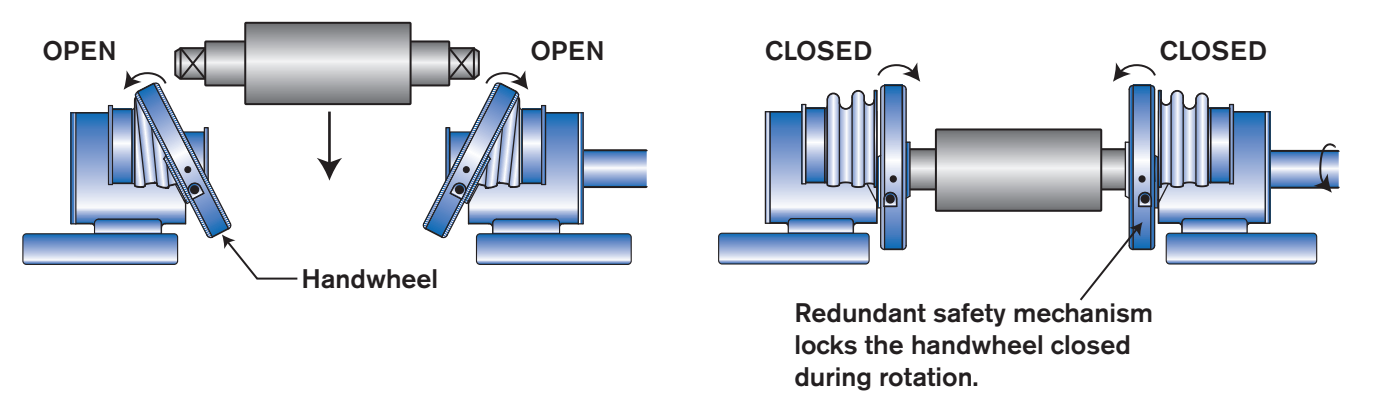
Nexen's line of rugged safety chucks provide roll shaft support and torque transmission at a low cost. The maintenance-free design ensures optimal performance throughout the life of each safety chuck. Nexen's units safe-guard your equipment by securing the roll shaft in place during any wind or unwind operation. Our safety chucks will only open with the socket in the upright position.

Available for either foot or flange mounting, these safety chucks complement Nexen's dependable line of tension control brakes, clutches and electronic tension control systems, offering you a complete package with seamless installation and operation.



- Redundant safety mechanisms securely lock shaft in place
- Long, maintenance-free life
  - Durable construction
  - Cast iron housing
  - Chrome plated, steel handwheel
  - Shaft socket hardened to Rockwell 56C
- Available in ready-to-assemble brake packages
- Manual unlock for most models
- Free turning precision ball bearings
- Finger guards on all models
- Shaft extensions with keyway
- Foot or flange mounting
- Metric size sockets available upon request

Nexen's easy to use safety chucks increase productivity by allowing for quick roll changes. Simply push the handwheel open to insert or remove a roll, then push closed to secure the roll in place. These quick couplings are an essential part of any web operation, adding ease and safety to your process with minimal cost and no maintenance required.



## Safety Chuck Application Guide

### General Information

|                       |           |  |             |
|-----------------------|-----------|--|-------------|
| Web Velocity          | Mpm [fpm] | Roll Weight  | Kg [lbs]    |
| Maximum Roll Diameter | mm [inch] | Total Tension of Material (tissue, paper, plastic, etc.) | N [lbs]     |
| Minimum Roll Diameter | mm [inch] | Maximum Torque Transmitted                               | Nm [in-lbs] |
| Roll Width            | mm [inch] |  |             |

### Air Shaft Information

|                                |  |
|--------------------------------|--|
| Shaft Manufacturer             | Shaft Type (lug, ledges, leaf)                 |
| Shaft End Type (square, other) | Shaft Material (steel, aluminum, carbon fiber) |
| Shaft End Size mm [inch]       | Shaft Weight Kg [lbs]                          |

The following data is required to select a safety chuck: maximum rpm, maximum roll weight, maximum torque, and socket size.

Machine Velocity Mpm [fpm]

0.00314 [0.262] x Minimum Roll Diameter mm [inch]

=

Maximum rpm

Maximum Roll Weight Kg [lbs] + Air Shaft Weight Kg [lbs]

=

Maximum Weight Roll and Shaft

Total Tension N [lbs] x Maximum Roll Diameter mm [inch]

2000 [2]

=

Maximum Torque Nm [in-lb]

Square Socket Size

=

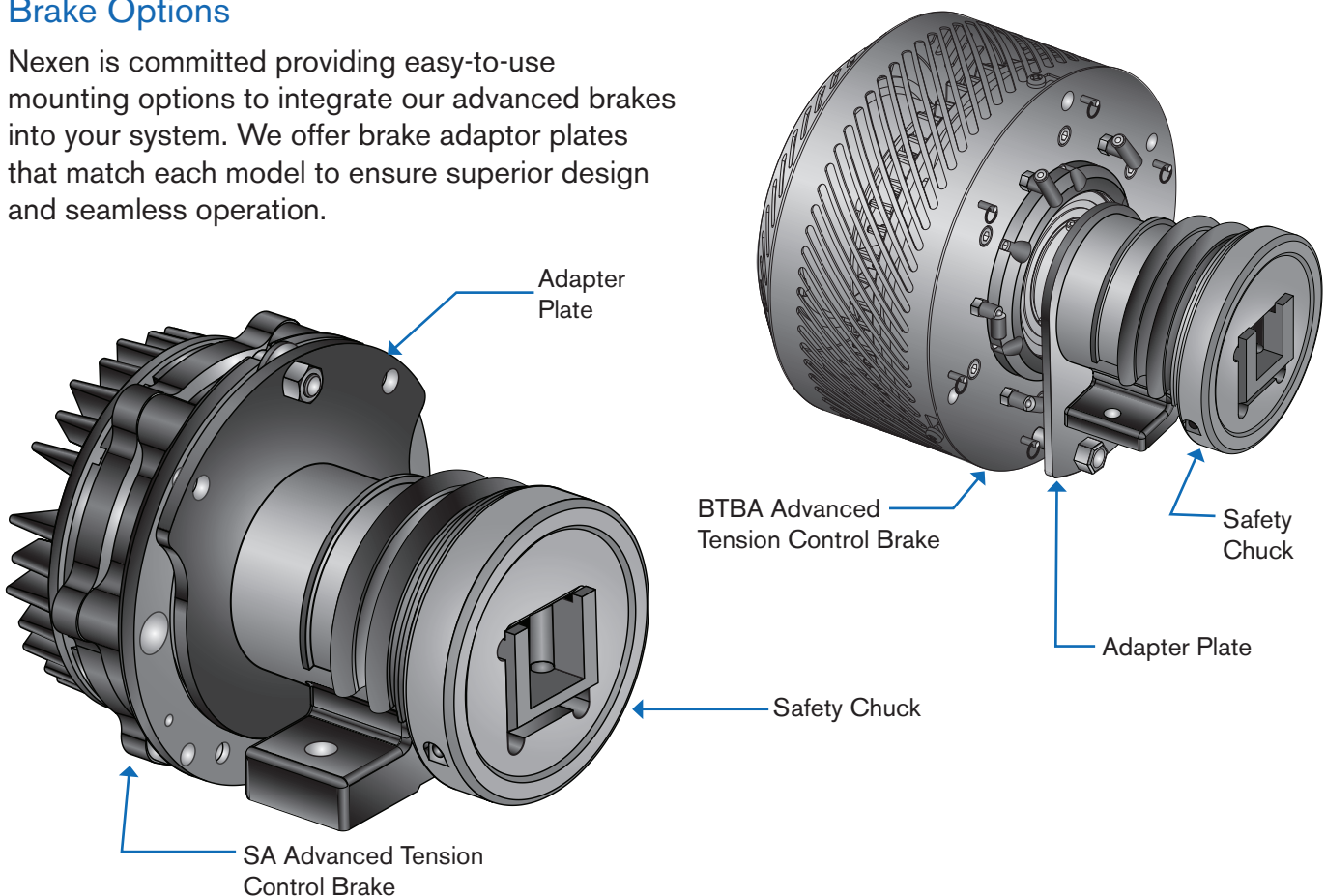
mm [inch]

## Safety Chuck Specifications

| Type                   | Model                   | Socket Type | Max Socket Size | Stocked Socket Size | Stocked Shaft Length | Safety Button | Maximum Weight per Pair | Max RPM | Max Torque           | Shipping Weight        |
|------------------------|-------------------------|-------------|-----------------|---------------------|----------------------|---------------|-------------------------|---------|----------------------|------------------------|
| Light Duty Tilt Plate  | CSB25 (foot or flange)  | U [square]  | 30 mm [1.25 in] | 1.00 in             | 114.4 mm [4.50 in]   | no            | 430 kg [950 lbs]        | 1300    | 122 Nm [90 ft-lb]    | Foot: 5 kg [12 lbs]    |
|                        |                         |             |                 | 1.25 in             |                      |               |                         |         |                      | Flange: 5 kg [10 lbs]  |
| Medium Duty Tilt Plate | CSB50 (foot or flange)  | U [square]  | 30 mm [1.25 in] | 1.00 in             | 127.1 [5.00 in]      | no            | 839 kg [1850 lbs]       | 1300    | 176 Nm [130 ft-lb]   | Foot: 8 kg [16 lbs]    |
|                        |                         |             |                 | 1.25 in             |                      |               |                         |         |                      | Flange: 7 kg [15 lbs]  |
|                        | CSB75 (foot or flange)  | U [square]  | 50 mm [2.00 in] | 1.25 in             | 142.9 mm [5.63 in]   | yes           | 1633 kg [3600 lbs]      | 1300    | 339 Nm [250 ft-lb]   | Foot: 14 kg [30 lbs]   |
|                        |                         |             |                 | 1.50 in             |                      |               |                         |         |                      | Flange: 13 kg [29 lbs] |
|                        | CSB125 (foot or flange) | V [square]  | 40 mm [1.50 in] | 1.25 in             | 142.9 mm [5.63 in]   | yes           | 1360 kg [3000 lbs]      | 1000    | 287 Nm [212 ft-lb]   | Foot: 14 kg [31 lbs]   |
|                        |                         |             |                 | 1.50 in             |                      |               |                         |         |                      | Flange: 14 kg [30 lbs] |
| Heavy Duty Tilt Plate  | CSB150 (foot or flange) | U [square]  | 50 mm [2.00 in] | 1.25 in             | 143.0 mm [5.63 in]   | yes           | 3300 kg [7275 lbs]      | 2000    | 1300 Nm [959 ft-lb]  | Contact Factory        |
|                        |                         |             |                 | 1.50 in             |                      |               |                         |         |                      |                        |
|                        |                         |             |                 | 2.00 in             |                      |               |                         |         |                      |                        |
|                        | CSB175 (foot or flange) | U [square]  | 80 mm [3.15 in] | 2.00 in             | 143.0 mm [5.63 in]   | yes           | 8400 kg [18500 lbs]     | 2000    | 2800 Nm [2065 ft-lb] | Contact Factory        |
|                        |                         |             |                 | 3.00 in             |                      |               |                         |         |                      |                        |

## Brake Options

Nexen is committed providing easy-to-use mounting options to integrate our advanced brakes into your system. We offer brake adaptor plates that match each model to ensure superior design and seamless operation.



**For proper brake selection, please consult the Nexen Product Catalog and the following selection table.**

## Safety Chucks Designed for Nexen Brakes with Adapter Kits

**NOTE:** For brakes and adapters to be used with CSB150 and CSB175 Safety Chucks, please consult the factory.

| Safety Chuck Model                | Socket Size | Socket Type   | Shaft Diameter         | Safety Button Location | Safety Chuck Part Number | Compatible Brake(s)* | Adaptor Kit Part Number |           |        |
|-----------------------------------|-------------|---------------|------------------------|------------------------|--------------------------|----------------------|-------------------------|-----------|--------|
| CSB25P<br>(P= Foot Mount)<br>□■   | 1.000 in    | U<br>(square) | 28.56 mm<br>[1.125 in] | N/A                    | 970128                   | T&S-450A             | 960758                  |           |        |
|                                   | 1.250 in    |               |                        |                        | 970130                   |                      |                         |           |        |
|                                   | 1.000 in    |               |                        |                        | 970129                   | T&S-600A             | 960759                  |           |        |
|                                   | 1.250 in    |               |                        |                        | 970131                   |                      |                         |           |        |
| CSB25F<br>(F= Flange Mount)<br>□■ | 1.000 in    | U<br>(square) | 28.56 mm<br>[1.125 in] | N/A                    | 970124                   | T&S-450A             | Contact Nexen           |           |        |
|                                   | 1.250 in    |               |                        |                        | 970126                   |                      |                         |           |        |
|                                   | 1.000 in    |               |                        |                        | 970125                   | T&S-600A             | Contact Nexen           |           |        |
|                                   | 1.250 in    |               |                        |                        | 970127                   |                      |                         |           |        |
| CSB50P<br>(P= Foot Mount)<br>□■   | 1.000 in    | U<br>(square) | 31.75 mm<br>[1.250 in] | N/A                    | 970136                   | T&S-600A             | 960759                  |           |        |
|                                   | 1.250 in    |               |                        |                        | 970138                   |                      |                         |           |        |
|                                   | 1.000 in    |               |                        |                        | 970137                   | T&S-800A             | 960760                  |           |        |
|                                   | 1.250 in    |               |                        |                        | 970139                   |                      |                         |           |        |
| CSB50F<br>(F= Flange Mount)<br>□■ | 1.000 in    | U<br>(square) | 31.75 mm<br>[1.250 in] | N/A                    | 970132                   | T&S-600A             | Contact Nexen           |           |        |
|                                   | 1.250 in    |               |                        |                        | 970134                   |                      |                         |           |        |
|                                   | 1.000 in    |               |                        |                        | 970133                   | T&S-800A             | Contact Nexen           |           |        |
|                                   | 1.250 in    |               |                        |                        | 970135                   |                      |                         |           |        |
| CSB75P<br>(P= Foot Mount)<br>◆❖   | 1.250 in    | U<br>(square) | 34.93 mm<br>[1.375 in] | left side              | 970152                   | T&S-800A             | 960761                  |           |        |
|                                   |             |               |                        | right side             | 970153                   |                      |                         |           |        |
|                                   | 1.500 in    |               |                        | left side              | 970158                   |                      |                         | T&S-1000A | 960762 |
|                                   |             |               |                        | right side             | 970159                   |                      |                         |           |        |
|                                   | 1.250 in    |               |                        | left side              | 970154                   | T&S-1000A            | 960762                  |           |        |
|                                   |             |               |                        | right side             | 970155                   |                      |                         |           |        |
|                                   | 1.500 in    |               |                        | left side              | 970160                   |                      |                         | T&S-1000A | 960762 |
|                                   |             |               |                        | right side             | 970161                   |                      |                         |           |        |
|                                   | 1.250 in    |               |                        | left side              | 970156                   | BTBA-10              | 960763                  |           |        |
|                                   |             |               |                        | right side             | 970157                   |                      |                         |           |        |
|                                   | 1.500 in    |               |                        | left side              | 970162                   |                      |                         | BTBA-10   | 960763 |
|                                   |             |               |                        | right side             | 970163                   |                      |                         |           |        |
|                                   | 1.250 in    |               |                        | left side              | 960726                   | BTBA-12              | 960764                  |           |        |
|                                   |             |               |                        | right side             | 960728                   |                      |                         |           |        |
|                                   | 1.500 in    |               |                        | left side              | 960734                   |                      |                         | BTBA-12   | 960764 |
|                                   |             |               |                        | right side             | 960736                   |                      |                         |           |        |
| CSB75F<br>(F= Flange Mount)<br>◆❖ | 1.250 in    | U<br>(square) | 34.93 mm<br>[1.375 in] | left side              | 970140                   | T&S-800A             | 960761                  |           |        |
|                                   |             |               |                        | right side             | 970141                   |                      |                         |           |        |
|                                   | 1.500 in    |               |                        | left side              | 970146                   |                      |                         | T&S-1000A | 960762 |
|                                   |             |               |                        | right side             | 970147                   |                      |                         |           |        |
|                                   | 1.250 in    |               |                        | left side              | 970142                   | T&S-1000A            | 960762                  |           |        |
|                                   |             |               |                        | right side             | 970143                   |                      |                         |           |        |
|                                   | 1.500 in    |               |                        | left side              | 970148                   |                      |                         | T&S-1000A | 960762 |
|                                   |             |               |                        | right side             | 970149                   |                      |                         |           |        |

| Safety Chuck Model                 | Socket Size | Socket Type   | Shaft Diameter         | Safety Button Location | Safety Chuck Part Number | Compatible Brake(s)* | Adaptor Kit Part Number |
|------------------------------------|-------------|---------------|------------------------|------------------------|--------------------------|----------------------|-------------------------|
| CSB75F<br>(F= Flange Mount)<br>◆❖  | 1.250 in    | U<br>(square) | 34.93 mm<br>[1.375 in] | left side              | 970144                   | BTBA-10              | 960763                  |
|                                    | 1.500 in    |               |                        | right side             | 970145                   |                      |                         |
|                                    |             |               |                        | left side              | 970150                   |                      |                         |
|                                    |             |               |                        | right side             | 970151                   |                      |                         |
|                                    |             |               |                        | left side              | 960730                   | BTBA-12              | 960764                  |
|                                    | right side  |               |                        | 960732                 |                          |                      |                         |
|                                    | left side   |               |                        | 960738                 |                          |                      |                         |
|                                    | right side  |               |                        | 960740                 |                          |                      |                         |
| CSB125P<br>(P= Foot Mount)<br>◆❖   | 1.250 in    | V<br>(square) | 34.93 mm<br>[1.375 in] | left side              | 960765                   | T&S-800A             | 960761                  |
|                                    | 1.500 in    |               |                        | right side             | 970113                   |                      |                         |
|                                    |             |               |                        | left side              | 970118                   |                      |                         |
|                                    |             |               |                        | right side             | 970119                   |                      |                         |
|                                    |             |               |                        | left side              | 970114                   | T&S-1000A            | 960762                  |
|                                    | right side  |               |                        | 970115                 |                          |                      |                         |
|                                    | left side   |               |                        | 970120                 |                          |                      |                         |
|                                    | right side  |               |                        | 970121                 |                          |                      |                         |
|                                    | left side   |               |                        | 970116                 | BTBA-10                  | 960763               |                         |
|                                    | right side  |               |                        | 970117                 |                          |                      |                         |
|                                    | left side   |               |                        | 970122                 |                          |                      |                         |
|                                    | right side  |               |                        | 970123                 |                          |                      |                         |
|                                    | left side   |               |                        | 960742                 | BTBA-12                  | 960764               |                         |
|                                    | right side  |               |                        | 960744                 |                          |                      |                         |
|                                    | left side   |               |                        | 960746                 |                          |                      |                         |
|                                    | right side  |               |                        | 960748                 |                          |                      |                         |
| CSB125F<br>(F= Flange Mount)<br>◆❖ | 1.250 in    | V<br>(square) | 34.93 mm<br>[1.375 in] | left side              | 970100                   | T&S-800A             | 960761                  |
|                                    | 1.500 in    |               |                        | right side             | 970101                   |                      |                         |
|                                    |             |               |                        | left side              | 970106                   |                      |                         |
|                                    |             |               |                        | right side             | 970107                   |                      |                         |
|                                    |             |               |                        | left side              | 970102                   | T&S-1000A            | 960762                  |
|                                    | right side  |               |                        | 970103                 |                          |                      |                         |
|                                    | left side   |               |                        | 970108                 |                          |                      |                         |
|                                    | right side  |               |                        | 970109                 |                          |                      |                         |
|                                    | left side   |               |                        | 970104                 | BTBA-10                  | 960763               |                         |
|                                    | right side  |               |                        | 970105                 |                          |                      |                         |
|                                    | left side   |               |                        | 970110                 |                          |                      |                         |
|                                    | right side  |               |                        | 970111                 |                          |                      |                         |
|                                    | left side   |               |                        | 960750                 | BTBA-12                  | 960764               |                         |
|                                    | right side  |               |                        | 960752                 |                          |                      |                         |
|                                    | left side   |               |                        | 960754                 |                          |                      |                         |
|                                    | right side  |               |                        | 960756                 |                          |                      |                         |

\* Brake bore must match safety chuck shaft diameter.

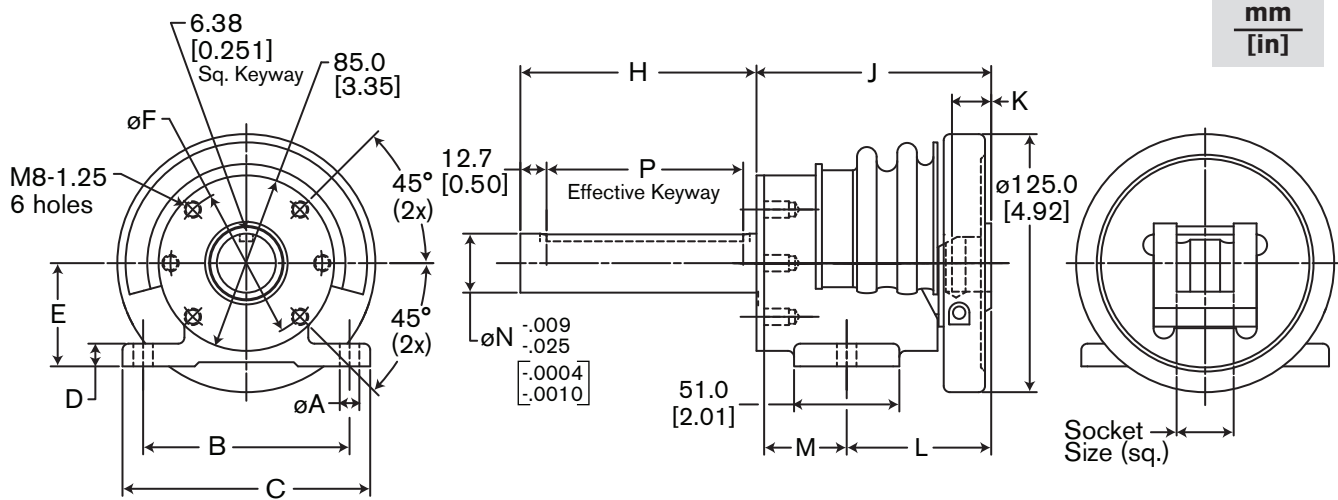
■ See pages 6 and 7 for safety chuck mounting dimensions.

**NOTE: Dimension "H" may be less than the value shown based upon model of brake used.**

◆❖ See pages 8-11 for safety chuck mounting dimensions.

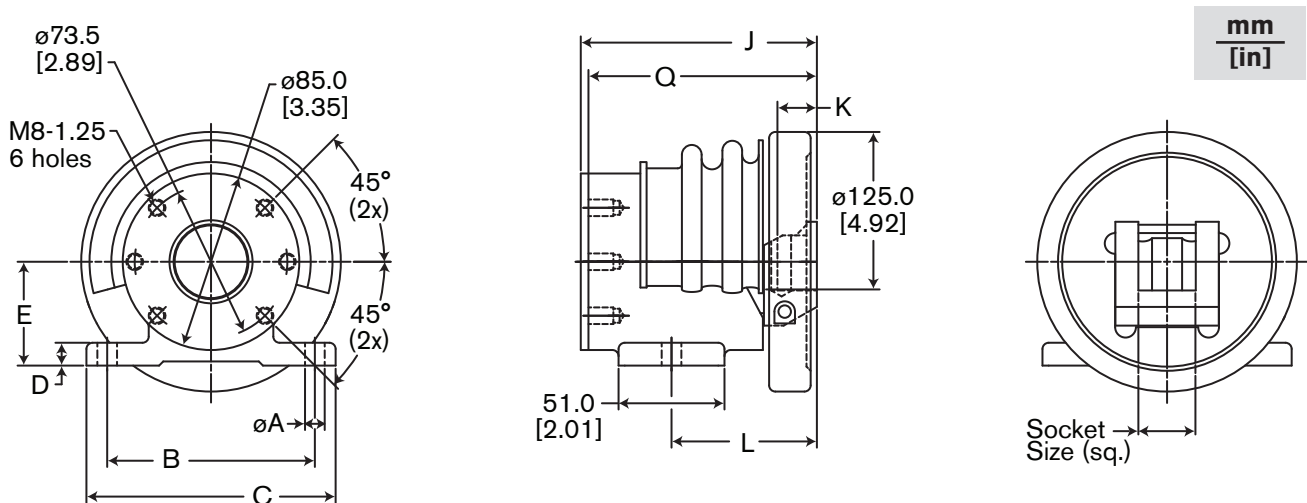
**NOTE: Given shaft length of 142.9 mm [5.63 in] may be less based upon model of brake used.**

## Foot-Mount Safety Chuck with Shaft, Approximate Dimensions



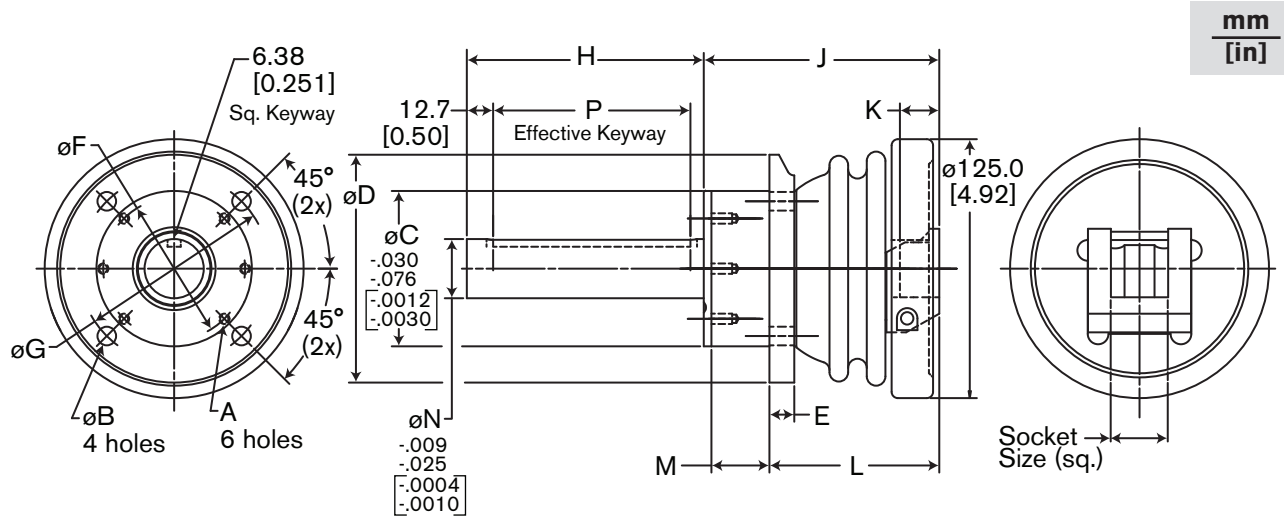
| Model  | Product Number | Socket Size | øA     | B      | C      | D      | E      | øF     | H      | J      | K      | L      | M      | øN       | P      |
|--------|----------------|-------------|--------|--------|--------|--------|--------|--------|--------|--------|--------|--------|--------|----------|--------|
| CSB25P | 960710         | 1.00" U     | 9.5    | 100.0  | 120.0  | 11.0   | 50.0   | 73.5   | 114.4  | 113.7  | 19.0   | 70.0   | 40.0   | 28.575   | 95.2   |
|        | 960714         | 1.25" U     | [0.37] | [3.94] | [4.72] | [0.43] | [1.97] | [2.89] | [4.50] | [4.48] | [0.75] | [2.76] | [1.57] | [1.1250] | [3.75] |
| CSB50P | 960718         | 1.00" U     | 13.0   | 105.0  | 140.0  | 22.0   | 65.0   | 73.5   | 127.1  | 134.7  | 22.0   | 78.0   | 53.0   | 31.750   | 108.0  |
|        | 960720         | 1.25" U     | [0.51] | [4.13] | [5.51] | [0.87] | [2.56] | [2.89] | [5.00] | [5.30] | [0.87] | [3.07] | [2.09] | [1.2500] | [4.25] |

## Foot-Mount Safety Chuck without Shaft, Approximate Dimensions



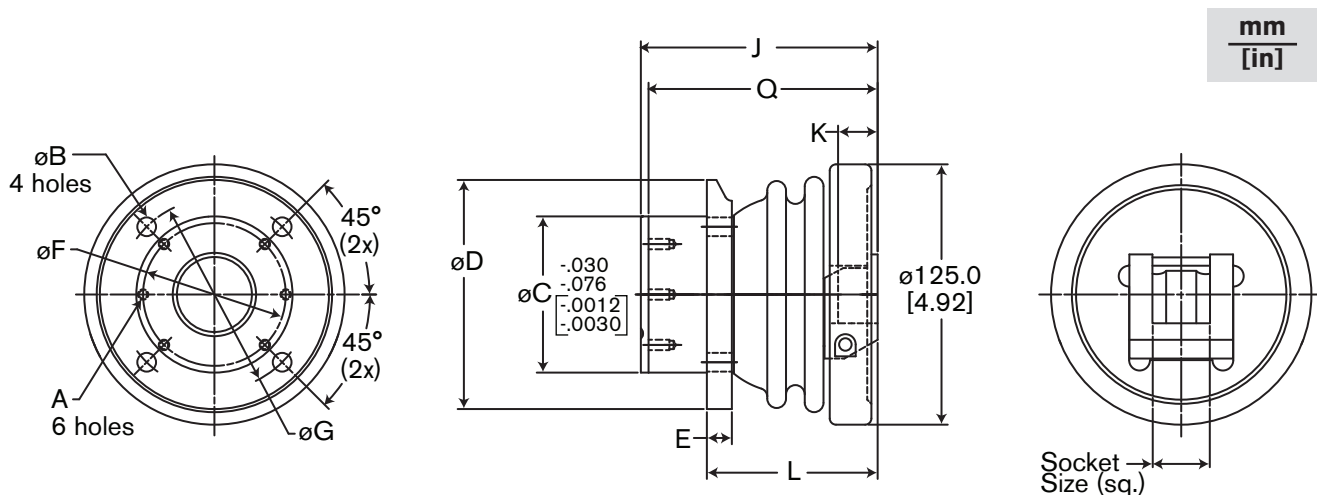
| Model  | Product Number | Socket Size | øA     | B      | C      | D      | E      | J      | Q      | K      | L      |
|--------|----------------|-------------|--------|--------|--------|--------|--------|--------|--------|--------|--------|
| CSB25P | 960711         | 1.00" U     | 9.5    | 100.0  | 120.0  | 11.0   | 50.0   | 113.7  | 110.0  | 19.0   | 70.0   |
|        | 960715         | 1.25" U     | [0.37] | [3.94] | [4.72] | [0.43] | [1.97] | [4.48] | [4.33] | [0.75] | [2.76] |
| CSB50P | 960719         | 1.00" U     | 13.0   | 105.0  | 140.0  | 22.0   | 65.0   | 134.7  | 131.0  | 22.0   | 78.0   |
|        | 960721         | 1.25" U     | [0.51] | [4.13] | [5.51] | [0.87] | [2.56] | [5.30] | [5.16] | [0.87] | [3.07] |

## Flange-Mount Safety Chuck with Shaft, Approximate Dimensions



| Model  | Product Number | Socket Size | A       | øB     | øC      | øD     | E      | øF     | øG     | H      | J      | K      | L      | M      | øN       | P      |
|--------|----------------|-------------|---------|--------|---------|--------|--------|--------|--------|--------|--------|--------|--------|--------|----------|--------|
| CSB25F | 960712         | 1.00" U     | M5-0.8  | 9.0    | 75.00   | 110.0  | 12.0   | 68.5   | 92.0   | 114.4  | 113.7  | 19.0   | 82.0   | 28.0   | 28.575   | 95.2   |
|        | 960716         | 1.25" U     | 6 holes | [0.35] | [2.953] | [4.33] | [0.47] | [2.70] | [3.62] | [4.50] | [4.48] | [0.75] | [3.23] | [1.10] | [1.1250] | [3.75] |
| CSB50F | 960722         | 1.00" U     | M8-1.25 | 11.0   | 90.00   | 140.0  | 15.0   | 76.0   | 115.0  | 127.1  | 134.7  | 22.0   | 91.0   | 40.0   | 31.750   | 108.0  |
|        | 960724         | 1.25" U     | 6 holes | [0.43] | [3.543] | [5.51] | [0.59] | [2.99] | [4.53] | [5.00] | [5.30] | [0.87] | [3.58] | [1.57] | [1.2500] | [4.25] |

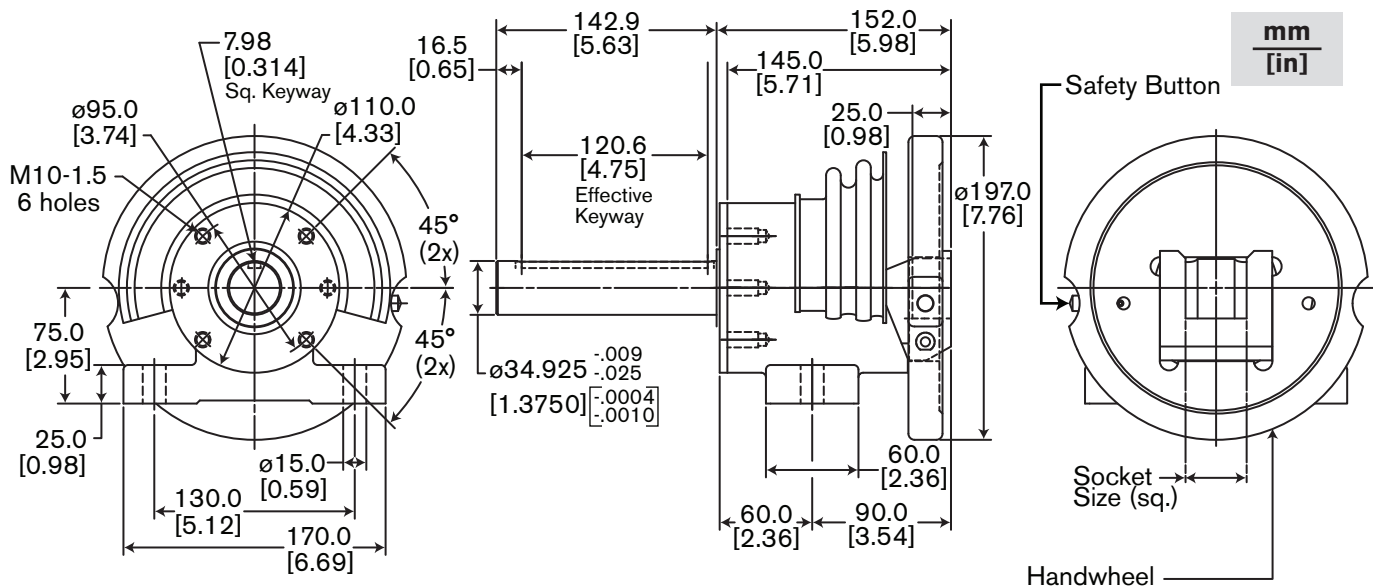
## Flange-Mount Safety Chuck without Shaft, Approximate Dimensions



| Model  | Product Number | Socket Size | A       | øB      | øC       | øD     | E      | øF     | øG     | J      | Q      | K       | L      |
|--------|----------------|-------------|---------|---------|----------|--------|--------|--------|--------|--------|--------|---------|--------|
| CSB25F | 960713         | 1.00" U     | M5-0.8  | 9.00    | 75.000   | 110.0  | 12.0   | 68.5   | 92.0   | 113.7  | 110.0  | 19.00   | 82.0   |
|        | 960717         | 1.25" U     | 6 holes | [0.354] | [2.9528] | [4.33] | [0.47] | [2.70] | [3.62] | [4.48] | [4.33] | [0.748] | [3.23] |
| CSB50F | 960723         | 1.00" U     | M8-1.25 | 11.0    | 90.00    | 140.0  | 15.0   | 76.0   | 115.0  | 134.7  | 131.0  | 22.0    | 91.0   |
|        | 960725         | 1.25" U     | 6 holes | [0.43]  | [3.543]  | [5.51] | [0.59] | [2.99] | [4.53] | [5.30] | [5.16] | [0.87]  | [3.58] |

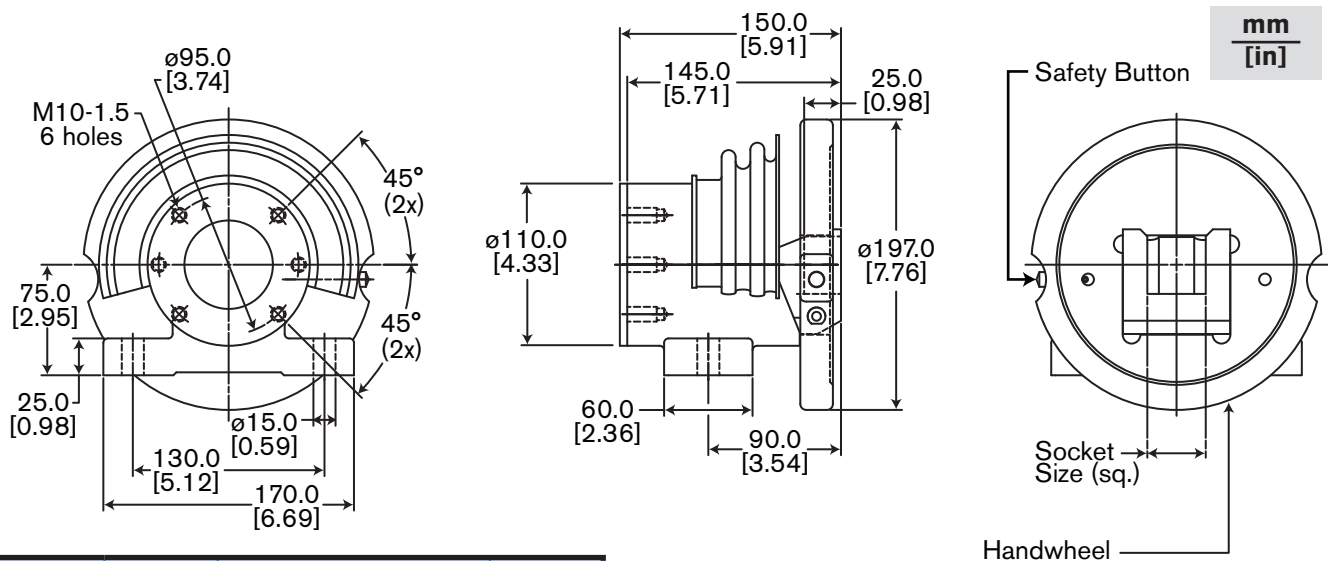


## Foot-Mount Safety Chuck with Shaft<sup>1</sup>, Approximate Dimensions



| Model  | Product Number | Safety Button Location <sup>2</sup> | Socket Size |
|--------|----------------|-------------------------------------|-------------|
| CSB75P | 960726         | Left side of handwheel              | 1.25" U     |
|        | 960728         | Right side of handwheel             |             |
|        | 960734         | Left side of handwheel              | 1.50" U     |
|        | 960736         | Right side of handwheel             |             |

## Foot-Mount Safety Chuck without Shaft<sup>1</sup>, Approximate Dimensions



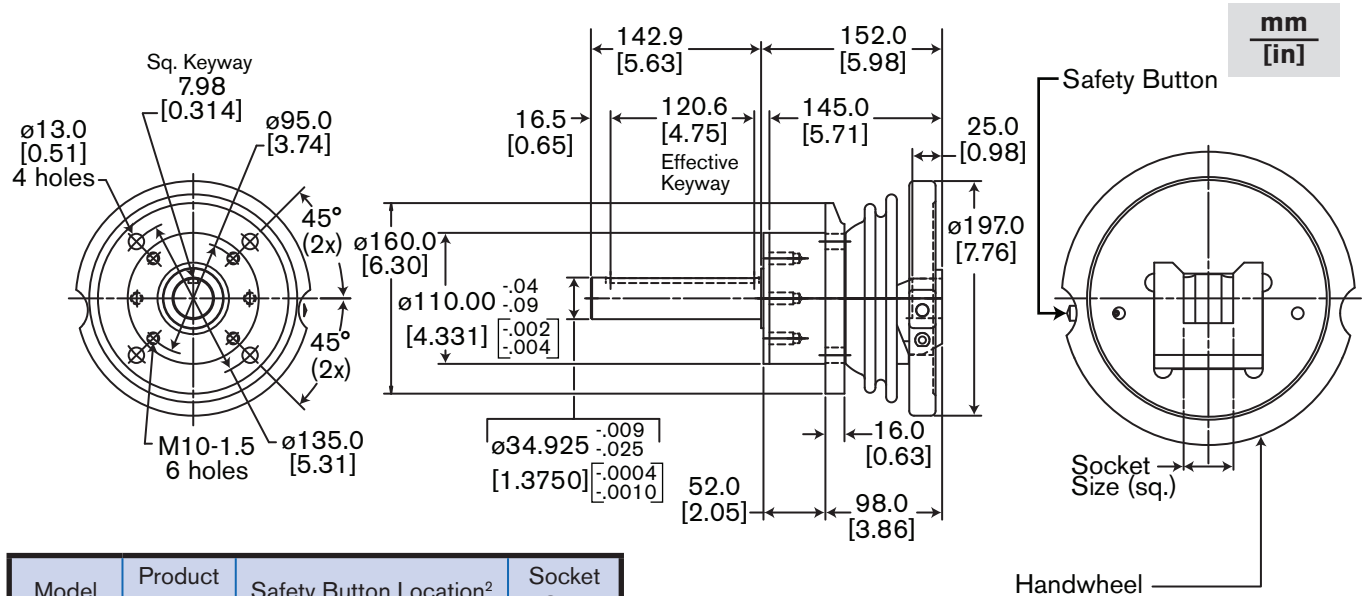
| Model  | Product Number | Safety Button Location <sup>2</sup> | Socket Size |
|--------|----------------|-------------------------------------|-------------|
| CSB75P | 960727         | Left side of handwheel              | 1.25" U     |
|        | 960729         | Right side of handwheel             |             |
|        | 960735         | Left side of handwheel              | 1.50" U     |
|        | 960737         | Right side of handwheel             |             |

<sup>1</sup>These models have safety buttons.

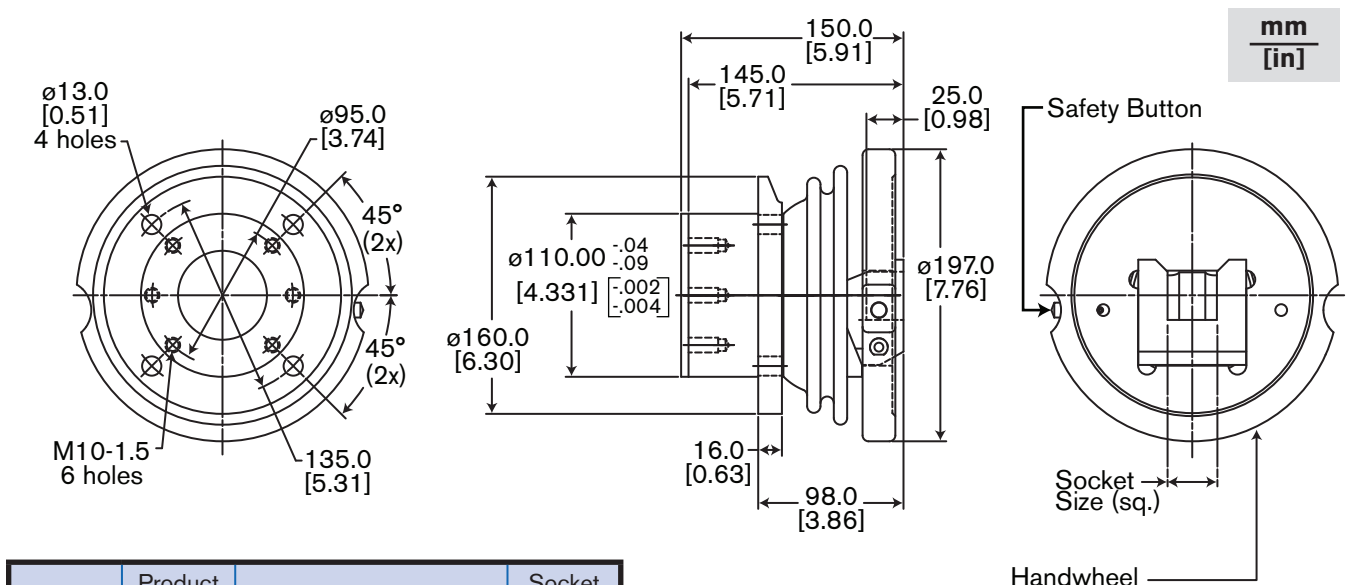
<sup>2</sup>Location of safety button when facing socket.



## Flange-Mount Safety Chuck with Shaft<sup>1</sup>, Approximate Dimensions



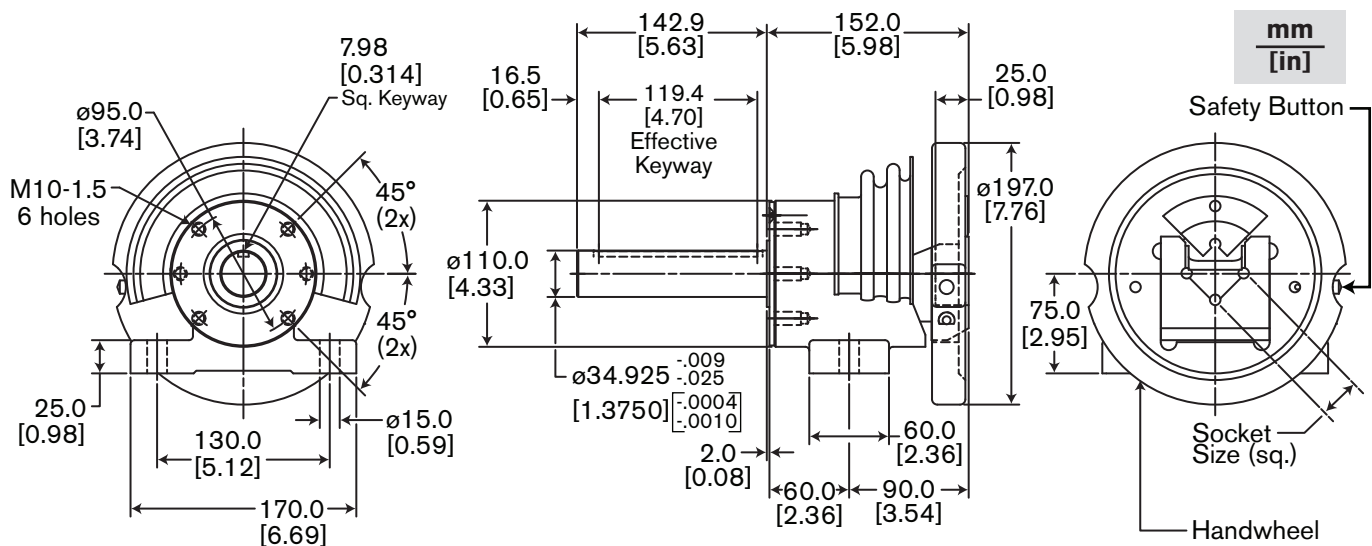
## Flange-Mount Safety Chuck without Shaft<sup>1</sup>, Approximate Dimensions



<sup>1</sup>These models have safety buttons.

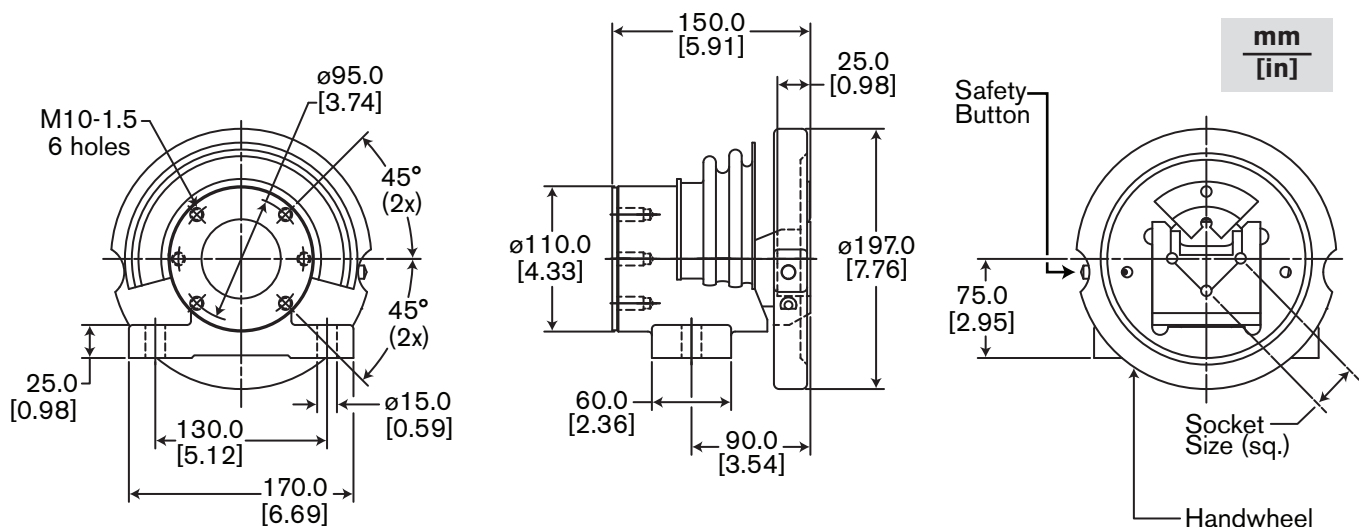
<sup>2</sup>Location of safety button when facing socket.

## Foot-Mount Safety Chuck with Shaft<sup>1</sup>, Approximate Dimensions



| Model   | Product Number | Safety Button Location  | Socket Size |
|---------|----------------|-------------------------|-------------|
| CSB125P | 960742         | Left side of handwheel  | 1.25" V     |
|         | 960744         | Right side of handwheel |             |
|         | 960746         | Left side of handwheel  | 1.50" V     |
|         | 960748         | Right side of handwheel |             |

## Foot-Mount Safety Chuck without Shaft<sup>1</sup>, Approximate Dimensions



| Model   | Product Number | Safety Button Location <sup>2</sup> | Socket Size |
|---------|----------------|-------------------------------------|-------------|
| CSB125P | 960743         | Left side of handwheel              | 1.25" V     |
|         | 960745         | Right side of handwheel             |             |
|         | 960747         | Left side of handwheel              | 1.50" V     |
|         | 960749         | Right side of handwheel             |             |

<sup>1</sup>These models have safety buttons.

<sup>2</sup>Location of safety button when facing socket.

Technical drawing of the 1000 Series Handwheel Assembly, showing front, side, and detail views with dimensions in mm and inches.

**Front View Dimensions:**

- Outer diameter:  $\phi 135.0$  [5.31]
- Inner diameter:  $\phi 13.0$  [0.51]
- 4 holes
- M10-1.5 6 holes
- Inner diameter:  $\phi 95.0$  [3.74]
- Keyway width: 7.98 [0.314]
- Keyway angle: 45° (2x)

**Side View Dimensions:**

- Overall length: 142.9 [5.63]
- Effective Keyway length: 116.1 [4.57]
- Handwheel thickness: 25.0 [0.98]
- Handwheel outer diameter:  $\phi 197.0$  [7.76]
- Handwheel inner diameter:  $\phi 160.0$  [6.30]
- Handwheel bore diameter:  $\phi 110.000$  [4.3307]
- Handwheel bore tolerances:  $-.036$  to  $-.090$  and  $-.0014$  to  $-.0036$
- Handwheel bore diameter:  $\phi 34.925$  [1.3750]
- Handwheel bore tolerances:  $-.009$  to  $-.025$  and  $-.0004$  to  $-.0010$
- Handwheel bore length: 54.0 [2.13]
- Handwheel bore diameter:  $\phi 34.925$  [1.3750]
- Handwheel bore tolerances:  $-.009$  to  $-.025$  and  $-.0004$  to  $-.0010$
- Handwheel bore length: 2.0 [0.08]
- Handwheel bore diameter:  $\phi 34.925$  [1.3750]
- Handwheel bore tolerances:  $-.009$  to  $-.025$  and  $-.0004$  to  $-.0010$
- Handwheel bore length: 16.0 [0.63]
- Handwheel bore diameter:  $\phi 34.925$  [1.3750]
- Handwheel bore tolerances:  $-.009$  to  $-.025$  and  $-.0004$  to  $-.0010$
- Handwheel bore length: 98.0 [3.86]

**Detail View Dimensions:**

- Socket Size (sq.)
- Handwheel

**Conversion Table:**

| mm      | [in]   |
|---------|--------|
| 135.0   | 5.31   |
| 13.0    | 0.51   |
| 95.0    | 3.74   |
| 7.98    | 0.314  |
| 142.9   | 5.63   |
| 116.1   | 4.57   |
| 25.0    | 0.98   |
| 197.0   | 7.76   |
| 160.0   | 6.30   |
| 110.000 | 4.3307 |
| 34.925  | 1.3750 |
| 54.0    | 2.13   |
| 2.0     | 0.08   |
| 16.0    | 0.63   |
| 98.0    | 3.86   |

| Model   | Product Number | Safety Button Location  | Socket Size |
|---------|----------------|-------------------------|-------------|
| CSB125F | 960750         | Left side of handwheel  | 1.25" V     |
|         | 960752         | Right side of handwheel |             |
|         | 960754         | Left side of handwheel  | 1.50" V     |
|         | 960756         | Right side of handwheel |             |

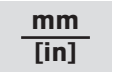
[illegible]

| Model   | Product Number | Safety Button Location <sup>2</sup> | Socket Size |
|---------|----------------|-------------------------------------|-------------|
| CSB125F | 960751         | Left side of handwheel              | 1.25" V     |
|         | 960753         | Right side of handwheel             |             |
|         | 960755         | Left side of handwheel              | 1.50" V     |
|         | 960757         | Right side of handwheel             |             |

<sup>1</sup>These models have safety buttons.

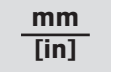
<sup>2</sup>Location of safety button when facing socket.

### Foot-Mount Safety Chuck with Shaft<sup>1</sup>, Approximate Dimensions



| Model   | Product Number | Safety Button Location <sup>2</sup> | Socket Size |
|---------|----------------|-------------------------------------|-------------|
| CSB150P | 970176         | Left side of handwheel              | 1.25" U     |
|         | 970184         | Right side of handwheel             |             |
|         | 970192         | Left side of handwheel              | 1.50" U     |
|         | 970200         | Right side of handwheel             |             |
|         | 970208         | Left side of handwheel              | 2.00" U     |
|         | 970216         | Right side of handwheel             |             |

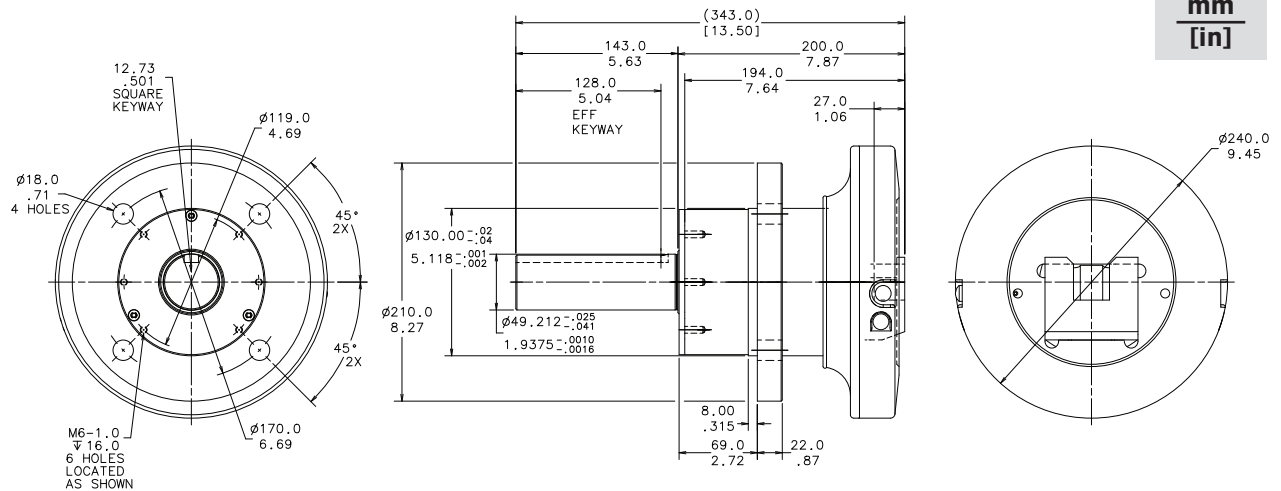
### Foot-Mount Safety Chuck without Shaft<sup>1</sup>, Approximate Dimensions



| Model   | Product Number | Safety Button Location <sup>2</sup> | Socket Size |
|---------|----------------|-------------------------------------|-------------|
| CSB150P | 970180         | Left side of handwheel              | 1.25" U     |
|         | 970188         | Right side of handwheel             |             |
|         | 970196         | Left side of handwheel              | 1.50" U     |
|         | 970204         | Right side of handwheel             |             |
|         | 970212         | Left side of handwheel              | 2.00" U     |
|         | 970220         | Right side of handwheel             |             |

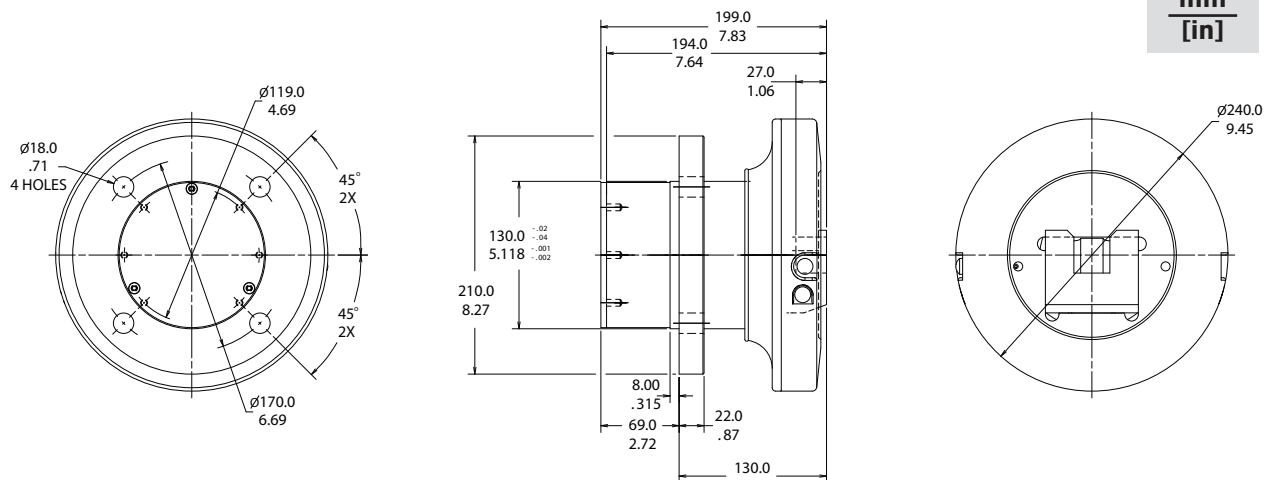
<sup>2</sup>Location of safety button when facing socket.

## Flange-Mount Safety Chuck with Shaft<sup>1</sup>, Approximate Dimensions



| Model   | Product Number | Safety Button Location <sup>2</sup> | Socket Size |
|---------|----------------|-------------------------------------|-------------|
| CSB150F | 970174         | Left side of handwheel              | 1.25" U     |
|         | 970182         | Right side of handwheel             |             |
|         | 970190         | Left side of handwheel              | 1.50" U     |
|         | 970198         | Right side of handwheel             |             |
|         | 970206         | Left side of handwheel              | 2.00" U     |
|         | 970214         | Right side of handwheel             |             |

## Flange-Mount Safety Chuck without Shaft<sup>1</sup>, Approximate Dimensions

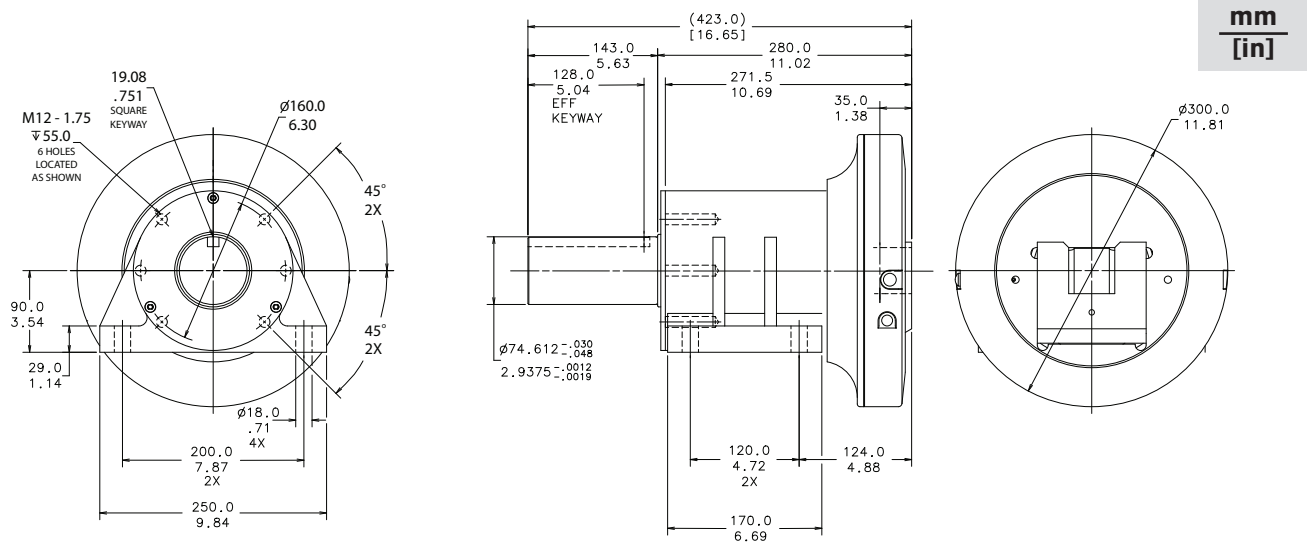


| Model   | Product Number | Safety Button Location <sup>2</sup> | Socket Size |
|---------|----------------|-------------------------------------|-------------|
| CSB150F | 970178         | Left side of handwheel              | 1.25" U     |
|         | 970186         | Right side of handwheel             |             |
|         | 970194         | Left side of handwheel              | 1.50" U     |
|         | 970202         | Right side of handwheel             |             |
|         | 970210         | Left side of handwheel              | 2.00" U     |
|         | 970218         | Right side of handwheel             |             |

<sup>1</sup>These models have safety buttons.

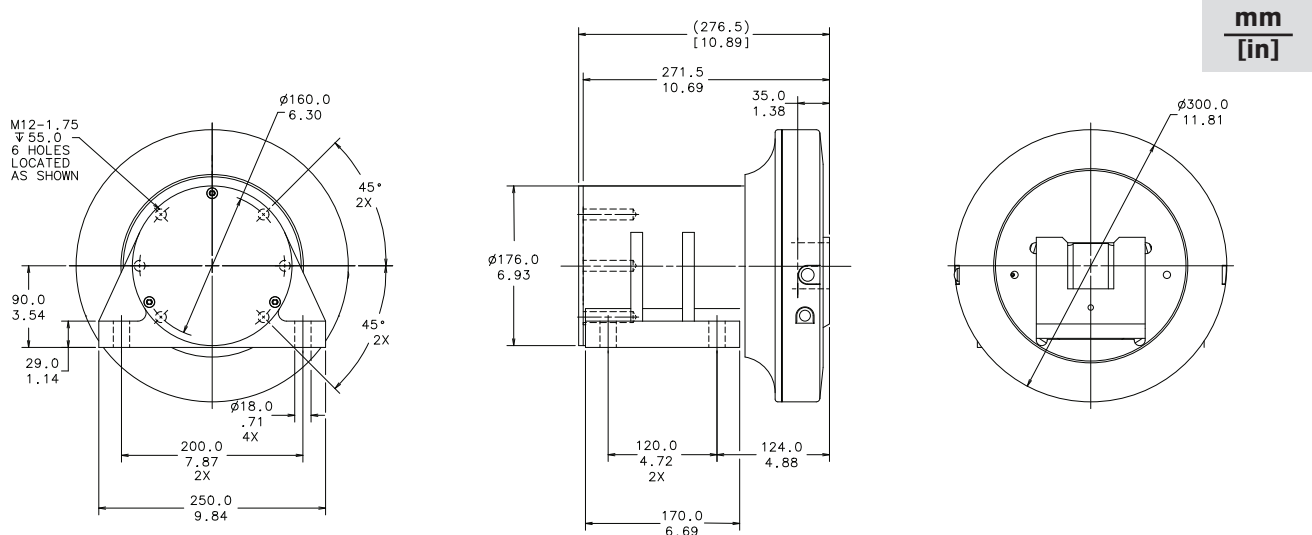
<sup>2</sup>Location of safety button when facing socket.

## Foot-Mount Safety Chuck with Shaft<sup>1</sup>, Approximate Dimensions



| Model   | Product Number | Safety Button Location <sup>2</sup> | Socket Size |
|---------|----------------|-------------------------------------|-------------|
| CSB175P | 970224         | Left side of handwheel              | 2.00" U     |
|         | 970232         | Right side of handwheel             |             |
|         | 970240         | Left side of handwheel              | 3.00" U     |
|         | 970248         | Right side of handwheel             |             |

## Foot-Mount Safety Chuck without Shaft<sup>1</sup>, Approximate Dimensions

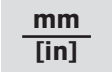


| Model   | Product Number | Safety Button Location <sup>2</sup> | Socket Size |
|---------|----------------|-------------------------------------|-------------|
| CSB175P | 970228         | Left side of handwheel              | 2.00" U     |
|         | 970236         | Right side of handwheel             |             |
|         | 970244         | Left side of handwheel              | 3.00" U     |
|         | 970252         | Right side of handwheel             |             |

<sup>1</sup>These models have safety buttons.

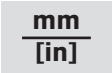
<sup>2</sup>Location of safety button when facing socket.

### Flange-Mount Safety Chuck with Shaft<sup>1</sup>, Approximate Dimensions



| Model   | Product Number | Safety Button Location <sup>2</sup> | Socket Size |
|---------|----------------|-------------------------------------|-------------|
| CSB175F | 970222         | Left side of handwheel              | 2.00" U     |
|         | 970230         | Right side of handwheel             |             |
|         | 970238         | Left side of handwheel              | 3.00" U     |
|         | 970246         | Right side of handwheel             |             |

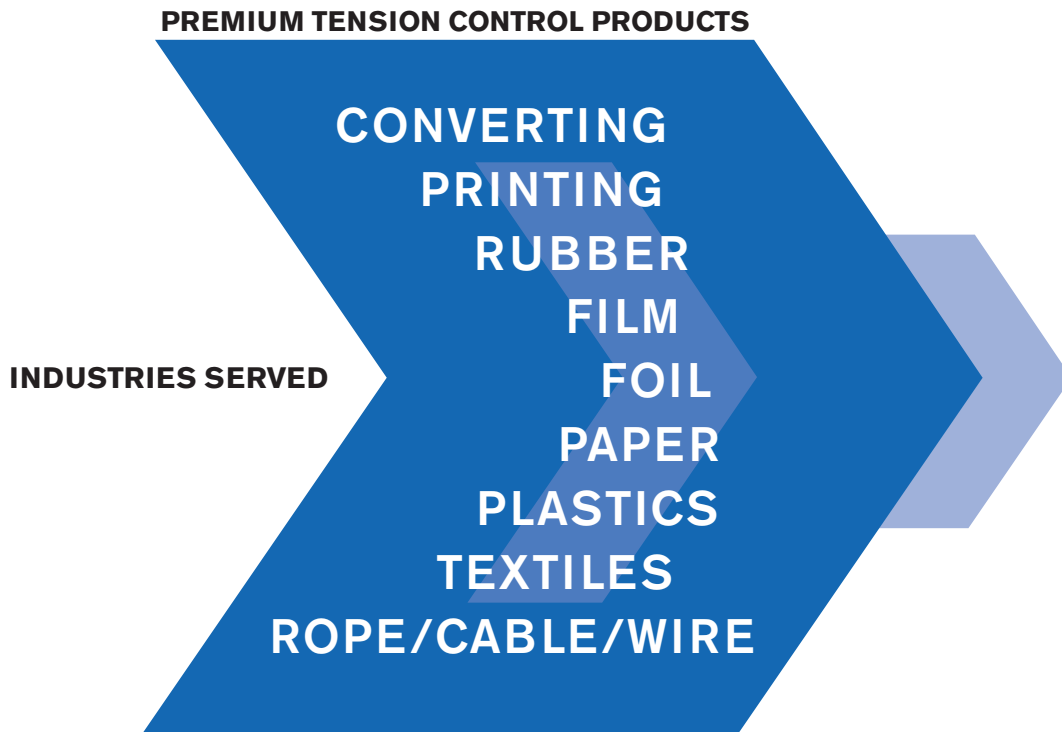
### Flange-Mount Safety Chuck without Shaft<sup>1</sup>, Approximate Dimensions



| Model   | Product Number | Safety Button Location <sup>2</sup> | Socket Size |
|---------|----------------|-------------------------------------|-------------|
| CSB175F | 970226         | Left side of handwheel              | 2.00" U     |
|         | 970234         | Right side of handwheel             |             |
|         | 970242         | Left side of handwheel              | 3.00" U     |
|         | 970250         | Right side of handwheel             |             |

<sup>2</sup>Location of safety button when facing socket.





In accordance with Nexen's established policy of constant product improvement, the specifications contained in this document are subject to change without notice. Technical data listed in this document are based on the latest information available at the time of printing and are also subject to change without notice. For current information, please consult [www.nexengroup.com](http://www.nexengroup.com)

**nexen**<sup>®</sup>

Nexen Group, Inc.  
560 Oak Grove Parkway  
Vadnais Heights, MN 55127

800.843.7445  
Fax: 651.286.1099  
[www.nexengroup.com](http://www.nexengroup.com)

ISO 9001 Certified

©2006 Nexen Group, Inc.  
21203-C-0506