

REDI MEASURE[®]
by REDINGTON
Since 1961

Linear Measuring Wheels





Features

These medium-duty linear measuring wheels are used for estimating distances on smooth surfaces indoors and out. They feature a 5-figure display with bold .20" high numerals, and are capable of counting to 10000 feet or 1000 meters, depending on the model chosen. Their lightweight design eases handling, and the reset button is protected by a raised collar. The bright orange color increases visibility. Single and dual wheel models are available, as are multi-position straight or curved handles. Component parts are sold separately for quick field repairs. These wheels are widely used by contractors, utilities, accident investigators, real estate agents, and landscapers.

Single Wheel

Dual Wheel

Specifications

Specifications

Figures	5 figures, .20" high
Reset	Push-button
Warranty	Lifetime
Weight	1.2 lbs.
Extended Size	44"(curved handle), 39"(straight handle)
Storage Size	28"(curved handle), 17"(straight handle)
Wheel Size	Wheels are identified by their circumference 1 ft. wheel has a diameter of ~3.8 in. 30 cm. wheel has a diameter of ~9.5 cm.

Figures	5 figures, .20" high
Reset	Push-button
Warranty	Lifetime
Weight	1.4 lbs.
Extended Size	44" (curved handle), 39" (straight handle)
Storage Size	28" (curved handle), 17" (straight handle)
Wheel Size	Wheels are identified by their circumference. 1 ft. wheel has a diameter of ~3.8 in. 30 cm. wheel has a diameter of ~9.5 cm.

Models	Description
11-0735	1 ft., 9999 ft.11 in., straight handle
13-0735	1 ft., 9999 ft.11 in., curved handle
15-0735	1 ft., 9999.9 ft., straight handle
17-0735	1 ft., 9999.9 ft., curved handle
11-0725	30 cm., 999.99 m, straight handle
13-0725	30 cm., 999.99 m, curved handle

Models	Description
12-0735	1 ft., 9999 ft.11 in., straight handle
14-0735	1 ft., 9999 ft.11 in., curved handle
16-0735	1 ft., 9999.9 ft., straight handle
18-0735	1 ft., 9999.9 ft., curved handle
12-0725	30 cm., 999.99 m, straight handle
14-0725	30 cm., 999.99 m, curved handle



Features

These sturdy multi-purpose measuring wheels are best suited for quick and easy measuring over a variety of surfaces. They feature a 5-figure display with bold .20" high numerals and are capable of counting to 10,000 feet or meters, depending on the model chosen. Their lightweight design eases handling, and the reset button is protected by a raised collar. These models are available with multi-position straight or curved handles. Component parts are sold separately for quick field repairs. These units are widely used for estimating by contractors, accident investigators, landscapers, surveyors, real estate agents, and farmers.

Specifications

Figures	5 figures, .20" high
Reset	Push-button
Warranty	Lifetime
Weight	1.9 lbs.
Extended Size	48" (curved handle), 43" (straight handle)
Storage Size	32" (curved handle), 21" (straight handle)
Wheel Size	Wheels are identified by their circumference. 3 ft. wheel has a diameter of ~11.5 in. 1 m. wheel has a diameter of ~32 cm.

Models

Description

11-0765	3 ft., 9999 ft.11 in., curved handle
12-0765	3 ft., 9999 ft.11 in., straight handle
13-0765	3 ft., 9999.9 ft., curved handle
14-0765	3 ft., 9999.9 ft., straight handle
11-0755	1 m., 9999.9 m., curved handle
12-0755	1 m., 9999.9 m., straight handle
200700-065s	Metal Stand & Hardware Kit (for 0755 & 0765)

Features

These heavy-duty measuring wheels are best suited for outdoor use, recording long distances over a variety of surfaces, including rough terrain. Their lightweight design eases handling and reduces fatigue. They are capable of counting to 100,000 feet or meters depending on the model chosen. These "In-line" models are available with 3 ft., 4 ft., and 1 meter circumference wheels. Component parts are sold separately for quick field repairs. The bright orange wheel enhances visibility, and the fold down handle reduces storage space. These models are widely used for estimating by contractors, agriculturalists, surveyors and landscapers.

Specifications

Figures	5 figures, .19" high
Reset	Rotary knob
Warranty	Lifetime
Weight	3.6 lbs. with stand 3.0 lbs. without stand (3 ft. or 1 m. models only)
Extended Size	40"
Storage Size	3 ft. & 1 m: 26"; 4 ft: 24"
Wheel Size	Wheels are identified by their circumference. 4 ft. wheel has a diameter of ~15.3 in. 3 ft. wheel has a diameter of ~11.5 in. 1 m. wheel has a diameter of ~32 cm.

Models

Description

11-0795	4 ft., 99999 ft., curved handle, with stand
12-0795	4 ft., 99999 ft., curved handle, dual counter, with stand
15-0795	3 ft., 99999 ft., curved handle, without stand
17-0795	3 ft., 99999 ft., curved handle, with stand
14-0795	1 m., 99999 m., curved handle, without stand
16-0795	1 m., 99999 m., curved handle, with stand



Get Started Package

Our "Getting Started Package" is an easy way to get set up as an authorized re-seller of our Measuring Wheels. The package comes with a variety of Measuring Wheels (tailored to meet your specific requirements), a display rack, and product literature. Call your sales representative for more information

- Features 5 of the Most Popular Redi-Measure Wheels
- Free Display and Literature
- Lifetime Warranty
- Free Freight

Call your sales representative for more details on getting set up as a Measuring Wheel Distributor.

Carrying Cases



Protect your measuring wheel with a handy carrying case. Carrying Cases are available for all models of the Redi-Measure measuring wheels. Durable black measuring wheel carrying cases with shoulder strap.

Models

Description

1886-003s	For 3 ft or 1 meter with curved handle
1886-004s	For 3 ft or 1 meter with straight handle and 3 ft or 1 meter inline without stand
1886-005s	For 4 ft curved handle with stand and, 3 ft or 1 meter inline with stand

Hand Tallys



A 4 figure, hand-held, desk mounted, or electronic reset counter with push-button actuator. Electronic Model E6 is completely sealed and suitable for outdoor use. These Tallys are a convenient way to count inventory, attendance, or traffic..

Models

Description

12-1804	Mechanical Hand Tally
13-1804	Mechanical Desk Tally
E6-1804	Electronic Ring Tally

Spare Parts

All of the component parts for our Measuring Wheels are sold separately to replace damaged parts or to keep on hand for quick field repairs. Contact your sales representative for the correct part number for the part you are looking for.

LIFETIME WARRANTY

REDINGTON COUNTERS, INC. WARRANTS THAT ITS REDI-MEASURE WHEELS WILL BE FREE FROM DEFECTS RELATED TO MATERIALS AND/OR WORKMANSHIP FOR THE LIFE OF THE PRODUCT.

WITHIN THIS WARRANTY PERIOD, REDINGTON COUNTERS, INC. WILL REPAIR OR REPLACE SUCH PRODUCTS RETURNED TO REDINGTON COUNTERS, INC., FREIGHT PREPAID, THAT ARE DETERMINED BY REDINGTON COUNTERS, INC. TO BE DEFECTIVE. NO PRODUCTS SHALL BE RETURNED TO REDINGTON COUNTERS, INC. WITHOUT REDINGTON COUNTERS, INC. PRIOR CONSENT.

THIS WARRANTY IS EXCLUSIVE AND IN LIEU OF ALL OTHER WARRANTIES WHETHER EXPRESSED OR IMPLIED, INCLUDING ANY IMPLIED WARRANTY OF MERCHANTABILITY OR FITNESS FOR A PARTICULAR PURPOSE, AND SHALL NOT APPLY TO ANY PRODUCT WHICH HAS BEEN SUBJECT TO ALTERATION, MISUSE, ABUSE, NEGLIGENCE, OR ACCIDENT; IN NO EVENT SHALL REDINGTON COUNTERS, INC. BE LIABLE FOR ANY CONSEQUENTIAL OR INCIDENTAL DAMAGES.



REDINGTON

Counters, Hour Meters, Controllers, Indicators

PO Box 608, 130 Addison Rd., Windsor, CT 06095

Phone: (860) 688-6205

Fax: (860) 688-1591



Description

The Redington Model 9300-HTK hand tachometer kit utilizes state of the art technology at an affordable cost. Simple to use... push the measurement button to record the speed. The tachometer can be used for contact or non-contact measurement on rotating machinery or surface speed. The 9300-HTK can indicate RPM or rotational speed, length measurement, meters, yards, or feet per minute. The photoelectric probe is used with reflective tape to detect rotating objects. The accessory adaptor with pointed tip can be added for contact measurement or wheels can be used for surface speed measurement.

Features

- Combination unit - photo and contact
- Laser sighting operating range up to 40.0" [1000mm]
- Auto ranging - fixed decimal
- Tripod mounting bushing
- Low battery indicator
- Max / min / avg
- 40 points of memory
- Carrying case included
- 9V battery
- Instruction manual
- Certificate of calibration
- Cone adapter
- Funnel adapter
- Contact adapter
- Master wheel 3.94" [100mm]
- Reflective tape 0.59" x 20.67" [15mm x 525mm]

Specifications

Rotation speed (non-contact):	6.0 to 99999 RPM (rev/min)	Resolution:	6.0 to 9999.9 RPM : 0.1 RPM 10000 to 99999 RPM : 1 RPM
Rotation speed (contact):	6.0 to 25000 (rev/min)	Response time:	1 second
Surface speed (contact):	0.6 to 2500.0 M/M (m/min) 0.7 to 2734.0 Y/M (yard/min) 23.6 to 98425 I/M (inch/min) 2.0 to 8202.1 F/M (feet/min)	Operating temperature:	32°F to +122°F [+0°C to +50°C]
Length (contact):	0.1 to 9999.9 m (meter) 0.1 to 10936 YD (yard) 0.3 32808 FT (feet)	Auto power off:	Automatically after approx. 30 second
Accuracy:	6.0 to 5999.9 RPM: $\pm 0.01\%$ and ± 1 digit 5999.9 to 99999 RPM: $\pm 0.05\%$ & ± 1 digit Surface speed, length 0.5% and ± 1 digit	Battery type:	9V (006P, IEC6F22, NEDA1604)
Detection:	Laser diode	Dimensions:	5.79" H x 1.93" W x 1.14" D [147mm x 49mm x 29mm]
		Weight:	3.4oz [95g] (without battery) Contact adaptor: 1.8oz [50g]
		Total number of revolutions:	1 to 99999 REV (rev)
		Measuring distance:	40" [100 cm]
		Warranty:	1 year
		Agency approvals:	RoHS, CE Compliant

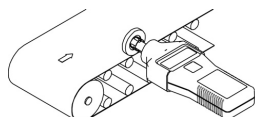
Models Description

9300-HTK Hand Tachometer Kit: includes Hand Tachometer, 9V battery, instruction manual, certificate of calibration, cone adapter, funnel adapter, contact adapter, master wheel, reflective tape, and carrying case

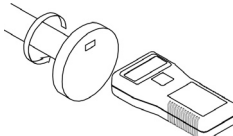
* Item in bold is normally in factory stock.

Applications

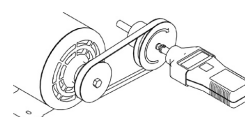
Conveyor line speed



Speed of rotating objects



Check motor speeds





(Images are 50% actual size)



9930-IRT



9952-IRT



9975-IRT

Description

The Redington Model 99 line of non-contact thermometers use the latest infrared measuring technologies housed in rugged and ergonomic designs. These high performance measuring instruments feature laser sighting, backlight LCD displays, and are available with some of the highest distance to spot ratios in the industry. With ultra low power consumption and available data storage, the Model 99 line provides extended measuring reliability for a variety of applications.

Features

- Rugged and ergonomic design
- Ultra low power consumption mode
- Backlit LCD display
- °C or °F selectable
- Laser sighting ON/OFF
- 9V battery included
- CE & RoHS Compliant

Options

- Adjustable emissivity from 0.1 to 1.00 in 0.01 steps
- High distance to spot ratios
- Electronic trigger lock
- Temperature data storage
- Available alarms

Models Description

9930-IRT	Standard non-contact IRT kit - includes 9V battery, instruction manual, and certificate of calibration
9952-IRT	Professional non-contact IRT kit - includes 9V battery, instruction manual, certificate of calibration, and reinforced holster case
9975-IRT	High Performance HDS non-contact IRT kit - includes 9V battery, instruction manual, certificate of calibration, & heavy-duty carrying case

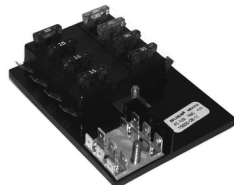
* All Items in bold are normally in factory stock.

Applications

Semiconductor Manufacturing



Circuit Terminal Testing



Electrical Troubleshooting



HVAC Inspection



Auto Repair & Maintenance

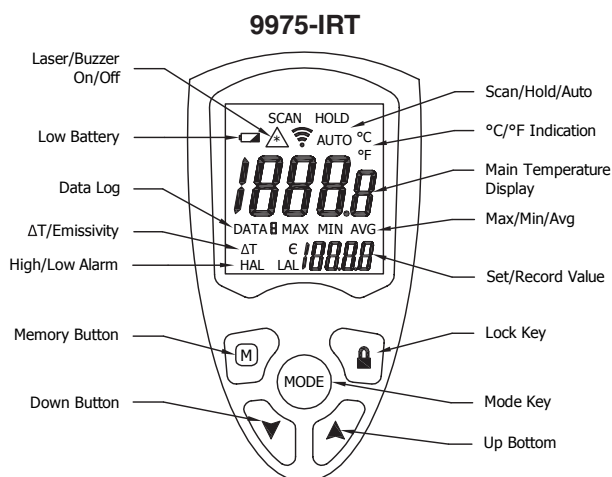
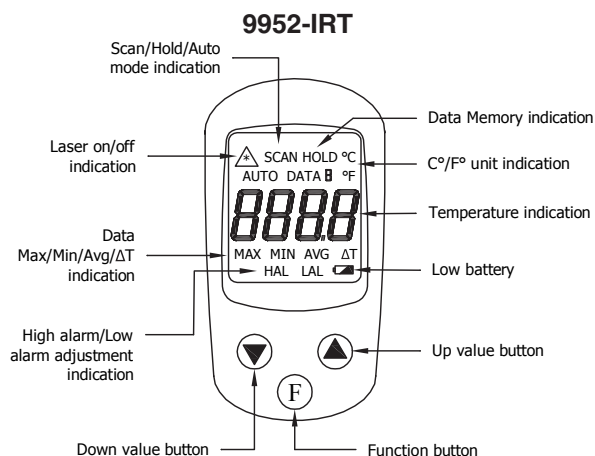
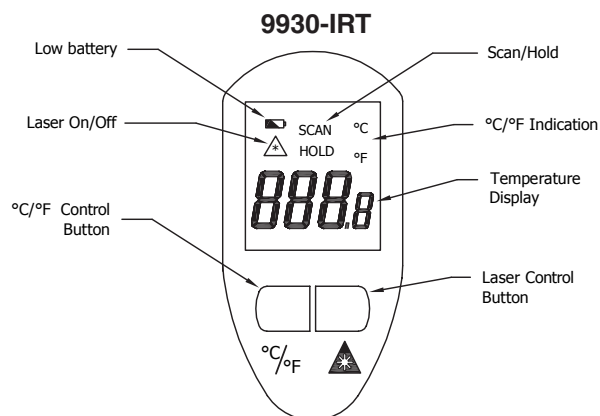




Specifications

SPECIFICATIONS	9930-IRT	9952-IRT	9975-IRT
Distance/Spot Ratio	8:1	12:1	50:1
Temperature Range	-4 ~ 605°F (-20 ~ 320°C)	-25 ~ 999°F (-32 ~ 535°C)	-25.6 ~ 2373°F (-32 ~ 1300°C)
Accuracy (Assumes Operation Ambient Temperature of 25°C/77°F)	±2% of reading or ±3°F whichever is greater	±5°F (±3°C) From -25 ~ -4°F (-32 ~ -20°C) ±3°F (±2°C) From -4 ~ 212°F (-20 ~ 100°C) ±2% From 212 ~ 999°F (100 ~ 535°C)	±5°F (±3°C) -25.6 ~ -4°F (-32 ~ -20°C) ±3°F (±2°C) -4 ~ 212°F (-20 ~ 100°C) Above 212°F (100 °C): ±2%
Thermopile	5~14μm	5~14μm	8~14μm
Repeatability	±2°F (±1°C)	±2°F (±1°C)	±2°F (±1°C)
Resolution	0.5°F (0.5°C)	0.1°F (0.1°C)	0.1°F OR 0.1°C (Above 2000°F: 1°F)
Response Time	500ms	500ms	500ms
Operation Temp	0~50°C (32~122°F), 10~90%RH	0~50°C (32~122°F), 10~90%RH	0~50°C (32~122°F), 10~90%RH
Auto Power Off	Automatically after approx. 6sec	Automatically after approx. 6sec	Automatically after approx. 6sec
Emissivity	Fixed at 0.95	0.95	Adjustable 0.1~1.0
Dimensions	5.9" x 5.2" x 1.8" (150x133x45mm)	6.7" x 5.2" x 1.8" (170mm x 133mm x 45mm)	7.9" x 6.5" x 2.0" (200 x 166 x 51mm)
Weight (with Battery)	5.44 oz (169g)	7.12 oz (222g)	9.02 oz (281g)
°F/°C Switchable	YES	YES	YES
Backlight	YES	YES	YES
Laser Sight Switchable	YES	YES	YES
Max/Min/Avg./ΔT	NO	YES	YES
Auto-measuring	NO	YES	YES
10 Point Memory	NO	YES	YES
Audio Alarm	NO	YES	YES
Tripod Mount	NO	NO	YES
Dual Display	NO	NO	YES

LCD Display





Add Model



Add/Subtract Model

Description

The Redington Models E2 & E3 offer an electronic version of the popular Hand Tally counter and are available with a choice of Add only or Add/Subtract models. Counts are input using large positive action buttons. The Add model has a single count button and the Add/Subtract model has two separate count buttons. The "+" button (green) will add a count to the total and the "-" button (red) will subtract a count from the total. When activated, an audible "beeper" sounds every count to verify that a count has been registered. All electronic components provides a long life counter with no moving parts to wear out. The counter is manufactured from impact-resistant plastic, combining lightweight with outstanding durability.

Features

- Add or Add/Subtract models
- Beep at every count with the option of switching the sound off for silent operation
- Cannot accidentally reset or turn off; On/Off/Reset button must be held down for 3 seconds to reset
- Long life battery (replaceable) - typically 250 days without sound
- Large LCD display
- No mechanical parts to wear out
- Large rubber buttons for comfort of use
- Ergonomically designed for ease of use
- Carrying cord - 9.0" [229mm]
- Light weight

Specifications

Display: 4 digit LCD 0.35" [9mm] high
Battery Operating Life: 250 days (without sound)
Reset: Push button

Operating Temperature: +32°F to +122°F [0°C to +50°C]
Weight: 0.7 oz (20g)
Color: Black case with blue buttons (Add Only) or green and red buttons (Add/Subtract)

Models Description

E2-1804 Electronic Hand Tally (Add only)
E3-1804 Electronic Hand Tally (Add/Subtract)

* All Items are normally in factory stock.

Dimensions

2.4" L x 1.4" W x 0.6" D [60mm x 35mm x 15mm]

Operating Instructions

- Press On/Off/Reset button to power ON the unit
- Add model - Press count button to increment count
- Add/Subtract model - Press the "+" button to Add, Press the "-" button to Subtract
- To reset counter press the On/Off/Reset button for 3 seconds
- To switch the sound Off/On at any time, hold the count button down for 3 seconds
- To turn Off, press the On/Off/Reset for 3 seconds when counter display is at "0"

Battery Replacement

When the display gets dim, replace the battery.
Use 1 type AG10 1.5 V or equivalent
Observe polarity (±) during replacement

Applications

Inventory



Attendance



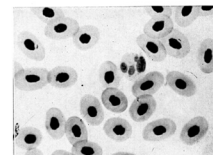
Traffic



Food portions



Blood cells





Description

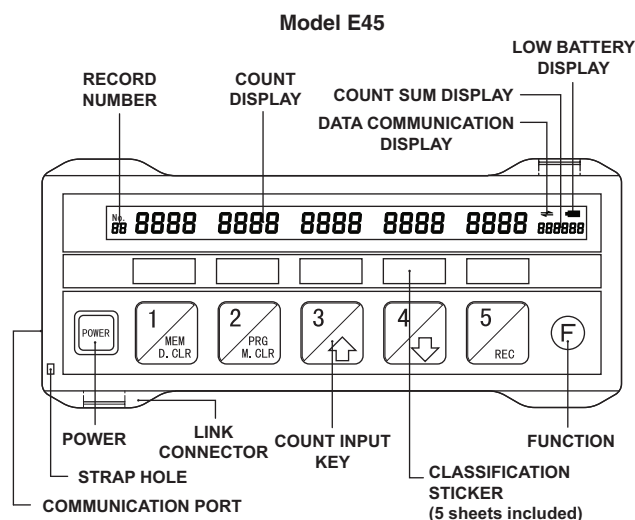
The Redington Model E45-1804 provides the user with an economical upgrade from the traditional mechanical modular tally counters and at a lower cost. A single module displays five 4-digit LCD's counters, internal 5-digits (99999), total counter is 6-digits (999999), and provides RS-232C serial communications. All of the stored data, maximum of 99 records, (count data, sum data) on the E45-1804 can be read and viewed on a PC through serial communications. The 4 least significant digits of the counter can be viewed on the display. To view all 5 digits, please use the communications feature of the unit to recall the complete internal counter data. Free software is available from our web site, redingtoncounters.com. The Model E45-1804 is self powered by 4 AAA batteries, which makes it ideal for field use. It has non-volatile memory. During battery replacement the memory of stored data will be retained. After the batteries are replaced the original data will be displayed.

Features

- Communications functions to PC; convenient for totaling and analyzing
- Battery life - 200 hours (low battery indicator)
- 7 segment LCD (digit size: 0.2" [5mm] height)
- Memory storage for 99 data records
- Internal 5-digit counter and 6-digit total counter
- Strap hole for lanyard
- Classification sticker
- Light weight (1/3 of a traditional metal type)
- Excellent tactile feel buttons
- Modular construction allows connecting multiple counters

Specifications

Display:	LCD 4 digits height 0.2" [5mm] counters (x5) 6 digits total counter & record number
Reset:	Push button
Memory:	Maximum of 99 records
Dimensions:	2.44" (H) x 5.5" (W) x 0.83" (D) [62 (H) x 140 (W) x 21 (D) mm]
Accessories:	Instruction manual, batteries (4), stickers (5)
Approvals:	CE compliant
Weight:	5oz [130g] (batteries included)
Data Output:	RS-232 PC Serial Interface
Battery Operating Life:	200 hours, power off when not in use (4) AAA (1.5) alkaline type batteries
Software/Operating Instructions:	Download from Redington web site
Communications Cable:	Use any market available RS 232 cable (straight) to connect to the PC and a D-SUB 9 pin (female) connector for connection to the E45-1804
Data Output:	RS-232 PC Serial Interface
Operating Temperature:	14°F to 122°F [-10°C to 50°C] 85% RH max.



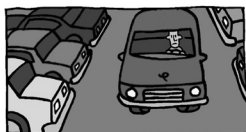
Models Description

E45-1804 Electronic Multi Tally (x5 LCD) with serial communications

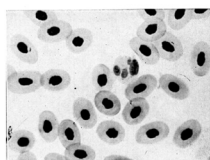
* Item is normally in factory stock.

Applications

Traffic



Lab Counter



Inventory



Attendance





Description

The Redington Model E5 is an electronic hand tally with a 4.5-digit main display and two 4-digit sub-displays. The tally has 4 selectable modes that are user settable by internal DIP switch position. Depending on the DIP switch setting specific modes of operation can be chosen. The unit has a built in buzzer that can be enabled or disabled by pressing and holding the Reset button.

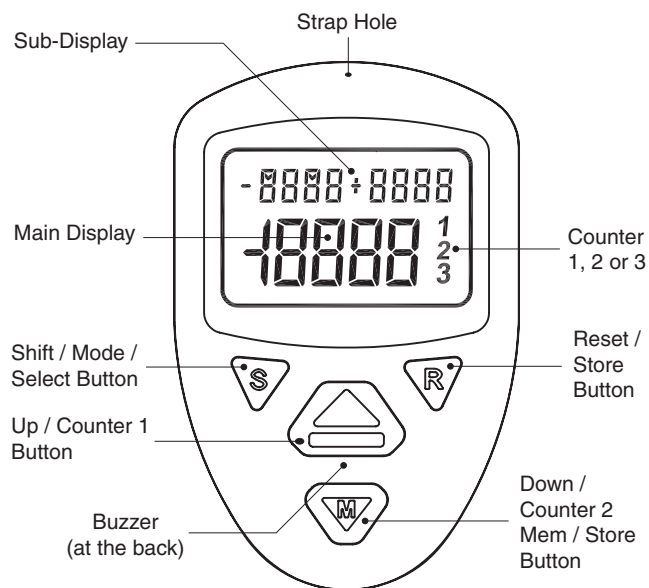
Operating Modes:

- 1). Simple Hand Tally- Add & subtract count, reset and memory storage.
- 2). Two counter Tally- Two tally's, reset and selectable add or subtract count with either tally.
- 3). Three rotating Tally counters- Three independent tally counters. These counters can be rotated or shifted in a clockwise manner.
- 4). Multiple memory Tally- This is an add tally with a multiple number of memories for storing count value. It has two operating modes, count mode and memory mode. The user can transfer the displayed count to a memory. Each time the user stores count values the memory number increments.

Physical Nomenclature:

- 4 function buttons
- Large LCD display
- Button type battery operated; use type CR2032 or equivalent. Observe polarity (+/-) during replacement.

Model E5-1804



Mode Selection:

An internal DIP Switch is available to select four different modes. Depending on the setting of a 2-bit DIP Switch a specific mode can be selected. The E5-1804 is shipped from the factory in Mode 1. The table below shows the corresponding DIP Switch configuration:

To change the mode:

1. First remove the internal battery
2. Set the internal DIP switches to the new mode
3. Reinstall the battery

MODE	SWITCH 1	SWITCH 2
Mode 1	ON	ON
Mode 2	ON	OFF
Mode 3	OFF	ON
Mode 4	OFF	OFF

The buttons assigned to each function per specific mode is given below:

MODE				
Mode 1 Simple Tally	Up	Down	Reset / Store	No Function
Mode 2 2 Counter Tally	Count UP (Counter 1)	Count UP (Counter 2)	Reset	Select (+/-)
Mode 3 3 Rotating Counters	Up	Down	Reset	Shift
Mode 4 Multiple Memory	Up	Mem / Store	Reset	Mode



Features

- User friendly four programmable modes
- Add, add/subtract, store memory, and rotate or shift display
- 1 main and 2 sub displays
- Lightweight
- No mechanical parts to wear out
- Replaceable battery
- Beep at every count that can be enabled or disabled by pressing and holding the reset button
- Includes 22.4" 570mm carrying cord
- Large LCD screen; display is always on

Specifications

Display:

Main display: LCD 4.5 digits (19999)*; 0.39" [10mm]
Sub displays: 4 digits (9999); 0.19" [5mm]

Reset: Push button

Color: Black

Weight: 1.4 oz [40g] including battery

* Take note that 4.5 digits (-9999 ~ 19999) is only applicable in Mode 4. Up to 4 digits are applicable in Modes 1, 2, & 3.

Dimensions:

3.1" H x 2.0" W x 0.7" D [78 H x 51 W x 17 D mm]

Battery operating life: 3V CR2032; approx. 1.5 years

Operating temperature: 41°F to 108°F [5°C to 40°C]

Storage temperature: 13°F to 146°F [-10°C to 60°C]

Humidity: 85% RH (non-condensing)

Default mode: Mode 1: simple tally

Models Description

E5-1804 Electronic Hand Tally; 3 displays; add/subtract; store count and memory

* Item is normally in factory stock.

Operating Instructions

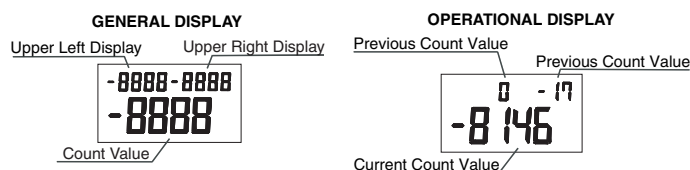
MODE 1

Mode 1 is a simple add/subtract counter with two temporary memory displays.

Buttons Active:

TYPE				
Type 1 Up/Down Counter	Up	Down	Reset	No Function

Display Area:



Count Operation:

In this mode you can count up from 0 to 9999 by pressing the button. You can also count down to -9999 by pressing the button. Each actuation of the button will increment the count values by 1, likewise, pressing the button will decrement the count value by 1. If the count value reaches the maximum and minimum limit the next display will be an error message (Err). Pressing the button will display the current count value to the upper left display and reset the count value on the main display.

Reset Operation:

This mode has 2 temporary memories that store the last 2 count values on the upper right and upper left display. When you press the button the main display will be reset to 0 and the value prior to reset will be displayed on the upper left display, while the value on the upper left display will be shifted to the upper right display. Every time the button is pressed the last count values will be shifted again from the main display, to the upper left display, and the upper left display to the upper right.

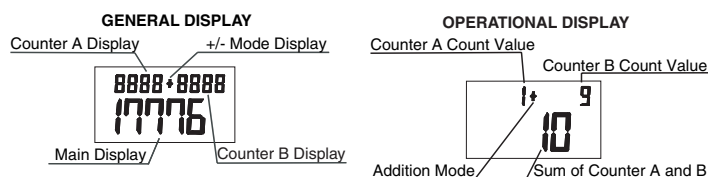
MODE 2

Mode 2 is a two counter tally with selectable add/subtract feature.

Buttons Active:

TYPE				
Type 2 2 Counter Tally	UP (Counter A)	UP (Counter B)	Reset	Select (+/-)

Display Area:



Count Operation:

In this program the user has two counters **A** and **B** available at any time. These counters can only count in an additive direction by pressing the button for counter **A** and button for counter **B**. The count value of counter **A** is located on the upper left display and the count value of counter **B** is located on the upper right.

Reset Operation:

When the maximum value of any counter is reached, an error (Err) message will be displayed. When the button is pressed both counters **A** and **B** will be reset to 0.

Sum and Difference Operation:

This mode also performs a sum or difference of counter **A** and **B**. The sign between the upper left and upper right display determines whether the main display is a sum or difference of both counters. If a - sign is displayed, the main display is the difference of counter **A** and **B**. If a + sign is displayed the main display is the sum of both counters. To change from addition to subtraction or vice versa, press the button.

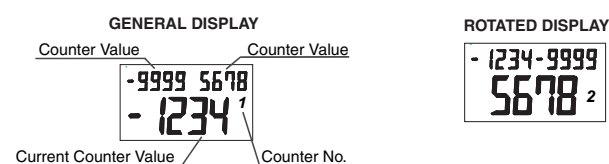
MODE 3

Mode 3 is an add/subtract counter with three independent counters. These counters can be rotated or shifted in a clockwise manner.

Buttons Active:

TYPE				
Type 3 3 Up/Down Counter	Up	Down	Reset	Shift

Display Area:



**Count Operation:**

In this mode you can program to count up/add from 0 to 19999 by pressing the button. You can also count down/subtract to -9999 by pressing the button. Each press of the button will increment the count value by 1, likewise, pressing the button will decrement the count value by 1. If the count value reaches the maximum and minimum limit the next display will be an error (Err) message. Pressing the button will reset the current count value to 0. To identify which counter is the current display a counter number is display on the right side of the main display.

Rotate/Shift Operation:

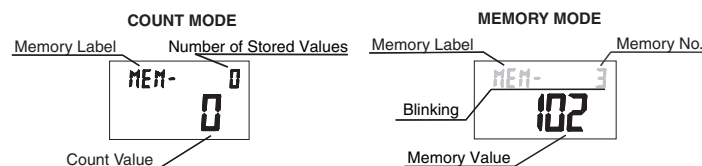
This program has 3 independent counters. To rotate/shift these counter press the button. The counter number of the current display is shown on the right side of the main display. Its corresponding count value is also displayed on the main display. The values of the other two counters are also shown on the upper right and upper left portion of the display. These values cannot be changed unless they are selected. Pressing the button will only reset the current counter value. To reset the other counters you must rotate/shift and reset every single counter until all three of them are reset to 0.

MODE 4

Mode 4 is an add counter with 59 memory locations for storing count values. It has two operating modes, count and memory mode.

Buttons Active:

TYPE				
Type 4 Counter with Memory	Up Scroll Up	MEM Scroll Down	Reset	Shift

Display Area:**Count Mode:**

In the count mode you can count from 0 to 19999 by pressing the button. You can store count values by pressing the button. Every time you store count values the memory number increments. This memory number is located on the upper right portion of the display. Pressing the button will reset the count value to 0 but the memory will be retained. To go to the memory press the button. The count value, before changing to memory mode, will be retained and displayed again when you go back to the count mode.

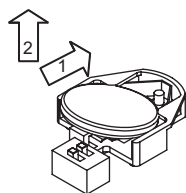
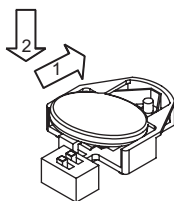
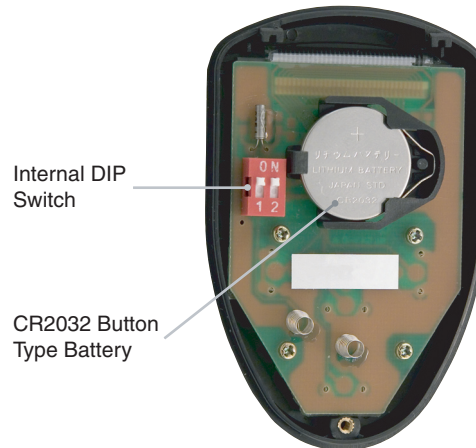
Memory Mode:

In the memory mode, you can view the stored values in the memory. Pressing the button in the count mode will change the operation to memory mode. The blinking memory message (MEM) and number signifies that you are in the memory mode. The last value stored in memory will be the first data shown in the display. While in this mode, you can browse the stored values by pressing the button. The value stored in memory will be displayed on the main display and its corresponding memory number will be shown on the upper right area. To delete the memory, press both the and buttons at the same time. Upon deleting the memory, the main display will show dashes (- - -) and the memory number must be reset to 0. To go back to count mode press the button.

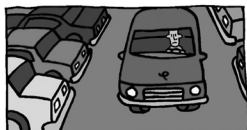
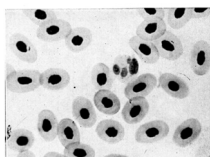
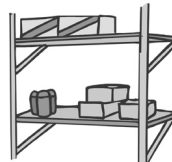
Battery Replacement

When the display becomes faint or disappears, it indicates a low battery condition. Replace the battery when this occurs.

1. Remove the screw at the lower back of the unit and remove the back cover by lifting it.
2. Slide the battery from the left side to the right (1) and lift the battery from the battery holder (2). (See "removing" diagram below)
3. To install a new battery, insert the battery from left to right (1) and push down the battery until it locks on the battery holder (2). (See "installing" diagram below)
Make sure that the battery is installed properly according to the indicated polarity on the battery holder.

REMOVING**INSTALLING****Back View (Internal)**

- Take note that this counter does not have a memory. All stored data will be erased when battery becomes low or changed.
- The unit is shipped with a battery installed and battery life may be shorter than the indicated specification. However, if a new battery is installed, battery life will be according to indicated specification.
- Remove the battery when the device will not be used for a long period of time.

Applications**Traffic****Lab Counter****Inventory****Attendance**