

Fast & Simple to Use  
Online Configurator

Patent Pending Pinch  
Drive Design

Clean Room Certified  
Class 100

Industry-Best  
Product Transfers



# 1100 SERIES CONVEYORS

The Industry's Smallest Conveyor  
Designed to Fit in the Tightest Spaces!



# 1100 SERIES

## 1100 Series Conveyors are best for:

- Small or Light Weight Product Handling
- Small Part Transfers
- Tray Handling
- Pill Package Handling
- Package Labeling
- Pharmaceutical Applications
- Life Science Applications
- Medical Applications

## Sizes & Measurements

- Widths: 1.75" (44mm), 3.75" (95mm), 6" (152mm), 8" (203mm), & 10" (254mm)
- Lengths: 10.63" (270mm) to 72" (1,829mm) in 1/8" (3mm) increments

## Belt Types

3 FDA Approved Belt Options:

- Low Friction
- Medium Friction
- High Friction

## Loads & Speeds

- Loads up to 15 lbs (6.8 kg)
- Speeds up to 80 ft/min (21 m/min)

## Guiding

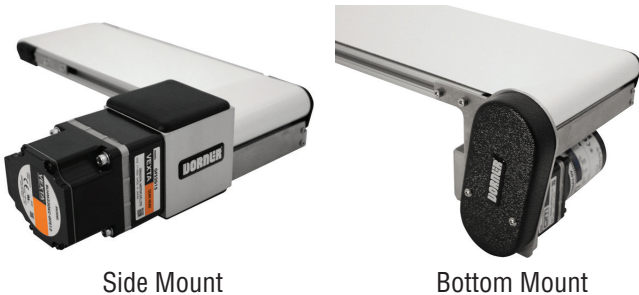
UHMW Guides

- 1" (25mm)
- 2" (51mm)



## Drives

Flat Belt End Drives



Side Mount

Bottom Mount

Flat Belt Mid Drives



Type 1 Mount

Type 2 Mount



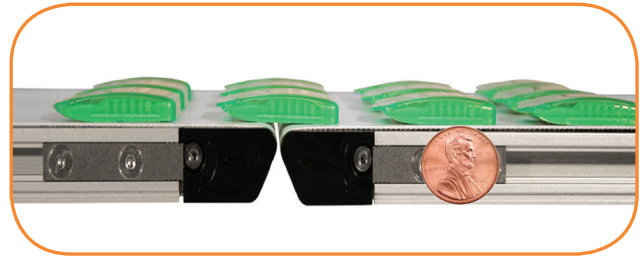
## Small Part Transfers

- Flush Frame allows for side transfers
- Optional 5/16" nose bar on one or both ends



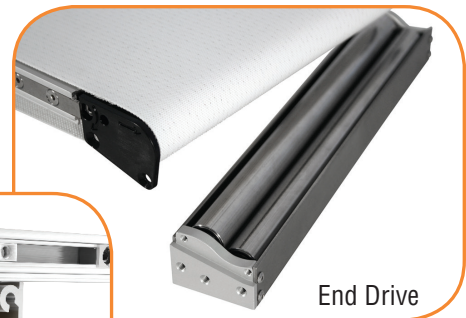
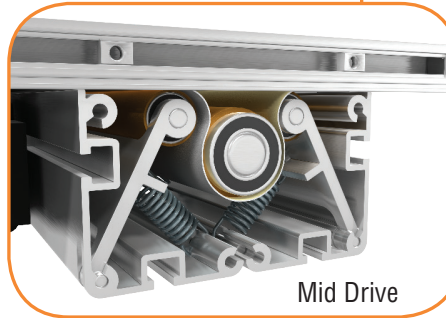
## Miniature Frame Design

- 3/4" frame height
- 5/8" or 5/16" diameter idler pulleys
- Optimal size for handling and transferring of small parts
- T-Slot for fast mounting of accessories
- Flush edge design to fit into tight spaces
- Cam belt tracking conveyor extends only 3/4" beyond frame



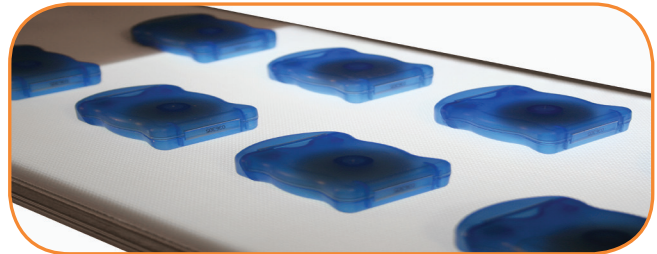
## Pinch Drive Design (Patent Pending)

- Low belt tension virtually eliminates belt stretch providing maintenance free operation
- Belt is tracked continuously with unique frame design, cams, and pinch drive for consistent performance
- Drive is reversible, providing maximum flexibility in applications
- Two halve design with one fastener per side allows cover to pivot for fast belt change
- T-Slot for flexible mounting
- Spring tensions belt around drive pulley for 180° of wrap
- 1.25" lagged urethane drive spindle



## Backlit Capability

- Backlit conveyor with an LED light is ideal for inspection and quality control
- Provides a contrast between the product and conveyor belt for both visual inspection and vision system interface
- Parts can be stopped directly over the lighted section or continue through uninterrupted
- Unique design allows access to LED panel without removal of the belt for ease of use and light color changes



## The Benefits of a Dorner 1100 Series Conveyor

### Industry Ready

- Clean Room Class 100 Certified for medical and pharmaceutical applications
- T-Slot for ease and flexibility in mounting automation components or accessories
- FDA Approved Belting

### Time Saving

- Dorner's online configuration engineers simple or complex conveyors to meet your needs in minutes
- The industry leading tool delivers a complete 3D CAD Assembly model for instant validation of fit
- Dorner provides the industry's fastest deliveries

At Dorner we make it our mission to provide you with a system that you can depend on to move your product from point A to point B with precision and speed. It's that commitment and history of proven excellence that has made the Dorner Brand a recognized leader in precision conveyors for nearly 50 years. With our complete line of customizable conveyor systems we have the perfect solution for you!



## 1X Series

The 1X Series Line is designed for small part handling and transfers where space is a premium.

### 1X Series Family:

- Flat Belt
- Aluminum Frame
- Widths to 10"
- Loads to 15 lbs
- Speeds up to 80 fpm



## 2X Series

The 2X Series Line is engineered for small to medium sized parts, precision applications and flexible layouts.

### 2X Series Family:

- Flat Belt
- Cleated Belt
- Modular Belt
- Precision Move
- SmartFlex®
- Aluminum Frame
- Widths to 24"
- Loads to 200 lbs
- Speeds up to 400 fpm
- Curves
- Z-Frame Elevators



## 3X Series

The 3X Series Line is designed for medium to heavy sized parts, precision applications, bulk handling and flexible layouts.

### 3X Series Family:

- Flat Belt
- Cleated Belt
- Modular Belt
- Flexible Chain
- Precision Move
- Aluminum Frame
- Widths to 60"
- Loads to 1000 lbs
- Speeds up to 600 fpm
- Curves
- Z-Frame Elevators



## 7X Series

The 7X Series Stainless Steel Line is engineered for small to heavy product requiring various levels of sanitary design and flexible layouts.

### 7X Series Family:

- AquaPruf® + AquaGard®
- Flat Belt
- Cleated Belt
- Modular Belt
- Flexible Chain
- Vertical Belt Technology
- Stainless Steel Frame
- Widths to 52"
- Loads to 750 lbs
- Speeds up to 400 fpm
- Curves
- Z-Frame Elevators

### NEED SOMETHING DIFFERENT?

DORNER'S **ENGINEERED SOLUTIONS GROUP** PROVIDES EXACTLY WHAT YOU NEED FOR YOUR SPECIFIC APPLICATION. FROM MODIFIED STANDARD CONVEYORS TO COMPLETE CUSTOM DESIGNS.

### LOOKING FOR AFTER SALE SUPPORT?

DORNER'S **SERVICES TEAM** PROVIDES COMPLETE SUPPORT FROM REPLACEMENT PARTS TO INSTALLATION AND MAINTENANCE SERVICES.



DORNER MFG. CORP.  
PO Box 20 • 975 Cottonwood Ave.  
Hartland, WI 53029 USA

INSIDE THE USA  
TEL: 800.397.8664  
FAX: 800.369.2440

OUTSIDE THE USA  
TEL: 262.367.7600  
FAX: 262.367.5827

[www.dorner.com](http://www.dorner.com)  
[info@dorner.com](mailto:info@dorner.com)



© Dorner Mfg. Corp. 2017. All Rights Reserved. Made in the U.S.A. 851-753 Rev C 4M - JBK - 0916

Courtesy of Steven Engineering, Inc - (800) 258-9200 - [sales@steveneng.com](mailto:sales@steveneng.com) - [www.stevenengineering.com](http://www.stevenengineering.com)