

INTEGRATED SERVO MOTOR/DRIVE/CONTROLLER

The ACSI is an all-in-one solution (motor/drive/controller) for cost-effective servo control. Mount to a Tolomatic (or any) electric actuator for a complete motion system. The ACSI can be controlled with simple digital I/O, analog input or robust industrial ethernet.

ACSI

DIGITAL I/O

- 24 VDC Digital I/O control for flexible easy operating modes
- Opto-isolated

ANALOG IN/OUT

- 0-10VDC or
- 4-20 mA

DUAL ETHERNET PORTS

- Supports Star, Daisy Chain and Ring Topologies



ETHERNET/IP

- AOP: Add on profile
- AOI: Add on Instructions
- DLR: Device Level Ring

PROFINET



MODBUS TCP



INPUT SUPPLY

- 10 VDC to 60 VDC
- Logic & Drive Power

M12 CONNECTORS

- Industry standard connectors

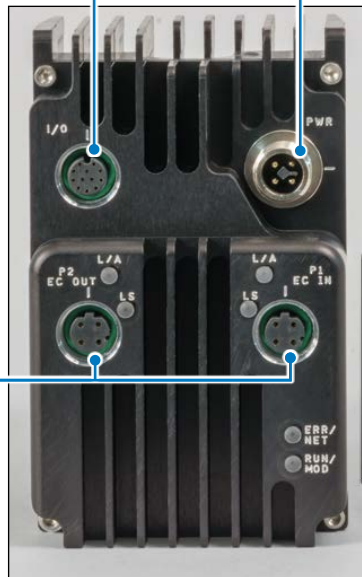
USB CONFIGURATION PORT

QUALITY TESTED

- Each ACSI is performance tested at Tolomatic before shipping
- Mounted, configured and tested on Tolomatic electric actuators

IP65

Protected against dust and low pressure water jets, limited ingress



VIBRATION TESTED

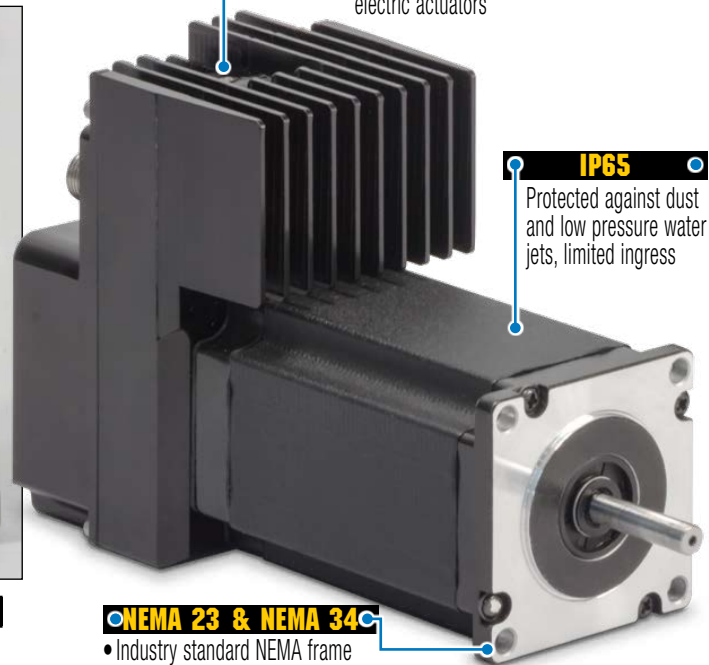
- 0-500 Hz, 2 G, 3-Axis, 1-hour

ETHERCAT

EtherCAT®

NEMA 23 & NEMA 34

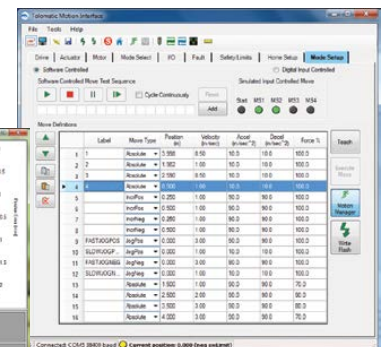
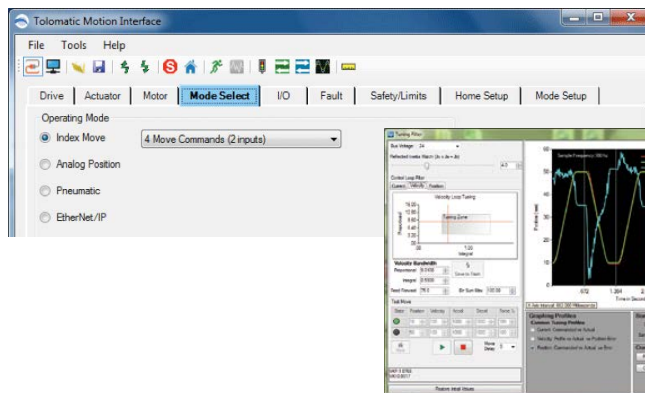
- Industry standard NEMA frame sizes



Easy to Use Operating Modes & Configuration Software

OPERATING MODES

- Index position via digital I/O
- Pneumatic Logic
- Analog Position
- Ethernet
 - EtherNet/IP
 - PROFINET
 - Modbus TCP
 - EtherCAT
- Supports rotary actuator: position and velocity moves



Available Options:

Cables

3m, 5m or 10m lengths

Planetary Gearboxes

Available ratios - 3:1, 5:1, 10:1

Power Supply

48VDC; 5Amp or 10Amp

INTEGRATED SERVO MOTOR/DRIVE/CONTROLLER

Specifications

	NEMA 23		NEMA 34	
	Basic	Ethernet	Basic	Ethernet
Continuous Torque	0.61 N-m	0.55 N-m	1.53 N-m	1.35 N-m
Peak Torque	1.56 N-m		2.82 N-m	
Max. Continuous Current	11.46 Amps	9.6 Amps	12.7 Amps	11.37 Amps
Max. Peak Current	20 Amps		20 Amps	
Rated Speed	3500 RPM		1750 RPM	
Max. Speed	3850 RPM		2050 RPM	
Rotor Inertia	0.220 kg-cm ²		1.600 kg-cm ²	
Unit Weight	1.72 kg		3.27 kg	
Motor Poles	8			
Max Case Temp	85°C			
Encoder	Differential 1024 lines/rev (4096 counts per rev)			

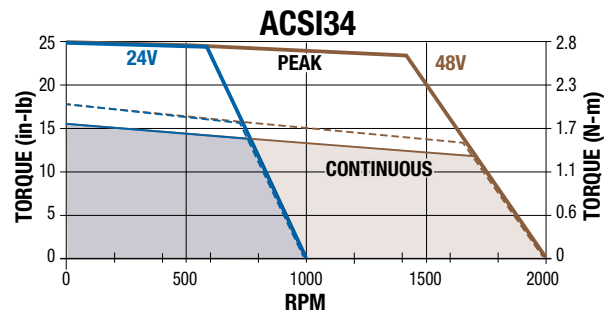
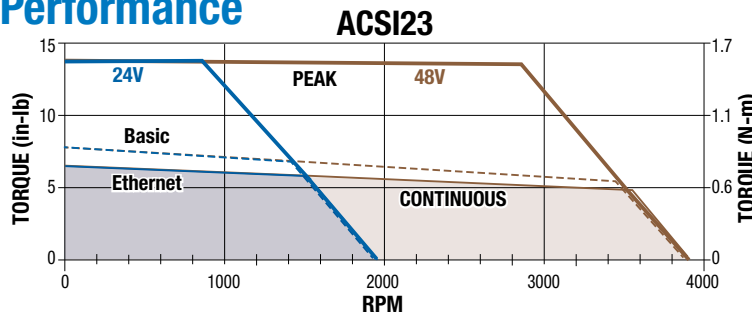
ACSI

23 Frame

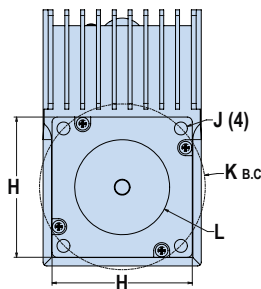
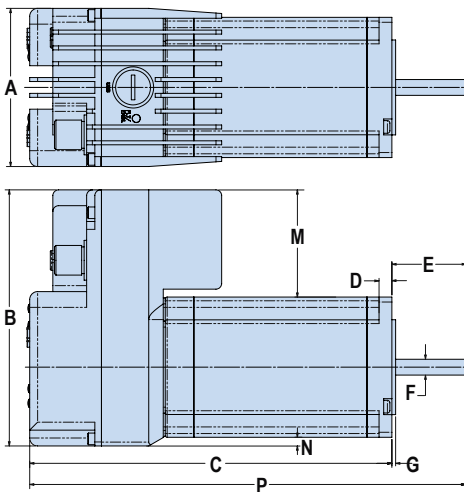
34 Frame



Performance



Dimensions



	23	34
A	63.5	63.5
B	102.8	113.9
C	145.4	150.4
D	5.2	10.0
E	22.86	31.8
F	6.350	12.700
G	1.50	1.60
H	56.3	85.8
J	5.2	5.5
K	66.68	98.43
L	38.10	73.03
M	43.1	28.3
N	3.5	0.0
P	168.26	182.20

Dimensions in millimeters

	23	34
A	2.50	2.50
B	4.05	4.49
C	5.73	5.92
D	0.20	0.39
E	0.900	1.25
F	0.2500	0.5000
G	0.059	0.063
H	2.22	3.38
J	0.20	0.22
K	02.625	03.875
L	01.500	02.875
M	1.70	1.11
N	0.14	0.00
P	6.63	7.17

Dimensions in inches



USA
3800 County Road 116
Hamel, MN 55340, USA
Phone: (763) 478-8000
Fax: (763) 478-8080
Toll-Free: **1-800-328-2174**
sales@tolomatic.com
www.tolomatic.com

EUROPE
Tolomatic Europe GmbH
Zeilweg 42
60439 Frankfurt am Main
Germany
Phone: +49 69-2045-7837
EuropeSales@tolomatic.com

CHINA
Tolomatic Automation Products (Suzhou) Co. Ltd.
(ServoWeld® inquiries only)
No. 60 Chuangye Street, Building 2
Huqiu District, SND Suzhou
Jiangsu 215011 - P.R. China
Phone: +86 (512) 6750-8506
Fax: +86 (512) 6750-8507
ServoWeldChina@tolomatic.com

All brand and product names are trademarks or registered trademarks of their respective owners. Information in this document is believed accurate at time of printing. However, Tolomatic assumes no responsibility for its use or for any errors that may appear in



this document. Tolomatic reserves the right to change the design or operation of the equipment described herein and any associated motion products without notice. Information in this document is subject to change without notice.

Visit www.tolomatic.com for the most up-to-date technical information