

RSX096P PRESS MODEL

Tolomatic...
EXCELLENCE IN MOTION®
...**MAXIMUM
DURABILITY**

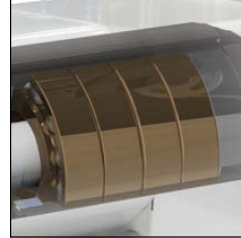
● **ENDURANCE TECHNOLOGY** ●SM

Endurance Technology features are designed for maximum durability to provide extended service life.

The RSX096P press actuator expands the extend force capability to 40,000 lbf (178 kN) making it well suited for applications such as pressing, riveting, clinching and many others. The RSX096P press model has all the features of the standard RSX on pages 4 & 5 plus oversized tie rods, a bearing system optimized for high force extend, and a high strength steel front flange.

● **OPTIMIZED BEARING SYSTEM** ●

- Angular contact bearing system is designed to handle high axial forces and loads common to press applications



● **OVERSIZED TIE RODS** ●

- Increased system strength to handle up to 40,000 lbf (377.9 kN) in extend; 15,000 lbf (66.7 kN) in retract

● **HIGH STRENGTH STEEL FRONT FLANGE** ●

- Durability to meet the demands of high force and stress applications

**FAST DELIVERY
BUILT-TO-ORDER**