

! Contact our sales office for delivery dates and prices as this is a special model.

Specialized Product

Point to Group
P.G. information

Pulse Blowing Valve

AXTS040□-□□-X2

Features

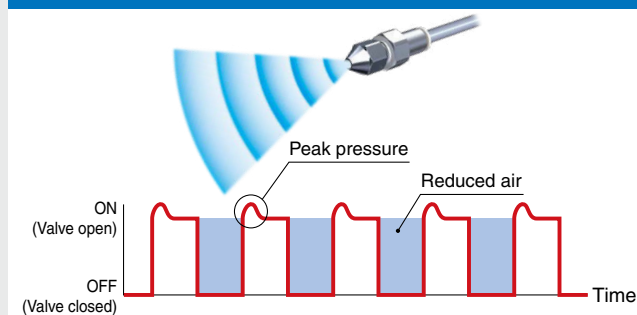
- The peak pressure of repeatedly colliding air permits efficient blowing.

Air consumption:

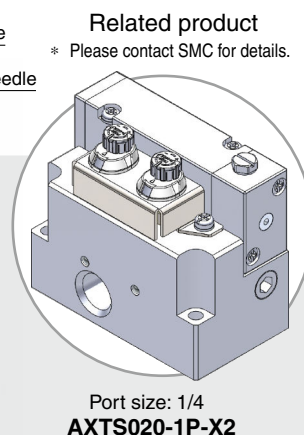
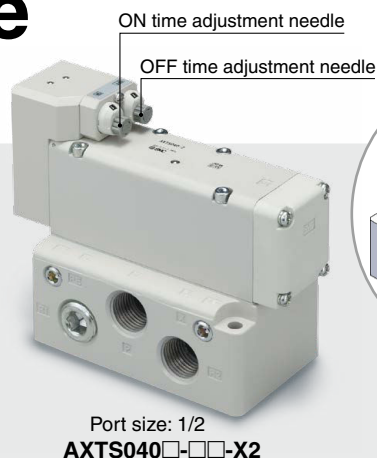
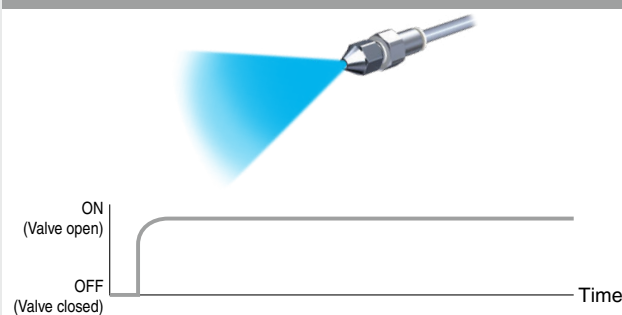
Reduced by 50%*1 or more

*1 When ON time to OFF time is 1 to 1 (Duty ratio 0.5)

Pulse blow

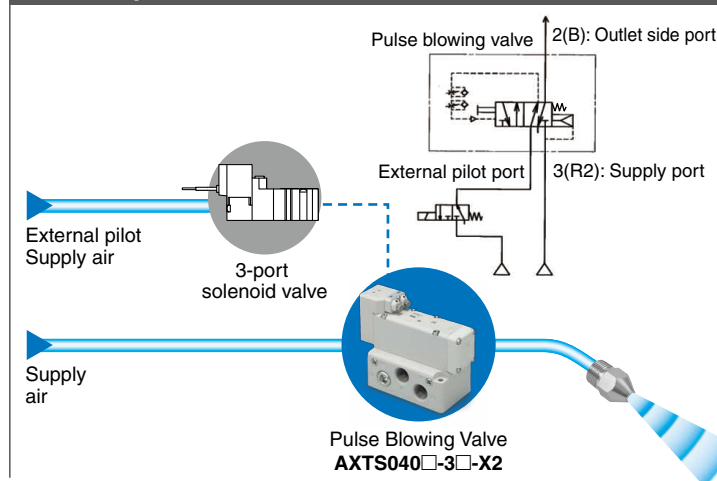


Continuous blow

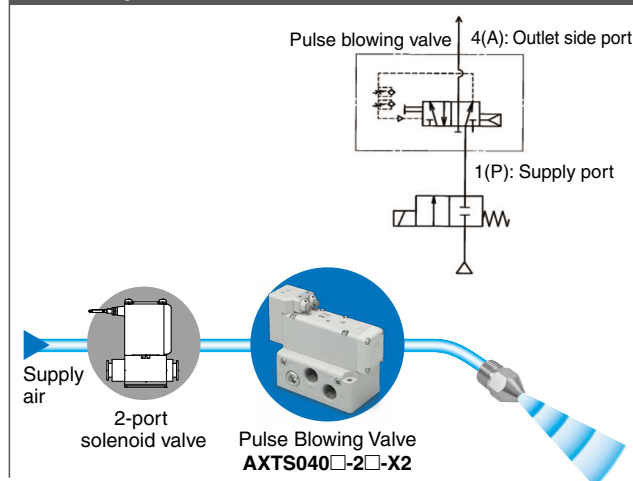


■ **Control for pulse generation is not required.** Pulse blow can be used by simply supplying air.

External pilot



Internal pilot



■ **Long service life (200 million cycles or more)**

■ **Flow rate characteristics**

| Type of actuation | C [dm ³ /(s·bar)] | b | Cv |
|-------------------|------------------------------|------|-----|
| External pilot | 14 | 0.18 | 3.4 |
| Internal pilot | 12 | 0.14 | 2.9 |

■ **ON/OFF time adjustable individually**

■ **Operating pressure range: 0.2 to 1.0 MPa**



Caution

To ensure the safest possible operation of this product, please be sure to thoroughly read the "Safety Instructions" in our "Best Pneumatics" catalog before use.

SMC Corporation 4-14-1, SOTO-KANDA, CHIYODA-KU, TOKYO 101-0021, JAPAN URL: <http://www.smcworld.com>

©2018 SMC Corporation All Rights Reserved



SP178X-008E
P: WS

How to Order

AXTS 040 - 3 -X2

Body size

| | |
|-----|-----|
| 040 | 1/2 |
|-----|-----|

Thread type

| | |
|-----|------|
| Nil | Rc |
| F | G |
| N | NPT |
| T | NPTF |

Direct manual override

| | |
|-----|--------------|
| Nil | None |
| B | Locking type |

Type of actuation

| | |
|---|----------------|
| 2 | Internal pilot |
| 3 | External pilot |

Specifications

| Model | | AXTS040□-2□-X2 | AXTS040□-3□-X2 |
|---|-----------------|----------------|----------------|
| Type of actuation | | Internal pilot | External pilot |
| Valve construction | | Metal seal | |
| Fluid | | Air | |
| Operating pressure range | | 0.2 to 1.0 MPa | 0 to 1.0 MPa |
| External pilot air pressure | | — | 0.2 to 1.0 MPa |
| Frequency adjustment range | | 1 to 5 Hz | 1 to 8 Hz |
| Proof pressure | | 1.5 MPa | |
| Ambient and fluid temperatures | | -10 to 50°C | |
| Lubrication | | Not required | |
| Flow rate characteristics (IN port → OUT port) | C [dm³/(s·bar)] | 12 | 14 |
| | b | 0.14 | 0.18 |
| | Cv | 2.9 | 3.4 |

Dimensions

[mm]

Internal pilot

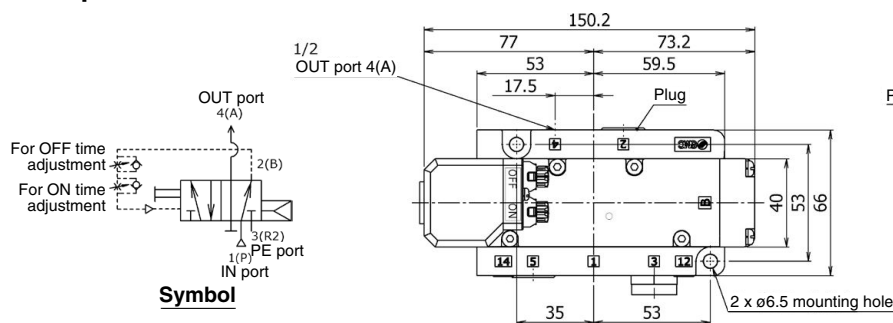
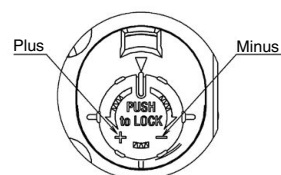
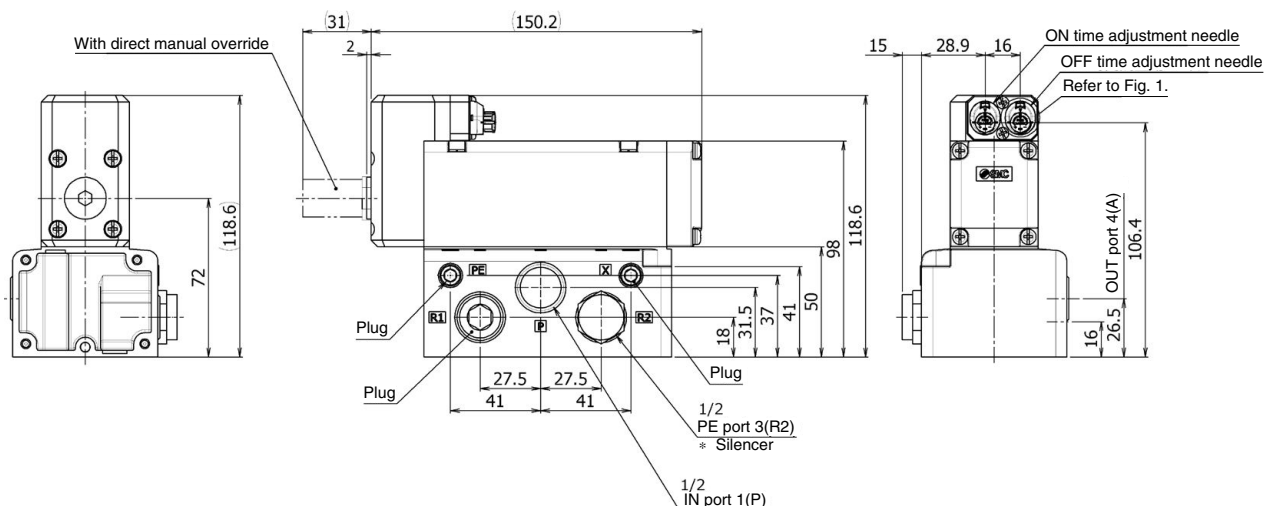


Fig. 1



* Turning the needle in the positive direction increases the frequency.
The frequency cannot be set to 5 Hz or higher.



Dimensions

[mm]

External pilot

