

# One-touch Fittings Manifold

## KM Series

RoHS

Compact piping possible.  
Manifold piping possible.  
Many varieties (40 types)  
are available.  
One-touch fittings give the  
most efficient operation.



### Model

Model	Porting		No. of Port A	Port B size	Port A size		
	Port A	Port B			ø4	ø6	ø8
KM11	One-touch fitting	One-touch fitting	6, 10	ø8	●	●	
				ø10		●	
				ø12			●
KM12	One-touch fitting	Rc female thread	6, 10	Rc 1/4	●	●	
				Rc 3/8			●
KM13	One-touch fitting	One-touch fitting	3	ø6	●		
				ø8	●	●	
				ø10		●	●
KM14	One-touch fitting	One-touch fitting R male thread	3	ø6, R 1/8	●		
				ø6, R 1/4	●		
				ø6, R 3/8	●		
				ø8, R 1/8	●	●	
				ø8, R 1/4	●	●	
				ø8, R 3/8	●	●	
				ø10, R 1/4			●
				ø10, R 3/8		●	●
KM15	One-touch fitting	One-touch fitting Rod	3	ø10, R 1/2		●	●
				ø6	●		
				ø8	●	●	
KM16	One-touch fitting	One-touch fitting	3	ø10		●	●
				ø4	●		
				ø6	●	●	

### Applicable Tubing

Tubing material	FEP, PFA, Nylon, Soft nylon <sup>(1)</sup> , Polyurethane
Tubing O.D.	ø4, ø6, ø8, ø10, ø12

Note 1) Soft nylon tubing is not compatible with water.

**Made to Order**  
(Refer to page 171 for details.)

### Specifications

Model	KM11	KM12	KM13	KM14	KM15	KM16
Fluid	Air/Water <sup>(2)</sup>					
Operating pressure range	-100 kPa to 1 MPa					
Proof pressure	3 MPa					
Ambient and fluid temperature	-5 to 60°C, Water: 0 to 40°C (No freezing)					
Thread	—	JIS B 0203 (Taper thread for piping)	—	JIS B 0203 (Taper thread for piping)	—	—
Accessory	None	Hexagon socket head blank plug with seal: 1 pc.	None	None	None	None

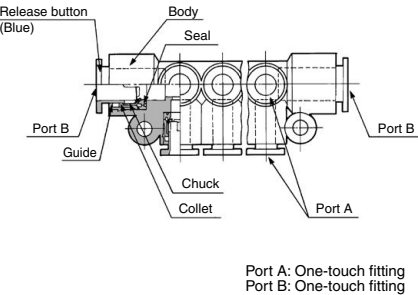
Note 2) The surge pressure must be under the maximum operating pressure.

### Principal Parts Material

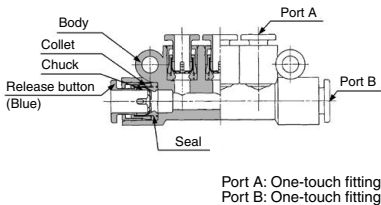
Model	KM11	KM12	KM13	KM14	KM15	KM16
Body	PBT					
Stud	—	C3604	—	C3604	C3604-PBT	—
Chuck	Stainless steel 304					
Guide	Stainless steel 304					
Collet, Release button	POM					
Seal, O-ring	NBR					

**Construction**

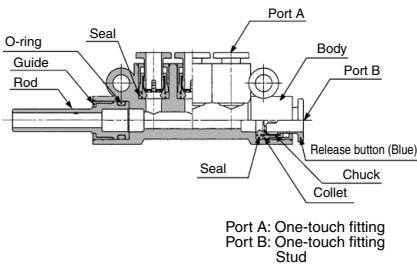
**KM11**



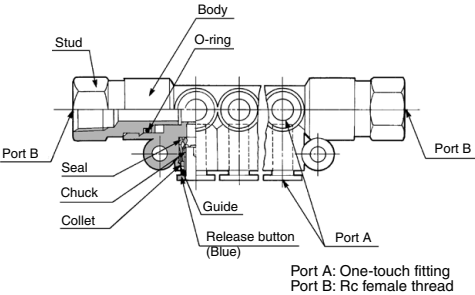
**KM13**



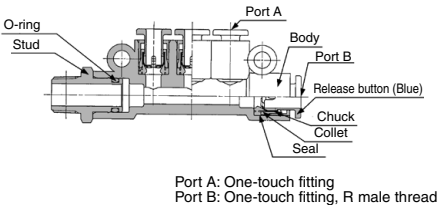
**KM15**



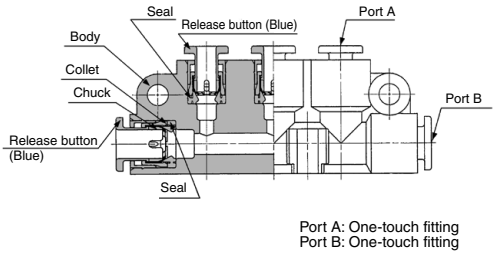
**KM12**



**KM14**

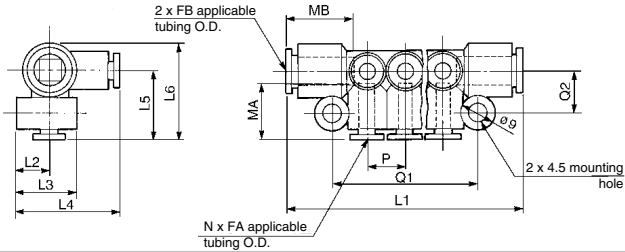


**KM16**



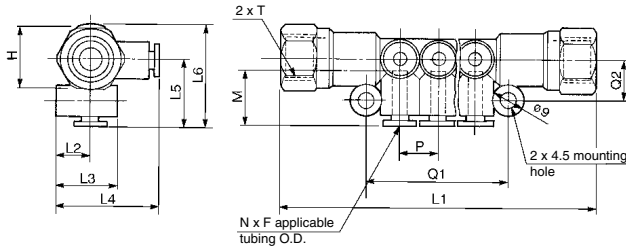
## Dimensions

### KM11



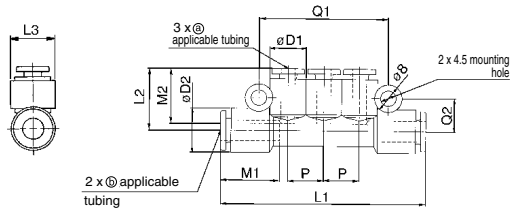
Applicable tubing O.D. (mm)		Model	N	L1	L2	L3	L4	L5	L6	P	Q1	Q2	MA	MB	Port B Min. port size	Weight (g)
FA	FB															
4	8	KM11-04-08-6	6	65	10	18	29.5	19.5	27	10.6	40	12	16	18.5	6	19
		KM11-04-08-10	10	86	10	18	29.5	19.5	27	10.6	61.5	12	16	18.5	6	26
6	10	KM11-06-10-6	6	76	10	19.5	31.5	21.5	31	13	47	13.5	17	21	7.5	29
		KM11-06-10-10	10	102	10	19.5	31.5	21.5	31	13	73	13.5	17	21	7.5	39
8	12	KM11-08-12-6	6	85	11.5	22.5	35.5	24	34.5	15.5	55	14.7	18.5	22	9	41
		KM11-08-12-10	10	116	11.5	22.5	35.5	24	34.5	15.5	86	14.7	18.5	22	9	57

### KM12



Applicable tubing O.D. F (mm)		Connection through Rc T	Model	N	H Width across flats	L1	L2	L3	L4	L5	L6	P	Q1	Q2	M	Port B Min. port size	Weight (g)
4	1/4	1/4	KM12-04-02-6	6	89	10	18	29.5	19.5	29	10.6	40	12	16	6	65	
			KM12-04-02-10	10	110	10	18	29.5	19.5	29	10.6	61.5	12	16	6	72	
6	1/4	1/4	KM12-06-02-6	6	99	10	19.5	31.5	21.5	31	13	47	13.5	17	7.5	81	
			KM12-06-02-10	10	125	10	19.5	31.5	21.5	31	13	73	13.5	17	7.5	91	
8	3/8	3/8	KM12-08-03-6	6	108	11.5	22.5	35.5	24	34.5	15.5	55	14.7	18.5	9	97	
			KM12-08-03-10	10	139	11.5	22.5	35.5	24	34.5	15.5	86	14.7	18.5	9	112	

### KM13

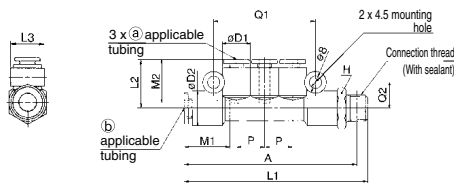


Applicable tubing O.D. (mm)		Model	$\phi D1$	$\phi D2$	L1	L2	L3	P	Q1	Q2	M1	M2	Port B Min. port size	Weight (g)
(a)	(b)													
4	6	KM13-04-06-3	10.4	12.8	60	18	13	10.4	38.2	9.9	17	16	4.5	11
	8	KM13-04-08-3	10.4	15.2	63.5	19	15.5	10.4	38.2	11.1	18.5	16	6	14
6	8	KM13-06-08-3	12.8	15.2	70.5	20	15.5	12.8	45.4	11.1	18.5	17	6	16
	10	KM13-06-10-3	12.8	18.5	74.5	21	19	12.8	45.4	12.8	21	17	7.5	22
8	10	KM13-08-10-3	15.2	18.5	81.5	22.5	19	15.2	52.6	12.8	21	18.5	7.5	26

[Click here for applicable color caps.](#)

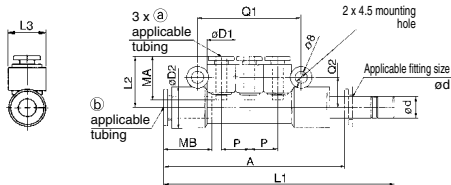
Dimensions

KM14



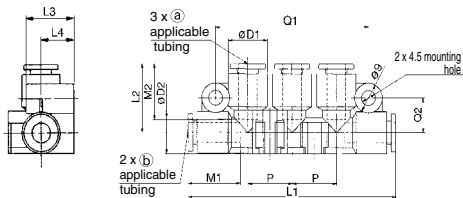
Applicable tubing O.D. (mm)		Connection thread R	Model	H (With across flats)	øD1	øD2	L1	L2	L3	P	A	Q1	Q2	M1	M2	Port B Min. port size	Weight (g)
(a)	(b)																
4	6	1/8	KM14-04-06-01S-3	13	10.4	12.8	67.1	18	13	10.4	64	38.2	9.9	17	16	4.5	18
		1/4	KM14-04-06-02S-3	14			71				65.5						25
		3/8	KM14-04-06-03S-3	17			72.4				67.5						38
4	8	1/8	KM14-04-08-01S-3	17	10.4	15.2	72.6	19	15.5	10.4	69.5	38.2	11.1	18.5	16	6	30
		1/4	KM14-04-08-02S-3				76				70.5						38
		3/8	KM14-04-08-03S-3				76.4				71						38
6	8	1/8	KM14-06-08-01S-3	17	12.8	15.2	79.1	20	15.5	12.8	76.5	45.4	11.1	18.5	17	6	31
		1/4	KM14-06-08-02S-3				82.5				77						39
		3/8	KM14-06-08-03S-3				82.9				78						43
6	10	1/4	KM14-06-10-02S-3	19	12.8	18.5	87	21	19	12.8	81.5	45.4	12.8	21	17	7.5	44
		3/8	KM14-06-10-03S-3				87.4				82						66
		1/2	KM14-06-10-04S-3				91.1				84						47
8	10	1/4	KM14-08-10-02S-3	19	15.2	18.5	93.5	22.5	19	15.2	88	52.6	12.8	21	18.5	7.5	70
		3/8	KM14-08-10-03S-3				93.9				89						70
		1/2	KM14-08-10-04S-3				97.6				90.5						70

KM15



Applicable tubing O.D. (mm)		Applicable fitting size ød	Model	øD1	øD2	L1	L2	L3	P	Q1	Q2	A	MA	MB	Port B min. port size	Weight (g)
(a)	(b)															
4	6	6	KM15-04-06-3	10.4	12.8	78.5	18	13	10.4	38.2	9.9	61.5	16	17	4.5	12
	8	8	KM15-04-08-3											18.5	6	24
6	8	8	KM15-06-08-3	12.8	15.2	92.5	20	15.5	12.8	45.4	11.1	74	17	21	7.5	37
	10	10	KM15-06-10-3											21	7.5	37
8	10	10	KM15-08-10-3	15.2	18.5	105	22.5	19	15.2	52.6	12.8	85	18.5	21	7.5	41

KM16



Applicable tubing O.D. (mm)		Model	øD1	øD2	L1	L2	L3	L4	P	Q1	Q2	M1	M2	Port B Min. port size	Weight (g)
(a)	(b)														
4	4	KM16-04-04-3	12.8	12.8	68	20.9	16	11	14.5	50	10.5	16	16	3	18
4	6	KM16-04-06-3										17	16	4.5	16
6	6	KM16-06-06-3										17	17	4.5	15

[Click here for applicable color caps.](#)



## 1 Grease-free Specifications

Symbol	Specifications
<b>X17</b>	Grease-free Rubber material: NBR (With fluorine coating) Release button color: Light blue
<b>X29</b>	Grease-free Rubber material: NBR (With fluorine coating) Release button color: Light blue Copper-free (With electroless nickel plated)
<b>X94</b>	Grease-free Rubber material: FKM (With fluorine coating) Release button color: Light blue

Suffix "-X17" to the end of part number.

Example) **KM11-04-08-10-X17**

## 2 Other Specifications

Symbol	Specifications
<b>X2</b>	Copper-free (With electroless nickel plated)
<b>X12</b>	Lubricant: White Vaseline Release button color: White
<b>X34</b>	Rubber material: FKM

Suffix "-X2" to the end of part number.

Example) **KM12-04-02-6-X2**

**KQ2**

**KQB2**

**KS**  
**KX**

**KM**

**KF**

**M**

**H/DL**  
**L/LL**

**KC**

**KK**

**KK130**

**DM**

**KDM**

**KB**

**KR**

**KA**

**KQG2**

**KG**

**KFG2**

**MS**

**KKA**

**KP**

**LQ**

**MQR**

**T**

**IDK**

# Inch size One-touch Fittings Manifold

## *KM Series*

Applicable Tubing: Inch size

Compact piping possible.  
Manifold piping possible.  
Many varieties (12 types)  
are available.  
One-touch fittings give the  
most efficient operation.



### Model

Model	Porting		No. of Port A	Port B size	Port A size		
	Port A	Port B			ø5/32"	ø1/4"	ø5/16"
KM11	One-touch fitting	One-touch fitting	6, 10	ø5/16"	●		
				ø3/8"		●	
				ø1/2"			●
KM12	One-touch fitting	NPT thread	6, 10	NPT 1/4	●	●	
				NPT 3/8			●

### Applicable Tubing

Tubing material	FEP, PFA, Nylon, Soft nylon <sup>(1)</sup> , Polyurethane
Tubing O.D.	ø5/32", ø1/4", ø5/16", ø3/8", ø1/2"

Note 1) Soft nylon tubing is not compatible with water.

### Specifications

Model	KM11	KM12
Fluid	Air/Water <sup>(2)</sup>	
Maximum operating pressure	1 MPa	
Proof pressure	3 MPa	
Ambient and fluid temperature	-5 to 60°C, Water: 0 to 40°C (No freezing)	
Thread	—	ANSI/ASME B1.20, 1-1983 (NPT thread)

Note 2) The surge pressure must be under the maximum operating pressure.



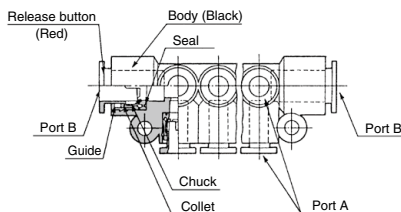
**Made to Order**  
(Refer to page 174 for details.)

### Principal Parts Material

Model	KM11	KM12
Body	PBT	
Stud	—	C3604
Chuck	Stainless steel 304	
Guide	Stainless steel 304, C3604	
Collet, Release button	POM	
Seal, O-ring	NBR	

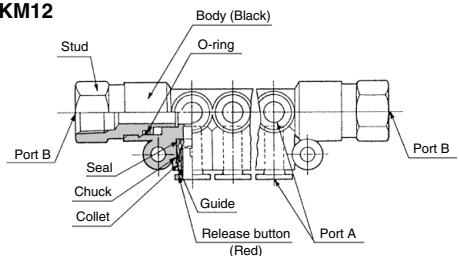
### Construction

#### KM11



Port A: One-touch fitting  
Port B: One-touch fitting

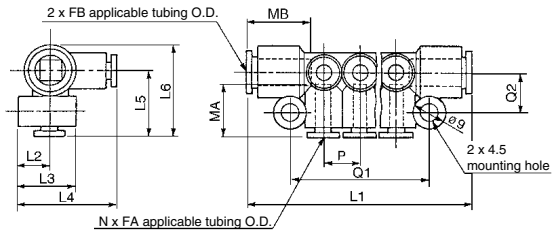
#### KM12



Port A: One-touch fitting  
Port B: NPT female thread

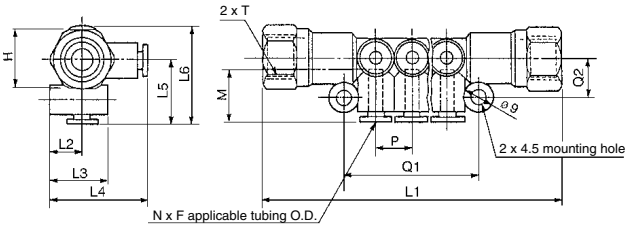
Dimensions

KM11



Applicable tubing O.D. (inch)		Model	N	L1	L2	L3	L4	L5	L6	P	Q1	Q2	MA	MB	Port B Min. port size	Weight (g)
FA	FB															
5/32	5/16	KM11-03-09-6	6	65	10	18	29.5	19.5	27	10.6	40	12	16	18.5	6	19
		KM11-03-09-10	10	86							61.5					26
1/4	3/8	KM11-07-11-6	6	77.8	10	19.5	31.5	21.5	30.5	13.2	48	13	17	21	7	30
		KM11-07-11-10	10	104							73.5					40
5/16	1/2	KM11-09-13-6	6	85	12.7	23.7	37.7	25	35.9	15.2	52.8	15	18.5	22	9.5	41
		KM11-09-13-10	10	115							83					57

KM12



Applicable tubing O.D. F (inch)		T Connection thread NPT	Model	N	H (Width across flats)	L1	L2	L3	L4	L5	L6	P	Q1	Q2	M	Port B Min. port size	Weight (g)
5/32	1/4	1/4	KM12-03-35-6	6	17.46	87	10	18	29.5	19.5	29	10.6	40	12	16	6	65
			KM12-03-35-10	10		110							61.5				72
1/4	1/4	1/4	KM12-07-35-6	6	17.46	95	10	19.5	31.5	21.5	31.25	13.2	48	13	17	7	82
			KM12-07-35-10	10		121							73.5				92
5/16	3/8	3/8	KM12-09-36-6	6	22.22	102	12.7	23.7	37.7	25	37.5	15.2	52.8	15	18.5	9.5	97
			KM12-09-36-10	10		132							83				112

[Click here for applicable color caps.](#)

Handling of One-touch Fittings

**⚠ Caution**

Refer to pages 13 to 17 for "Fittings & Tubing Precautions" for the details of installation/removal of One-touch fittings.

KQ2

KQB2

KS  
KX

KM

KF

M

H/DL  
L/LL

KC

KK

KK130

DM

KDM

KB

KR

KA

KQG2

KG

KFG2

MS

KKA

KP

LQ

MQR

T

IDK



## 1 Grease-free Specifications

Symbol	Specifications
<b>X17</b>	Grease-free Rubber material: NBR (With fluorine coating) Release button color: Light blue
<b>X29</b>	Grease-free Rubber material: NBR (With fluorine coating) Release button color: Light blue Copper-free (With electroless nickel plated)
<b>X94</b>	Grease-free Rubber material: FKM (With fluorine coating) Release button color: Light blue

Suffix "-X17" to the end of part number.

Example) **KM11-03-09-10-X17**

## 2 Other Specifications

Symbol	Specifications
<b>X2</b>	Copper-free (With electroless nickel plated)
<b>X12</b>	Lubricant: White Vaseline Release button color: White
<b>X34</b>	Rubber material: FKM

Suffix "-X2" to the end of part number.

Example) **KM12-03-35-6-X2**