



LOCKOUT-TAGOUT (LOTO) SOLUTION

**MANUAL SHUT-OFF VALVE IN STAINLESS STEEL
ISO 13849 VALIDATION APPLIED**



YOUR AUTOMATION PARTNER



Courtesy of Steven Engineering, Inc - (800) 258-9200 - sales@steveneng.com - www.stevenengineering.com

MANUAL SHUT-OFF VALVE

Isolates supply and exhausts residual pressure

Lockout-Tagout (LoTo) is a procedure of all hazardous energy sources that supply power to a piece of equipment, machinery or systems which is used in industry and research settings. LoTo operations must be done on all equipment, machinery or system shut downs before authorized personnel can perform repairs or services on this. It requires that hazardous energy sources must be “isolated and rendered inoperative” before work is started on the equipment. Equipment and machinery shall have an Energy-Isolation-Device. These devices are put into the Off-Position to shut down the hazardous energy source. The isolated power sources (Off-Position) must be locked with a padlock if necessary.

LoTo is used across industries as a safe method of working on hazardous equipment and machinery and is mandated by law in some countries.



**Manual shut-off valve
Series VHS-X2155**

- Connection sizes: 1/4“, 3/8“, 1/2“
- Ventilation performance up to 1860 l/min
- Flow rate up to 2260 l/min

The benefits at a glance:

- > stainless steel
- > LoTo suitable
- > lockable
- > adaptable with FRL
- > cleanable
- > small and compact in size

Further adaptable SMC products in stainless steel



**Filter Regulator
Series AW-X2622**



**Sintered SUS Silencer
Series ES**



**One-touch Fittings
Series KQG2**



**Insert Fittings
Series KFG2**



**Clean one-touch
Fittings
Series KPG**



**S Coupler
Series KKA**

SMC Pneumatik GmbH

Boschring 13-15 • 63329 Egelsbach • Germany
Tel. +49 (0) 6103 402-0
info@smc.de
www.smc.de • www.smc.eu • www.smc-iac.com

YOUR AUTOMATION PARTNER





ON SMD

BE SURE TO REFER TO "CATALOG" AND "OPERATION MANUAL"
FOR F.R.L. PRECAUTIONS BEFORE HANDLING.

UNLESS OTHERWISE NOTED ALONG WITH A SEPARATE
CONTRACT OR AGREEMENT WITHIN THE PRODUCT
SPECIFICATIONS, THE SAFETY INSTRUCTIONS SPECIFIED
IN THE PRODUCT CATALOG ARE APPLIED. PLEASE CONTACT
YOUR LOCAL SMC SALES OFFICE FOR FURTHER DETAILS.

ORDER SPECIFICATION CODE

VHS 30 -
SINGLE ACTION

SYMBOL	THREAD TYPE	SYMBOL	PORT SIZE
NIL	Rc	02	1/4
F	G	03	3/8
N	NPT	04	1/2

SYMBOL	HANDLE MATERIAL
B	ALUMINUM
C	STAINLESS STEEL

SYMBOL	OPTIONS
NIL	-
S	BUILT-IN SILENCER (EXH PORT)

SYMBOL	SEMI-STANDARD
NIL	-
R	FLOW DIRECTION: RIGHT TO LEFT
Z*1	psi AS UNIT DISPLAYED ON LABEL

*1) ONLY FOR NPT THREAD.

WHEN SPECIFYING MORE THAN ONE OPTION, PLEASE LIST ALPHABETICALLY.

SPECIFICATIONS

ITEM	STANDARD
FLUID	AIR
AMBIENT AND FLUID TEMPERATURE	°C -5~60 (NO FREEZING)
PROOF PRESSURE	MPa 1.5
OPERATING PRESS. RANGE	MPa 0.1~1.0
HANDLE SWITCHING ANGLE	90°

NOTE

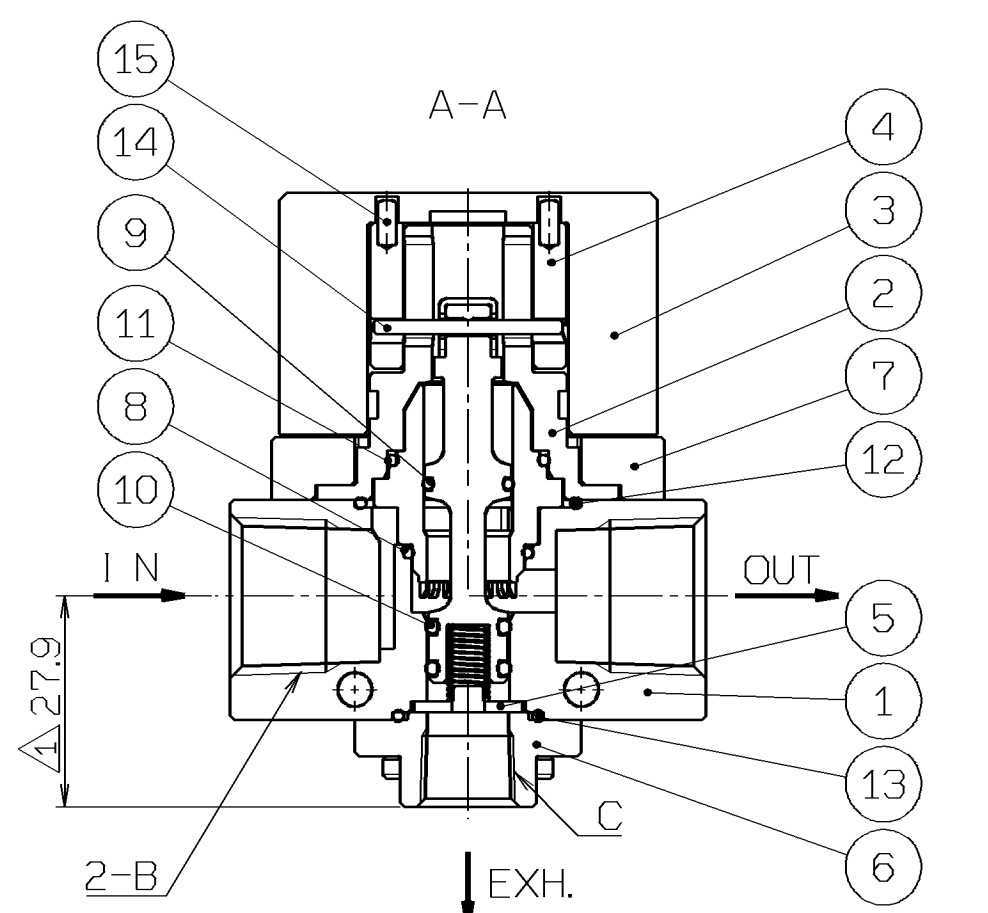
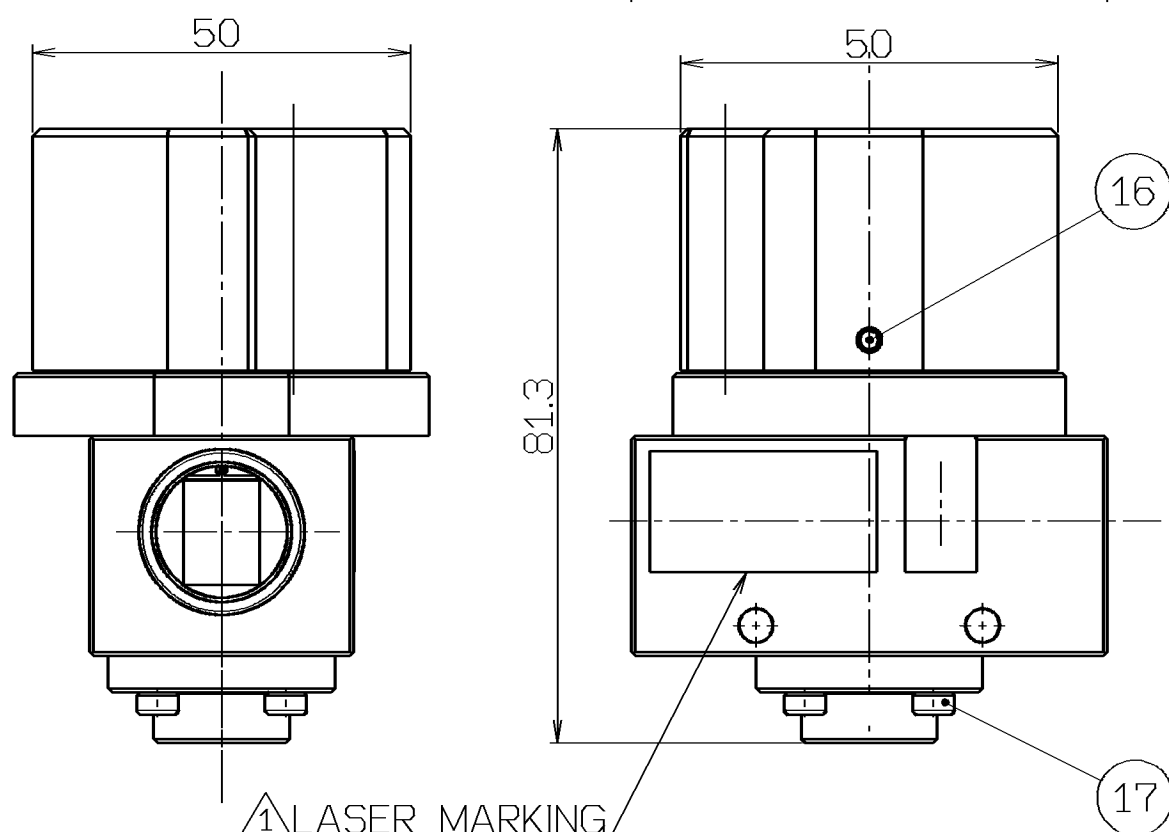
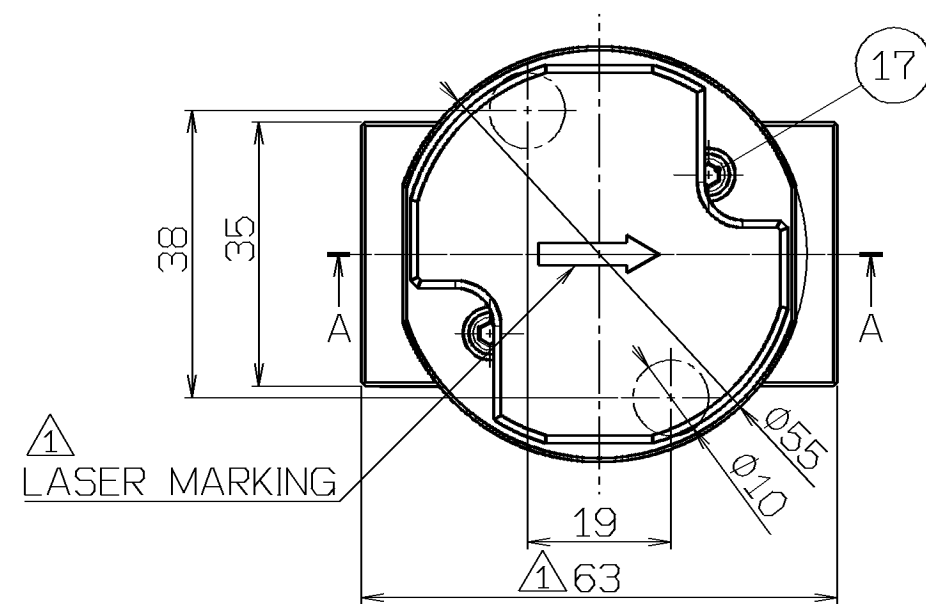
1. OPTION "-S" : SILENCER IS ASSEMBLED FOR SHIPPING.

CAUTIONS CONCERNING SPECIFICATIONS, ASSEMBLY, AND INSPECTION OF CUSTOM-MADE PRODUCTS

*DIFFERENCE FROM THE STANDARD TYPE,

{VHS30-(F,N)**B(-S)(-R,Z)}

- PARTS ARE COMMON WITH STANDARD.
- MATERIAL OF BODY, BONNET, BOTTOM BODY, BONNET PLATE, PARALLEL PIN AND SCREW: STAINLESS STEEL
- MATERIAL OF HANDDLE: ALUMINUM OR STAINLESS STEEL
- RUBBER MATERIAL: FKM
- WITH LASER MARKING.
- ⑰ BOLTS ARE FIXED BY ADHESIVE.
- AS FOR ASSEMBLING AND INSPECTION FOLLOW THE METHODS OF STANDARD.



WITH SILENCER(2:1)

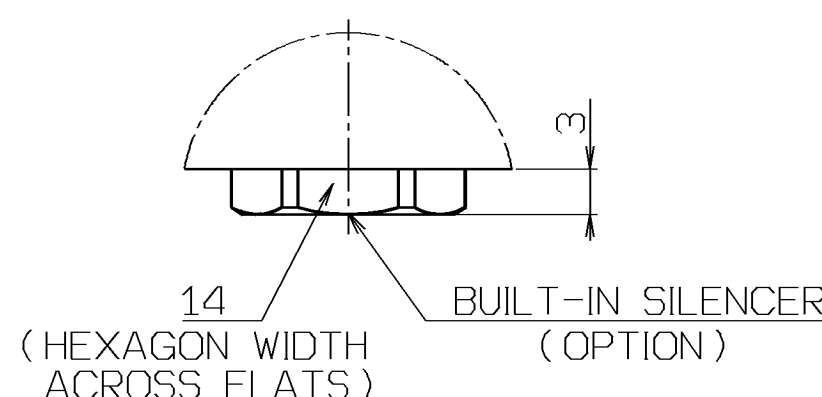


TABLE.2

MODEL NO.	③ HANDLE		
	No.	MATERIAL	TREATMENT
VHS30-(F,N)**B(-S)(-R,Z)-X2155	VHS30PW-031M-X2155	ALMINIUM	CHROMATE
VHS30-(F,N)**C(-S)(-R,Z)-X2155	VHS30PW-031S-X2155	STAINLESS STEEL	-

TABLE.1

MODEL NO.	① BODY	⑥ BOTTOM BODY	PORT SIZE	
			2-B	C
VHS30-02B.C(-S)(-R)-X2155	VHS30PW-010-02-X2155	VHS30PW-260-02-X2155	Rc1/4	Rc1/4
VHS30-03B.C(-S)(-R)-X2155	VHS30PW-010-03-X2155		Rc3/8	
VHS30-04B.C(-S)(-R)-X2155	VHS30PW-010-04-X2155		Rc1/2	
VHS30-F02B.C(-S)(-R)-X2155	VHS30PW-010-F02-X2155	VHS30PW-260-F02-X2155	G1/4	G1/4
VHS30-F03B.C(-S)(-R)-X2155	VHS30PW-010-F03-X2155		G3/8	
VHS30-F04B.C(-S)(-R)-X2155	VHS30PW-010-F04-X2155		G1/2	
VHS30-N02B.C(-S)(-R,Z)-X2155	VHS30PW-010-N02-X2155	VHS30PW-260-N02-X2155	NPT1/4	NPT1/4
VHS30-N03B.C(-S)(-R,Z)-X2155	VHS30PW-010-N03-X2155		NPT3/8	
VHS30-N04B.C(-S)(-R,Z)-X2155	VHS30PW-010-N04-X2155		NPT1/2	

17	CA01110	HEXAGON SOCKET HEAD CAP SCREW	STAINLESS STEEL	8	M3x10
16	BA00665	HEXAGON SOCKET SET SCREW LONG DOG POINT	STAINLESS STEEL	2	M3x12
15	GB00039	PARALLEL PIN	STAINLESS STEEL	2	2.5x6
14	VHS30PW-110-6	PARALLEL PIN	STAINLESS STEEL	1	
13	KA00195	"O"RING	FKM	1	20x1.5W
12	KA01491	"O"RING	FKM	1	27x1.5W
11	KA02164	SLEEVE "O"RING	FKM	1	
10	VHS30PW-101-2	SPOOL "O"RING B	FKM	2	
9	VHS30PW-090-2	SPOOL "O"RING A	FKM	1	
8	VHS30PW-080-2	BONNET "O"RING	FKM	1	
7	VHS30PW-270-X2155		STAINLESS STEEL	1	
6	REFER TO TABLE.1		STAINLESS STEEL	1	
5	VHS30PW-250-X2155		STAINLESS STEEL	1	
4	VHS30PW-041-X2155	CAM RING	BRASS	1	
3	REFER TO TABLE.2	HANDLE	-	1	
2	VHS30PW-021M-X2155	BONNET	STAINLESS STEEL	1	
1	REFER TO TABLE.1	BODY	STAINLESS STEEL	1	

ITEM	PART NO	PART NAME	MATERIAL	QTY	REMARKS
CHANGE: NOTE					
KA00368-KA0149153-6329.4-27.9					
AA00055-CA01110KA00294-KA00195					
ADD:04,"O"RING4PeaceLASER MARKING					
INITIAL RELEASE					
REV QTY DESCRIPTION DATE PREPARED REV NO					
TOLERANCES JIS B 0405					
GRADE					
RANGE(mm) F M C					
0.5±0.3 0.05 0.1 0.2					
3<D≤6 0.05 0.1 0.3					
6<D≤30 0.1 0.2 0.5					
30<D≤120 0.15 0.3 0.8					
120<D≤400 0.2 0.5 1.2					
400<D≤1000 0.3 0.8 2					
1000<D≤2000 0.5 1.2 3					
DRAWN MSUZUKI					
DATE 2017-03-14					
DESIGNED KSahashi					
DATE 2017-03-14					
CHECKED					
DATE					
APPROVED T.Wada					
DATE 2017-03-14					
SCALE FREE					
DWG NAME 3PORT HAND VALVE					
DWG NO					
(A) VHS30-(F,N)**B.C(-S)(-R,Z)-X2155					
REVISION					
1					

FINISH: 表面处理 / PAINT: 塗装 / MASS: 質量
PACKING: 包装区分 / MATERIAL: 材質
MATERIAL SIZE: 材料寸法

DWG NAME

DWG REC

DWG ID AC54311602

SMC Corporation

