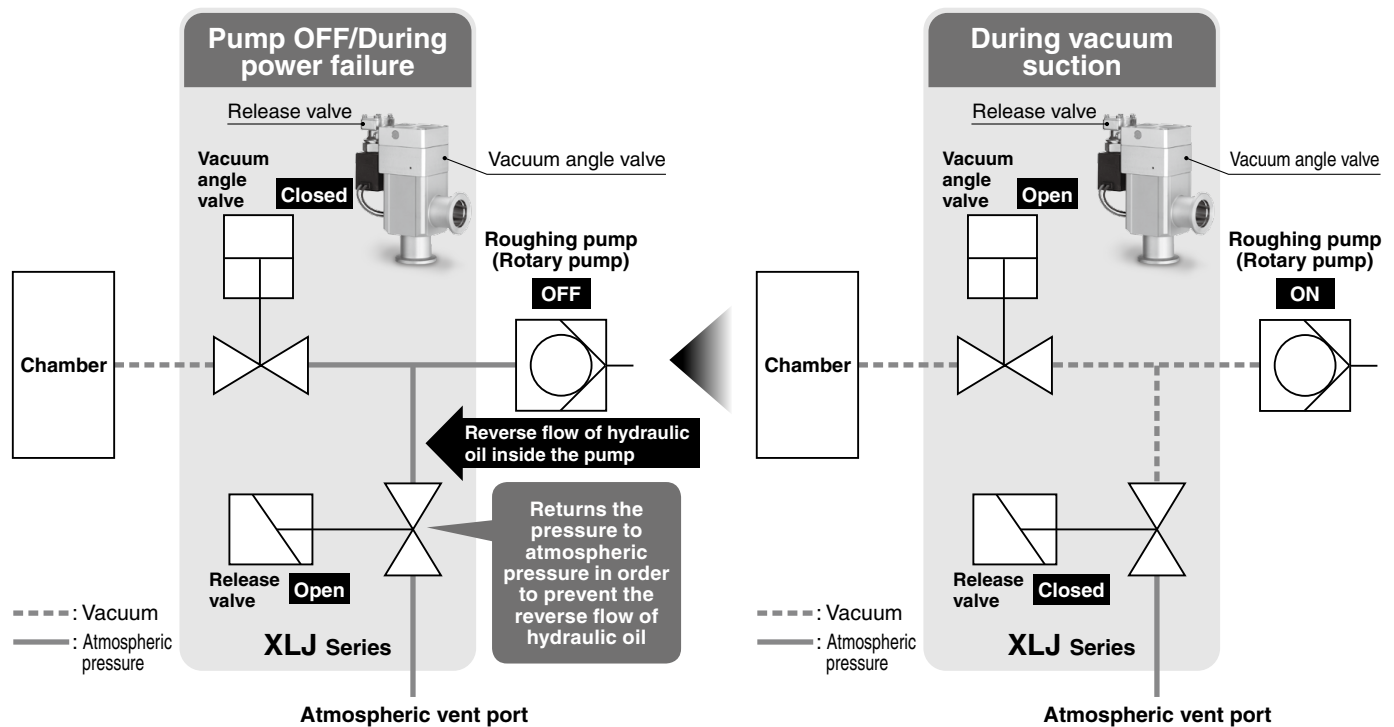


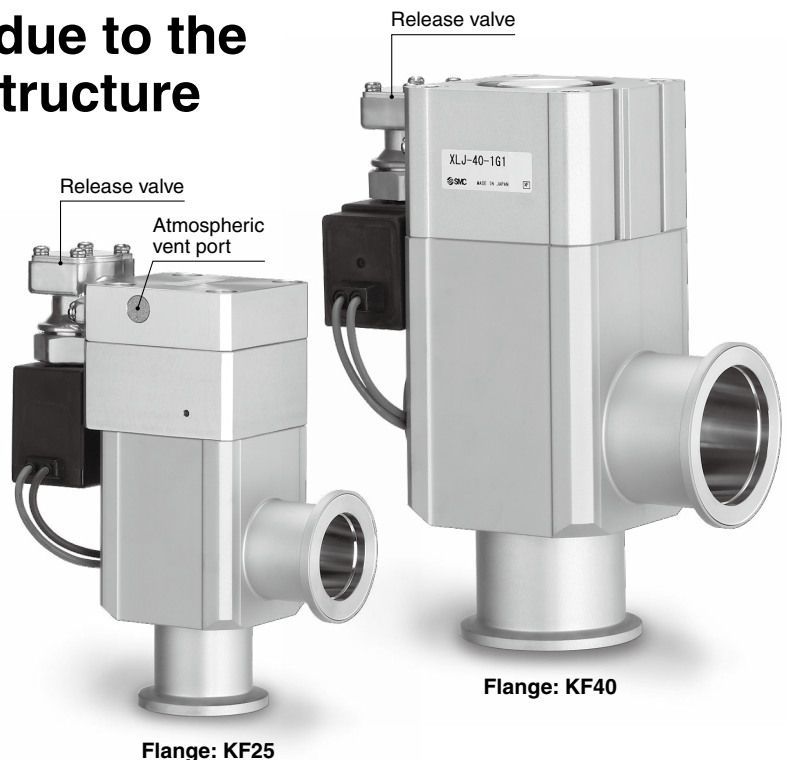
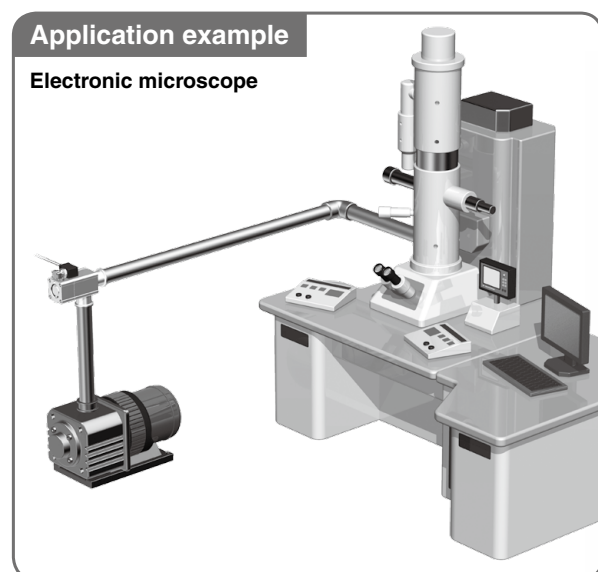
# Vacuum Angle Valve with Release Valve



- Prevents the reverse flow of oil through the roughing pump (rotary pump) into the chamber



- Reduced piping labor due to the built-in release valve structure



## XLJ Series



18-E704

# Vacuum Angle Valve with Release Valve

## XLJ Series



### How to Order

XLJ - **25** - **1** G1

With release valve •

①

②

#### ① Flange size

| Symbol    | Flange type/Size |
|-----------|------------------|
| <b>25</b> | KF25             |
| <b>40</b> | KF40             |

#### ② Rated voltage

| Symbol   | Rated voltage | XLJ-25 | XLJ-40 |
|----------|---------------|--------|--------|
| <b>1</b> | 100 VAC       | ●      | ●      |
| <b>2</b> | 200 VAC       | ●      | ●      |
| <b>3</b> | 110 VAC       | ●      | ●      |
| <b>4</b> | 220 VAC       | ●      | ●      |
| <b>5</b> | 24 VDC        | ●      | ●      |
| <b>6</b> | 12 VDC        | ●      | ●      |
| <b>7</b> | 240 VAC       | ●      | ●      |
| <b>J</b> | 230 VAC       | ●      | ●      |

### Specifications

| Model   | XLJ-25  | XLJ-40               |
|---|---|----------------------|
| Valve type  | Normally closed/Vacuum pilot  |                      |
| Shaft seal type                                       | O-ring seal   |                      |
| Operating pressure range                              | Atmospheric pressure to $1 \times 10^{-2}$ Pa   |                      |
| Fluid   | Inert gas   |                      |
| Piping direction                                      | Fixed   |                      |
| Internal leakage                                      | $1.3 \times 10^{-8}$ Pa·m <sup>3</sup> /s or less* <sup>1</sup>                             |                      |
| External leakage                                      | $1.3 \times 10^{-6}$ Pa·m <sup>3</sup> /s or less* <sup>1</sup>                             |                      |
| Operating temperature                                 | 5 to 40°C   |                      |
| Conductance   | 12 L/s* <sup>2</sup>  | 45 L/s* <sup>2</sup> |
| Starting voltage                                      | 100 VAC, 200 VAC, 110 VAC, 230 VAC, 220 VAC, 240 VAC, 12 VDC, 24 VDC                        |                      |
| Electrical entry                                      | Grommet   |                      |
| Flange type   | KF25  | KF40                 |
| Weight  | 0.95 kg   | 1.5 kg               |
| ON operation<br>(Operating simultaneously with pump)  | The valve opens after approx. 2 seconds.* <sup>3</sup>                                      |                      |
| OFF operation<br>(Operating simultaneously with pump) | The valve closes instantaneously.<br>The pump side releases the air immediately afterwards. |                      |
| Standards   | CE marking  |                      |

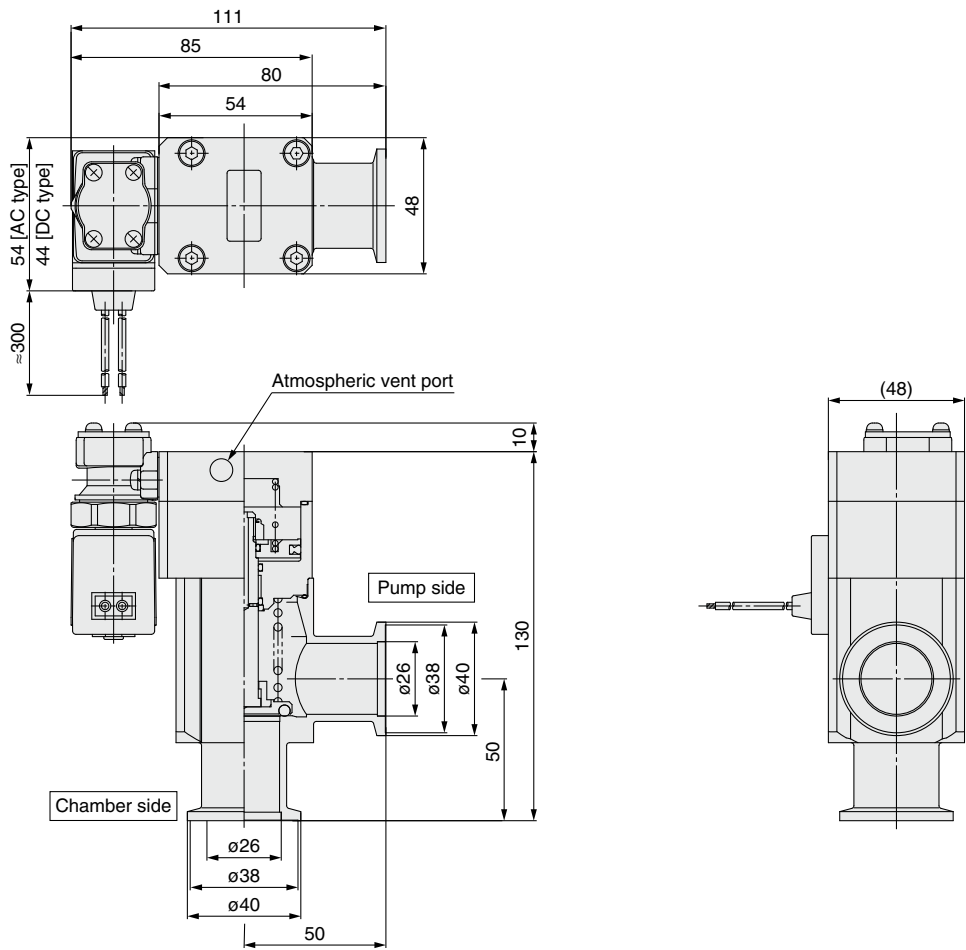
\*<sup>1</sup> The amount of leakage is the value when the ambient temperature is 20°C and the differential pressure is 0.1 MPa. Excludes gas permeation

\*<sup>2</sup> The conductance is the value calculated using an elbow of the same dimensions.

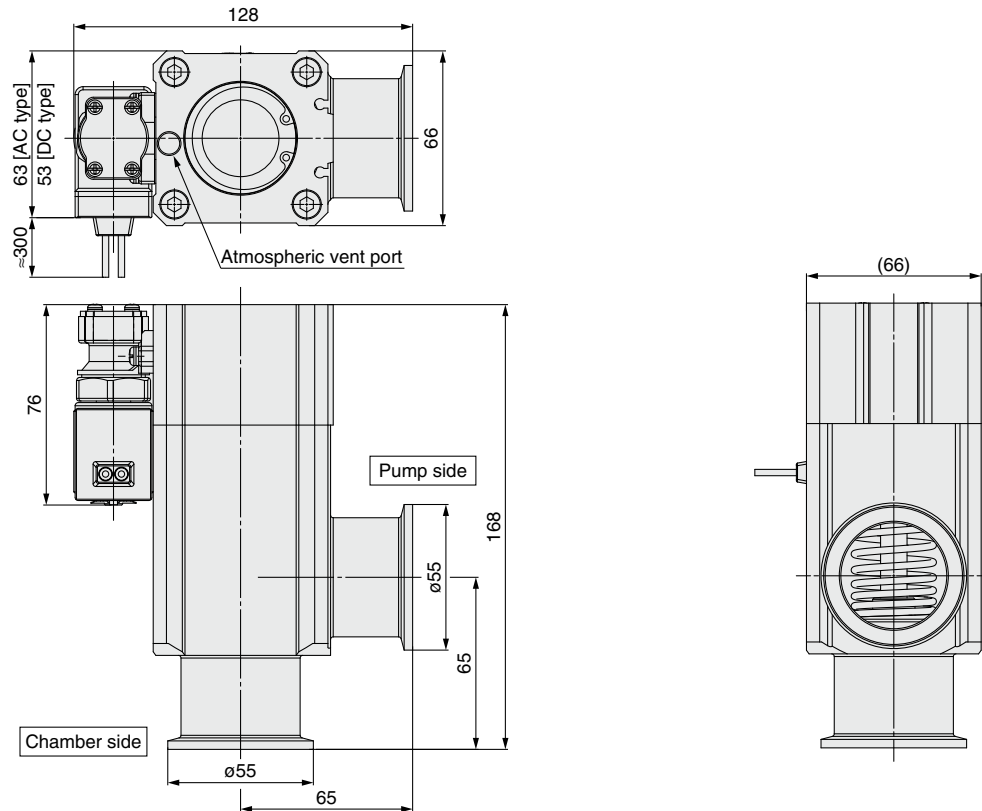
\*<sup>3</sup> The value when using a pump that has an exhaust speed of 75 L/min


**Dimensions**

**XLJ-25**



**XLJ-40**



|  |  |
|--|--|
|  <b>Safety Instructions</b> | Be sure to read the "Handling Precautions for SMC Products" (M-E03-3) and "Operation Manual" before use. |
|--|--|