

# Junction Style

---



# DuraBoxx® Series





## DuraBoxx® Series

The Stahlin **DuraBoxx® Series** was developed with a sleek design and shallow depths. These enclosures are suited for rugged, durable performance in both commercial and industrial indoor and outdoor environments such as mining, oil, gas, wastewater treatment, and petro-chem. Also, because of their pleasing aesthetics and flush cover design, they are well suited for high-end electronic applications such as wireless communications and operator interfaces.

### Attributes

- Flat cover with captive cover screws
- DIN rail mounting capabilities
- No sidewall obstructions, flush cover
- Clear cover options available on select sizes
- Back panels available for all sizes

### Industry Standards

<b>NEMA 250, UL Listed UL50, UL50e, UL508A</b>	File E64358 Type 1, 3, 3S, 4X, 6, 6P, 12
<b>CSA Std C22.2</b>	File LR069014 Type 1, 3, 3S, 4X, 6, 6P, 12
<b>IEC 60529</b>	IP66, IP67, IP68
<b>Temperature Range</b>	(-26°F to +257°F) (-32°C to +125°C)
<b>Flammability Rating</b>	UL94-V0
<b>Self Extinguishing</b>	Non-halogenated, Non-flame propagating
<b>Outdoor UV Exposure</b>	(f1) Rated

### Product Configurations

#### D SERIES



FLUSH FITTING  
COVER FASTENED  
BY CAPTIVE  
LID SCREWS

#### DL SERIES



FLUSH FITTING  
COVER FASTENED  
BY CAPTIVE  
LID SCREWS



# D Series



**CONFIGURATION**  
Flush fitting cover fastened  
by captive lid screws



## W Construction

<b>Material</b>	Hot compression molded fiberglass reinforced polyester (thermoset)
<b>Gasket</b>	Poured polyurethane seamless gasket provides watertight, dust-tight environmental seal
<b>Recessed Screws</b>	No protruding surfaces
<b>Stainless Steel Hardware</b>	300 Series stainless used on all hardware
<b>Mounting Bosses</b>	Panel mounting capability for fixed rear panel or DIN rail
<b>Metal Inserts</b>	All bosses utilize threaded brass inserts accepting M6 screws
<b>Soft Edge Design</b>	Rounded edges, minimal protrusions or exposed pocket areas for assembly of dust and debris

## W Modifications

<b>Custom Colors</b>	pg. 21-22
<b>Silk Screening</b>	pg. 21-22
<b>EMI/RFI Shielding</b>	pg. 21-22
<b>Custom Window</b>	pg. 21-22
<b>Custom Cutouts/Holes</b>	pg. 21-22

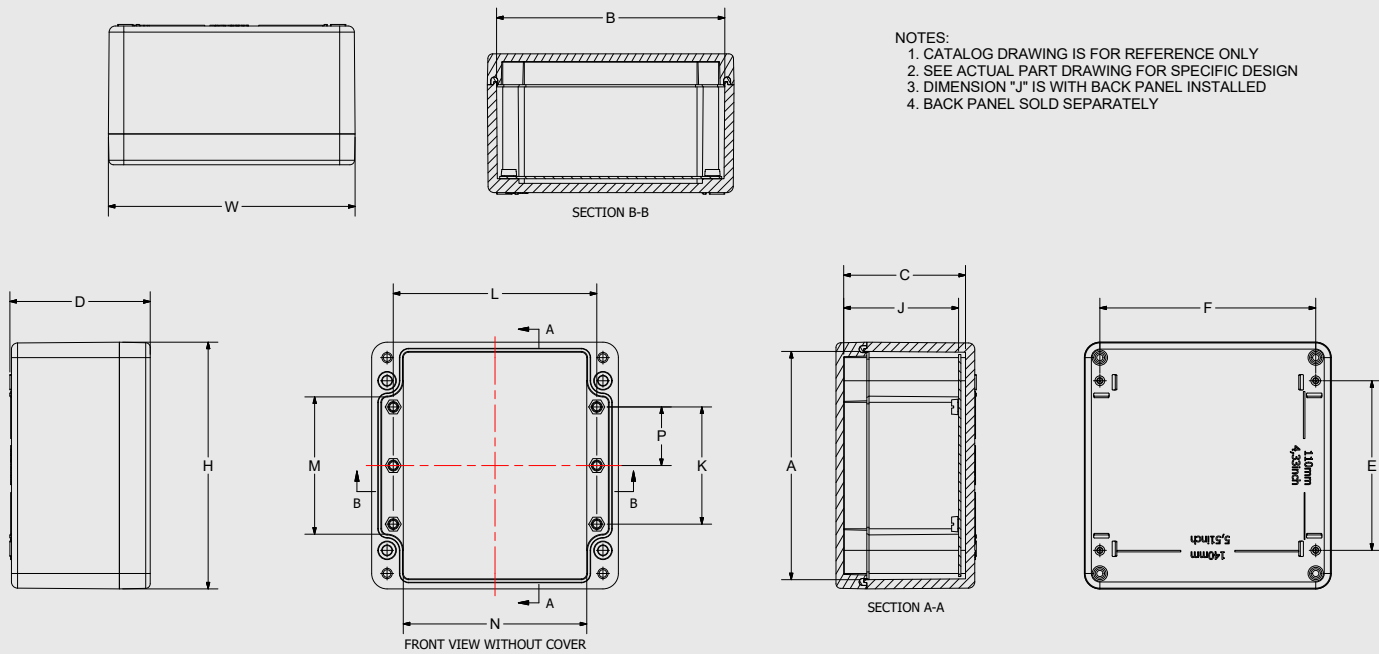
## W Industry Standards

<b>NEMA 250, UL Listed UL50, UL50e, UL508A</b>	File E64358 Type 1, 3, 3S, 4X, 6, 6P, 12
<b>CSA Std C22.2</b>	File LR069014 Type 1, 3, 3S, 4X, 6, 6P, 12
<b>IEC 60529</b>	IP66, IP67, IP68
<b>Temperature Range</b>	(-26°F to +257°F) (-32°C to +125°C)
<b>Flammability Rating</b>	UL94-V0
<b>Self Extinguishing</b>	Non-halogenated, Non-flame propagating
<b>Outdoor Exposure UL746C</b>	(f1) Rated

## W Accessories

<b>Aluminum Back Panels</b>	D_BP	pg. 176
<b>Drain &amp; Breather Vents</b>		pg. 185
<b>Hole Plugs</b>		pg. 187
<b>Assorted Hubs and Cord Grips</b>		pg. 188-189
<b>All Other Accessories</b>		pg. 184-194

ACCESSORIES



- NOTES:  
1. CATALOG DRAWING IS FOR REFERENCE ONLY  
2. SEE ACTUAL PART DRAWING FOR SPECIFIC DESIGN  
3. DIMENSION "J" IS WITH BACK PANEL INSTALLED  
4. BACK PANEL SOLD SEPARATELY

### SCREW SIZES & TORQUE VALUES

PRODUCT SIZES	BACK PANEL SCREW SIZE	BACK PANEL RECOMMENDED TORQUE	COVER SCREW SIZE	COVER SCREW RECOMMENDED TORQUE	MOUNTING FOOT SCREW SIZE	MOUNTING FOOT SCREW RECOMMENDED TORQUE	RECOMMENDED MOUNTING FLANGE TORQUE
All Sizes	M6 x 9.5 mm	16 - 20 in-lbs	M6-1.0 x 35 mm	20 - 24 in-lbs	All Sizes	20 - 24 in-lbs	20 - 24 in-lbs

## DuraBoxx® Series – D Series

CATALOG NUMBER	OVERALL H X W X D	INSIDE A X B X C	MOUNTING E X F	J	K	L	M X N	P	SHIP WEIGHT	PANEL NUMBER
D333W	2.95 x 3.15 x 2.98 (75 x 80 x 76)	2.56 x 2.76 x 2.56 (65 x 70 x 65)	1.57 x 2.48 (40 x 63)	2.26 (57)	N/A	2.28 (58)	1.06 x 1.93 (27) (49)	N/A	0.81 LB	D333BP*
D342W	2.95 x 4.33 x 2.22 (75 x 110 x 56)	2.56 x 3.96 x 1.81 (65 x 100 x 46)	1.77 x 3.86 (45 x 98)	1.53 (39)	N/A	3.50 (89)	1.29 x 3.37 (33) (86)	N/A	.88 LB	D342BP*
D554W DCC554W	4.72 x 4.80 x 3.58 (120 x 122 x 91)	4.33 x 4.41 x 3.15 (110 x 112 x 80)	3.23 x 4.17 (82 x 106)	2.93 (74)	2.05 (52)	3.74 (95)	2.56 x 3.50 (65) (89)	1.02 (26)	1.7 LB	D554BP*
D593W DCC593W	4.72 x 8.66 x 3.18 (120 x 220 x 81)	4.34 x 8.28 x 2.83 (110 x 210 x 72)	3.23 x 8.03 (82 x 204)	2.62 (67)	2.05 (52)	7.60 (193)	2.57 x 7.37 (65) (187)	1.02 (26)	2.4 LB	D593BP*
D594W DCC594W	4.72 x 8.66 x 3.58 (120 x 220 x 91)	4.33 x 8.27 x 3.15 (110 x 210 x 80)	3.23 x 8.03 (82 x 204)	2.93 (74)	2.05 (52)	7.60 (193)	2.57 x 7.37 (65) (187)	1.02 (26)	2.5 LB	D594BP*
D774W	6.30 x 6.30 x 3.58 (160 x 160 x 91)	5.79 x 5.79 x 3.11 (147 x 147 x 79)	4.33 x 5.51 (110 x 140)	2.93 (74)	2.99 (76)	5.20 (132)	3.50 x 4.68 (89) (119)	1.50 (38)	2.8 LB	D774BP*
D7114W	6.30 x 10.24 x 3.58 (160 x 260 x 91)	5.79 x 9.72 x 3.11 (147 x 247 x 79)	4.33 x 9.45 (110 x 240)	2.93 (74)	2.99 (76)	9.13 (232)	3.50 x 8.62 (89) (219)	1.50 (38)	3.8 LB	D7114BP*
D10105W	9.84 x 10.04 x 4.76 (250 x 255 x 121)	9.32 x 9.51 x 4.29 (237 x 242 x 109)	7.87 x 9.25 (200 x 235)	4.11 (104)	3.94 (100)	8.94 (227)	7.03 x 8.41 (179) (214)	1.97 (50)	6.4 LB	D10105BP*
D10165W	9.84 x 15.75 x 4.76 (250 x 400 x 121)	9.32 x 15.22 x 4.29 (237 x 387 x 109)	7.87 x 14.96 (200 x 380)	4.09 (104)	3.94 (100)	14.65 (327)	7.03 x 14.12 (179) (359)	1.97 (50)	8.8 LB	D10165BP*
D14144W	14.17 x 14.17 x 3.58 (360 x 360 x 91)	13.66 x 13.66 x 3.11 (347 x 347 x 79)	12.20 x 13.39 (310 x 340)	2.91 (74)	5.35 (136)	13.07 (332)	11.38 x 12.56 (289) (319)	2.68 (68)	8.0 LB	D14144BP*
D16165W	15.94 x 15.75 x 4.76 (405 x 400 x 121)	15.42 x 15.22 x 4.29 (392 x 387 x 109)	13.98 x 14.96 (355 x 380)	4.09 (104)	9.84 (250)	14.65 (372)	13.14 x 14.12 (334) (359)	4.92 (125)	11.0 LB	D16165BP*

DuraBoxx® Clear Cover Sizes: DCC Part Number.



\* Panel ordered separately



# DL Series



**CONFIGURATION**  
Flush fitting cover fastened  
by captive lid screws



## W Construction

Material	Hot compression molded fiberglass reinforced polyester (thermoset)
Gasket	Poured polyurethane seamless gasket provides watertight, dust-tight environmental seal
Recessed Screws	No protruding surfaces
Stainless Steel Hardware	300 Series stainless used on all hardware
Mounting Bosses	Panel mounting capability for fixed rear panel
Metal Inserts	All bosses utilize threaded brass inserts accepting M6 screws
Soft Edge Design	Rounded edges, minimal protrusions or exposed pocket areas for assembly of dust and debris

## W Modifications

Custom Colors	pg. 21-22
Silk Screening	pg. 21-22
EMI/RFI Shielding	pg. 21-22
Custom Window	pg. 21-22
Custom Cutouts/Holes	pg. 21-22

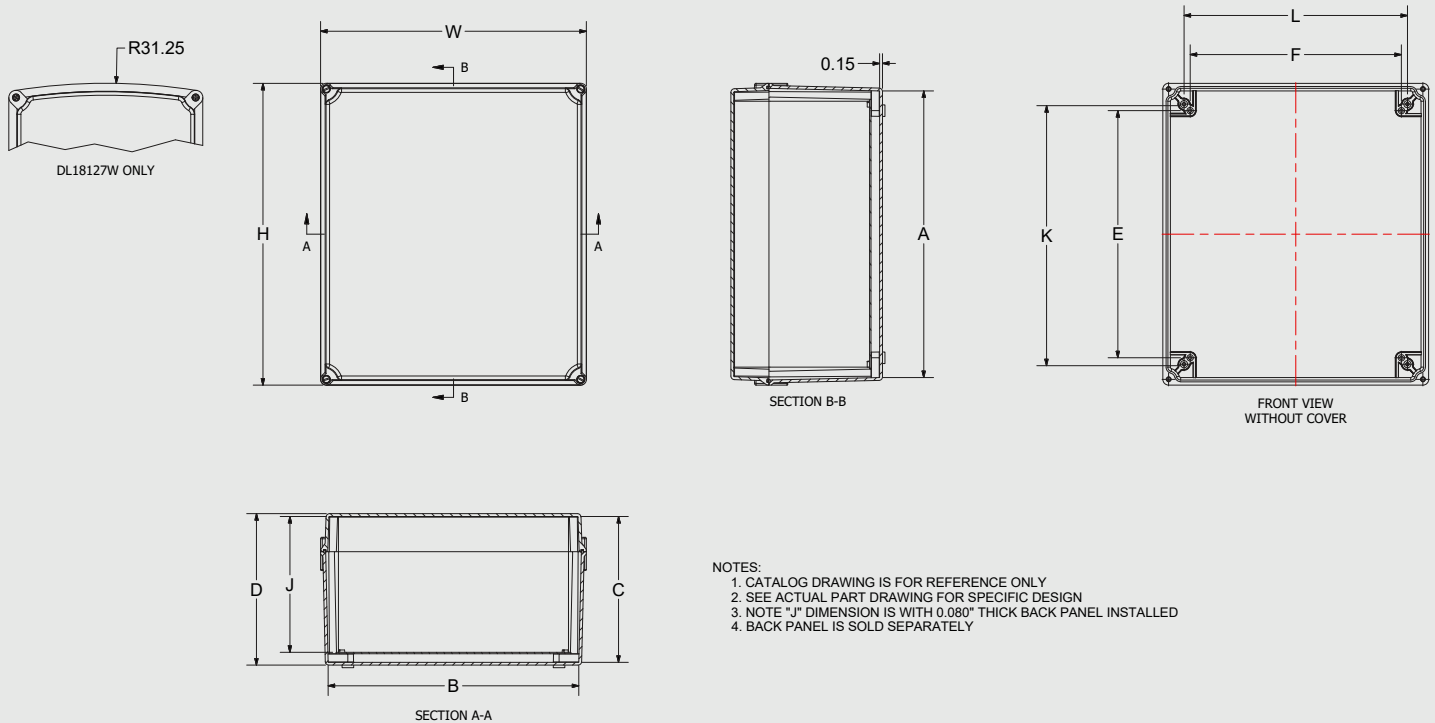
## W Industry Standards

NEMA 250, UL Listed UL50, UL50e, UL508A	File E64358 Type 1, 3, 3S, 4X, 6, 6P, 12
CSA Std C22.2	File LR069014 Type 1, 3, 3S, 4X, 6, 6P, 12
IEC 60529	IP66, IP67, IP68
Temperature Range	(-26°F to +257°F) (-32°C to +125°C)
Flammability Rating	UL94-V0
Self Extinguishing	Non-halogenated, Non-flame propagating
Outdoor Exposure UL746C	(f1) Rated

## W Accessories

Aluminum Back Panels	D_BP	pg. 176
Drain & Breather Vents		pg. 185
Hole Plugs		pg. 187
Assorted Hubs and Cord Grips		pg. 188-189
All Other Accessories		pg. 184-194

ACCESSORIES



### SCREW SIZES & TORQUE VALUES

PRODUCT SIZES	BACK PANEL SCREW SIZE	BACK PANEL RECOMMENDED TORQUE	COVER SCREW SIZE	COVER SCREW RECOMMENDED TORQUE	MOUNTING FOOT SCREW SIZE	MOUNTING FOOT SCREW RECOMMENDED TORQUE	RECOMMENDED MOUNTING FLANGE TORQUE
All Sizes	M6 x 9.5 mm	16 - 20 in-lbs	M6-1.0 x 35 mm	20 - 24 in-lbs	All Sizes	20 - 24 in-lbs	20 - 24 in-lbs

## DuraBoxx® Series – DL Series

CATALOG NUMBER	OVERALL H X W X D	INSIDE A X B X C	MOUNTING E X F	J	K	L	SHIP WEIGHT	PANEL NUMBER
DL18127W	16.54 x 10.63 x 7.22 (420 x 270 x 183)	15.13 x 9.23 x 6.85 (384 x 234 x 174)	12.68 x 7.17 (322 x 182)	6.26 (159)	13.46 (342)	7.95 (202)	5.5 LBS	DL18127BP*
DL18168W	16.54 x 14.57 x 8.43 (420 x 370 x 214)	15.67 x 13.70 x 7.99 (398 x 348 x 203)	13.54 x 11.57 (344 x 294)	7.44 (189)	14.25 (362)	12.24 (311)	9.9 LBS	DL18168BP*
DL24168W	23.63 x 16.54 x 8.43 (600 x 420 x 214)	22.76 x 15.67 x 7.99 (578 x 398 x 203)	20.63 x 13.54 (524 x 344)	7.44 (189)	21.34 (542)	14.21 (361)	15.4 LBS	DL24168BP*

Caution: Metric units are for reference, do not convert.



\*Panel sold separately



# Starke Series







## Starke Series

Proven Protection When “Small Is A Big Advantage!” **Starke Series** is a polycarbonate enclosure series in either opaque (ST) screw cover or clear (STCC) screw cover versions.

The flush sides of the enclosure make it a sought-after OEM design product. Raised bosses accommodate back panel mounting and are successfully used for remote sensor mounting and small electronic controls in any environment.

### Attributes

- Available in 2 cover options
  1. Opaque cover
  2. Clear cover
- Multiple depths available in most sizes
- Resistant to harsh environments
- Flush sides for that perfect fit
- Multiple molded in bosses for a variety of mounting solutions

### Industry Standards

<b>NEMA 250, cULus Listed UL50, UL50e, UL508A</b>	File # E64358 Type 1, 3R, 4, 4X, 12
<b>IEC 60529 Ratings</b>	IP66 Per UL File# E362920
<b>Temperature Range</b>	(-40°F to +212°F) (-40°C to +100°C)
<b>Flammability Rating</b>	UL94-V2
<b>Self Extinguishing</b>	Non-Halogenated
<b>Certifications</b>	cULus, IEC, REACH, RoHS
<b>Chemical Resistance</b>	Full chemical resistance charts listed in appendix
<b>Outdoor UV Exposure</b>	(f1) Rated

### Product Configurations

#### OPAQUE COVER



4 COVER  
SCREWS, LIFT  
OFF COVER

#### CLEAR COVER



4 COVER  
SCREWS, LIFT  
OFF COVER



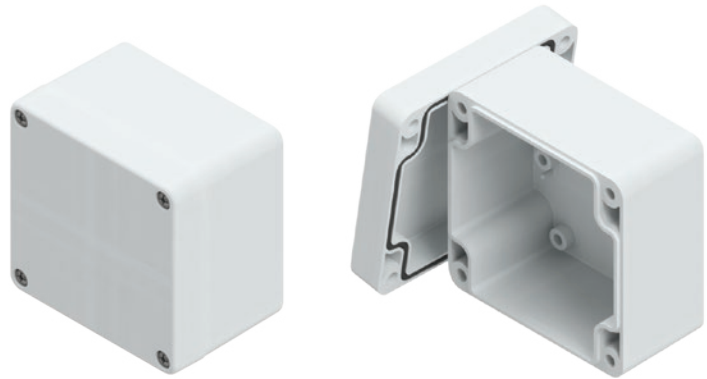
W

# Opaque Cover

W

**CONFIGURATION**

4 cover screws, lift off cover

**W Construction**

<b>Material (Box &amp; Cover)</b>	Polycarbonate
<b>Gasket Material</b>	Poured polyurethane seamless gasket
<b>Cover Screw Material</b>	304 Stainless Steel
<b>Cover Screw Size</b>	Various
<b>Cover Screw Torque</b>	M4: 9-17 in.-lbs., M6: 17-22 in.-lbs.
<b>Color</b>	Available standard in RAL 7035

**W Modifications**

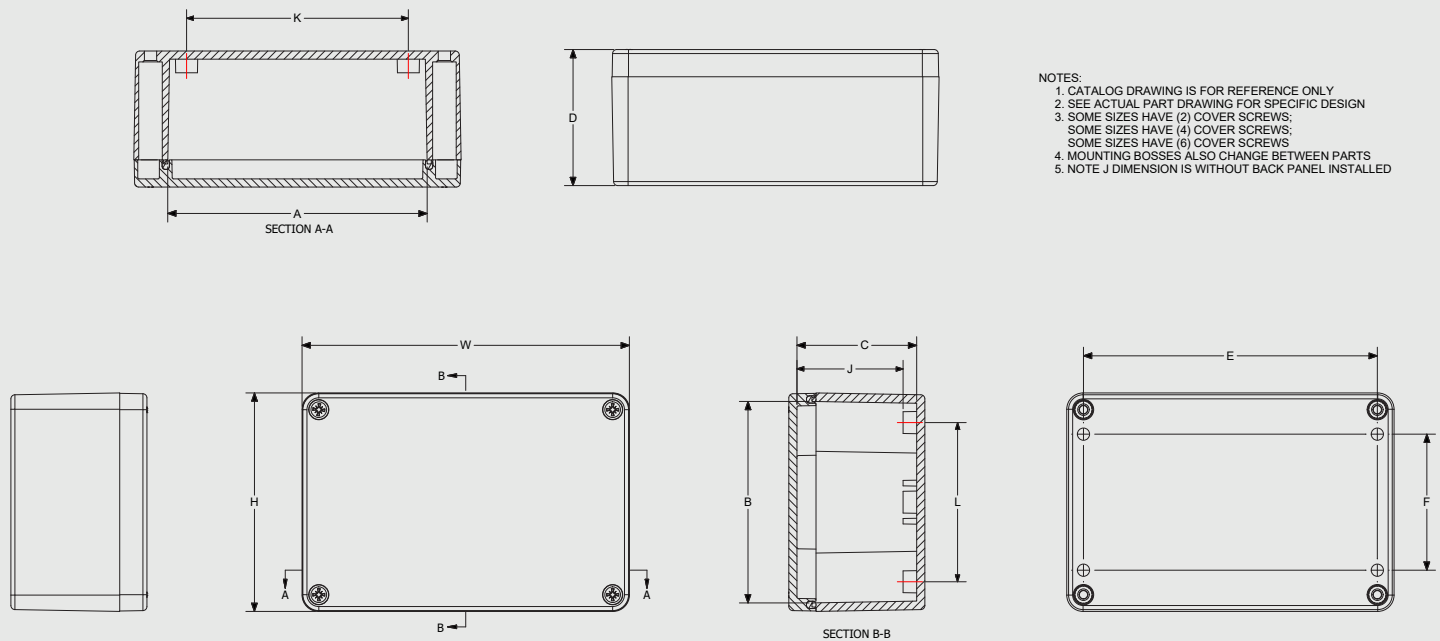
<b>Silk Screening</b>	pg. 21-22
<b>Custom Cutouts/Holes</b>	pg. 21-22

**W Industry Standards**

<b>NEMA 250, cULus Listed UL50, UL50e, UL508A</b>	File # E64358 Type 1, 3R, 4, 4X, 12
<b>IEC 60529 Ratings</b>	IP66 Per UL File# E362920
<b>Temperature Range</b>	(-40°F to +212°F) (-40°C to +100°C)
<b>Flammability Rating</b>	UL94-V2
<b>Self Extinguishing</b>	Non-Halogenated
<b>Chemical Resistance</b>	See chart pg. 198-204
<b>Outdoor Exposure (UL 746C)</b>	(f1) Rated

**W Accessories**

<b>Phenolic Resin Hard Paper Back Panel</b>	BPB__P	pg. 177
<b>All Other Accessories</b>		pg. 184-194



- NOTES:
1. CATALOG DRAWING IS FOR REFERENCE ONLY
  2. SEE ACTUAL PART DRAWING FOR SPECIFIC DESIGN
  3. SOME SIZES HAVE (2) COVER SCREWS;  
SOME SIZES HAVE (4) COVER SCREWS;  
SOME SIZES HAVE (6) COVER SCREWS
  4. MOUNTING BOSSES ALSO CHANGE BETWEEN PARTS
  5. NOTE J DIMENSION IS WITHOUT BACK PANEL INSTALLED

### SCREW SIZES & TORQUE VALUES

PRODUCT SIZES	BACK PANEL SCREW SIZE	BACK PANEL RECOMMENDED TORQUE	COVER SCREW SIZE	COVER SCREW RECOMMENDED TORQUE	RECOMMENDED MOUNTING FLANGE TORQUE
All Sizes	Plastite 48 #8	12-16 IN-LBS	M4	9-17 IN - LBS	25-30 IN-LBS
All Sizes	Plastite 48 #8	12-16 IN-LBS	M6	17-22 IN-LBS	25-30 IN-LBS

## Starke Series – Opaque Cover

CATALOG NUMBER	OVERALL H X W X D	INSIDE A X B X C	MOUNTING E X F	J	K	L	SHIP WEIGHT	PANEL NUMBER
ST060555W	2.56 x 1.97 x 2.17 (65 x 50 x 55)	2.36 x 1.77 x 1.93 (60 x 45 x 49)	2.07 x 1.50 (53 x 38)	1.73 (44)	1.50 (38)	N/A	0.18 lbs.	BPB0605P
ST090603W	3.86 x 2.52 x 1.46 (98 x 64 x 37)	3.54 x 2.20 x 1.93 (90 x 56 x 49)	3.39 x 2.05 (86 x 52)	1.10 (28)	3.19 (81)	N/A	0.25 lbs.	N/A
ST080805W	3.23 x 3.15 x 2.17 (82 x 80 x 55)	3.03 x 2.95 x 1.93 (77 x 75 x 49)	2.76 x 1.97 (70 x 50)	1.73 (44)	2.28 (58)	2.28 (58)	0.32 lbs.	BPB0808P
ST080809W	3.23 x 3.15 x 3.35 (82 x 80 x 85)	3.03 x 2.95 x 3.11 (77 x 75 x 79)	2.76 x 1.97 (70 x 50)	2.91 (74)	1.73 (44)	2.28 (58)	0.40 lbs.	BPB0808P
ST080810W	3.23 x 3.15 x 3.74 (82 x 80 x 95)	3.03 x 2.95 x 3.50 (77 x 75 x 89)	2.76 x 1.97 (70 x 50)	2.91 (74)	1.73 (44)	2.28 (58)	0.44 lbs.	BPB0808P
ST128055W	4.72 x 3.15 x 2.17 (120 x 80 x 55)	4.49 x 2.91 x 1.93 (114 x 74 x 49)	4.25 x 1.97 (108 x 50)	1.73 (44)	3.78 (96)	2.32 (59)	0.39 lbs.	BPB1280P
ST128010W	4.72 x 3.15 x 3.94 (120 x 80 x 100)	4.49 x 2.91 x 3.74 (114 x 74 x 95)	4.25 x 1.97 (108 x 50)	3.58 (91)	3.23 (82)	2.32 (59)	0.55 lbs.	BPB1280P



## Starke Series – Opaque Cover

CATALOG NUMBER	OVERALL H X W X D	INSIDE A X B X C	MOUNTING E X F	J	K	L	SHIP WEIGHT	PANEL NUMBER
ST168055W	6.30 x 3.15 x 2.17 (160 x 80 x 55)	6.10 x 2.91 x 1.93 (155 x 74 x 49)	5.83 x 1.97 (148 x 50)	1.73 (44)	4.80 (122)	2.28 (58)	0.50 lbs.	BPB1680P
ST168090W	6.30 x 3.15 x 3.54 (160 x 80 x 90)	6.10 x 2.91 x 3.31 (155 x 74 x 84)	5.83 x 1.97 (148 x 50)	3.11 (79)	4.80 (122)	2.28 (58)	0.65 lbs.	BPB1680P
ST121255W	4.80 x 4.72 x 2.17 (122 x 120 x 55)	4.57 x 4.49 x 1.97 (116 x 114 x 50)	4.33 x 3.54 (110 x 90)	1.73 (44)	3.31 (84)	3.86 (98)	0.52 lbs.	BPB1212P
ST121275W	4.80 x 4.72 x 2.95 (122 x 120 x 75)	4.57 x 4.49 x 2.72 (116 x 114 x 69)	4.33 x 3.54 (110 x 90)	2.52 (64)	3.31 (84)	3.86 (98)	0.65 lbs.	BPB1212P
ST121211W	4.80 x 4.72 x 4.13 (122 x 120 x 105)	4.57 x 4.49 x 3.94 (116 x 114 x 100)	4.33 x 3.54 (110 x 90)	3.74 (95)	3.31 (84)	3.86 (98)	0.76 lbs.	BPB1212P
ST161255W	6.30 x 4.72 x 2.17 (160 x 120 x 55)	6.06 x 4.69 x 1.93 (154 x 114 x 49)	5.87 x 3.46 (149 x 88)	1.65 (42)	4.76 (121)	3.58 (91)	0.63 lbs.	BPB1612P
ST161290W	6.30 x 4.72 x 3.54 (160 x 120 x 90)	6.06 x 4.69 x 3.31 (154 x 114 x 84)	5.87 x 3.46 (149 x 88)	3.03 (77)	4.76 (121)	3.58 (91)	0.84 lbs.	BPB1612P
ST161214W	6.30 x 4.72 x 5.51 (160 x 120 x 140)	6.06 x 4.69 x 5.24 (154 x 114 x 133)	5.87 x 3.46 (149 x 88)	5.00 (127)	4.76 (121)	3.58 (91)	1.23 lbs.	BPB1612P
ST201275W	7.87 x 4.72 x 2.95 (200 x 120 x 75)	7.64 x 4.69 x 2.68 (194 x 114 x 68)	7.40 x 3.46 (188 x 88)	2.44 (62)	6.30 (160)	3.54 (90)	0.93 lbs.	BPB2012P
ST201290W	7.87 x 4.72 x 3.54 (200 x 120 x 90)	7.64 x 4.69 x 3.27 (194 x 114 x 83)	7.40 x 3.46 (188 x 88)	3.03 (77)	6.30 (160)	3.54 (90)	1.05 lbs.	BPB2012P
ST201510W	7.87 x 5.91 x 3.94 (200 x 150 x 100)	7.64 x 5.67 x 3.70 (194 x 144 x 94)	7.40 x 3.46 (188 x 119)	3.50 (89)	6.30 (160)	4.65 (118)	1.26 lbs.	BPB2015P
STC201513W	7.87 x 5.91 x 4.92 (200 x 150 x 125)	7.64 x 5.67 x 4.69 (194 x 144 x 119)	7.40 x 3.46 (188 x 119)	4.25 (108)	6.30 (160)	4.65 (118)	1.52 lbs.	BPB2015P
ST251690W	9.84 x 6.30 x 3.54 (250 x 160 x 90)	9.61 x 6.06 x 3.31 (244 x 154 x 84)	9.37 x 5.12 (238 x 130)	3.11 (79)	8.35 (212)	5.12 (130)	1.41 lbs.	BPB2516P
ST251611W	9.84 x 6.30 x 4.53 (250 x 160 x 115)	9.61 x 6.06 x 4.29 (244 x 154 x 109)	9.37 x 5.12 (238 x 130)	4.09 (104)	8.39 (213)	5.12 (130)	1.88 lbs.	BPB2516P
ST251612W	9.84 x 6.30 x 4.72 (250 x 160 x 120)	9.61 x 6.06 x 4.49 (244 x 154 x 114)	9.37 x 5.12 (238 x 130)	4.29 (109)	8.35 (212)	5.12 (130)	1.78 lbs.	BPB2516P
ST251615W	9.84 x 6.30 x 5.91 (250 x 160 x 150)	9.61 x 6.06 x 5.67 (244 x 154 x 144)	9.37 x 5.12 (238 x 130)	5.47 (139)	8.35 (212)	5.12 (130)	2.14 lbs.	BPB2516P



# Clear Cover

**CONFIGURATION**  
4 cover screws, lift off cover



## W Construction

Material (Box & Cover)	Polycarbonate
Gasket Material	Poured polyurethane seamless gasket
Cover Screw Material	304 Stainless Steel
Cover Screw Size	Various
Cover Screw Torque	M4: 9 - 17 in.-lbs., M6: 17-22 in.-lbs.
Color	Available standard in RAL 7035

## W Modifications

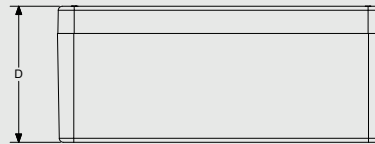
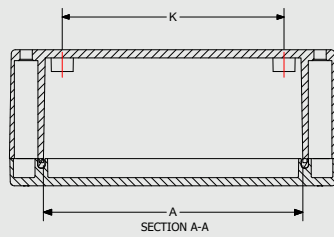
Silk Screening	pg. 21-22
Custom Cutouts/Holes	pg. 21-22

## W Industry Standards

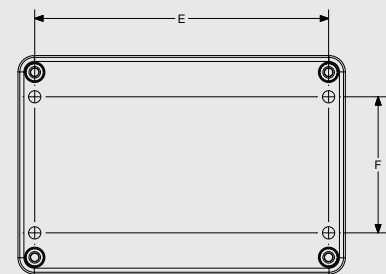
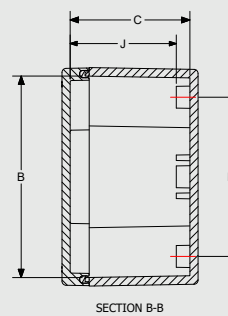
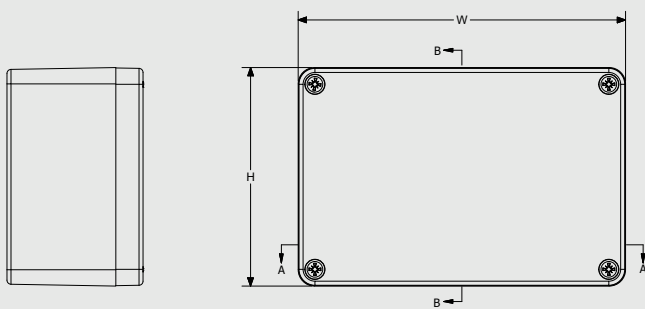
NEMA 250, cULus Listed UL50, UL50e, UL508A	File # E64358 Type 1, 3R, 4, 4X, 12
IEC 60529 Ratings	IP66 Per UL File# E362920
Temperature Range	(-40°F to +212°F) (-40°C to +100°C)
Flammability Rating	UL94-V2
Self Extinguishing	Non-Halogenated
Chemical Resistance	See chart pg. 198-204
Outdoor Exposure (UL 746C)	(f1) Rated

## W Accessories

PANELS	Phenolic Resin Hard Paper Back Panel	BPB__P	pg. 177
	All Other Accessories		pg. 184-194



- NOTES:  
 1. CATALOG DRAWING IS FOR REFERENCE ONLY  
 2. SEE ACTUAL PART DRAWING FOR SPECIFIC DESIGN  
 3. SOME SIZES HAVE (2) COVER SCREWS;  
 SOME SIZES HAVE (4) COVER SCREWS;  
 SOME SIZES HAVE (6) COVER SCREWS  
 4. MOUNTING BOSSES ALSO CHANGE BETWEEN PARTS  
 5. NOTE J DIMENSION IS WITHOUT BACK PANEL INSTALLED



### SCREW SIZES & TORQUE VALUES

PRODUCT SIZES	BACK PANEL SCREW SIZE	BACK PANEL RECOMMENDED TORQUE	COVER SCREW SIZE	COVER SCREW RECOMMENDED TORQUE	RECOMMENDED MOUNTING FLANGE TORQUE
All Sizes	Plastite 48 #8	12-16 IN-LBS	M4	9-17 IN - LBS	25-30 IN-LBS
All Sizes	Plastite 48 #8	12-16 IN-LBS	M6	17-22 IN-LBS	25-30 IN-LBS

## Starke Series – Clear Cover

CATALOG NUMBER	OVERALL H X W X D	INSIDE A X B X C	MOUNTING E X F	J	K	L	SHIP WEIGHT	PANEL NUMBER
STCC060555W	2.56 x 1.97 x 2.17 (65 x 50 x 55)	2.36 x 1.77 x 1.93 (60 x 45 x 49)	2.07 x 1.50 (53 x 38)	1.73 (44)	1.50 (38)	N/A	0.18 lbs.	BPB0605P
STCC090603W	3.86 x 2.52 x 1.46 (98 x 64 x 37)	3.54 x 2.20 x 1.93 (90 x 56 x 49)	3.39 x 2.05 (86 x 52)	1.10 (28)	3.19 (81)	N/A	0.25 lbs.	N/A
STCC080805W	3.23 x 3.15 x 2.17 (82 x 80 x 55)	3.03 x 2.95 x 1.93 (77 x 75 x 49)	2.76 x 1.97 (70 x 50)	1.73 (44)	2.28 (58)	2.28 (58)	0.32 lbs.	BPB0808P
STCC128055W	4.72 x 3.15 x 2.17 (120 x 80 x 55)	4.49 x 2.91 x 1.93 (114 x 74 x 49)	4.25 x 1.97 (108 x 50)	1.73 (44)	3.78 (96)	2.32 (59)	0.39 lbs.	BPB1280P
STCC168090W	6.30 x 3.15 x 3.54 (160 x 80 x 90)	6.10 x 2.91 x 3.31 (155 x 74 x 84)	5.83 x 1.97 (148 x 50)	3.11 (79)	4.80 (122)	2.28 (58)	0.65 lbs.	BPB1680P
STCC121275W	4.80 x 4.72 x 2.95 (122 x 120 x 75)	4.57 x 4.49 x 2.72 (116 x 114 x 69)	4.33 x 3.54 (110 x 90)	2.52 (64)	3.31 (84)	3.86 (98)	0.65 lbs.	BPB1212P



## Starke Series – Clear Cover

CATALOG NUMBER	OVERALL H X W X D	INSIDE A X B X C	MOUNTING E X F	J	K	L	SHIP WEIGHT	PANEL NUMBER
STCC121211W	4.80 x 4.72 x 4.13 (122 x 120 x 105)	4.57 x 4.49 x 3.94 (116 x 114 x 100)	4.33 x 3.54 (110 x 90)	3.74 (95)	3.31 (84)	3.86 (98)	0.76 lbs.	BPB1212P
STCC161255W	6.30 x 4.72 x 2.17 (160 x 120 x 55)	6.06 x 4.69 x 1.93 (154 x 114 x 49)	5.87 x 3.46 (149 x 88)	1.65 (42)	4.76 (121)	3.58 (91)	0.63 lbs.	BPB1612P
STCC161290W	6.30 x 4.72 x 3.54 (160 x 120 x 90)	6.06 x 4.69 x 3.31 (154 x 114 x 84)	5.87 x 3.46 (149 x 88)	3.03 (77)	4.76 (121)	3.58 (91)	0.84 lbs.	BPB1612P
STCC161214W	6.30 x 4.72 x 5.51 (160 x 120 x 140)	6.06 x 4.69 x 5.24 (154 x 114 x 133)	5.87 x 3.46 (149 x 88)	5.00 (127)	4.76 (121)	3.58 (91)	1.23 lbs.	BPB1612P
STCC201275W	7.87 x 4.72 x 2.95 (200 x 120 x 75)	7.64 x 4.69 x 2.68 (194 x 114 x 68)	7.40 x 3.46 (188 x 88)	2.44 (62)	6.30 (160)	3.54 (90)	0.93 lbs.	BPB2012P
STCC201510W	7.87 x 5.91 x 3.94 (200 x 150 x 100)	7.64 x 5.67 x 3.70 (194 x 144 x 94)	7.40 x 3.46 (188 x 119)	3.50 (89)	6.30 (160)	4.65 (118)	1.26 lbs.	BPB2015P
STCC201513W	7.87 x 5.91 x 4.92 (200 x 150 x 125)	7.64 x 5.67 x 4.69 (194 x 144 x 119)	7.40 x 3.46 (188 x 119)	4.25 (108)	6.30 (160)	4.65 (118)	1.52 lbs.	BPB2015P
STCC251612W	9.84 x 6.30 x 4.72 (250 x 160 x 120)	9.61 x 6.06 x 4.49 (244 x 154 x 114)	9.37 x 5.12 (238 x 130)	4.29 (109)	8.35 (212)	5.12 (130)	1.78 lbs.	BPB2516P
STCC251615W	9.84 x 6.30 x 5.91 (250 x 160 x 150)	9.61 x 6.06 x 5.67 (244 x 154 x 144)	9.37 x 5.12 (238 x 130)	5.47 (139)	8.35 (212)	5.12 (130)	2.14 lbs.	BPB2516P



# CF & F Series



CF & F  
Series





## CF & F Series

The **CF and F Series** is built around three enclosure designs. All feature a slim style with flush side walls, while the F Series features an overhang cover style. Two are designed from fiberglass reinforced polyester the third from polycarbonate and feature a continuous polyurethane gasket that provides a complete environmental seal.

These enclosures are ideal for compact or portable control or simply as a small junction box. This streamlined series features unobstructed sidewalls, captive cover screws and a full range of sizes.

The F Series features a small overhang cover but also adds back panel mounting capabilities.

**CF and F Series** enclosures are designed for general electrical and electronic applications and any application that has associated environmental concerns.

### Product Configurations

CF SERIES	CF SERIES POLYCARBONATE	F SERIES
4 COVER SCREWS, LIFT OFF COVER	4 COVER SCREWS, LIFT OFF COVER	4 COVER SCREWS, LIFT OFF COVER

### Attributes

- Memory retaining continuous polyurethane gasket
- Captive stainless steel cover screws
- Chemically resistant fiberglass reinforced polyester
- Submersible, non-corrosion environmental design
- High impact resistance
- Polycarbonate option available on select sizes

### Industry Standards

<b>NEMA 250, UL Listed UL50, UL50e, UL508A</b>	File E64358 Type 1, 3R, 4X, 6P, 12
<b>CSA Std C22.2</b>	File LR069014 Type 1, 3R, 4X, 6P, 12
<b>IEC 60529</b>	UL File E362920 IP 66, IP67, IP68
<b>UL1741</b>	File E333478 (Fiberglass only)
<b>Plenum Space (UL2043)</b>	Yes (Fiberglass only)
<b>Temperature Range (Fiberglass)</b>	(-76°F to +274°F) (-60°C to +134°C)
<b>Temperature Range (Polycarbonate)</b>	(-40°F to +248°F) (-40°C to +120°C)
<b>Flammability Rating</b>	UL94-5V
<b>Impact Rating</b>	IK10 (Fiberglass only)
<b>Self Extinguishing</b>	Non-halogenated, non-flame propagating
<b>Chemical Resistance</b>	Full chemical resistance charts listed in appendix
<b>NFPA No. 101 Flame Spread</b>	Class A (1)
<b>Outdoor UV Exposure (UL746C)</b>	(f1) Rated



CF

# CF Series

CF

**CONFIGURATION**

4 cover screws, lift off cover



## CF Construction

<b>Material</b>	SolarGuard® – Hot compression molded fiberglass reinforced polyester (thermoset)
<b>Gasket</b>	Poured polyurethane seamless gasket provides watertight, dust-tight environmental seal
<b>Cover Screws</b>	Recessed captive stainless steel screws
<b>Stainless Steel Hardware</b>	300 Series stainless used on all external hardware
<b>Enclosure Mounting</b>	Mounting wells located under the cover/outside the gasket area
<b>Soft Edge Design</b>	Rounded edges, minimal protrusions or exposed pocket areas for assembly of dust and debris
<b>Color</b>	Available in standard glacier grey (Pantone 428C)

## CF Modifications

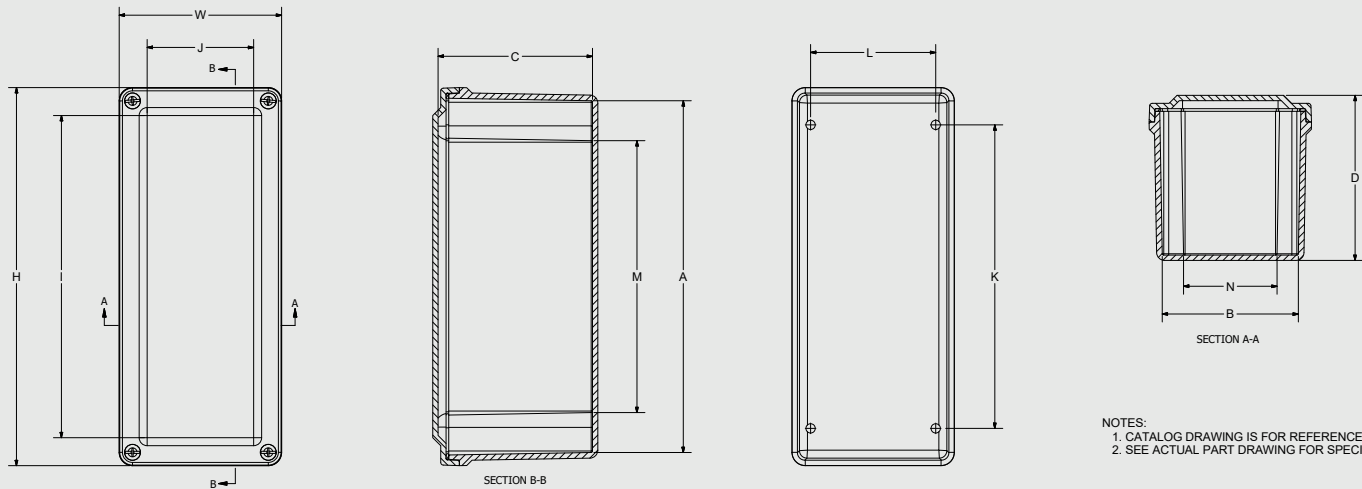
<b>Custom Colors</b>	pg. 21-22
<b>Silk Screening</b>	pg. 21-22
<b>EMI/RFI Shielding</b>	pg. 21-22
<b>Custom Window</b>	pg. 21-22
<b>Custom Cutouts/Holes</b>	pg. 21-22

## CF Industry Standards

<b>NEMA 250, UL Listed UL50, UL50e, UL508A</b>	File E64358 Type 1, 3R, 4X, 6P, 12
<b>CSA Std 22.2</b>	File LR069014 Type 1, 3R, 4X, 6P, 12
<b>IEC 60529</b>	UL File E362920 IP 66, IP67, IP68
<b>UL1741</b>	File E333478
<b>Plenum Space (UL2043) Compliant</b>	Yes
<b>Temperature Range</b>	(-76°F to +274°F) (-60°C to +134°C)
<b>Flammability Rating</b>	UL94-5V
<b>Impact Rating</b>	IK10
<b>Self Extinguishing</b>	Non-halogenated, non-flame propagating
<b>Chemical Resistance</b>	Full chemical resistance charts listed in appendix
<b>NFPA No. 101 Flame Spread</b>	Class A (1)
<b>Outdoor Exposure (UL746C)</b>	(f1) Rated

## CF Accessories

BACK PANELS	<b>Aluminum</b>	BP_AL	pg. 174-175
	<b>Fiberglass</b>	BP_FG	pg. 174-175
	<b>Stainless Steel</b>	BP_SS	pg. 174-175
	<b>Carbon Steel</b>	BP_CS	pg. 174-175



### SCREW SIZES & TORQUE VALUES

PRODUCT SIZES	BACK PANEL SCREW SIZE	BACK PANEL RECOMMENDED TORQUE	COVER SCREW SIZE	COVER SCREW RECOMMENDED TORQUE	RECOMMENDED MOUNTING FLANGE TORQUE
All Sizes – CF Series	N/A	N/A	#10-24 x 3/4	20 - 24 in-lbs	45 in-lbs max

## CF Series

CATALOG NUMBER	OVERALL H X W X D	INSIDE A X B X C	I	J	K	L	M	N	SHIP WEIGHT
*CF332	3.72 x 3.63 x 2.95 (95 x 92 x 75)	3.13 x 3.03 x 2.70 (79 x 77 x 69)	0 (0)	0 (0)	2.31 (59)	2.75 (70)	1.59 (40)	2.03 (52)	0.9 lbs. (112)
CF532	5.97 x 3.63 x 3.14 (152 x 92 x 80)	5.38 x 3.03 x 2.87 (137 x 77 x 73)	4.72 (120)	2.38 (61)	4.56 (116)	2.75 (70)	3.84 (98)	2.03 (52)	1.2 lbs. (169)
CF644	6.63 x 3.81 x 3.89 (168 x 97 x 99)	6.00 x 3.19 x 3.63 (153 x 81 x 92)	5.31 (135)	2.50 (64)	4.88 (124)	2.94 (75)	4.13 (105)	2.19 (56)	1.5 lbs. (186)
CF832	8.41 x 3.63 x 3.14 (214 x 92 x 80)	7.82 x 3.03 x 2.87 (199 x 77 x 73)	7.16 (182)	2.38 (60)	7.00 (178)	2.75 (70)	6.28 (160)	2.03 (52)	1.5 lbs. (231)
CF844	8.88 x 3.81 x 3.89 (225 x 97 x 99)	8.26 x 3.19 x 3.63 (210 x 81 x 92)	7.56 (192)	2.50 (64)	7.13 (181)	2.94 (75)	6.38 (162)	2.19 (56)	1.8 lbs. (243)
CF932	9.35 x 3.63 x 3.14 (237 x 92 x 80)	8.75 x 3.03 x 2.87 (222 x 77 x 73)	8.10 (206)	2.38 (60)	7.94 (202)	2.75 (70)	7.22 (183)	2.03 (52)	1.6 lbs. (256)
CF1144	11.13 x 3.81 x 3.89 (283 x 97 x 99)	10.51 x 3.19 x 3.63 (267 x 81 x 92)	9.81 (249)	2.50 (64)	9.37 (238)	2.94 (75)	8.63 (219)	2.19 (56)	2.1 lbs. (300)
CF1432	13.78 x 3.63 x 3.14 (350 x 92 x 80)	13.19 x 3.03 x 2.87 (335 x 77 x 73)	12.53 (318)	2.38 (60)	12.37 (314)	2.75 (70)	11.66 (296)	2.03 (52)	2.1 lbs. (368)
CF1732	17.35 x 3.63 x 3.14 (441 x 92 x 80)	16.75 x 3.03 x 2.87 (426 x 77 x 73)	16.10 (409)	2.38 (60)	15.94 (405)	2.75 (70)	15.22 (387)	2.03 (52)	2.8 lbs. (458)

All measures are in inches, items in parentheses are in millimeters.



\*Flat Cover



# Polycarbonate CF Series

CFPC

**CONFIGURATION**

4 cover screws, lift off cover

**CFPC Construction**

<b>Material</b>	Polycarbonate with UV inhibitors
<b>Gasket</b>	Poured polyurethane seamless gasket provides watertight, dust-tight environmental seal
<b>Cover Screws</b>	Recessed captive stainless steel screws
<b>Stainless Steel Hardware</b>	300 Series stainless used on all external hardware
<b>Enclosure Mounting</b>	Mounting wells located under the cover/outside the gasket area
<b>Soft Edge Design</b>	Rounded edges, minimal protrusions or exposed pocket areas for assembly of dust and debris
<b>Color</b>	Available in standard RAL 7541C

**CFPC Modifications**

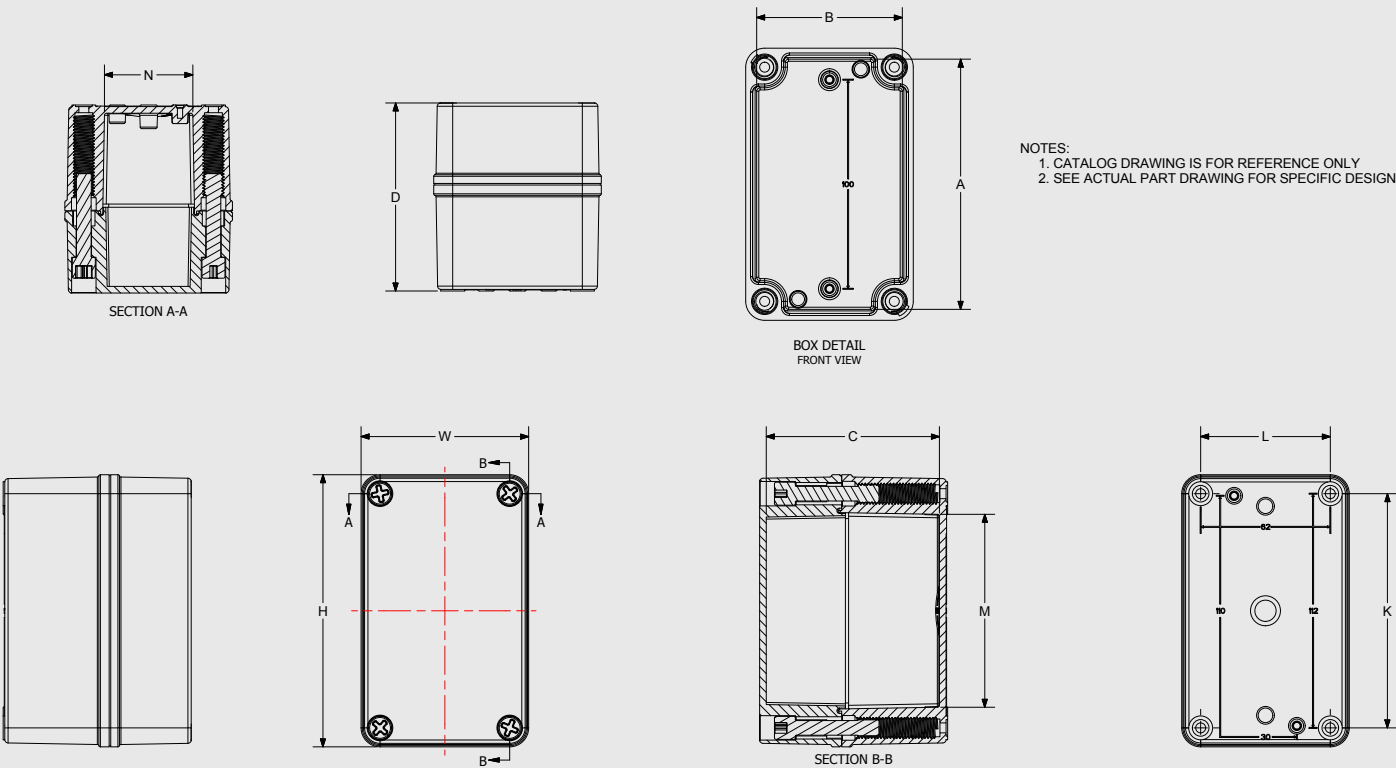
<b>Custom Colors</b>	pg. 21-22
<b>Silk Screening</b>	pg. 21-22
<b>EMI/RFI Shielding</b>	pg. 21-22
<b>Custom Window</b>	pg. 21-22
<b>Custom Cutouts/Holes</b>	pg. 21-22

**CFPC Industry Standards**

<b>NEMA 250, cULus Listed UL50, UL50e, UL508A</b>	File E64358 Type 1, 3R, 4X, 6P, 12
<b>IEC 60529</b>	UL File E362920 IP 66, IP67, IP68
<b>UL1741</b>	File E333478
<b>Plenum Space (UL2043) Compliant</b>	Yes
<b>Temperature Range</b>	(-40° F to +248° F) (-40° C to +120° C)
<b>Flammability Rating</b>	UL94-5V
<b>Self Extinguishing</b>	Non-halogenated, non-flame propagating
<b>Chemical Resistance</b>	Full chemical resistance charts listed in appendix
<b>NFPA No. 101 Flame Spread</b>	Class A (1)
<b>Outdoor Exposure UL746C</b>	(f1) Rated

**CFPC Accessories**

BACK PANELS	<b>Aluminum</b>	BP_AL	pg. 174-175
	<b>Fiberglass</b>	BP_FG	pg. 174-175
	<b>Stainless Steel</b>	BP_SS	pg. 174-175
	<b>Carbon Steel</b>	BP_CS	pg. 174-175



SCREW SIZES & TORQUE VALUES

PRODUCT SIZES	BACK PANEL SCREW SIZE	BACK PANEL RECOMMENDED TORQUE	COVER SCREW SIZE	COVER SCREW RECOMMENDED TORQUE	RECOMMENDED MOUNTING FLANGE TORQUE
All Sizes – CFPC Series	N/A	N/A	Custom Screw	16-20 in-lbs	25 - 30 in-lbs

CFPC Series

CATALOG NUMBER	HOLE CONFIG.	OVERALL H X W X D	INSIDE A X B X C	K	L	M	N	P	HOLE DIA.	SHIP WEIGHT
CFPC432	Blank	4.34 x 3.16 x 2.79 (110 x 80 x 71)	3.92 x 2.74 x 2.51 (100 x 70 x 64)	3.62 (92)	2.44 (62)	2.85 (72)	1.66 (42)	NA	NA	CF
CFPC533	Blank	5.12 x 3.16 x 3.54 (130 x 80 x 90)	7.71 x 2.74 x 3.26 (130 x 80 x 90)	4.41 (112)	2.44 (62)	3.63 (92)	1.66 (42)	NA	NA	CF

All measures are in inches, items in parentheses are in millimeters.



\*Flat Cover



# F Series

**CONFIGURATION**

4 cover screws, lift off cover



## F Construction

<b>Material</b>	SolarGuard® – Hot compression molded fiberglass reinforced polyester (thermoset)
<b>Gasket</b>	Poured polyurethane seamless gasket provides watertight, dust-tight environmental seal
<b>Cover screws</b>	Captive stainless steel screws
<b>Stainless Steel Hardware</b>	300 Series stainless used on all external hardware
<b>Enclosure Mounting</b>	Mounting wells located under the cover/outside the gasket area.
<b>Panel Mounting</b>	Raised bosses with brass inserts accepting 10-32 screws for optional panel mounting
<b>Soft Edge Design</b>	Rounded edges, minimal protrusions or exposed pocket areas for assembly of dust and debris
<b>Color</b>	Available in standard glacier grey (Pantone 428C)

## F Modifications

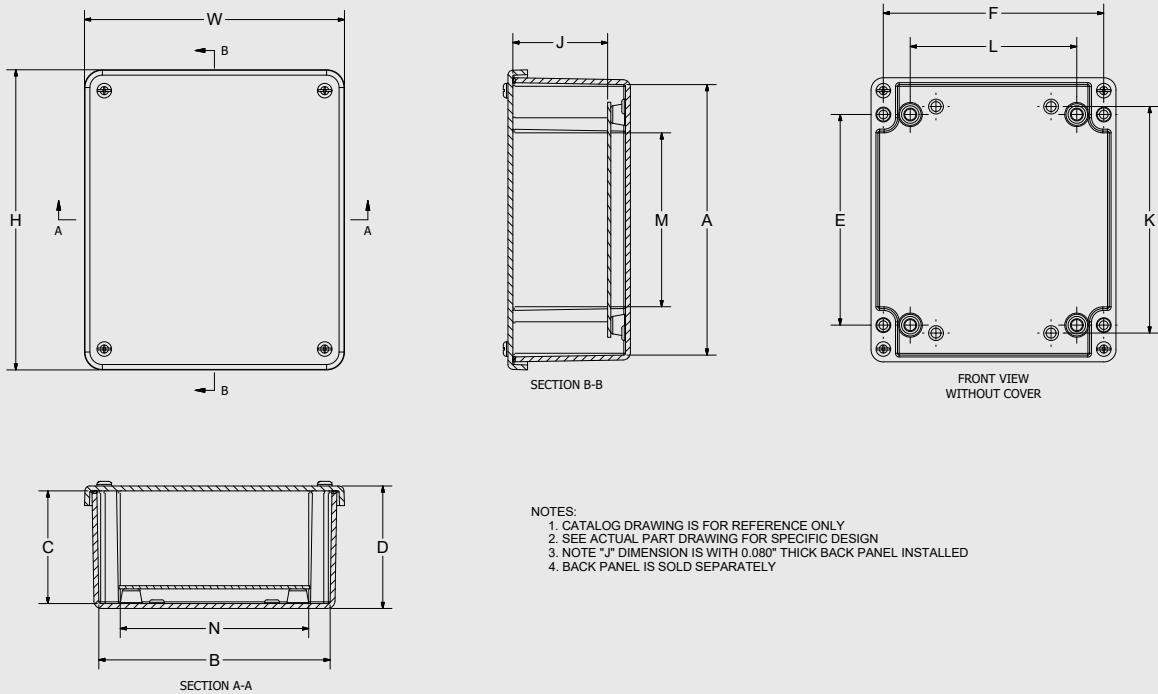
<b>Custom Colors</b>	pg. 21-22
<b>Silk Screening</b>	pg. 21-22
<b>EMI/RFI Shielding</b>	pg. 21-22
<b>Custom Window</b>	pg. 21-22
<b>Custom Cutouts/Holes</b>	pg. 21-22

## F Industry Standards

<b>NEMA 250, UL Listed UL50, UL50e, UL508A</b>	File E64358 Type 1, 3R, 4X, 6P, 12
<b>CSA Std 22.2</b>	File LR069014 Type 1, 3R, 4X, 6P, 12
<b>IEC 60529</b>	UL File E362920 IP 66, IP67, IP68
<b>UL1741</b>	File E333478
<b>Plenum Space (UL2043) Compliant</b>	Yes
<b>Temperature Range</b>	(-76°F to +274°F) (-60°C to +134°C)
<b>Flammability Rating</b>	UL94-5V
<b>Impact Rating</b>	IK10
<b>Self Extinguishing</b>	Non-halogenated, non-flame propagating
<b>Chemical Resistance</b>	Full chemical resistance charts listed in appendix
<b>NFPA No. 101 Flame Spread</b>	Class A (1)
<b>Outdoor Exposure UL746C</b>	(f1) Rated

## F Accessories

BACK PANELS	<b>Aluminum</b>	BP_AL	pg. 174-175
	<b>Fiberglass</b>	BP_FG	pg. 174-175
	<b>Stainless Steel</b>	BP_SS	pg. 174-175
	<b>Carbon Steel</b>	BP_CS	pg. 174-175



- NOTES:  
1. CATALOG DRAWING IS FOR REFERENCE ONLY  
2. SEE ACTUAL PART DRAWING FOR SPECIFIC DESIGN  
3. NOTE "J" DIMENSION IS WITH 0.080" THICK BACK PANEL INSTALLED  
4. BACK PANEL IS SOLD SEPARATELY

SCREW SIZES & TORQUE VALUES

PRODUCT SIZES	BACK PANEL SCREW SIZE	BACK PANEL RECOMMENDED TORQUE	COVER SCREW SIZE	COVER SCREW RECOMMENDED TORQUE	RECOMMENDED MOUNTING FLANGE TORQUE
All Sizes	N/A	N/A	#10-24 x 3/4	20 - 24 in-lbs	45 in-lbs max

F Series

CATALOG NUMBER	OVERALL H X W X D	INSIDE A X B X C	MOUNTING E X F	J	K	L	M	N	SHIP WEIGHT	PANEL NUMBER
F763	7.63 x 6.63 x 3.19 (194 x 168 x 81)	6.90 x 5.90 x 2.88 (175 x 150 x 73)	5.37 x 5.63 (137 x 143)	2.48 (63)	5.37 (137)	4.25 (108)	4.52 (115)	4.9 (124)	2.5 lbs.	BP76*
F963	9.87 x 6.63 x 3.19 (251 x 168 x 81)	9.15 x 5.90 x 2.88 (232 x 150 x 73)	7.62 x 5.63 (194 x 143)	2.48 (63)	7.62 (194)	4.25 (108)	6.77 (172)	4.9 (124)	2.6 lbs.	BP96*

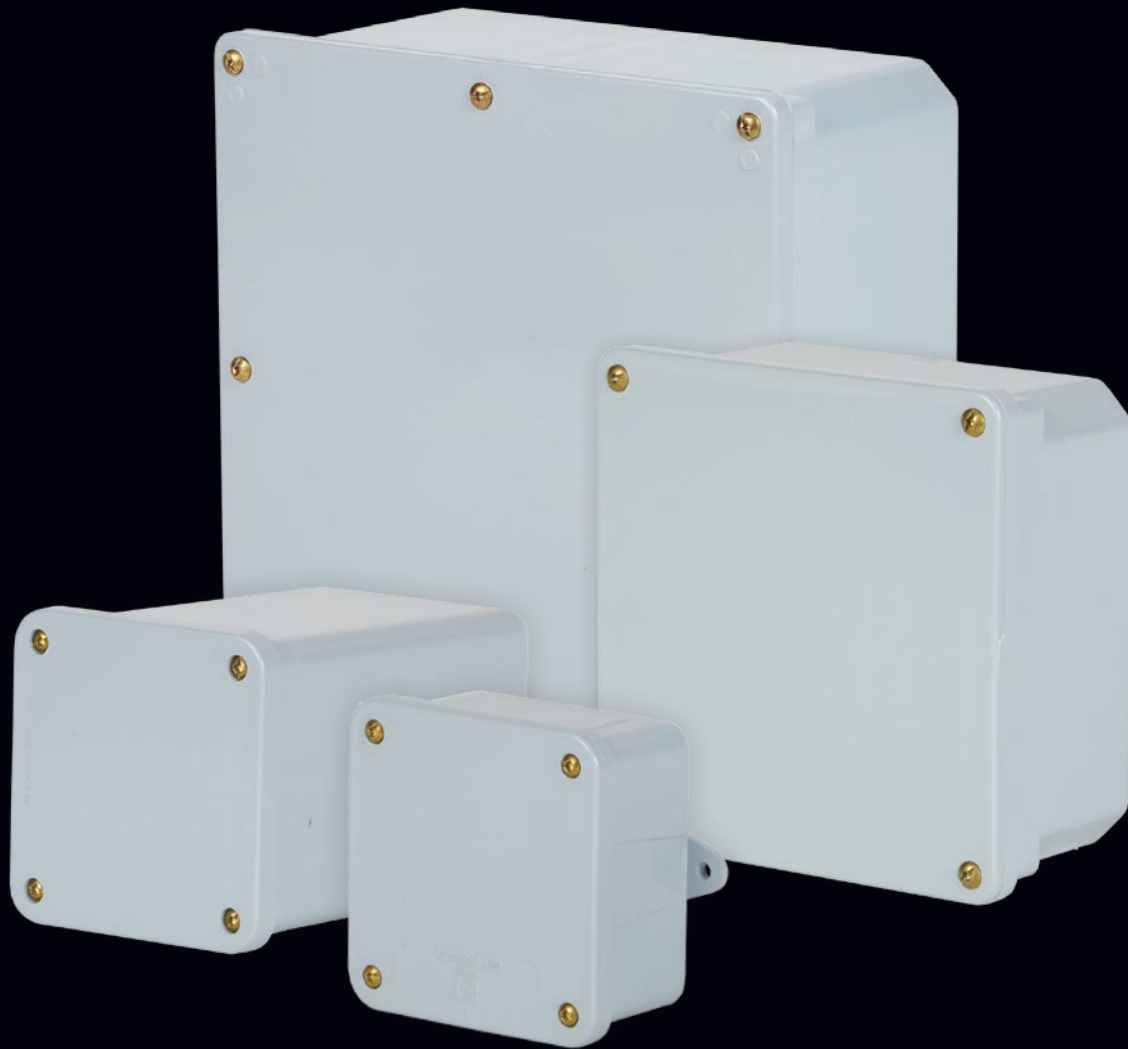
All measures are in inches, items in parentheses are in millimeters.



\*Panel sold separately



# NewSentry® Series



NewSentry®  
Series





## NewSentry® Series

The **NewSentry® Series** is a range of corrosion resistant, watertight PVC enclosures featuring ten sizes of simple screw down covers. The enclosures are a perfect complement to our non-metallic offering when used as junction boxes and small auxiliary enclosures.

Each enclosure is assembled with a PVC gasket that ensures compatibility with the enclosure's substrate and, through cellular resiliency in stretching and compressing, enables longevity in the interaction between cover and gasket spanning a wide potential temperature range.

Mounting feet are integral on smaller sizes and included as bolt-ons with all larger enclosures. Captive brass cover screws meet threaded brass inserts to secure covers and provide assurance against wear and tear from repeated use.

**NewSentry® Series** enclosures are designed for general electrical and electronic applications and any application that has associated environmental concerns.

### Attributes

- Memory retaining seamless PVC gasket
- Corrosion resistant PVC material
- Threaded inserts and captive brass cover screws
- Integral mounting feet available on some models

### Industry Standards

<b>NEMA 250, UL Listed UL50, UL50e, UL508A</b>	File E190960 Type 1, 2, 3, 4, 4X, 12, 13
<b>CSA Std C22.2 No. 85</b>	File 207025 Type 1, 2, 3, 4, 4X, 12, 13
<b>Temperature Range</b>	(-4°F to +140°F) (-20°C to +60°C)
<b>Flammability Rating</b>	UL94-V0
<b>Self Extinguishing</b>	Non-flame propagating
<b>Chemical Resistance</b>	Full chemical resistance charts listed in appendix

### Product Configurations

#### NEWSENTRY® SERIES



4 COVER  
SCREWS, LIFT  
OFF COVER



PVC

# PVC

PVC

## CONFIGURATION

4 cover screws, lift off cover



### PVC Construction

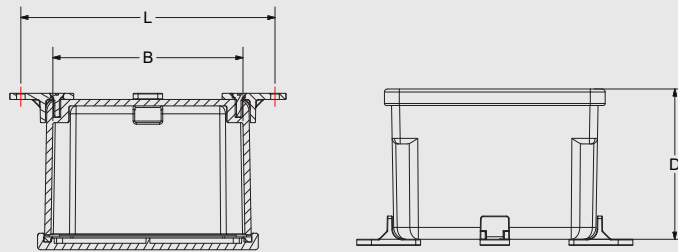
<b>Material</b>	Polyvinyl chloride (PVC)
<b>Gasket</b>	PVC seamless gasket provides watertight, dust-tight environmental seal
<b>Brass Screws</b>	Screw down to brass inserts
<b>Mounting Feet</b>	Built in on designated models. Add on feet available for other models
<b>Soft Edge Design</b>	Rounded edges, minimal protrusions or exposed pocket areas for assembly of dust and debris

### PVC Modifications

<b>Silk Screening</b>	pg. 21-22
<b>Custom Cutouts/Holes</b>	pg. 21-22

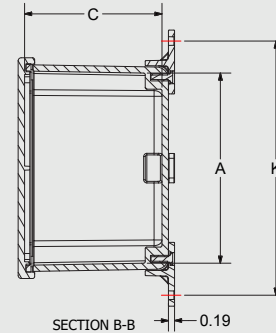
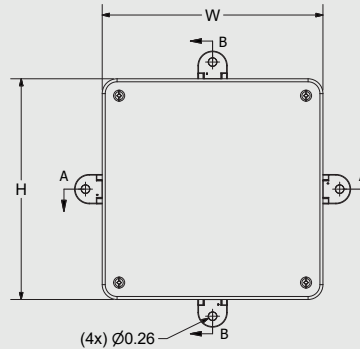
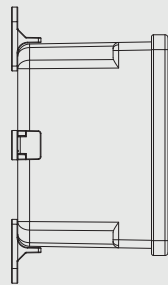
### PVC Industry Standards

<b>NEMA 250, UL Listed UL50, UL50e, UL508A</b>	File E190960 Type 1, 2, 3, 4, 4X, 12, 13
<b>CSA Std C22.2 No. 85</b>	File 207025 Type 1, 2, 3, 4, 4X, 12, 13
<b>Temperature Range</b>	(-4°F to +140°F) (-20°C to +60°C)
<b>Flammability Rating</b>	UL94-V0
<b>Self Extinguishing</b>	Non-flame propagating
<b>Chemical Resistance</b>	Full chemical resistance charts listed in appendix



SECTION A-A

- NOTES:  
1. CATALOG DRAWING IS FOR REFERENCE ONLY  
2. SEE ACTUAL PART DRAWING FOR SPECIFIC DESIGN



SECTION B-B

### SCREW SIZES & TORQUE VALUES

PRODUCT SIZES	BACK PANEL SCREW SIZE	BACK PANEL RECOMMENDED TORQUE	COVER SCREW SIZE	COVER SCREW RECOMMENDED TORQUE	MOUNTING FOOT SCREW SIZE	MOUNTING FOOT SCREW RECOMMENDED TORQUE
4 x 4 x 2 to 6 x 6 x 6	N/A	N/A	#8-32	16-20 in-lbs	10-16 Hi-Lo	30 in-lbs
8 x 8 x 4 to 12 x 12 x 6	N/A	N/A	#8-32	16-20 in-lbs	1/4-15 Hi-Lo	40 in-lbs

## NewSentry® Series – PVC

CATALOG NUMBER	OVERALL H X W X D	INSIDE A X B X C	K	L	F	SHIP WEIGHT
J442PVC*	4.03 x 4.03 x 2.42 (102 x 102 x 61)	3.66 x 3.66 x 2.00 (93 x 93 x 51)	4.63 (118)	N/A	8-32	0.60 lbs.
J444PVC	4.04 x 4.04 x 4.50 (103 x 103 x 114)	3.60 x 3.60 x 4.02 (91 x 91 x 102)	5.64 (143)	N/A	8-32	1.11 lbs.
J446PVC	4.02 x 4.02 x 6.58 (102 x 102 x 167)	3.59 x 3.59 x 6.02 (91 x 91 x 153)	5.49 (139)	N/A	8-32	1.40 lbs.
J552PVC*	5.00 x 5.00 x 2.33 (127 x 127 x 59)	4.61 x 4.61 x 1.85 (117 x 117 x 47)	5.66 (144)	N/A	8-32	0.90 lbs.
J664PVC	6.85 x 6.85 x 4.57 (174 x 174 x 116)	5.96 x 5.96 x 4.03 (151 x 151 x 102)	7.94 (202)	7.94 (202)	10-32	2.12 lbs.
J666PVC	6.85 x 6.85 x 6.58 (174 x 174 x 167)	5.92 x 5.92 x 6.04 (150 x 150 x 153)	7.96 (202)	7.96 (202)	10-32	2.72 lbs.
J884PVC	8.96 x 8.96 x 4.62 (228 x 228 x 117)	8.05 x 8.05 x 4.06 (204 x 204 x 103)	10.49 (266)	10.49 (266)	1/4-20	3.77 lbs.
J887PVC	9.15 x 9.15 x 7.65 (232 x 232 x 195)	8.02 x 8.02 x 7.06 (204 x 204 x 179)	10.49 (266)	10.49 (266)	1/4-20	5.10 lbs.
J12124PVC	12.94 x 12.94 x 4.70 (329 x 329 x 119)	11.92 x 11.92 x 4.00 (303 x 303 x 102)	14.46 (367)	14.46 (367)	1/4-20	8.50 lbs.
J12126PVC	12.94 x 12.94 x 6.64 (329 x 329 x 169)	11.91 x 11.91 x 6.00 (303 x 303 x 152)	14.46 (367)	14.46 (367)	1/4-20	9.25 lbs.

All measures are in inches, items in parentheses are in millimeters.  
F = Threaded brass insert size.

\*Molded in mounting feet



# Electrical Equipment Manufacturing

*“These Stahlin boxes were chosen instead because they are lighter weight, easier to handle and install, and will hold up better than the stainless steel in this environment.’ Facing a challenge in a particularly corrosive environment, Brian’s experience with the product shows that the Stahlin enclosure provides ample resistance against corrosion: ‘I have been using Stahlin boxes for 8 years and have been pleased with the performance of the enclosures and why Stahlin was chosen for this desalination project.’”*

– **Brian**, Project Manager  
Leading Electrical and Data  
Communications Contractor

Read more at: [stahlin.com/industries](https://stahlin.com/industries)