



Operator Interface



PushButton Series



PushButton
Series



PushButton Series

The **PushButton Series** includes two separate enclosure designs, an in-line style and a multi-hole style configuration. The in-line includes a fiberglass and polycarbonate option while the multi-hole is designed for fiberglass. All feature a continuous polyurethane gasket that provides a complete environmental seal. A full metal grounding strap is furnished with each configuration for ease of bonding.

Designed as a true pushbutton station, the in-line enclosure does not offer a provision for panel mounting. Unobstructed side-walls, captive stainless steel cover screws and a full range of sizes makes this a versatile offering. These unique in-line enclosures will house pushbuttons, switches and pilot lights in both 30mm and 22mm configurations.

The alternate configuration is the multi-hole design which has a integral flange mount and back panel capabilities. This series is ideal for high density pushbutton mounting and can accommodate up to nine operators on a single cover. This multi-hole design is compatible with 30mm configuration components.

PushButton Series enclosures are designed for general electrical and electronic applications and any application that has associated environmental concerns. Custom hole configurations are available upon request. Please consult factory.

Product Configurations

30MM IN-LINE	22MM IN-LINE	30MM MULTI-HOLE	POLYCARBONATE 30MM; 22MM
4 COVER SCREWS, LIFT OFF COVER	4 COVER SCREWS, LIFT OFF COVER	4 COVER SCREWS, LIFT OFF COVER	4 COVER SCREWS, LIFT OFF COVER

Attributes

- Flush cover design
- Memory retaining continuous polyurethane gasket
- Captive cover screws
- Full metal grounding strap (strap included on fiberglass only)
- Notched key hole design
- Chemically resistant Non-Metallic materials
- Non-corrosion environmental design
- Available in 30mm and 22mm configurations

Industry Standards

NEMA 250, UL Listed UL50, UL50e, UL508A	File E64358 Type 1, 3, 4X, 6P, 12
CSA Std 22.2	File LR069014 Type 1, 3, 4X, 6P, 12
IEC 60529	UL File E362920 IP 66, IP67, IP68
Plenum Space (UL2043) Compliant	Yes
Temperature Range (Fiberglass)	(-76°F to +274°F) (-60°C to +134°C)
Temperature Range (Polycarbonate)	(-40°F to +248°F) (-40°C to +120°C)
Flammability Rating	UL94-5V
Impact Rating	IK10
Self Extinguishing	Non-halogenated, non-flame propagating
Chemical Resistance	Full chemical resistance charts listed in appendix
NFPA No. 101 Flame Spread	Class A (1)
Outdoor Exposure UL746C	(f1) Rated



CF

30mm In-line

CF

CONFIGURATION

4 cover screws, lift off cover



CF Construction

Material	SolarGuard® – Hot compression molded fiberglass reinforced polyester (thermoset)
Gasket	Poured polyurethane seamless gasket provides watertight, dust-tight environmental seal
Cover Screws	Recessed captive stainless steel screws
Stainless Steel Hardware	300 Series stainless used on all external hardware
Enclosure Mounting	Mounting wells located under the cover, outside gasket area
Soft Edge Design	Rounded edges, minimal protrusions or exposed pocket areas for assembly of dust and debris
Color	Available standard glacier grey (PMS 428C)

CF Modifications

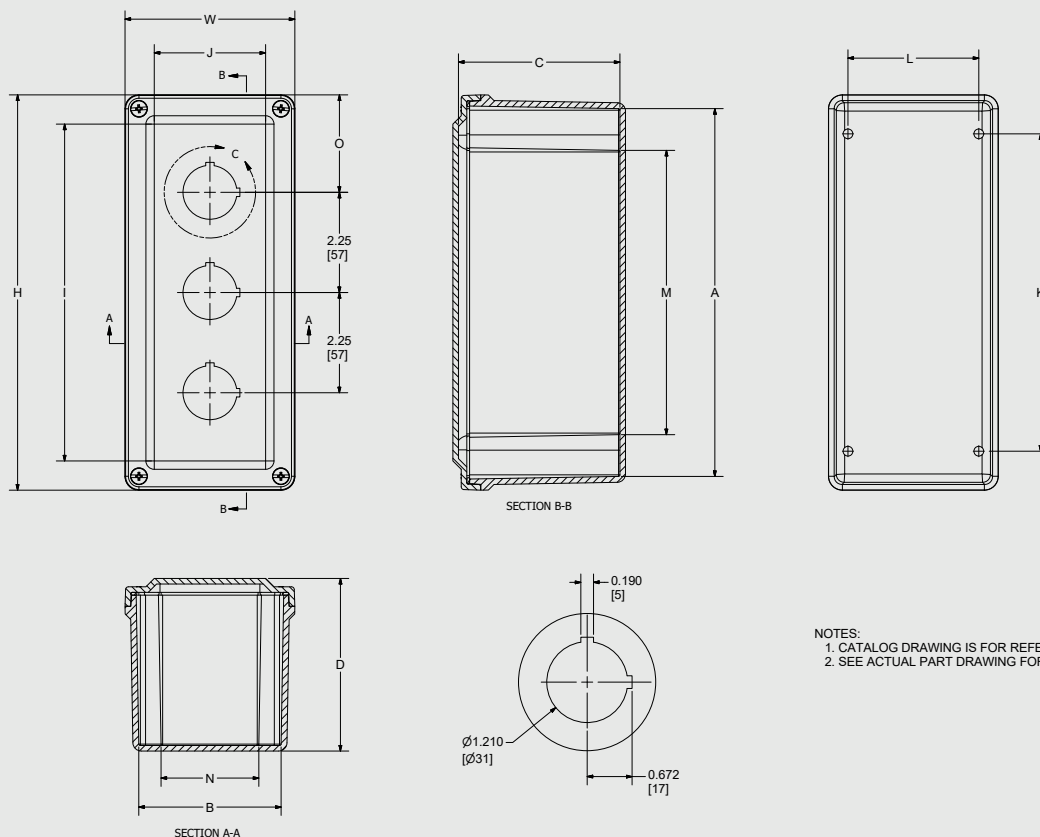
Custom Colors	pg. 21-22
Custom Painting	pg. 21-22
Silk Screening	pg. 21-22
Custom Cutouts/Holes	pg. 21-22

CF Industry Standards

NEMA 250, UL Listed UL50, UL50e, UL508A	File E64358 Type 1, 3R, 4X, 6P, 12
CSA Std C22.2	File LR069014 Type 1, 3R, 4X, 6P, 12
IEC 60529	UL File E362920 IP 66, IP67, IP68
Plenum Space (UL2043) Compliant	Yes
Temperature Range	(-76°F to +274°F) (-60°C to +134°C)
Flammability Rating	UL94-5V
Impact Rating	IK10
Self Extinguishing	Non-flame propagating
Chemical Resistance	Full chemical resistance charts listed in appendix
NFPA No. 101 Flame Spread	Class A (1)
Outdoor Exposure UL746C	(f1) Rated

CF Accessories

Mounting Feet	pg. 192
----------------------	---------



NOTES:
1. CATALOG DRAWING IS FOR REFERENCE ONLY
2. SEE ACTUAL PART DRAWING FOR SPECIFIC DESIGN

SCREW SIZES & TORQUE VALUES

PRODUCT SIZES	BACK PANEL SCREW SIZE	BACK PANEL RECOMMENDED TORQUE	COVER SCREW SIZE	COVER SCREW RECOMMENDED TORQUE	RECOMMENDED MOUNTING FLANGE TORQUE
All Sizes	N/A	N/A	#10-24 x 3/4	20 - 24 in-lbs	45 in-lbs max

PushButton Series – 30mm In-line

CATALOG NUMBER	OVERALL H X W X D	INSIDE A X B X C	I	J	K	L	M	N	O	SHIP WEIGHT
CF1PB	6.63 x 3.81 x 3.89 (168 x 97 x 99)	6.00 x 3.19 x 3.63 (153 x 81 x 92)	5.31 (135)	2.5 (64)	4.88 (124)	2.94 (75)	4.13 (105)	2.19 (56)	3.31 (84)	1.5 lbs.
CF2PB	6.63 x 3.81 x 3.89 (168 x 97 x 99)	6.00 x 3.19 x 3.63 (153 x 81 x 92)	5.31 (135)	2.5 (64)	4.88 (124)	2.94 (75)	4.13 (105)	2.19 (56)	2.19 (56)	1.5 lbs.
CF3PB	8.88 x 3.81 x 3.89 (225 x 97 x 99)	8.26 x 3.19 x 3.63 (210 x 81 x 92)	7.56 (192)	2.5 (64)	7.13 (181)	2.94 (75)	6.38 (162)	2.19 (56)	2.19 (56)	1.8 lbs.
CF4PB	11.13 x 3.81 x 3.89 (283 x 97 x 99)	10.51 x 3.19 x 3.63 (267 x 81 x 92)	9.81 (249)	2.5 (64)	9.37 (238)	2.94 (75)	8.63 (219)	2.19 (56)	2.19 (56)	2.0 lbs.
CF5PB	13.78 x 3.63 x 3.14 (350 x 92 x 80)	13.19 x 3.03 x 2.87 (335 x 77 x 73)	12.53 (318)	2.38 (60)	12.37 (314)	2.75 (70)	11.66 (296)	2.03 (52)	2.39 (61)	2.1 lbs.
CF6PB	17.35 x 3.63 x 3.14 (441 x 92 x 80)	16.75 x 3.03 x 2.87 (426 x 77 x 73)	16.1 (409)	2.38 (60)	15.94 (405)	2.75 (70)	15.22 (387)	2.03 (52)	3.05 (77)	3.0 lbs.

All measures are in inches, items in parentheses are in millimeters.
Note: CF3PB shown for reference.



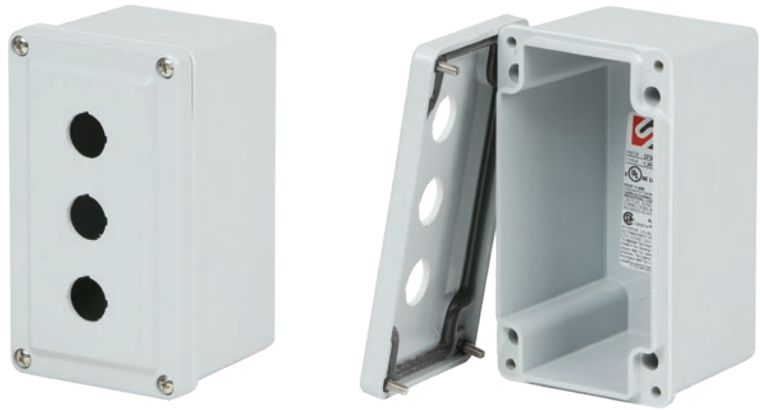
CF

22mm In-line

CF

CONFIGURATION

4 cover screws, lift off cover



CF Construction

Material	SolarGuard® – Hot compression molded fiberglass reinforced polyester (thermoset)
Gasket	Poured polyurethane seamless gasket provides watertight, dust-tight environmental seal
Cover Screws	Recessed captive stainless steel screws
Stainless Steel Hardware	300 Series stainless used on all external hardware
Enclosure Mounting	Mounting wells located under the cover, outside gasket area
Soft Edge Design	Rounded edges, minimal protrusions or exposed pocket areas for assembly of dust and debris
Color	Available standard glacier grey (PMS 428C)

CF Modifications

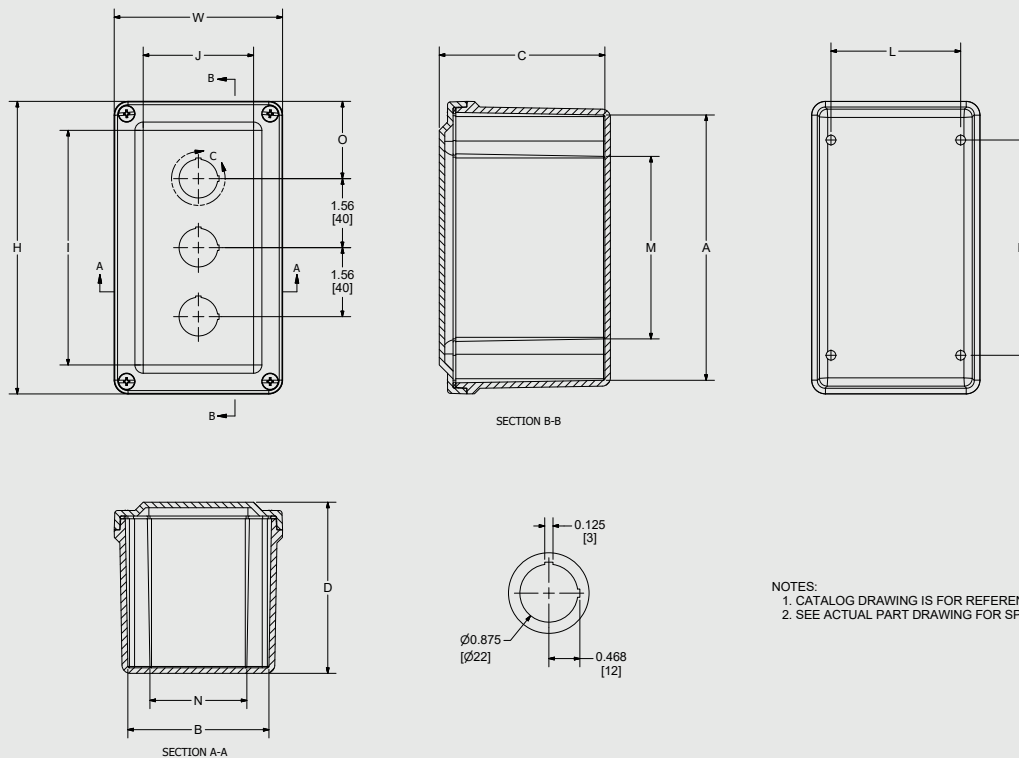
Custom Colors	pg. 21-22
Custom Painting	pg. 21-22
Silk Screening	pg. 21-22
Custom Cutouts/Holes	pg. 21-22

CF Industry Standards

NEMA 250, UL Listed UL50, UL50e, UL508A	File E64358 Type 1, 3R, 4X, 6P, 12
CSA Std C22.2	File LR069014 Type 1, 3R, 4X, 6P, 12
IEC 60529	UL File E362920 IP 66, IP67, IP68
Plenum Space (UL2043) Compliant	Yes
Temperature Range	(-76°F to +274°F) (-60°C to +134°C)
Flammability Rating	UL94-5V
Impact Rating	IK10
Self Extinguishing	Non-flame propagating
Chemical Resistance	Full chemical resistance charts listed in appendix
NFPA No. 101 Flame Spread	Class A (1)
Outdoor Exposure UL746C	(f1) Rated

CF Accessories

Mounting Feet	pg. 192
----------------------	---------



NOTES:
1. CATALOG DRAWING IS FOR REFERENCE ONLY
2. SEE ACTUAL PART DRAWING FOR SPECIFIC DESIGN

SCREW SIZES & TORQUE VALUES

PRODUCT SIZES	BACK PANEL SCREW SIZE	BACK PANEL RECOMMENDED TORQUE	COVER SCREW SIZE	COVER SCREW RECOMMENDED TORQUE	RECOMMENDED MOUNTING FLANGE TORQUE
All Sizes	N/A	N/A	#10-24 x 3/4	20 - 24 in-lbs	45 in-lbs max

PushButton Series – 22mm In-line

CATALOG NUMBER	OVERALL H X W X D	INSIDE A X B X C	I	J	K	L	M	N	O	SHIP WEIGHT
CF1PB22	6.63 x 3.81 x 3.89 (168 x 97 x 99)	6.00 x 3.19 x 3.63 (153 x 81 x 92)	5.31 (135)	2.5 (64)	4.88 (124)	2.94 (75)	4.13 (105)	2.19 (56)	3.31 (84)	1.6 lbs.
CF2PB22	6.63 x 3.81 x 3.89 (168 x 97 x 99)	6.00 x 3.19 x 3.63 (153 x 81 x 92)	5.31 (135)	2.5 (64)	4.88 (124)	2.94 (75)	4.13 (105)	2.19 (56)	2.53 (64)	1.6 lbs.
CF3PB22	6.63 x 3.81 x 3.89 (168 x 97 x 99)	6.00 x 3.19 x 3.63 (153 x 81 x 92)	5.31 (135)	2.5 (64)	4.88 (124)	2.94 (75)	4.13 (105)	2.19 (56)	1.75 (44)	1.6 lbs.
CF4PB22	8.88 x 3.81 x 3.89 (225 x 97 x 99)	8.26 x 3.19 x 3.63 (210 x 81 x 92)	7.56 (192)	2.5 (64)	7.13 (181)	2.94 (75)	6.38 (162)	2.19 (56)	2.09 (53)	1.8 lbs.
CF5PB22	11.13 x 3.81 x 3.89 (283 x 97 x 99)	10.51 x 3.19 x 3.63 (267 x 81 x 92)	9.81 (249)	2.5 (64)	9.37 (238)	2.94 (75)	8.63 (219)	2.19 (56)	2.44 (62)	2.1 lbs.
CF6PB22	11.13 x 3.81 x 3.89 (283 x 97 x 99)	10.51 x 3.19 x 3.63 (267 x 81 x 92)	9.81 (249)	2.5 (64)	9.37 (238)	2.94 (75)	8.63 (219)	2.19 (56)	1.66 (42)	2.1 lbs.

All measures are in inches, items in parenthesis are in millimeters.
Note: CF3PB22 shown for reference.



F

30mm Multi-hole

F

CONFIGURATION

4 cover screws, lift off cover



F Construction

Material	SolarGuard® – Hot compression molded fiberglass reinforced polyester (thermoset)
Gasket	Poured polyurethane seamless gasket provides watertight, dust-tight environmental seal
Cover screws	Recessed captive stainless steel screws
Stainless Steel Hardware	300 Series stainless used on all external hardware
Enclosure Mounting	Integral mounting flange for ease of mounting
Cover Retention Chain	Stainless steel beaded chain for securing cover after lift off
Panel Mounting	Back panel utilizes threaded brass inserts accepting 10-32 screws. Cover accepting 10-24 screws.
Soft Edge Design	Rounded edges, minimal protrusions or exposed pocket areas for assembly of dust and debris
Color	Available standard glacier grey (PMS 428C)

F Modifications

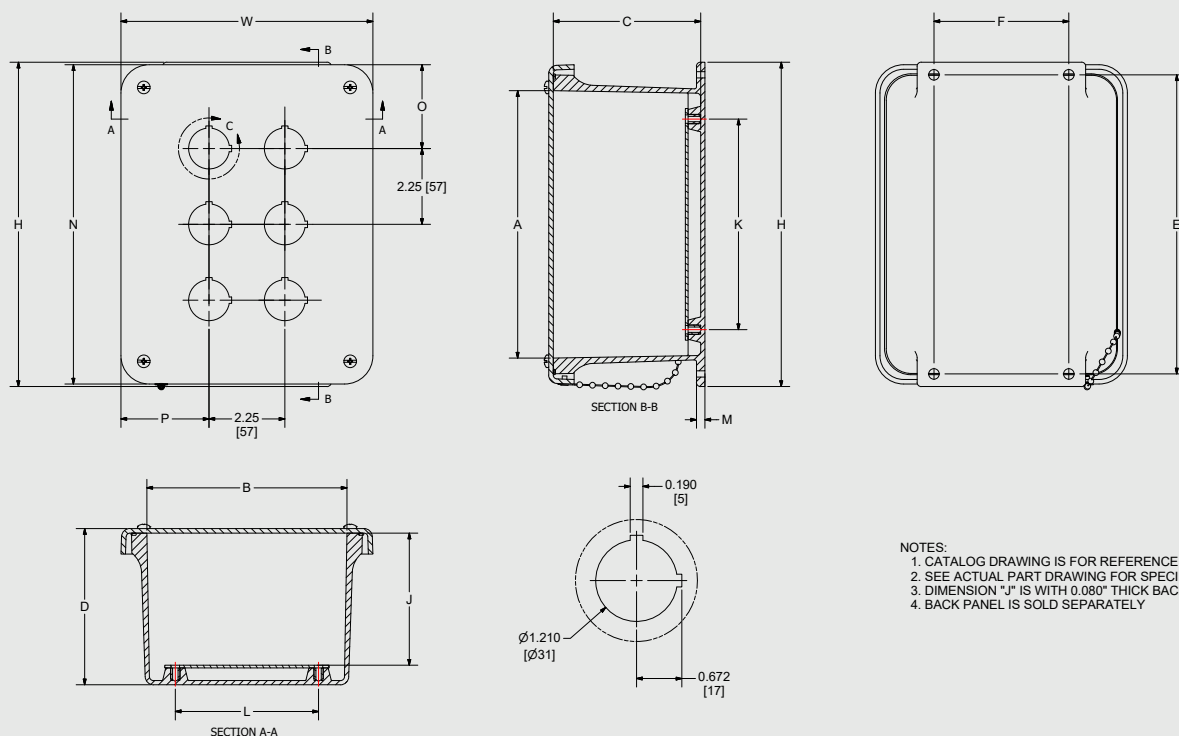
Custom Colors	pg. 21-22
Custom Painting	pg. 21-22
Silk Screening	pg. 21-22
Custom Cutouts/Holes	pg. 21-22

F Industry Standards

NEMA 250, UL Listed UL50, UL50e, UL508A	File E64358 Type 1, 3R, 4X, 6P, 12
CSA Std C22.2	File LR069014 Type 1, 3R, 4X, 6P, 12
IEC 60529	UL File E362920 IP 66, IP67, IP68
Plenum Space (UL2043) Compliant	Yes
Temperature Range	(-76°F to +274°F) (-60°C to +134°C)
Flammability Rating	UL94-5V
Impact Rating	IK10
Self Extinguishing	Non-flame propagating
Chemical Resistance	Full chemical resistance charts listed in appendix
NFPA No. 101 Flame Spread	Class A (1)
Outdoor Exposure UL746C	(f1) Rated

F Accessories

Mounting Feet	pg. 192
----------------------	---------



- NOTES:
1. CATALOG DRAWING IS FOR REFERENCE ONLY
 2. SEE ACTUAL PART DRAWING FOR SPECIFIC DESIGN
 3. DIMENSION "J" IS WITH 0.080" THICK BACK PANEL INSTALLED
 4. BACK PANEL IS SOLD SEPARATELY

SCREW SIZES & TORQUE VALUES

PRODUCT SIZES	BACK PANEL SCREW SIZE	BACK PANEL RECOMMENDED TORQUE	COVER SCREW SIZE	COVER SCREW RECOMMENDED TORQUE	RECOMMENDED MOUNTING FLANGE TORQUE
All Sizes	#10-32 x 3/8	16 - 20 in-lbs	#10-24 x 3/4	20 - 24 in-lbs	45 in-lbs max

PushButton Series – 30mm Multi-hole

CATALOG NUMBER	HOLE CONFIG.	OVERALL H X W X D	INSIDE A X B X C	MOUNTING E X F	J	K	L	M	N	O	P	HOLE DIA.	SHIP WEIGHT	PANEL NUMBER
F4PBW	2 x 2	7.50 x 7.50 x 4.75 (191 x 191 x 121)	5.72 x 5.72 x 4.45 (145 x 145 x 113)	6.75 x 4.00 (171 x 101)	4.00 (101)	4.25 (108)	4.25 (108)	0.25 (6)	7.52 (191)	2.64 (67)	2.64 (67)	0.31 (8)	2.7 lbs.	BP66*
F6PBW	3 x 2	9.62 x 7.50 x 4.74 (244 x 191 x 121)	7.73 x 5.74 x 4.45 (196 x 146 x 113)	8.88 x 4.00 (225 x 101)	4.00 (101)	6.25 (159)	4.25 (108)	0.25 (6)	9.5 (242)	2.64 (67)	2.51 (64)	0.31 (8)	3.5 lbs.	BP86*
F9PBW	3 x 3	11.62 x 9.41 x 4.25 (295 x 239 x 108)	9.73 x 7.73 x 3.98 (247 x 196 x 101)	10.75 x 6.00 (273 x 152)	3.50 (89)	8.25 (209)	6.25 (159)	0.25 (6)	11.35 (288)	3.43 (87)	2.45 (62)	0.31 (8)	5.0 lbs.	BP108*

All measures are in inches, items in parentheses are in millimeters.
Note: F6PBW shown for reference



*Panel sold separately

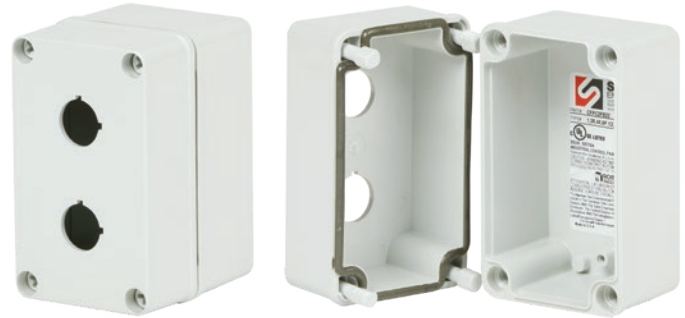


CFPC

Product Specifications

PushButton Series

Polycarbonate 30mm; 22mm



CFPC

CONFIGURATION

4 cover screws, lift off cover

CFPC Construction

Material (Box & Cover)	Polycarbonate with UV inhibitors
Gasket Material	Poured polyurethane seamless gasket
Cover Screw Material	Custom polycarbonate screw
Cover Screw Size	Custom screw size
Cover Screw Torque	16 in.-lbs
Enclosure Mounting	Mounting wells located under the cover/ outside the gasket area
Soft Edge Design	Rounded edges, minimal protrusions or exposed pocket areas for assembly of dust and debris
Color	Available standard in RAL 7541C

CFPC Modifications

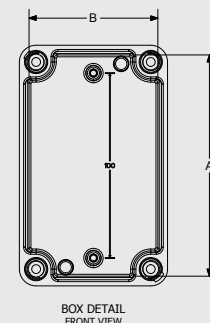
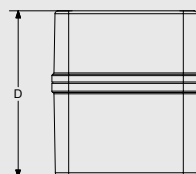
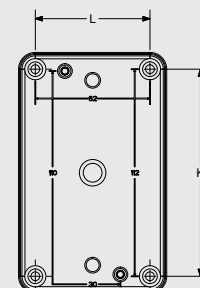
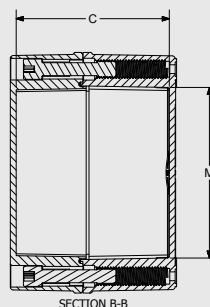
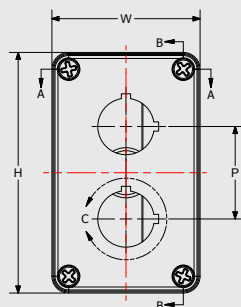
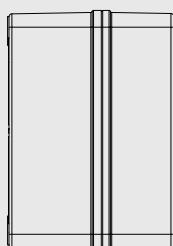
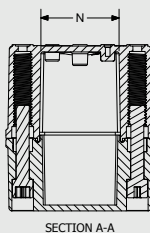
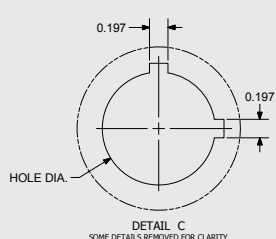
Custom Colors	pg. 21-22
Custom Painting	pg. 21-22
Silk Screening	pg. 21-22
Custom Cutouts/Holes	pg. 21-22

CFPC Industry Standards

NEMA 250, cULus Listed UL50, UL50e, UL508A	E319779 Type 1, 3R, 4X, 6P, 12
IEC 60529	UL File E362920 IP66, IP67, IP68
Temperature Range	(-40°F to +248°) (-40°C to +120°)
Flammability Rating	UL94-5VA
Chemical Resistance	Full chemical resistance charts listed in appendix
Outdoor Exposure UL 746C	(f1) Rated

CFPC Accessories

Accessory Kit (Screws)	pg. 191
All Other Accessories	pg. 184-194



- NOTES:
1. CATALOG DRAWING IS FOR REFERENCE ONLY
2. SEE ACTUAL PART DRAWING FOR SPECIFIC DESIGN
3. COVER OPTIONS:
-1PB - (1) 30 mm DIA. HOLE
-2PB - (2) 30 mm DIA. HOLES
-1PB22 - (1) 22 mm DIA. HOLE
-2PB22 - (2) 22 mm DIA. HOLES

SCREW SIZES & TORQUE VALUES

PRODUCT SIZES	BACK PANEL SCREW SIZE	BACK PANEL RECOMMENDED TORQUE	COVER SCREW SIZE	COVER SCREW RECOMMENDED TORQUE	RECOMMENDED MOUNTING FLANGE TORQUE
All Sizes - CFPC Series	N/A	N/A	Custom Screw	16-20 in-lbs	25 - 30 in-lbs

Pushbutton Series – Polycarbonate 30mm; 22mm

CATALOG NUMBER	HOLE CONFIG.	OVERALL H X W X D	INSIDE A X B X C	K	L	M	N	P	HOLE DIA.	SHIP WEIGHT
CFPC1PB	1	4.34 x 3.16 x 2.79 (110 x 80 x 71)	3.92 x 2.74 x 2.51 (100 x 70 x 64)	3.62 (92)	2.44 (62)	2.85 (72)	1.66 (42)	N/A	1.20 (31)	2 lbs.
CFPC2PB	2	5.12 x 3.16 x 3.54 (130 x 80 x 90)	4.71 x 2.74 x 3.26 (120 x 70 x 83)	4.41 (112)	2.44 (62)	3.63 (92)	1.66 (42)	1.97 (50)	1.20 (31)	2 lbs.
CFPC1PB22	1	4.34 x 3.16 x 2.79 (110 x 80 x 71)	3.92 x 2.74 x 2.51 (100 x 70 x 64)	3.62 (92)	2.44 (62)	2.85 (72)	1.66 (42)	N/A	0.89 (23)	2 lbs.
CFPC2PB22	2	5.12 x 3.16 x 3.54 (130 x 80 x 90)	4.71 x 2.74 x 3.26 (120 x 70 x 83)	4.41 (112)	2.44 (62)	3.63 (92)	1.66 (42)	1.97 (50)	0.89 (23)	2 lbs.

All measures are in inches, items in parentheses are in millimeters.



Disconnect Series



Disconnect Series



Disconnect Series

Stahlin's **Disconnect Series** offers a unique range of product designed around a Type 4X watertight, corrosion resistant vertical disconnect handle. The versatile mechanism functions as a universal linkage compatible with name brand disconnects, circuit breakers and combination starters.

An environmentally sealed vertical disconnect mechanism differs significantly from a rotary through-the-door mechanism. The assembly maintains the complete environmental integrity of the enclosure while it minimizes panel obstruction. The mechanism mounts to the far right side of the enclosure and minimizes the linkage interference with panel mounted components. As a result, competitively priced, commercially available control can be used. Stahlin's unique handle mechanism uses internal cabinet space in the most efficient way possible. The handle mechanism is unchanged, regardless of the capacity of the control. However, five different enclosure sizes are offered to accommodate both small and large control assemblies.

Product Configurations

DISCONNECT SERIES



VERTICAL
DISCONNECT
HANDLE,
WITHOUT
PRE-MOUNTED
CONTROL

Attributes

- Environmentally sealed Type 4X disconnect handle
- Safety lock in off position
- Memory retaining polyurethane gasket
- High impact resistance
- 300 series stainless steel
- Stands up to an exceptionally broad range of chemical exposures
- Integral mounting feet
- Molded in panel mounting inserts
- Compatible with rod driven mechanisms only

Industry Standards

NEMA 250, UL Listed UL50, UL50e, UL508A	File E64358SP Type 1, 3, 3R, 4X, 12 as designated
CSA Std C22.2	File LR069014 Type 1, 3, 3R, 4X, 12 as designated
Temperature Range	(-76°F to +274°F) (-60°C to +134°C)
Flammability Rating	UL94-5V
Self Extinguishing	Non-halogenated, non-flame propagating
Chemical Resistance	Full chemical resistance charts listed in appendix
NFPA No. 101 Flame Spread	Class A (1)
Outdoor UV Exposure	(f1) Rated



Control Disconnect

**CONFIGURATION**

Vertical disconnect handle,
without pre-mounted control



C Construction

Material	SolarGuard® – Hot compression molded fiberglass reinforced polyester
Gasket	Poured polyurethane seamless gasket provides watertight, dust-tight environmental seal
Stainless Steel Hardware	300 Series stainless used on all hardware
Molded in Mounting Bosses	Panel mounting capability for fixed rear panel
Metal inserts	All bosses utilize threaded brass inserts accepting 3/8"-16 screws
Soft Edge Design	Rounded edges, minimal protrusions or exposed pocket areas for assembly of dust and debris
Latch Material	Glass Filled Polyamide with foam in place gasket
Color	Available in standard glacier gray (Pantone 428C)

C Modifications

Custom Colors	pg. 21-22
Silk Screening	pg. 21-22
EMI/RFI Shielding	pg. 21-22
Custom Window	pg. 21-22
Custom Cutouts/Holes	pg. 21-22

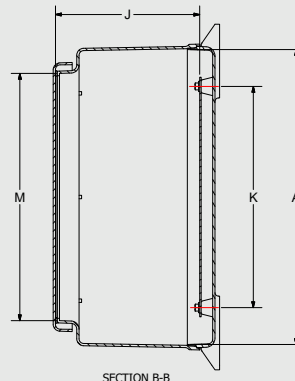
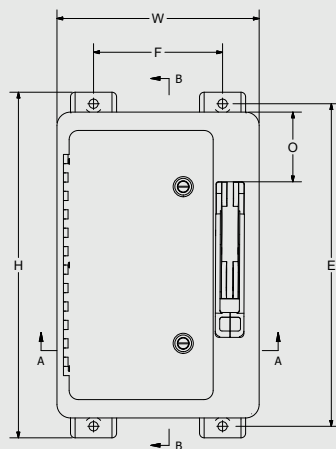
C Industry Standards

NEMA 250, UL Listed UL50, UL50e, UL508A	File E64358SP Type 1, 3, 3R, 4X, 12 as designated
CSA Std C22.2	File LR069014 Type 1, 3, 3R, 4X, 12
Temperature Range	(-76°F to +274°F) (-60°C to +134°C)
Flammability Rating	UL94-5V
Self Extinguishing	Non-halogenated, non-flame propagating
Chemical Resistance	Full chemical resistance charts listed in appendix
NFPA No. 101 Flame Spread	Class A (1)
Outdoor Exposure UL746C	(f1) Rated

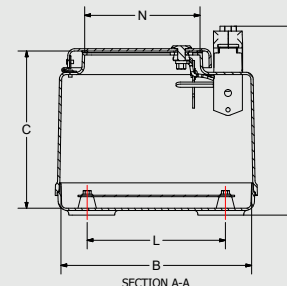
C Accessories

Carbon Steel Back Panels	BP_CS	pg. 176
Drain & Breather Vents		pg. 185
Hole Plugs		pg. 187
Assorted Hubs and Cord Grips		pg. 188-189
All Other Accessories		pg. 184-194

ACCESSORIES



SECTION B-B



SECTION A-A

NOTES:

1. CATALOG DRAWING IS FOR REFERENCE ONLY
2. SEE ACTUAL PART DRAWING FOR SPECIFIC DESIGN
3. "J" DIMENSION IS WITH 0.080" THICK BACK PANEL INSTALLED
4. BACK PANEL IS SOLD SEPARATELY

SCREW SIZES & TORQUE VALUES

PRODUCT SIZES	BACK PANEL SCREW SIZE	BACK PANEL RECOMMENDED TORQUE	COVER SCREW SIZE	RECOMMENDED MOUNTING FLANGE TORQUE
N1610 up to N4836	#3/8-16 x 1/2 Hex Bolt	28 - 32 in-lbs	N/A	80 in-lbs max
All made to order	#3/8-16 Stud	28 - 32 in-lbs	N/A	80 in-lbs max

Disconnect Series

CATALOG NUMBER	OVERALL H X W X D	INSIDE A X B X C	MOUNTING E X F	J	K	L	OPENING ENCLOSURE M X N	O	SHIP WEIGHT	PANEL NUMBER
C2016*	22.75 x 16.87 x 11.00 (578 x 429 x 279)	19.70 x 16.04 x 9.24 (500 x 407 x 235)	21.50 x 10.12 (546 x 257)	8.26 (210)	15.25 (387)	11.25 (286)	16.75 x 12.19 (425 x 310)	3.50 (89)	23.5	BP2016CD**
C2412*	26.95 x 13.72 x 13.25 (685 x 348 x 337)	24.00 x 12.87 x 11.33 (610 x 327 x 288)	25.75 x 6.25 (654 x 159)	10.33 (262)	19.25 (489)	7.25 (184)	21.00 x 8.37 (533 x 213)	5.75 (146)	28.6	BP2412CD**
C2424*	27.00 x 25.24 x 13.19 (686 x 641 x 335)	24.05 x 24.39 x 11.25 (611 x 619 x 286)	25.75 x 17.87 (654 x 454)	10.25 (260)	19.25 (489)	19.25 (489)	21.25 x 20.00 (540 x 508)	5.75 (146)	42.7	BP2424CD**
C3024*	33.41 x 26.32 x 13.19 (849 x 668 x 335)	30.46 x 25.47 x 11.27 (774 x 647 x 286)	32.25 x 18.50 (819 x 470)	10.27 (261)	25.25 (641)	19.25 (489)	27.38 x 21.25 (695 x 540)	12.25 (311)	53.6	BP3024CD**
C3630*	39.31 x 32.50 x 13.31 (999 x 826 x 338)	36.31 x 31.69 x 11.36 (922 x 805 x 289)	38.13 x 23.88 (968 x 606)	10.36 (263)	31.25 (794)	25.25 (641)	33.25 x 27.5 (845 x 692)	12.25 (311)	71.5	BP3630CD**

All measures are in inches, items in parentheses are in millimeters.

*Compatible with rod driven mechanisms – Disconnect, fuse block, breaker, yoke, switches, or other internal components are not furnished with enclosure.



**Panel sold separately