

Renu®	Q-2
Switches	Q-4
Receptacles	Q-4
USB Charger Receptacles	Q-5
GFCI Devices	Q-6
Dimmers	Q-7
Wallplates	Q-8
Color Change Kits	Q-10
Datacom	Q-12



Renu® in a Snap

The Smart Way to Update the Look of a Room in Just a Few Easy Steps.

Renu® is a new collection of electrical wiring devices, including switches, receptacles, dimmers and wallplates, that features easily changeable faceplates in 20 popular colors. Refresh the color of any Renu® device without any rewiring by snapping off the faceplate on the device and snapping on the new color face. Coordinating screwless wallplates snap on to finish the look. Renu® fits any lifestyle and adapts to changing décor.

RE153



Remove existing switch. Replace with Renu®.



Now you've got a great look you can change any time.

Face snaps off/on to change color



Remove Renu® wallplate and face.



Choose a fresh color to match or contrast with décor.



Snap on a Renu® coordinating wallplate. Now you're done and can enjoy your smart new look.



Not for use with Decora® Wallplates

The Renu® Palette

Renu® complements any décor, whether you want it to blend in with the walls or contrast with the trim. The collection is available in many popular shades.



White on White
(-WW)



Fresh Pink
Lemonade
(-FP)



Sea Spray
(-SE)



Onyx Black
(-OB)



Gold Coast
White (-GC)



Toasted
Coconut
(-TC)



Navajo Sand
(-NS)



Granny Smith
Apple
(-GS)



Walnut
Bark (-WB)



Café Latte
(-CA)



Pebble Gray
(-PG)



Warm
Caramel (-WC)



Corn Silk
(-CS)



Prairie Sage
(-PS)



Whispering
Wheat (-WG)



Dapper Tan
(-DT)



Red
Delicious (-RE)



Wood Smoke
(-WS)



Deep
Garnet (-DG)



Rich Navy
(-RN)



Stainless Steel
Appearance
(-STS)
(Wallplate Only)

Not for use with Decora® Wallplates

Renu® Switches

Leviton Renu® switches feature a shallow design that easily installs in any wallbox and is self grounded when installed in a properly grounded metal wallbox. The wiring options include Quickwire, back, or side wiring for quick installation. Switches for every need include single pole, 3-way, 4-way and combination devices, all with gently curved edges and sculpted lines.

Renu® Receptacles

Leviton Renu® receptacles feature a shallow design that easily installs in any wallbox and is self grounded when installed in a properly grounded metal wallbox. Back and side wiring options allow for quick and convenient installation. Renu® receptacles are tamper-resistant with a built-in shutter mechanism that blocks access to the contacts unless a two-prong plug is inserted.

Features and Benefits

- Shallow depth for easier installation
- Self-grounded when installed in a properly grounded metal wallbox
- Terminals designed to withstand high torque and resist wire pullout
- Innovative tongue and groove design for effortless alignment in multi-gang installations
- No subplate behind the wallplate or visible mounting screws
- To complete the look, snap on a matching or contrasting Renu® screwless wallplate (sold separately)
- Use only with Renu® wallplates
- Backed by a limited 5-year warranty

Switches

- Back and side wired for fast, easy installation
- 3-way and 4-way switches are available for controlling lights from multiple locations
- Switch face easily snaps OFF and ON to change color
- Once installed, Renu® switches can be updated to a new color by ordering a color change kit

Receptacles

- Back, side and quick wired for fast, easy installation
- Tamper-resistant to meet the child safety requirements of the National Electrical Code®
- Receptacle face easily snaps OFF and ON to change color
- Once installed, Renu® receptacles can be updated to a new color by ordering a color change kit

Renu® Switches

Description	Rating	Cat. No.	Color
Switch for Single Pole Applications	15A 120/277VAC	RE151	WW, OB, NS, CA, CS, DT, DG, FP, GC, GS, PG, PS, RE, RN, SE, TC, WB, WC, WG, WS
Switch for 3-Way Applications		RE153	
Switch for 4-Way Applications		RE154	
Color Change Kit for Single Pole, 3-Way and 4-Way Switches	—	RKDMD	
Single Pole Combination Switch	15A 120/277VAC	RE634	
Color Change Kit for Combination Switch	—	RK634	



RE153

Renu® Receptacles

Description	Rating	Cat. No.	Color
Tamper-Resistant Receptacle	15A 125V	RER15	WW, OB, NS, CA, CS, DT, DG, FP, GC, GS, PG, PS, RE, RN, SE, TC, WB, WC, WG, WS
Color Change Kit for 15A		RKR15	
Tamper-Resistant Receptacle	20A 125V	RER20	
Color Change Kit for Tamper-Resistant Receptacle		RKR20	



RER15

Not for use with Decora® Wallplates

Renu® USB Charger/Tamper-Resistant Receptacles

Leviton Renu® USB Charger/Tamper-Resistant Duplex Receptacles are the smart way to update the look of any room while enjoying the latest charging technology. They have the capability to charge electronic devices utilizing the two USB Ports, leaving the two Tamper-Resistant Receptacles free for other uses. The Renu® USB Charger/Tamper-Resistant Receptacles use smart chip technology to recognize and optimize the charging requirements of individual smart phones, tablets and more for faster, more efficient charging every time.

Features and Benefits

- Smart chip recognizes and optimizes the charging requirements of individual devices
- Two high-powered charging ports, 3.6A charging capacity
- Tamper-Resistant to meet the child safety requirements of the National Electrical Code®
- USB ports are positioned vertically providing more space for maneuvering and reducing stress on USB cables
- Compatible with USB 2.0 devices
- Fits in a standard wallbox
- Back and side wired for easy installation
- Receptacle face easily snaps OFF and ON to change color
- Innovative tongue and groove design for effortless alignment in multi-gang installations with other Renu devices
- No subplate behind the wallplate or visible mounting screws
- Uses only Renu wallplates (sold separately)
- Spec Grade
- Backed by 5-year limited warranty

Renu® Receptacles

Description	Rating	Cat. No.	Color
USB Charger/Tamper-Resistant Receptacle, 3.6A charging	15A 125V	RUAA1	WW, OB, NS, CA, CS, DT, DG, FP, GC, GS, PG, PS, RE, RN, SE, TC, WB, WC, WG, WS
Color Change Kit for 15A USB Charger/Tamper-Resistant Receptacle	—	RKAA1	
USB Charger/Tamper-Resistant Receptacle, 3.6A charging	20A 125V	RUAA2	
Color Change Kit for 20A USB Charger/Tamper-Resistant Receptacle	—	RKAA2	



RUAA1



RUAA2

Not for use with Decora® Wallplates

Renu® GFCI Devices

Leviton Renu® GFCI receptacles feature our new shallow design that takes up to 25% less space in the wallbox than other GFCIs so it easily installs in most wallboxes, even shallow ones. It also contains Leviton's patented RESET lockout feature which automatically tests the GFCI every time the RESET button is pushed in. Renu® GFCI receptacles are self grounded when installed in a properly grounded metal wallbox. Back and side wiring options allow for quick and convenient installation. They are tamper-resistant with a built-in shutter mechanism that blocks access to the contacts unless a two-prong plug is inserted. GFCIs are required by the National Electrical Code® (NEC®) in all new and renovated residential construction in areas in the vicinity of water or which are prone to dampness.

Features and Benefits

- Shallow depth for easier installation
- Tamper-resistant to meet NEC child safety requirements for new and renovated residential construction
- Patented lockout feature for added safety prevents RESET if GFCI is not operating properly
- Self grounded when installed in a properly grounded metal wallbox
- Back and side wired for fast, easy installation
- Terminals designed to withstand high torque and resist wire pullout
- Innovative tongue and groove design for effortless alignment in multi-gang installations
- No subplate behind the wallplate or visible mounting screws
- GFCI face easily snaps OFF and ON to change color
- Once installed, Renu® GFCI outlets can be updated to a new color by ordering a color change kit
- To complete the look, snap on a matching or contrasting Renu® screwless wallplate (sold separately)
- Use only with Renu® wallplates
- Backed by a limited 5-year warranty

Renu® GFCIs

Description	Rating	Cat. No.	Color
Tamper-Resistant Self-Test GFCI Receptacle	15A 125V @ Receptacle. 20A 125V Feed-Through	RGF15	WW, OB, NS, CA, CS, DT, DG, FP, GC, GS, PG, PS, RE, RN, SE, TC, WB, WC, WG, WS
Color Change Kit for 15A Tamper-Resistant GFCI Receptacle	—	RKG15	WW, OB, NS, CA, CS, DT, DG, FP, GC, GS, PG, PS, RE, RN, SE, TC, WB, WC, WG, WS
Tamper-Resistant Self-Test GFCI Receptacle	20A 125V @ Receptacle. 20A 125V Feed-Through	RGF20	WW, OB, NS, CA, CS, DT, DG, FP, GC, GS, PG, PS, RE, RN, SE, TC, WB, WC, WG, WS
Color Change Kit for 20A Tamper-Resistant GFCI Receptacle	—	RKG20	WW, OB, NS, CA, CS, DT, DG, FP, GC, GS, PG, PS, RE, RN, SE, TC, WB, WC, WG, WS



RGF15



RGF20

Not for use with Decora® Wallplates

Renu® Dimmers

Leviton Renu® Dimmers feature a shallow design that easily installs in any wallbox and is self grounded when installed in a properly grounded metal wallbox. The terminals are designed to withstand high torque and resist wire pullout. The Renu® dimmer can be used for single-pole, 3-way and other applications when used with the coordinating remote dimmer. Along with providing convenient control, dimmers can help lower your electric bills and extend the life of your light bulbs.

Features and Benefits

- Shallow depth for easier installation
- Digital circuitry provides single pole, 3-way or more applications when used with the RE00R remote dimmer
- Soothing white LED and brightness display
- Advanced programming is available for energy save mode, minimum brightness level, preset ON, fade rates, almost OFF and LED options
- Back and side wired for fast, easy installation
- Innovative tongue and groove design for effortless alignment in multi-gang installations
- No subplate behind the wallplate or visible mounting screws
- Dimmer face easily snaps OFF and ON to change color
- Once installed, Renu® dimmers can be updated to a new color by ordering a color change kit
- REL06 is designed specifically for use with dimmable LED and CFL lamps as well as incandescent and magnetic low voltage loads
- To complete the look, snap on a matching or contrasting Renu® screwless wallplate (sold separately)
- Use only with Renu® wallplates
- Backed by a limited 5-year warranty

Renu® Digital Controls for Single Pole, 3-Way or More Applications

Renu® Dimmers			
Description	Rating	Cat. No.	Color
LED/CFL/MLV/Incandescent Dimmer with LED locator and brightness display	300W LED/CFL. 600VA Magnetic Low Voltage. 600W 120VAC Incandescent	REL06	WW, OB, NS, CA, CS, DT, DG, FP, GC, GS, PG, PS, RE, RN, SE, TC, WB, WC, WG, WS
Dimmer Color Change Kit	—	RKDMD	WW, OB, NS, CA, CS, DT, DG, FP, GC, GS, PG, PS, RE, RN, SE, TC, WB, WC, WG, WS
Coordinating Remote Dimmer for 3-Way or Multi-Location Control, for use with REL06	No Load Rating. 120VAC	RE00R	WW, OB, NS, CA, CS, DT, DG, FP, GC, GS, PG, PS, RE, RN, SE, TC, WB, WC, WG, WS
Coordinating Remote Dimmer Color Change Kit	—	RKDCC	WW, OB, NS, CA, CS, DT, DG, FP, GC, GS, PG, PS, RE, RN, SE, TC, WB, WC, WG, WS



REL06



RE00R

Not for use with Decora® Wallplates

Renu® Wallplates

Renu® Wallplates snap directly onto the Renu® devices for seamless style. If you decide to change color schemes, you can easily snap off the wallplate and snap on a new one. Choose from 20 designer color wallplates, and stainless steel appearance, to find the perfect combination. The large selection makes it easy to find the right color so the device can blend in or contrast against the existing décor. These wallplates are slightly larger than standard sized ones to help cover wall imperfections and are available in one-, two-, three, and four-gang models.

Features and Benefits

- Exclusive for all Renu® devices
- Screwless, snap-on wallplate
- Does not contain a subplate, simply snap onto Renu® device
- Available in 20 popular colors and stainless steel appearance finish to match any décor
- Slightly larger than standard wallplates to help cover wall imperfections
- 1-, 2-, 3- and 4-gang wallplates available
- Renu® adapter ring REA00* (sold separately) allows any Decora® device to fit into a Renu® wallplate
- Backed by a limited 5-year warranty

Renu® Samples



Renu® Colors

Note: Only wallplates are available in the stainless steel appearance finish. To order colors, add suffix to Cat. No.



White on White (-WW)



Onyx Black (-OB)



Navajo Sand (-NS)



Café Latte (-CA)



Corn Silk (-CS)



Dapper Tan (-DT)



Deep Garnet (-DG)



Fresh Pink Lemonade (-FP)



Gold Coast White (-GC)



Granny Smith Apple (-GS)



Pebble Gray (-PG)



Prairie Sage (-PS)



Red Delicious (-RE)



Rich Navy (-RN)



Sea Spray (-SE)



Toasted Coconut (-TC)



Walnut Bark (-WB)



Warm Caramel (-WC)



Whispering Wheat (-WG)



Wood Smoke (-WS)



Stainless Steel Appearance (-STS)

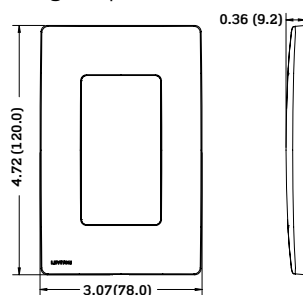
Not for use with standard Decora® devices without the "Renu®" Adapter Frame

Renu® Wallplates

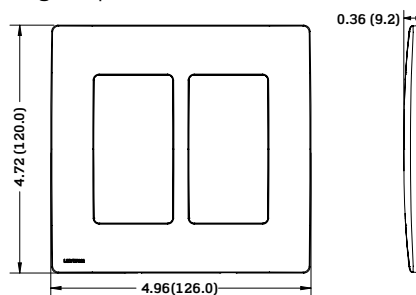
Description	Cat. No.	Color	
1-Gang Screwless Snap-On Wallplate	REWP1	WW, OB, NS, CA, CS, DT, DG, FP, GC, GS, PG, PS, RE, RN, SE, TC, WB, WC, WG, WS	
1-Gang Screwless Snap-On Wallplate, in Stainless Steel Appearance	REWM1	STS	
2-Gang Screwless Snap-On Wallplate	REWP2	WW, OB, NS, CA, CS, DT, DG, FP, GC, GS, PG, PS, RE, RN, SE, TC, WB, WC, WG, WS	
2-Gang Screwless Snap-On Wallplate, in Stainless Steel Appearance	REWM2	STS	
3-Gang Screwless Snap-On Wallplate	REWP3	WW, OB, NS, CA, CS, DT, DG, FP, GC, GS, PG, PS, RE, RN, SE, TC, WB, WC, WG, WS	
4-Gang Screwless Snap-On Wallplate	REWP4	WW, OB, NS, CA, CS, DT, DG, FP, GC, GS, PG, PS, RE, RN, SE, TC, WB, WC, WG, WS	

Wiring Diagrams for Wallplates

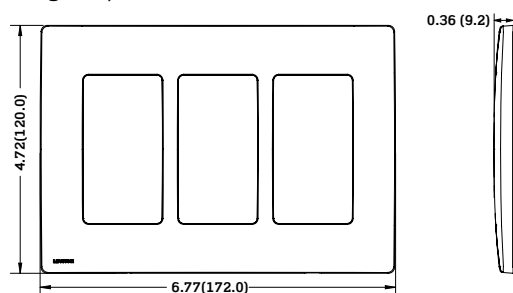
1-Gang Wallplate



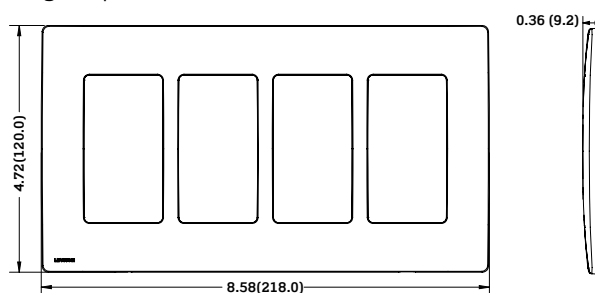
2-Gang Wallplate



3-Gang Wallplate



4-Gang Wallplate



Not for use with standard Decora® devices without the "Renu®" Adapter Frame

Renu® Color Change Kits

Leviton Renu® Color change kits are ideal for a quick and easy color change for the entire line of Renu® devices. Simply snap off the device face-and snap on a new one-no need to rewire. Interchangeable faceplates and wallplates are available in 20 popular colors to blend in or contrast with any color scheme.

Features and Benefits

- Update any Renu® switch in a snap
- Switch faces easily, snap off to change color
- Available in 20 designer colors
- Turns the electrical device into a decorative, easily updated accessory
- Backed by a limited 5-year warranty

Renu® Color Change Kits

Description	Cat. No.
Color Change Kit for Single Pole, 3-Way and 4-Way Switches	RK15X
Color Change Kit for Combination Switch	RK634
Color Change Kit for 15A Tamper-Resistant Receptacle	RKR15
Color Change Kit for 20A Tamper-Resistant Receptacle	RKR20
Color Change Kit for 15A USB Charger/Tamper-Resistant Receptacle	RKAA1
Color Change Kit for 15A Tamper-Resistant Self-Test GFCI Receptacle	RKG15
Color Change Kit for 20A Tamper-Resistant Self-Test GFCI Receptacle	RKG20
Color Change Kit for 20A USB Charger/Tamper-Resistant Receptacle	RKAA2
Dimmer Color Change Kit	RKDMD
Coordinating Remote Dimmer Color Change Kit	RKDCD



RK15X



RK634



RKR15



RKAA1



RKG15

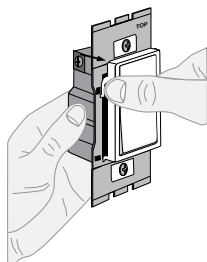
Color Choices Renu® color change kits are offered in a wide range of colors. To order colors, add suffix to Cat. No.

White
(-WW)Onyx
Black
(-OB)Navajo
Sand
(-NS)Café
Latte
(-CA)Corn
Silk
(-CS)Dapper
Tan
(-DT)Deep
Garnet
(-DG)Fresh Pink
Lemonade
(-FP)Gold Coast
White
(-GC)Granny
Smith Apple
(-GS)Pebble
Gray
(-PG)Prairie
Sage
(-PS)Red
Delicious
(-RE)Rich
Navy
(-RN)Sea
Spray
(-SE)Toasted
Coconut
(-TC)Walnut
Bark
(-WB)Warm
Caramel
(-WC)Whispering
Wheat
(-WG)Wood
Smoke
(-WS)

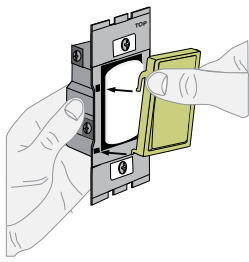
Not for use with Decora® Wallplates

How to Change Renu® Device Color Faces

How to Change a Switch Color

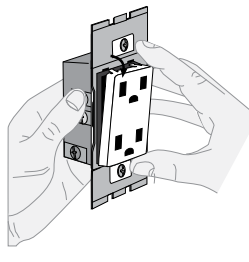


Push in sides at tabs and pull to release face

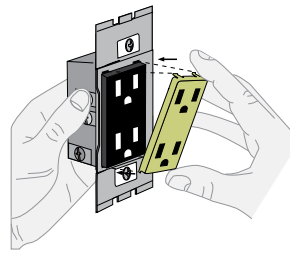


Attach new face by inserting the bottom hinge tabs, then pivot and snap on the new face

How to Change a Receptacle Color*



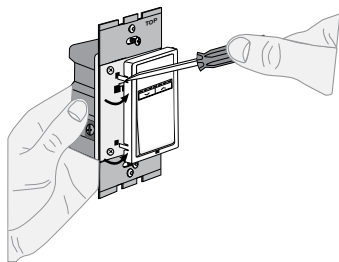
Push down tabs per diagram, one at a time and rotate forward to release face



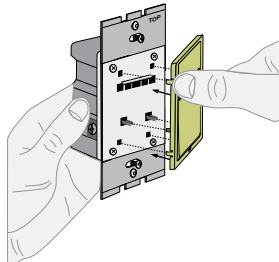
Attach new face by inserting bottom hinge tabs, then pivot and snap on the new face

* Includes the USB Charger/Tamper-Resistant Receptacle

How to Change a Dimmer Color

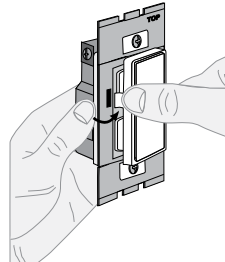


Using a flat screwdriver, push in upper and lower tabs on left side of frame, then rotate right to release face

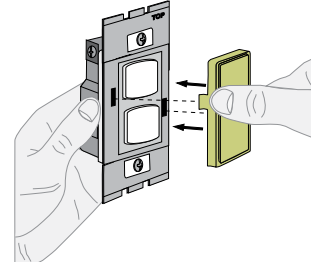


Line up and insert right side tabs, then rotate left to attach new face

How to Change a Combination Switch Color

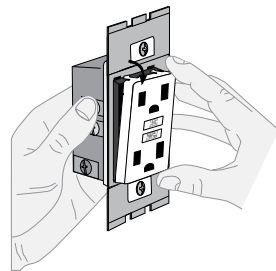


Push in left side of frame at tab and rotate right to release

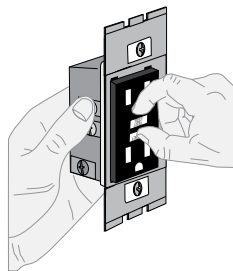


Insert right side tab and rotate left to attach

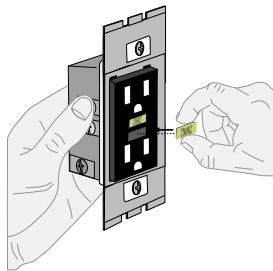
How to Change a GFCI Color



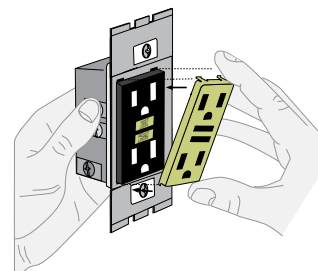
Push down tabs per diagram, one at a time and rotate forward to release face



Pull out Test and Reset buttons



Insert new Test and Reset buttons



Attach new face by inserting bottom hinge tabs, then pivot and snap on the new face

Not for use with Decora® Wallplates

Renu® Datacom Inserts and Adapter Ring

Renu® data connectivity inserts for snap-in QuickPort® modules fit Renu® wallplates and provide audio/video connections. The Renu® adapter ring makes it easy to retrofit any Decora® device to fit into a Renu® wallplate.

Features and Benefits

Datacom QuickPort® Insert

- Available in 1, 2, 3, 4 and 6 ports
- Compatible with all QuickPort® connectors and adapters (sold separately)
- Inserts can be customized in a snap with any Leviton QuickPort® audio/video, phone or data connector in standard QuickPort® colors
- Quick and easy to install
- Available in three standard colors to coordinate with QuickPort® colors: White on White (QuickPort® White), Onyx Black (QuickPort® Black) or Navajo Sand (QuickPort® Light Almond)
- Use only with Renu® wallplates
- cULus Listed

Adapter Ring

- Allows any Decora® device to fit into a Renu® wallplate
- Renu® screwless wallplates (sold separately) snap directly onto adapter ring
- Adapter ring available in White on White (Decora® White), Onyx Black (Decora® Black) and Navajo Sand (Decora® Light Almond)
- Easy to install

Renu® Datacom Inserts and Adapter Ring

Description	Cat. No.	Color
Leviton Renu® 1-port Insert	RE640- **1	WW, OB, NS
Leviton Renu® 2-port Insert	RE640- **2	WW, OB, NS
Leviton Renu® 3-port Insert	RE640- **3	WW, OB, NS
Leviton Renu® 4-port Insert	RE640- **4	WW, OB, NS
Leviton Renu® 6-port Insert	RE640- **6	WW, OB, NS
Leviton Renu® Adapter Ring	REA00- **	WW, OB, NS
Snap-In Blank Module	RE640-B **	WW, OB, NS



RE640-WW2



REA00

Color Choices

Renu® Datacom inserts are offered in three color choices.

To order colors, add suffix to Cat. No.



White on White
Quickport®
White
(-WW)



Onyx Black
Quickport®
Black
(-OB)



Navajo Sand
Quickport®
Light Almond
(-NS)



RE640-WW2
Fully Loaded