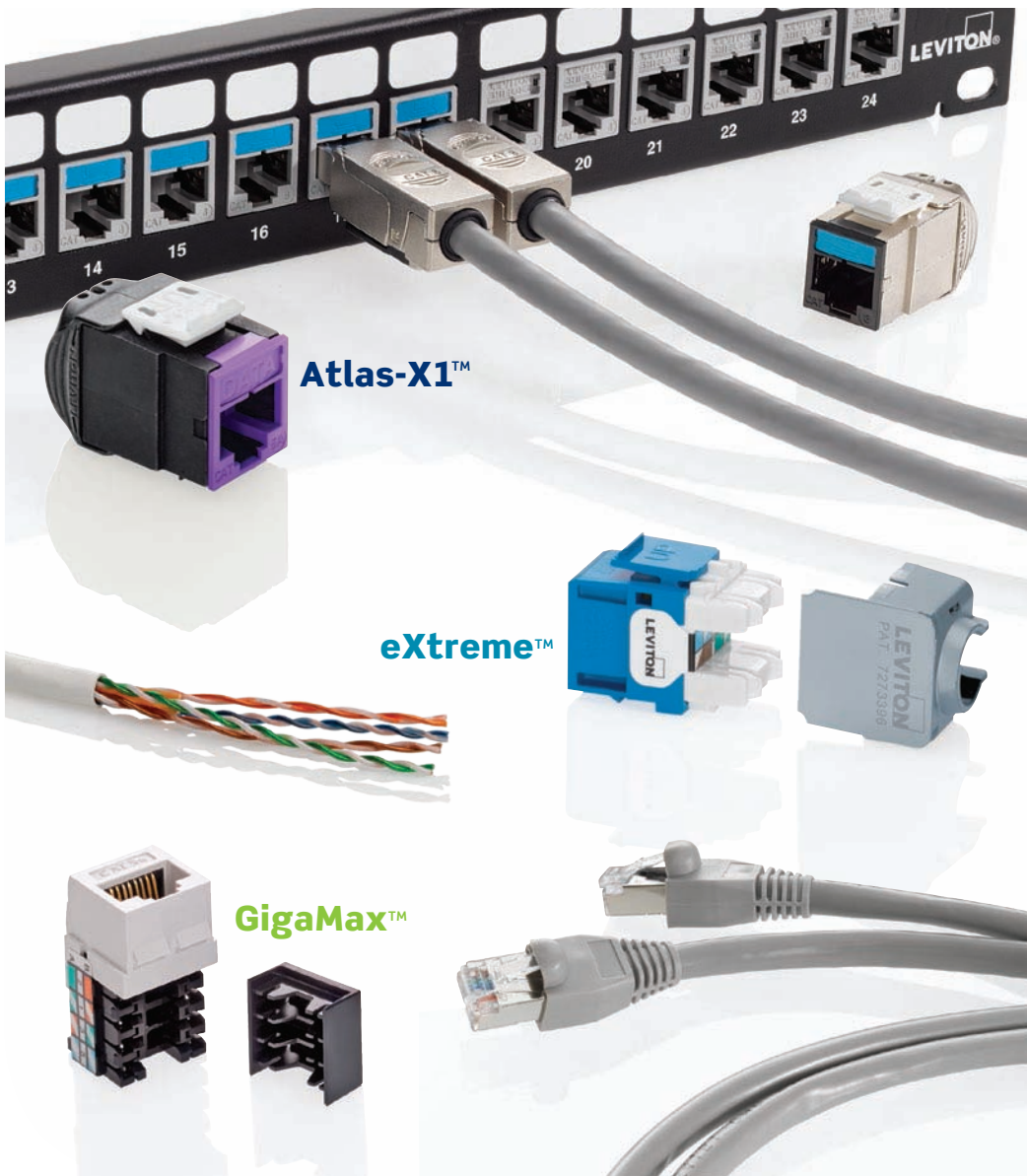


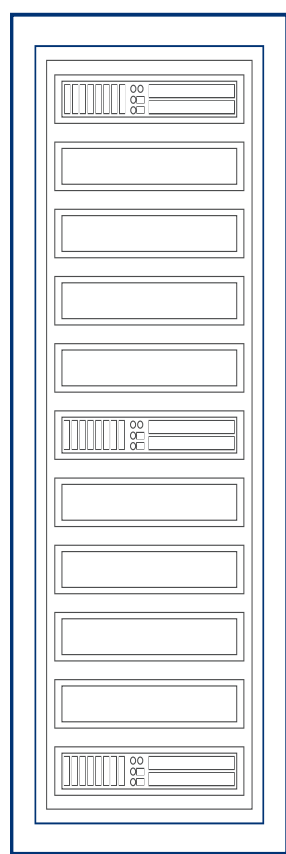
COPPER SYSTEMS

The smart choice for delivering best-in-class performance across any application.



Copper Systems

Leviton copper systems combine industry-leading performance with high-density, user-friendly designs to deliver the most innovative family of solutions. Whether you are supporting a large enterprise, data center, or a small business infrastructure, Leviton has the system to fit your needs. Refer to the system features below and on the following pages for an overview of Leviton's three copper system brands: Atlas-X1, eXtreme, and GigaMax.



MISSION CRITICAL

← Category 8 solutions

Plenum-rated

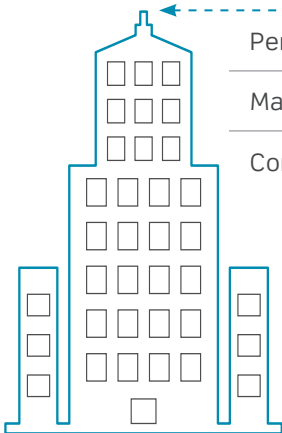
High-performance wireless and AV support

High-density shielded system with shorter depth jack for better bend radius

Advanced features (icons, shutters) for clear network ID and protection

Unified form factor (Cat 5e to Cat 8) and termination style for easy migration

Shielded systems for EMI/RFI protection

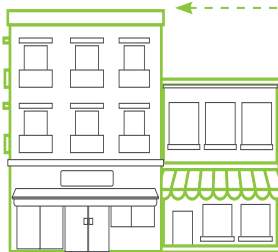


ENTERPRISE

← Performance exceeds the standard

Margin guarantees for confidence in performance

Component-rated products available



**LIGHT COMMERCIAL
MDU**

← PoE performance exceeds the standard

Third-party tested and verified

13 color options

Limited Lifetime Warranty

GigaMax™

UTP Cat 5e

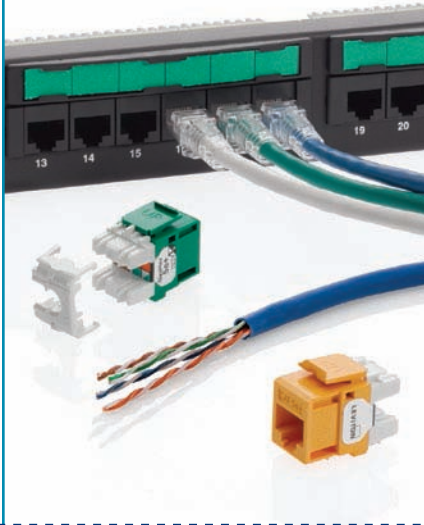
Delivers proven performance with the reliability you have come to expect from Leviton's category 5e solutions.



eXtreme™

UTP 6 | 6A

Pairs high-quality and performance with a user-friendly design to support fast, easy installations.



Atlas-X1™

UTP Cat 6 | 6A
Shielded Cat 6 | 6A | 8

A premium category-rated system that delivers the highest level of verified performance and reliability. Capable of supporting high-performance wireless, high-definition AV and emerging high-power PoE applications.



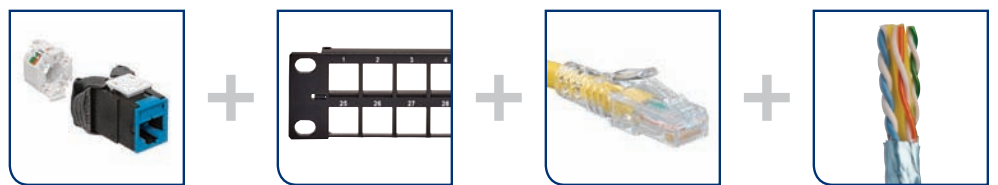
STANDARD SYSTEM

ENHANCED SYSTEM

PREMIUM SYSTEM



MISSION CRITICAL: DATA CENTERS, LABS, UNIVERSITIES, HOSPITALS, INDUSTRIAL, FINANCIAL



Atlas-X1™

Our premium category-rated system delivers the highest level of verified performance and reliability, offers tool-free termination for simplified installations, and is easily scalable for migrations up to 40GBASE-T. Made in the USA, the plenum-rated Atlas-X1 is ideal for deployment in all types of mission-critical networks, and exceeds Power over Ethernet (PoE) standards up to 100 watts.

UTP CAT 6 | CAT 6A — SHIELDED CAT 6 | CAT 6A | CAT 8

Innovative wire manager with strain relief and door-release levers support quick, repeatable terminations

Patented triple-stage compensation provides industry-leading performance (Cat 6A only)

Atlas-X1 UTP Jack

The only category-rated metal-bodied UTP jack that delivers the highest performance in a scalable, unified form factor (Cat 5e to Cat 8). Manufactured in the United States.

Fast and simple tool-free terminations

Patented Retention Force Technology™ (RFT) protects against tangle damage

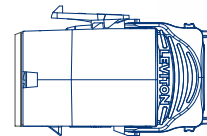
Interchangeable icons in 13 colors for easy identification (select jacks include color matching icons and pack of 72 icons also sold separately)

PoE optimized tine geometry prevents damage from arcing at contact mating zone between plug and jack

Supports frequent moves, adds, and changes increasing system longevity

Recommended Patch Panels for Atlas-X1 UTP System

Simple termination and improved cable routing combined with strength and durability to provide a reliable, high-density patching solution.



Solid metal body provides unparalleled durability in a UTP jack and dissipates heat 53% better than plastic jacks for PoE applications

Atlas-X1™ UTP

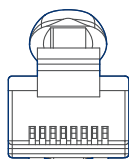
MISSION CRITICAL: DATA CENTERS, LABS, UNIVERSITIES, HOSPITALS, INDUSTRIAL, FINANCIAL

11082059



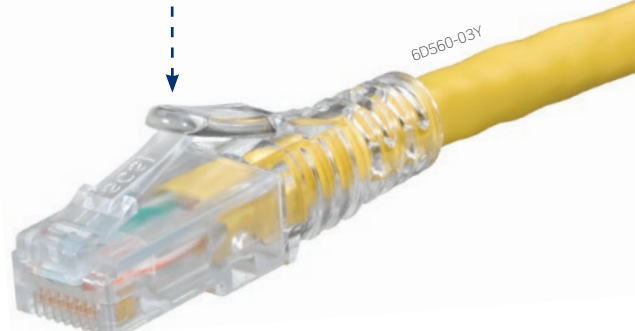
Cat 6A UTP Cable for Atlas-X1™ System

Small diameter LANmark™-XTP cable utilizes patented technology to provide superior alien crosstalk (AXT) suppression while increasing pathway capacity and improving airflow to critical active equipment.



Narrow profile for easier access in tight spaces

Snagless design prevents tab breakage

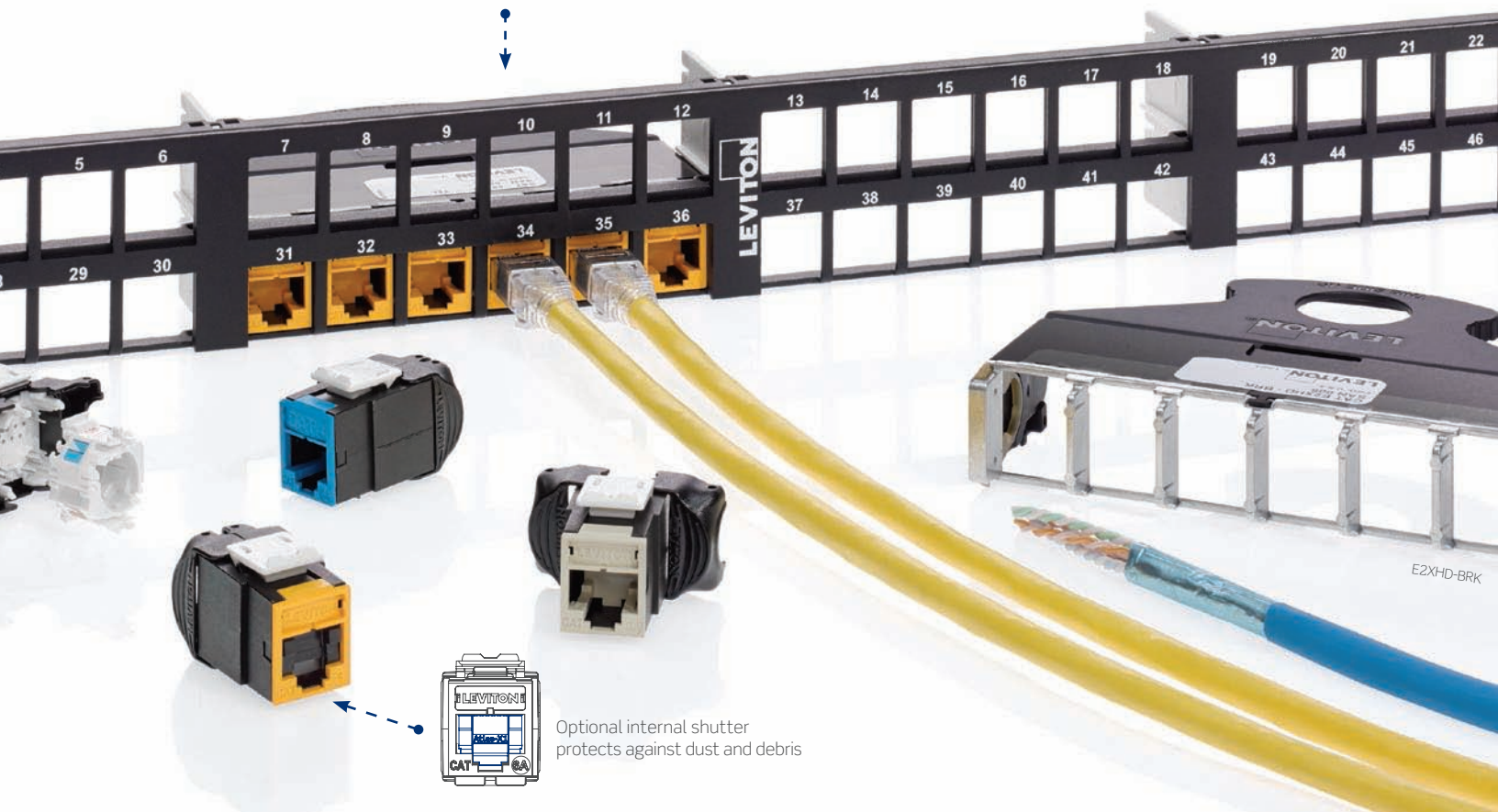


Provides AXT and EMI resistance without requiring grounding or bonding

Atlas-X1 UTP Patch Cords

High performing patch cords designed with a narrow profile to alleviate congestion in high-density applications.

Snap-in e2XHD cassettes make it easy to deploy networks quickly, supports UTP and shielded jacks



Optional internal shutter protects against dust and debris

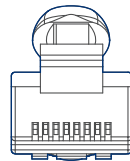
UTP CAT 6 | CAT 6A

Snagless design prevents
tab breakage

Shielded Cable for Atlas-X1 System

Supports the most advanced mission-critical applications with a smaller, innovative design that improves signal isolation, reduces termination time, and minimizes material costs.

Increased signal isolation prevents
contaminant noise from entering
cabling system

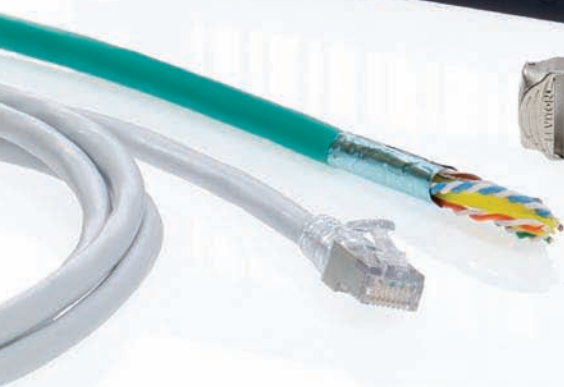


Narrow profile
for easier access
in tight spaces

Atlas-X1 Shielded Patch Cords

High-performing patch cord designed with a narrow profile boot to alleviate congestion in high-density shielded applications.

Shielding protects against Electromagnetic Interference (EMI) and Radio Frequency Interference (RFI), and provides excellent alien crosstalk (AXT) suppression



Interchangeable icons in 13 colors for easy identification (select jacks include color matching icons and pack of 72 icons also sold separately)



Fast and simple
tool-free terminations



Optional internal shutter
protects against dust and debris

Atlas-X1™ Shielded

MISSION CRITICAL: DATA CENTERS, LABS, UNIVERSITIES, HOSPITALS, INDUSTRIAL, FINANCIAL

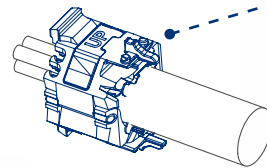
Patented Retention Force Technology™ (RFT) protects against tine damage and increases system longevity

PoE optimized pin array geometry prevents damage from arcing at contact mating zone between plug and jack

Atlas-X1™ Shielded Jack

The only category-rated shielded jack available in 13 colors for greater network planning flexibility. Manufactured in the United States.

Stainless-steel “comb” maintains consistent ground path between jack and panel



Innovative wire manager with strain relief and door-release levers support quick, repeatable terminations

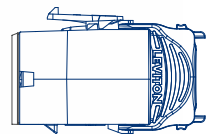
Patented triple-stage compensation provides industry-leading performance (Cat 6A and 8 only)



Atlas-X1 Shielded Patch Panels

Industry-leading durability with exceptional alien crosstalk (AXT) suppression and enhanced protection against Electromagnetic and Radio Frequency Interface (EMI/RFI).

360° grounding on shielded wire manager with integrated drain wire capture



Solid metal body provides unparalleled durability in a shielded jack

Shorter depth shielded jack improves bend radius and density

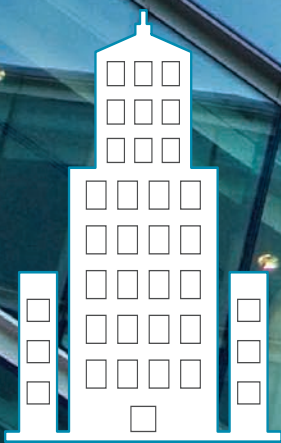
Outside diameter of 6.2 mm ensures ease of management



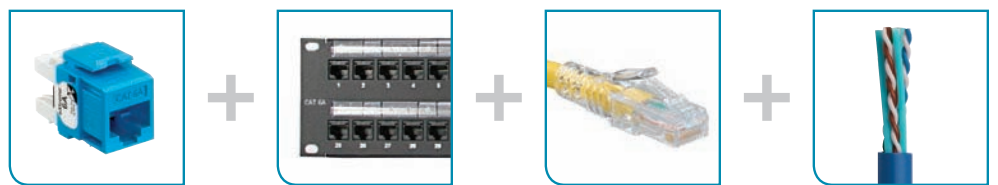
Cat 8

The Atlas-X1 Cat 8 System is built for advanced data center networks, creating a flexible and scalable copper infrastructure that will grow as your business grows.

SHIELDED CAT 6 | CAT 6A | CAT 8



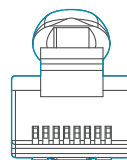
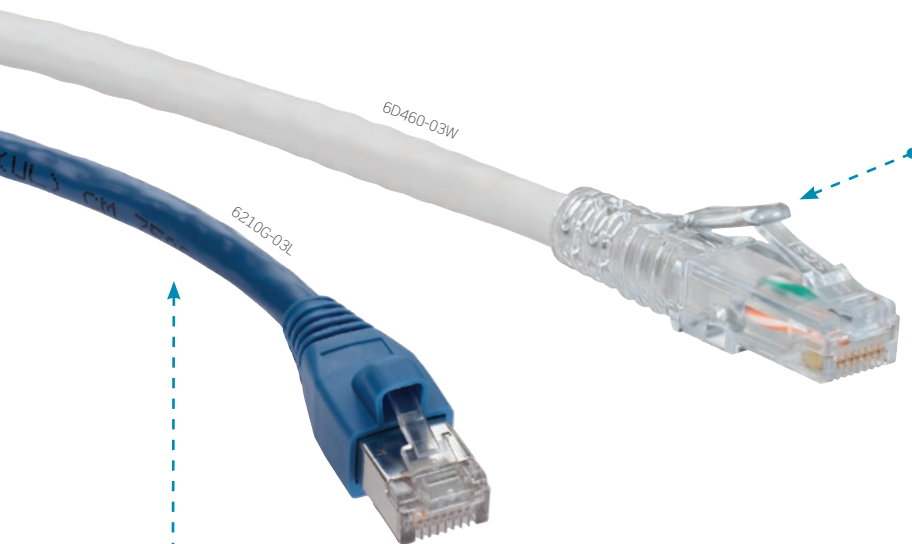
ENTERPRISE: K-12, OFFICE BUILDINGS, TELECOMMUNICATIONS ROOMS



eXtreme™

The Leviton eXtreme copper system pairs high-quality, guaranteed performance with a user-friendly design to support fast, easy installations. With enhanced performance and unmatched system longevity, the eXtreme copper system is well suited for an extensive range of enterprise and commercial networks, and exceeds PoE standards up to 100 watts.

UTP CAT 6 | CAT 6A



Snagless design prevents tab breakage on Cat 5e and 6

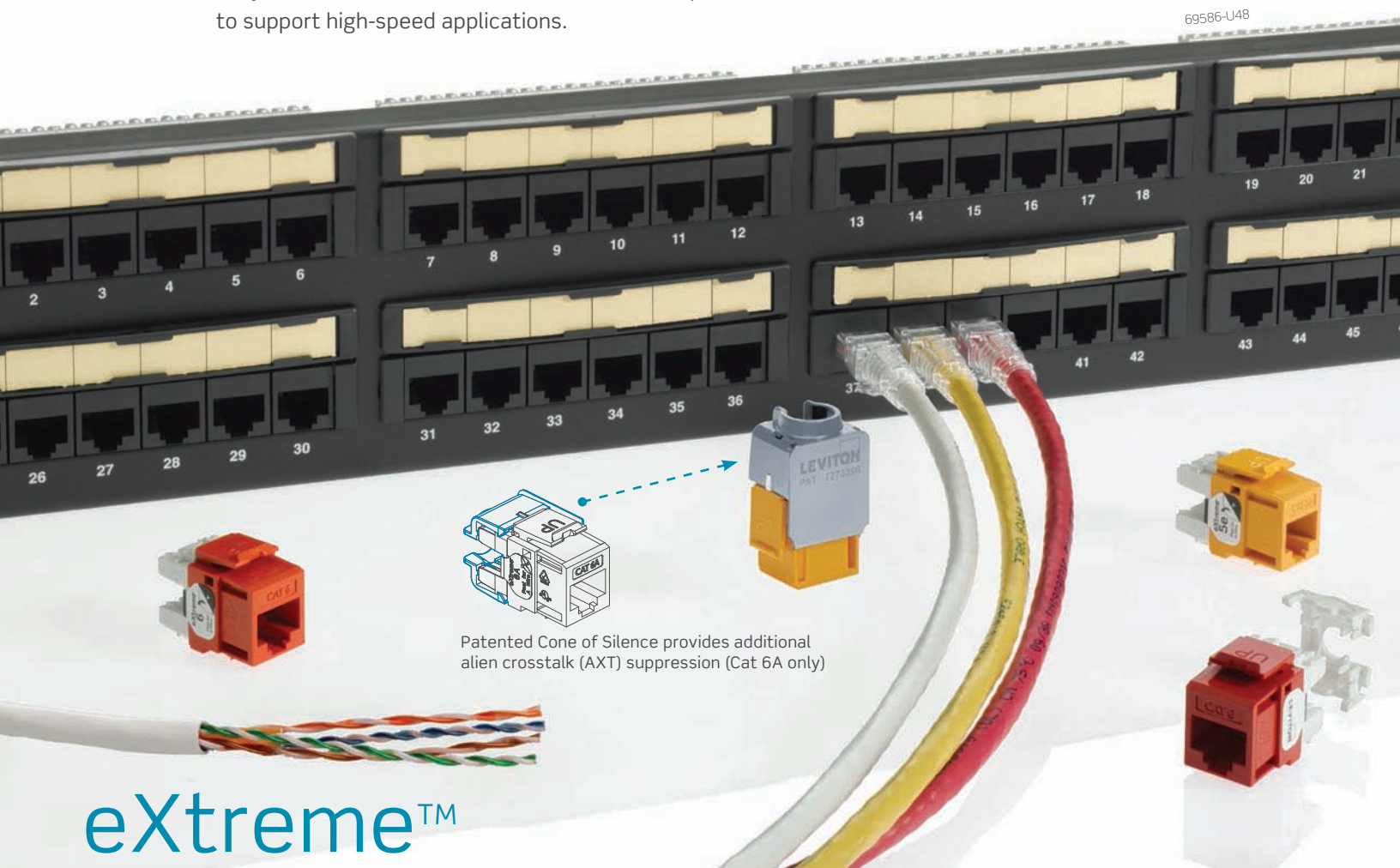
Stranded conductors support long-term channel integrity for Cat 6A

eXtreme UTP Patch Cords

Supports traditional density panels and switches, and the snagless plug enables easy moves, adds, and changes.

Recommended Patch Panels for eXtreme System

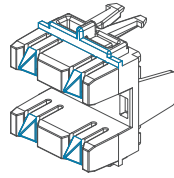
Easy installation and available in a multitude of port densities to support high-speed applications.



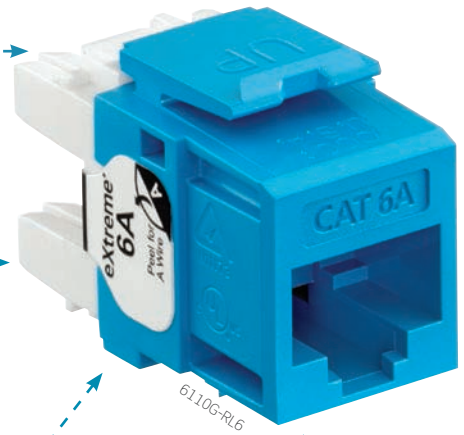
eXtreme™

ENTERPRISE: K-12, OFFICE BUILDINGS, TELECOMMUNICATIONS ROOMS

Innovative cutting ledge and pair separation towers simplify punchdown, reduce rework, and support faster terminations

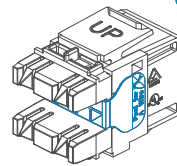


Compatible with Fluke JackRapid™ Punchdown for quick and easy terminations

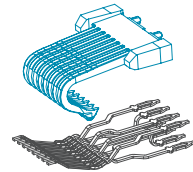


eXtreme™ Jack

Enhanced category-rated jack tested to stringent requirements to ensure performance is above the industry standard.

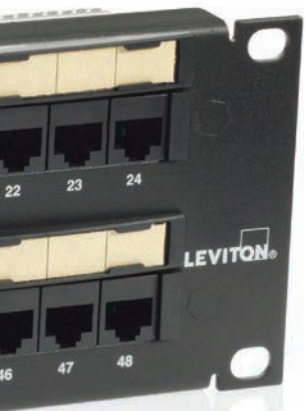


Patented tear-away dual-layer T568A/B label for faster and easier field terminations



Patented Retention Force Technology™ (RFT) protects against wire damage and increases system longevity

Available in flat and angled



Improved insertion loss for stronger signal-to-noise ratio

Compatible with Fluke JackRapid™ Punchdown and Leviton Palm Tool for quick and easy terminations



Cable for eXtreme System

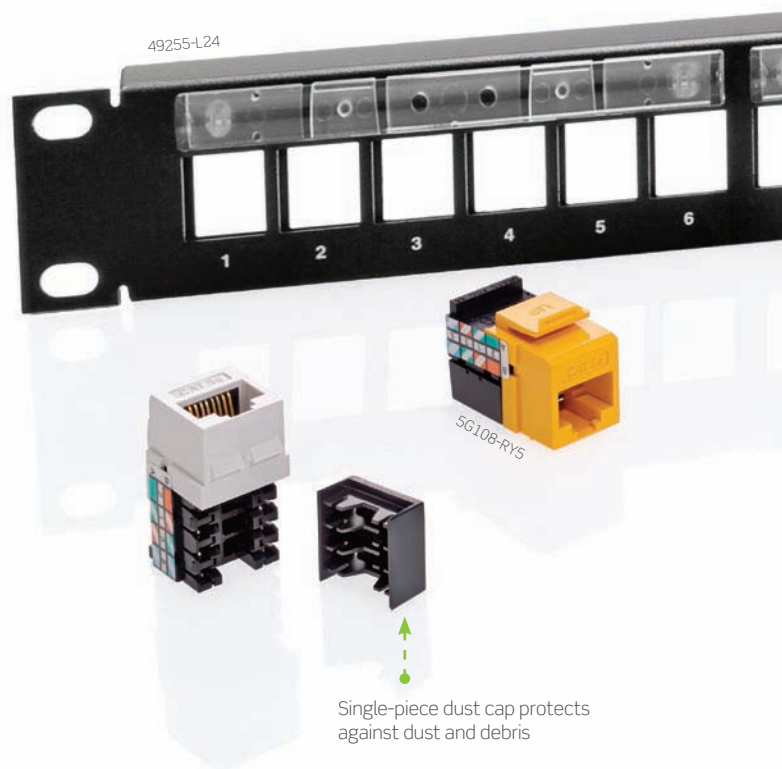
A true multimedia solution, capable of handling voice, video, and data up to 10 gigabit Ethernet speeds. The patented design minimizes alien crosstalk while supporting high-density applications.

UTP CAT 6 | CAT 6A



Recommended Patch Panels for GigaMax System

Wide selection of panels that allow you to mix and match voice, data, video, and audio, all in a single panel.



GigaMax™

The GigaMax Cat 5e UTP system delivers reliable, field-proven performance. This cost-effective structured cabling system is ideal for small commercial and MDU environments, with PoE lighting, and exceeds PoE standards up to 140 watts.

LIGHT COMMERCIAL AND MDU: APARTMENT BUILDINGS, MIXED USE BUILDINGS, SMALL BUSINESSES

Cost-effective patching solution, field proven to reliably support 1000BASE-T applications.

Atlas-X1™

UTP CAT 6 | CAT 6A — SHIELDED CAT 6 | CAT 6A | CAT 8

MISSION CRITICAL: DATA CENTERS, LABS, UNIVERSITIES, HOSPITALS, INDUSTRIAL, FINANCIAL



Atlas-X1 UTP System Components

Cat 6

Cat 6A

Atlas-X1 UTP Jacks	61UJK-R*6	[A] 6AUJK-R*6
Atlas-X1 UTP Jacks with Shutters	61UJK-S*6	6AUJK-S*6
Atlas-X1 Bulk Icons (pack of 72)	ICONS-IC*	ICONS-IC*
Patch Panels	[B] Select from our extensive patch panel selection shown on pages 18-19	
Atlas-X1 UTP Patch Cords	6D560-xx+	[C] 6AS10-xx+
Berk-Tek Plenum UTP Cable, Blue	10163222^	[D] 11082057^
Berk-Tek Riser UTP Cable, Blue	10167476^	11082062^

* = Choose from any color swatches shown below

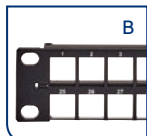
= Color: White (W), Yellow (Y), Blue (L), Green (G), Gray (S)

+ = Color: White (W), Yellow (Y), Red (R), Blue (L), Green (G), Gray (S), Black (E)

xx = Length in feet

^ = Cat 5e: LANmark-350 - 1500' smartPAK; Cat 6: LANmark™-2000 - 1000' Reel; Cat 6A: LANmark™-XTP - 1000' Reel (additional colors available)

Jack Color Options:



Atlas-X1 Shielded System Components

Cat 6

Cat 6A

Cat 8

Atlas-X1 Shielded Jacks	61SJK-R*6	[E] 6ASJK-R*6	81SJK-R*8
Atlas-X1 Shielded Jacks with Shutters	61SJK-S*6	6ASJK-S*6	
Atlas-X1 Bulk Icons (pack of 72)	ICONS-IC*	ICONS-IC*	ICONS-IC*
Atlas-X1 Flat Shielded QuickPort™ Patch Panels	[F] 4S255-xxx	4S255-xxx	4S255-xxx
Atlas-X1 Angled Shielded QuickPort Patch Panels	4S256-xxx	4S256-xxx	4S256-xxx
e2XHD 1RU 48-Port Patch Panel	E2X1x-S48	E2X1x-S48	E2X1x-S48
e2XHD Cassette†	E2XHD-BRK	E2XHD-BRK	E2XHD-BRK
Atlas-X1 Shielded Patch Cords	6S560-xxS	[G] 6AS10-xx+	81Z10-S##
Berk-Tek Plenum Shielded Cable, 1000' Reel, Gray	10057903^	10167487^	Contact Us
Berk-Tek Riser Shielded Cable, 1000' Reel, Gray	10070439^	[H] 10189798^	

* = Choose from any color swatches shown below

x = Flat (F), Angled (A)

= Length in meters: 0.5 (D5), 1 (01), 2 (02), 3 (03), 4 (04), 5 (05)

xx = Length in feet

Jack Color Options:

* = Color: Gray (S), Black (E)

† = Sold empty, load with any Atlas-X1™, eXtreme™, or GigaMax™ QuickPort jacks

+ = Color: White (W), Yellow (Y), Red (R), Blue (L), Green (G), Gray (S), Black (E)

xxx = 1RU 24-Port (S24), 1RU 48-Port (D48), 2RU 48-Port (S48)

^ = Cat 5e: LANmark™-5e FTP; Cat 6: LANmark-6™ FTP; Cat 6A: LANmark™-10G FTP (additional colors available)



eXtreme™

UTP Cat 6 | Cat 6A

ENTERPRISE: K-12, OFFICE BUILDINGS, TELECOMMUNICATIONS ROOMS



eXtreme UTP System Components

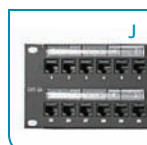
Cat 6

Cat 6A

eXtreme UTP Jacks

[I] 61110-R*6

6110G-R*6



Patch Panels

[J] Select from our extensive patch panel selection shown on pages 18-19

eXtreme UTP Patch Cords

6D460-xx+
62460-xx+
6H460-xx+

[K] 6210G-xx+



Berk-Tek Plenum UTP Cable, Blue

11074694^

[L] 10130484^

Berk-Tek Riser UTP Cable, Blue

11074701^

10137700^



* = Choose from any of the color swatches shown below

xx = Length in feet

± = Color: White (W), Yellow (Y), Blue (L), Green (G), Gray (S)

+ = Color: White (W), Yellow (Y), Red (R), Blue (L), Green (G), Gray (S), Black (E)

^ = Cat 5e: LANmark™-350, 1500' smartPAK; Cat 6: LANmark™-1000, 1500' smartPAK; Cat 6A: LANmark™-10G2, 1000' Reel (additional colors available)

Jack Color Options:

W

T

I

Y

O

C

R

P

L

V

G

E

B

GigaMax™

UTP Cat 5e

LIGHT COMMERCIAL AND MDU: APARTMENT BUILDINGS, MIXED USE BUILDINGS, SMALL BUSINESSES



GigaMax UTP System Components

Cat 5e

GigaMax UTP Jack

[M] 5G108-R*5

Patch Panels

[N] Select from our extensive patch panel selection shown on pages 18-19

GigaMax UTP Patch Cord

[O] 5G460-xx+

Berk-Tek HyperPlus Plenum UTP Cable,
Gray, 1500' smartPAK

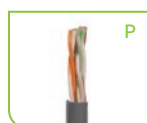
[P] 11074747

Berk-Tek HyperPlus UTP Riser, Gray, 1500' smartPAK

11074749

Berk-Tek LANmark-IP Cable, Gray, 1000' Reel in Box

11098080



* = Choose from any of the color swatches shown below

+ = Color: White (W), Yellow (Y), Blue (L), Green (G), Gray (S)

xx = Length in feet

Jack Color Options:

W

T

I

Y

O

C

R

P

L

V

G

E

B

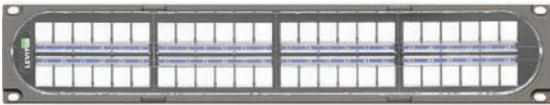
UTP Patch Panels

Leviton offers the industry's largest selection of high-quality patch panels to support the latest technologies and provide ideal configurations for any application.



e2XHD - Simple termination and improved cable routing. Cassettes quickly snap in and pull out of high-density panels, making installation and maintenance easier than ever. Panel covers and cassette blanks offer extra protection against dust and damage. Supports UTP and shielded.

Recommended for: **Atlas-X1™ UTP and Shielded**



Composite - Combines strength and durability with a sleek look. The unique style and customizable face make it ideal for showcase environments, and provide a uniform appearance when installed with Versi-duct™ Cable Managers. The panel is 100% recyclable and made in the United States.

Recommended for: **Atlas-X1 (QuickPort™)**



QuickPort - Wide selection of panels allow you to create the perfect mix of voice, data, video, and audio, all in a single panel.

Recommended for: **Atlas-X1, eXtreme™, and GigaMax™**



110-Style - Ideal for modular cross connection and available in a multitude of port densities to meet the needs of high-speed data applications. Craft-friendly 110 punchdowns on the rear of the panel make installations fast and easy.

Recommended for: **All applications**

UTP Patch Panels		Cat 5e	Cat 6	Cat 6A
e2XHD Supports UTP and Shielded	1RU 48-Port Flat*	E2X1F-S48	E2X1F-S48	E2X1F-S48
	1RU 48-Port Angled*	E2X1A-S48	E2X1A-S48	E2X1A-S48
	Cassette*	E2XHD-BRK	E2XHD-BRK	E2XHD-BRK
Composite	2RU 48-Port Flat, 110-Style ^	C1586-U48	C1686-U48	—
	2RU 48-Port Flat*, QuickPort	C1255-H48	C1255-H48	C1255-H48
QuickPort™	1RU 24-Port Flat, kitted with jacks ^	5G270-U24	69270-U24	6910G-U24
	2RU 48-Port Flat, kitted with jacks ^	5G270-U48	69270-U48	6910G-U48
	1RU 24-Port Flat*	49255-H24	49255-H24	49255-H24
	1RU 48-Port Flat*	49255-Q48	49255-Q48	49255-Q48
	2RU 48-Port Flat*	49255-H48	49255-H48	49255-H48
	2RU 72-Port Flat*	49255-D72	49255-D72	49255-D72
	1RU 24-Port Flat with magnifying lens holder*	49255-L24	49255-L24	49255-L24
	2RU 48-Port Flat with magnifying lens holder	49255-L48	49255-L48	49255-L48
	1RU 48-Port Flat, Die-Cast, kitted with jacks ^	5G270-D48	69270-D48	—
	1RU 48-Port Flat, Die-Cast*	49255-D48	49255-D48	49255-D48
	1RU 24-Port Angled*	49256-H24	49256-H24	49256-H24
	1RU 48-Port Angled*	49256-D48	49256-D48	49256-D48
	2RU 48-Port Angled*	49256-H48	49256-H48	49256-H48
	2RU 72-Port Angled*	49256-D72	49256-D72	49256-D72
	1RU 24-Port Recessed-Flat*	49255-R24	49255-R24	49255-R24
	2RU 48-Port Recessed-Flat*	49255-R48	49255-R48	49255-R48
110-Style	1RU 12-Port Flat	5G596-U12	69586-U12	—
	1RU 24-Port Flat	5G596-U24	69586-U24	6A586-U24
	2RU 48-Port Flat	5G596-U48	69586-U48	6A586-U48
	4RU 96-Port Flat	5G596-U96	69586-U96	—
	2RU 48-Port Flat with central labeling	5G596-C48	69586-C48	—
	1RU 24-Port Angled	5G597-U24	69587-U24	6A587-U24
	2RU 48-Port Angled	5G597-U48	69587-U48	6A587-U48

* = Sold empty, load with any Atlas-X1™, eXtreme™, or GigaMax™ QuickPort jacks

^ = Kitted with eXtreme jacks

Today's networks must be fast and reliable, with the flexibility to handle ever-increasing data demands. Leviton can help expand your network possibilities and prepare you for the future. Our end-to-end cabling systems feature robust construction that reduces downtime, and performance that exceeds standards. We offer quick-ship make-to-order solutions from our US and UK factories. We even invent new products for customers when the product they need is not available. All of this adds up to the **highest return on infrastructure investment.**

NETWORK SOLUTIONS DIVISION HEADQUARTERS

2222 - 222nd Street S.E., Bothell, WA 98021 USA | leviton.com/ns

Inside Sales (800) 722 2082 insidesales@leviton.com
International Inside Sales +1 (425) 486 2222 intl@leviton.com
Technical Support (800) 824 3005 / +1 (425) 486 2222 appeng@leviton.com

NETWORK SOLUTIONS EUROPEAN HEADQUARTERS

Viewfield Industrial Estate, Glenrothes, Fife KY6 2RS, UK | leviton.com/ns/emea

Customer Service +44 (0) 1592 772124 customerserviceeu@leviton.com
Technical Support +44 (0) 1592 778494 appeng.eu@leviton.com

NETWORK SOLUTIONS MIDDLE EAST HEADQUARTERS

Bay Square, Building 3, Office 205, Business Bay, Dubai - UAE | leviton.com/ns/middleeast

Customer Service +971 (4) 247 9800 lmeinfo@leviton.com

CORPORATE HEADQUARTERS

201 N. Service Road, Melville, NY 11747 USA | leviton.com

Customer Service (800) 323 8920 / +1 (631) 812 6000 customerservice@leviton.com

ADDITIONAL OFFICES

France +33 (0) 1709 87825
Spain +34 914 905 919
Italy (Milan) +39 02 3534 896 | (Rome) +39 06 8360 0665
Africa +971 (4) 247 9800 lmeinfo@leviton.com
Asia / Pacific +1 (631) 812 6228 infoasean@leviton.com
Canada +1 (514) 954 1840 pcservice@leviton.com
Caribbean +1 (954) 593 1896 infocaribbean@leviton.com
China +852 2774 9876 infochina@leviton.com
Colombia +57 (1) 743 6045 infocolombia@leviton.com
Latin America & Mexico +52 (55) 5082 1040 lsamarketing@leviton.com
South Korea +82 (2) 3273 9963 infokorea@leviton.com

ALL OTHER INTERNATIONAL INQUIRIES international@leviton.com

