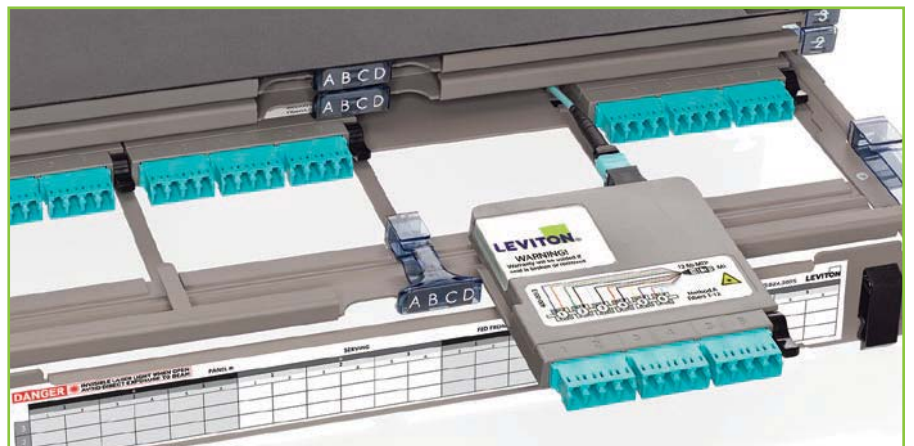
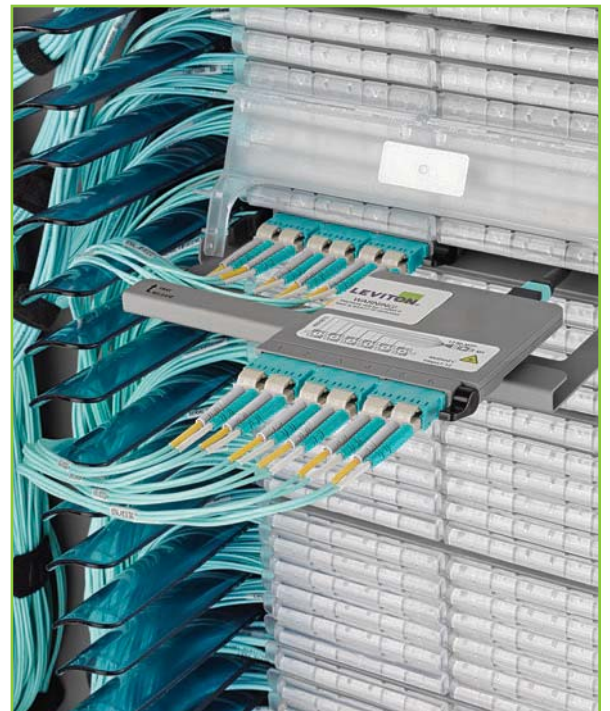


# FIBER SYSTEMS

Network Infrastructure Platforms for Every Application

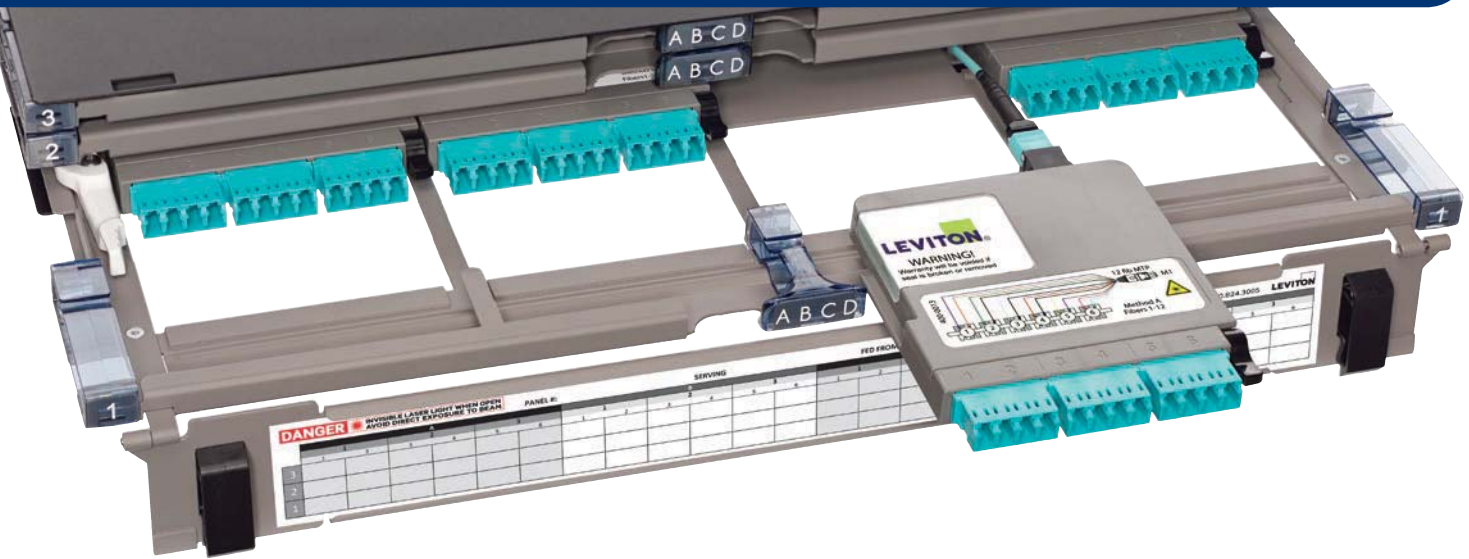


# FIBER SYSTEMS

Whether your installation is small or large, simple or complex, you can rely on Leviton for a network patching platform that meets your requirements. From cloud data center to remote telecom room, from service provider to enterprise office building, Leviton solutions are versatile enough to meet specific customer demands, ensuring migration options for future bandwidth growth and strong return on infrastructure investment.

System Features	Ultra high density (144F per RU)
	High density (96F per RU)
	Standard density (72F per RU)
	Angled panel eliminates need for patch cord cable manager
	Individual sliding trays minimize impact on surrounding fibers
	TAP Cassette option to monitor networks for performance and security
	One-handed, single-click cassette installation for easy deployment
	10/40/100/200/400 Gb/s Unity migration to simplify tech upgrades
	OM1 / OM2 / OM3 / OM4 / OS2 connector types for backward compatibility
	Precision-molded adapter plates for durable network connections
	Allows mix of copper and fiber for network flexibility
	Cassettes with adjustable rear MTP® adapters for improved bend radius
Field splicing capability	





144  
LC Fibers (1RU)



### Opt-X® UHDx Enclosures

UHDx offers the highest fiber density per rack unit along with easy port identification and cable management. Available in 1RU, 2RU, and 4RU sizes, UHDx Enclosures help consolidate patching and free up rack space.

- Up to 144 LC fibers in a 1RU enclosure, 288 LC fibers in a 2RU enclosure, and 576 LC fibers in a 4RU enclosure using HDX adapter plates or MTP® cassettes
- Individual sliding trays remove completely to facilitate field terminations
- Sliding tray glides forward, providing accessibility to front and rear bulkheads after installation



288  
LC Fibers (2RU)

144  
LC Fibers (1RU)



### Opt-X® UHDx Flat & Angled Panels

These ultra-high-density 1RU angled and flat panels minimize patching space in a rack or cabinet. The panels allow for easy plug-and-play of pre-terminated solutions and open access to patch cords.

- Capacity for up to 144 LC or 864 fibers (12-fiber MTP)
- Flat panel sits flush with the bulkhead for a low profile
- Angled panel eliminates the need for patch cord horizontal cable managers
- Fixed bulkhead shelf minimizes stress on fiber during moves, adds, and changes
- Rear cable manager (sold separately) provides support, routing, and protection

144  
LC Fibers (1RU)



3168

LC Fibers

## HDX Fiber Optic Distribution Frame

The HDX Frame is a main cross-connect or interconnect patching frame for all fiber channels in the data center. One frame consolidates patching into an incredibly small footprint, with capacity for up to 3,168 LC fibers, or 7,776 fibers using 12-fiber MTP connections.

The HDX Frame accomplishes such high density through its unique patch deck design. One frame holds 22 decks, each configured with HDX fiber cassettes, adapter plates, or splice trays. And since it occupies only one 2x2-foot data center floor tile, it's easier than ever to access space beneath a raised floor.



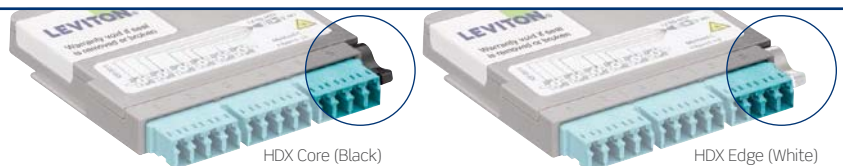
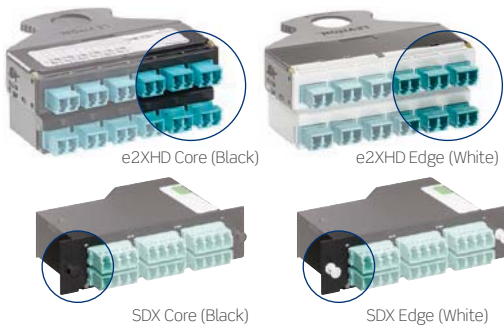
Patch Deck

- The frame keeps pathways clean and organized, using integrated cable management for minimum bend radius, better slack storage, and protection within the frame.

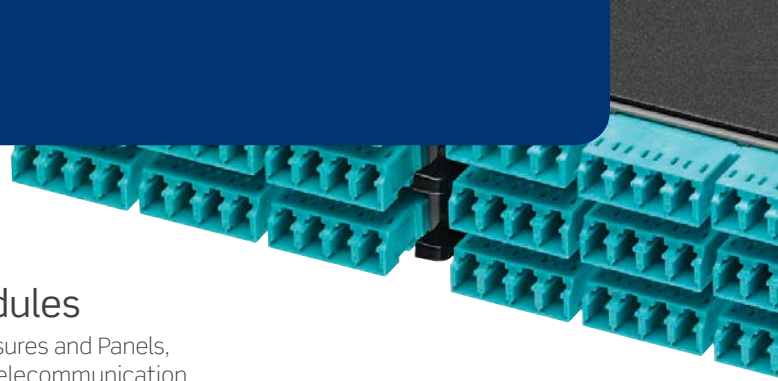
- HDX frames can be ganged together to handle future growth with easy pass-through cross-frame routing kits. And with 24-fiber MTP connectivity, they are ideal for migration from 10 to 40 to 100 Gb/s and beyond.
- The frame's open design greatly reduces time and labor for maintenance, as it allows unobstructed access to patch cord connections. The one-tile footprint makes it easier to access the space beneath a raised floor.



### SPOTLIGHT Core & Edge Cassettes



In order to achieve proper polarity when using Method B with two cassette configurations, core and edge cassettes must be used in pairs. This will simplify the design requirements for trunks and patch cords. For consistency, core cassettes are typically placed at the main connection point, at or close to the main switching equipment. Edge cassettes are placed at the end connection point, near access layer equipment. For easy identification, core cassette casing and pins are black, while edge cassette casing and pins are white.



## HDX Cassettes, Adapter Plates & Splice Modules

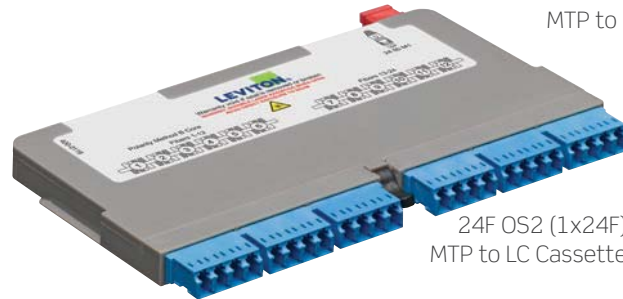
HDX Adapter Plates, Cassettes, and Splice Modules work with UHD X Enclosures and Panels, and the HDX Fiber Distribution Frame. They are ideal for data centers or telecommunication rooms with space limitations and growth needs, and can speed deployment and MACs through easy one-hand installation and removal. The HDX platform is recommended for 10 Gb/s or higher applications.

### HDX & HDX2 MTP Cassettes

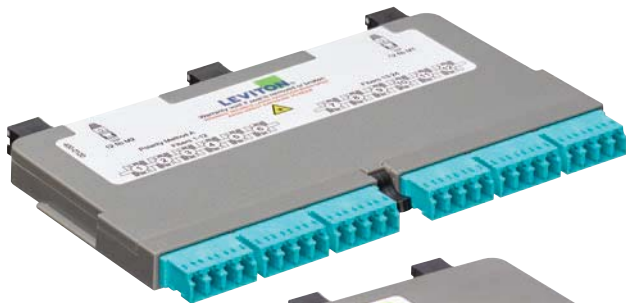
- 12- or 24-fiber MTP configurations
- Select from LC or MTP connectors for 10, 40, or 100 Gb/s applications
- Easy to migrate from 10 to 40/100 Gb/s when used with Opt-X Unity trunks, harnesses, or patch cords
- A variety of fiber types are available including single-mode, multimode, and laser-optimized multimode
- Easy, one-hand installation and removal
- Options for TAP Cassette to monitor network performance



12F OM3 (1x12F)  
MTP to LC Cassette



24F OS2 (1x24F)  
MTP to LC Cassette



40G to 10G, 24F OM4  
(3x8F) MTP to LC Cassette



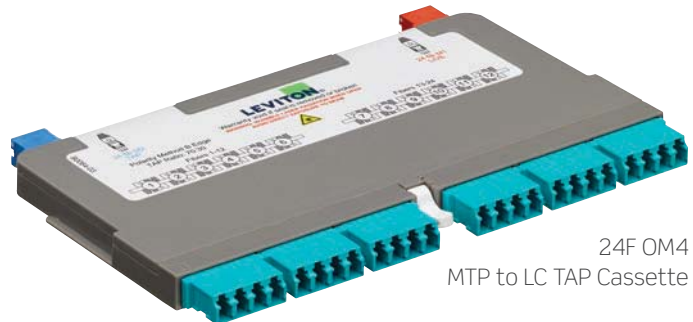
100G to 40G, 24F OM4 (2x12F)  
MTP to (3x8F) MTP Cassette

### HDX & HDX2 Conversion Cassettes

- Manage polarity to maintain, transmit, and receive connections between parallel optics and SFP connectivity
- Connect to electronics with LC ports and aggregates SFP ports to a QSFP28 or PSM4 (100G), QSFP+ (40G), or CXP (120G) port
- Configure up to 24 fibers for 3 channels (40 Gb/s) per cassette
- Fit in UHD X enclosures and panels
- Snap in and out of enclosure/panel for rapid installation, adds, and changes

### HDX2 TAP Cassettes

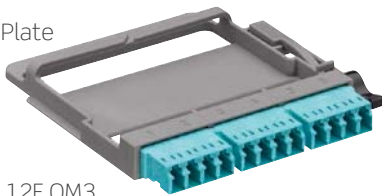
- Traffic analysis points (TAPs) provide real-time monitoring in network or SAN environments
- Support monitoring of 10 Gb/s and 40 Gb/s channels (QSFP)
- BiDi TAP available for 40 Gb/s



24F OM4  
MTP to LC TAP Cassette



3 Duplex  
MTP Adapter Plate



12F OM3  
LC Adapter Plate

#### HDX Adapter Plates

- Connect to field-terminated backbone cabling or pre-terminated trunks
- Easy, one-hand installation and removal
- LC, SC, and MTP® styles in 6, 12, or up to 72/144 fiber configurations
- Visible sequential numbering to identify ports (for Tx and Rx)

#### HDX LC & MTP® Splice Modules

- Modules integrate fiber adapter bulkhead (12 or 36 fibers) and splice holders, eliminating need for splice trays
- Innovative 12-fiber color-coded pigtail offers fusion splicing to either single fiber or ribbon fiber constructions
- Splice sleeves included in accessory kit
- MTP Splice Module offers field termination option to migrate from 10 to 40, 100, 200 or 400 Gb/s



36F OM4  
MTP Splice Module



12F OM4 LC Splice Module  
(Cable sold separately)





## e2XHD Snap-In Cassette Patching System

The e2XHD Fiber and Copper Patching System is an easy-to-connect, high-density solution for applications where fast deployment and simple maintenance are critical. The system includes 1RU universal panels, copper and fiber snap-in cassettes, and accessories for additional cable protection and management.

96  
LC Fibers (1RU)



96  
LC Fibers (1RU)



### Universal Panels

- Flat and angled panels allow for fiber and copper cabling in the same panel
- 1RU panels hold up to 96 fibers using LC (8 cassettes) or 48 copper ports (8 cassettes)
- Alignment tabs on panels ensure upright insertions of cassettes

### SPOTLIGHT

### e2XHD Copper Cassettes

e2XHD Copper Cassettes accept six UTP or Shielded QuickPort® jacks. The jacks easily snap into the cassette after termination, and can be removed using a QuickPort Jack Removal Tool. An AXT barrier on the cassette reduces alien crosstalk between ports.







## e2XHD Cassettes

e2XHD fiber and copper cassettes are used exclusively with e2XHD universal panels. They quickly snap in and pull out of the panels, making moves, adds, and changes easier than ever.



12F OM4 MTP to LC Cassette

### Fiber Cassettes

- Allow for a simple migration path to 40 and 100 Gb/s networks with MTP® cassettes
- MTP adapter swivel allows for easy cable routing and proper bend radius
- 12-fiber MTP and LC adapter cassettes use QuickPort® modular fiber adapters which can be removed with a QuickPort removal tool
- 100 to 10 Gb/s and 40 to 10 Gb/s conversion cassettes available



24F OM3 (1x24F) MTP to (3x8F) MTP Cassette



12F OS2 LC to LC Passthrough QuickPort Cassette

e2XHD Fiber Cassettes feature an MTP adapter that swivels to three positions for easier cable routing. Used in conjunction with a rear cable manager and cable management rings, the adapter delivers an ideal solution for eliminating cable tension and ensuring proper bend radius.



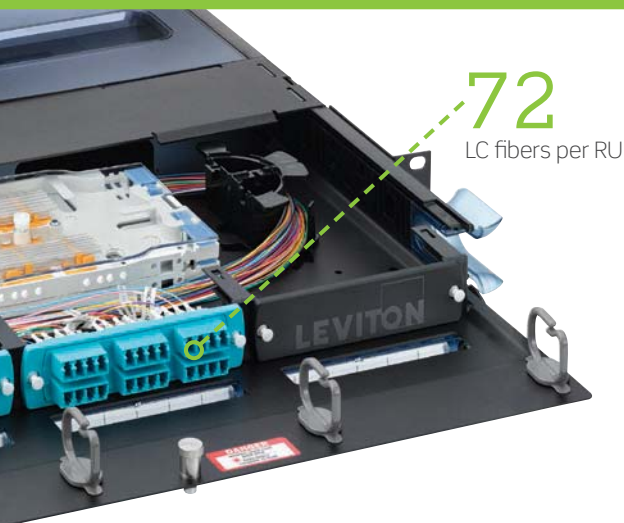
swivel left



center



swivel right



72  
LC fibers per RU

### Opt-X® 2000i SDX Enclosures

Designed for enterprise and data center applications, the Opt-X 2000i SDX Enclosure combines all our most popular features into one eye-catching platform.

- Up to 72 LC fibers in a 1RU enclosure, 144 LC fibers in a 2RU enclosure, and 288 LC fibers in a 4RU enclosure using SDX adapter plates
- Removable sliding tray releases from front or rear of enclosure to facilitate field terminations and splicing
- 17-inch depth for high-density fiber termination and/or splicing
- Removable, transparent hinged doors and slide-away covers allow easy access and visibility
- Accepts injection-molded splice trays and 4" x 7" metal splice trays

### Opt-X 1000i SDX Enclosures

These durable enclosures allow for easy field termination of connectors, splicing, or patching pre-terminated plug-n-play solutions.

- Up to 72 LC fibers in a 1RU enclosure, 144 LC fibers in a 2RU enclosure, 288 LC fibers in a 3RU enclosure, and 360 LC fibers in a 4RU enclosure using SDX adapter plates
- 15-inch depth for high-density fiber termination and/or splicing
- Removable front and rear covers for better access to interior of enclosure
- Accepts injection-molded splice trays and 4" x 7" metal splice trays



144  
LC fibers (2RU)



144  
LC fibers (2RU)

### Opt-X 500i SDX Enclosures

Ideal for small enterprise applications, the economical 500i Rack-Mount Enclosure features a one-piece removable cover for complete accessibility to the back of the enclosure.

- Flush-mount adapter bulkhead for ease of moves, adds, and changes
- Accepts injection-molded splice trays and 4" x 7" metal splice trays
- Flush-mount panels available in 1RU, 2RU, and 3RU sizes
- Optional patch cord management tray installs directly to front of enclosure

### Opt-X 500i SDX Panels

Designed to use minimum rack space in a frame or cabinet, the 500i Panel supports easy field termination and is ideal for small-enterprise applications.

- Flush-mount adapter bulkhead makes moves, adds, and changes easy
- Stackable fiber rings simplify cable routing and organization
- Available in 1RU and 3RU sizes



72  
LC fibers (1RU)

48  
LC fibers (small)



Small Wall-Mount Enclosure



Mini Wall-Mount Enclosure



## Opt-X® SDX Wall-Mount Enclosures

Leviton Opt-X SDX Wall-Mount enclosures are designed to deploy in entrance facilities, telecommunications rooms, and remote network hubs that require patching, cross-connect or splicing while using a minimum of space.

- Four sizes available, accommodating 24 to 288 LC fibers
- Network security: Includes locking doors and dual-door access to separate user and service sides
- Space savings: Compact zero-RU, wall-mount, and DIN-rail mounting options
- Network consistency: Enclosures accommodate both Leviton SDX and HDX patching platforms
- Field splicing: Includes both splice trays and self-contained splice modules
- Accepts injection-molded splice trays and 4" x 7" metal splice trays

## SDX Adapter Plates & Cassettes

SDX cassettes and adapter plates recommended for 1 Gb/s applications or higher and are ideal for infrastructure that requires easier cable management.



12F OS2 Adapter Plate



24F OM3 and OM4 Adapter Plate

### SDX Adapter Plates

- Unique precision-molded design is eight times stronger than metal adapter plates
- Captive push/pull fasteners for tool-free installation and removal
- Available in 6- to 24-fiber plates for LC, SC, and ST and 72- to 192-fiber plates for MTP®

### SDX MTP Cassettes

- Plug-n-play cassette eliminates the need for field termination or splices
- All cassettes use either 24-fiber or 12-fiber low-loss MTP connectors
- 100% factory tested with test results included with each cassette
- Allows easy migration from 10 to 40 or 100 Gb/s



12F OM4  
MTP to LC Cassette

24F OM4  
MTP to LC Cassette



## SPOTLIGHT Migrate to the HDX Platform



Retrofit Tray

Adapter Bracket

Retrofit Trays are available to upgrade your current 1RU or 2RU Opt-X 2000i SDX or 1000i SDX enclosure to accept high-density HDX cassettes and adapter plates. HDX-to-SDX Adapter Brackets are available to accommodate deployment of HDX cassettes within 2000i SDX, 1000i SDX, 500i SDX, or SDX Wall-Mount enclosures.

## 1 Select Enclosures & Panels

		Maximum Capacity				Part No.	Mission Critical	Enterprise / DC	Service Provider
		Fibers using LC	Adapter Plates pass-through	AND Splice Trays*	OR Cassettes				
1RU	UHDX Enclosure, empty	144	12	—	12	5R1UD-S12	X		
	UHDX Angled Panel, empty	144	12	—	12	HDX1A-144	X		
	UHDX Flat Panel, empty	144	12	—	12	HDX1F-144	X		
	e2XHD Universal Panel, empty, flat	96	8	—	8	E2X1F-S48	X		
	e2XHD Universal Panel, empty, angled	96	8	—	8	E2X1A-S48	X		
	2000i SDX Enclosure, empty, with sliding tray	72	3	3	3	5R1UH-S03		X	
	1000i SDX Enclosure, empty	72	3	3	3	5R1UM-F03		X	
	1000i SDX Enclosure, empty, with sliding tray	72	3	3	3	5R1UM-S03		X	
	500i SDX Panel, empty	72	3		3	5R1UE-0PX		X	
	500i SDX Enclosure, empty, metal cover/door	72	3	3	3	5R1UL-F03		X	
2RU	UHDX Enclosure, empty	288	24	—	24	5R2UD-S24	X		
	2000i SDX Enclosure, empty, sliding tray	144	6	6	6	5R2UH-S06		X	
	1000i SDX Enclosure, empty, metal door	144	6	6	6	5R2UM-F06		X	
	1000i SDX Enclosure, empty, metal door, with sliding tray	144	6	6	6	5R2UM-S06		X	
	500i SDX Enclosure, empty, metal cover/door	144	6	6	6	5R2UL-F06		X	
3RU	1000i SDX Enclosure, empty, metal door (vertical adapter/module)	288	12	12	12	5R3UM-F12		X	
	500i SDX Enclosure, empty, metal cover	288	12	12	12	5R3UL-F12		X	
	500i SDX Panel, empty	288	12	12	12	5R3UE-0PX		X	
	1000i SDX Enclosure, empty, metal door (horizontal adapter/module)	216	9	9	9	5R3UM-F09		X	
4RU	UHDX Enclosure, empty	576	48	—	48	5R4UD-S48	X		
	1000i SDX Enclosure, empty, metal door (horizontal adapter/module)	360	15	15	15	5R4UM-F15		X	
	2000i SDX Enclosure	360	12	12	12	5R4UH-S12		X	
	1000i SDX Enclosure, empty, metal door (vertical adapter/module)	288	12	12	12	5R4UM-F12		X	
WALL MOUNT	Mini SDX Enclosure, empty with dual door, no lock	24	1	—	1	5WMNT-01C^		X	
	Small SDX Enclosure, empty with dual door, no lock	48	2	2	2	5WSML-02C^		X	
	Medium Enclosure, empty with dual door, no lock	96	4	4	4	5WMED-04C^		X	
	Large Enclosure, empty with dual door, no lock	288	12	12	12	5WLRG-12C^		X	
FRAME	HDX Fiber Distribution Frame	3,168**	264	198	264	F3168-22F	X		X

\* = Max splice tray capacity is dependent on height of splice tray. See page 15.  
 \*\* = When loaded with 22 HDX Frame Patch Decks (Part no. F3168-DCK)

^ = Contact Inside Sales for white colored option. Minimum order quantities and lead time may apply.

## 2 Select Enclosure Accessories

			UHD	HDX Frame	e2XHD	2000i SDX	1000i SDX	500i SDX	SDX Wall Mount
Fan-Out Kit	24" Fiber Optic Fan-out Kit, 6-fiber	49887-06S				X	X	X	X
	24" Fiber Optic Fan-out Kit, 12-fiber	49887-12S				X	X	X	X
	36" Fiber Optic Fan-out Kit, 6-fiber	49887-06L				X	X	X	X
	36" Fiber Optic Fan-Out Kit, 12-fiber	49887-12L				X	X	X	X
Fiber Rings	Fiber Cable Management ¼ Ring Kit	5R100-14R			X	X	X	X	
Cable Clamp Kit	Enclosure-mount Universal Clamp Kit (single cable grommet)	5RCMP-KIT	X		X	X	X	X	X
	Enclosure-mount Universal Clamp Kit (multiple cable grommet)	5RCMP-KT2	X		X	X	X	X	X
	Rack-mount Universal Clamp Kit (single and multiple cable grommet)	5RCMR-KIT	X		X	X	X	X	
	HDX Fiber Distribution Frame Cable Clamp Kit (single cable grommet)	F3168-CCK		X					
Grounding Kit	Universal Grounding Kit	DPGRD-KIT	X		X	X	X	X	X
Locks & Keys	SDX Series Lock and Key	5L000-KAL					X		X
Mounting Options	HDX-to-SDX Adapter Bracket	HDXAD-ACC				X	X	X	X
	DIN Rail Bracket Kit (for mini enclosure only)	DNRAL-ACC							X
	0RU Mounting Bracket, bag of 2 (for mini enclosure only)	5WMNB-ACC							X
e2XHD	e2XHD Rear Cable Manager for Angled Panel, with cable management rings	E2XHD-CMB	X		X				
	e2XHD Rear Cable Manager for Flat Panel, with cable management rings	E2XIF-CMB			X				
Patch Cord Cable Managers	0RU Flush-Mount Enclosure Panel Patch Cord Managers, bag of 2	5RCMT-VFG	X	X	X	X	X	X	
	1RU Enclosure and Panel Patch Cord Management Tray	5R1UX-CMT	X*		X*			X	
	2RU Enclosure and Panel Patch Cord Management Tray	5R2UX-CMT	X*		X*			X	
	HDX Fiber Distribution Frame Cross-Frame Routing Kit	F3168-CFR		X					
Decks	HDX Fiber Distribution Frame 2RU Patch Deck, empty (includes front/rear cable management and cable clamp kit)	F3168-DCK		X					
	HDX Fiber Distribution Frame 2RU Splice Deck, empty (includes VELCRO® Brand ties, front/rear cable management, and cable clamp kit)	F3168-SPD		X					
Doors	HDX Fiber Distribution Frame Front Door Kit	F3168-FDR		X					
Blanks	2RU Blank Panel	F3168-BLK		X					

\* = Use with flat panel

## 3 Select Adapter Plates

		HDX fits HDX Frame and UHD Enclosures and Panels	e2XHD fits e2XHD panels	SDX fits 2000i, 1000i, and 500i Enclosures and Panels
LC	12-fiber, OM1 & OM2, quad LC (beige), phosphor bronze sleeve	5FUHD-2IL		
	12-fiber, OM3 & OM4, quad LC (aqua), zirconia ceramic sleeve	5FUHD-2QL		
	12-fiber, OS2, quad LC (blue), zirconia ceramic sleeve	5FUHD-2LL		
	12-fiber, OS2, quad LC/APC (green), zirconia ceramic sleeve	5FUHD-2VL		
	12-fiber, OM1, duplex LC, 62.5 µm (beige), zirconia ceramic sleeve			5F100-2IL
	12-fiber, OM2, duplex LC, 50 µm (black), zirconia ceramic sleeve			5F100-2EL
	12-fiber, OM3 & OM4, duplex LC, 50 µm (aqua), zirconia ceramic sleeve		E2XLC-AQU	5F100-2QL
	12-fiber, OS2, duplex LC (blue), zirconia ceramic sleeve		E2XLC-BLU	5F100-2LL
	12-fiber, OS2, duplex LC/APC (green), zirconia ceramic sleeve			5F100-2VL
	24-fiber, OM1, quad LC, 62.5 µm (beige), zirconia ceramic sleeve			5F100-4IL
	24-fiber, OM2, quad LC, 50 µm (black), zirconia ceramic sleeve			5F100-4EL
	24-fiber, OM3 & OM4, quad LC, 50 µm (aqua), zirconia ceramic sleeve			5F100-4QL
	24-fiber, OS2, quad LC (blue), zirconia ceramic sleeve			5F100-4LL

Additional configurations available. Contact inside sales at 800.722.2082.

continued...

## 3 Select Adapter Plates (continued)

		HDX <sup>^</sup> fits HDX Frame and UHDX Enclosures and Panels	e2XHD fits e2XHD panels	SDX fits 2000i, 1000i, and 500i Enclosures and Panels
SC	6-fiber, OM1 & OM2, duplex SC (beige), phosphor bronze sleeve	5FUHD-6IC		
	6-fiber, OM3 & OM4, duplex SC (aqua), zirconia ceramic sleeve	5FUHD-6QC		
	6-fiber, OS2, duplex SC (blue), zirconia ceramic sleeve	5FUHD-6LC		
	6-fiber, OM1, duplex SC, 62.5 μm MM (beige), zirconia ceramic sleeve			5F100-6IC
	6-fiber, OM2, duplex SC, 50 μm MM (black), zirconia ceramic sleeve			5F100-6EC
	6-fiber, OM3 & OM4, duplex SC, 50 μm MM (aqua), zirconia ceramic sleeve			5F100-6QC
	6-fiber, OS2, duplex SC, SM (blue), zirconia ceramic sleeve			5F100-6LC
	6-fiber, OS2, duplex SC/APC, SM (green), zirconia ceramic sleeve			5F100-6VC
	12-fiber, OM1, duplex SC, 62.5 μm MM (beige), zirconia ceramic sleeve			5F100-2IC
	12-fiber, OM2, duplex SC, 50 μm MM (black), zirconia ceramic sleeve			5F100-2EC
	12-fiber, OM3 & OM4, duplex SC, 50 μm LOMM (aqua), zirconia ceramic sleeve			5F100-2QC
	12-fiber, OS2, duplex SC, (blue), zirconia ceramic sleeve			5F100-2LC
	12-fiber, OS2, duplex SC/APC, (green), zirconia ceramic sleeve			5F100-2VC
	ST	6-fiber, ST, MM, SM, (black), zirconia ceramic sleeve		
8-fiber, ST, MM, SM, (black), zirconia ceramic sleeve				5F100-8MT
MTP®	4-Position MTP, key up/key-down		E2XHD-4MP	
	4-Position MTP, key-up/key-up		E2XHD-4MB	
	6-position MTP, key up/key up	5FUHD-6MB		5F100-6MB
	6-position MTP, key up/key down	5FUHD-6MP		5F100-6MP
	8-position MTP, key up/key down			5F100-8MP
	8-position MTP, key up/key up			5F100-8MB
Blanks	Blank	5FUHD-BLK		5F100-PLT
	6-pk QuickPort®, empty			5F100-6QP

Additional configurations available. Contact inside sales at 800.722.2082.

## OR Select MTP® Cassettes

	HDX <sup>^</sup> fits HDX Frame and UHDX Enclosures and Panels	e2XHD fits e2XHD panels	SDX fits 2000i, 1000i, and 500i Enclosures and Panels
MTP Cassette, 12-fiber MTP-LC, OM4	41LM1-xxN	FME2XHD-F012CKQD*	FM-F012CAC0*
MTP Cassette, 24-fiber 1x24F MTP-LC, OM4	42LM2-xxN	FME2XHD-F024CHQE*	FM-F024CDC0*
MTP Cassette, 24-fiber, 2x12F MTP - 3x8F MTP, OM4	42MM1-xxN	FME2XHD-F024MKKE*	FM-F024NCC0°
MTP Cassette, 24-fiber, 1x24F MTP - 3x8F MTP, OM4	42MM2-xxN	FME2XHD-F024MHKD*	FM-F024NDC0°
MTP Cassette, 48-fiber, 2x24F MTP - 6x8F MTP, OM4	44MM2-xxN		FM-F048NDC0°

OS2 and OM3 fiber types available, as well as additional configurations. Contact inside sales or visit [Leviton.com/configurator](http://Leviton.com/configurator).

xx = Polarity: AN = Method A, CN = Method C, BC = Method B (core), BE = Method B (edge)

\* = Polarity: A = Method A, C = Method C, BC = Method B (core), BE = Method B (edge)

Note: For Method B, each channel must have 1 core and 1 edge cassette.

\* = Polarity: BC = Method B (core), BE = Method B (edge)

## 4 Select Splice Trays / Modules



UHDx	HDX Frame	2000i SDX	1000i SDX	500i SDX	SDX Wall Mount
------	-----------	-----------	-----------	----------	----------------

Metal Splice Tray, Heat Shrink (plastic)		UHDx	HDX Frame	2000i SDX	1000i SDX	500i SDX	SDX Wall Mount
12-Fiber Mini, 4" x 7" x 0.35"	T47HS-P06			X	X	X	X
12-Fiber Mini, with standoff, 4" x 7" x 0.57"	5T000-00T			X	X	X	X
Precision-Molded Splice Trays, Heat Shrink (plastic)		UHDx	HDX Frame	2000i SDX	1000i SDX	500i SDX	SDX Wall Mount
12-Fiber Mini, 3.74" x 5.59" x 0.56" (14 heat shrink splice sleeves included)	T5PLS-12F			X	X	X	X
24-Fiber High-Density, 4.5" x 7.63" x 0.50" (26 heat shrink splice sleeves included)	T5PLS-24F			X	X	X	X
Ribbon Style Splice Tray, Heat Shrink (plastic)		UHDx	HDX Frame	2000i SDX	1000i SDX	500i SDX	SDX Wall Mount
72-Fiber Ribbon Style, quartz, 5" x 10" x 0.35"	T6XRB-40Q			X	X	X	X
SDX 12- & 24-Fiber Splice Modules		UHDx	HDX Frame	2000i SDX	1000i SDX	500i SDX	SDX Wall Mount
SDX 12-Fiber LC Splice Module	SPLCS-12x			X	X	X	X
SDX 24-Fiber LC Splice Module	SPLCS-24x			X	X	X	X
SDX 12-Fiber SC Splice Module	SPSCS-12x			X	X	X	X
HDX 12- & 36-Fiber Splice Modules ^		UHDx	HDX Frame	2000i SDX	1000i SDX	500i SDX	SDX Wall Mount
HDX 12-Fiber LC Splice Module	SPLCH-12 <sup>⌘</sup>	X	X				
HDX 36-Fiber MTP Splice Module (male)	SPMPH-##PN	X	X				
HDX 36-Fiber MTP Splice Module (female)	SPMPH-##UP	X	X				

x = OM3 (A), OM4 (4), OS2 (L), APC OS2 (V)  
 ⌘ = OM4 (A), OS2 (L), APC OS2 (V)

^ = Make to Order, lead times may apply  
 ## = OM4 (MM), OS2 (SM)

## 5 Select Connectors



	OM1 62.5/125µm Multimode	OM2 50/125µm Multimode	OM3 / OM4 50/125µm Laser Opt. Multimode	OS2 Single-Mode	OS2 APC Single-Mode
Fast-Cure® Anaerobic Adhesive					
LC (with 2 - 3 mm boot)	49990-ML2	49990-ML2	49990-LL2	49990-SL2	
LC (with 0.9 mm boot)	49990-MDL	49990-MDL	49990-LDL	49990-SDL	
SC	49990-MSC	49990-MSC	49990-LSC	49990-SSC	
ST	49990-MST	49990-MST		49990-SST	
FastCAM® Pre-Polished					
LC*	49991-MLC	49991-5LC	49991-LLC	49991-SLC	
SC*	49991-MSC	49991-5SC	49991-LSC	49991-SSC	49991-ASC**
ST*	49991-MST	49991-5ST		49991-SST	

\*\* = Termination of angled pre-polished connectors requires a precision angled cleaver  
 \* = Termination of pre-polished connectors requires a precision cleaver

Today's networks must be fast and reliable, with the flexibility to handle ever-increasing data demands. Leviton can help expand your network possibilities and prepare you for the future. Our end-to-end cabling systems feature robust construction that reduces downtime, and performance that exceeds standards. We offer quick-ship make-to-order solutions from our US and UK factories. We even invent new products for customers when the product they need is not available. All of this adds up to the **highest return on infrastructure investment.**

**NETWORK SOLUTIONS DIVISION HEADQUARTERS**

2222 - 222nd Street S.E., Bothell, WA 98021 USA | [leviton.com/ns](http://leviton.com/ns)

**Inside Sales** ..... (800) 722 2082 ..... [insidesales@leviton.com](mailto:insidesales@leviton.com)  
**International Inside Sales** ..... +1 (425) 486 2222 ..... [intl@leviton.com](mailto:intl@leviton.com)  
**Technical Support** ..... (800) 824 3005 / +1 (425) 486 2222 ..... [appeng@leviton.com](mailto:appeng@leviton.com)

**NETWORK SOLUTIONS EUROPEAN HEADQUARTERS (BRAND-REX LTD.)**

Viewfield Industrial Estate, Glenrothes, Fife KY6 2RS, UK | [leviton.com/ns/emea](http://leviton.com/ns/emea)  
 Brand-Rex Limited is a subsidiary of Leviton Mfg. Co., Inc

**Customer Service** ..... +44 (0) 1592 772124 ..... [customerserviceeu@leviton.com](mailto:customerserviceeu@leviton.com)  
**Technical Support** ..... +44 (0) 1592 778494 ..... [appeng.eu@leviton.com](mailto:appeng.eu@leviton.com)

**NETWORK SOLUTIONS MIDDLE EAST HEADQUARTERS**

Bay Square, Building 3, Office 205, Business Bay, Dubai - UAE | [leviton.com/ns/middleeast](http://leviton.com/ns/middleeast)

**Customer Service** ..... +971 (4) 247 9800 ..... [lmeinfo@leviton.com](mailto:lmeinfo@leviton.com)

**CORPORATE HEADQUARTERS**

201 N. Service Road, Melville, NY 11747 USA | [leviton.com](http://leviton.com)

**Customer Service** ..... (800) 323 8920 / +1 (631) 812 6000 ..... [customerservice@leviton.com](mailto:customerservice@leviton.com)

**ADDITIONAL OFFICES**

**Africa** ..... +971 (4) 247 9800 ..... [lmeinfo@leviton.com](mailto:lmeinfo@leviton.com)  
**Asia / Pacific** ..... +1 (631) 812 6228 ..... [infoasean@leviton.com](mailto:infoasean@leviton.com)  
**Canada** ..... +1 (514) 954 1840 ..... [pcservice@leviton.com](mailto:pcservice@leviton.com)  
**Caribbean** ..... +1 (954) 593 1896 ..... [infocaribbean@leviton.com](mailto:infocaribbean@leviton.com)  
**China** ..... +852 2774 9876 ..... [infochina@leviton.com](mailto:infochina@leviton.com)  
**Colombia** ..... +57 (1) 743 6045 ..... [infocolombia@leviton.com](mailto:infocolombia@leviton.com)  
**Latin America & Mexico** ..... +52 (55) 5082 1040 ..... [lsamarketing@leviton.com](mailto:lsamarketing@leviton.com)  
**South Korea** ..... +82 (2) 3273 9963 ..... [infokorea@leviton.com](mailto:infokorea@leviton.com)

**ALL OTHER INTERNATIONAL INQUIRIES** ..... [international@leviton.com](mailto:international@leviton.com)

