



Pro-face 30th
GP Series ANNIVERSARY

2020 Catalog



by Schneider Electric



HMI and Industrial PC Solutions

Contact Information	4
Custom Overlays	5

SOFTWARE

GP-Pro Ex	6
Pro-Server Ex	7
Remote HMI	8
Remote HMI Client for Windows	9
Pro-face Connect	10
BLUE Open Studio	11
BLUE	12-13

HMI

Standard

GP4000 Standard	14-22
GP4000 Rear Mount	23-27
GP4000 VM	28-31
GP4G01 IoT Gateway	32
GP4000 Modular	33-35
GP4100 Compact	36-37

Hand Held

GP4000H Graphical Pendant Station	38-39
---	-------

Control

LT4000M	40-43
---------------	-------

EZ Series

Overview	44
Illuminated Switch	45
Numpad	46
Tower Light	47
LAN Adapter	48

ENHANCED HMI

SP5000

Overview	49
Premium Display	50-51
Advanced Display	52-53
Open Box	54
Power Box	55
Standard Box	56
Multi-Converter Box	57
Multi-Display Adapter	58
Control Modules	59

EXTREME HMI

SP5000X

Overview	60
Display	61
Box	62

BASIC WEB HMI

STW6000

Display	63-65
---------------	-------

BASIC HMI

ST6000

Display	66-68
---------------	-------

IPC

Panel PC

RC6000	78
PS5000	79-84

Flat Panel Display

FP5000	85-86
--------------	-------

ACCESSORIES

HMI and EZ Series

Accessories	69-77
-------------------	-------

IPC

Accessories	87-88
-------------------	-------

Contact Information



Customer Service & Tech Support

Pro-face is committed to delivering excellent technical support whether you are local or abroad—free, real time solutions. Our technical support website is a vast resource of product and application knowledge designed to help you maximize the value of your Pro-face HMI with services aimed at reducing development man-hours by offering FAQ, Driver Downloads, Manual Downloads, Application Notes, and much more.

Customer Service / Inside Sales

Phone: 800-289-9266 (option 1)

Leadtime: leadtime@profaceamerica.com

Customer Care: customercare@profaceamerica.com

Application Technical Support

Phone: 800-289-9266 (option 2)

Support: support@profaceamerica.com



Repair Services

Pro-face has eliminated loss throughout the entire process by providing free quotes for repair and return delivery. We are constantly re-evaluating our systems to ensure satisfaction for all of our customers. Should your HMI or iPC need repair or refurbishment, Pro-face America has the fastest turn around repair service in the industry with an average of just five days.

Phone: 734-477-0613

Repair (RMA): rmasupport@profaceamerica.com



Customization

Pro-face America has a Product Modification Department that is unequalled in the industry. We can tailor our products to meet the individual needs of your organization. Whether it's custom overlays, pre-loaded software, non-standard hardware, custom recovery media and/or kitting/bundling options for your HMI or iPC, we do it all in our state-of-the-art facility in Ann Arbor, Michigan.

Website: profaceamerica.com/prodmod

Product Modifications: prodmod@profaceamerica.com



General Contact Information

Pro-face America

1050 Highland Drive, Suite D

Ann Arbor, MI 48108

profaceamerica.com

Phone: 734-477-0600

Phone: 800-289-9266 (toll free)

Fax: 734-864-7347

Web: webmaster@profaceamerica.com

Marketing: marcom@profaceamerica.com

Media Relations: marcom@profaceamerica.com

Accounting: accounting@profaceamerica.com

HMI Store: customercare@profaceamerica.com

CUSTOM OVERLAYS

HMIoverlays.com

- ✓ Rapid Delivery
- ✓ Quantity Based Pricing
- ✓ No Minimum Quantities
- ✓ Easy & Quick Process



Would you like to highlight your brand and differentiate your machine through a custom HMI overlay? You can now purchase custom overlays for your Pro-face HMIs.

HMI Screen Editor & Logic Programming Software

GP-Pro EX +

Create Your HMI Application in Minutes



GP-Pro EX is the easy-to-use development software for Pro-face HMI and IPC units. With a wide array of application development tools, expanded diagnostic features and simulation capabilities, GP-Pro EX is capable of handling the most demanding HMI applications.

Set up communications

- Choose and set up PLC and third-party devices effortlessly
- System settings are logically arranged and easy to find

Design application/screens

- Drag-and-drop addressing, parts and colors
- Efficient features to reduce development time
- Create consistent look and feel using the user-defined templates

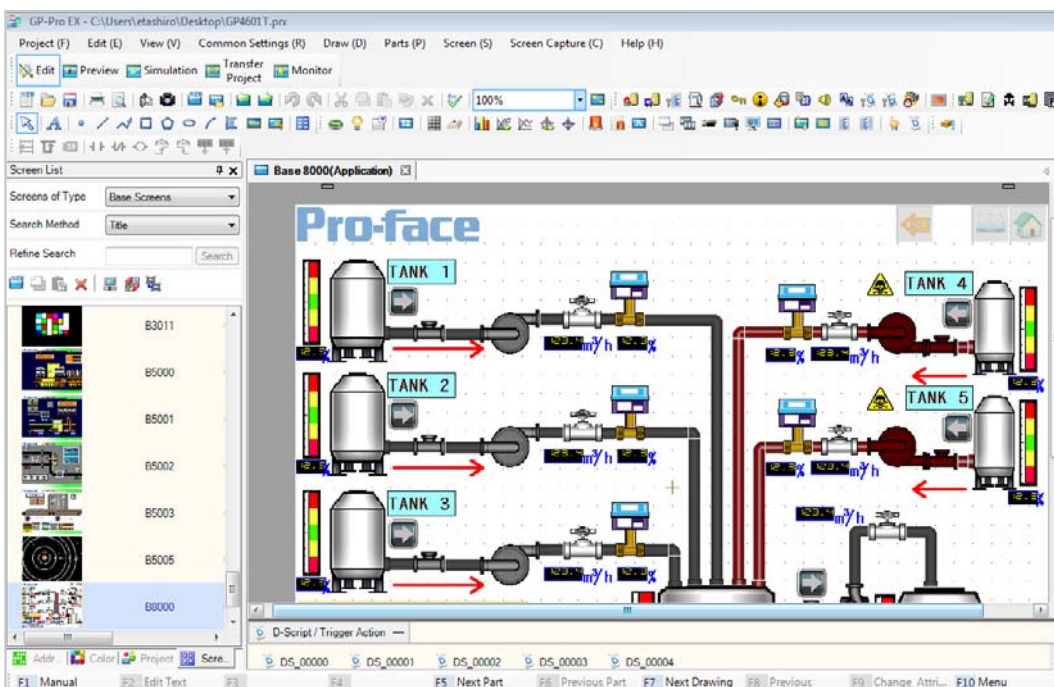
Simulate and test

- Verify before you travel
- Debug your application without hardware
- Test without downloading

Download/transfer

- Tamper-proof HMI application – password-protected project source

One development software for both dedicated and open windows-based operator interfaces.



View over 40 GP-Pro EX technical videos on YouTube.

GP-Pro EX Playlist

Download the Pro-face Software Guide on iTunes or Google Play.



Data management software

Pro-Server EX⁺

Enterprise-wide data collecting, sharing, connectivity solution ▶

- Applications
- Collect and Manage Data
- Connectivity Support



Control Room

Plant Floor



Pro-face open-platform HMI



Application software for sharing user-defined factory-floor data throughout the corporate enterprise

+ GP-Viewer

- ▶ Monitor and Control Multiple Operator Interfaces from a Single Remote PC.

+ Camera Viewer

- ▶ Record, Display and Playback Live Video of Industrial Operations on a Remote PC.

+ Pass Through

- Programming and monitoring PLC via operator interface.

+ Remote PC Access

- Harness the power of a PC from your dedicated HMI.

+ Memory Loader

- Field maintenance and backup with data protection.

+ Transfer Tool

- Easy machine maintenance and data log retrieval.

+ WebServer

- View HMI information and alerts through a web browser.

+ Remote HMI

- ▶ Monitor & control HMI screens from a smart phone or tablet (data input, send work instruction, etc.).

+ WinGP

- ▶ Runtime software for GP-Pro EX created applications.

+ FTP Server

- Upload and download data files to the operator interface over the internet.

Pro-face Remote HMI +

Download Pro-face Remote HMI today!



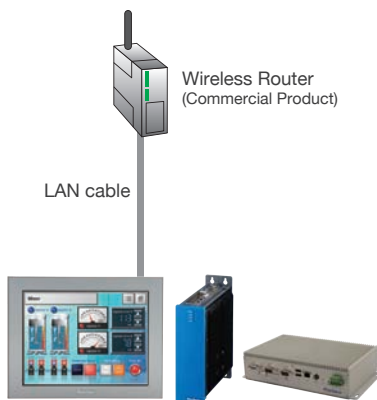
Pro-face Remote HMI allows you to check machines and equipment for alarms, operating status, and other information using a tablet or smartphone from anywhere on the factory floor.

Quick steps to use Pro-face Remote HMI

STEP1

Hardware Preparation

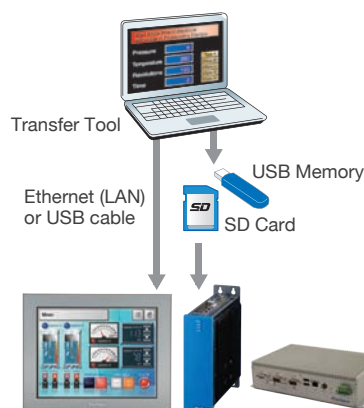
Prepare Wireless Router and connect to HMI.



STEP2

Transfer Project File

Adjust application in GP-Pro EX and transfer it to HMI.



STEP3

Install Remote HMI on a tablet or smartphone

Download and install Pro-face Remote HMI on a tablet or smartphone. Search HMI and connect to monitor the HMI screen.



***Remote HMI Server license is required separately to monitor IPC and PC.**

Pro-face Remote HMI client for Windows +



Features

Multi-Monitor Mode

Up to 6 screens can be displayed in one PC screen.

Full Screen Mode

The windows of the PC screen can be resized to the PC screen max. size.

Multi-client Function

For checking the status of equipment from different points of view, multiple PCs can be operated simultaneously.

Synchronous and Asynchronous Operation Mode

Pro-face Remote HMI Client for Win supports synchronous and asynchronous operation modes which switch during operation. A new parameter in the GP-Pro EX setting provides the option to limit the operation modes for the Pro-face Remote HMI Client for Windows.

Alarm Monitor Function

Indicating the status of each HMI in the overview reduces the time for identifying the faulty system and further reduces the downtime and associated costs. Besides the status bar for each HMI, any alarm can also trigger an alarm sound.

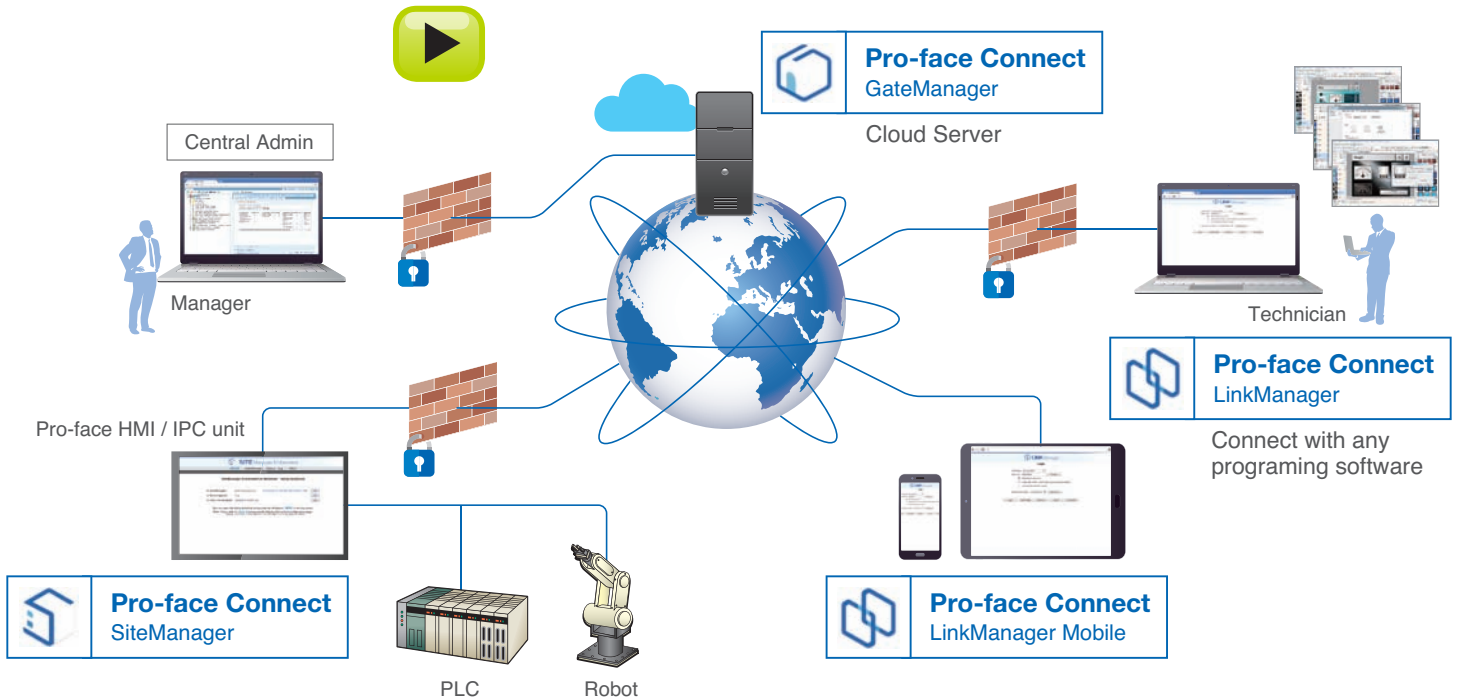
Download Trial!



Pro-face Connect

Secure Remote Access over Internet +

Pro-face Connect is a ready to use embedded HMI service to access machines remotely and securely.



Request a **FREE TRIAL**
of Pro-face Connect today!

LEARN MORE

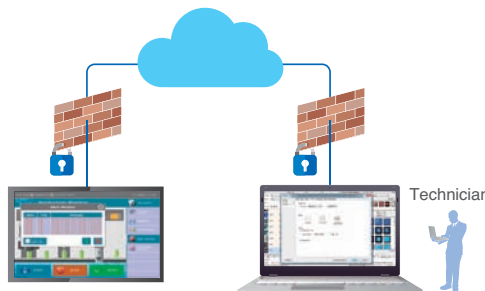
Efficient and easy to use

- Remote access for programming, diagnostics, control, and monitoring
- Speeds up operations and reduces machine downtime



Works everywhere, for everyone

- Operable for all application and segments
- Available from a desktop PC, laptop, or tablet



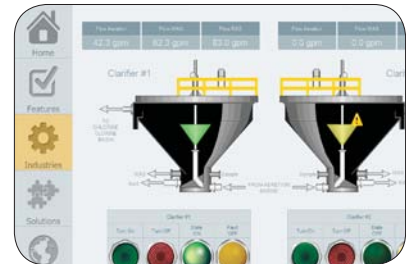
Reliable and Safe

- Cybersecure (end to end) for both original equipment manufacturers and end users
- Secure access to remote devices over the internet



BLUE Line Management Lite SCADA Open Studio

SCADA/HMI Software for Intuitive Dashboards, OEE, and the Internet of Things.



SP5000 and PS5000 Bundled

Available to be bundled with SP5000 HMIs and all Pro-face PS5000 Series Industrial PCs

Support for Multiple Document Interface on Studio Mobile Access (SMA)

Access your graphical interface from any device, with groups of screens, popups, and dialogs

Expanded OPC Communication

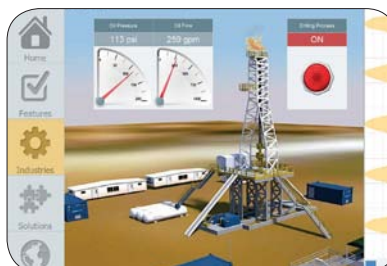
Supports OPC DA (client), OPC XML/DA (client), OPC .NET (client), OPC UA (client & server), and native redundancy.

Built-in Tag Integration with PLCs

Comprehensive tag integration with PLCs from Schneider and other manufacturers

Library of Symbols

Expanded and improved set of symbols for HMI/SCADA applications





BLUE HMI Design Software



Many device drivers available

Connect to control devices around the world. Select the driver that meets your needs.



Rich and expressive interfaces with intuitive operation

Anyone can reach easily understandable information.



Reduce time required to create screens with new design methods.

Create and customize screens efficiently

VERSATILITY



Effectively use machine information.

Make the best of machine information and communicate smoothly with management systems.

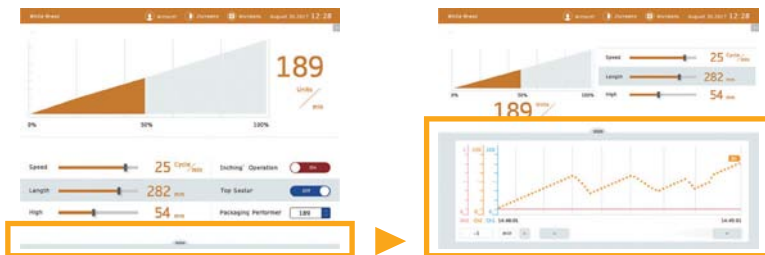




Visualization Operation

Responsive design

Zoom out to focus on important information, zoom in for detailed information.



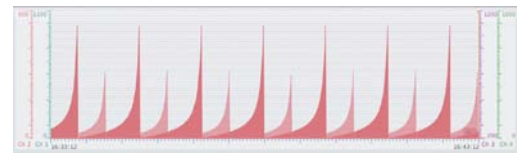
Just one step to show detailed information

Access information with fewer clicks



Easily identify patterns with highly flexible graph features

Using various features, including comparisons graphs, can be more expressive than ever before.



Compare with past data with just one touch.
(Multi-scale, Split mode, Rectangle graph, Block trend)

Smooth display with anti-aliasing even when zoomed

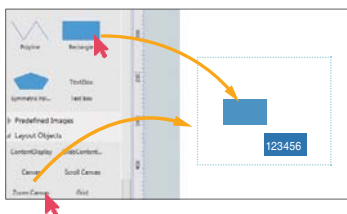
Zoom A → A Zoom ○ → ○



Drawing

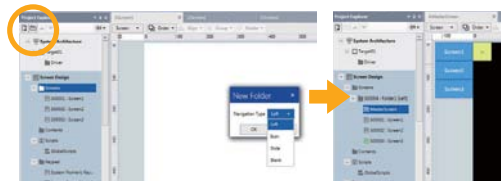
Easily create gesture screens

Just drag and drop the target objects on screens.



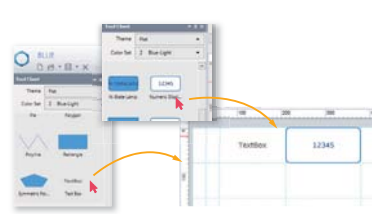
Set navigation easily

With the navigation feature, you don't need to create screen change switches.

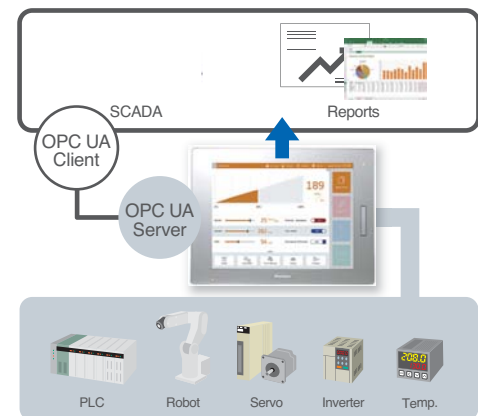


Reduce time for layout changes

Use grid cell editing to automatically adjust an object's size and location during layout changes.



Data Access & Connectivity



Connect to up to 10 drivers at the same time

*GP4000:4, ST6000 GP4100 color model: 2

Model#	Descriptions	Model#	Description
PFXBLCZLSPM**	BLUE Professional (DVD)	PFXBLECZLSPM**	BLUE Basic (DVD) *For only ST6000 Series / GP4100 Series Color Model
PFXBLCZLSPM**	BLUE Professional Group License (3Licenses / License key code)	PFXBLCZLSRA**	BLUE Professional Fixed Term License (1License / License key code)
PFXBLCZLTPM**	BLUE Professional Team License (10Licenses / License key code)	PFXBLCZLSPM**	BLUE Runtime *For Windows PC

Supported Model

- SP5000
- ST6000
- GP4100 Color model
- Pro-face IPC, PC/AT

Some models are not supported.
For more details, please see BLUE website.

GP4000 Standard



Description

Best in Class Connectivity, Powerful HMI Functionality and Full Compatibility with legacy Pro-face GP-Pro EX and GP3000 products. GP4000 HMI drivers allow you to “talk to” your preferred PLC, vision system, motion controller, temperature controller, inverter, bar code reader, and actuator.

Easy to Use: Operators can easily monitor conditions and the operating environment in real time using realistic 3D buttons, lamps, and gauges.

Saves Energy: Reduces on-site power consumption in a variety of ways including an on-board LED backlight in all models, and a dimmer setting used to decrease and eventually stand-by the display after being idle for a set period of time.

Quick On-site Recovery: Simply touch the alarm message to check the relevant data in chronological sequence.

Remote Monitoring: GP-Viewer EX software provides various remote monitoring functions, such as checking the screen of the GP located on a production site from a remote office.

Features

- 65,536 Colors, Clear, Bright, High-Resolution TFT Display
- Energy Efficient LED Display
- No Grid Analog Touch Panel for Improved Visibility and Precise Part Placement
- Supports Up to Two Protocol Drivers Simultaneously
- High Speed Application Transfer, 10 Times Faster than Conventional Operator Interfaces
- 10/100 Base-T Ethernet, USB, and Serial Communication Interfaces
- High-Definition Part Images and Multi-Language Support
- Custom Overlays available
- Remote HMI compatibility (tablet/phone)

3.5" Standard – GP4000

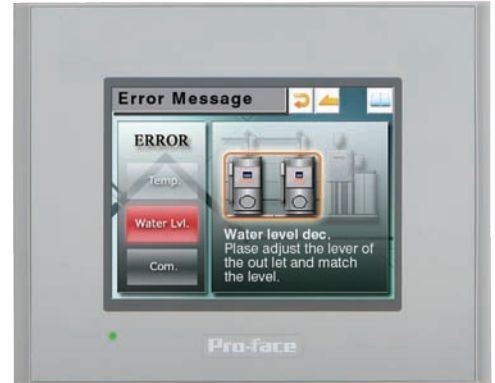
Analog Touchscreen Operator Interface
with USB and Serial Communication Ports

General Specifications

Graphic Display Resolution	320 x 240 pixels (QVGA)
Display Type and Size	TFT Color LCD (3.5")
Display Colors	65,536 Colors (no blink) / 16,384 Colors (blink)
Display Area	W 70.56 x H 52.92 mm [W 2.78 x H 2.08 in]
Touch Screen	Resistive Film (analog)
Backlight	White LED
Storage Temperature	-20 to 60° C [-4 to 140° F]
Environmental Ratings	IP65f, NEMA #250 Type 4x/13
Certifications	CCE, CSA, UL Listed C1D2, RoHS, ABS, DNV, ATEX

3D
CAD

360



Product Specifications

Part Number to Order	PFXGP4201TADW	PFXGP4201TAD	PFXGP4203TAD
SD Card	No	No	No
Serial Ports (COM1)	RS-232C	RS-232C / 422 / 485	RS-485 (isolation)
Serial Ports (COM2)	RS-422/485	n/a	n/a
Ethernet	n/a	x1	x1
USB (1)	Type-A (2.0)	Type-A (2.0)	Type-A (2.0)
USB (2)	Mini-B (2.0)	Mini-B (2.0)	Mini-B (2.0)
Brightness / Contrast	8 levels of adjustment	16 levels of adjustment	16 levels of adjustment
Programming Memory	8mb Flash EPROM	16mb Flash EPROM	16mb Flash EPROM
Backup Memory	128kb SRAM w/ battery backup	320kb SRAM w/ battery backup	320kb SRAM w/ battery backup
Ambient Operating Temp	0 to 50° C [32 to 122° F]	0 to 50° C [32 to 122° F]	0 to 50° C [32 to 122° F]
Input Voltage	24 VDC	24 VDC	24 VDC
Power Consumption	9.6 W or less	9.6 W or less	9.6 W or less

5.7" Standard – GP4000

Analog Touchscreen Operator Interface
with USB and Serial Communication Ports

General Specifications

Graphic Display Resolution	320 x 240 pixels (QVGA)
Display Type and Size	TFT Color LCD (5.7")
Display Colors	65,536 Colors (no blink) / 16, 384 Colors (blink)
Display Area	W 115.2 x H 86.4 mm [W 4.54 x H 3.4 in]
Touch Screen	Resistive Film (analog)
Backlight	White LED
Storage Temperature	-20 to 60° C [-4 to 140° F]
Environmental Ratings	IP65f, NEMA #250 Type 4x/13
Certifications	CE, CSA, UL Listed C1D2, RoHS, ABS, DNV, ATEX

3D
CAD

360



Product Specifications

Part Number to Order	PFXGP4301TADW PFXGP4301TADWC*	PFXGP4301TAD PFXGP4301TADC*	PFXGP4303TAD
SD Card	No	x1	x1
Serial Ports (COM1)	RS-232C	RS-232C	RS-232C
Serial Ports (COM2)	RS-422 / 485	RS-422 / 485	RS-485 (isolation)
Ethernet	x1	x1	x1
USB (1)	Type-A (2.0)	Type-A (2.0)	Type-A (2.0)
USB (2)	Mini-B (2.0)	Mini-B (2.0)	Mini-B (2.0)
Brightness / Contrast	8 levels of adjustment	16 levels of adjustment	16 levels of adjustment
Programming Memory	8mb Flash EPROM	16mb Flash EPROM	16mb Flash EPROM
Backup Memory	128kb SRAM w/ battery backup	320kb SRAM w/ battery backup	320kb SRAM w/ battery backup
Ambient Operating Temp	0-50° C [32 to 122° F]	0-55° C [32 to 131° F]	0-55° C [32 to 131° F]
Input Voltage	24 VDC	24 VDC	24 VDC
Power Consumption	10.5 W or less	10.5 W or less	10.5 W or less

* C suffix denotes product is conformal coated

7.0" Standard (wide) – GP4000

Analog Touchscreen Operator Interface with USB and Serial Communication Ports

General Specifications

Graphic Display Resolution	800 x 480 pixels (WVGA)
Display Type and Size	TFT Color LCD (7.0" Widescreen)
Display Colors	65,536 Colors (no blink) / 16, 384 Colors (blink)
Display Area	W 152.4 x H 91.44 mm [W 6.0 x H 3.6 in]
Touchscreen	Resistive Film (analog)
Backlight	White LED
Storage Temperature	-20 to 60° C [-4 to 140° F]
Environmental Ratings	IP65f, NEMA #250 Type 4x/13
Certifications	CE, CSA, UL Listed C1D2, RoHS, ABS, DNV, ATEX

3D
CAD

360



Product Specifications

Part Number to Order	PFXGP4401WADW
SD Card	x1
Serial Ports (COM1)	RS-232C
Serial Ports (COM2)	RS-422 / 485
Ethernet	x1
USB (1)	Type-A (2.0)
USB (2)	Mini-B (2.0)
Brightness / Contrast	8 levels of adjustment
Programming Memory	16mb Flash EPROM
Backup Memory	128kb SRAM with battery backup
Ambient Operating Temp	0-50° C [32 to 122° F]
Input Voltage	24 VDC
Power Consumption	12W or less

7.5" Standard – GP4000

Analog Touchscreen Operator Interface
with USB and Serial Communication Ports

General Specifications

Graphic Display Resolution	640 x 480 pixels (VGA)
Display Type and Size	TFT Color LCD (7.5")
Display Colors	65,536 Colors (no blink) / 16, 384 Colors (blink)
Display Area	W 153.7 x H 115.8 mm [W 6.05 x H 4.56 in]
Touchscreen	Resistive Film (analog)
Backlight	White LED
Storage Temperature	-20 to 60° C [-4 to 140° F]
Environmental Ratings	IP65f, NEMA Type 4x/13
Certifications	CE, CSA, UL Listed C1D2, RoHS, ABS, DNV, ATEX

3D
CAD

360



Product Specifications

Part Number to Order	PFXGP4401TAD
SD Card	x1
Serial Ports (COM1)	RS-232C
Serial Ports (COM2)	RS-422 / 485
Ethernet	x1
USB (1)	Type-A (2.0)
USB (2)	Mini-B (2.0)
Brightness / Contrast	16 levels of adjustment
Programming Memory	32mb Flash EPROM
Backup Memory	320kb SRAM with battery backup
Ambient Operating Temp	0-55° C [32 to 131° F]
Input Voltage	24 VDC
Power Consumption	12W or less

10.4" Standard – GP4000

Analog Touchscreen Operator Interface with
USB and Serial Communication Ports

General Specifications

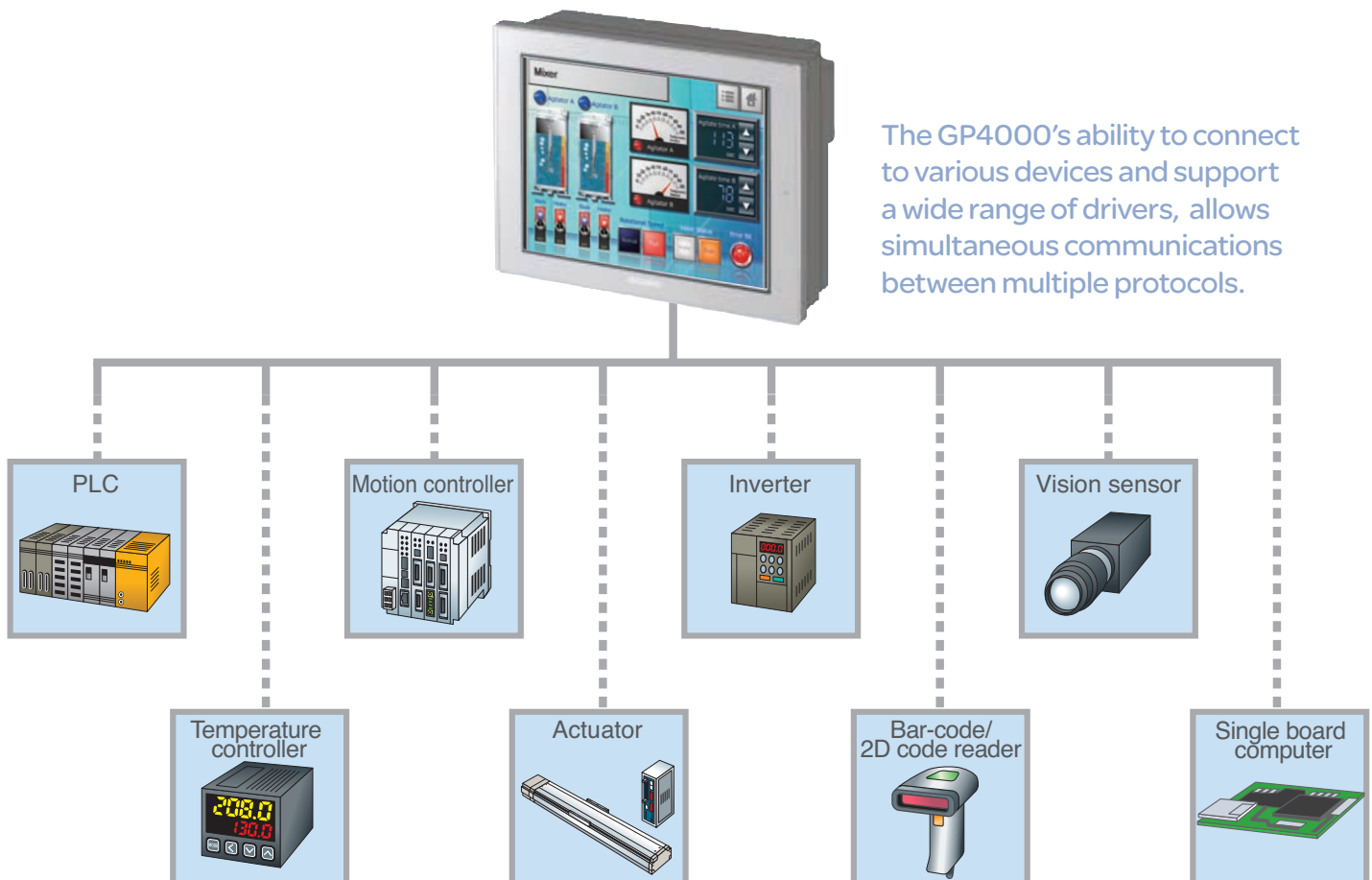
Graphic Display Resolution	640 x 480 pixels (VGA)
Display Type and Size	TFT Color LCD (10.4")
Display Colors	65,536 Colors (No blink) / 16, 384 Colors (blink)
Display Area	W 211.2 x H 158.4 mm [W 8.31 x H 6.24 in]
Backlight	White LED
Storage Temperature	-20 to 60° C [-4 to 140°F]
Environmental Ratings	IP65f, NEMA #250 Type 4x/13
Certifications	CE, CSA, UL Listed C1D2, RoHS, ABS, DNV, ATEX

3D
CAD

360



The GP4000's ability to connect to various devices and support a wide range of drivers, allows simultaneous communications between multiple protocols.



10.4" Standard – GP4000

Analog Touchscreen Operator Interface
with USB and Serial Communication Ports

Product Specifications

Part Number to Order	PFXGP4501TAA PFXGP4501TAAC*	PFXGP4501TAD PFXGP4501TADC*	PFXGP4501TMD
SD Card	x1	x1	x1
Serial Ports (COM1)	RS-232C	RS-232C	RS-232C
Serial Ports (COM2)	RS-422 / 485	RS-422 / 485	RS-422 / 485
Ethernet	x1	x1	x1
USB (1)	Type-A (2.0)	Type-A (2.0)	Type-A (2.0)
USB (2)	Mini-B (2.0)	Mini-B (2.0)	Mini-B (2.0)
Touch Screen	Resistive Film (analog)	Resistive Film (analog)	Resistive Film (matrix)
Brightness / Contrast	16 levels of adjustment	16 levels of adjustment	16 levels of adjustment
Programming Memory	32mb Flash EPROM	32mb Flash EPROM	32mb Flash EPROM
Backup Memory	320kb SRAM w/ battery backup	320kb SRAM w/ battery backup	320kb SRAM w/ battery backup
Input Voltage	100-240 VAC	24 VDC	24 VDC
Ambient Operating Temp	0-55° C [32 to 131° F]	0-55° C [32 to 131° F]	0-55° C [32 to 131° F]
Power Consumption	100 Vac: <44VA 240 Vac: <58VA	17W or less	17W or less

* C suffix denotes product is conformal coated

Part Number to Order	PFXGP4501TMA	PFXGP4501TADW	PFXGP4503TAD
SD Card	x1	x1	x1
Serial Ports (COM1)	RS-232C	RS-232C	RS-232C
Serial Ports (COM2)	RS-422 / 485	RS-422 / 485	RS-422 / 485 (isolation)
Ethernet	x1	x1	x1
USB (1)	Type-A (2.0)	Type-A (2.0)	Type-A (2.0)
USB (2)	Mini-B (2.0)	Mini-B (2.0)	Mini-B (2.0)
Touch Screen	Resistive Film (matrix)	Resistive Film (matrix)	Resistive Film (analog)
Brightness / Contrast Controls	16 levels of adjustment	8 levels of adjustment	16 levels of adjustment
Programming Memory	32mb Flash EPROM	16mb Flash EPROM	32mb Flash EPROM
Backup Memory	320kb SRAM w/ battery backup	128kb SRAM w/ battery backup	320kb SRAM w/ battery backup
Input Voltage	100-240 VAC	24 VDC	24 VDC
Ambient Operating Temperature	0-55° C [32 to 131° F]	0-50° C [32 to 122° F]	0-55° C [32 to 131° F]
Power Consumption	100 Vac: <44VA 240 Vac: <58VA	17W or less	17W or less

12.1" Standard – GP4000

Analog Touchscreen Operator Interface
with USB and Serial Communication Ports

General Specifications

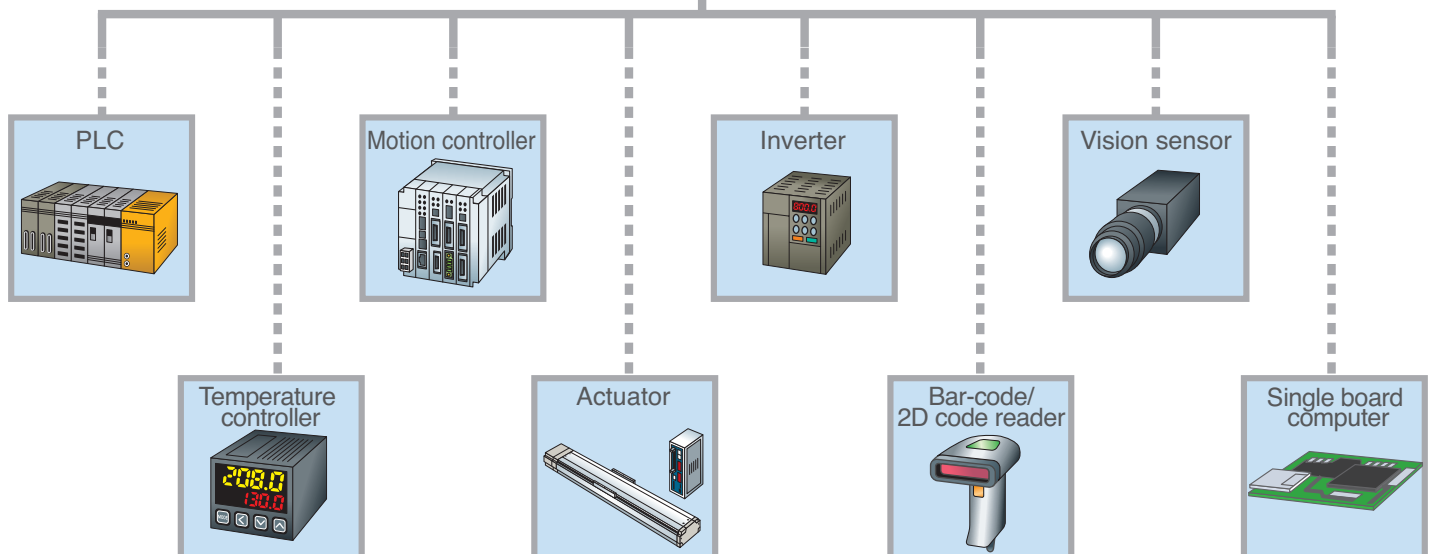
Graphic Display Resolution	800 x 600 pixels (SVGA)
Display Type and Size	TFT Color LCD (12.1")
Display Colors	65,536 Colors (no blink) / 16, 384 Colors (blink)
Display Area	W 246.0 x H 184.5 mm [W 9.69 x H 7.26 in]
Backlight	White LED
Storage Temperature	-20 to 60° C [-4 to 140° F]
Environmental Ratings	IP65f, NEMA #250 Type 4x/13
Certifications	CE, CSA, UL Listed C1D2, RoHS, ABS, DNV, ATEX

3D
CAD

360



The GP4000's ability to connect to various devices and support a wide range of drivers, allows simultaneous communications between multiple protocols.



12.1" Standard – GP4000

Analog Touchscreen Operator Interface
with USB and Serial Communication Ports

Product Specifications

Part Number to Order	PFXGP4601TAA PFXGP4601TAAC*	PFXGP4601TAD PFXGP4601TADC*	PFXGP4603TAD
SD Card	x1	x1	x1
Serial Ports (COM1)	RS-232C	RS-232C	RS-232C
Serial Ports (COM2)	RS-422 / 485	RS-422 / 485	RS-485 (isolation)
Ethernet	x1	x1	x1
USB (1)	Type-A (2.0)	Type-A (2.0)	Type-A (2.0)
USB (2)	Mini-B (2.0)	Mini-B (2.0)	Mini-B (2.0)
Touch Screen	Resistive Film (analog)	Resistive Film (analog)	Resistive Film (analog)
Brightness / Contrast	16 levels of adjustment	16 levels of adjustment	16 levels of adjustment
Programming Memory	32mb Flash EPROM	32mb Flash EPROM	32mb Flash EPROM
Backup Memory	320kb SRAM w/ battery backup	320kb SRAM w/ battery backup	320kb SRAM w/ battery backup
Input Voltage	100-240 VAC	24 VDC	24 VDC
Ambient Operating Temp	0-55° C [32 to 131° F]	0-55° C [32 to 131° F]	0-55° C [32 to 131° F]
Power Consumption	100 Vac: <44VA 240 Vac: <58VA	17W or less	17W or less

* C suffix denotes product is conformal coated

Part Number to Order	PFXGP4601TMD	PFXGP4601TMA
SD Card	x1	x1
Serial Ports (COM1)	RS-232C	RS-232C
Serial Ports (COM2)	RS-422 / 485	RS-422 / 485
Ethernet	x1	x1
USB (1)	Type-A (2.0)	Type-A (2.0)
USB (2)	Mini-B (2.0)	Mini-B (2.0)
Touch Screen	Resistive Film (matrix)	Resistive Film (matrix)
Brightness / Contrast	16 levels of adjustment	16 levels of adjustment
Programming Memory	32mb Flash EPROM	32mb Flash EPROM
Backup Memory	320kb SRAM with battery backup	320kb SRAM with battery backup
Ambient Operating Temp	0-55° C [32 to 131° F]	0-55° C [32 to 131° F]
Input Voltage	24 VDC	100-240 VAC
Power Consumption	17W or less	100 Vac: <44VA 240 Vac: <58VA

GP4000 Rear Mount



Description

The GP4000 Series Rear-Mount model is an HMI that can be mounted from the rear of an equipment control panel. Conventional programmable displays are typically designed to be mounted from the front, and have a bezel that projects past the front of the equipment control panel.

By offering a rear-mount model that can be mounted from the rear of an equipment control panel to meet the increasing need for design-conscious equipment in the industrial world, Pro-face is now able to provide a mounting method that matches industry needs in terms of equipment appearance and overall control panel design.

Using a rear-mount model also makes it possible to keep the control panel and display area flat. This has the benefit of preventing the accumulation of dust and mold, and even allows the display to be used in medical equipment and other devices used in environments where hygiene is important.

Features

- Equipment control panel and display area can be kept flat
- Available in four sizes: 12.1", 10.4", 7.5", and 5.7"
- Compliant with a variety of international standards
- Supports GP-Pro EX, screen editing and logic program software for the existing GP4000 series

5.7" Rear Mount – GP4000

Analog Touchscreen Operator Interface
with Multiple Rear Mounting Options

General Specifications

Graphic Display Resolution	320 x 240 pixels (QVGA)
Display Type and Size	TFT Color LCD (5.7")
Display Colors	65,536 Colors (no blink) / 16,384 Colors (blink)
Display Area	W 115.2 x H 86.4 mm (W 4.54 x H 3.4 in)
Touch Screen	Resistive Film (analog)
Backlight	White LED
Storage Temperature	-20 to 60° C [-4 to 140° F]
Environmental Ratings	IP20
Certifications	CE, CSA, UL Listed C1D2, RoHS, ABS, DNV, ATEX



Product Specifications

Part Number to Order	PFXGP4301TADR	PFXGP4301TADRF0C*
SD Card	x1	x1
Serial Ports (COM1)	RS-232C	RS-232C
Serial Ports (COM2)	RS-422/485	RS-422/485
Ethernet	x1	x1
USB (1)	Type-A (2.0)	Type-A (2.0)
USB (2)	Mini-B (2.0)	Mini-B (2.0)
Brightness / Contrast	16 levels of adjustment	16 levels of adjustment
Programming Memory	16mb Flash EPROM	16mb Flash EPROM
Backup Memory	320kb SRAM w/ battery backup	320kb SRAM w/ battery backup
Ambient Operating Temp	0 to 55° C [32 to 131° F]	0 to 55° C [32 to 131° F]
Input Voltage	24 VDC	24 VDC
Power Consumption	10.5 W or less	10.5 W or less

* Product is conformal coated

7.5" Rear Mount – GP4000

Analog Touchscreen Operator Interface
with Multiple Rear Mounting Options

General Specifications

Graphic Display Resolution	640 x 480 pixels (VGA)
Display Type and Size	TFT Color LC (7.5")
Display Colors	65,536 Colors (no blink) / 16,384 Colors (blink)
Display Area	W 153.7 x H 115.8 mm [W 6.05 x H 4.56 in]
Touch Screen	Resistive Film (analog)
Backlight	White LED
Storage Temperature	-20 to 60° C [-4 to 140° F]
Environmental Ratings	IP20
Certifications	CE, CSA, UL Listed C1D2, RoHS, ABS, DNV, ATEX



Product Specifications

Part Number to Order	PFXGP4401TADR	PFXGP4401TADRF0C*
SD Card	x1	x1
Serial Ports (COM1)	RS-232C	RS-232C
Serial Ports (COM2)	RS-422/485	RS-422/485
Ethernet	x1	x1
USB (1)	Type-A (2.0)	Type-A (2.0)
USB (2)	Mini-B (2.0)	Mini-B (2.0)
Brightness / Contrast	16 levels of adjustment	16 levels of adjustment
Programming Memory	32mb Flash EPROM	32mb Flash EPROM
Backup Memory	320kb SRAM w/ battery backup	320kb SRAM w/ battery backup
Ambient Operating Temp	0 to 55° C [32 to 131° F]	0 to 55° C [32 to 131° F]
Input Voltage	24 VDC	24 VDC
Power Consumption	12 W or less	12 W or less

* Product is conformal coated

10.4" Rear Mount – GP4000

Analog Touchscreen Operator Interface
with Multiple Rear Mounting Options

General Specifications

Graphic Display Resolution	640 x 480 pixels (VCA)
Display Type and Size	TFT Color LC (10.4")
Display Colors	65,536 Colors (no blink) / 16,384 Colors (blink)
Display Area	W 211.2 x H 158.4 mm [W 8.31 x H 6.24 in]
Touch Screen	Resistive Film (analog)
Backlight	White LED
Storage Temperature	-20 to 60° C [-4 to 140° F]
Environmental Ratings	IP20
Certifications	CE, CSA, UL Listed C1D2, RoHS, ABS, DNV, ATEX



Product Specifications

Part Number to Order	PFXGP4501TADR	PFXGP4501TADRF0C*
SD Card	x1	x1
Serial Ports (COM1)	RS-232C	RS-232C
Serial Ports (COM2)	RS-422/485	RS-422/485
Ethernet	x1	x1
USB (1)	Type-A (2.0)	Type-A (2.0)
USB (2)	Mini-B (2.0)	Mini-B (2.0)
Brightness / Contrast	16 levels of adjustment	16 levels of adjustment
Programming Memory	32mb Flash EPROM	32mb Flash EPROM
Backup Memory	320kb SRAM w/ battery backup	320kb SRAM w/ battery backup
Ambient Operating Temp	0 to 55° C [32 to 131° F]	0 to 55° C [32 to 131° F]
Input Voltage	24 VDC	24 VDC
Power Consumption	17 W or less	17 W or less

* Product is conformal coated

12.1" Rear Mount – GP4000

Analog Touchscreen Operator Interface
with Multiple Rear Mounting Options

General Specifications

Graphic Display Resolution	800 x 600 pixels (SVGA)
Display Type and Size	TFT Color LC (12.1")
Display Colors	65,536 Colors (no blink) / 16,384 Colors (blink)
Display Area	W 246.0 x H 184.5 mm [W 9.69 x H 7.26 in]
Touch Screen	Resistive Film (analog)
Backlight	White LED
Storage Temperature	-20 to 60° C [-4 to 140° F]
Environmental Ratings	IP20
Certifications	CE, CSA, UL Listed C1D2, RoHS, ABS, DNV, ATEX



Product Specifications

Part Number to Order	PFXGP4601TADR	PFXGP4601TADR
SD Card	x1	x1
Serial Ports (COM1)	RS-232C	RS-232C
Serial Ports (COM2)	RS-422/485	RS-422/485
Ethernet	x1	x1
USB (1)	Type-A (2.0)	Type-A (2.0)
USB (2)	Mini-B (2.0)	Mini-B (2.0)
Brightness / Contrast	16 levels of adjustment	16 levels of adjustment
Programming Memory	32mb Flash EPROM	32mb Flash EPROM
Backup Memory	320kb SRAM w/ battery backup	320kb SRAM w/ battery backup
Ambient Operating Temp	0 to 55° C [32 to 131° F]	0 to 55° C [32 to 131° F]
Input Voltage	24 VDC	24 VDC
Power Consumption	17 W or less	17 W or less

* Product is conformal coated

GP4000VM



Description

Introducing the GP4000VM series, a video unit compatible HMI. Like all Pro-face hardware, the Pro-face GP4000VM series offers extensive connectivity with a wide range of industrial controllers. This series includes the 12.1" PFXGP4621 and the 10.4" PFXGP4521 displays, both of which allow for a video unit to be mounted on the back with minimal effort.

Mount a Video unit or show analog camera images on a GP unit. Review information on the video unit module and RGB Input Unit.

Visualization on manufacturing floors has become increasingly important to manage product development and avoid potential line errors. Utilizing camera monitoring allows machine operators to view and track activity, and address any hazards quickly. To address the needs of these customers, Pro-face has expanded the GP4000 Series with a video unit compatible HMI.

Features

- VM Unit (GP3000-VM01)
RGB Input Unit (GP3000-RGB201)
- Easily mounted on the back of unit
- Programmed easily with GP-Pro EX
- Compatible with Pro-face Remote HMI
- Compatible with EZ Series
- Camera images display any portion of machine or assembly line
- Available with conformal coating.

10.4" GP4000VM

Analog Touchscreen Operator Interface
with Video Unit Attachment Option

General Specifications

Graphic Display Resolution	640 x 480 pixels (VCA)
Display Type and Size	TFT Color LCD (10.4")
Display Colors	65,536 Colors (No blink)/16,384 Colors (blink)
Display Area	W 211.2 x H 158.4 mm [W 8.31 x H 6.24 in]
Touch Screen	Resistive Film (analog)
Backlight	White LED
Storage Temperature	-20 to 60° C [-4 to 140° F]
Environmental Ratings	IP65f, NEMA Type 4x/13
Certifications	CE, CSA, UL Listed C1D2, RoHS, GOST, KC, DNV



Product Specifications

	PFXGP4521TAA	PFXGP4521TAD
Part Number to Order	PFXGP4521TAAC*	PFXGP4521TADC*
SD Card	Yes	
Serial Ports (COM1)	RS-232C	
Serial Ports (COM2)	RS-422/485	
Ethernet	Yes	
USB (1)	Type-A (2.0)	
USB (2)	Mini-B (2.0)	
Brightness / Contrast	16 levels of adjustment	
Programming Memory	32mb Flash EPROM	
Backup Memory	320kb SRAM w/ battery backup	
Ambient Operating Temp	0-55 deg C [32 to 131 deg F]	
Input Voltage	100-240 VAC	24 Vdc
Power Consumption	100 Vac: <44VA 240 Vac: <58VA	

* Conformal Coated Version

12.1" GP4000VM

Analog Touchscreen Operator Interface
with Video Unit Attachment Option

General Specifications

Graphic Display Resolution	800 x 600 pixels (SVGA)
Display Type and Size	TFT Color LCD (12.1")
Display Colors	65,536 Colors (No blink)/16,384 Colors (blink)
Display Area	W246.0 x H184.5 mm [W9.69 x H7.26 in.]
Touch Screen	Resistive Film (analog)
Backlight	White LED
Storage Temperature	-20 to 60° C [-4 to 140° F]
Environmental Ratings	IP65f, NEMA Type 4x/13
Certifications	CE, CSA, UL Listed C1D2, RoHS, GOST, KC, DNV



Product Specifications

Part Number to Order	PFXGP4621TAA PFXGP4621TAAC*	PFXGP4621TAD PFXGP4621TADC*
SD Card	Yes	
Serial Ports (COM1)	RS-232C	
Serial Ports (COM2)	RS-422/485	
Ethernet	Yes	
USB (1)	Type-A (2.0)	
USB (2)	Mini-B (2.0)	
Brightness / Contrast	16 levels of adjustment	
Programming Memory	32mb Flash EPROM	
Backup Memory	320kb SRAM w/ battery backup	
Ambient Operating Temp	0-55 deg C [32 to 131 deg F]	
Input Voltage	100-240 VAC	24 Vdc
Power Consumption	100 Vac: <44VA 240 Vac: <58VA	

* Conformal Coated Version

GP4000VM Unit

Analog Touchscreen Operator Interface
Video Unit Attachment

General Specifications

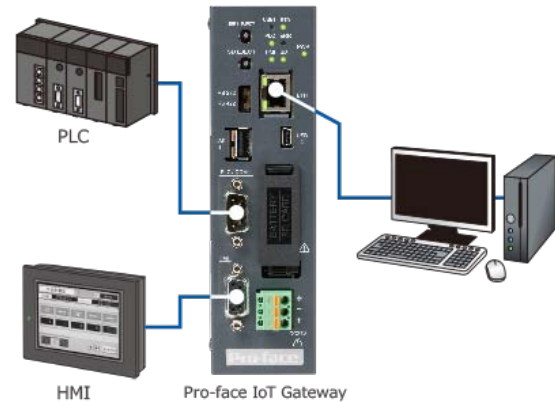
Rated Voltage	DC5V +/- 5% (supplied by the display unit)
Power Consumption	DC5V 1.3A (max.)
Voltage Endurance	DC Display: AC1000V 20mA for 1 min AC Display: AC1500V 20mA for 1 min
Certifications	CE, UL



Product Specifications

Part Number to Order	GP3000-RGC201
Surrounding Air Temperature	0 to 50°C
Storage Temperature	-20 to +60°C
Ambient Humidity	10 - 90% RH (wet bulb temp: 39°C max.)
Storage Huidity	10 - 90% RH (wet bulb temp: 39°C max.)
Dust	0.1mg/m3 and below (non-conductive levels)
Pollution Degree	For use in POLution Degree 2 environment
Atomosphere	Free of corrosive gasis
Air Pressure Vibration Resistance	800 to 1114hPa (2000 meters above sea-level maximum)

GP4G01 Pro-face IoT Gateway



Description

The new Pro-face IoT Gateway, GP4G01, relays data communication between the HMI and the PLC. No ports and no program changes are required, and it retains communication of the connected devices even when Pro-face IoT Gateway is powered off.

Features

- Relaying data communication between HMI and PLC (when using the gateway mode)
- Connect without serial communication I/F available
- Collect data without changing programs
- Change settings on a Web browser

Product Specifications

Part Number to Order	PFXGP4G01DNWLS
SD Card	Yes
Serial Ports (PLC/COM1)	RS-232C/422/485
Serial Ports (HMI)	RS-232C/422/485
Ethernet	(RJ-45) x 1
USB (1)	Type-A (2.0) x 1
USB (2)	Mini-B (2.0) x 1
Application Memory	FLASH EPROM 32MB
Backup Memory	SRAM 512KB
Input Voltage	24Vdc
Ambient Operating Temperature	0 to 60°C (32 to 140 °F)
Power Consumption	11W or less (Maximum power consumption) 7W or less (When power is not supplied to external devices)

GP4000 Modular



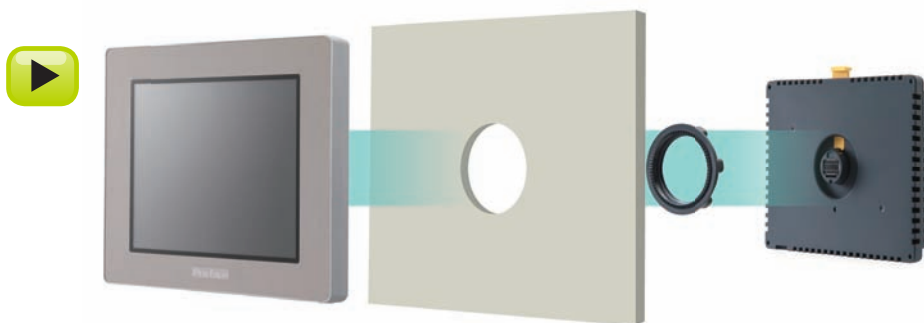
Description

This dedicated operator interface touch screen is ideal for OEMs and high graphical detail applications. It is part of a latest line of Pro-face brand operator interfaces. The bright, crisp, and clear QVGA display of this model is complemented with a large viewing area, and no grid analog for improved visibility and precise part placement.

A host of features include Ethernet, USB, and RS232, 422, 485 serial ports. The extensive network connectivity allows support of up to two simultaneous protocols making this a highly versatile operator interface.

Features

- 65k Color, Clear, Bright, High-Resolution TFT Display
- Energy Efficient LED Display
- No Grid Analog Touch Panel for Improved Visibility and Precise Part Placement
- Supports different types of Protocol Drivers (communicates to two selected drivers)
- Separate front & rear module for quick installation in 22mm hole
- 10/100 Base-T Ethernet, and USB



Modular Type For Easy Mounting

3.5" Modular – GP4000

Touchscreen Operator Interface with Separate Front and Rear Module and 22mm Mounting

General Specifications

Graphic Display Resolution	320 x 240 pixels (QVGA)
Display Type and Size	TFT Color LCD (3.5")
Display Colors	65,536 Colors
Display Area	W 70.56 x H 52.92 mm [W 2.78 x H 2.08 in]
Touch Screen	Resistive Film (analog)
Backlight	White LED
Storage Temperature	-20 to 60° C [-4 to 140° F]
Environmental Ratings	NEMA #250 Type 4x, Display IP65f, Rear IP20
Certifications	CE, CSA, UL Listed C1D2, RoHS, GOST, KC, DNV

3D
CAD

360



Product Specifications

Part Number to Order	PFXGM4201TAD	PFXGM4B01D*
SD Card	No	No
Serial Ports (COM1)	RS-232C / 422 / 485	RS-232C / 422 / 485
Serial Ports (COM2)	No	No
Ethernet	x1	x1
USB (1)	Type-A (2.0)	Type-A (2.0)
USB (2)	Mini-B (2.0)	Mini-B (2.0)
Brightness / Contrast	16 levels of adjustment	n/a
Programming Memory	8mb Flash EPROM	8mb Flash EPROM
Backup Memory	128kb nvSRAM	128kb nvSRAM
Ambient Operating Temp	0 to 50 °C (32 to 122 °F)	0 to 50 °C (32 to 122 °F)
Input Voltage	24 VDC	24 VDC
Power Consumption	6.5 W or less	1.6 W or less

*Rear Module only. Rear Module Installation Adapter "PFXZXMADSA1" is required for installation.

5.7" Modular – GP4000

Touchscreen Operator Interface with Separate Front and Rear Module and 22mm Mounting

General Specifications

Graphic Display Resolution	320 x 240 pixels (QVGA)
Display Type and Size	TFT Color LCD (5.7")
Display Colors	65,536 Colors
Display Area	W 115.2 x H 86.4 mm [W 4.53 x H 3.4 in]
Touch Screen	Resistive Film (analog)
Backlight	White LED
Storage Temperature	-20 to 60° C [-4 to 140° F]
Environmental Ratings	NEMA #250 Type 4x, Display IP65f, Rear IP20
Certifications	CE, CSA, UL Listed C1D2, RoHS, GOST, KC, DNV



3D
CAD

360



Product Specifications

Part Number to Order	PFXGM4301TAD	PFXGM4B01D*
SD Card	No	No
Serial Ports (COM1)	RS-232C / 422 / 485	RS-232C / 422 / 485
Serial Ports (COM2)	No	No
Ethernet	Yes	x1
USB (1)	Type-A (2.0)	Type-A (2.0)
USB (2)	Mini-B (2.0)	Mini-B (2.0)
Brightness / Contrast	16 levels of adjustment	n/a
Programming Memory	8mb Flash EPROM	8mb Flash EPROM
Backup Memory	128kb nvSRAM	128kb nvSRAM
Ambient Operating Temp	0 to 50 °C (32 to 122 °F)	0 to 50 °C (32 to 122 °F)
Input Voltage	24 VDC	24 VDC
Power Consumption	6.8 W or less	1.6 W or less

*Rear Module only. Rear Module Installation Adapter "PFXZXMADSA1" is required for installation.

GP4100 Compact



Description

The Pro-face GP4100 Series compact operator interface offers a crisp, clear and bright, 480 x 272 pixel full color TFT display with 65,536 colors. Small, powerful, and easy to use!

Equipped with your choice of Ethernet or Serial Port options, this small, but powerful compact HMI can be used in a number of applications.

Features

- Crisp, clear and bright, 480 x 272 Full Color Display
- No Grid Analog Touch Panel for improved visibility and precise part placement
- Touch Panel operation within a text panel replacement form factor
- Energy efficient, maintenance free LED backlight

4.3" Compact – GP4100T

Full Color Touchscreen
Operator Interface Interface

General Specifications

Graphic Display Resolution	480 x 272 pixels
Display Area	W 95 x H 53.9 mm
Display Type and Size	TFT Color LCD (4.3")
Display Colors	62,536 colors
Touch Screen	Resistive Film (analog)
Backlight	White LED
Brightness Adjustment	16 levels of adjustment
Ambient Operating Temp	0 to 50° C [32 to 122° F]
Storage Temperature	-20 to 60° C [-4 to 140° F]
Environmental Ratings	IP65f, Type 1, Type 4x (indoor use only), Type 13
Certifications	CE, UL 61010-1, 61010-2-201



Product Specifications

Part Number to Order	PFXGP4114T2D	PFXGP4115T2D	PFXGP4115T3D	PFXGP4116T2D
Application Memory	8MB	8MB	8MB	8MB
Backup Memory	Flash EPROM 128 MB	Flash EPROM 128 MB	NVRAM	Flash EPROM 128 MB
Serial Port	n/a	RS-232C x1	RS-232C x1	RS-422/485 x1
Ethernet	RJ-45 Modular Jack x1	n/a	n/a	n/a
USB Type A	USB 2.0 (Type A) x1	USB 2.0 (Type A) x1	USB 2.0 (Type A) x1	USB 2.0 (Type A) x1
USB mini-B	USB 2.0 (mini-B) x1	USB 2.0 (mini-B) x1	USB 2.0 (mini-B) x1	USB 2.0 (mini-B) x1
Input Voltage	12 to 24 Vdc	12 to 24 Vdc	12 to 24 Vdc	12 to 24 Vdc
Power Consumption (supplied by USB)	3.9 W or less	3.4 W or less	3.4 W or less	3.6 W or less
Power Consumption (not supplied by USB)	8.1 W or less	7.5 W or less	7.5 W or less	7.7 W or less

GP4000H Graphical Pendant Station



Description

The Pro-face GP4000H Graphical Pendant Station offers multiple models to meet the needs of your application. The standard product line offers extensive, built-in, time-saving features that help customers develop fast, consistent, standardized graphical interfaces. Add single platform data management and control with GP-Pro Ex and Pro-Server EX software to complete the winning combination.

Features

- Tethered HMIs with full graphic touch screen
- Built-in Safety Features: Emergency Stop, 3-Position Enable Switch, and Key Switch
- Ideal for use with portable machine diagnostic or maintenance carts
- Connect directly to PLC or use easy disconnect access points



5.7" Graphical Pendant Station – GP4000H

Touchscreen Operator Interface with
11 Function Keys and Dual Protocol
Support.

General Specifications

Touch Screen	Resistive Film (analog)
Backlight	White LED
Ambient Operating Temp	0 to 40° C (32 to 104° F)
Storage Temperature	-20 to 60° C [-4 to 140° F]
Environmental Ratings	IP65
Certifications	CE, UL, CSA



3D
CAD



Product Specifications

Part Number to Order	PFXGP4311HTAD	PFXGP4311HTADER	PFXGP4311HTADERK Red PFXGP4311HTADEYK Yellow PFXGP4311HTADEGK Gray
Emergency Switch	No emergency switch	Emergency switch (Red)	Emergency switch + Key switch
Display Type and Size	TFT Color LCD (5.7")		
Display Colors	65,536 Colors (No blink) / 16,384 (No blink)		
Display Area	W115.2 x H86.4 mm [W4.54 x H3.40 in]		
Brightness/Contrast	16 Levels (Adjusted with touch panel)		
Graphic Display Resolution	640 x 480 Pixels (VGA)		
Function Keys	11 Keys		
SD Card	SD Card Slot x 1		
Serial Ports (COM1)	RS-232C / RS-422 / RS-485		
Ethernet	Yes		
USB (1)	Type-A (1.1)		
Application Memory	Flash EPROM 32MB		
Data Backup	SRAM 320kb		
Input Voltage	24 VDC		
Power Consumption	12W or less (When power is not supplied to external devices: 8W or less)		

LT4000 Modular



Description

The LT4000M provides both HMI, digital and analog control in a single unit.

A unique modular style allows the display and rear module to be mounted directly (to each other) or separately (connected by a 3 or 5m cable).

Features

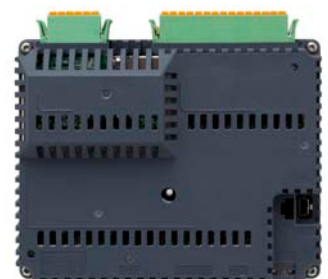
- Compact all-in-one unit for easy installation in small spaces
- 22mm hole mounting (similar to a pushbutton) saves time
- Flexible installation choices for integrated or separated display and rear module



Mount the unit as one (with 22mm hole mounting), or separate with the processor on a DIN rail with the available separation cable.



Easy wiring with removable spring I/O connector

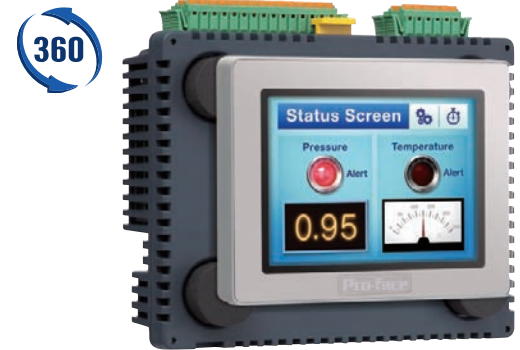


3.5" Modular – LT4000

Touchscreen Operator Interface plus
Control, with 22mm mounting

General Specifications

Graphic Display Resolution	320 x 240 pixels (QVGA)
Display Type and Size	TFT Color LCD (3.5")
Display Colors	65,536 Colors
Display Area	W 70.56 x H 52.92 mm [W 2.78 x H 2.08 in]
Touch Screen	Resistive Film (analog)
Backlight	White LED
Ambient Operating Temp	0 to 50° C [32 to 122° F]
Storage Temperature	-20 to 60° C [-4 to 140° F]
Environmental Ratings	IP65f, NEMA #250 Type 4x, rear module IP20
Certifications	CE, CSA, UL Listed, RoHS, GOST, KC, DNV/GL



Product Specifications

Part Number to Order	Source	PFXLM4201TADAC*	PFXLM4201TADDC*
	Sink	PFXLM4201TADAK*	PFXLM4201TADDK*
Serial Ports (COM1)		RS-232C / 485 (RJ45)	RS-232C / 485 (RJ45)
Ethernet		x1	x1
USB (1)		Type-A (2.0)	Type-A (2.0)
USB (2)		Mini-B (2.0)	Mini-B (2.0)
Built in DIO (Input)		12 points	20 points
Built in DIO (Output)		6 points	10 points
Built in AIO (Input)		2 points (13bit) / 2 points (16 bit)	0 points
Built in AIO (Output)		2 points (12 bit)	0 points
CANopen Master		63 stations	63 stations
Brightness/Contrast Controls		16 levels of adjustment	16 levels of adjustment
Backup Memory		128KB nvSRAM	128KB nvSRAM
Programming Memory		16MB Flash EPROM	16MB Flash EPROM
Input Voltage		24 VDC	24 VDC
Power Consumption		<9W	<9W

* K suffix = Sink

* C suffix = Source

5.7" Modular – LT4000

Touchscreen Operator Interface plus
Control, with 22mm mounting

General Specifications

Graphic Display Resolution	320 x 240 pixels (QVGA)
Display Type and Size	TFT Color LCD (5.7")
Display Colors	65,536 Colors
Display Area	W 115.2 x H 86.4 mm [W 4.53 x H 3.4 in]
Touch Screen	Resistive Film (analog)
Backlight	White LED
Ambient Operating Temp	0 to 50° C [32 to 122° F]
Storage Temperature	-20 to 60° C [-4 to 140° F]
Environmental Ratings	IP65f, NEMA #250 Type 4x, rear module IP20
Certifications	CE, CSA, UL Listed, RoHS, GOST, KC, DNV/GL



Product Specifications

Part Number to Order	Source	PFXLM4301TADAC*	PFXLM4301TADDC*
	Sink	PFXLM4301TADAK*	PFXLM4301TADDK*
Serial Ports (COM1)		RS-232C / 485 (RJ45)	RS-232C / 485 (RJ45)
Ethernet		x1	x1
USB (1)		Type-A (2.0)	Type-A (2.0)
USB (2)		Mini-B (2.0)	Mini-B (2.0)
Built in DIO (Input)		12 points	20 points
Built in DIO (Output)		6 points	10 points
Built in AIO (Input)		2 points (13bit) / 2 points (16 bit)	0 points
Built in AIO (Output)		2 points (12 bit)	0 points
CANopen Master		63 stations	63 stations
Brightness/Contrast Controls		16 levels of adjustment	16 levels of adjustment
Backup Memory		128KB nvSRAM	128KB nvSRAM
Programming Memory		16MB Flash EPROM	16MB Flash EPROM
Input Voltage		24 VDC	24 VDC
Power Consumption		<10W	<10W

* K suffix = Sink

* C suffix = Source

Rear Module – LT4000

Touchscreen Operator Interface plus
Control, with 22mm mounting

General Specifications

Graphic Display Resolution	320 x 240 pixels (QVGA)
Ambient Operating Temp	Horizontal installation: 0 to 50°C (32 to 122 °F) Vertical installation: 0 to 40°C (32 to 104°F)
Storage Temperature	-20 to 60° C [-4 to 140° F]
Environmental Ratings	IP20
Certifications	CE, CSA, UL Listed, RoHS, GOST, KC, DNV



Product Specifications

Part Number to Order	PFXLM4B01DDK* PFXLM4B01DDC*	PFXLM4B01DAK* PFXLM4B01DAC*
Programming Memory	16MB Flash EPROM	16MB Flash EPROM
Backup Memory	128KM nvSRAM	128KM nvSRAM
Serial Ports (COM1)	RS-232C / 485 (RJ45)	RS-232C / 485 (RJ45)
Ethernet	x1	x1
USB (1)	Type-A (2.0)	Type-A (2.0)
USB (2)	Mini-B (2.0)	Mini-B (2.0)
Built in DIO (Input)	20 points	12 points
Built in DIO (Output)	10 points	6 points
Built in AIO (Input)	n/a	2 channel (13 bit), 2 channel (16 bit)
Built in AIO (Output)	n/a	2 channel (12 bit)
CANopen Master	63 stations	63 stations
Input Voltage	24 VDC	24 VDC
Power Consumption	<9W	<9W

*K suffix = Sink

*C suffix = Source

*Rear Module only. Rear Module Installation Adapter "PFXZXMADSA1" is required for installation.

EZ Series USB Solutions



Description

EZ Illuminated Switch can accommodate the need for hardware switches and light indicators. Displayable indicator colors and patterns can be specified via the software.

EZ Numpad is an alphanumeric keypad that features the same 22-millimeter holes used to install hardware switches and lamps used on production work sites.

EZ Tower Light makes your status system easier to understand by leveraging the multi-color LEDs which allows the flexibility to control 4 colors and 2 flash rates per unit.

EZ LAN Adapter is a conversion adapter that attaches to the USB (Type A) interface on the display unit so you can use it as an Ethernet interface.

Features

- Easy to connect - USB Connection
- Easy to install - 22mm Hole Mounting
- Easy to setup - No need for special programming, easy setup by GP-Pro EX
- Multi-color LED's allow colors and functions to be changed per pre-set status
- Switch between input and function keys

Think Outside the HMI



Illuminated Switch

A unit of 5 illuminated switches with multiple color LED easily connected with HMI via USB

General Specifications

Rated Input Voltage	5 Vdc (powered from USB bus)
Input Voltage Limits	4.75 to 5.25 Vdc
Power Consumption	2.0W max
Surrounding Air Temperature	0 to 55° C (32 to 131° F)
Storage Temperature	-20 to 60° C (-4 to 140° F)
Environmental Ratings	IP65 front face / IP20 back
Supported Software	GP-Pro EX Ver. 3.1 or later
Certifications	CE, CSA, UL, RoHS



Product Specifications

Part Number to Order	PFXZCCEUSG1
External Dimension	W 122 x H54 x D 28mm (W 4.80 x H 2.13 x D 1.10in)
Weight	110g (0.24lb) or less
Number of Switches	5 illuminated switches
Durability of Switches	1 million times or more for each switch
LED Colors	Red, Green, Yellow, Blue, White, Orange
Function Key Labels	Printable and replaceable insert labels
USB Cable Length	1m (removable)
Connection	USB I/F: Type B (socket), USB 2.0 Full Speed
Connectable HMI	GP4000, GP4000M, WinGP, LT4000M, SP5000



Type A



*When using the unit with GP4000M, it is necessary to use self power USB HUB.

USB 2.0*



Numpad

Programmable alphanumeric keypad
easily connected with HMI via USB

General Specifications

Rated Input Voltage	5 Vdc (powered from USB bus)
Input Voltage Limits	4.75 to 5.25 Vdc
Power Consumption	.75 W or less
Surrounding Air Temp.	0 to 55° C (32 to 131° F)
Storage Temperature	-20 to 60° C (-4 to 140° F)
Environmental Ratings	IP65 UL50E TYPE 4X (Indoor Use Only)
Supported Software	GP-Pro EX Ver. 3.6 or later
Certifications	CE, CSA, UL, C-tick, KC, Gost-R, RoHS

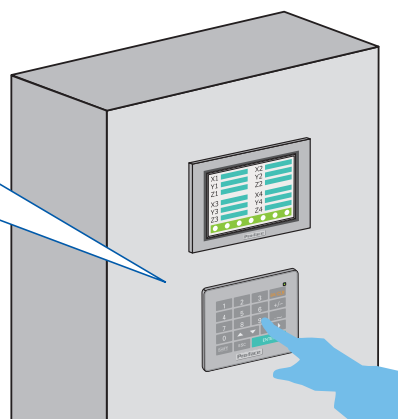


Product Specifications

Part Number to Order	PFXZCCEUKB1
External Dimension	W 97.6 x H 80.0 x D 31.5 mm (W 3.84 x H 3.15 x D 1.24 in.)
Weight	150 g (0.33 lb) or less
Function Key Label	Printable and replaceable insert labels
USB Cable Length	1m (Removable) *Max 5m with extension cable
Connection	Type miniB (socket), USB 2.0 Full Speed
Connectable HMI	GP4000, GP4000M, WinGP, LT4000M, SP5000



Compare data during
input operation to
reduce mistakes.



Tower Light

Tower light unit easily
connected with HMI via USB

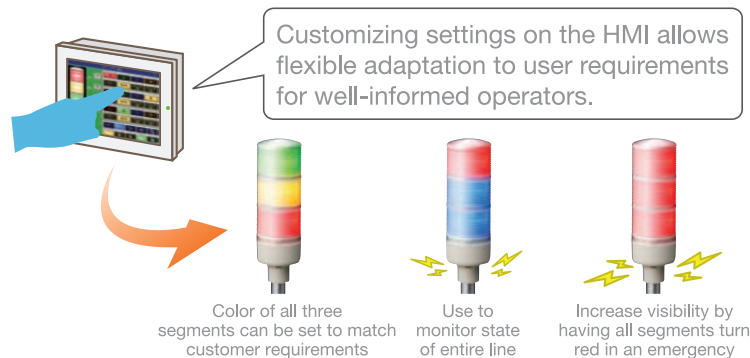
General Specifications

Rated Input Voltage	5 Vdc (powered from USB bus)
Connection	Type miniB (socket), USB 2.0 Full Speed
Power Consumption	2.0W max
Storage Temperature	-35 to 70° C (-95 to 158° F)
Ambient Operating Temp	0 to 55° C (32 to 131° F)
Environmental Ratings	IP54
Supported Software	GP-Pro EX Ver. 3.1 or later
Certifications	UL 508, cUL, CSA22.2, CE



Product Specifications

Part Number to Order	PFXZCETWHA1	PFXZCETWW1
Supported Software	GP-Pro EX Ver. 3.0.1 or later	GP-Pro EX Ver. 3.0.1 or later
Installation	Tube mounting with fixing plate	Base mounting
Units	3	3
Color	Red / Green / Blue / Yellow	Red / Green / Blue / Yellow
Light Mode	Off / On / Blink (High) / Blink (Low)	Off / On / Blink (High) / Blink (Low)
Buzzer	4 sounds	4 sounds
Buzzer Volume	High / Middle / Low - 85dB	High / Middle / Low - 82dB
Buzzer Tone	High / Low	High / Low
Weight	0.3kg (0.66lb)	0.3kg (0.66lb)



LAN Adapter

Tower light unit easily
connected with HMI via USB

General Specifications

Rated Input Voltage	5 Vdc (powered from USB bus)
Connection	USB Type A
Power Consumption	0.63 W or less
Storage Temperature	-20 to 60° C (-4 to 140° F)
Ambient Operating Temp	0 to 55° C (32 to 131° F)
Environmental Ratings	IEC/EN 61131-2 compliant
Supported Software	GP-Pro EX Ver. 4.08 or later



Product Specifications

Part Number to Order	PFXZCGEUUE1
Supported Software	GP-Pro EX Ver. 4.08 or later
Connectable HMI	GP4000 Series
Ethernet I/F	Modular Jack (RJ-45), IEEE802.3i/IEEE802.3u, 10BASE-T/100BASE-TX
USB I/F	Type A (plug), USB 2.0 High-Speed (480Mbps)
External Dimensions	W105 x H40 x D27 mm (W4.13 x H1.57 x D1.06 in.)
Cable Length	0.5 m (1.64 ft), including connections
Weight	100 g (0.22 lb)



SP5000 Enhanced HMI



Description

Pro-face has created a new market with the new SP5000 Series interface terminal—or Smart Portal—a new category of HMI, to improve production efficiency by better leveraging the big data generated at production work sites and offices.

The new SP5000 Series interface terminal has been developed to respond to the need to obtain data and supply it where required in an appropriate format for efficiency improvements and the need safely network production work sites with offices.

Until now, networking existing production worksite facilities with an office has necessitated the introduction of large-scale systems and the upgrading of facilities. By introducing the Smart Portal to the production work site, information such as production results and machine data, and production management data required in the office can be made smart at low cost. With the release of the SP5000 Series, Pro-face hopes to create a new Smart Portal market, which it forecasts to reach the same scale as the current HMI market within the next five years.

Features

- 16-million-color TFT LCD multi-touch panel
- Modular design and screwless box module attachment for improved maintainability when repairing or replacing.
- Available in 12 configurations – 6 display module models and 2 box module models
- Supports applications that run on Windows
- Equipped with two Ethernet ports standard
- Equipped with two standard SIO ports and up to three USB ports
- By using together with Pro-face Remote HMI, it is possible to check and operate machinery from mobile devices such as smartphones and tablets
- Compliant with various international safety standards and IP65F/IP66F/IP67F for use in a broad range of situations

Premium Display – SP5000

Smart Portal Analog Touch
Panel Display Module

General Specifications

Backlight	White LED
Storage Temperature	-20 to 60° C [-4 to 140° F]
Ambient Operating Temp	0 to 60° C [32 to 140° F]
Environmental Ratings	w/ a factory-installed front USB cover: IP65, IP67F. w/ a front USB cover as an option: IP66F, IP67F Type 1, Type 4X (Indoor Only)/13
Certifications	CE, UL61010-2-201, RoHS, ATEX, CCS, BV, RINA



Product Specifications

Part Number to Order	PFXSP5500TPD PFXSP5500TPDFOC*	PFXSP5600TPDC PFXSP5600TPDFOC*	PFXSP5660TPD PFXSP5660TPDFOC*	PFXSP5700TPD PFXSP5700TPDFOC*
Display Type and Size	10.4" TFT Color LCD	12.1" TFT Color LCD	12.1" TFT Color LCD	15" TFT Color LCD
Display Colors	16 million colors	16 million colors	16 million colors	16 million colors
Graphic Display Resolution	800 x 600 pixels (SVGA)	1,024 x 768 pixels (XGA)	1,024 x 768 pixels (XGA)	1,024 x 768 pixels (XGA)
Display Area	W211.2 x H58.4mm [W8.31 x H2.30in]	W245.76 x H184.32mm [W9.68 x H7.26in]	W245.76 x H184.32mm [W9.68 x H7.26in]	W304.1 x H228.1mm [W11.97 x H8.98in]
Touch Panel Type	Resistive Film (analog, multi-touch)			
Brightness/Contrast	0 to 100			
Programming Memory	64MB (CFast card)			
Backup Memory	NVRAM 320 KB			
Ethernet	n/a	n/a	Wireless	n/a
USB (1)	USB 2.0 (Type-A)			
USB (2)	USB 2.0 (mini-B)			
Input Voltage	12 to 24 Vdc			

* Product is conformal coated

Premium XL Display – SP5000

Smart Portal Analog Touch
Panel Display Module

General Specifications

Backlight	White LED
Storage Temperature	-20 to 60° C [-4 to 140° F]
Ambient Operating Temp	0 to 55° C [32 to 131° F]
Environmental Ratings	w/ a factory-installed front USB cover: IP65, IP67F. w/ a front USB cover as an option: IP66F, IP67F Type 1, Type4X (Indoor Only)/13
Certifications	CE, UL61010-2-201, RoHS, CCS, BV, RINA



Product Specifications

Part Number to Order	PFXSP5700WCD	PFXSP5800WCD
Display Type and Size	15.6" TFT Color LCD	18.5" TFT Color LCD
Display Colors	16 million colors	
Graphic Display Resolution	1,366 x 768 pixels (FWXGA)	
Display Area	W 344.2 x H 193.5mm	W 409.8 x H 230.4mm
Touch Panel Type	Projected Capacitive (multi-touch, 5 points)	
Brightness/Contrast	0 to 100 (adjusted with touch panel or software)	
Programming Memory	64MB (SD card)	
Backup Memory	NVRAM 320 KB	
Ethernet	IEEE802.3i/IEEE802.3u/IEEE802.3ab, 10BASE-T/100BASE-TX/1000BASE-T	
USB (1)	USB 2.0 (Type-A) x 1	
USB (2)	USB 2.0 (mini-B) x 1	
Input Voltage	12 to 24 Vdc	

Advanced Display – SP5000

Smart Portal Analog Touch
Panel Display Module

General Specifications

Backlight	White LED
Storage Temperature	-20 to 60° C [-4 to 140° F]
Ambient Operating Temp	0 to 60° C [32 to 140° F]
Environmental Ratings	IIP66F, IP67F, Type 1, Type 4X (Indoor Use Only)/13 on the front panel when properly installed in an enclosure ^{*1}
Certifications	CE, UL61010-2-201, RoHS, ATEX, CCS, BV, RINA



Product Specifications

Part Number to Order	PFXSP5400WAD PFXSP5400WADFOC*	PFXSP5500WAD PFXSP5500WADFOC*	PFXSP5600WAD PFXSP5600WADFOC*
Display Type and Size	7" TFT Color LCD	10.1" TFT Color LCD	12.1" TFT Color LCD
Display Colors	262,144 colors	262,144 colors	262,144 colors
Graphic Display Resolution	800 x 480 pixels (WVGA)	1,200 x 800 pixels (WXGA)	1,200 x 800 pixels (WXGA)
Display Area	W154.08 x H95.92mm [W6.06 x H3.78in]	W216.96 x H135.6mm [W8.54 x H5.34in]	W261.12 x H163.2mm [W10.28 x H6.43in]
Touch Panel Type	Resistive Film (analog, multi-touch)		
Brightness/Contrast	0 to 100		
Programming Memory	64MB (CFast card)		
Backup Memory	NVRAM 320 KB		
Input Voltage	12 to 24 Vdc		

* Product is conformal coated

¹ The front face of the unit, installed in a solid panel, has been tested using conditions equivalent to the standards shown in the specification. Even though the unit's level of resistance is equivalent to these standards, oils that should have no effect on the unit can possibly harm the unit. This can occur in areas where either vaporized oils are present, or where low viscosity cutting oils are allowed to adhere to the unit for long periods of time. If the unit's front face protection sheet becomes peeled off, these conditions can lead to the ingress of oil into the unit and separate protection measures are suggested. Also, if non-approved oils are present, it may cause deformation or corrosion of the front panel's plastic cover. Therefore, prior to installing the unit, be sure to confirm the type of conditions that will be present in the unit's operating environment. If the installation gasket is used for a long period of time, or if the unit and its gasket are removed from the panel, the original level of the protection cannot be guaranteed. To maintain the original protection level, be sure to replace the installation gasket regularly.

Advanced Display – SP5000

Smart Portal Analog Touch
Panel Display Module

General Specifications

Backlight	White LED
Storage Temperature	-20 to 60° C [-4 to 140° F]
Ambient Operating Temp	0 to 60° C [32 to 140° F]
Environmental Ratings	IP66F, IP67F, Type 1, Type 4X (Indoor Use Only)/13 on the front panel when properly installed in an enclosure ^{*1}
Certifications	CE, UL61010-2-201, RoHS, ATEX, CCS, BV, RINA



Product Specifications

Part Number to Order	PFXSP5600WAD PFXSP5600WADFOC*	PFXSP5600TAD PFXSP5600TADFOC*
Display Type and Size	12.1" TFT Color LCD	12.1" TFT Color LCD
Display Colors	262,144 colors	262,144 colors
Graphic Display Resolution	1,200 x 800 pixels (WXGA)	1,024 x 768 pixels (XGA)
Display Area	W261.12 x H163.2mm [W10.28 x H6.43in.]	W245.8 x H184.3 mm [W9.68 x H7.26 in.]
Touch Panel Type	Resistive Film (analog, multi-touch)	
Brightness/Contrast	0 to 100	
Programming Memory	64MB (CFast card)	
Backup Memory	NVRAM 320 KB	
Input Voltage	12 to 24 Vdc	

* Product is conformal coated

¹ The front face of the unit, installed in a solid panel, has been tested using conditions equivalent to the standards shown in the specification. Even though the unit's level of resistance is equivalent to these standards, oils that should have no effect on the unit can possibly harm the unit. This can occur in areas where either vaporized oils are present, or where low viscosity cutting oils are allowed to adhere to the unit for long periods of time. If the unit's front face protection sheet becomes peeled off, these conditions can lead to the ingress of oil into the unit and separate protection measures are suggested. Also, if non-approved oils are present, it may cause deformation or corrosion of the front panel's plastic cover. Therefore, prior to installing the unit, be sure to confirm the type of conditions that will be present in the unit's operating environment. If the installation gasket is used for a long period of time, or if the unit and its gasket are removed from the panel, the original level of the protection cannot be guaranteed. To maintain the original protection level, be sure to replace the installation gasket regularly.

Open Box – SP5000

Smart Portal Analog
Touch Panel Box Module

General Specifications

CPU	Intel Atom Processor E3825 1.3GHZ Dual core/Dual thread
Main Memory	DDR3L SDRAM 2 GB
Application Memory	64 MB - Free space about 17 GB
Backup Memory	NVRAM 320 KB
Storage Temperature	-20 to 60° C [-4 to 140° F]
Ambient Operating Temp	0 to 60° C [32 to 140° F]
Certifications	CE, UL508, RoHS, ATEX, CCS, BV, RINA



Product Specifications

Part Number to Order	PFXSP5B41 PFXSP5B41FOC	PFXSP5B41S8A PFXSP5B41S8AFOC	PFXSP5B41S8B PFXSP5B41S8BFOC
BLUE Open Studio 8.0 trial pre-installed	No	Yes	No
BLUE Open Studio 8.1 trial pre-installed	No	No	Yes
Power Consumption	25W max		
SD Card	SD Card Slot (Storage) x 1		
Cfast Card	CFAST Card Slot (System) x 1, CFAST Card Slot (Storage) x 1		
Serial Ports (COM1)	RS-232C / 422 / 485		
Serial Ports (COM2)	RS-232C / 422 / 485		
Ethernet	x2		
USB (1)	USB 2.0 (Type-A)		
USB (2)	USB 2.0 (Type-A)		
USB (3)	USB 2.0 (Type-A)		
USB (4)	USB 2.0 (mini-B)		
Sound Output	Speaker output 300mW (rated load: 8ohm, Frequency: 1kHz)		
Sound Input	MIC or LINE input (software switch), Connector: MINI-JACK dia 3.5mm		
Video Output Interface	DVI-D 24 pin (socket)		

* Product is conformal coated

Power Box – SP5000

Smart Portal Analog
Touch Panel Box Module

General Specifications

Storage Temperature	-20 to 60° C [-4 to 140° F]
Ambient Operating Temp	0 to 60° C [32 to 140° F]
Certifications	CE, UL508, RoHS, ATEX, CCS, BV, RINA



Product Specifications

Part Number to Order	PFXSP5B10 PFXSP5B10FOC*
----------------------	--

SD Card	2 slots
Serial Ports (COM1)	RS-232C / 422 / 485
Serial Ports (COM2)	RS-232C / 422 / 485
Ethernet	x2
USB (1)	USB 2.0 (Type-A)
USB (2)	USB 2.0 (Type-A)
USB (3)	USB 2.0 (mini-B)
Sound Output	Speaker output 300mW (rated load: 8ohm, Frequency: 1kHz)
Sound Input	n/a
Video Output Interface	n/a
AUX Input	n/a
AUX Output	Alarm Output / Buzzer Output

* FOC suffix denotes product is conformal coated

Standard Box – SP5000

Smart Portal Analog
Touch Panel Box Module

General Specifications

Storage Temperature	-20 to 60° C [-4 to 140° F]
Ambient Operating Temp	0 to 60° C [32 to 140° F]
Certifications	CE, UL508, RoHS, ATEX, CCS, BV, RINA



Product Specifications

Part Number to Order	PFXSP5B00 PFXSP5B00FOC*
----------------------	--

SD Card	2 slots
Serial Ports (COM1)	RS-232C / 422 / 485
Serial Ports (COM2)	RS-232C / 422 / 485
Ethernet	x2
USB (1)	USB 2.0 (Type-A)
USB (2)	USB 2.0 (Type-A)
USB (3)	USB 2.0 (mini-B)
Sound Output	Speaker output 300mW (rated load: 8ohm, Frequency: 1kHz)
Sound Input	n/a
Video Output Interface	n/a
AUX Input	n/a
AUX Output	Alarm Output / Buzzer Output

* FOC suffix denotes product is conformal coated

Multi-Converter – SP5000

SP5000 Multi-equipment
Data-Collecting Device

General Specifications

Storage Temperature	-20 to 60° C [-4 to 140° F]
Ambient Operating Temp	0 to 60° C [32 to 140° F]
Certifications	CE, UL508, RoHS, ATEX, CCS, BV, RINA



Product Specifications

Part Number to Order	PFXZCDAEXP1
Ethernet	x1 (10BASEET/100BASE-TX)
Input Voltage	10.8–28.8 VDC
Power Consumption	2.0W or less (37W or less w/ Box module)
Voltage Endurance	1,000 VAC, 20 mA for 1 minute
Insulation Resistance	500 VDC, 10 M Ω or more
Vibration Resistance	IEC/EN 61131-2 compliant 5–9 Hz Single amplitude 3.5 mm (0.14in) 9–150 Hz Fixed acceleration: 9.8 m/s ² X, Y, Z directions for 10 cycles (appx 100 minutes)
Shock Resistance	IEC/EN 61131-2 compliant 147 m/s ² , X, Y, Z directions for 3 times
Noise Immunity	Noise voltage: 1,000 Vp-p Pulse duration: 1 μ s Rise time: 1 ns (via noise simulator)
Grounding	n/a
External Dimensions	W189 x H134 x D36 mm [7.44 x 5.28 x 1.42]
Weight	.75 kg (1.65lb) or less

Multi-Display Adapter – SP5000

SP5000 Multi-equipment
Data-Collecting Device

General Specifications

Rated input voltage	12Vdc (Supplied by the Display Module)
Ambient Operating Temp	0 to 60° C [32 to 140° F]
Certifications	CE, UL508, RoHS, ATEX, CCS, BV, RINA

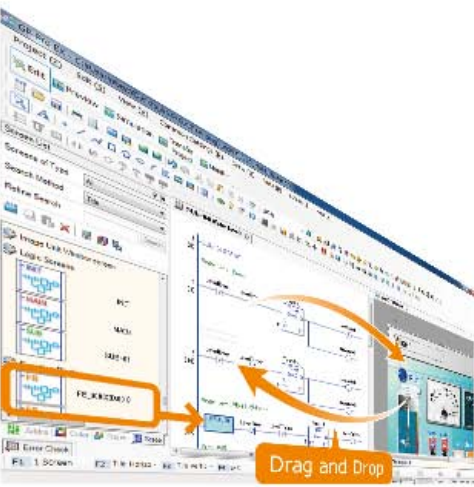


Product Specifications

Part Number to Order	PFXZCDADEXR1 PFXZCDADEXR1FOC
Surrounding Air Temperature	10 to 60 °C (32 to 140 °F)
Dust	0.1 mg/m ³ (10-7 oz/ft ³) or less (non-conductive levels)
Power Consumption	8W or less
Pollution Degree	For use in Pollution Degree 2 environment
Corrosive Gases	500 VDC, 10 My or more
Vibration Resistance	IEC/EN 61131-2 compliant 5-9 Hz Single amplitude 3.5 mm (0.14in) 9-150 Hz Fixed acceleration: 9.8 m/s ² X, Y, Z directions for 10 cycles (appx 100 minutes)
Shock Resistance	IEC/EN 61131-2 compliant 147 m/s ² , X, Y, Z directions for 3 times
Noise Immunity	Noise voltage: 1,000 Vp-p Pulse duration: 1 μ s Rise time: 1 ns (via noise simulator)
Grounding	n/a
External Dimensions	188 x 131 x 35 mm [7.4 x 5.16 x 1.38 in.]
Weight	800 g (1.76 lb) or less

SP5000 Control Modules
CANOpen and FLEXnetwork

CANopen FLEX NETWORK



Description

Combine the SP5000 power box unit (SP5B10) with any SP5000 display and either CANopen or Flex Network Master module for great performance, flexibility and network connectivity. Add single platform data management and control with GP-Pro Ex or Pro-Server EX software to complete the winning combination.

Connect with the SP5000 Series Power Box to expand the I/O feature and create a unit with simple control and:

- Reduce cost by downsizing equipment.
- Install optional features without changing the PLC configuration of the original equipment.
- Improve equipment on manufacturing floors by utilizing a data-mixed HMI that can connect with the host system directly to collect sensor information, as well as, a range of controller information to respond to data management trends accelerated by IIoT.

Features

- Screen creation and control programming with a piece of software
- Bit input/output 1024 points, Integer input/output 256 points
- Large-sized display (19" wide to 7" wide)
- Easily adding I/O features
- Mobility products supported (Pro-face HMI, Pro-face Connect)



Part Number	Description
PFXZCHEUCAM1	SP5000 CANopen Master COMM unit
PFXZCDEUCA1	SP5000 CANopen Slave COMM unit
PFXZCHEUFN1	SP5000 FLEX NETWORK Master COMM Unit
PFXCHUEJ1	J1939 Expansion Unit that enables SP5000/X Series to access the J1939 communication network

SP5000X eXtreme HMI



Description

Pro-face has developed a sunlight readable screen that is resistant to direct sunlight and extreme temperatures. The liquid crystal panel (1000cd/m²), provides an anti-reflection/anti-glare screen, and a high transmittance design. Easily read on-screen applications, even in high brightness environments.

With an enhanced information display unit and improved operability, this product is suitable for multiple applications under harsh environmental conditions including use in special purpose vehicles such as fire trucks and construction equipment; parking lots and gas stations; and the oil and gas industry.

Add Pro-face Connect, our remote access application, to create a full IoT solution to manage and control multiple devices from anywhere, at anytime.

Features

- Enhanced readability under sunlight.
 - High brightness liquid crystal panel (1000cd/m²)
 - Anti-reflection (Anti-glare)
 - High-transmittance design
- Environmentally resistant
 - Vibration/Shock Resistance approximately 2 to 2.7 times
 - Operating Temperature: -30° to 70° C (-22 to 158 °F)
 - IP66F, Type 4X (indoor use)
- Efficient maintenance
 - Modular structure
 - Exchangeable system card
 - Battery-less
- Easily start Pro-face IoT solution with Pro-face Connect or Remote HMI
- Extensive Connectivity with a wide range of devices and field network

eXtreme Display – SP5000X

eXtreme Outdoor HMI
Display Module

General Specifications

Backlight	White LED
Storage Temperature	-30 to 70° C [-22 to 158° F]
Ambient Operating Temp	-30 to 65° C [-22 to 149° F]
Environmental Ratings	IP66F
Certifications	CE, UL, RoHS, ATEX, CCS, BV, RINA



Product Specifications

Part Number to Order	PFXSP5490WAD	PFXSP5690WAD	PFXSP5790WAD*
Display Type and Size	7" Wide TFT Color LCD (Ultra High Brightness)	12.1" TFT Color LCD (Ultra High Brightness)	12.1" TFT Color LCD (Ultra High Brightness)
Display Colors	262,144 colors	262,144 colors	262,144 colors
Graphic Display Resolution	800 x 480 pixels (WVGA)	1,280 x 800 pixels (WXGA)	1,366 x 768 pixels (FWXGA)
Display Area	W152.4 x H91.4mm [W6.00 x H3.60in]	W261.1 x H163.2mm [W10.28 x H6.43in]	W344.2 x H193.5mm [W13.55 x H7.62in]
Touch Panel Type	Analog Resistive		
Surrounding Air Temperature	-30 to 65 °C [-4 to 140 °F]	-30 to +70 °C [-22 to 158 °F]	-20 to +60 °C [-22 to 149 °F]
Brightness/Contrast	0 to 100		
Programming Memory	64MB (CFast card)		
Backup Memory	NVRAM 320 KB		
Input Voltage	12 to 24 Vdc		
Power Consumption	29W max	37W max	48W max

This product is conformal coated.

*Coming in Q4 2019

eXtreme Box – SP5000X

eXtreme Outdoor HMI
Box Module

General Specifications

Storage Temperature	-20 to 60° C [-4 to 140° F]
Ambient Operating Temp	0 to 60° C [32 to 140° F]
Environmental Ratings	IP66F
Certifications	CE, UL, RoHS, ATEX, CCS, BV, RINA



Product Specifications

Part Number to Order	PFXSP5B90
SD Card	2 slots
Serial Ports (COM1)	RS-232C / 422 / 485
Serial Ports (COM2)	RS-232C / 422 / 485
Ethernet	x2
USB (1)	USB 2.0 (Type-A)
USB (2)	USB 2.0 (Type-A)
USB (3)	USB 2.0 (mini-B)
Sound Output	Speaker output 300mW (rated load: 8ohm, Frequency: 1kHz)
Sound Input	n/a
Video Output Interface	n/a
AUX Input	n/a
AUX Output	Alarm Output / Buzzer Output

This product is conformal coated.

STW6000 BASIC WEB HMI



Description

Pro-face America has developed the new STW6000 Series Basic Web HMI. Many industrial automation devices support HTML5, which can be displayed on PCs, tablets, and smartphones. As a Web HMI, STW6000 can easily display HTML5 data from multiple devices, allowing complete visibility over a company's intranet.

Many industrial devices and even simple instrumentation components now have an embedded web server and a fixed web page that serves up diagnostic data and often allows for configuration of the device via HTML5. Some of the more complex devices, like PLCs, allow customers to customize HTML5 pages loaded on an embedded web server. The trend with SCADA packages allows publication of screens in HTML5 format for mobile devices.

The STW6000 series allows visibility to all these devices, using a web browser platform and requires no programming beyond configuring and entering URLs.

Features

- 16-million-color TFT LCD multi-touch panel
- Aluminum Front Panel
- Enhanced Cybersecurity
- Enhanced Data Management with BLUE Open Studio
- Equipped with Ethernet ports standard
- Supports HTML5
- 4.3" to 15.6" Wide Display sizes available

Basic Web HMI – STW6000

Web Terminal Analog
Display Module

General Specifications

Backlight	White LED
Rated Input Voltage	24 Vdc
Ambient Air Temp	0 to 50 °C [32 to 122 °F]
Environmental Ratings	IP65F, TYPE 4X/13
Certifications	CE, UL, CSA, KC
Interface	USB, Ethernet



Product Specifications

Part Number to Order	PFXSTW6200WAD	PFXSTW6400WAD	PFXSTW6500WAD
Display Type and Size	4.3" Wide TFT Color LCD	7" Wide TFT Color LCD	10" Wide TFT Color LCD
Display Colors	16 Million Colors	16 Million Colors	16 Million Colors
Graphic Display Resolution	480 x 272 pixels (WQVGA)	800x 480 pixels (WVGA)	1,024 x 600 pixels (WSVGA)
Display Area	W95.04 x H53.86mm [W3.74 x H2.12in]	W154.08 x H85.92mm [W6.066 x H3.382in]	W222.72 x H125.28mm [W8.77 x H4.93in]
Touch Panel Type	Resistive film (analog)		
Brightness Control	16 Levels (Adjusted with touch panel or software)		
Storage Temperature	-20 to 60 °C (-4 to 140°F)		
Allowable Voltage Drop	2 ms or less	5 ms or less	10 ms or less
Input Voltage	24 Vdc		
Power Consumption	6.9W max	9W max	12.6W max

Basic Web HMI – STW6000

Web Terminal Analog
Display Module

General Specifications

Backlight	White LED
Rated Input Voltage	24 Vdc
Ambient Air Temp	0 to 50 °C [32 to 122 °F]
Environmental Ratings	IP65F, TYPE 4X/13
Certifications	CE, UL, CSA, KC
Interface	USB, Ethernet



Product Specifications

Part Number to Order	PFXSTW6600WAD	PFXSTW6700WAD
Display Type and Size	12.1" Wide TFT Color LCD	15.6" TFT Color LCD
Display Colors	16 Million colors	16 Million colors
Graphic Display Resolution	1,280 x 800 pixels (WVGA)	1366 x 768 pixels (FWXGA)
Display Area	W261.12 x H163.2mm [W10.28 x H6.43in]	W344.23 x H193.54mm [W13.55 x H7.62in]
Touch Panel Type	Analog Resistive	
Brightness/Contrast	0 to 100	
Programming Memory	64MB (CFast card)	
Backup Memory	NVRAM 320 KB	
Input Voltage	12 to 24 Vdc	
Power Consumption	18.4W max	18.5W max

ST6000 BASIC HMI



Description

Pro-face America has developed the new ST6000 Series Basic HMI. This basic HMI has a sophisticated design that transforms simple machines into a valuable part of your automation solution.

The aluminum front panel provides

The ST6000 series allows visibility to all these devices, using a web browser platform and requires no programming beyond configuring and entering URLs.

Features

- Sophisticated design that transforms simple machines
- Aluminum Front Panel
- Enhanced Cybersecurity
- Enhanced HMI Screen Development with BLUE
- Simple design and interface increase productivity and efficiency
- Seamless connectivity with various devices enhances flexibility and increases value
- 4.3" to 15.6" Wide Display sizes available

Basic HMI – ST6000

Basic HMI Analog
Display Module

General Specifications

Backlight	White LED
Storage Temperature	-20 to 60° C [-4 to 140° F]
Serial Ports	RS-232C, RS-422/485
Environmental Ratings	IP65F, TYPE 4X/13
Certifications	CE, UL, CSA, KC
Interface	Serial, USB, Ethernet



Product Specifications

Part Number to Order	PFXST6200WAD	PFXST6400WAD	PFXST6500WAD
Display Type and Size	4.3" Wide TFT Color LCD	7" Wide TFT Color LCD	10" Wide TFT Color LCD
Display Colors	16 Million Colors	16 Million Colors	16 Million Colors
Graphic Display Resolution	480 x 272 pixels (WQVGA)	800x 480 pixels (WVGA)	1,024 x 600 pixels (WSVGA)
Display Area	W95.04 x H53.86mm [W3.74 x H2.12in]	W154.08 x H85.92mm [W6.066 x H3.382in]	W222.72 x H125.28mm [W8.77 x H4.93in]
Touch Panel Type	Resistive film (analog)		
Brightness Control	16 Levels (Adjusted with touch panel or software)		
Storage Temperature	-20 to 60 °C (-4 to 140°F)		
Allowable Voltage Drop	2 ms or less	5 ms or less	5 ms or less
Input Voltage	24 Vdc		
Power Consumption	6.9W max	9W max	9W max

Basic HMI – ST6000

Basic HMI Analog
Display Module

General Specifications

Backlight	White LED
Storage Temperature	-20 to 60° C [-4 to 140° F]
Serial Ports	RS-232C, RS-422/485
Environmental Ratings	IP65F, TYPE 4X/13
Certifications	CE, UL, CSA, KC
Interface	Serial, USB, Ethernet



Product Specifications

Part Number to Order	PFXST6600WAD	PFXST6700WAD
Display Type and Size	12.1" Wide TFT Color LCD	15.6" TFT Color LCD
Display Colors	16 Million colors	16 Million colors
Graphic Display Resolution	1,280 x 800 pixels (WVGA)	1366 x 768 pixels (FWXGA)
Display Area	W261.12 x H163.2mm [W10.28 x H6.43in]	W344.23 x H193.54mm [W13.55 x H7.62in]
Touch Panel Type	Analog Resistive	
Brightness/Contrast	0 to 100	
Programming Memory	64MB (CFast card)	
Backup Memory	NVRAM 320 KB	
Input Voltage	12 to 24 Vdc	
Power Consumption	9W max	9W max

HMI Accessories

Cables, Modules, Adapters,
Storage media, Fasteners, Gaskets

Cables / Adapters

AGP3000H-ADPCOM-01	Conversion Adapter for interfacing with a GP3000H Cable Connector and External Output terminal block."
CA3-CBL232/5M-01	Cable for RS-232C connection between various hosts and the GP4000 (5m)
CA3-ADPCOM-01	COM 1 Pin conversion adapter on the GP3000
CA3-ADPSEI-01	Adapter for SIEMENS MPI when using Profibus connector and cabling w/ AGP3000.
CA3-ADPTRM-01	Connects output from a GP unit's Serial Interface (D-sub 9 pin socket) directly with an RS-422 terminal block.
CA3-CBL422-01	Cable for RS-422 connection between various hosts and the GP4000 (Plug Type) (5m)
CA3-CBL422/5M-01	Cable for RS-422 connection between various hosts and the GP4000 (Socket Type) (5m)
CA3-CBLA-01	Cable for directly connecting an A Series CPU (5m)
CA3-CBLCBT232-01	Cable for converting a D-Sub 9-pin plug to a D-Sub 25-pin socket (20cm)
CA3-CBLCBT422-01	Connects a standard RS-422 cable (GP Connector,D-Sub 25-pin) to the GP (20cm)
CA3-CBLFX/1M-01	Cable for directly connecting an FX Series CPU (1m)
CA3-CBLFX/5M-01	Cable for directly connecting an FX Series CPU (5m)
CA3-CBLLNKM-01	Cable for directly connecting a Q Series Link Unit (5m)
CA3-CBLMLT-01	Connects a host controller to the GP for multi-link(n:1) communication
CA3-CBLQ-01	Cable for directly connecting a Q Series CPU (5m)
CA3-CBLSYS-01	Cable for directly connecting a SYSMAC Link Unit (5m)
CA3-ISO232-01	Unit for connecting various hosts and the GP4000 by insulating
CA3-ISO485-01	Unit for connecting various hosts and the GP3000 by insulating
CA3-MDCB11	Cable for connecting a 2-port adapter to the GP3000 (5m)
CA3-MPI-PG1-PFE	Connects a host controller to the GP for MPI communication.
CA3-MPI-PGN-PFE	Connects a host controller to the GP for MPI communication.
CA4-ADPONL-01	For COM 2 Termination adapter required for communication through the RS-422/485 connection
CA6-CBLTTY/5M-01	Cable for connecting a PLC S5 series to the GP (5m)
CA7-CBLCVRGB-01	For converting DVI-A to RGB
CA9-USBAMB/5M-01	USB cable for RGB Input Unit touch panel operation (Host-Slave: Mini-B) (5m)
FP-CV02-45	For outputting image signal from host to GP (4.5m)
FP-DV01-100	For outputting image signal from host to GP (10m)
FP-DV01-50	For outputting image signal from host to GP (5m)
GP070-MD11	Interface unit required for simultaneous use of A/QnA/FX Series peripheral devices
GP2000H-AP232	Conversion adapter to connect GP operation data to RS-232C D-Sub and power/DIO terminals.
GP2000H-AP422	Conversion adapter to connect GP operation data to RS-422 and power/DIO terminals.

HMI Accessories

Cables, Modules, Adapters,
Storage media, Fasteners, Gaskets

Cables / Adapters

GP3000-MPI21-PFE	Connects a host controller to the GP for MPI communication (Online adapter is included in the package)
GP3000-MPI21-PFE	Connects a Siemens S7-200 CPU215+, S7-300, S7-400 (3.5m)
GP3000H-CBLH-10M	Heavy-duty type interface cable for communication between the GP and external equipment
GP3000H-CBLHD-10M	Heavy-duty type cable between the GP4000H Conversion Adapter and the GP4000H.
GP3000H-CBLS-10M	Standard type interface cable for communication between the GP and external equipment
GP3000H-CBLS-3M	Standard type interface cable for communication between the GP and external equipment
GP3000H-CBLS-5M	Standard type interface cable for communication between the GP and external equipment
GP3000H-CBLSD-10M	Standard type cable between the GP4000H Conversion Adapter and the GP4000H.
GP3000H-CBLSD-3M	Standard type cable between the GP4000H Conversion Adapter and the GP4000H.
GP3000H-CBLSD-5M	Standard type cable between the GP4000H Conversion Adapter and the GP4000H.
GP3000H-CBLSD232-10M	The cable between the GP2000H Series RS-232C Conversion Adapter and the GP4000H
GP3000H-CBLSD232-3M	The cable between the GP2000H Series RS-232C Conversion Adapter and the GP4000H
GP3000H-CBLSD422-10M	The cable between the GP2000H Series RS-422 Conversion Adapter and the GP4000H
GP3000H-CBLSD422-3M	The cable between the GP2000H Series RS-422 Conversion Adapter and the GP4000H
HMI-CAB-ST52	RS-232C Cable for connection to Allen-Bradley SLC5/03, 5/04, Contrologix, & Compactlogix PLCs (12ft)
HMI-CAB-ST52-30X	RS-232C Cable for connection to Allen-Bradley SLC5/03, 5/04, Contrologix, & Compactlogix PLCs (30ft)
HMI-CAB-ST52-50X	RS-232C Cable for connection to Allen-Bradley SLC5/03, 5/04, Contrologix, & Compactlogix PLCs (50ft)
PFXZCBADTM1	Connects output from a GP unit's Serial Interface (D-sub 9 pin plug) directly with an RS-422 terminal block.
PFXZCBCBCVR41	Cable for converting a D-Sub 9-pin plug to a D-Sub 25-pin socket (20cm)
PFXZCBCBMD1	Connects Mitsubishi PLC directly to the GP4000 (D-sub 9 pin plug) using 2 port adapter II (RS-422) (5m)
PFXZCBCBML1	Connects a host controller directly to the GP4000 (D-sub 9 pin plug) for multi-link (n:1) communication.
PFXZCGEUE1	USB Ethernet conversion adapter easily added Ethernet interface (RJ-45) on HMI via USB
PFXZLMCBJR21	Cable with loose wires at one end for RS-232C connection between various hosts and the LT (5m)
PFXZLMCBJR81	Cable with loose wires at one end for RS-485 connection between various hosts and the LT (5m)
PFXZSPADWM1	Wall mount adapter for Multi-Converter (Multi-Data Box)
PFXZXMADSM31	Cable with hook to install a rear module on a DIN rail connecting rear module to a display module (3m)
PFXZXMADSM51	Cable with hook to install a rear module on a DIN rail connecting rear module to a display module (5m)
ST03-A2B-MPI21-PFE	Connects a host controller to the GP for MPI communication.
ZC9CBA51	Connects the GP directly to the CPU programming port on the Mitsubishi Electric PLC A/ QnA series (5m)
ZC9CBFP21	Connects the GP directly to the CPU port on the Panasonic Electric Works PLC FP series (2m)
ZC9CBFX11	Connect the GP directly to the CPU programming port on the Mitsubishi Electric PLC FX series (1m)

HMI Accessories

Cables, Modules, Adapters,
Storage media, Fasteners, Gaskets

Cables / Adapters

ZC9CBFX51	Connect the GP directly to the CPU programming port on the Mitsubishi Electric PLC FX series (5m)
ZC9CBQ31	Connects the GP directly to the CPU programming port on the Mitsubishi Electric PLC Q series (3m)

Modules / Expansion / FLEX

EXM-DDI8DT	8-point sink-source shared type expansion unit
EXM-DDI16DT	16-point sink-source shared type expansion unit
CA5-PFSALL/EX-01	Expansion unit enables GP in the PROFIBUS network and communication with the PROFIBUS DP master
CA7-CCLALL/EX-01	Expansion unit enables GP in the CC-Link network and communication with the CC-Link master
CA8-CANLT-01	Master unit to connect to a slave unit supporting CANopen
CA9-CANALL/EX-01	Expansion unit enables GP in the CANopen network and communication with the CANopen master
EXM-ALM3LT	2-ch analog input/ 1-ch analog output type expansion unit
EXM-AMI2HT	2-ch analog input type expansion unit
EXM-AMI4LT	4-ch Voltage, Current, Temperature Expansion Unit
EXM-AMM3HT	2-ch analog input/ 1-ch analog output type expansion unit
EXM-AMM6HT	4-ch analog input/ 2-ch analog output expansion unit
EXM-AMO1HT	1-ch analog output type expansion unit
EXM-ARI8LT	8-ch temperature input type expansion unit
EXM-AVO2HT	2-ch analog output type expansion unit
EXM-DDO16TK	16-point transistor output source type expansion unit
EXM-DDO16UK	16-point transistor output sink type expansion unit
EXM-DDO8TT	8-point transistor output source type expansion unit
EXM-DDO8UT	8-point transistor output sink type expansion unit
EXM-DMM24DRF	16-point input sink-source/ 8-point relay output mixed I/O type expansion unit
EXM-DMM8DRT	4-point input sink-source and 4-point relay output type expansion unit (1 common) mixed I/O unit
EXM-DRA16RT	16-point relay output (2 common) type expansion unit
EXM-DRA8RT	8-point relay output (2 common) type expansion unit
FN-AD02AH41	Converts 2-channel analog signals to digital signals
FN-DA02AH41	Converts 2-channel 12-bit digital signals to analog signals and outputs the result

HMI Accessories

Cables, Modules, Adapters,
Storage media, Fasteners, Gaskets

Modules / Expansion / FLEX

FN-X32TS41	I/O unit of 32-point input sink/source sharing type
FN-XY16SC41	Input/output combination I/O unit of 16-point input sink/source and 16-point transistor output Source type
FN-XY16SK41	Input/output combination I/O unit of 16-point input sink/source and 16-point transistor output Sink type
FN-XY32SKS41	Input/output combination I/O unit of 32-point input sink/source and 32-point transistor output Sink type
GP3000-VM01	Video-Mix Unit (262,000 colors, Video Input x 4ch, DVI Input x 1ch, DVI Output x 1ch, VGA/SVGA/XGA)
HTB1C0DM9LP	Slave unit supporting CANopen with 12 digital inputs, 6 relay outputs and 2 transistor source outputs.
PFXZCDEUCA1	SP5000 CANopen Slave COMM unit
PFXZCDEUPF1	PROFIBUS DP Slave/MPI Unit

Storage/ Misc.

CA3-CFCALL/256MB-01	CF Card (256MB)
CA3-CFCALL/512MB-01	CF Card (512MB)
CA3-DFS12-01	Disposable, dirt-resistant sheet for the GP unit's screen (5 sheets/set)
CA3-DFS15-01	Disposable, dirt-resistant sheet for the GP unit's screen (5 sheets/set)
CA3-DFS6-01	Sheet for protecting the front of the display unit from fingerprints, water droplets, powders, dust.(5 pcs/ set)
CA3-USBCB-01	Cable for transferring screen data between a PC (USB Type A) and the GP unit (USB Type A) (2m)
CA4-ATM10-01	Panel cutout adapter for mounting 10.4-inch GP in cutout for GP-2500/2600 series.
CA4-ATM5-01	Panel cutout adapter for mounting a 5.7-inch display unit in cutout for LT Series and GP-37W2B
CA5-DFS10-01	Disposable, dirt-resistant sheet for the GP unit's screen (5 sheets/set)
CA5-USBATM-01	USB Cable clamp for 1 port products to prevent disconnection.
CA5-USBEXT-01	Extension cable for attaching to USB port on front panel (1m)
CA6-CFCALL/1GB-01	CF Card (1GB)
CA6-DFS4-01	Disposable, dirt-resistant sheet for the GP unit screen (5 sheets/set)
CA6-USB232-01	Cable for converting a GP unit's USB interface into a serial interface (RS-232C). (50cm)
CA7-DFS12-01	Disposable, dirt-resistant sheet for the GP unit screen (5 sheets/set)
CA7-TPPEN/ALL-01	5 touch pens for screen operation.
CA8-CFCALL/2GB-01	CF Card (2GB)
CA8-USBATALL-01	USB Cable clamp for 1 port products to prevent disconnection.
CA9-USBATRGB/MB-01	Disconnection prevention clamp for the RGB Input USB (miniB) Cable (2 pcs/set)

HMI Accessories

Cables, Modules, Adapters,
Storage media, Fasteners, Gaskets

Storage / Misc.

FP-US00	Connects a USB printer (TYPE-B) (5m)
GP077-CFAD10	Used for read/write of CF Card data via a PC's PCMCIA slot.
GP077-SDAD10	Adapter for converting the audio output section to the AUX connector to a pin jack
GP2000H-STRAP11	Strap for wearing over the neck.
GP3000-EXDM01	Memory used for expanding GP-Pro EX alarm and character table functions
GP3000H-DFS6-01	Disposable, dirt-resistant sheet for the GP unit's screen. (5 sheets/set) (Hard type)
GP3000H-WMA-01	Bracket for mounting the GP3000H Series unit to a commercially available arm or panel.
HMI-CAB-ETH	Directly connect via Ethernet either the PC to the HMI for programming or the HMI to the PLC (5m)
HMI-CAB-ST001	Connects DB9 COM port with 9 open ended wires for connecting to 3rd party screw terminal devices (5m)
PFXZCBCBCVUSR41	Cable for connecting a GP unit (USB Type A) with an external device (RS-422/RS-485)
PFXZCBDS101	Disposable, dirt-resistant sheet for the GP unit screen (5 sheets/set)
PFXZCBDS61	Disposable, dirt-resistant sheet for the GP unit screen (5 sheets/set)
PFXZCBDS71	Disposable, dirt-resistant sheet for the GP unit screen (5 sheets/set)
PFXZCBDS72	Disposable, dirt-resistant sheet for the GP unit screen (5 sheets/set)
PFXZCBOP101	Disposable, environmental resistant cover for 10.4 inch (1 sheet/set)
PFXZCBOP121	Disposable, environmental resistant cover for 12.1 inch (1 sheet/set)
PFXZCBOP41	Disposable, environmental resistant cover for 3.5 inch (1 sheet/set)
PFXZCBOP61	Disposable, environmental resistant cover for 5.7 inch (1 sheet/set)
PFXZCBOP71	Disposable, environmental resistant cover for 7.0/7.5 inch (1 sheet/set)
PFXZCBSD4GC41	SD Memory Card (4 GB, CLASS4)
PFXZCDAT72	Panel cutout adapter for mounting 7-inch Wide Advanced Display in cutout for GP2400, GP3400, or GP4400.
PFXZCDCNAUX1	AUX connector required in case an external output is used (5 pcs/set)
PFXZCDCVUS1	Front USB cover with fixing screw, corresponding to IP66f, IP67f, Type 1/4X. Indoor use only. (5 pieces/set)
PFXZCDDS102	Disposable, dirt-resistant sheet for the display (5 sheets/set)
PFXZCDDS122	Disposable, dirt-resistant sheet for the display (5 sheets/set)
PFXZCDSCCFA321	CFast Card (32 GB, SLC)
PFXZCDSCCFA322	CFast Card (32GB, MLC), System Card for SP-5B41
PFXZCHAG192	Anti-glare, dirt-resistant sheet for the SP-5800WC's screen (5 sheets/set)
PFXZCHAG152	Anti-glare, dirt-resistant sheet for the SP-5700WC's screen (5 sheets/set)
PFXZCGWG192	Provides dust and moisture resistance when SP-5800WC is installed into a solid panel (1 piece)
PFXZCGWG152	Provides dust and moisture resistance when SP-570WC is installed into a solid panel (1 piece)

HMI Accessories

Cables, Modules, Adapters,
Storage media, Fasteners, Gaskets

Storage / Misc.

PFXZGPF SR10W1	Overlay (Front Sheet) for Flat mount of GP4000 Rear Mount model (Color: White, 1 piece)
PFXZGPF SR12W1	Overlay (Front Sheet) for Flat mount of GP4000 Rear Mount model (Color: White, 1 piece)
PFXZGPF SR6W1	Overlay (Front Sheet) for Flat mount of GP4000 Rear Mount model (Color: White, 1 piece)
PFXZGPF SR7W1	Overlay (Front Sheet) for Flat mount of GP4000 Rear Mount model (Color: White, 1 piece)
PS400-DF00	Disposable, dirt-resistant sheet for the GP unit's screen (5 sheets/set)
ZC9DS31	Disposable, dirt-resistant sheet for the GP unit's screen (5 sheets/set)
ZC9USCBMB1	Cable for transferring screen data between a PC (USB Type A) and the GP unit (USB mini-B) (1.8 m)
ZC9USCL1	USB (Type A) Cable clamp for 1 port products to prevent disconnection (5 clamps/ set)
ZC9USEXMB1	Extension cable that attaches to the USB (mini-B) interface on the front side of the operation panel (1m)

EZ Series

CA5-USBEXT-01	Extension cable attaching USB (Type A) interface to front panel (1m)
PFXZCCA K1	Accessories Kit – Anti-rotation Tee, USB cable clamp to prevent disconnection (USB/B, 1 port), (5 pcs/each) Insert Label for EZ Illuminated Switch (3 pieces/sheet)
PFXZCCA KKB1	Kit: Anti-rotation Tee (5pcs), USB cable clamp to prevent disconnection (USB/mini-B, 1 port, 5pcs) Function Key Label for EZ Numpad (2pcs/sheet)
PFXZCCAT1	2mm spacer to adjust installation panel thickness (for EZ Illuminated Switch), with 22mm circular hole
PFXZCCCVSS1	A protective cover to protect the sensing screen of EZ Fingerprint Recognition Unit (5 pcs/set)
PFXZCCNTSS1	Nut to install EZ Fingerprint Recognition Unit (5 pcs/set)
PFXZCDWGS G1	Provides dust and moisture resistance when EZ Illuminated Switch is installed into a solid panel (1 piece)
PFXZCEATWM1	Attachment mounts the EZ Series Unit on the wall. Please use it when holding the EZ Series in your hands
PFXZGMNT1	Nut for installation to a solid panel (10 pieces/set)
PFXZGMSW1	Socket wrench to tighten and loosen the installation nut (1 piece/set)
XVGUZ02	Cable lock to prevent disconnection of USB cable
ZC9USCBMB1	Cable for connecting from an EZ Tower Light to a Pro-face's interface unit (USB A/mini B) (1.8m)

HMI Replacement Parts

Cables, Modules, Adapters,
Storage media, Fasteners, Gaskets

Fasteners / Gaskets

CA3-ATFALL-01	Used to install the LT into a solid panel. (4 pcs/ set)
CA3-WPG12-01	Provides dust and moisture resistance when GP is installed into a solid panel
CA3-WPG15-01	Provides dust and moisture resistance when GP is installed into a solid panel
CA3-WPG6-01	Provides dust and moisture resistance when LT is installed into a solid panel
CA3-WPG6-01	Provides dust and moisture resistance when GP is installed into a solid panel
CA5-WPG10-01	Provides dust and moisture resistance when GP is installed into a solid panel
CA5-WPG8-01	Provides dust and moisture resistance when GP is installed into a solid panel
GP3000H-WPGADP-01	Provides dust and moisture resistance when GP3000H Conversion Adapter is installed into a solid panel
PFXZCBAF1	Used to install the GP into a solid panel (4 pieces/ set)
PFXZCBWG101	Provides dust and moisture resistance when GP is installed into a solid panel (1 piece)
PFXZCBWG121	Provides dust and moisture resistance when GP is installed into a solid panel (1 piece)
PFXZCBWG41	Provides dust and moisture resistance when GP is installed into a solid panel (1 piece)
PFXZCBWG61	Provides dust and moisture resistance when GP is installed into a solid panel (1 piece)
PFXZCBWG71	Provides dust and moisture resistance when GP is installed into a solid panel (1 piece)
PFXZCDWG101	Provides dust and moisture resistance when this product is installed into a solid panel (1 piece)
PFXZCDWG102	Provides dust and moisture resistance when this product is installed into a solid panel (1 piece)
PFXZCDWG121	Provides dust and moisture resistance when this product is installed into a solid panel (1 piece)
PFXZCDWG122	Provides dust and moisture resistance when this product is installed into a solid panel (1 piece)
PFXZCDWG151	Provides dust and moisture resistance when this product is installed into a solid panel (1 piece)
PFXZCDWG72	Provides dust and moisture resistance when this product is installed into a solid panel (1 piece)
PFXZGPAFRL1	Used to install the GP4000 Rear Mount model into a solid panel (2 pieces/set)
PFXZGPFRM1	Used to install the GP4000 Rear Mount model into a solid panel (2 pieces/set)
PFXZGPWGR1	GP4000 Rear Mount model Installation Gasket (1 piece)
ST400-WP01	Provides dust and moisture resistance when LT is installed into a solid panel
ZC9AF31	Used to install the GP into a solid panel (2 pieces/ set)
ZC9WG31	Provides dust and moisture resistance when GP is installed into a solid panel (1 piece)

HMI Replacement Parts

Cables, Modules, Adapters,
Storage media, Fasteners, Gaskets

Connectors

CA5-AUXCNALL-01	AUX connector for GP3000 series required in case an external output is used. (5 pcs/set)
CA5-DCCNL-01	Connector to connect power supply cables (5 pcs/set)
CA5-DCCNM-01	Connector for attaching power supply to medium-sized units (5 pcs/set)
CA5-DCCNM-01	Connector to connect power supply cables (5 pcs/set)
CA6-DIOCN4-01	Connector attached to the DIO interface. Connects an external I/O device. (5 pcs/ set)
CA6-DIOCNALL-01	Connector attached to the DIO interface. Connects an external I/O device. (5 pcs/set)
CA6-FNCNALL-01	Connector attached to the FLEX NETWORK interface. Connects a FLEX NETWORK comm cable. (5 pcs/set)
CA7-DIOCN5-01	Connector attached to the DIO interface. Connects an external I/O device. (5 pcs/ set)
GLC-DIOCN03	FN-XY32SK41 Connectors (2 pcs/set)
PFXZCBCNDC1	Connector to connect DC power supply cables (Straight type, 5pcs/set)
PFXZCBCNDC2	Right-angle connector to connect DC power supply cables (Angle type, 5pcs/set)
PFXZGMCNDC1	Connector to connect DC power supply cables (5 pcs/set)
PFXZLMCNIO1	I/O connector 15-pin (2 pcs/set) and I/O connector 6-pin (2 pcs/set)
ZC9CMC1	Connector for Serial I/F (1 piece)
ZCACNDCS1	Connector for attaching power supply to 3.4-inch GP units. (Set of 5 connectors)

Storage / Misc.

CA3-BLU12-01 *4	Replacement backlight for main unit (1 pc.)
CA3-BLU15-01 *3	Replacement backlight for main unit (1 pc.)
CA3-BUSCVR-01	Protects the GP unit's rear face connector. (Large size and small size each in one set)
CA5-BLU10T-01 *5	Replacement backlight for main unit (1 pc.)
CA5-USBATL-01	USB Cable clamp to prevent disconnection (5 pcs/ set)
CA6-BLU10T-02 *5	Replacement backlight for main unit (1 pc.)
CA6-EXMCNHE20P-01	Connector for EX module (5 pcs/ set)
CA6-EXMCNRS10P-01	Connector for EX module (5 pcs/ set)
CA6-EXMCNRS11P-01	Connector for EX module (5 pcs/ set)
CA7-FIXEXM-01	Hook for securing three EX modules.
CA7-HTBCNSET-01	13-pin input connector and 16-pin output connector for HTB (each in one set)
CA7-USBAT-01	USB Cable clamp to prevent disconnection (5 pcs/ set)
GP3000H-DUPS-01	5 sheets/set (x 5) for changing image of the function switches.
GP3000H-EMGD-01	Emergency Switch Guard for preventing accidental operation.

HMI Replacement Parts

Cables, Modules, Adapters,
Storage media, Fasteners, Gaskets

Storage / Misc.

GP3000H-HS-01	Strap for handheld operation.
GP3000-RGC201	Video Module (2xRGB IN) for AGP35x0T/36x0T/3750T & GP4521T/4621T
PFXGM4200TP	For LT4000M/GP4000M Series Display Modular type, 3.5-inch
PFXGM4300TP	For LT4000M/GP4000M Series Display Modular type, 5.7-inch
PFXLM4B01DAC	LT4000M Analog model Rear Module, Source Output, DC24V (Main Unit)
PFXLM4B01DAK	LT4000M Analog model Rear Module, Sink Output, DC24V (Main Unit)
PFXLM4B01DDC	LT4000M DIO model Rear Module, Source Output, DC24V (Main Unit)
PFXLM4B01DDK	LT4000M DIO model Rear Module, Sink Output, DC24V (Main Unit)
PFXZCBBT1	Primary battery for memory and time data backup (1 piece)
PFXZCBCLUSA1	Clamp to prevent disconnection of USB cable (1 port, 5 pcs/set)
PFXZCDSCCFA162	CFast Card (16 GB, MLC) for System Card
PFXZCDS1GC61	SD Memory Card (1 GB, SLC, Class 6) for System Card
PFXZGMAK1	Kit – Anti-rotation Tee, USB cable clamp to prevent disconnection (USB Type A, Mini B, for 1 port), 2mm-high spacer to adjust installation panel thickness (1pc/each)
PFXZGMNT1	Nut to install the display module (10 pcs/set)
PFXZGMSW1	Socket wrench to tighten and loosen the display installation nut (1 pc/set)
PFXZXMADSA1	DIN rail installation adapter for rear modules in non-display operation
PS501S-BU00	Replacement backlight for main unit (2 pcs/set)
ZC9USCLMB1	Clamp to prevent disconnection of USB cable (1 port, 5 pcs/set)

EZ Series

PFXZCDWGS1	Provides dust and moisture resistance when EZ Illuminated Switch is installed into a solid panel (1 piece)
PFXZGMNT1	Nut for installation to a solid panel (10 pieces/set)
PFXZGMSW1	Socket wrench to tighten and loosen the installation nut (1 piece/set)
XVGUZ02	Cable lock to prevent disconnection of USB cable

RC6700 Rugged Panel PC

The RC6700 Rugged Panel PC 15" is constructed with completely sealed stainless steel type 4/4X, IP 65/66, NEMA 4/4X enclosure with environmental ratings on the entire system. It supports a wide operating temperature, comes with pre-installed Windows Embedded operating system; and is powered by high-performance and low power consumption Intel® Atom™ processor N2600 1.6 GHz in fanless industrial-grade high-bright LCD flat touch screen panel. It offers Class 1 Div 2, Groups A, B, C, D, CENELEC's ATEX 94/9/EC Zone 2, IEC's IECEx Zone 2, Ex nA, and Ex ic certification which are primarily designed for the volatile and harsh environments of Oil, Gas, and oilfield equipment & services.



General Specifications

Part Number to Order	HAR15PFA03-48018-R01
Display Type and Size	15" diagonal, Active matrix TFT LCD (4:3)
Operating System	Windows® Embedded Standard 7 E
Graphic Display Resolution	1,024 x 768 pixels (XGA)
Processor	Intel® Atom Processor N2600 1.6 GHz
System Memory	4GB DDR3 1333 MHz, up to 4GB
Storage	32GB mSATA Solid State Drive
Touch Panel Type	Analog resistive 5-wire
Serial Port	1x RS-232C (IP65 connector and cable)
Ethernet	1x RJ 45-10/100/1000 Mbps (IP65 connector and cable)
USB	2x USB2.0 (IP65 connector and cable)
Operating Temperature	-20 to 50 °C (-4 to 122 °F)
Ingress Protection	NEMA4 IP65 (360° protection)
Humidity	30 to 90% RH (non-condensing)
Oper Shock Protection	15G, 11ms duration
Oper Vibration Protection	5 Hz ~ 500 Hz/ 1 Grms/ 3 Axis
Packing Vibration Protection	5 Hz ~ 500 Hz/ 2.16 Grms/ 3 Axis
Rated Input Voltage	12Vdc, 9v~36vdc
Power Consumption	25W (typ.) (max. backlight & high CPU loading)
Dimensions	W396 x H310 x D49 mm

PS5000 Series Industrial PC

Description

The PS5000 Industrial PC Series is innovative and flexible, offering high connectivity, reliability, and design. Our built-to-order lineup allows customers to choose the product that best suits their application needs.

This iPC offer includes Node Box PCs with Intel Core i7, ATOM, and Celeron CPUs which can be used with a modular & flexible Panel PC configuration with 12", 15", 19" or 22" display screens.



Features

Modular: Combine the Box type and the Display in a range of sizes from 15 to the ultra-large 22 inches. Flexibly change the functions and sizes.

Slim: Panel-integrated type - drastically slimmer profile with less wasted space and high performance retained featuring optimized design for equipment that requires space-saving. Featuring an optimized industrial design for a 66% cut in the required depth. No fan means a smaller operation panel with no need to worry about exhaust heat, resulting in less cost to you.

Box: Stationary box type suitable for an environment and equipment that does not require operation and display. Both landscape and portrait placement available. Using Pro-face Remote HMI makes monitoring possible only when needed.

Powerful: A generous helping of the latest technology amounts to a surprising edge in performance. This means more power for equipment requiring high-speed equipment with different usability via HMI and PC.

Smart: Intuitive gestures for zooming and switching screens similar to popular tablets and smartphones for even smoother operation. Scroll, swipe, pinch, two-point touch, etc.

Built to order: Choose a configuration that best suits your budget and purpose. Configuration requirements can be selected online, eliminating the need to look through models to find the best match.

Remote solutions: Includes a proprietary tablet /smartphone app designed for use in industrial settings. The app offers a revolutionary debugging and remote monitoring experience.

PS5000 Slim Panel PC

The PS5000 Series is the newest line up in the Pro-face Industrial PC family. The three display sizes, 10", 15" and 19" offer a slim design, and low reactivity glass that creates less glare and higher contrast. This powerful IPC features a Core™ i3-4010U or Atom E3827 1.7 GHz processor, creating a powerful system for any production floor. Its aluminum housing adds to the PC's durability, while its multiple I/O ports lend to its flexibility. These units provide more robust storage options, as well as a bright and crisp TFT color display.


[Configure PS5000 Core i3](#)
[Find Distributor](#)
[Configure PS5000 Atom](#)

General Specifications

Models	PS5501W	PS5701W	PS5711W
Display Type and Size	10.1" Color LCD	15.6" (wide 16:9) Color LCD	15.6" (wide 16:9) Color LCD
CPU	Atom E3827, 1.75 GHz	Atom E3827, 1.75 GHz	Core i3-4010U 1.7GHz
Operating System	Windows® 7 Ultimate (64 bit) MUI, Windows® Embedded Standard 7 Premium (64 bit) MUI, Windows® Embedded 8.1 Industry (64 bit) MUI		
Graphic Display Resolution	1,280 x 800 pixels WXGA TFT	1,366 x 768 pixels FWXGA TFT	1,366 x 768 pixels FWXGA TFT
Touch Panel Type	Multi-touch (5 point simultaneous touch) projected capacitive		
Serial Port (COM)	RS-232C x1, RS-232C / 422 / 485 (D-Sub 9-pin plug) x1		
Ethernet	10/100/1000 Mbit/s (RJ-45 Modular Jack) x2		
USB	USB 3.0 x1, USB 2.0 x1 (Type A)	USB 3.0 x1, USB 2.0 x1 (Type A)	USB 3.0 x2 (Type A)
Backlight	LED		
Storage Temperature	- 20 to 60° C [- 4 to 140° F]		
Surrounding Air Temperature	When using SSD / CFast running: 0 to 55° C [32 to 131° F] When using HDD running: 0 to 45° C [32 to 113° F]		
Environmental Ratings	IP66 Front Panel		
Rated Input Voltage	DC Power Model: 24 Vdc 120 % When using AC power supply unit: 100 to 240 Vac *1		
Power Consumption	12 W (max 24 W)	18 W (max 60 W)	18 W (max 60 W)
External Dimensions	W283.1 x H202.3 x D61.3 mm [W11.15 x H7.96 x D2.41 in.]	W419.7 x H269.0 x D61.9 mm [W16.52 x H10.59 x D2.44 in.]	W419.7 x H269.0 x D56.7 mm [W16.52 x H10.59 x D2.23 in.]
Panel Cutout Dimensions	W274.6 x H193.8 mm [W10.81 x H7.63 in.]	W412.4 x H261.7 mm [W16.24 x H10.30 in.]	W412.4 x H261.7 mm [W16.24 x H10.30 in.]

PS5000 Slim Panel PC



PS-5811W 19"



PS-5821W 19" - Enclosed

General Specifications

Models	PS5811W	PS5821W
Display Type and Size	18.5" (wide 16:9) Color LCD	18.5" (wide 16:9) Color LCD Enclosed
CPU	Core i3-4010U 1.7GHz	Core i3-4010U 1.7GHz
Operating System	Windows® 7 Ultimate (64 bit) MUI, Windows® Embedded Standard 7 Premium (64 bit) MUI, Windows® Embedded 8.1 Industry (64 bit) MUI	
Graphic Display Resolution	1,366 x 768 pixels FWXGA TFT	
Touch Panel Type	Multi-touch (5 point simultaneous touch) projected capacitive	
Serial Port (COM)	RS-232C x1, RS-232C / 422 / 485 (D-Sub 9-pin plug) x1	RS-232C (M12 A-coding, 8-pin plug) x1
Ethernet	10/100/1000 Mbit/s (RJ-45 Modular Jack) x2	10/100/1000 Mbit/s (M12 A-coding, 8-pin socket) x2
USB	USB 3.0 x1, USB 2.0 x1 (Type A)	USB 2.0 x1 (M12 A-coding, 8-pin socket)
Backlight	LED	
Storage Temperature	- 20 to 60 °C (- 4 to 140 °F)	
Surrounding Air Temperature	When using SSD / CFast running: 0 to 55°C [32 to 131°F] When using HDD running: 0 to 45°C [32 to 113°F]	
Environmental Ratings	IP66 Front Panel	IP66 All Around
Rated Input Voltage	DC Power Model: 24 Vdc 120 % When using AC power supply unit: 100 to 240 Vac	DC Power Model: 24 Vdc 120 % (M12 A-coding, 8-pin female)
Power Consumption	28 W (max 60 W)	35 W (max 60 W)
External Dimensions	See Datasheets for proper external dimensions with different display and box options.	
Panel Cutout Dimensions	W479.3 x H300.3 mm [W18.87 x H11.82 in.]	W479.3 x H300.3 mm [W18.87 x H11.82 in.]

PS5000 Box PC

PS5000 Series is the highest performance industrial PC, offering high connectivity, reliability, and design. Our built-to-order lineup allows customers to choose the product that best suits their needs. Our Node Box PCs with Intel Core i7, Atom, and Celeron CPUs, can be easily paired with a modular & flexible 12", 15", 19" or 22" display screen—flexibly change the functions and sizes.

Also available as a stand-alone, the stationary box type is suitable for an environment and equipment that does not need operation and display. Both landscape and portrait mounting available.



[Configure PS5000 Modular](#)

[Find Distributor](#)



General Specifications

Models	PS500XB		
CPU	Celeron 2980U 1.6 GHz	Core i7-4650U 1.7 GHz	Atom E3930 1.3 GH
Main Memory	4 GB or 8 GB, DDR3L 1600 MHz, SO-DIM SDRAM 8 GB or 16 GB, DDR3L 1600 MHz, SO-DIM SDRAM		
Operating System	Windows® 7 Ultimate (64 bit) MUI, Windows® Embedded Standard 7 Premium (64 bit) MUI, Windows® Embedded 8.1 Industry (64 bit) MUI, Windows® 10		
Serial ATA	HDD or SSD x2, CFast x1, mSATA x1		
Serial Port (COM)	RS-232C / 422 / 485 (D-Sub 9-pin plug) x1		
Ethernet	10/100/1000 Mbit/s (RJ-45 Modular Jack) x2		
USB	USB 3.0 x2, USB 2.0 x2 (Type A)		
Storage Temperature	- 20 to 60 °C (- 4 to 140 °F)		
Surrounding Air Temperature	When using SSD / CFast running: 0 to 55°C [32 to 131°F] When using HDD running: 0 to 45°C [32 to 113°F]		
Environmental Ratings	IP66 Front Panel		
Rated Input Voltage	DC Power Model: 24 Vdc 120 % When using AC power supply unit: 100 to 240 Vac		
Power Consumption	18 W (Max. 40 W)		20W

PS5000 Modular Display + Box PC



General Specifications

Models	PS5800W	PS5900W
Display Type and Size	8.5" (wide 16:9) Color LCD	21.5" (wide 16:9) Color LCD
CPU	Celeron 2980U 1.6GHz Core i7-4650U 1.7 GHz Atom E3930 1.3 GH	
Main Memory	8 GB or 16 GB, DDR3L 1600 MHz, SO-DIM SDRAM (Core i7) 4 GB or 8 GB, DDR3L 1600 MHz, SO-DIM SDRAM (Celeron and Atom)	
Operating System	Windows® 7 Ultimate (64 bit) MUI, Windows® Embedded Standard 7 Premium (64 bit) MUI, Windows® Embedded 8.1 Industry (64 bit) MUI	
Graphic Display Resolution	1,366 x 768 px FWXGA TFT	1,980 x 1,080 px Full HD TFT
Touch Panel Type	Multi-touch (5 point simultaneous touch) projected capacitive	
Serial Port (COM)	RS-232C / 422 / 485 (D-Sub 9-pin plug) x1	
Ethernet	10/100/1000 Mbit/s (RJ-45 Modular Jack) x2	
Backlight	LED Lifespan > 50,000 h @ 25° C [77° F]	
Storage Temperature	– 30 to 70° C [– 22 to 158° F]	
Surrounding Air Temp	When using SSD / CFast running: 0 to 55° C [32 to 131° F], When using PCI/PCle: 0 to 45° C [32 to 113° F] When using HDD running: 0 to 45° C [32 to 113° F], When using 2x mPCI + Display module: 0 to 45° C [32 to 113° F]	
Environmental Ratings	IP66 Front Panel / Class 1 Div 2	
Rated Input Voltage	DC Power Model: 24 Vdc 120 % When using AC power supply unit: 100 to 240 Vac	
Power Consumption	Core i7 28.4 W (max 48.1 W) Celeron 27.9 W (max 43.1 W) Atom 21.1 W (max 48.28 W)	30.5 W (max 50.7 W) 29.9 W (max 45.2 W) 22.2 W (max 49.85 W)
External Dimensions	See Datasheets for proper external dimensions with different display and box options.	
Panel Cutout Dimensions	W479.3 x H300.3 mm [W18.87 x H11.82 in.]	W550.3 x H341.8 mm [W21.66 x H13.45 in.]

PS5000 Modular Display + Box PC



General Specifications

Models	PS5600T	PS5600W	PS5700T	PS5700W
Display Type and Size	12" Color LCD	12.1" (wide 16:9) Color LCD	15" Color LCD	15.6" (wide 16:9) Color LCD
CPU	Celeron 2980U 1.6GHz Core i7-4650U 1.7 GHz Atom E3930 1.3 GH			
Main Memory	8 GB or 16 GB, DDR3L 1600 MHz, SO-DIM SDRAM (Core i7) 4 GB or 8 GB, DDR3L 1600 MHz, SO-DIM SDRAM (Celeron or Atom)			
Operating System	Windows® 7 Ultimate (64 bit) MUI, Windows® Embedded Standard 7 Premium (64 bit) MUI, Windows® Embedded 8.1 Industry (64 bit) MUI, Windows® 10			
Graphic Display Resolution	1,024 x 768 px XGA TFT	1,280 x 800 px WXGA TFT	1,366 x 768 px FWXGA TFT	1,980 x 1,080 px Full HD TFT
Touch Panel Type	Resistive single touch	Multi-touch capacitive	Resistive single touch	Multi-touch capacitive
Serial Port (COM)	RS-232C / 422 / 485 (D-Sub 9-pin plug) x1			
Ethernet	10/100/1000 Mbit/s (RJ-45 Modular Jack) x2			
USB	3.0 x2, 2.0 x2, 2.0 x1 (front) (Type A)		3.0 x2, 2.0 x2 (Type A)	
Backlight	LED Lifespan > 50,000 h @ 25° C [77° F]			
Storage Temperature	– 30 to 70° C [– 22 to 158° F]			
Surrounding Air Temperature	When using SSD / CFast running: 0 to 55°C [32 to 131°F], When using PCI/PCIe: 0 to 45°C [32 to 113°F] When using HDD running: 0 to 45°C [32 to 113°F], When using 2x mPCI + Display module: 0 to 45°C [32 to 113°F]			
Environmental Ratings	IP66 Front Panel / Class 1 Div 2			
Rated Input Voltage	DC Power Model: 24 Vdc 120 % When using AC power supply unit: 100 to 240 Vac			
Power Consumption	Core i7 43.6 W (max 57.87 W) Celeron 38.6 W (max 52.87 W) Atom 17.1 W (max 42.87 W)	42.6 W (max 58.65 W) 37.4 W (max 53.65 W) 16.5 (max 43.65)	25.9 W (max 44.9 W) 25.5 W (max 39.9 W) 18.3 W (max 38.04 W)	27.1 W (max 46.1 W) 26.6 W (max 40.9 W) 20.2 W (max 39.5 W)
External Dimensions	See Datasheets for proper external dimensions with different display and box options.			
Panel Cutout Dimensions	W301.5 x H227.5 mm [W11.87x H8.96 in.]	W310 x H221 mm [W12.2 x H 8.7 in.]	W383.5 x H282.5 mm [W15.09 x H11.12 in.]	W412.4 x H261.7 mm [W16.24 x H10.30 in.]

FP5000 – Flat Panel Display



Description

Sharing the panel cut out dimension with the FP3000 Series, the FP5000 Series is the natural choice for upgrading your system. Automatic resolution and brightness adjustment eases upgrade and increase operation efficiency.

The FP5000 Series employs an analog resistive multi-touch touch panel that allows multi touch gestures even when wearing work gloves. Gesture operation greatly prevents unintended operation and the multi-touch panel film prevents display glass fragments from contaminating the processed goods, essential in the food and beverage industry.

In addition to cutting-edge functions such as gesture operation and a brightness sensor, the FP5000 Series provides a high level of environmental resistance with features like a maximum ambient operating temperature rating of 60°C and an IP67F protection rating that allows it to withstand washing with a high-pressure cleaner during hygienic maintenance of equipment.

Features

- Automatic resolution adjustment
- Supports operating systems from Windows XP to Windows 8.1
- 12Vdc battery operated devices and equipment
- Straight forward connectivity
- Front USB port for easy data export

Simple configuration of display and PC

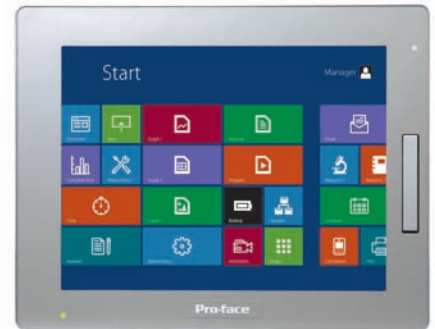
- Easy installation with integrated mounting bracket and anti-drop lock
- Class 1 Div 2 Haz Loc Certification

FP5000 – Flat Panel Display

Touch Screen DVI I/F Compatible
Industrial Flat Panel Monitors

General Specifications

Backlight	White LED
Storage Temperature	-20 to 60 °C (-4 to 140 °F)
Ambient Operating Temp	0 to 60 °C (32 to 140 °F)
Environmental Ratings	w/ factory-installed front USB cover: IP65F, IP67F, TYPE 1, w/ front USB cover as an option: IP66F, IP67F TYPE 1, TYPE 4X/13
Certifications	CE, UL Listed, RoHS, Class 1 Div 2



Product Specifications

Part Number to Order	PFXFP5600TPD	PFXFP5700TPD
Display Type and Size	12.1" TFT Color LCD	15" TFT Color LCD
Display Colors	16 million colors	16 million colors
Graphic Display Resolution	1,024 x 768 pixels (XGA)	1,024 x 768 pixels (XGA)
Display Area	W245.76 x H184.32 mm (W9.68 x H7.26 in.)	W304.1 x H228.1 mm (W11.97 x H8.98 in.)
Touch Panel Type	Resistive film (analog, multi-touch)	Resistive film (analog, multi-touch)
Brightness Controls	0 to 100	0 to 100
USB (1)	USB2.0 (TYPE-B)	USB2.0 (TYPE-B)
USB (2)	USB2.0 (TYPE-A)	USB2.0 (TYPE-A)
Video Input Interface	DVI-D 24 pin (socket)	DVI-D 24 pin (socket)
Rated Input Voltage	12 to 24Vdc	12 to 24Vdc
Power Consumption	17 W (max.)	21 W (max.)
Panel Cutout Dimensions	W301.5 x H227.5 mm (W11.87 x H8.96 in.)	W383.5 x H282.5 mm (W15.1 x H11.12 in.)
External Dimensions	W315 x H241 x D67 mm (W12.4 x H9.49 x D2.64 in.)	W397 x H296 x D67 mm (W15.6 x H11.7 x D2.64 in.)

IPC Accessories

Cables, Modules, Adapters,
Storage Media, Fasteners, Gaskets

FP5000

PFXZCBCNDC2	Right-angle connector to connect DC power supply cables (5 pcs/set) (FP5000)
PFXZCDWG121	Provides dust and moisture resistance when this product is installed into a solid panel (1 piece)
PFXZCDWG151	Provides dust and moisture resistance when this product is installed into a solid panel (1 piece)
PFXZFP5000USCLB1	Clamp to prevent disconnection of USB cable (USB/Type B, 1 port, 5 clamps/set)
PFXZCDOP121	Environmental resistant cover for 12-inch display (1 piece)
PFXZCDOP151	Environmental resistant cover for 15-inch display (1 piece)

PS5000 Slim Panel PCs

PFXZPPDSP152	Screen Protection Sheet for W15" (5 pcs)
PFXZPPDSP192	Screen Protection Sheet for W19" (5 pcs)
PFXZPPDSP102	Screen Protection Sheet for W10" (5 pcs)
PFXZPPWG152	Gasket for W15" (1 pcs)
PFXZPPWG192	Gasket for W19" (1 pcs)
PFXZPPWG102	Gasket for W10" (1 pcs)
PFXZPBCNDC2	DC Power Supply Connector (5 pcs)
PFXZPPAF12P2	Installation fastener
PFXZPSPUAC3	AC power supply unit for PS-5000 Slim Panel PC Core i3
PFXZPSCNM122	M12 Connectors (for Power, COM, LAN x2, USB) for 19"W Enclosed
SPC-1840WP-MCKE	M12 Cable Set for 19"W Enclosed
PFXZPSPUAC2	AC Power module for Slim Panel Atom (with straight 3 cables)
PFXZPSADSSD2	HDD Adapter for Slim Panel PC Atom
PFXZPSADVS102	VESA mounting kit for Slim Panel W10" Atom
PFXZPSADVS152	VESA mounting kit for Slim Panel W15" Atom

IPC Accessories

Cables, Modules, Adapters,
Storage Media, Fasteners, Gaskets

PS5000 Modular PCs

CA3-DFS12-01	Screen Protection Sheet for 12"(4:3) (5 pcs)
CA3-DFS15-01	Screen Protection Sheet for 15"(4:3) (5 pcs)
PFXZPPDSP122	Screen Protection Sheet for W12" (5 pcs)
PFXZPPDSP152	Screen Protection Sheet for W15" (5 pcs)
PFXZPPDSP192	Screen Protection Sheet for W19" (5 pcs)
PFXZPPDSP222	Screen Protection Sheet for W22" (5 pcs)
PFXZPPWG153	Gasket for W15" (4:3) (1 pcs)
PFXZPPWG122	Gasket for W12" (1 pcs)
PFXZPPWG123	Gasket for 12" (4:3) (1 pcs)
PFXZPPWG152	Gasket for W15" (1 pcs)
PFXZPPWG192	Gasket for W19" (1 pcs)
PFXZPPWG222	Gasket for W22" (1 pcs)
PFXZPBADHDD2	Adapter for HDD/SSD for Modular BOX
PFXZPBADDR2	PS5000 DIN Rail adapter for PS5001 Atom
PFXZPEADHDD2	PS5000 Dish adapter for Optimized (Expandable)
PFXZPPDMPRX2	PS5000 Receiver for Display Adapter
PFXZPPDMPTX2	PS5000 Transmitter for Display Adapter
PFXZPP12ADS2	PS5000 VESA mounting kit for W12"/12"
PFXZPBADV02	VESA mounting kit for Modular Panel PC 0 slot
PFXZPBADV22	VESA mounting kit for Modular Panel PC 2 slots
PFXZPBIUFAN2	FAN kit for Modular BOX
PFXZPBFTFAN2	FAN filter (5 pcs)
PFXZPBUAC2	AC Power module for Modular BOX (with straight 3 cables)
PFXZPBCNDC2	DC Power Supply Connector (5 pcs)
PFXZPPAF12P2	Installation fastener for Displays
PFXZPBADCVDPDV2	DP-DVI converter
PFXZPBCBDPDV32	DP-DVI cable 3m
PFXZPBEUUPB2	UPS Battery
PFXZPBCBUP32	UPS 3m cable (PW & COM)