



EcoStruxure Augmented Operator Advisor

EcoStruxure™ Augmented Operator Advisor

Augmented reality for instant diagnosis, contactless maintenance, increased efficiency, and lower costs

www.se.com

Life Is On

Schneider
Electric



Harmony

Discover **Harmony**

Advanced operator interface and industrial relays

Harmony operator interface and industrial relays enhance operational efficiency and equipment availability across industrial and building applications. **Harmony** includes intelligent connected products and edge terminals that visualize, gather and process data, enabling informed operator decisions

Explore our offer

- **Harmony** Push Buttons and Switches
- **Harmony** HMI Operator Terminals, IPC and EdgeBox
- **Harmony** Signaling Devices
- **Harmony** Electrical Relays
- **Harmony** Safety

Life Is On

Schneider
Electric

Quick access to product information

Get technical information about your product

References

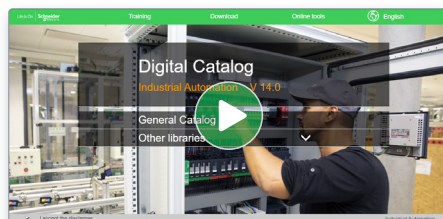
Modicon TM3
I/O expansion modules for Modicon controllers
Analog I/O modules

References	Number and type of channels	Input range	Output range	Resolution	Appl. terminal internal (pins)	Reference	Weight (kg)
2 voltage/current inputs	2	-15...+15 VDC 0...25 mA A, 25 mA	15 VDC or 15 mA A, 25 mA	16 bits or 10 bits + sign	16/18	TM3AI2H	0.110
4 voltage/current inputs	4	-15...+15 VDC 0...25 mA A, 25 mA	15 VDC or 15 mA A, 25 mA	16 bits or 10 bits + sign	16/18	TM3AI4H	0.110
4 voltage/current or temperature inputs	4	-15...+15 VDC 0...25 mA A, 25 mA	15 VDC or 15 mA A, 25 mA	16 bits or 10 bits + sign	16/18	TM3AI4H	0.110
4 differential temperature inputs	4	Thermopiles (I, II, A, B, S, T, N, E, C) RTDs (Pt100, Ni1000, Pt1000, Pt10000) -15...+15 VDC 0...25 mA A, 25 mA	15 VDC or 15 mA A, 25 mA	16 bits or 10 bits + sign	16/18	TM3AI4H	0.110
2 voltage/current inputs	2	-15...+15 VDC 0...25 mA A, 25 mA	15 VDC or 15 mA A, 25 mA	16 bits or 10 bits + sign	16/18	TM3AI2H	0.110

Each commercial reference presented in a catalog contains a hyperlink. Click on it to obtain the technical information of the product:

- Characteristics, Dimensions and drawings, Mounting and clearance, Connections and schemas, Performance curves
- Product image, Instruction sheet, User guide, Product certifications, End of life manual

Find your catalog



- > With just 3 clicks, you can access the Industrial Automation and Control catalogs, in both English and French
- > Consult digital automation catalogs at [Digi-Cat Online](#)

- Up-to-date catalogs
- Embedded product selectors, 360° pictures
- Optimized search by commercial references

Select your training



- > Find the right [Training](#) for your needs on our Global website
- > Locate the training center with the selector tool, using this [link](#)

Life Is On

Schneider
Electric

General contents

EcoStruxure™ Augmented Operator Advisor

- **General presentation**
 - Reduce downtime [page 2](#)
 - Speed-up operation and maintenance..... [page 3](#)
 - Fewer human errors [page 3](#)
- **Presentation**..... [page 4](#)
- **Architecture** [page 5](#)
- **References** [page 7](#)
- **Product reference index**..... [page 10](#)

EcoStruxure Augmented Operator Advisor

Augmented reality for instant diagnosis, contactless maintenance, increased efficiency, and lower costs

Solution for industrial augmented reality applications



EcoStruxure Augmented Operator Advisor

EcoStruxure Augmented Operator Advisor puts real-time information at your fingertips, whenever and wherever it is needed. The custom application improves operational efficiency with augmented reality, enabling operators to superimpose current data and virtual objects onto a cabinet, machine, or plant. This software combines contextual and local dynamic information for mobile users, enabling them to experience a fusion of the physical, real-life environment with virtual objects.



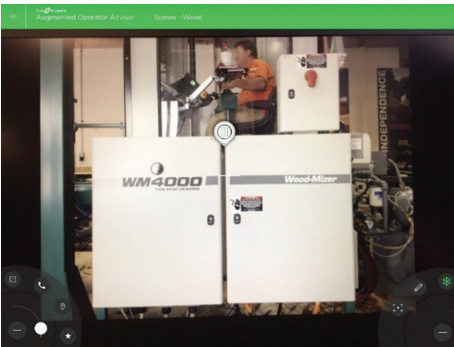
EcoStruxure™ Architecture



Reduce machine downtime

Reduce downtime

EcoStruxure Augmented Operator Advisor reduces downtime by opening electrical cabinet doors virtually and diagnosing the device status instantly in real-time without the need for lockout or electrical qualifications.



Closed electrical cabinet



Virtually-open electrical cabinet

+ Real-time data through augmented reality

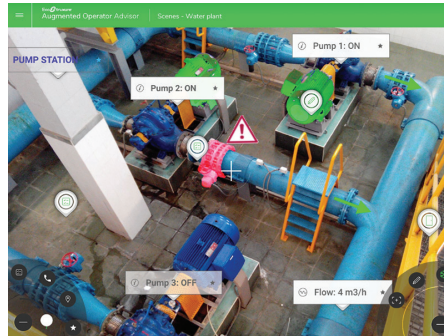
Augmented reality for instant diagnosis, contactless maintenance, increased efficiency, and lower costs



Decrease
search time
information

Speed-up operation and maintenance

EcoStruxure Augmented Operator Advisor speeds up the efficiency of operations and maintenance by offering immediate access to relevant information in the field like real-time data, machine history, user manuals, instructions, diagrams, etc.



Overall view of the industrial site



Outside the industrial site



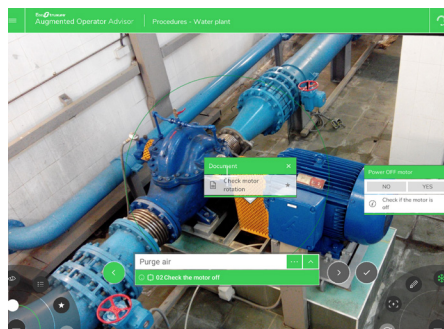
Guided and
facilitated
interventions

Fewer human errors

EcoStruxure Augmented Operator Advisor enables technicians to locate the right equipment and guides them step-by-step to complete the procedures.



Standard operating procedure



Procedure augmented with images/video



[EcoStruxure Augmented Operator Advisor](#)
[Click to view video \(1 min 10 sec\)](#)

+ Instant diagnosis and contactless maintenance

EcoStruxure Augmented Operator Advisor

Augmented reality for instant diagnosis, contactless maintenance, increased efficiency, and lower costs



EcoStruxure Augmented Operator Advisor



EcoStruxure Augmented Operator Advisor App interface

Presentation

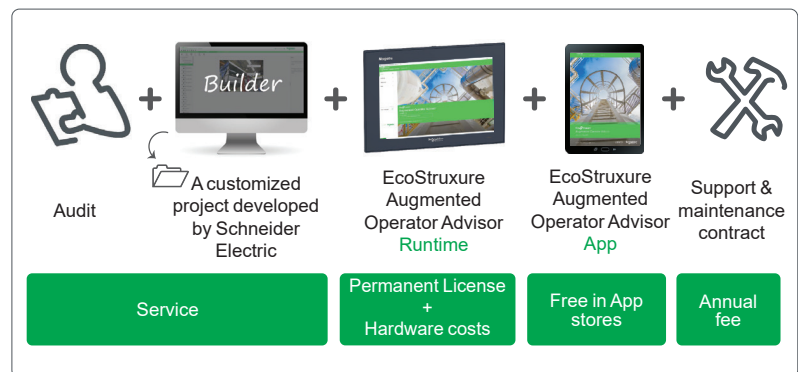
EcoStruxure Augmented Operator Advisor uses augmented reality technology to optimize the operation and maintenance of industrial sites and equipment.

It works as follows:

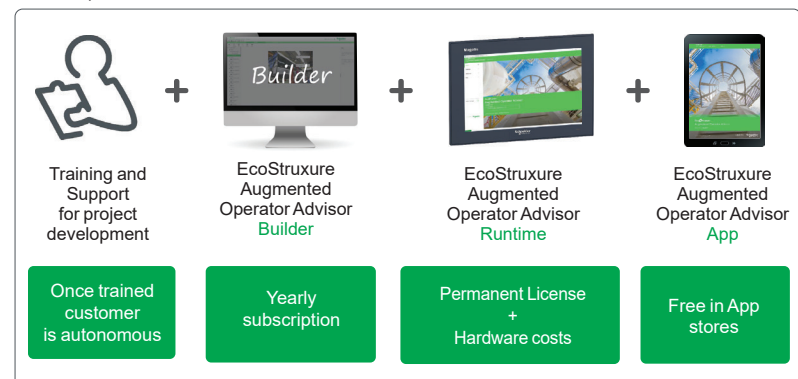
- 1 The advisor takes photos of the machines or electrical cabinet of the site and creates a project with the Builder This Builder is an online software tool allowing customers to create custom projects for the EcoStruxure Augmented Operator app run on a mobile device.
- 2 The advisor further adds point of interests, documents, videos and variables which will be displayed on the mobile device.
- 3 When the operator points a mobile device camera at the site or the monitored equipment, the EcoStruxure Augmented Operator Advisor App uses special image comparison techniques to match the visible scene in the field of view of the mobile device camera with previously stored photos of the same scene.
- 4 The Advisor then overlays points of interest markers on the live scene visible on the mobile device.
- 5 Now when the operator taps the point of interest (POI) markers, a wide variety of information such as process variables, documents, Web pages, videos are displayed.

EcoStruxure Augmented Operator Advisor is delivered in two business models:

- Project mode where customized projects are developed in-house and delivered to the customers end users.



- Do-it-yourself mode where projects are developed by the customers (Machine builders) themselves.

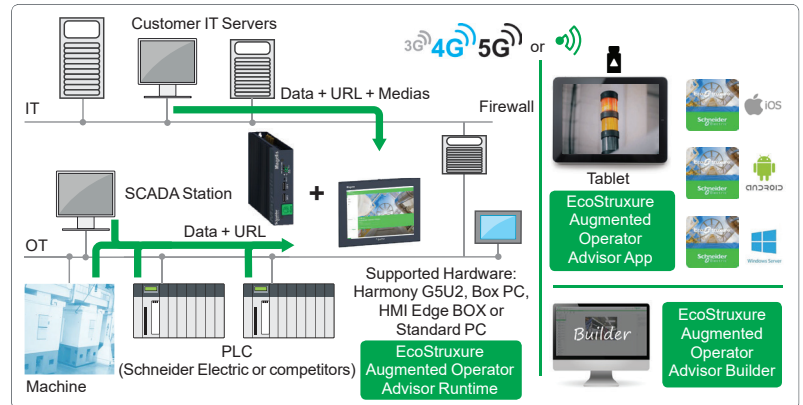


EcoStruxure Augmented Operator Advisor

Augmented reality for instant diagnosis, contactless maintenance, increased efficiency, and lower costs

Architecture

EcoStruxure Augmented Operator Advisor is made up of the following components:



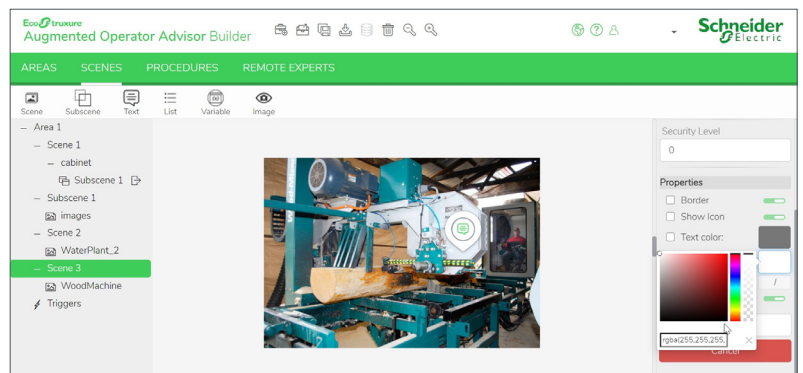
EcoStruxure Augmented Operator Advisor Architecture

■ EcoStruxure Augmented Operator Advisor Builder:

The EcoStruxure Augmented Operator Advisor Builder is available as a Web-based application where the software is accessed and used over the internet. The EcoStruxure Augmented Operator Advisor Builder can also be available off line not requiring an internet connection with a specific installable version. It is used to create projects, where the user can:

- organize and structure the areas, scenes, subscenes, and points of interest in a project
- create and position the points of interest on photographs
- define what happens when the operator taps the point of interest
- build procedures (1) to explain a set of tasks the operator must carry out
- define dynamic URLs depending on the current scene which can be reused to define multiples physical scenes

The built project must be uploaded to the device where the EcoStruxure Augmented Operator Advisor Runtime software is installed.



EcoStruxure Augmented Operator Advisor Builder

(1) Procedures are only available with particular license types.

Note: To view real-time values of process variables produced by the equipment being monitored, Node-RED or EcoStruxure Operator Terminal Expert applications should be installed.

EcoStruxure Augmented Operator Advisor

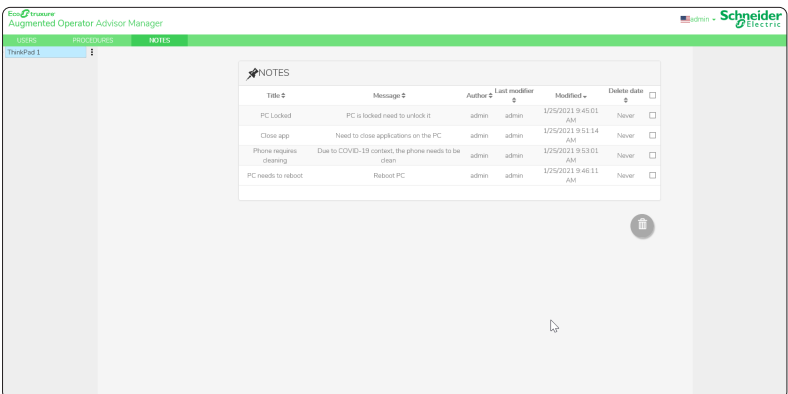
Augmented reality for instant diagnosis, contactless maintenance, increased efficiency, and lower costs

Architecture (continued)

■ EcoStruxure Augmented Operator Advisor Runtime software (1):

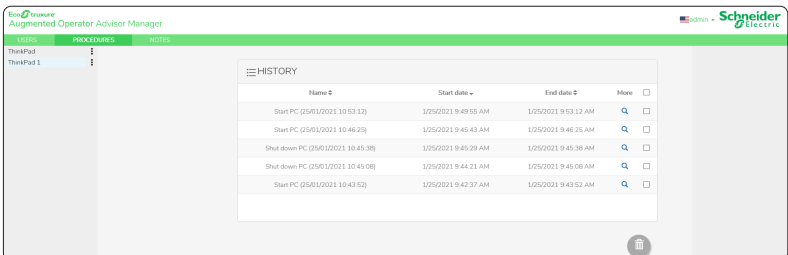
This is a server-based Windows software installed on a Harmony (2) or a standard Windows PC to execute the projects. It gathers together all the required information and sends it to the mobile device to be displayed in the points of interest by the EcoStruxure Augmented Operator Advisor App. It also manages the database containing the photographs of scenes and equipment of the uploaded project.

□ With Runtime export of notes, you can see the list of all notes created by the operators in the App. Operators create their own notes in scenes or sub-scenes when running the App on their mobile device and this information can be used to make improvements to the project. The export of notes to a .CSV file allows them to be archived and used as part of a wider system.



Title	Message	Author	Last modified	Modified	Delete date
PC Locked	PC is locked need to unlock it	admin	admin	1/25/2021 9:45:01 AM	Never
Close app	Need to close applications on the PC	admin	admin	1/25/2021 9:51:14 AM	Never
Phone requires cleaning	Due to COVID-19 context, the phone needs to be clean	admin	admin	1/25/2021 9:53:01 AM	Never
PC needs to reboot	Reboot PC	admin	admin	1/25/2021 9:46:11 AM	Never

□ With Runtime Procedure History, you can see a report of all procedures followed by the operators in the App. The details like name and version of the project, date and time when the procedures were followed, name of the user who followed the procedure and the individual steps taken can be seen. The export of procedure history to a .CSV file allows them to be archived and used as part of a wider system.



Name	Start date	End date	More
Start PC (2561/2021 10:53:12)	1/25/2021 9:49:55 AM	1/25/2021 9:53:12 AM	More
Start PC (2561/2021 10:46:25)	1/25/2021 9:45:43 AM	1/25/2021 9:46:25 AM	More
Shut down PC (2561/2021 10:45:38)	1/25/2021 9:45:29 AM	1/25/2021 9:45:38 AM	More
Shut down PC (2561/2021 10:45:08)	1/25/2021 9:44:21 AM	1/25/2021 9:45:08 AM	More
Start PC (2561/2021 10:43:52)	1/25/2021 9:42:37 AM	1/25/2021 9:43:52 AM	More

(1) Both EcoStruxure Augmented Operator Advisor App and EcoStruxure Augmented Operator Advisor Runtime should be connected to the same WiFi network or 3G/4G/5G mobile network to be able to communicate with each other.

(2) Harmony HMIG5U2 Open Box PC or Harmony iPC.

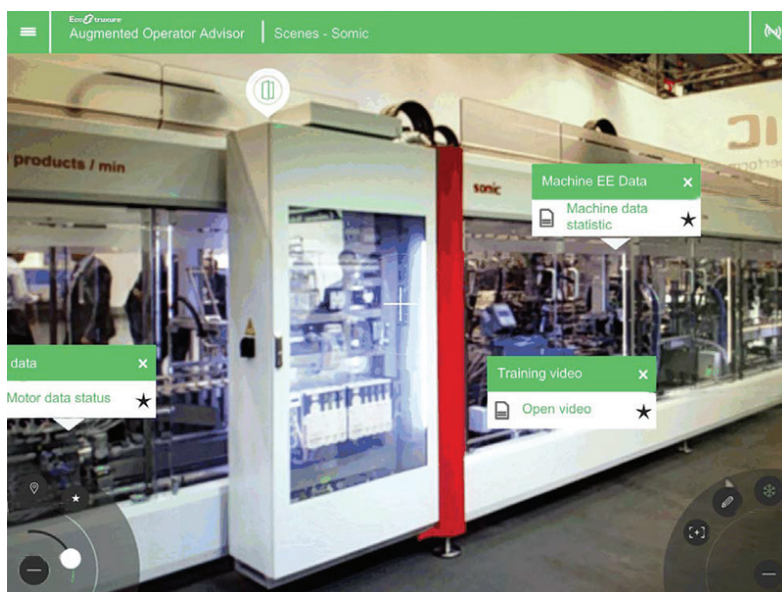
Note: To view real-time values of process variables produced by the equipment being monitored, Node-RED or EcoStruxure Operator Terminal Expert applications should be installed.

EcoStruxure Augmented Operator Advisor

Augmented reality for instant diagnosis, contactless maintenance, increased efficiency, and lower costs

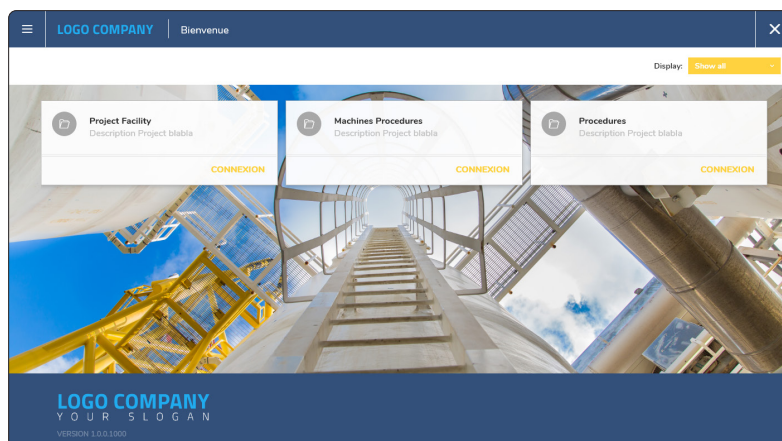
Architecture (continued)

■ EcoStruxure Augmented Operator Advisor App (1): This is an application running on a mobile device that views reality and compares it to photographs of scenes stored in the EcoStruxure Augmented Operator Advisor project. When the scene being viewed by the camera and the stored image match, the user interface controls and points of interest associated with the scene are displayed. The App is available in English, French, German, Italian, Spanish, Simplified Chinese, Japanese, and South Korean languages.



EcoStruxure Augmented Operator Advisor App

□ Customised App Theme (2): The application can be modified to show a customised corporate identity using a theme file. The application remains in the Schneider Electric App Store accounts, which means that the customers will maintain their applications up-to-date and will not have to manage the mobile software.



Example of the Customized App Theme

□ Zoom and pan out: With this feature, scenes can be zoomed and panned out at the same time making the navigation and closing of POI easy near the edge of scenes.

(1) Both EcoStruxure Augmented Operator Advisor App and EcoStruxure Augmented Operator Advisor Runtime should be connected to the same WiFi network or 3G/4G/5G mobile network to be able to communicate with each other.

(2) This feature is not available in all countries. Please contact your local Schneider Electric sales office for more information.

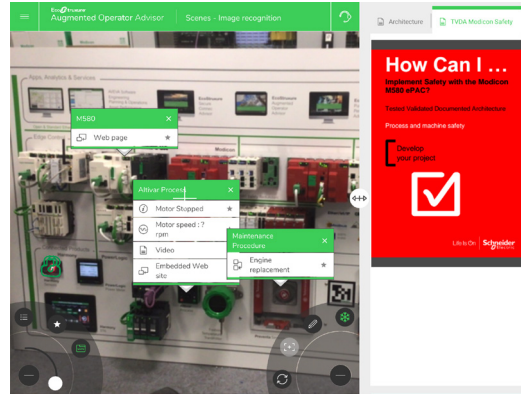
Note: To view real-time values of process variables produced by the equipment being monitored, Node-RED or EcoStruxure Operator Terminal Expert applications should be installed.

EcoStruxure Augmented Operator Advisor

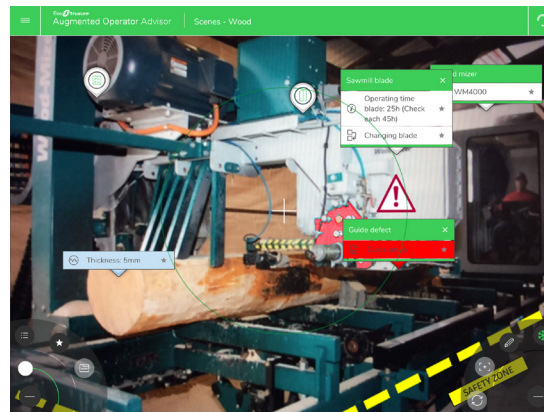
Augmented reality for instant diagnosis, contactless maintenance, increased efficiency, and lower costs

Architecture (continued)

□ Embedded browser: The embedded browser simultaneously displays the relevant documents along with the augmented reality information. You can also interact with other softwares such as SAP or Maximo by displaying webpages.



□ Customise with POI color: The POI color feature allows you to highlight and differentiate individual POIs with background colors. The desired color can be selected or entered in the RGBA color code



Note: This feature has to be enabled in the Builder for it to be displayed in the App.

□ Training mode: This mode allows users to prepare and execute off-site procedures by executing a dry-run of the procedure in the comfort of their office.

References

The EcoStruxure Augmented Operator Advisor App can be freely downloaded from the App store on iOS, Android and Windows. The EcoStruxure Augmented Operator Advisor App can be used permanently during 42 days of free trial to evaluate the entire solution in your environment.

The EcoStruxure Augmented Operator Advisor Builder software can be accessed from the link www.schneider-electric.com/ecostruxure-augmented-operator-advisor to create Augmented Reality projects. The online license must be activated from the EcoStruxure Augmented Operator Advisor Builder itself.

The EcoStruxure Augmented Operator Advisor Runtime software can be freely downloaded from the link www.schneider-electric.com/ecostruxure-augmented-operator-advisor to execute projects on PC without activation code (42 days trial).

Also, the free trial version (42 days trial) allows you to evaluate the complete solution (Builder, RunTime, and App) in your environment. There is no limitation on the number of areas, points of interest, and procedures. You can purchase licenses and activate the software at any time during the trial period.

EcoStruxure Augmented Operator Advisor

Augmented reality for instant diagnosis, contactless maintenance, increased efficiency, and lower costs

EcoStruxure Augmented Operator Advisor Builder software			
Description	Paper license type	Compatible Web browsers	Reference
Augmented Operator Builder Essential	Single 1 year license	<input type="checkbox"/> Google® Chrome™ (version 69 or higher)	AOABS3CZSSXMZZ
Augmented Operator Builder Performance	Single 1 year license	<input type="checkbox"/> Microsoft® Internet Explorer™ (version 11 or higher)	AOABM3CZMSXMZZ
EcoStruxure Augmented Operator Advisor Builder Local Essential	Single 1 year license	<input type="checkbox"/> Mozilla® Firefox™ (version 63 or higher)	AOALEICZSSXMZZ
EcoStruxure Augmented Operator Advisor Builder Local Performance	Single 1 year license	<input type="checkbox"/> Microsoft® Edge™ (version 15 or higher)	AOALPICZMSXMZZ
EcoStruxure Augmented Operator Builder Essential/ Performance Local Projects Add-on	Single license, Add-on to existing Builder license		AOALPJCZZSPMZZ

EcoStruxure Augmented Operator Advisor Runtime software			
Description	Paper license type	Compatible HMIs	Reference
Augmented Operator RT Essential Level 1 , Single-area projects and up to 20 points of interest by project	Single permanent license	Harmony HMIG5U2 Open Box Harmony iPC: HMIBSU, HMIBMI, HMIBMO, HMIBMU, HMIBMP, HMIPSP/ Industrial PC, and Standard Windows PC	AOARS1CZSSPMZZ
Augmented Operator RT Essential Level 2 , Single-area projects and up to 50 points of interest by project	Single permanent license		AOARS2CZSSPMZZ
Augmented Operator RT Essential Level 3 , Single-area projects and unlimited number of points of interest by project	Single permanent license		AOARS3CZSSPMZZ
Augmented Operator RT Performance Level 1 , Single-area projects and up to 20 points of interest and 10 procedures by project	Single permanent license		AOARM1CZMSPMZZ
Augmented Operator RT Performance Level 2 , Single-area projects and up to 50 points of interest and 20 procedures per project	Single permanent license		AOARM2CZMSPMZZ
Augmented Operator RT Performance Level 3 , Single-area projects and unlimited number of points of interest and procedures by project	Single permanent license		AOARM3CZMSPMZZ
Augmented Operator RT Multi-Area , Multi-area projects and unlimited number of points of interest and procedures by project	Single permanent license		AOARX3CZXSPMZZ

A	
AOABM3CZMSXMZZ	9
AOABS3CZSSXMZZ	9
AOALEICZSSXMZZ	9
AOALPICZMSXMZZ	9
AOALPJCZZSPMZZ	9
AOARM1CZMSPMZZ	9
AOARM2CZMSPMZZ	9
AOARM3CZMSPMZZ	9
AOARS1CZSSPMZZ	9
AOARS2CZSSPMZZ	9
AOARS3CZSSPMZZ	9
AOARX3CZXSPMZZ	9

Life Is On



Learn more about our products at
www.se.com/ecostruxure-augmented-operator-advisor

The information provided in this documentation contains general descriptions and/or technical characteristics of the performance of the products contained herein. This documentation is not intended as a substitute for and is not to be used for determining suitability or reliability of these products for specific user applications. It is the duty of any such user or integrator to perform the appropriate and complete risk analysis, evaluation and testing of the products with respect to the relevant specific application or use thereof. Neither Schneider Electric nor any of its affiliates or subsidiaries shall be responsible or liable for misuse of the information contained herein.

Design: Schneider Electric
Photos: Schneider Electric

Schneider Electric Industries SAS

Head Office
35, rue Joseph Monier - CS 30323
F-92500 Rueil-Malmaison Cedex
France

DIA5ED2190301EN
April 2021 - V3.0