

Magnet Gripper

Adsorbs and Holds with a Magnet

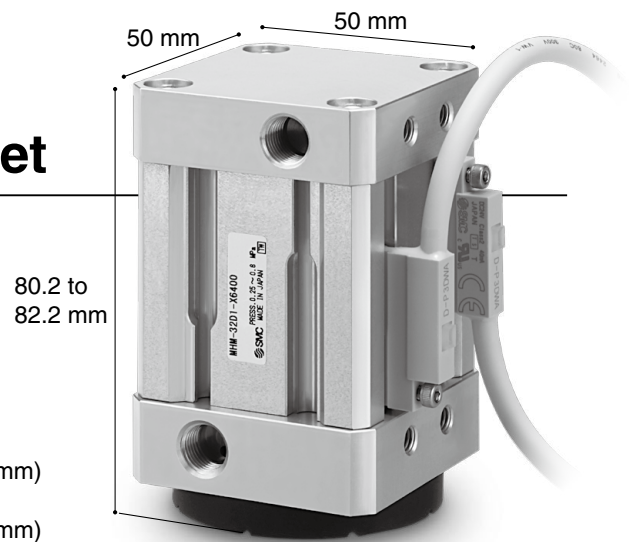
■Steel plates can be transferred without a vacuum.

Supports workpieces with holes and uneven surfaces where a vacuum pad cannot be used.

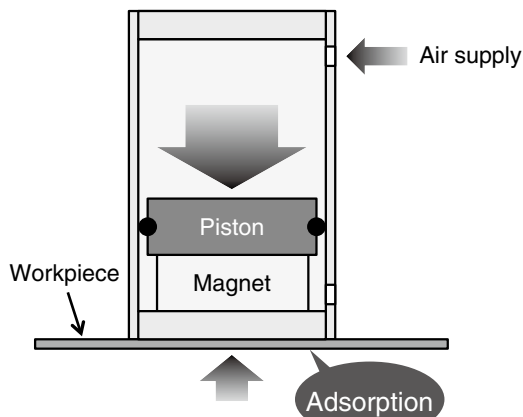
■Holds workpieces even when air is shut off.

■High holding force **80 N** (Workpiece plate thickness: 0.6 mm)
120 N (Workpiece plate thickness: 1.4 mm)

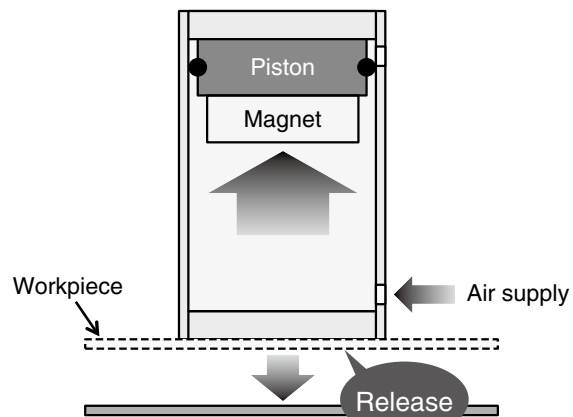
■Residual holding force **0.3 N or less** (Reduces workpiece release time)



Workpiece adsorption/holding



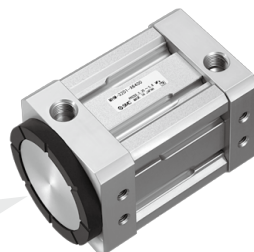
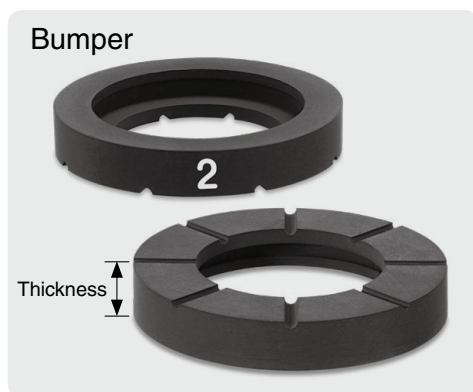
Workpiece release



■Holding force can be adjusted with a bumper with 3 types of thicknesses.

Thickness	Holding force
6 mm	80 N
7 mm	50 N
8 mm	30 N

Prevents deformation of workpieces and accidental adsorption of a second piece. Fluororubber with excellent oil resistance is used. Has a contact surface structure which reduces sideslip. Bumper can be replaced without a tool.



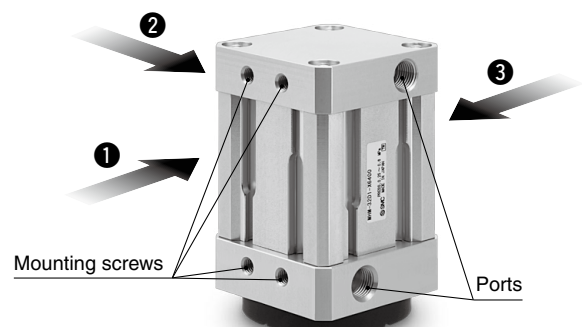
■Auto switches can be mounted on 4 surfaces.

Magnetic field resistant auto switch:
D-P3DWA

Small auto switch:
D-M9□V



■Mountable on 3 surfaces.



MHM-X6400



15-E653

Magnet Gripper MHM-X6400

How to Order

MHM-32D 1 - P3DWAL - X6400

Holding force

Symbol	Holding force
1	80 N
2	50 N
3	30 N

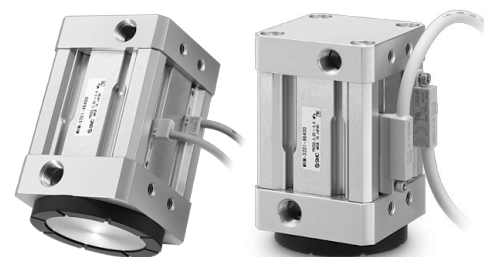
Number of auto switches

Nil	2
S	1

Auto switch

Nil	Without auto switch
P3DWA□	D-P3DWA□
M9□V	D-M9□V□

*: For applicable auto switches, refer to the table below.



Applicable Auto Switches: Refer to Best Pneumatics No. 3 for further information on auto switches.

Magnetic Field Resistant Auto Switches

Type	Auto switch model	Applicable magnetic field	Electrical entry	Indicator light	Wiring (Pin no. in use)	Load voltage	Lead wire length	Applicable load		
Solid state auto switch	P3DWASC	AC magnetic field (Single-phase AC welding magnetic field)	Pre-wired connector	2-color	2-wire (3-4)	24 VDC	0.3 m	Relay, PLC		
	P3DWASE		2-wire (1-4)		0.5 m					
	P3DWA		Grommet		2-wire		3 m			
	P3DWAL						5 m			
	P3DWAZ									

Small Auto Switches

Type	Special function	Electrical entry	Indicator light	Wiring (Output)	Load voltage		Auto switch model	Lead wire length [m]				Pre-wired connector	Applicable load		
					DC			AC	Perpendicular	0.5 (Nil)	1 (M)		3 (L)	5 (Z)	
Solid state auto switch	—	Grommet	Yes	3-wire (NPN)	24 V	5 V, 12 V	—	M9NV	●	●	●	○	○	IC circuit	Relay, PLC
				3-wire (PNP)		12 V		M9PV	●	●	●	○	○		
				2-wire	12 V	M9BV		●	●	●	○	○			
	Diagnostic indication (2-color indicator)			3-wire (NPN)	24 V	5 V, 12 V		M9NWV	●	●	●	○	○	IC circuit	
				3-wire (PNP)		5 V, 12 V		M9PWV	●	●	●	○	○		
				2-wire		12 V		M9BWV	●	●	●	○	○		
				3-wire (NPN)		5 V, 12 V		M9NAV	○	○	●	○	○		
	3-wire (PNP)			M9PAV	○			○	●	○	○				
	2-wire			12 V	M9BAV			○	○	●	○	○			

*: Solid state auto switches marked with "○" are produced upon receipt of order.

*: For details about auto switches with pre-wired connectors, refer to Best Pneumatics No. 3.

*: Auto switches are shipped together, but not assembled.

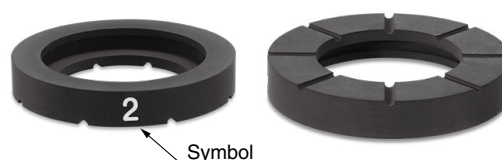
*: Lead wire length symbols: 0.5 m Nil (Example) M9NWV
1 m M (Example) M9NWVM
3 m L (Example) M9NWVL
5 m Z (Example) M9NWVZ

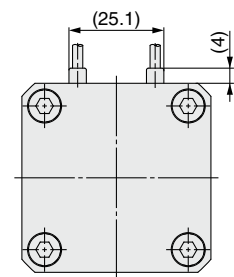
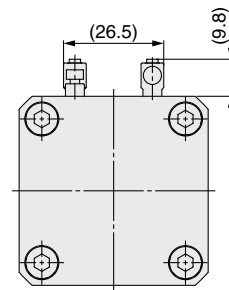
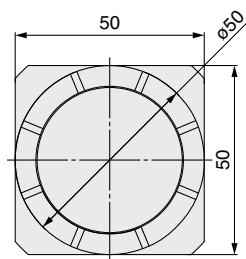
Specifications

Action	Double acting
Fluid	Air
Operating pressure	0.25 to 0.6 MPa
Ambient and fluid temperature	-10 to 60°C (No freezing)
Holding force	80 N
(Workpiece thickness: 0.6 mm)	50 N
	30 N
Residual holding force	0.3 N or less
Lubrication	Non-lube
Weight	475 g

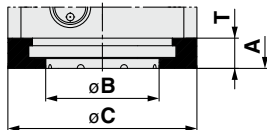
Bumper Order No.

Symbol	Holding force	Model
1	80 N	MHM-A3201-1-X6400
2	50 N	MHM-A3201-2-X6400
3	30 N	MHM-A3201-3-X6400





With auto switch



Symbol	Part number	A	øB	øC	T
1	MHM-32D1-X6400	80.2	39	50	(6)
2	MHM-32D2-X6400	81.2	30		(7)
3	MHM-32D3-X6400	82.2			(8)

⚠ Caution

- 