

**Rittal – The System.**

Faster – better – everywhere.

# VX SE free-standing enclosure system

Because often, simple is best

ENCLOSURES

POWER DISTRIBUTION

CLIMATE CONTROL

IT INFRASTRUCTURE

SOFTWARE & SERVICES



FRIEDHELM LOH GROUP

# Rittal and EPLAN

Your benefits at a glance



**Rittal is one of the world's leading system suppliers of enclosures, power distribution, climate control, IT infrastructure, automation solutions and software & services**

## 1. Engineering

- Error-free, flexible processes throughout the entire value chain with the digital twin
- High-quality 3D data in the EPLAN Data Portal
- 3D-assisted design with EPLAN Pro Panel

## 2. Sourcing

- Error-free product configuration with the Rittal Configuration System
- Interfaces with EPLAN engineering tools
- Simple ordering and fast delivery of Rittal standard products



**More productive** – with digitalization and prototyping  
**Faster** – with online configurators  
**More reliable** – with our smart, global service  
**Better** – with Industry 4.0 and automation



**EPLAN delivers software and service  
in all fields of electrical engineering,  
automation and mechatronics.**

### 3. Manufacturing

- Rittal's fully automated production processes help guarantee precision machining, population and wire assembly
- Straightforward wiring with EPLAN Smart Wiring
- All work stations can be linked together with the digital twin

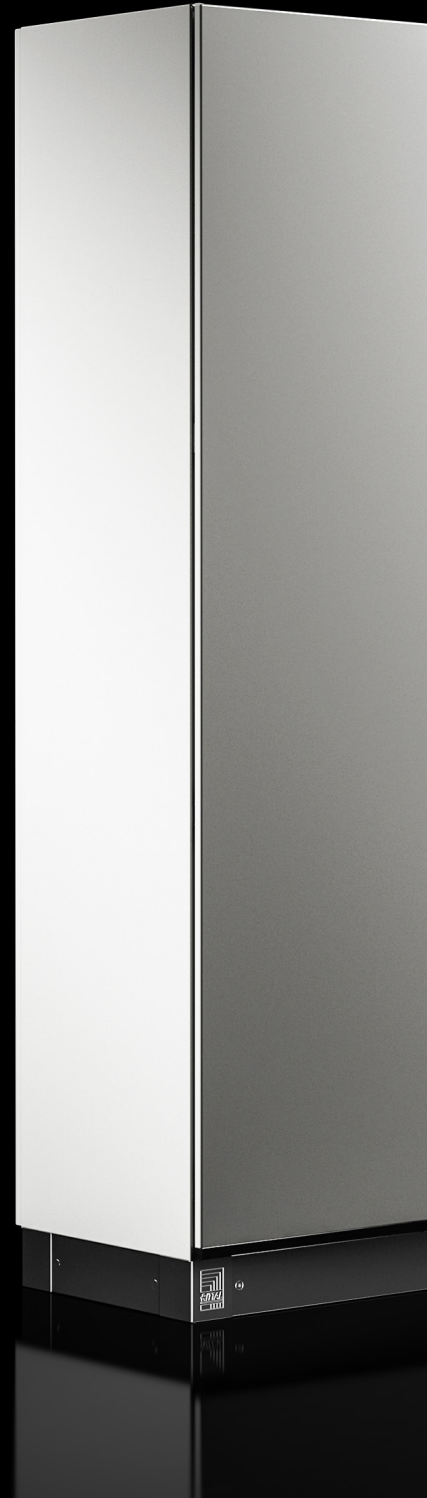
### 4. Operations

- Minimized downtimes and efficient production with the Rittal Global Service
- Predictive maintenance via IoT linking of Rittal cooling units
- The cloud-based solution EPLAN eVIEW allows a cross-locational overview of all project data



# Compact enclosure too small?

The VX SE free-standing enclosure system offers an effective alternative for situations where a compact enclosure is not big enough.



ENCLOSURES

POWER DISTRIBUTION

CLIMATE CONTROL

FRIEDHELM LOH GROUP



# Baying enclosure system too large?

The VX SE free-standing enclosure system is an effective alternative for situations where VX25 or TS 8 baying is not required.



## VX SE – the solution

### Reap the benefits of the VX SE for your project:

- Minimal ordering and assembly work, thanks to the solid side panels and roof
- Body produced from a single piece for maximum stability and torsional rigidity
- High protection category up to IP 66/NEMA 4 or 4X
- The smart enclosure design from a single piece to help ensure good EMC properties
- Wide range of dimensions up to a width of 1800 mm, may replace up to three bayed enclosures
- Depths of 300 mm are ideally suited for applications in confined spaces, such as building services

IT INFRASTRUCTURE

SOFTWARE & SERVICES



### High level of protection

Solid side panels and roof. Eliminating the gaps between the roof, side panel and frame helps to prevent dirt deposits.

### Reliable pre-fixing

The clip at the top of the mounting plate holds it in place during one-person assembly until the plate can be screwed into position. The mounting plate is depth-adjustable on a 25 mm pitch pattern without the need for tools.

### Ease of placement

The printed pitch pattern allows components to be easily and quickly positioned on the mounting plate – no measuring required.

### Digitalization

Fully automated incorporation into the production workflow is easy with the QR code, for seamless digital monitoring at every stage, from incoming materials right through to the finished product.



Rittal VX SE





### Flexible interior installation

Interior installation with regard to depth couldn't be simpler, thanks to punched sections with mounting flanges 17 x 73 mm.

### Installation options

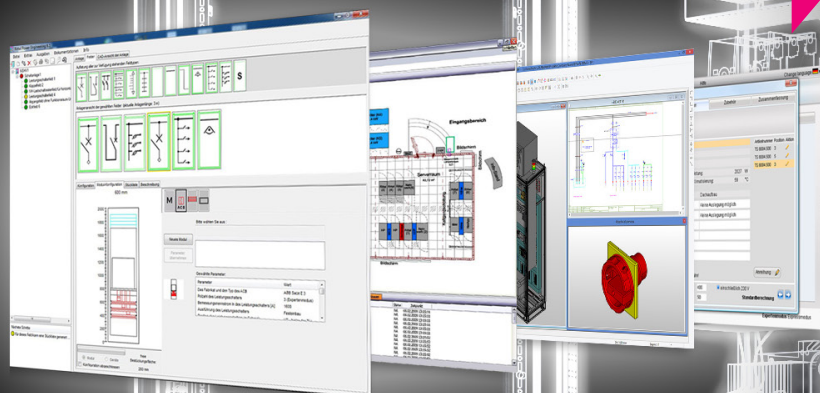
The continuous pattern of square punchings supports the use of metric cable glands to create more mounting options at all levels.



### Reliable engineering

Rittal's customers are aided throughout the automated production process and when working with virtual prototypes, by accessing a comprehensive selection of conversion and planning tools:

- EPLAN Pro Panel
- 2D/3D CAD data
- ecl@ss Advanced
- Technical documentation
- Data for planners

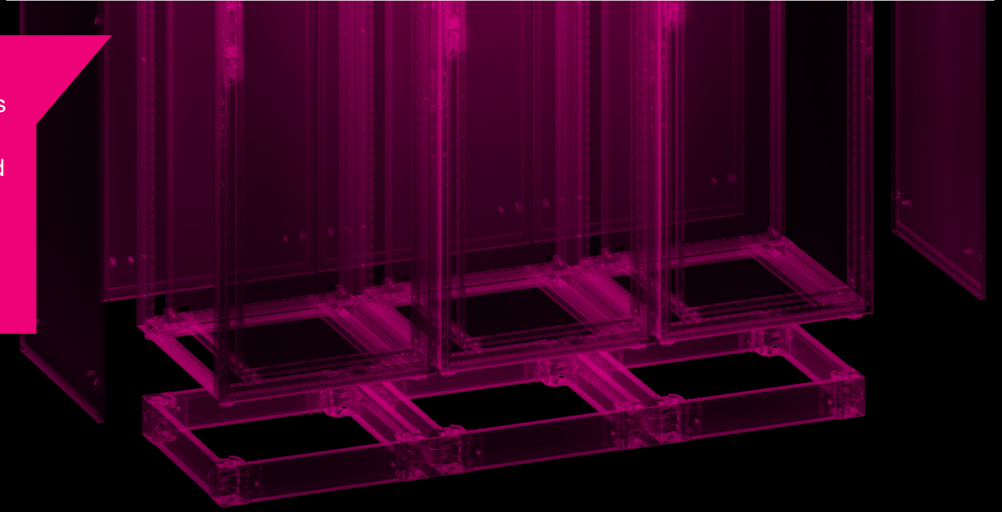


### Reduce ordering and assembly work

No need to order side panels or buying accessories separately. What is more, mounting plate infills are no longer required, due to the seamless mounting plate.

### Flexibility and potential savings

With enclosures available in widths of up to 1800 mm, one stand-alone enclosure can replace bayed suites of up to three enclosures. Only one wide base/plinth is needed. Sealing is likewise unnecessary.



### Stainless steel

The high-quality stainless steel surface finish with a brushed grain size of 400 and a depth of  $< 0.8 \mu\text{m}$  prevents deposits of dirt and dust.

### Carbon steel

The three-stage surface treatment process guarantees maximum protection against corrosion and is resistant to mineral oils, lubricants, machining emulsions and most solvents.

### System platform

The uniform system platforms in carbon steel and stainless steel enclosures create a unique variety of configurations with identical engineering.

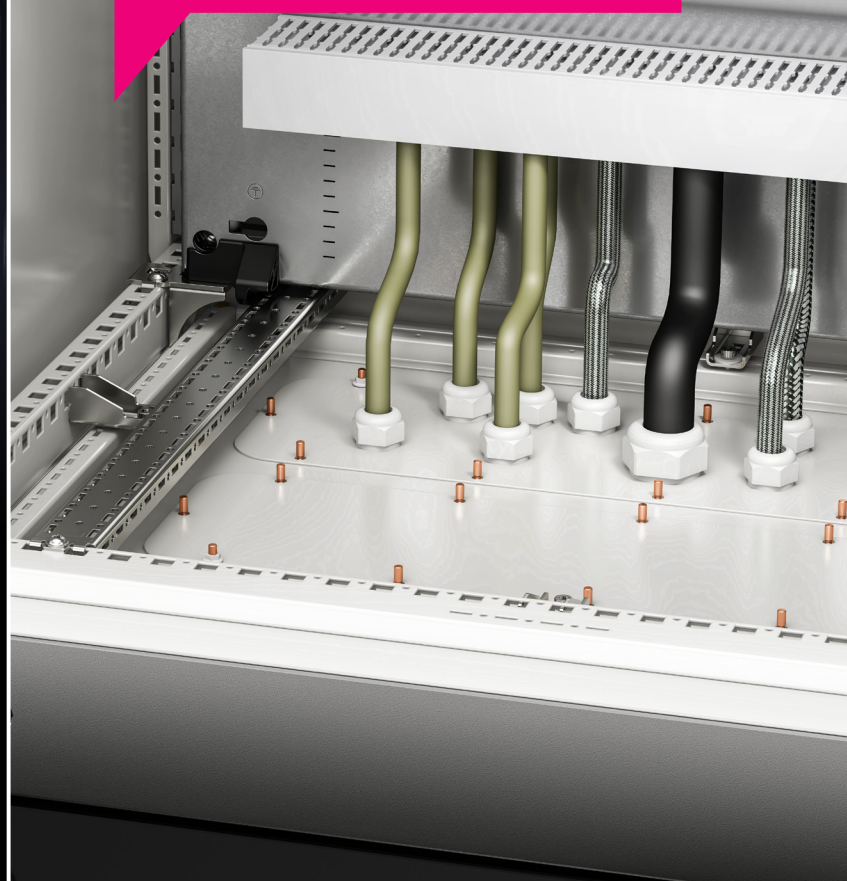


### Enhanced safety

The high protection category of up to IP 66/NEMA 4 or 4X and NEMA 3R supports a wide range of applications for the VX SE. It also offers IK 10 impact protection and UL Certification.

### Handling and ergonomics

Integral gland plates in the base allow exceptionally simple cable entry into the super-airtight IP 66/NEMA 4 and 4X enclosures, as an ergonomic preparation for cable entry.



300 mm

80°

### Space-saving

Depths of 300 mm are ideally suited for any applications in confined spaces, such as building services.



### Safety

With this smart design, the side panels, roof and enclosure frame are conductively connected, so that no additional earthing is required. When using Rittal climate control equipment and Rittal fan-and-filter units in the rear panel, no additional earthing is required.



### Effective shielding

Good EMC properties are realized due to the smart enclosure construction from one single piece.



### Flexible

Flexible positioning of the cable clamp rail on a 25 mm pitch pattern to fit the mounting plate.

### Versatile

Flexible cable entry options with a versatile range of accessories and multi-piece gland plate design.





The image shows a close-up of a grey metal enclosure with several gland plates being fastened with screws. The plates have a double edge fold and a large opening in the center. The screws are silver and have a distinctive shape. The background is a dark, textured surface.

### Time-saving

Simple screw fastening of the gland plates is fast, and automatically creates potential equalization in a single step.

### Transparency

The identifying dimensions stamped into the gland plates make it easier to allocate gland plates the matching enclosure.

### Space for cables

The large opening in the stable base frame makes it much easier to install cables.



The image shows a close-up of a gland plate with two earthing points. The points are silver and have a distinctive shape. The background is a dark, textured surface.

### Labor-saving

The earthing points with standardized markings provide helpful assists, enabling quicker work flow.

### Rigidity

The double edge fold on the gland plates prevents bending even under heavy loads and helps guarantee the required high degree of protection.

### Cable-friendly

Rounded edges prevent cables routed under the enclosure from being damaged.

# VX SE free-standing enclosure system, carbon steel



						Basic enclosure, carbon steel	IP 66/NEMA 4, carbon steel
						<b>Material and surface finish:</b> <ul style="list-style-type: none"><li>– Enclosure: Carbon steel, 1.5 mm, dipcoat-primed, powder-coated on the outside, textured paint</li><li>– Door: Carbon steel, 2 mm, dipcoat-primed, powder-coated on the outside, textured paint</li><li>– Rear panel: Carbon steel, 1.5 mm, dipcoat-primed, powder-coated on the outside, textured paint</li><li>– Mounting plate: Carbon steel, 3 mm, zinc-plated, passivated</li><li>– Gland plates: Carbon steel, 1.5 mm, zinc-plated, passivated</li></ul>	<b>Material and surface finish:</b> <ul style="list-style-type: none"><li>– Enclosure: Carbon steel, 1.5 mm, dipcoat-primed, powder-coated on the outside, textured paint</li><li>– Door: Carbon steel, 2 mm, dipcoat-primed, powder-coated on the outside, textured paint</li><li>– Rear panel: Carbon steel, 1.5 mm, dipcoat-primed, powder-coated on the outside, textured paint</li><li>– Mounting plate: Carbon steel, 3 mm, zinc-plated, passivated</li><li>– Base: Carbon steel, 1.5 mm, dipcoat-primed and powder-coated, textured paint</li></ul>
						<b>Color:</b> <ul style="list-style-type: none"><li>– RAL 7035</li></ul>	<b>Color:</b> <ul style="list-style-type: none"><li>– RAL 7035</li></ul>
						<b>Protection category IP to IEC 60 529:</b> <ul style="list-style-type: none"><li>– IP 55</li></ul>	<b>Protection category IP to IEC 60 529:</b> <ul style="list-style-type: none"><li>– IP 66</li></ul>
						<b>Protection category to UL 50E:</b> <ul style="list-style-type: none"><li>– Type 12 (NEMA 12), 3R</li></ul>	<b>Protection category to UL 50E:</b> <ul style="list-style-type: none"><li>– Type 4 (NEMA 4), 3R</li></ul>
						<b>Supply includes:</b> <ul style="list-style-type: none"><li>– Enclosure, solid top and sides</li><li>– Door(s)</li><li>– R/h door hinge with single-door enclosures, may be swapped to opposite side</li><li>– Mounting plate</li><li>– Gland plates</li><li>– Rear panel, detachable</li><li>– Lock: 3 mm double-bit</li><li>– 2 punched rails 18 x 39 mm</li></ul>	<b>Supply includes:</b> <ul style="list-style-type: none"><li>– Enclosure, solid top and sides</li><li>– Door(s)</li><li>– R/h door hinge with single-door enclosures, may be swapped to opposite side</li><li>– Mounting plate</li><li>– Base including gland plates</li><li>– Rear panel, detachable</li><li>– Lock: 3 mm double-bit</li><li>– 2 punched rails 18 x 39 mm</li></ul>
						<b>Approvals:</b> UL, cUL	<b>Approvals:</b> UL, cUL
Height mm	Width mm	Depth mm	Doors	Rear panel	Model No.	Model No.	
1600	600	400	1	one-piece	–	–	
1800	600	300	1	one-piece	5820.600	–	
1800	600	400	1	one-piece	5830.600	5830.680*	
1800	600	500	1	one-piece	–	–	
2000	600	300	1	one-piece	5821.600	–	
1800	800	300	1	one-piece	5822.600	–	
1800	800	400	1	one-piece	5831.600	5831.680*	
1800	800	500	1	one-piece	–	–	
2000	800	300	1	one-piece	5823.600	–	
2000	800	400	1	one-piece	5832.600	–	
2000	800	500	1	one-piece	5833.600	–	
2000	800	600	1	one-piece	5834.600	5834.680**	
1800	1000	400	2	one-piece	5840.600	–	
1800	1200	300	2	one-piece	5824.600	–	
1800	1200	400	2	one-piece	5841.600	–	
2000	1200	300	2	one-piece	5825.600	–	
2000	1200	400	2	one-piece	5843.600	–	
2000	1200	500	2	one-piece	5844.600	–	
2000	1200	600	2	one-piece	5845.600	–	
1800	1600	400	2	two-piece	5842.600	–	
2000	1800	500	2	two-piece	5846.600	–	



# VX SE free-standing enclosure system, stainless steel



## Basic enclosure, stainless steel steel

### Material and surface finish:

- Enclosure: Stainless steel 1.4301 (AISI 304), 1.5 mm, exterior brushed, grain size 400
- Door: Stainless steel 1.4301 (AISI 304), 2 mm, exterior brushed, grain size 400
- Rear panel: Stainless steel 1.4301 (AISI 304), 1.5 mm, exterior brushed, grain size 400
- Mounting plate: Carbon steel, 3 mm, zinc-plated, passivated
- Gland plates: Stainless steel 1.4301 (AISI 304), 1.5 mm, uncoated

### Protection category IP to IEC 60 529:

- IP 55

### Protection category to UL 50E:

- Type 12 (NEMA 12), 3R

### Supply includes:

- Enclosure, solid top and sides
- Door(s)
- R/h door hinge with single-door enclosures, may be swapped to opposite side
- Mounting plate
- Gland plates
- Rear panel, detachable
- Lock: 3 mm double-bit
- 2 punched rails 18 x 39 mm

**Approvals:** UL, cUL

## IP 66/NEMA 4X, stainless steel

### Material and surface finish:

- Enclosure: Stainless steel 1.4301 (AISI 304), 1.5 mm, exterior brushed, grain size 400
- Door: Stainless steel 1.4301 (AISI 304), 2 mm, exterior brushed, grain size 400
- Rear panel: Stainless steel 1.4301 (AISI 304), 1.5 mm, exterior brushed, grain size 400
- Mounting plate: Carbon steel, 3 mm, zinc-plated, passivated
- Base: Stainless steel 1.4301 (AISI 304), 1.5 mm, uncoated

### Protection category IP to IEC 60 529:

- IP 66

### Protection category to UL 50E:

- Type 4 (NEMA 4X), 3R

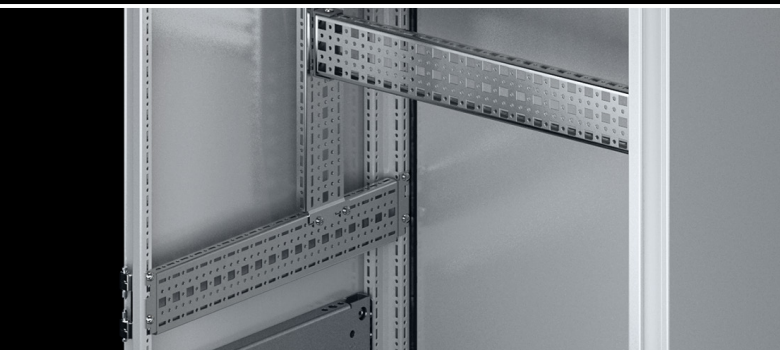
### Supply includes:

- Enclosure, solid top and sides
- Door(s)
- R/h door hinge with single-door enclosures, may be swapped to opposite side
- Mounting plate
- Base including gland plates
- Rear panel, detachable
- Lock: 3 mm double-bit
- 2 punched rails 18 x 39 mm

**Approvals:** UL, cUL

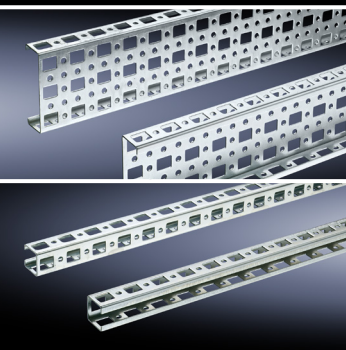
Height mm	Width mm	Depth mm	Doors	Rear panel	Model No.	Model No.
1600	600	400	1	one-piece	5850.600	5850.680*
1800	600	300	1	one-piece	–	–
1800	600	400	1	one-piece	–	–
1800	600	500	1	one-piece	5851.600	–
2000	600	300	1	one-piece	–	–
1800	800	300	1	one-piece	–	–
1800	800	400	1	one-piece	–	–
1800	800	500	1	one-piece	5852.600	5852.680*
2000	800	300	1	one-piece	–	–
2000	800	400	1	one-piece	–	–
2000	800	500	1	one-piece	–	–
2000	800	600	1	one-piece	5853.600	5853.680**
1800	1000	400	1	one-piece	5854.600	–
1800	1200	300	2	one-piece	–	–
1800	1200	400	2	one-piece	–	–
2000	1200	300	2	one-piece	–	–
2000	1200	400	2	one-piece	–	–
2000	1200	500	2	one-piece	5855.600	–
2000	1200	600	2	one-piece	–	–
1800	1600	400	2	two-piece	–	–
2000	1800	500	2	two-piece	–	–

# System accessories



## **Punched sections with mounting flanges, 23 x 73 mm**

Flexible interior installation on a 25 mm pitch pattern. With the system punchings, cage nuts up to M8 can be used across three levels. This allows you to securely fasten your own components with metric screws.



## **Punched sections without mounting flanges 23 x 73 mm and mounting rails 23 x 23 mm**

For fixing at variable intervals and individually to the inner mounting surface of the enclosure frame. When mounted, the punched sections and rails sit flush to the enclosure frame. Due to the additional mounting bracket, they can be used with a pre-installed mounting plate and can also be cut to any required length.



## **Partial mounting plate**

The partial mounting plates create additional mounting surfaces at all places in the enclosure. Suitable for use as a component shelf or hinged.



## **Punched sections with mounting flanges, 17 x 73 mm**

Ideal for straightforward configuration of the enclosure system or for cable routing from the door to the mounting plate. May be fitted directly to the profile.



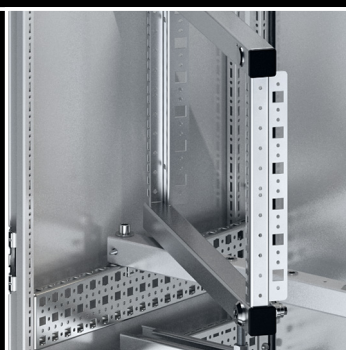
## **Threaded block**

The threaded block enables simple metric screw-fastening. It may be used on the enclosure section as well as on punched sections and rails with square 12.5 x 11 mm punchings.



## **LED system light**

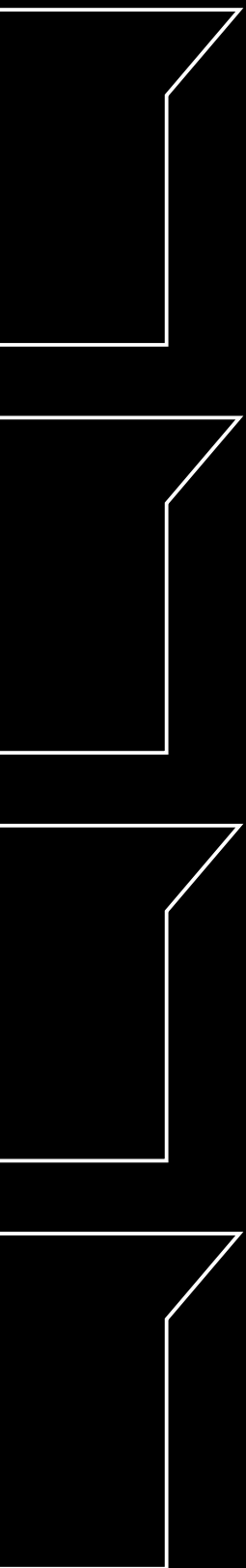
Connection is just as straightforward as assembly. The rotating connectors allow user-friendly connection, even in tight spaces. The wide ranging power supply unit means that the light can be used anywhere in the world.



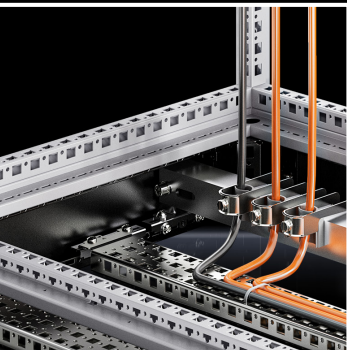
## **Swing frame**

The ideal solution for configuration with 482.6 mm (19") components in the vertically hinged version, for full or partial installation. Swing frames may be positioned anywhere on the 25 mm pitch pattern.





# System accessories



## Cable clamping

Various cable clamping options are available and can be used identically both inside the enclosure and in the base/plinth. Relocating cable clamping into the base/plinth area frees up more mounting space inside the enclosure, rather than being lost to allow for bending radii.



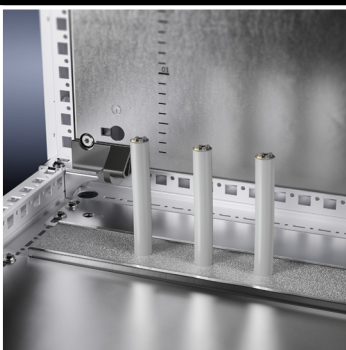
## Cable glands

Cable glands made from polyamide or brass are ideal for maintaining the IP protection category in VX SE IP 66/NEMA 4 and 4X enclosures.



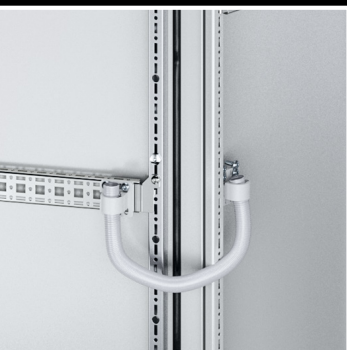
## Cable duct

Cable ducts are ideal for managing large volumes of cables inside the enclosure. Components are simply screw-fastened. The screw heads may be securely covered with an isolator cap for insulation purposes. Cable ducts for vertical extrusions may be fitted directly onto the enclosure section, to save space on the mounting plate.



## Gland plates

The modular base assembly allows completely flexible cable entry into the VX SE, matching your individual requirements. Essential cable clamping takes place in the base/plinth area, directly above the insertion point, or on the mounting plate.



## Cable conduit and cable conduit holder

Allows crush-proof cable routing to moving parts such as doors or swing frames with minimal assembly work



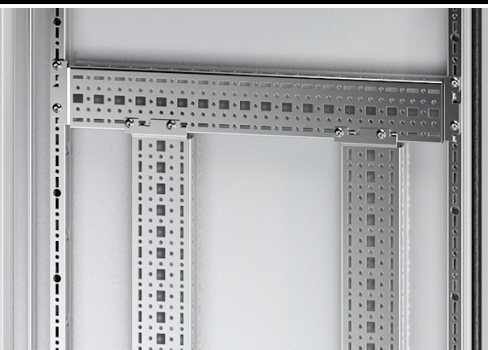
## Sealing frame, modular

For universal use on all surfaces and walls, for inserting pre-assembled cables with connectors. Can also be mounted onto 24-pole or 16-pole connector cut-outs.





# System accessories



## Punched sections with mounting flanges, 17 x 73 mm

The punched section with mounting flange, 17 x 73 mm, allows completely flexible installation on the tubular door frame, no machining required.



## Wiring plan lectern

During maintenance work, the wiring plan lectern folds out easily to hold circuit diagrams and documents. The integral punchings provide temporary accommodation for tools.



## Spacers

Spacer bolts allow a mounting level to be quickly and easily created at the correct distance, onto which a top hat rail or a contact hazard protection cover for built-in components can be easily installed in the door.



## Tubular door frame

The all-round T-head punchings allow simple, fast attachment of cables with standard commercially available cable ties.



## Door stay for escape routes

The door stay for escape routes guarantees convenience and safety. The enclosure door is securely locked into position for assembly work. In dangerous situations, the stay is released automatically under pressure, and by using 180° hinges, escape routes can be kept clear in both directions.



## Climate control

When using Rittal climate control devices and Rittal fan-and-filter units on the rear panel, no additional earthing is required. With this smart design, the side panels, roof and enclosure frame are conductively connected, so that no additional earthing is required.



## Ride-up roller

Even the heaviest populated door is easily opened and closed with the ride-up roller.



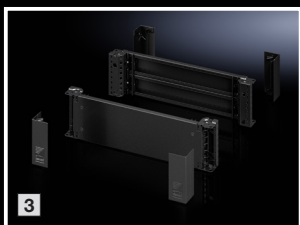
## Comfort handle

For retro-fitting lock systems such as profile half-cylinders or lock inserts. As the handle does not take up any swing space, due to its folding action, the door surface area available for installed equipment is maximized.





# Accessories



## Base/plinth

### 1 Base/plinth corner piece with base/plinth trim panel, front and rear, 100 mm

For enclosure width mm	Model No.
600	8640.002
800	8640.003
1000	8640.005
1200	8640.007
1600	8640.008
1800	8640.009

### 2 Base/plinth trim panels, side, 100 mm

For enclosure depth mm	Model No.
300	8640.030
400	8640.031
500	8640.032
600	8640.033

### 3 Base/plinth corner piece with base/plinth trim panel, front and rear, 200 mm

For enclosure width mm	Model No.
600	8640.022
800	8640.023
1000	8640.024
1200	8640.025
1600	8640.026
1800	8640.027

### 4 Base/plinth trim panels, side, 200 mm

For enclosure depth mm	Model No.
300	8640.040
400	8640.041
500	8640.042
600	8640.043

## Doors/locks

### 1 Glazed door

For enclosure width x enclosure height mm	Model No.
600 x 1800	8610.685
600 x 2000	8610.605
800 x 1800	8610.885
800 x 2000	8610.805

### 2 Comfort handle

For	Model No.
Lock inserts, RAL 7035	8611.020
Lock inserts, matt, chrome-plated	8611.330
Lock inserts and padlock, RAL 7035	8611.290
Profile half-cylinders, RAL 7035	8611.070
Profile half-cylinders, matt, chrome-plated	8611.340

### 3 180° hinges

Color	Model No.
RAL 7035	8800.190
Matt, nickel-plated	8701.180

### 180° hinge for doors with high dynamic loads

Color	Model No.
RAL 7035	8800.710

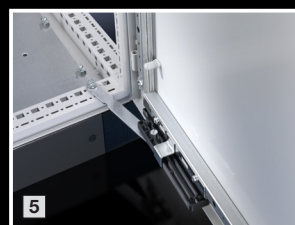
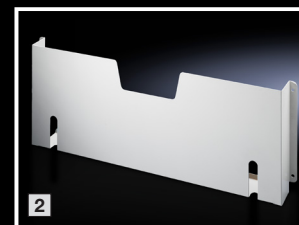
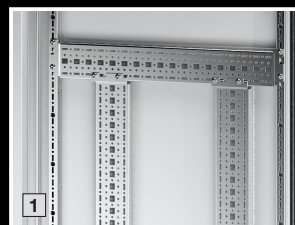


# Accessories

## Installation accessories for doors

1 Punched section with mounting flange, 17 x 73 mm	
For door width mm	<b>Model No.</b>
500	8612.040
600	8612.050
800	8612.070
900	8612.080
1000	8612.110
2 Carbon steel wiring plan pocket, depth 90 mm	
For door width mm	<b>Model No.</b>
500	4115.000
600	4116.000
800	4118.000
900	4123.000
3 Utility lectern	
For door width mm	<b>Model No.</b>
600	4638.600
800	4638.800
4 Door stay	
For all VX SE free-standing enclosures	<b>Model No.</b>
	4583.000
5 Door stay for escape routes	
For all VX SE free-standing enclosures	<b>Model No.</b>
	4583.500
6 Ride-up roller	
For all VX SE free-standing enclosures	<b>Model No.</b>
	4538.000
7 Wiring plan lectern	
For door width mm	<b>Model No.</b>
500	4120.000
600 <sup>1)</sup>	4120.000
800 <sup>1)</sup>	4120.000
8 Support strip	
For door width mm	<b>Model No.</b>
500	4309.000
600	4596.000
800	4598.000
1000	4599.000

<sup>1)</sup> At least two lecterns are required for a width of 600 and 800 mm.



# Accessories

## Cable management

### 1 Section for cable entry, center

For enclosure width mm	Model No.
600	8618.800
800	8618.801
1000	8618.802
1200	8618.803
1600	8618.804

### 2 Section for cable entry, rear

For enclosure width mm	Model No.
600	8618.810
800	8618.811
1000	8618.812
1200	8618.813
1600	8618.814

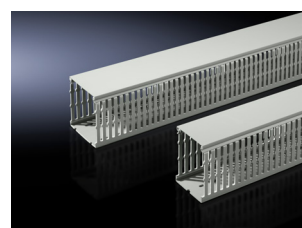
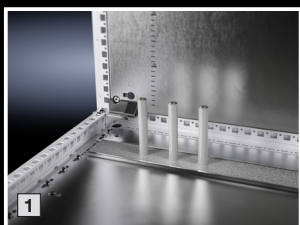
### 3 Cable clamp rail, right-angle section

For enclosure width mm	Model No.
600	8619.410
800	8619.420
1000	8619.430
1200	8619.440
1600	8619.450
1800	8619.460

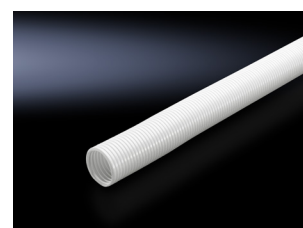
### 4 Sealing frame, modular<sup>1)</sup>

For all VX SE free-standing enclosures	Model No.
	2583.100 for 24-pole cut-out
	2583.080 for 16-pole cut-out

<sup>1)</sup> Also required: Seal inserts and inlays



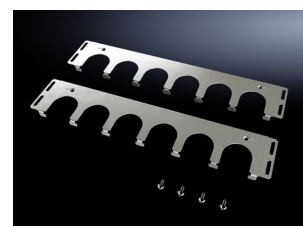
Cable duct



Cable conduit



Cable conduit holder



Cable entry plate



Cable ties

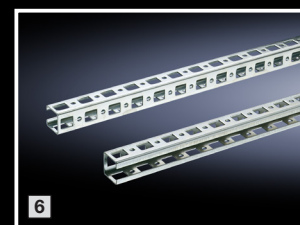
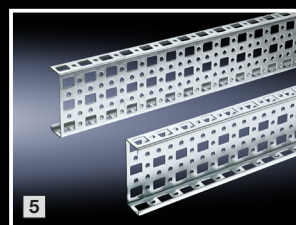
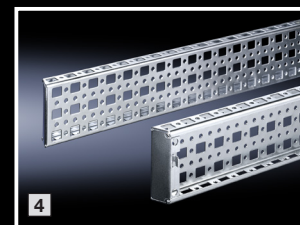
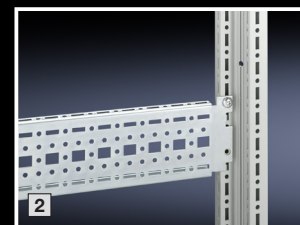
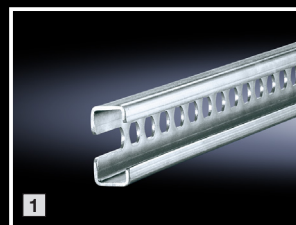


## Interior installation

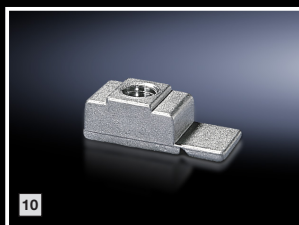
<b>1 C-rail 30/15, for direct installation</b>	
For enclosure width/depth mm	<b>Model No.</b>
600	4944.000
800	4945.000
1000	4946.000
1200	4947.000
<b>2 Punched section with mounting flange 17 x 73 mm for the outer mounting level for installation in the depth</b>	
For enclosure width/depth mm	<b>Model No.</b>
300	8612.130
400	8612.140
500	8612.150
600	8612.160
<b>3 Punched section with mounting flange 17 x 73 mm for the inner mounting level for installation in the depth</b>	
For enclosure width/depth mm	<b>Model No.</b>
300	8612.030
400	8612.040
500	8612.050
600	8612.060
<b>4 Punched section with mounting flange 23 x 73 mm for installation in the depth</b>	
For enclosure width/height/depth mm	<b>Model No.</b>
500	8612.550
600	8612.560
800	8612.580
1000	8612.500
1200	8612.520
<b>5 Punched section without mounting flange 23 x 73 mm<sup>1)</sup></b>	
For enclosure width/height/depth mm	<b>Model No.</b>
400	4374.000
500	4375.000
600	4376.000
800	4344.000
1000	4382.000
1200	4378.000
1800	4379.000
2000	4380.000
<b>6 Punched rail 23 x 23 mm<sup>2)</sup></b>	
For enclosure width/height/depth mm	<b>Model No.</b>
400	4169.000
500	4170.000
600	4171.000
800	4172.000
1000	4173.000
1200	4174.000
1400	4393.000
1600	4175.000
1800	4176.000
2000	4177.000

<sup>1)</sup> Also required:  
 – Support bracket 8800.330 for mounting on the vertical section or  
 – Support bracket 4183.000 for mounting on punched sections without mounting flanges or on punched rails

<sup>2)</sup> Also required:  
 – Mounting bracket 8800.370 for mounting on the vertical section or  
 – Mounting bracket 4182.000 for mounting on the bottom of the enclosure section and at the top in the depth or on punched sections  
 – U nut M4/M5/M6/M8



# Accessories



## Interior installation

### 7 Support strip

For enclosure width/depth mm	Model No.
Inner level	
400	4309.000
500	4596.000
600	8800.130
800	4579.000
Outer level	
400	4694.000
500	4695.000
600	4696.600
800	4697.000

### 8 Support rail 75 x 20 mm

For enclosure width/depth mm	Model No.
slotted	
400	4394.000
500	4395.000
600	4396.000
800	4398.000
unslotted	
600	4396.500

### 9 Partial mounting plate

For installation in										Door width mm	Dimensions mm	Model No.
Enclosure width mm					Enclosure depth (side) mm							
400	600	800	1000	1200	400	500	600	800				
■	■	-	-	-	■	-	■	-	600	500 x 300	8614.640	
-	■	-	-	-	-	■	■	-	600	500 x 400	8614.650	
-	■	-	-	-	-	-	■	-	600	500 x 500	8614.660	
-	■	■	-	-	-	-	■	■	600	500 x 700	8614.680	
-	■	-	-	-	-	-	■	-	600	500 x 775	8614.675 <sup>1)</sup>	
■	-	■	-	-	■	-	-	■	800	700 x 300	8614.840	
-	-	■	-	-	-	■	-	■	800	700 x 400	8614.850	
-	-	■	-	-	-	-	-	■	800	700 x 700	8614.880	
■	-	-	■	-	■	-	-	-	1000	900 x 300	8614.040	
-	-	-	■	-	-	■	-	-	1000	900 x 400	8614.050	
-	■	-	■	-	-	-	■	-	1000	900 x 500	8614.060	
■	-	-	-	■	■	-	-	-	-	1100 x 300	8614.240	
-	-	-	-	■	-	■	-	-	-	1100 x 400	8614.250	

### 10 Threaded block

Thread	Model No.
M6	4162.000
M8	4136.000



# Accessories

## LED system light

### 1 LED system light<sup>1)</sup>

Lumen lm	Version	Model No.
900	without socket	2500.200
900	without socket, 24 V (DC)	2500.220
1200	with motion detector	2500.300
1200	with motion detector, 24 V (DC)	2500.320

<sup>1)</sup> Also required:  
– Connection accessories



## Socket box

### 1 Socket box for LED system light<sup>1)</sup>

	Socket	UL	Model No.
	D, earthing-pin	–	2500.710
	GB	–	2500.711
	F/B	–	2500.712
	CH	–	2500.713
	US	■	2500.714
	CN	–	2500.715

<sup>1)</sup> Also required:  
– Connection accessories



Spacers



Swing frame, small



Levelling feet



Climate control



RiLine  
Busbar systems

# Flexible manufacturing

---

VX SE free-standing enclosures can be machined directly at the Rittal factory.

Use your own engineering data and order the enclosures with cut-outs e.g. for cooling units, fan-and-filter units or gland plates. In this way, you can boost the efficiency of your own manufacturing process.

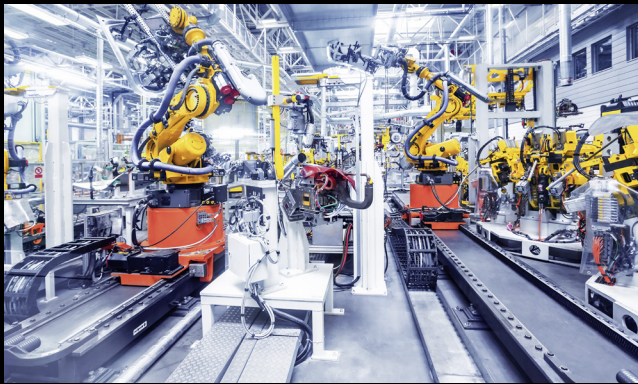




# Versatile solutions

---

The VX SE free-standing enclosure system is versatile, just like our clients. For your projects in different sectors, take advantage of all the benefits of the VX SE such as high protection categories, a wide range of sizes from 300 mm depth to 1800 mm width, different material options, simple and complete engineering and a comprehensive range of accessories.



## Machine and plant engineering

With its high level of torsional rigidity, the VX SE is particularly well-suited to cope with dynamic loads and stresses when used with mobile lifting and operating equipment in a production plant or warehouse.



## Pharmaceuticals

VX SE, stainless steel – Ideal for use in the pharmaceutical industry, because there are no gaps between the sides, roof and frame, the build-up of dirt deposits is prevented. Smooth surfaces allow easy cleaning.



## Food and beverage industry

To meet the exacting standards of the hygiene sector. Smooth stainless steel material (brushed, grain size 400) prevents viruses and bacteria from accumulating in surface recesses. The high protection category of up to IP 66/NEMA 4X allows cleaning with high pressure water jets.



## Building services (heating, climate control, ventilation)

With depths of 300 mm, the VX SE is the tailor-made solution where space is limited. Accessories such as the 180° hinge and the door stay make it easy to keep escape routes clear.

# Rittal – The System.

**Faster – better – everywhere.**

- Enclosures
- Power Distribution
- Climate Control
- IT Infrastructure
- Software & Services

## **Rittal North America LLC**

Woodfield Corporate Center

425 North Martingale Road, Suite 400 • Schaumburg, Illinois 60173 • USA

Phone: 937-399-0500 • Toll-free: 800-477-4000

E-mail: [rittal@rittal.us](mailto:rittal@rittal.us) • Website: [www.rittal.us](http://www.rittal.us)

## **Rittal Systems Ltd.**

6485 Ordan Drive • Mississauga, Ontario L5T 1X2 • Canada

Toll-free: 800-399-0748 • Phone: 905-795-0777

E-Mail: [marketing@rittal.ca](mailto:marketing@rittal.ca) • Website: [www.rittal.ca](http://www.rittal.ca)

## **Rittal Mexico**

Dr. Roberto Gayol 1219-1B • Col. Del Valle Sur, 03100 • Mexico, D.F.

Toll-free: 01 800 8 Rittal (748.825) • Phone: (+52) (55) 5559-5369

E-Mail: [info@rittal.com.mx](mailto:info@rittal.com.mx) • Website: [www.rittal.com.mx](http://www.rittal.com.mx)

US562 ■ 3/21

ENCLOSURES

POWER DISTRIBUTION

CLIMATE CONTROL

IT INFRASTRUCTURE

SOFTWARE & SERVICES

