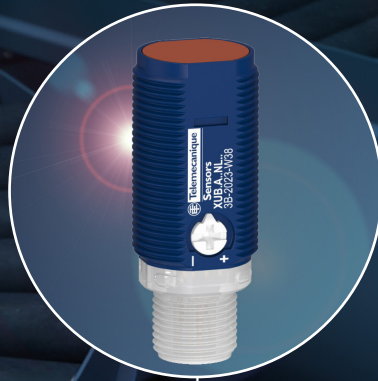


XUN

XUB

XUM

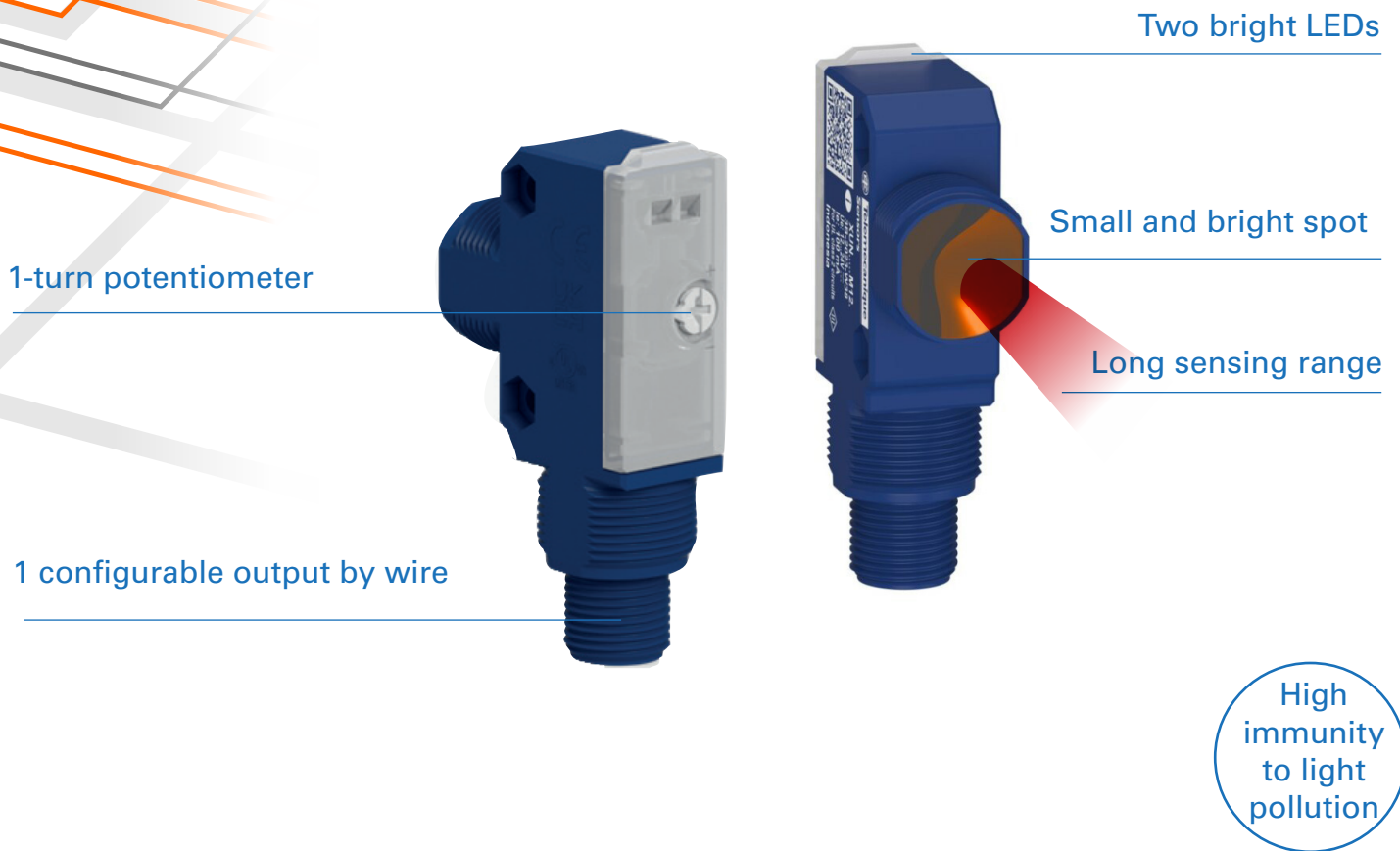
**Simply
Spot On**

PHOTOELECTRIC SENSORS

Taking detection to new heights

Telemecanique's compact XUN, XUB, and XUM photoelectric sensors address virtually any photoelectric sensing application. These compact, easy-to-integrate sensors provide the flexibility to fit into your machine's tight spaces allowing you to maintain your small footprint. Their precise alignment and unmatched performance deliver the edge you need to ensure your customers' production rates remain at peak, keeping them happy and coming back for more.

XUN* -- Flexible mounting in the hybrid format



Unmatched performance in a compact form

- Ensure your customers' production rate remains at peak with speeds up to 1kHz.
- Detect distances up to an industry-leading 30 meters.
- Attain reliable detection, even with side-by-side mounting, with integrated anti-interference.
- Achieve precise and easy alignment with a small, bright visible beam spot.
- Maintain ideal optical performance with exceptional resistance to light pollution.
- Rapidly detect targets every half millisecond.
- Rely on rugged, anti-corrosive housings with IP65 and IP67 ratings, or IP69K for M12 connector versions, to withstand rough environments.
- Leverage constant connectivity to deliver real-time data through IO-Link.
- Reduce thru-beam setup time by 60% with our integrated patented reflector alignment.
- Resist shock and vibrations with robust housing.

*Small reflector placed on thru-beam receiver, enabling the user to align the sensors in less than 4

XUB* -- Cylindrical barrel in axial or angular styles

1 configurable output
by wire

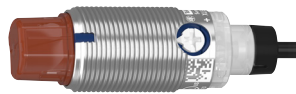
Two bright LEDs

1-turn potentiometer

Small and bright spot

Long sensing range

**Angular version
in metal body**



High
immunity
to light
pollution

Easy integration supporting Industry 4.0

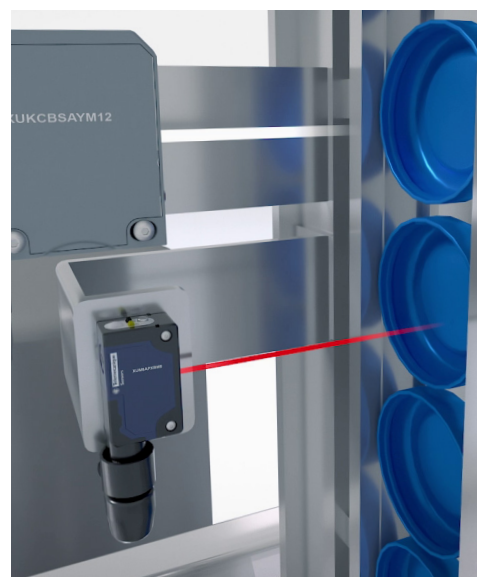
- Easily integrate these compact sensors into your machine's tight spaces.
- Leverage axial and angular styles for design flexibility.
- Choose between connector or cable connection styles.
- Benefit from IO-Link connectivity to deliver real-time data, simplified wiring, enhanced diagnostics, and flexible device integration.
- Mount sensors side-by-side without interference.
- Install vertically or horizontally.
- Easily adjust sensitivity with potentiometer or through IO-Link.

minutes (vs.15 minutes). This reduces installation time by a factor of 3!

XUM -- Miniature rectangular style



High immunity to light pollution



Compact photoelectric sensors

4 detection types

- Thru-beam
- Diffuse
- Reflex
- BGS

3 Body types

- Miniature
- Cylindrical
- Hybrid

212 New configurations



2 beams

- Red
- Infrared (XUM)

IO-Link Protocol



IP65



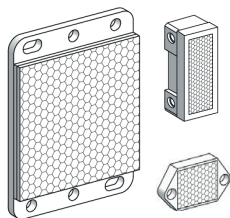
IP67



IP69K



Reflectors



Mounting brackets



M8 and M12 connectors



Telemecanique Sensors a brand with a legacy spanning over 100 years

Telemecanique Sensors has developed solutions that serve the world's fastest-growing industries, including electromechanical switches and industrial sensors. sensors and electromechanical switches.

With more than 100 patents and trademarks, Telemecanique Sensors has solidified its position in the industrial sensor industry through continuous research and development (R&D), technical expertise, and cutting-edge design. Innovation centers across Asia, Europe, and the Americas drive our commitment to materials sensor technology.

Most of our 5 manufacturing facilities located in Asia, Europe and the Americas are certified to the ISO 9001 and ISO 14001 standard, ensuring consistent quality and excellence in our manufacturing processes.

There is always a member of our
team ready to address your needs.
Please don't hesitate to contact us



1,500 employees



100 patents &
trademarks



5 manufacturing
facilities



Shipping
20M/Y
sensors

Discover our complete range of sensors, visit us on www.tesensors.com

TMSS France SAS

au capital de 366 931 214 euros
2 Avenue Gambetta - Tour Egho
92400 Courbevoie
908 125 255 RCS de Nanterre

www.tesensors.com

The information provided in this documentation contains general descriptions and/or technical characteristics of the performance of the products contained herein. As standards, specifications and design change from time to time, please ask for confirmation of the information given in this publication. Neither TMSS France nor any of its subsidiaries or other affiliated companies shall be responsible or liable for misuse of the information contained in this document.

Telemecanique™ Sensors is a trademark of Schneider Electric Industries SAS used under license by TMSS France. Any other brands or trademarks referred to in this document are property of TMSS France or, as the case may be, of its subsidiaries or other affiliated companies. All other brands are trademarks of their respective owners.