

Rittal – The System.

Faster – better – everywhere.

VX ESS – Energy Storage Solution

Strength and Scalability to Empower Your Energy Projects

The VX ESS simplifies the integration, scaling, and long-term management of battery, hydrogen, supercapacitor, and other energy storage media. Building on our proven VX enclosure platform, its versatile, modular design delivers reliable ROI and industry-leading stability across every phase of deployment.



What Can the VX ESS Provide for You?

- **Flexible Compatibility:** Configure module widths in 6.25 mm increments to accommodate a wide range of energy storage types
- **Streamlined Installation & Service:** Position interior components freely for optimized interior organization
- **Safe Operating Temperatures:** Passive airflow through perforated floor and rear panels provide efficient ventilation
- **Robust Load Capacity:** Support up to 1,000 kg / 2,204 lbs total weight—120 kg / 264 lbs per slide-in level or 200 kg / 440 lbs on each heavy-duty shelf
- **Indoor-Outdoor Capability:** Integrate seamlessly with CS Toptec outdoor enclosures for versatile indoor-outdoor deployment

ENCLOSURES

POWER DISTRIBUTION

CLIMATE CONTROL

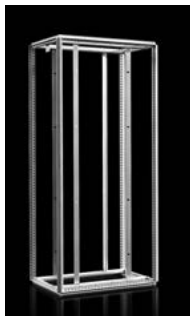
IT INFRASTRUCTURE

SOFTWARE & SERVICES

FRIEDHELM LOH GROUP

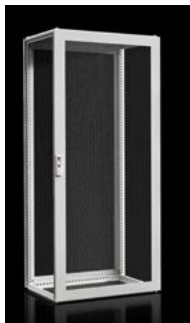


VX ESS – Energy Storage Solution



Energy Storage Frame			
Part Number	Height	Width	Depth
9690030	78.7" (2,000 mm)	23.6" (600 mm)	23.6" (600 mm)
9690031	78.7" (2,000 mm)	23.6" (600 mm)	31.5" (800 mm)
9690033	78.7" (2,000 mm)	31.5" (800 mm)	31.5" (800 mm)

Note: Includes only enclosure frame, roof plate, and interior rack shelf.



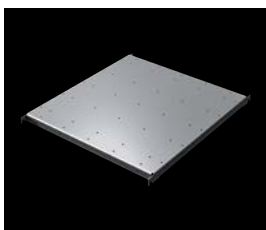
Energy Storage Enclosure without Flexible Interior Fit-Out			
Part Number	Height	Width	Depth
9690020	78.7" (2,000 mm)	23.6" (600 mm)	23.6" (600 mm)
9690021	78.7" (2,000 mm)	23.6" (600 mm)	31.5" (800 mm)
9690023	78.7" (2,000 mm)	31.5" (800 mm)	31.5" (800 mm)

Note: Includes enclosure frame, roof plate, perforated door, and rear panel.



Energy Storage Enclosure with Flexible Interior Fit-Out			
Part Number	Height	Width	Depth
9690040	78.7" (2,000 mm)	23.6" (600 mm)	23.6" (600 mm)
9690041	78.7" (2,000 mm)	23.6" (600 mm)	31.5" (800 mm)
9690043	78.7" (2,000 mm)	31.5" (800 mm)	31.5" (800 mm)

Note: Includes enclosure frame, roof plate, perforated door, rear panel, and shelf.



Scan the QR code to outfit your enclosure with shelf and rail accessories!



You can find the contact details of all Rittal companies throughout the world here.



www.rittal.com/contact

Ready to empower your energy projects?
Contact Rittal today to get started.

US1164-OS-TR ■ 6/25

ENCLOSURES

POWER DISTRIBUTION

CLIMATE CONTROL

IT INFRASTRUCTURE

SOFTWARE & SERVICES

FRIEDHELM LOH GROUP

